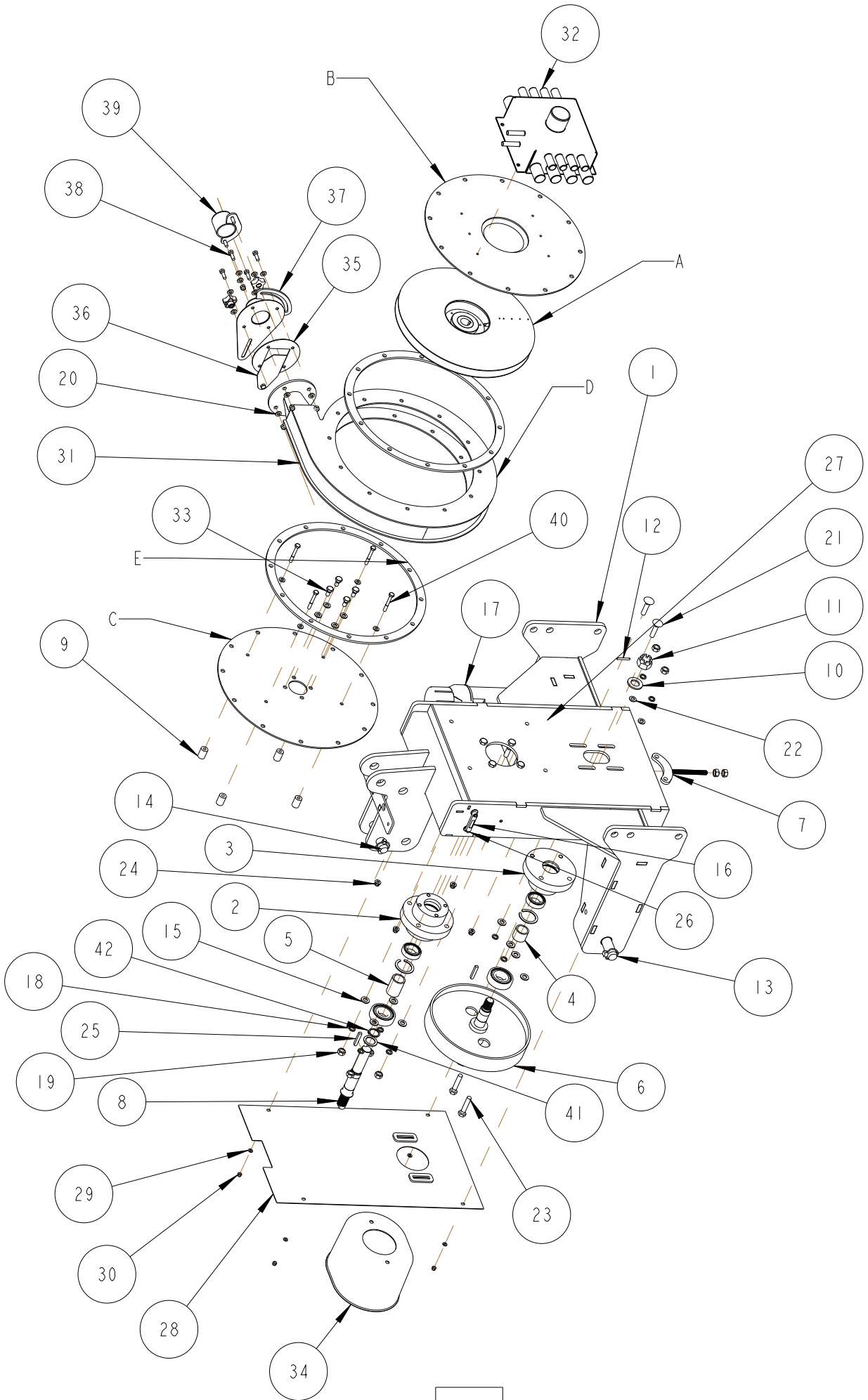


17 RIB WELDED FAN CASE ASSY



S77-00373



NUM	QTY	PART NUMBER	DESCRIPTION
1	1	S74-00023	17 RIB HEADSTOCK 2017 W/A
2	1	SHW7703499	TOP BEARING HOUSING ASSY
3	1	SHW7703500	PTO DRIVE SHAFT MOUNTING
4	1	SHW6903049	PTO SHAFT BEARING SPACER
5	1	SHW6903048	IMPELLER SHAFT BEARING SPACER
6	1	SHW7703545	PTO 17 RIB PULLEY
7	1	SHW7403441	BELT TENSIONER BRACKET
8	1	S69-00537	TAPER LOCK IMPELLER SHAFT 17 RIB
9	4	S69-00538	FAN HEADSTOCK SPACER
10	1	SHW2311094	M24 FORM A
11	1	SHW2303079	CASTLE NUT M24
12	1	SHW2214057	SPLIT PIN
13	2	SHW2314810	DUAL LOWER LINK PIN
14	1	SHW2314813	CAT 2 TOP LINK PIN
15	8	SHW2311091	M12 FORM A
16	1	S64-00006	HSTOCK LEVEL 73mm GPL15
17	1	S64-00005	MANUAL CANISTER MEDIUM
18	8	SHW2311217	Spring Washer M12
19	8	SHW2303009	M12 NUT
20	21	SHW2311089	M8 FORM A
21	2	SHW2306515	COACH M12 X 50
22	6	SHW2311090	M10 FORM A
23	2	SHW2309084	Setscrew M12 x 60
24	9	SHW2303092	M8 NYLOC NUT
25	1	SHW6413057	DRIVE SHAFT KEY
26	2	SHW2309015	SETSCREW M4 x 16
27	2	SHW2309047	Setscrew M8 x 20
28	1	SHW7403944	FAN BACK COVER
29	4	SHW2311088	M6 FORM A
30	4	SHW2303091	M6 NYLOC NUT
31	1	S48-00009	17 RIB WELDED FAN KIT
32	1	SHW7403688	AIR MANIFOLD 8 OUTLET
33	4	SHW2309061	SETSCREW M10 x 20
34	1	SHW6903491	PTO GUARD
35	1	SHW6902526	VACUUM BAFFLE GUIDE
36	1	SHW7403439	VACUUM BAFFLE PLATE W/A
37	1	SHW7403438	PRESSURE OUTLET W/A
38	4	SHW2309048	SETSCREW M8 x 25
39	1	SHW7403440	PRESSURE ADJUSTER WA
40	4	SHW2306042	BOLT M8 x 60
41	1	S69-00722	TAPERLOCK IMPELLER SHAFT WASHER
42	1	SHW2217034	EXT. CIRCLIP 28 X 1.50
NOT SHOWN	1	SHW1323005	17 RIB POLY-V BELT

## S48-00009 PARTS BREAKDOWN

A	1	S48-00010	17 RIB FAN IMPELLER-TAPERLOCK
B	1	S69-00658	17 RIB FAN COVER PLATE-MANIFOLD
C	1	S69-00659	17 RIB FAN COVER PLATE-HEADSTOCK
D	1	S74-00302	17 RIB WELDED FAN CASE
E	2	S69-00671	FAN GASKET

