



SHAYER

POST HOLE

DIGGER


FILL GEARBOX WITH
 SAE 90
 201 & 301 - 1 QT.
 601 - 2 QT.
 901 - 3 QT.

CAUTION
 Does Not Contain Oil
FILL BEFORE OPERATING

OPERATOR'S MANUAL MODEL 201

SAFETY INSTRUCTIONS

Keep all shields and safety decals in place.
 PTO shield **MUST** be installed before operating.
DO NOT wear loose clothing while operating machine.
DO NOT exceed PTO operating speed of 540 RPM.
DO NOT operate implement with PTO angle in excess of 45.
 Shut off tractor engine, set brakes, leaving tractor seat.
 Keep spectators clear of the work area and operation.
 Check drive shaft set screw before use.
DO NOT move tractor while PTO is engaged.
 Use only shear bolts provided for auger pin. If not available use Grade 2 bolts.
 Wear safety goggles while operating.
 Stay completely away from PTO shaft when it is rotating.



DANGER

TO PREVENT SERIOUS INJURY OR DEATH:

- If no entendido inglés, se prefiera que busque a alguien que interprete las instrucciones para usted.
- Read and understand Owner's Manual before operating.
- Operate only from tractor seat.
- Stay away from rotating parts. Keep others away.
- Do not dig around underground utility lines without checking with authorities.

DANGER

TO PREVENT SERIOUS INJURY OR DEATH:

- Contact your dealer to make sure your machine has all permanent guards and shields in place.
- Do not operate without all guards and shields in place.
- Do not operate when auger is higher than 12 inches above ground level. Doing so may cause driveline to bind, resulting in equipment damage or operator injury.
- Stop auger rotation before maneuvering, relocating or transporting.



DANGER

Rotating Parts Hazard
 Keep Away

TO PREVENT SERIOUS INJURY OR DEATH FROM ROTATING PARTS:

If no entendido inglés, se prefiera que busque a alguien que interprete las instrucciones para usted.

- Read and understand Owner's Manual before operating.
- Do not operate without shields and guards in place.
- Do not use body weight to force auger into the ground or to locate auger point when auger is turning.
- Keep away from auger, cutting head, and driveline when auger is running.

DANGER

GUARD MISSING
 When this is visible
DO NOT OPERATE

KEEP CLEAR!
 Keep Others Away!
ENTANGLEMENT HAZARD
 can cause Serious Injury or Death

If no entendido inglés, se prefiera que busque a alguien que interprete las instrucciones para usted.

- Never manually position the auger or manually force the auger into the ground.
- The machine is designed to be operated **ONLY** from the tractor seat.
- Keep everyone clear of all moving parts of the digger while in operation.

DANGER

DO NOT ATTACH THIS IMPLEMENT OR ATTEMPT TO OPERATE UNTIL YOU HAVE READ AND UNDERSTOOD ALL INSTRUCTIONS IN THE OWNER'S MANUAL. IF AN OWNER'S MANUAL IS NOT AVAILABLE CONTACT:

SHAYER MANUFACTURING CO.
 GRAETTINGER, IOWA 51342
 (712) 859-3293



SHAYER MANUFACTURING CO.
 GRAETTINGER, IOWA • (712) 859-3293

IMPORTANT READ ENTIRE PAGE BEFORE CONTINUING

ASSEMBLY INSTRUCTIONS

(Please refer to illustration of Model you have chosen.)

1. Attach Arch to lower hitch points. If tractor has Category II hitch, use Bushings provided on Arch pins.
2. Attach Arch to Boom with Pin and Cotter pins provided.
3. Attach Gearbox to Boom with Pin and Cotter pins provided.
4. Attach PTO Shield to top of Gearbox with bolts provided.
5. Prepare PTO for attachment. Refer to drawing below.
 - a. Remove any foreign material or paint from input shaft on Gearbox.
 - b. Separate PTO Drive Shaft. Use a good grade of gun grease and put a light coating on U-Joint Drive Shaft. Then insert into Drive Tube.
 - c. Attach PTO to Gearbox
 - d. Make sure roll pin (301 & 601) is in groove of input shaft but not tight against bottom of groove so yoke will rotate freely. On 901, make sure the yoke is securely fastened to the splined input shaft.
 - e. Put in Shear Bolt (301 & 601)
 - f. Place Snap Yoke on tractor PTO.
 - g. Raise and lower the Boom through its complete operating arch and check that nothing interferes with the operation. If anything interferes, make the proper three-point adjustment.
6. Attach the Output Shaft Shield to lower gearbox.
7. Attach the Auger to Gearbox using bolts, lockwashers, and hexnuts provided.

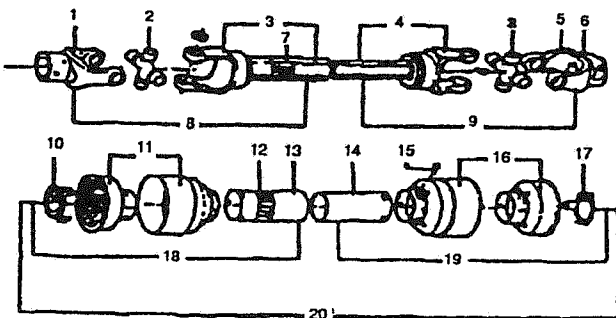
OPERATING INSTRUCTIONS

1. Lower Auger pint slowly to ground. Auger point should be about 4" to the rear of the plumb line of the center of the top of the Auger.
2. Set brake or use PARK position.
3. Engage PTO shaft clutch at half throttle and slowly lower Auger into ground. In some types of soil it may be necessary to hold Auger back from screwing itself into the ground with Hydraulic Control lever.
4. In some types of soil, for best cleaning action, allow Auger to dig a foot or so and raise Auger almost out of the ground then dig deeper. Repeat as necessary.
5. When Auger has reached the desired depth, leave Auger at this depth for a very short period to assist in cleaning out the hole.
6. If Shear Bolt shears, replace with Manufacturer's Shear Bolt or with one of same Specification Number Grade 2.
7. If Auger becomes lodged below ground, DO NOT attempt to lift Auger out of ground by Hydraulic Lift power alone. Reverse the rotation of the Auger by several turns. This can be accomplished by using a bar on the universal joints. After freeing the Auger, slowly lift with Auger slowly rotating.
8. DO NOT transport digger with PTO Shaft engaged. This may result in damage to universal joints.
9. Check digger daily for any loose bolts, damaged bolts, securing pins, etc.

LUBRICATION SCHEDULE

1. After the first fifty (50) hours it is recommended that the gear box be drained, flushed and refilled with SAE 90 EP. Then every 250 hours.
2. Universal joints to be greased after digging 300 holes. Tube and Shaft every other time.

PTO SHAFT PARTS LIST



(SD-067-2) PTO Shaft Parts List

ILLUS. NO.	DESCRIPTION	PART NO.	ILLUS. NO.	DESCRIPTION	PART NO.
1	Special Yoke	SD-067-21	11	Cone for Outer Tube	SD-067-211
2	Cross Journal Set	SD-067-22	12	DANGER Label for Outer Shield	MS-212
3	Outer Tube Yoke for Shaft	SD-067-23	13	Outer Shield	SD-067-212
4	Inner Tube Yoke for Shaft	SD-067-24	14	Inner Shield	SD-067-213
5	Push Pin Yoke	SD-067-25	15	Bolt 3/8" x 2-3/4"	OBTAIN
7	DANGER Label for Outer Tube	MS-211	16	Cone for Inner Tube	SD-067-215
8	Half Female Shaft	SD-067-27	17	Guard Retain Collar for Inner Tube	SD-067-216
9	Half Male Shaft	SD-067-28	18	Half Female Shield	SD-067-217
10	Guard Retaining Ring for Outer Tube	SD-067-29	19	Half Male Shield	SD-067-218
			20	Complete Shield	SD-067-219



SHAYER

Making hard work easy

Shayer Manufacturing Company

P.O. Box 358, Graettinger, IA 51342
 Phone 712-859-3293 • FAX 712-859-3294

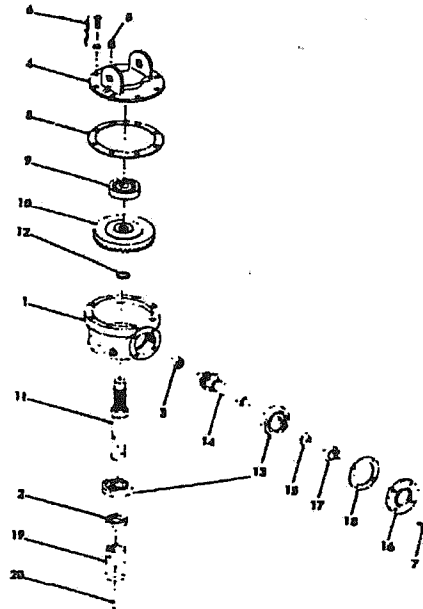
FOR YOUR RECORDS

Date Purchased: _____ Serial # _____

Where Purchased: _____ Invoice # _____

Please Return Card to Assure Warranty

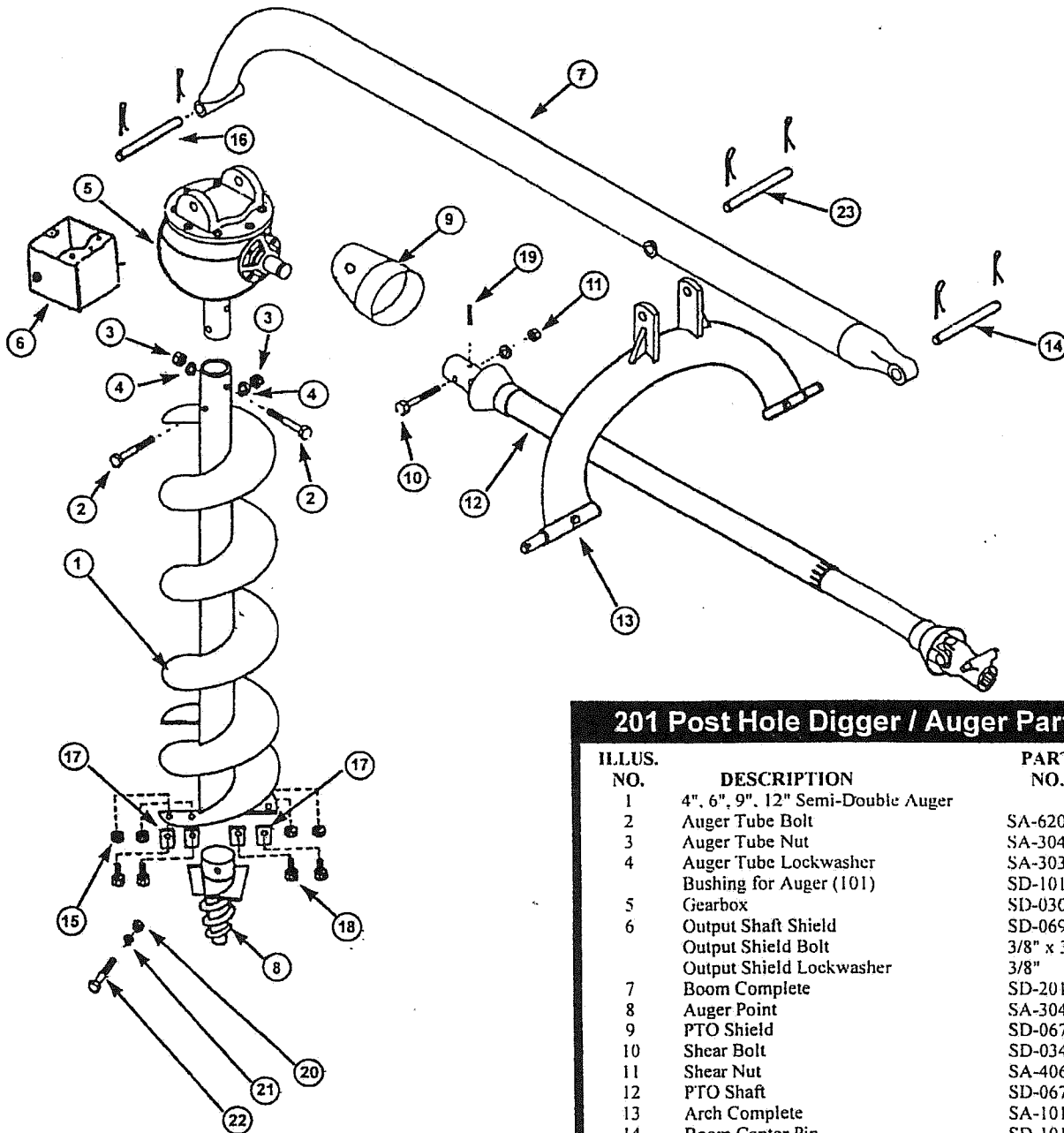
GEARBOX PARTS LIST



SD-0301-GB GEARBOX PARTS LIST

Illus. No.	Description	Part No.
1	Housing	SD-030318
2	Seal	SD-030125
3	Bearing	SD-030103
4	Cap	SD-030104
5	Pipe Plug	SD-030124
6	Cap Screw & Lkwhr (8per)	SD-030128
7	Cap Screw & Lkwhr (4 per)	SD-030107
8	Gasket (0.30)	SD-030108
	Gasket (0.20)	SD-030109
9	Bearings	SD-030110
10	Gear (38 Tooth)	SD-030131
11	Output Shaft	SD-030123
12	Retaining Ring	SD-030113
13	Bearing (2 Req.)	SD-030126
14	Pinion	SD-030115
15	Retaining Ring	SD-030116
16	Cap	SD-030130
17	Seal	SD-030118
18	Gasket (0.30)	SD-030119
19	Roll Pin	SD-030122
20	Bearing Cup	SD-030127
21	Pipe Plug (1/2")	SD-030129
22	Woodruff Key	SD-030132

201 POST HOLE DIGGER



201 Post Hole Digger / Auger Parts List

ILLUS. NO.	DESCRIPTION	PART NO.
1	4", 6", 9", 12" Semi-Double Auger	
2	Auger Tube Bolt	SA-62001
3	Auger Tube Nut	SA-304
4	Auger Tube Lockwasher	SA-303
	Bushing for Auger (101)	SD-1016
5	Gearbox	SD-0301-GB
6	Output Shaft Shield	SD-069
	Output Shield Bolt	3/8" x 3/4" HHCS
	Output Shield Lockwasher	3/8"
7	Boom Complete	SD-201-BC
8	Auger Point	SA-304-P
9	PTO Shield	SD-06700-PTS
10	Shear Bolt	SD-03404
11	Shear Nut	SA-406
12	PTO Shaft	SD-067-2
13	Arch Complete	SA-101-ACR
14	Boom Center Pin	SD-101-CP
15	Auger Teeth Nut	SA-62302
16	Boom End Pin	SD-101-EP
17	Auger Teeth	SA-6230
18	Auger Teeth Bolt	SA-62301
19	Roll Pin	3/16" x 2"
20	Auger Point Nut	SA-308
21	Auger Point Lockwasher	SA-307
22	Auger Point Bolt	SA-305
23	Pin w/ Cotter Keys	SA-1081



Making hard work easy

Shaver Manufacturing Company
Setting the standard in fencing equipment

P.O. Box 358, Graettinger, IA 51342
 Phone 712-859-3293 • FAX 712-859-3294

© July 2006