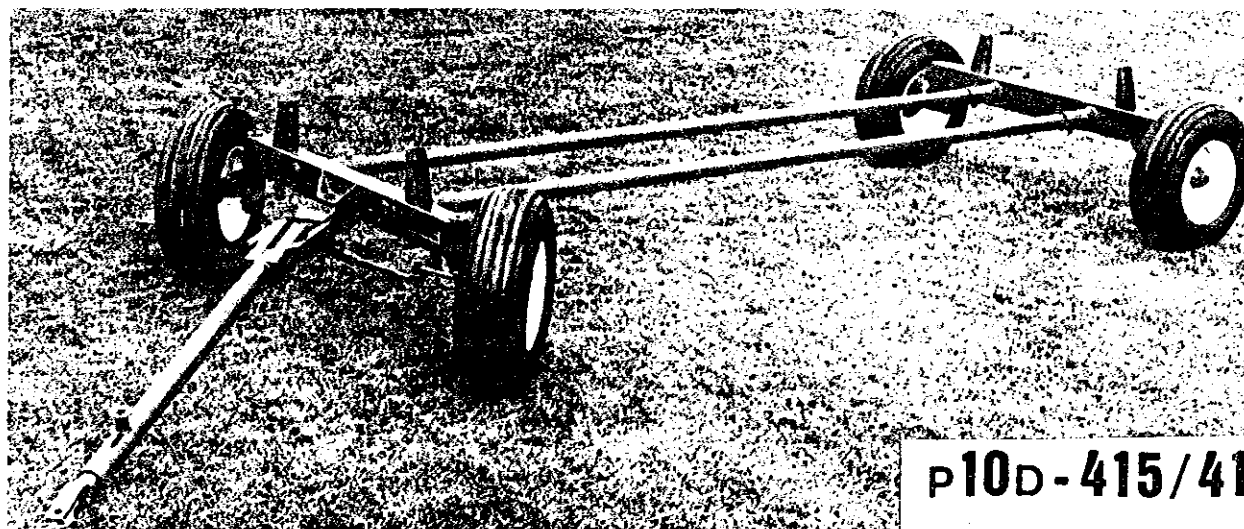


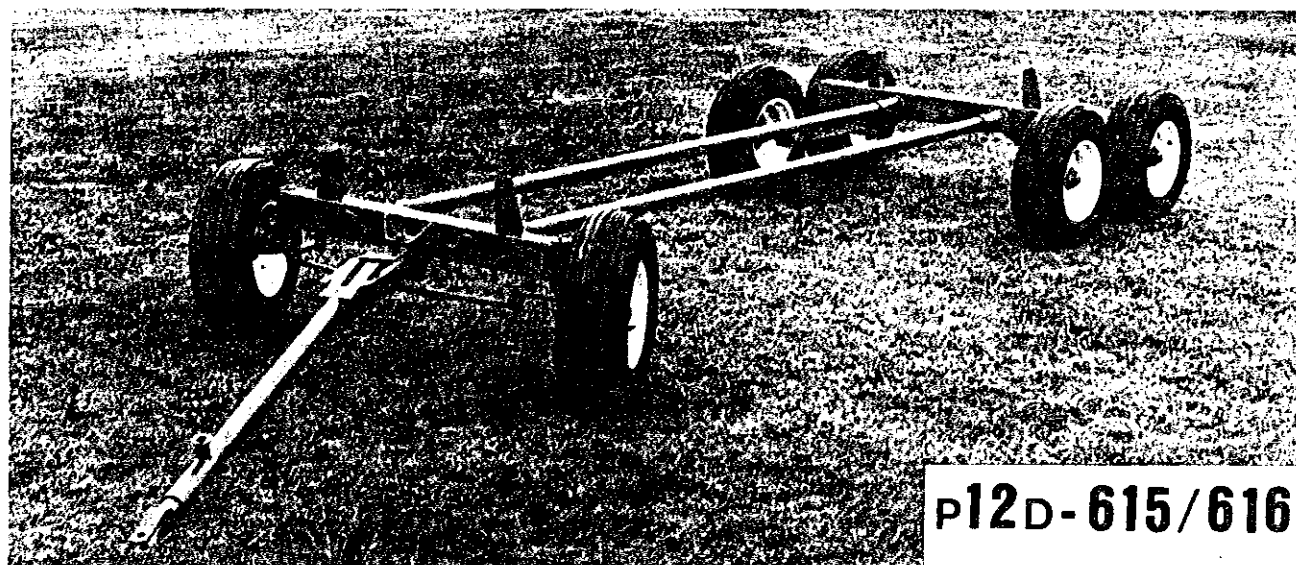
PRONOVOST

WAGONS



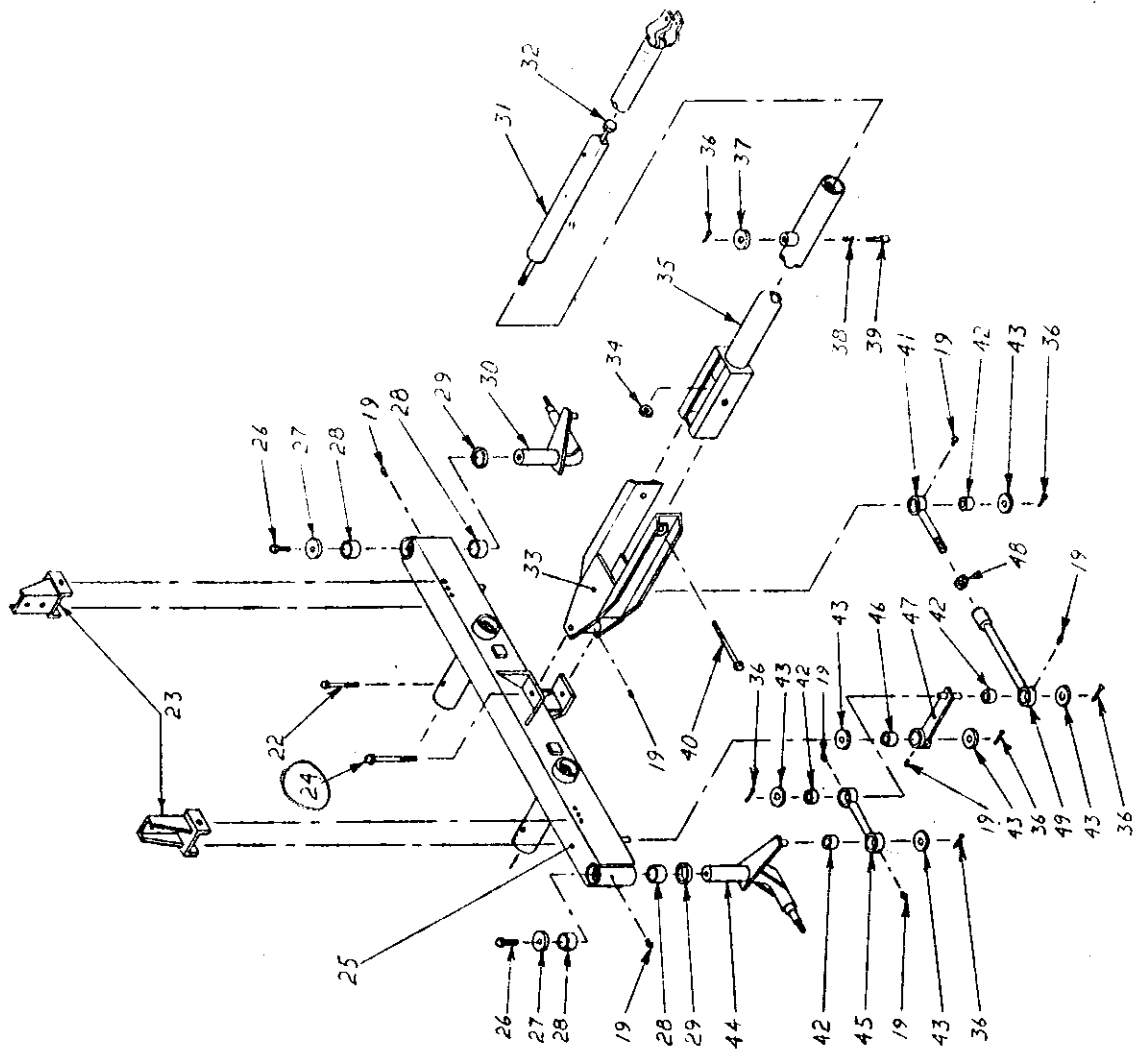
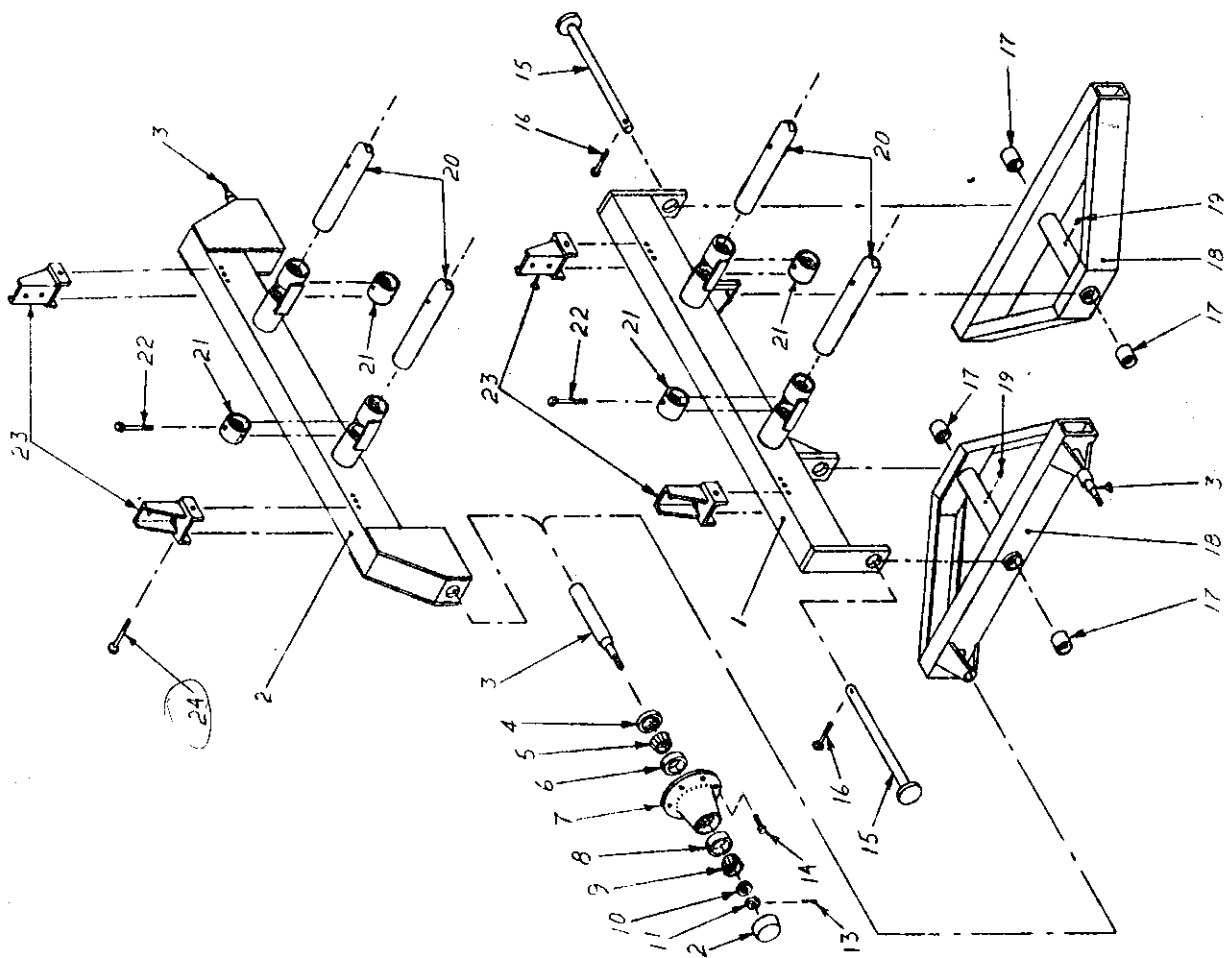
P10D-415/416

10 TONNES — 4 ROUES



P12D-615/616

12 TONNES — 6 ROUES



rendu

détail

| NO. | NO. PIECE PART NO. | DESCRIPTION | QTE. QTY. | |
|-----|-----------------------|---|--------------|------|
| | | | P10D | P12D |
| 1 | 10134 | Train arrière du P12D-615/616, assemblée soudée | -- | 1 |
| 1 | 10134 | Hind carriage of P12D-615/616, welded assembly | -- | 1 |
| 2 | 10135 | Train arrière du P10D-415/416, assemblée soudée | 1 | -- |
| 2 | 10135 | Hind carriage of P10D-415/416, welded assembly | 1 | -- |
| 3 | 10103 | Essieux | 2 | 4 |
| 3 | 10103 | Spindle | 2 | 4 |
| 4 | 10104 | Bague étanche # 20148 | 4 | 6 |
| 4 | 10104 | Oil seal # 20148 | 4 | 6 |
| 5 | 10105 | Cône, coussinet à rouleaux intérieur Timken # 603049 | 4 | 6 |
| 5 | 10105 | Cone, inner roller bearing Timken # 603049 | 4 | 6 |
| 6 | 10106 | Bague, coussinet à rouleaux intérieur Timken # 603011 | 4 | 6 |
| 6 | 10106 | Cup, inner roller bearing Timken # 603011 | 4 | 6 |
| 7 | 10107 | Moyeux 5000 lbs. "Martin" | 4 | 6 |
| 7 | 10107 | Hub 5000 lbs. "Martin" | 4 | 6 |
| 8 | 10108 | Bague, coussinet à rouleaux extérieur Timken # 48548 | 4 | 6 |
| 8 | 10108 | Cup, outer roller bearing Timken # 48548 | 4 | 6 |
| 9 | 10109 | Cône, coussinet à rouleaux extérieur Timken # 48510 | 4 | 6 |
| 9 | 10109 | Cone, outer roller bearing Timken # 48510 | 4 | 6 |
| 10 | Standard | Rondelle plate 7/8" DI. | 4 | 6 |
| 10 | Standard | Flat washer 7/8" ID. | 4 | 6 |
| 11 | Standard | Ecrou crenelé 7/8"-14 NF | 4 | 6 |
| 11 | Standard | Slotted nut 7/8"-14 NF | 4 | 6 |
| 12 | 10110 | Capuchon | 4 | 6 |
| 12 | 10110 | Cap | 4 | 6 |
| 13 | Standard | Goupille sur écrou crenelé 5/32" dia. x 1 1/2" | 4 | 6 |
| 13 | Standard | Cutter pin on slotted nut 5/32" dia. x 1 1/2" | 4 | 6 |
| 14 | 10111 | Vis de jante 9/16"-18 NF | 24 | 36 |
| 14 | 10111 | Rim screw 9/16"-18 NF | 24 | 36 |
| 15 | 10136 | Axe de chape du tandem 1 3/4" dia. | -- | 2 |
| 15 | 10136 | Tandem pin 1 3/4" dia. | -- | 2 |
| 16 | Standard | Boulon 1/2"-13 NC x 3", rondelle d'arrêt, écrou | -- | 2 |
| 16 | Standard | Bolt 1/2"-13 NC x 3", lock washer, nut | -- | 2 |
| 17 | 10137 | Coussinet de brasse 2" DE x 11G mur x 2 1/2" | -- | 4 |
| 17 | 10137 | Brass bushing 2" DE x 11G mur x 2 1/2" | -- | 4 |
| 18 | 10138 | Tandem | -- | 2 |
| 18 | 10138 | Tandem | -- | 2 |
| 19 | Standard | Zerck de graissage, alemite 1/4"-28/NF, droit | 13 | 15 |
| 19 | Standard | Lube fitting, alemite 1/4"-28 NF, straight | 13 | 15 |
| 20 | 10139 | Perche tubulaire 3" DE x 15'-6" | 2 | 2 |
| 20 | 10139 | Tubular reach 3" OD x 15'-6" | 2 | 2 |
| 21 | 10140 | Bague de perche 3 1/2" DE x 2 1/2" | 2 | 2 |
| 21 | 10140 | Tubular ring 3 1/2" OD x 2 1/2" | 2 | 2 |
| 22 | Standard | Boulon 5/8"-10 NC x 4 1/2", rondelle d'arrêt, écrou | 4 | 4 |
| 22 | Standard | Bolt 5/8"-10 NC x 4 1/2", lock washer, nut | 4 | 4 |
| 23 | 10112 | Epée ajustable | 4 | 4 |
| 23 | 10112 | Ajustable stake | 4 | 4 |
| 24 | Standard | Boulon 1/2"-13 NC x 5", rondelle d'arrêt, écrou | 4 | 4 |
| 24 | Standard | Bolt 1/2"-13 NC x 5", lock washer, nut | 4 | 4 |
| 25 | 10141 | Train avant, assemblée soudée | 1 | 1 |
| 25 | 10141 | Fore carriage, welded assembly | 1 | 1 |
| 26 | Standard | Boulon 3/8"-16 NC x 1", rondelle d'arrêt | 2 | 2 |
| 26 | Standard | Bolt 3/8"-16 NC x 1", lock washer | 2 | 2 |
| 27 | 10115 | Rondelle capuchon | 2 | 2 |
| 27 | 10115 | Washer cover | 2 | 2 |

1.34

1.68

| NO. | NO. PIECE PART NO. | DESCRIPTION | QTE. QTY. | |
|-----|-----------------------|--|--------------|------|
| | | | P10D | P12D |
| 28 | 10116 | Coussinet de brasse 2 1/4" DE x 11G x 1 1/2" | 4 | 4 |
| 28 | 10116 | Brass bushing 2 1/4" OD x 11G x 1 1/2" | 4 | 4 |
| 29 | 10117 | Rondelle machinée | 2 | 2 |
| 29 | 10117 | Machinery washer | 2 | 2 |
| 30 | 10118 | Essieux gauche avant | 1 | 1 |
| 30 | 10118 | Front left spindle | 1 | 1 |
| 31 | 10119 | Pôle de traction au tracteur | 1 | 1 |
| 31 | 10119 | Tractor stub pole | 1 | 1 |
| 32 | 10120 | Boulon de sécurité 3/4"-16 NF | 1 | 1 |
| 32 | 10120 | Safety rod 3/4"-16 NF | 1 | 1 |
| 33 | 10121 | Prise pivot de pôle | 1 | 1 |
| 33 | 10121 | Pole hitch | 1 | 1 |
| 34 | Standard | Ecrou à blocage de nylon 3/4"-16 NF | 1 | 1 |
| 34 | Standard | Nylon lock nut 3/4"-16 NF | 1 | 1 |
| 35 | 10122 | Pôle télescopique au wagon | 1 | 1 |
| 35 | 10122 | Wagon telescopic pole | 1 | 1 |
| 36 | Standard | Goupille fendue 1/4" dia. x 1 1/2" | 11 | 11 |
| 36 | Standard | Cutter pin 1/4" dia. x 1 1/2" | 11 | 11 |
| 37 | 10123 | Rondelle pour barrure | 1 | 1 |
| 37 | 10123 | Handle washer | 1 | 1 |
| 38 | 10124 | Ressort | 1 | 1 |
| 38 | 10124 | Spring | 1 | 1 |
| 39 | 10125 | Cheville d'ajustement | 1 | 1 |
| 39 | 10125 | Hitch pin | 1 | 1 |
| 40 | Standard | Boulon 3/4"-16 NF x 8", écrou à blocage de nylon | 1 | 1 |
| 40 | Standard | Bolt 3/4"-16 NF x 8", nylon lock nut | 1 | 1 |
| 41 | 10126 | Barre de conduite filetée | 2 | 2 |
| 41 | 10126 | Threaded tie rod | 2 | 2 |
| 42 | 10127 | Coussinet de brasse 1 1/4" DE x 11G mur x 1" | 8 | 8 |
| 42 | 10127 | Brass bushing 1 1/4" OD x 11G mur x 1" | 8 | 8 |
| 43 | 10128 | Rondelle d'appui | 12 | 12 |
| 43 | 10128 | Flat washer | 12 | 12 |
| 44 | 10131 | Essieux droit avant | 1 | 1 |
| 44 | 10131 | Front right spindle | 1 | 1 |
| 45 | 10132 | Barre de conduite courte | 2 | 2 |
| 45 | 10132 | Short tie rod | 2 | 2 |
| 46 | 10129 | Coussinet de brasse 1 1/4" DE x 11G mur x 1 1/2" | 2 | 2 |
| 46 | 10129 | Brass bushing 1 1/4" OD x 11G mur x 1 1/2" | 2 | 2 |
| 47 | 10130 | Barre de transfert | 2 | 2 |
| 47 | 10130 | Transfer bar | 2 | 2 |
| 48 | Standard | Ecrou 1"-12 NF | 2 | 2 |
| 48 | Standard | Nut 1"-12 NF | 2 | 2 |
| 49 | 10133 | Barre de conduite longue | 2 | 2 |
| 49 | 10133 | Long tie rod | 2 | 2 |