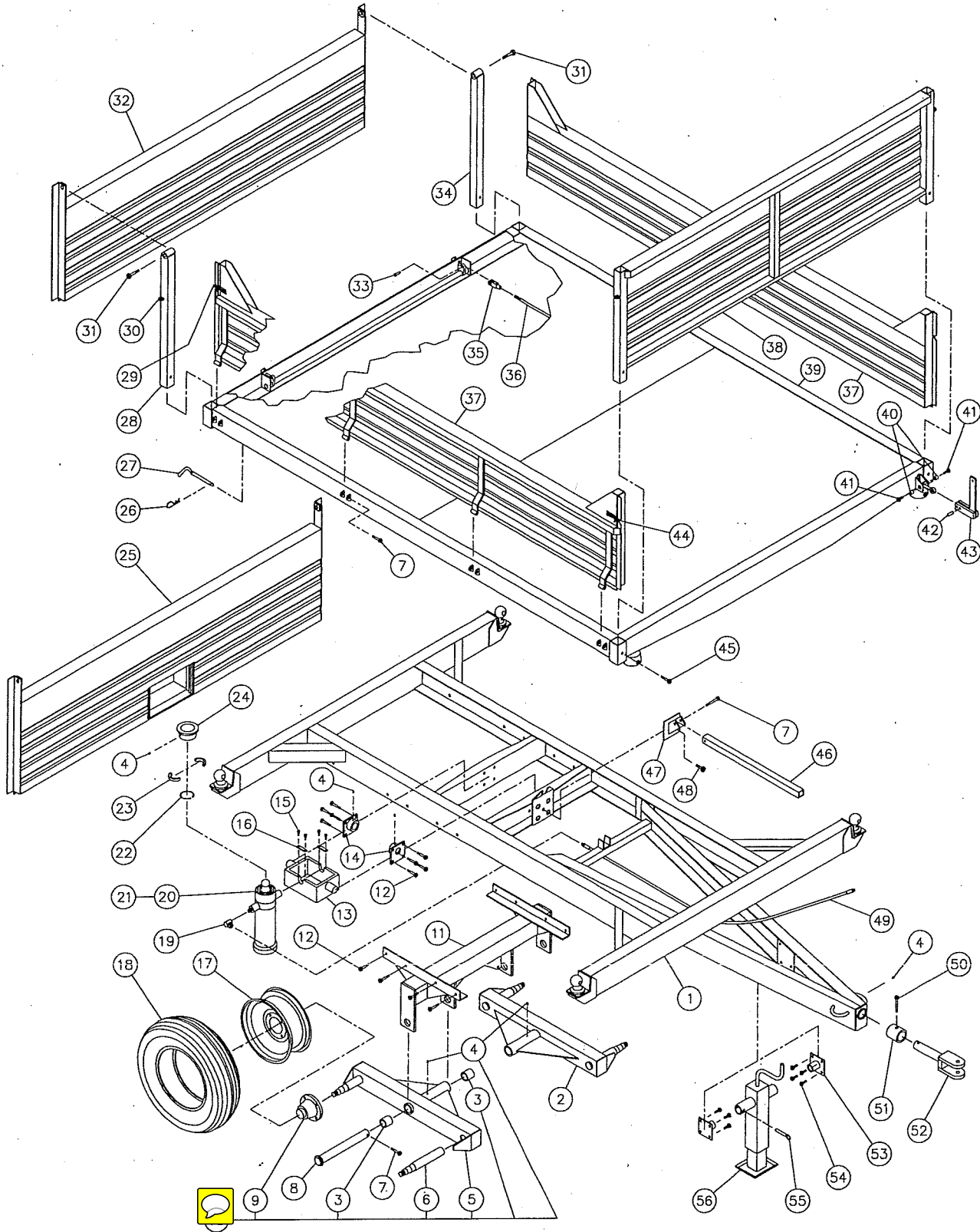


# DUMP TRAILER P-516/3S



8

# DUMP TRAILER P-516/3S (cont'd)

REF.	PART #	DESCRIPTION	QTY
1	---	Frame .....	1
2	51438	Left tandem frame .....	1
NI*	5140	Left tandem assembly .....	1
3	51405	Brass bushing 1 3/4" i.d. x 2" o.d. x 2" lg .....	4
4	Std.	Grease fitting 1/4"-28 straight .....	7
5	51439	Right tandem frame .....	1
6	150-00311	Axle 2" ø (welded) .....	4
7	Std.	Bolt 1/2" NC x 3" lg + nylon locknut .....	11
8	110-00011	Pin for tandem .....	2
9	51441	Hub # H-5000 complete (see details page 20) .....	4
10	5140	Right tandem assembly .....	1
11	110-00221	Cross-beam .....	1
12	Std.	Bolt 1/2" NC x 1 1/2" lg + nylon locknut .....	16
13	51476	Cylinder gimbal .....	1
14	51507	Pivot plate .....	2
15	51573	Metric bolt 8 x 20 x 1.25 mm .....	4
16	51477	Retaining plate for cylinder gimbal .....	2
17	R-1586	Rim 15" x 8" - 6 holes .....	4
18	PN-11L15	Tire 11L15 - 8 ply with tube .....	4
19	51505	Elbow (swivel) 9455-8x8 .....	1
20	51478	Telescopic cylinder 5 sections (see details page 21) .....	1
21	51479	Repair kit for cylinder no. 51478 .....	1
22	51480	Retaining ring .....	1
23	51481	Locking segments for ball-joint <i>no holes pre 2003 - *</i> .....	2
24	51482	Ball joint seat (welded) .....	1
25	120-00681	Rear panel with grain door .....	opt
26	Std.	Hitch pin clip 5/32" .....	2
27	51577	Pin for platform pivot .....	2
28	110-03901	Right rear stake .....	1
29	51584-G	Side panel lock (L.H.) (welded) .....	2
30	51583	Ring for side panel lock (welded) .....	4
31	Std.	Bolt 3/4" NC x 4 1/2" lg + nylon locknut .....	2
32	110-03891	Standard rear panel .....	1
33	51436	Pin 1/2" ø x 1 37/64" lg .....	1
34	110-03902	Left rear stake .....	1
35	51435	Clevis 1/2" - 20 NF + nut .....	1
36	110-07801	Rod 1/2" for rear panel lock .....	1
37	110-07811	Side panel .....	2
38	110-07821	Front panel .....	1
39	---	Platform .....	1
40	51474	Spacer 33/64" d.i. x 27/32" d.e. x 1/2" lg .....	2
41	Std.	Bolt 1/2" NC x 1" lg + flat washer & lock washer .....	2
42	51434	Pin 1/2" x 1 1/4" lg .....	1
43	51521	Lever for rear panel locking mechanism .....	1
44	51584-D	Side panel lock (R.H.) (welded) .....	2
45	Std.	Bolt 7/16" NC x 3 1/2" lg + nylon locknut .....	4
46	160-04011	Safety support .....	1
47	110-07831	Safety support bracket .....	1
48	Std.	Bolt 5/8" NC x 1 1/2" lg + nylon locknut .....	1
49	190-02151	Hose 3/8" x 156" lg .....	1

8

\* For 2004 & later use 51495 (includes bolts) no retaining ring required

---

---

## DUMP TRAILER P-516/3S (cont'd)

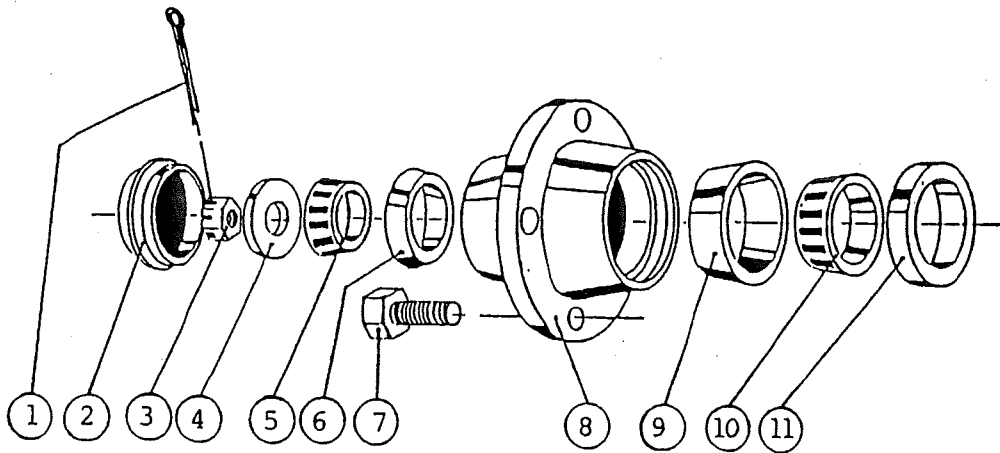
---

REF.	PART #	DESCRIPTION	QTY
50	Std.	Bolt 5/8" NC x 3 1/2" lg + nylon locknut .....	1
51	51410	Ring .....	1
52	51409	Swivel hitch <i>110-06901</i> .....	1
53	51458	Jack mounting plate .....	2
54	Std.	Bolt 7/16" NC x 1 1/4" lg + nylon locknut .....	8
55	51466	Pin for jack .....	1
56	51459	Jack PC-3012 (see detail page 24) .....	1

\*NI = Not illustrated

8

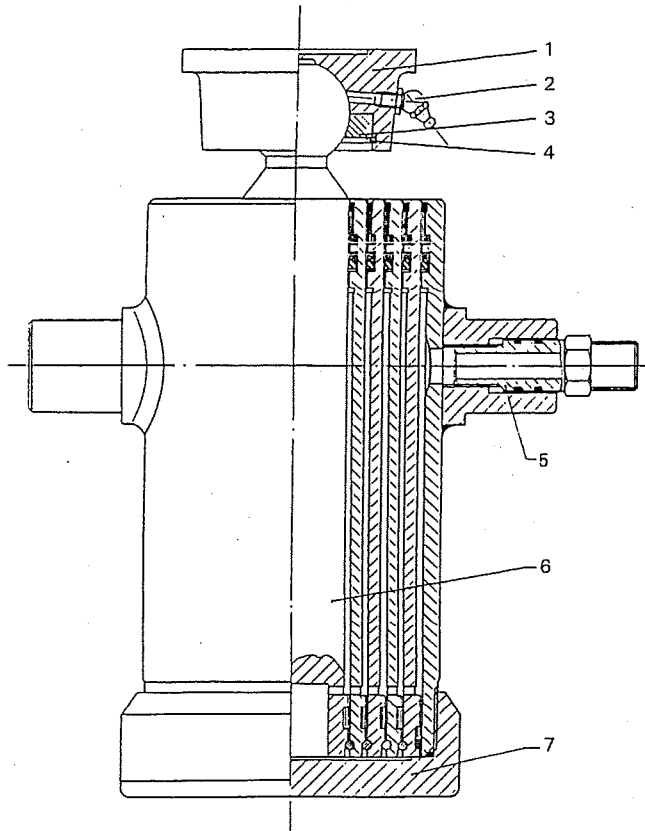
# HUB H5000 51441



REF.	PART #	DESCRIPTION	QTY
1	Std.	Cotter pin 5/32" x 1 1/2" .....	1
2	51417	Dust cap 2.570" ø .....	1
3	51442	Castle nut 7/8" NF .....	1
4	Std.	Flat washer 7/8" .....	1
5	51416	Roller bearing Timken: cone no. 4T-LM48548 .....	1
6	51415	Roller bearing Timken: cup no. 4T-LM48510 .....	1
7	51418	Rim screw 9/16" .....	6
8	51414	Hub only H5000 .....	1
9	51413	Roller bearing Timken: cup no. 4T-LM603011 .....	1
10	51412	Roller bearing Timken: cone no. 4T-LM603049 .....	1
11	51443	Oil seal no. CR20044 .....	1

**8**

# TELESCOPIC CYLINDER # 51478



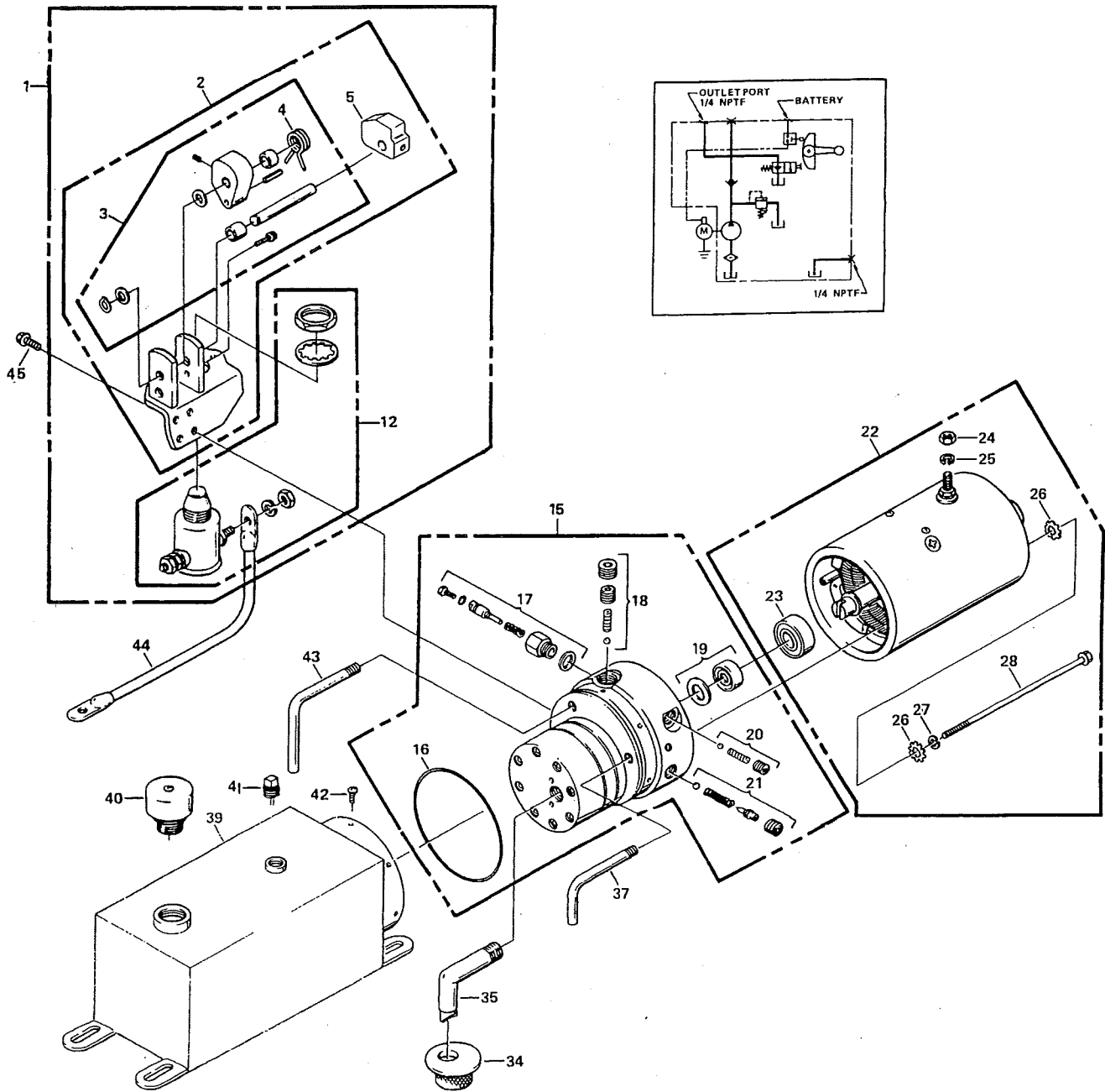
REF.	PART #	DESCRIPTION	QTY
1	51482	Ball joint seat (welded) .....	1
2	Std.	Grease fitting 1/4"-28 straight .....	1
3	51481	Locking segments for ball-joint 2 7/8" .....	1
4	51480	Retaining ring 2 5/8" int. ....	1
5	51586	Connector .....	1
6	51487	Piston with ball .....	1
7	51489	Threaded cylinder base .....	1
NI*	51488	Repair kit for cylinder .....	1
NI*	51589	Seal kit for connector .....	1

**8**

\*NI= Not illustrated

\* Some parts might not be available separately.

# POWER PACK # 613-00000



# POWER PACK # 613-00000 (cont'd)

REF.	PART #	DESCRIPTION	QTY
1	51537	Bracket assembly with mounting plate and start switch .....	1
2	51538	Bracket assembly with mounting plate .....	1
3	51539	Bracket assembly only .....	1
4	51540	Torsion spring .....	1
5	51541	Block .....	1
12	51542	Start switch .....	1
15	51543	Pump assembly (gear code 05) .....	1
16	51544	Industrial o-ring (3 5/8" x 3 7/8" x 1/8") .....	1
17	51545	Plunger .....	1
18	51546	Main check valve .....	1
19	51547	Seal and gasket .....	1
20	51548	Descending check valve .....	1
21	51549	Relief valve .....	1
22	51550	Electric motor 12V DC .....	1
23	51551	Ball bearing .....	1
24	Std.	Nut 5/16"-24 .....	1
25	Std.	Lock washer 5/16" .....	1
26	Std.	Star washer 1/4" .....	4
27	Std.	Lock washer 1/4" .....	2
28	Std.	Bolt 1/4"-20 x 6 1/2" .....	2
34	51552	Filter .....	1
35	51553	Filter (suction tube) 3/8" NPT 90° .....	1
37	51554	Return tube 1/8" .....	1
39	51555	Reservoir 6 1/4" x 7" x 15", 510 in <sup>3</sup> usable .....	1
40	51556	Vent plug .....	1
41	51557	Square head plug .....	1
42	Std.	Screw 10-24 x 3/8" .....	6
43	51558	Return tube (1/8 NPT) .....	1
44	51559	Insulated cable with lugs 9" 6 gauge .....	1
45	Std.	Flange hex. head screw (tap tite) 1/4"-20 x 5/8" .....	4

\* Some parts might not be available separately.