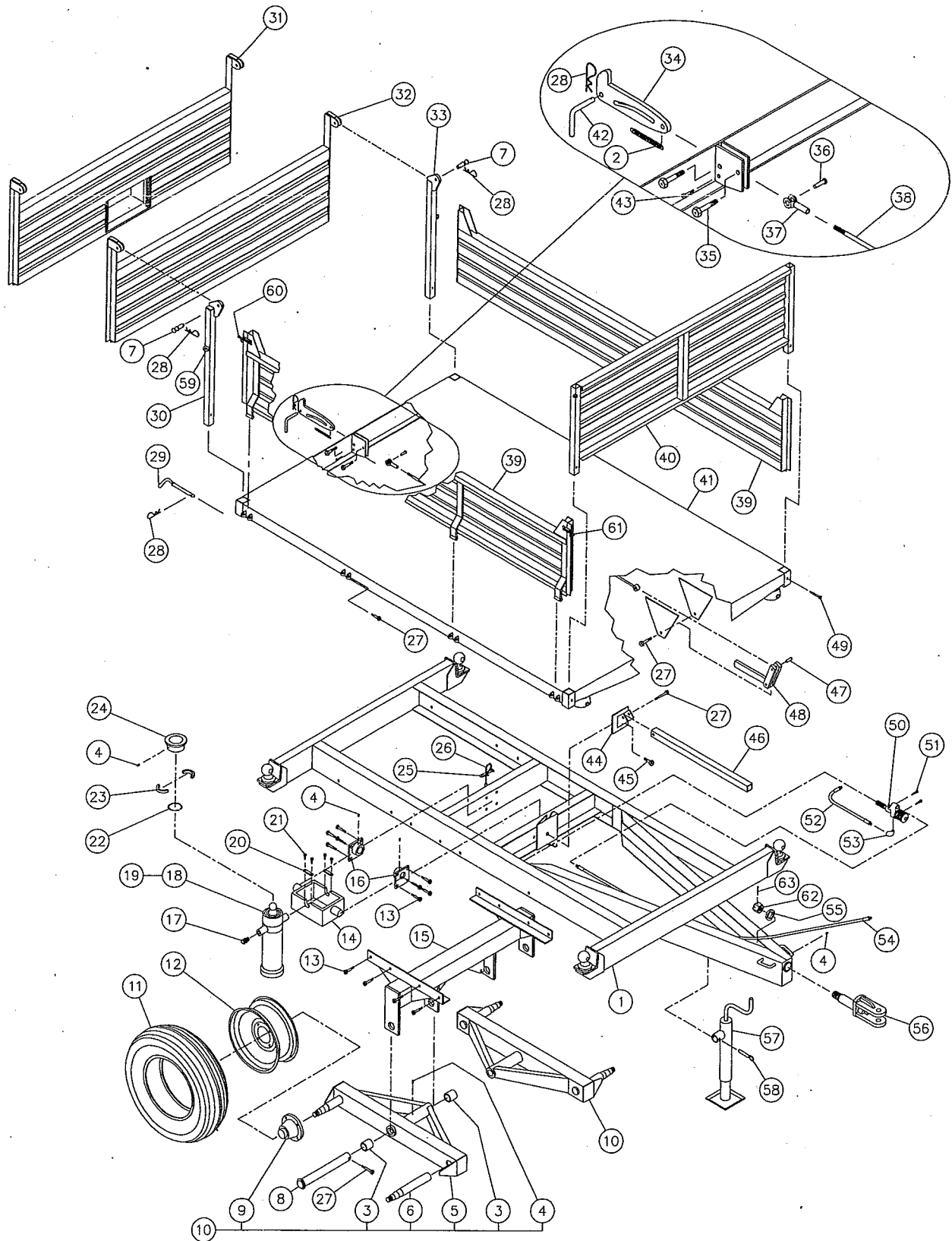


PRONOVOST

DUMP TRAILER P-510/3S

170-02313



8

# DUMP TRAILER P-510/3S (cont'd)

REF.	PART #	DESCRIPTION	QTY
1	120-02231	Frame .....	1
2	190-05351	Spring 3/4" d.e. x 4 1/2" lg .....	1
3	160-01091	Brass bushing 1 3/4" i.d. x 2" o.d. x 2" lg .....	4
4	Std.	Grease fitting 1/4"-28 straight .....	6
5	110-11411	Tandem frame (up to serial # 8225) .....	2
5	110-11412	Tandem frame (from serial # 8226 and up) .....	2
6	150-02281	Axle 1 3/4" ø (welded) (up to serial # 8225) .....	4
6	150-022812	Axle 2" ø (welded) (from serial # 8226 and up) .....	4
7	150-02851	Hinge pin for rear panel .....	2
8	110-00011	Pin for tandem .....	2
9	51503	Hub # H-4000 complete (see details page 23) .....	4
10	110-11413	Tandem assembly (including 3, 4, 5, 6 & 9) (up to serial # 8225) .....	2
10	110-11414	Tandem assembly (including 3, 4, 5, 6 & 9) (from serial # 8226 and up) .....	2
11	PN-11L15	Tire 11L15 - 8 ply .....	4
12	R-1586	Rim 15" x 8" - 6 holes .....	4
13	300-40310	Bolt 1/2" NC x 1 1/2" lg + nylon locknut .....	16
14	51610	Cylinder gimbal .....	1
15	110-11421	Cross-beam .....	1
16	110-09041	Pivot plate .....	2
17	9455-8x8	Elbow (swivel) .....	1
18	51506	Telescopic cylinder 3 sections (see details page 26) .....	1
19	51527	Repair kit for cylinder no. 51506 (see details page 26) .....	1
20	51572	Retaining plate for cylinder gimbal .....	2
21	51573	Metric bolt 8 x 20 x 1.25 mm .....	4
22	51574	Retaining ring .....	1
23	51575	Locking segments for ball-joint .....	2
24	51576	Ball-joint seat (welded) .....	1
25	Std.	Cable clamp 3/16" .....	2
26	190-03031	Cable 3/16" x 72" .....	1
27	300-40400	Bolt 1/2" NC x 3" lg + nylon locknut .....	12
28	Std.	Hitch pin clip 5/32" .....	5
29	150-00721	Pin for platform pivot .....	2
30	110-14391	Right rear stake .....	1
31	120-00522	Rear panel with grain door .....	opt.
32	110-02772	Standard rear panel .....	1
33	110-14461	Left rear stake .....	1
34	130-16211	Rear panel lock .....	1
35	300-40340	Bolt 1/2" NC x 2" lg + nylon locknut .....	2
36	51436	Pin 1/2" ø x 1 3/4" lg .....	1
37	51435	Clevis 1/2" - 20 NF + nut .....	1
38	110-14541	Rod 1/2" for rear panel lock .....	1
39	110-11541	Side panel .....	2
40	110-11532	Front panel .....	1
41	120-01652	Platform .....	1
42	150-02861	Pin for rear locking mechanism .....	1
43	300-34325	Bolt 5/16" NC x 1 3/4" lg + nylon locknut .....	1
44	110-11561	Safety support bracket .....	1
45	300-44310	Bolt 5/8" NC x 1 1/2" lg + nylon locknut .....	1
46	160-05971	Safety support .....	1
47	150-02761	Pin 1/2" x 1 1/2" lg .....	1

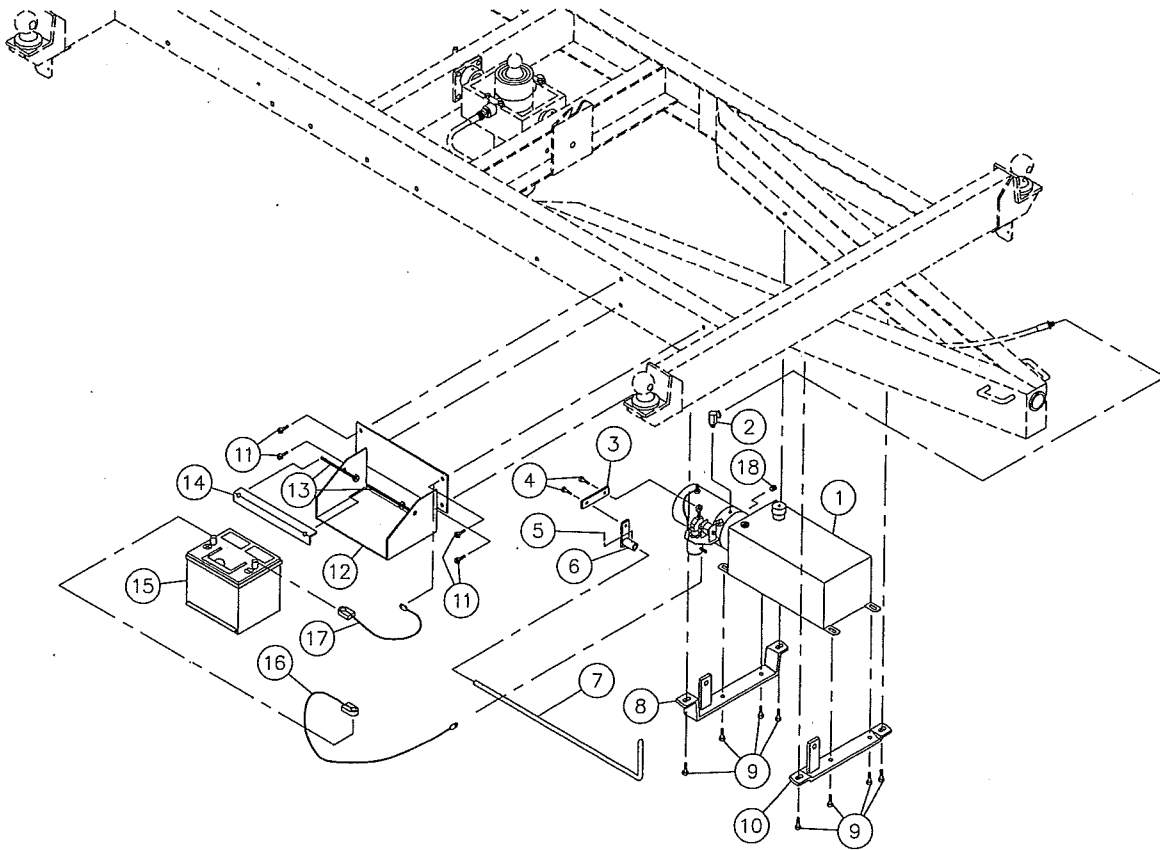
8

## **DUMP TRAILER P-510/3S (cont'd)**

REF.	PART #	DESCRIPTION	QTY
48	110-14271	Lever for automatic locking mechanism .....	1
49	300-36370	Bolt 3/8" NC x 2 1/2" lg + nylon locknut .....	2
50	644-10000	Directional control valve 3/8" NPT (cyl. travel limit) (see details page 25) .....	1
51	300-34280	Bolt 5/16" NC x 1 1/4" lg + nylon locknut .....	2
52	190-03041	Hose R1 3/8" x 21" lg + 1 fitting 6U 106 & 1 fitting 6U 108 .....	1
53	9405-6x6	Street elbow 3/8" .....	1
54	190-03051	Hose R1 3/8" x 114" lg + 1 fitting 6U 106 & 1 fitting 6U 108 .....	1
55	130-20331	Flat washer 1 5/8" i.d. x 2 1/4" o.d. ....	1
56	110-08991	Swivel hitch .....	1
57	51490	Jack 3000 lbs (includes # 58) .....	1
58	51408	Pin for jack .....	1
59	51583	Ring for side panel lock (welded) .....	4
60	51584-G	Side panel lock (L.H.) (welded) .....	2
61	51584-D	Side panel lock (R.H.) (welded) .....	2
62	Std.	Castle nut 1 1/2" NC .....	1
63	Std.	Cotter pin 1/4" x 3" lg .....	1

# ELECTRIC HYDRAULIC PUMP P-510-PHE

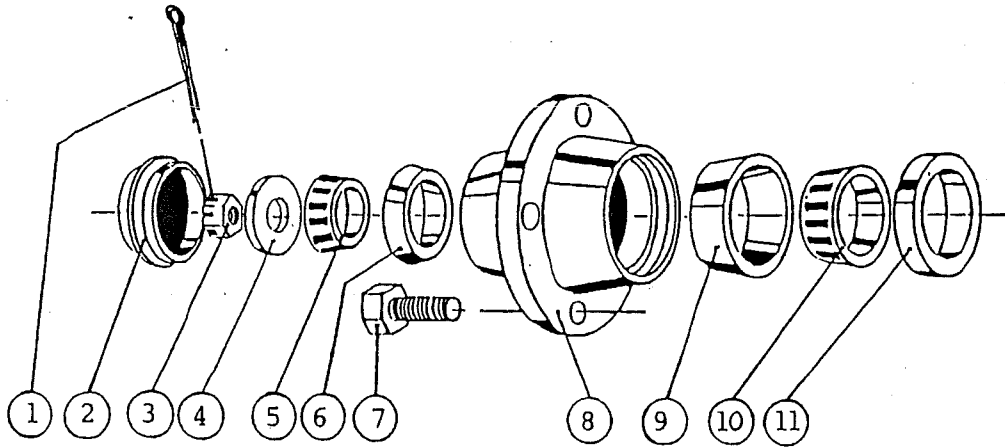
170-00961



REF.	PART #	DESCRIPTION	QTY	
			P-508/3S P-510/3S	P-50710/4E
1	613-00000	Electric hydraulic pump .....	1	1
2	9405x6x6	Fitting 90° .....	1	1
3	140-05011	Connecting rod .....	1	1
4	300-34280	Bolt 5/16" NC x 1 1/4" lg + nylon locknut .....	2	2
5	Std.	Roll pin 1/8" x 1" .....	1	1
6	110-06801	Pivot .....	1	1
7	150-01381	Handle 26" lg .....	1	1
8	110-06781	Rear support (for pump) .....	1	1
9	300-36310	Bolt 3/8" NC x 1 1/2" lg + nylon locknut & flat washer .....	8	8
10	110-06791	Front support (for pump) .....	1	1
11	300-36250	Bolt 3/8" NC x 1" lg + nylon locknut .....	4	-
12	110-06772	Battery holder .....	1	-
13	110-04841	Threaded rod + 1 nylon locknut 3/8" NC + 1 nylon locknut 7/16" NC .....	2	-
14	130-05751	Angle .....	1	-
15	51614	Battery 12 volts 850 Amp. ....	opt.	-
16	51606	Battery cable 4G x 30" lg .....	1	1
17	51607	Battery cable 4G x 16" lg .....	1	-
18	C1359x4	Cap 1/4" NPTM .....	1	1

**8**

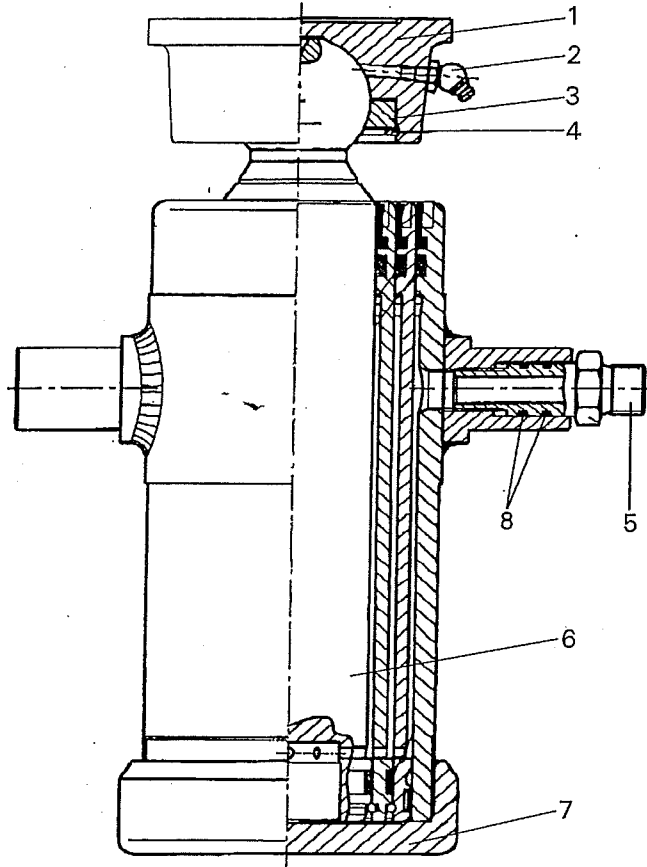
# HUB H4000 51503



REF.	PART #	DESCRIPTION	QTY
1	Std.	Cotter pin 5/32" x 1 3/4" .....	1
2	51528	Dust cap D-4000 2 5/16" ø .....	1
3	51529	Castle nut 1" NF x 9/16" thick .....	1
4	Std.	Flat washer 1" .....	1
5	51530	Roller bearing Timken: cone no. LM67048 .....	1
6	51531	Roller bearing Timken: cup no. LM67010 .....	1
7	51418	Rim screw 9/16" .....	5
8	51532	Hub only H4000 .....	1
9	51533	Roller bearing Timken: cup no. LM29710 .....	1
10	51534	Roller bearing Timken: cone no. LM29749 .....	1
11	51535	Oil seal no. CR17415 .....	1

**8**

# TELESCOPIC CYLINDER # 51506



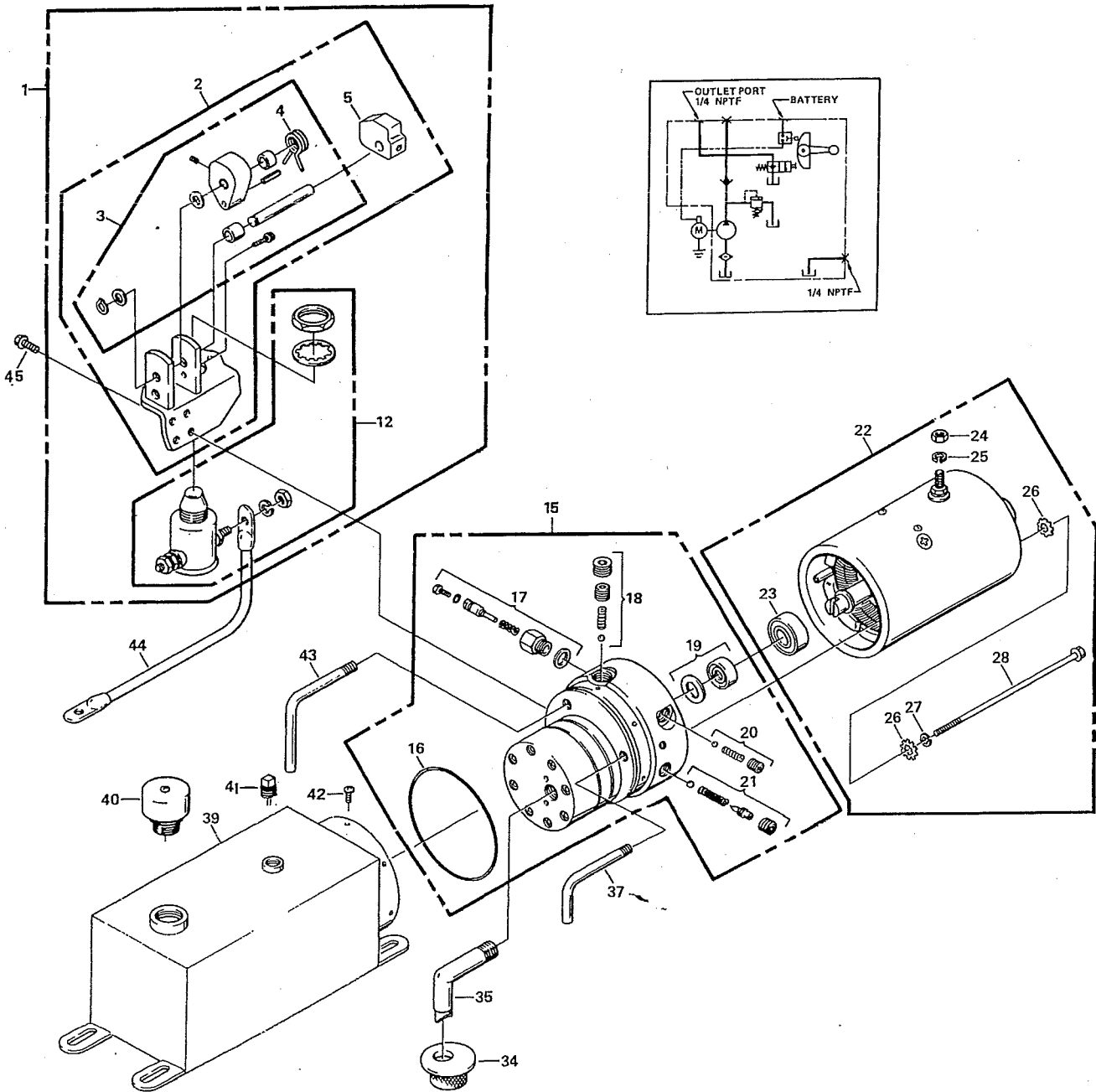
**8**

REF.	PART #	DESCRIPTION	QTY
1	51576	Ball joint seat (welded) .....	1
2	Std.	Grease fitting 1/4"-28 straight .....	1
3	51575	Locking segments for ball-joint 2 7/8" .....	1
4	51574	Retaining ring (interior), 3.175" .....	1
5	51586	Connector .....	1
6	51587	Piston with ball .....	1
7	51588	Threaded cylinder base .....	1
8	51589	Seal kit for connector .....	1
NI*	51527	Repair kit for cylinder .....	1

\*NI = Not illustrated

\* Some parts might not be available apart.

# POWER PACK # 51536



# POWER PACK # 51536 (cont'd)

REF.	PART #	DESCRIPTION	QTY
1	51537	Bracket assembly with mounting plate and start switch .....	1
2	51538	Bracket assembly with mounting plate .....	1
3	51539	Bracket assembly only .....	1
4	51540	Torsion spring .....	1
5	51541	Block .....	1
12	51542	Start switch .....	1
15	51543	Pump assembly (gear code 05) .....	1
16	51544	Industrial o-ring (3 5/8" x 3 7/8" x 1/8") .....	1
17	51545	Plunger .....	1
18	51546	Main check valve .....	1
19	51547	Seal and gasket .....	1
20	51548	Descending check valve .....	1
21	51549	Relief valve .....	1
22	51550	Electric motor 12V DC .....	1
23	51551	Ball bearing .....	1
24	Std.	Nut 5/16"-24 .....	1
25	Std.	Lock washer 5/16" .....	1
26	Std.	Star washer 1/4" .....	4
27	Std.	Lock washer 1/4" .....	2
28	Std.	Bolt 1/4"-20 x 6 1/2" .....	2
34	51552	Filter .....	1
35	51553	Filter (suction tube) 3/8" NPT 90° .....	1
37	51554	Return tube 1/8" .....	1
39	51555	Reservoir 6 1/4" x 7" x 15", 510 in <sup>3</sup> usable .....	1
40	51556	Vent plug .....	1
41	51557	Square head plug .....	1
42	Std.	Screw 10-24 x 3/8" .....	6
43	51558	Return tube (1/8 NPT) .....	1
44	51559	Insulated cable with lugs 9" 6 gauge .....	1
45	Std.	Flange hex. head screw (tap tite) 1/4"-20 x 5/8" .....	4

\* Some parts might not be available apart.

8