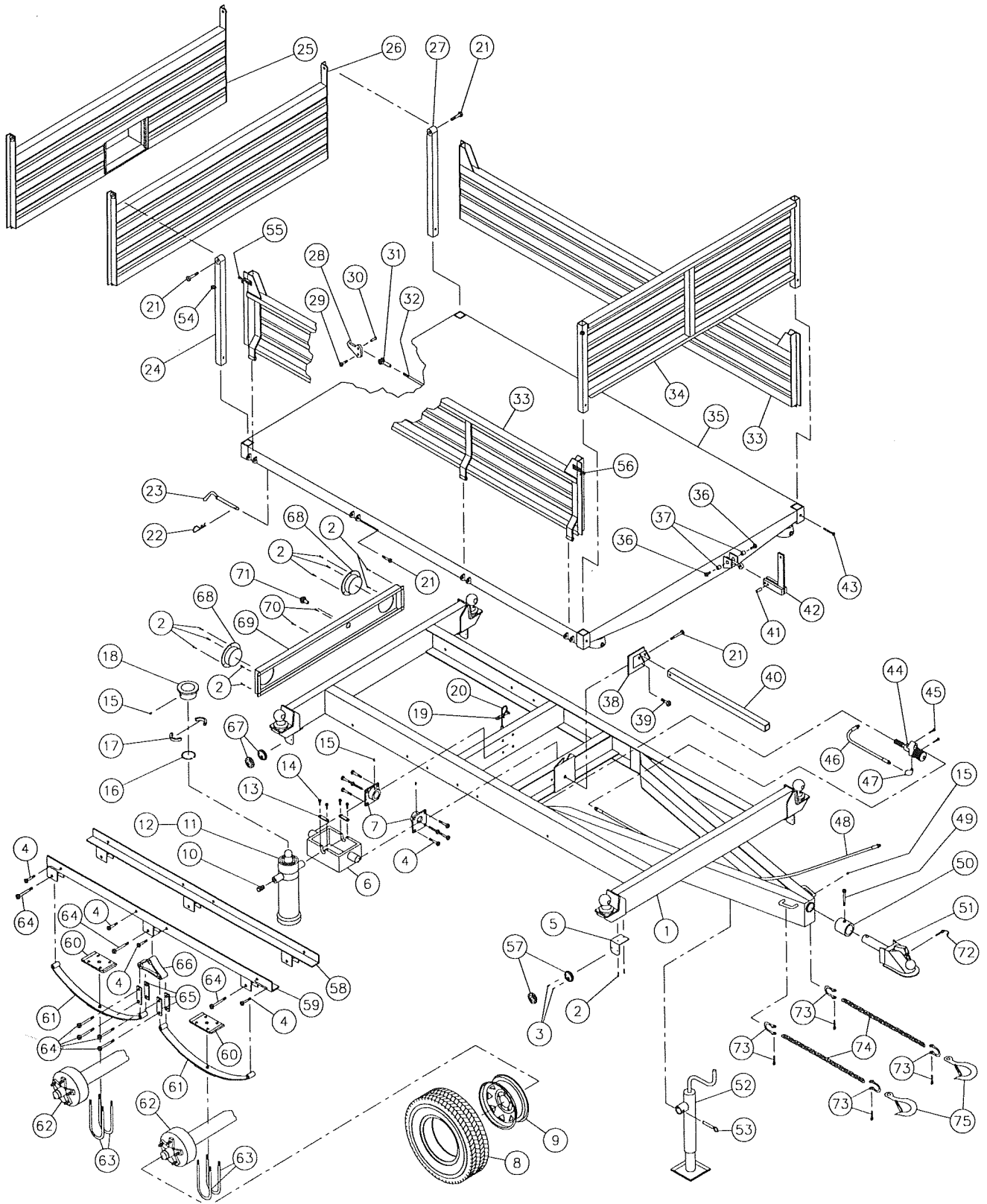


DUMP TRAILER P-50710/4E



8

DUMP TRAILER P-50710/4E (cont'd)

REF.	PART #	DESCRIPTION	QTY
1	51571	Frame	1
2	316-20220	Teck screw 10-16 x 3/4" lg	18
3	300-14190	Bolt 6-32 x 1/2" lg + nylon locknut	8
4	Std.	Bolt 1/2" NC x 1 1/2" lg + nut & lock washer	16
5	130-07471	Support for clearance lamp	4
6	51507	Cylinder gimbal	1
7	51509	Pivot plate	2
8	PN-2057514	Road tire P205/75R14	4
9	R-145.55	Rim 14 x 5.5 - 5 bolts	4
10	51505	Elbow (swivel) 9455-8x8	1
11	51506	Telescopic cylinder 3 sections (see details page 25)	1
12	51527	Repair kit for cylinder no. 51506 (see details page 25)	1
13	51572	Retaining plate for cylindrer gimbal	2
14	51573	Metric bolt 8 x 20 x 1.25 mm	4
15	Std.	Grease fitting 1/4" - 28 straight	4
16	51574	Retaining ring 2 5/8" int.	1
17	51575	Locking segments for ball-joint 2 7/8"	2
18	51576	Ball-joint seat (welded) 4 1/2"	1
19	Std.	Cable clamp 3/16"	2
20	Std.	Cable 3/16" x 69"	1
21	Std.	Bolt 1/2" NC x 3" lg + nylon locknut	11
22	Std.	Hitch pin clip 5/32"	2
23	51577	Pin for platform pivot	2
24	110-02751	Right rear stake	1
25	120-00521	Rear panel with grain door	opt.
26	110-02771	Standard rear panel	1
27	110-02761	Left rear stake	1
28	51513	Rear panel lock	1
29	Std.	Bolt 1/2" NC x 2" lg + nylon locknut	1
30	51436	Pin 1/2" ø x 1 1/4" lg	1
31	51435	Clevis 1/2" - 20 NF + nut	1
32	51514	Rod 1/2" for rear panel lock	1
33	51517	Side panel	2
34	51518	Front panel	1
35	51579	Platform	1
36	Std.	Bolt 1/2" NC x 1" lg + flat washer & lock washer	2
37	51458	Spacer 33/64" d.i. x 27/32" d.e. x 1/2" lg	2
38	51580	Safety support bracket	1
39	Std.	Bolt 5/8" NC x 1 1/2" lg + nylon locknut	1
40	51581	Safety bar	1
41	51434	Pin 1/2" x 1 1/4" lg	1
42	51521	Lever for rear panel locking mechanism	1
43	Std.	Bolt 3/8" NC x 2 1/2" lg + nut & lock washer	4
44	644-10000	Directionnal control valve 3/8" NPT (cyl. travel limit) (see details page 24)	1
45	Std.	Bolt 5/16" NC x 1 1/4"lg + nut & lockwasher	2
46	51582	Hose R1 3/8" x 21" lg + 1 fitting 6U 106 & 1 fitting 6U 108	1
47	Std.	Street elbow 3/8"	1
48	51523	Hose R1 3/8" x 114" lg + 1 fitting 6U 106 & 1 fitting 6U 108	1
49	Std.	Bolt 1/2" NC x 3" lg + nut & rondelle de blocage	1
50	51524	Ring	1
51	110-06651	Ball hitch 2 5/16"	1
51	51525	Swivel hitch	opt.
51	110-07161	Pintle hitch 3" Ø int.	opt.
52	51407	Jack	1
53	51408	Pin for jack	1
54	51583	Ring for side panel lock (welded)	4

8

DUMP TRAILER P-50710/4E (cont'd)

RÉF.	# DE PIÈCE	DESCRIPTION	QTE
55	51584-G	Side panel lock (L.H.) (welded)	2
56	51584-D	Side panel lock (R.H.) (welded)	2
57	51598	Front clearance lamp (orange)	2
58	110-06661	Angle to fasten road axle (L.H.)	1
59	110-06662	Angle to fasten road axle (R.H.)	1
60	51599	Spring fixation plate	4
61	51600	Springs	4
62	110-06671	Road axle with hub and brakes (obtain replace parts locally)	2
63	Std.	U-bolt 1/2" - 20 x 3" x 7" round + 2 nylon locknut	8
64	Std.	Bolt 9/16" - 12 x 3" lg + nylon locknut	14
65	51601	Pivot plate	8
66	51602	Pivot	2
67	51603	Rear clearance lamp (red)	2
68	51604	Rear flasher light	2
69	110-06681	Support for flashers	1
70	316-24221	Metal screw 14 x 3/4" lg	2
71	51605	Light for license plate	1
72	Std.	Lock pin 1/4"	1
73	Std.	Shackle clevis 3/8"	4
74	190-02101	Chain 3/8" x 24" lg class 70	2
75	51608	Crochet (1 ton) with safety lock	2