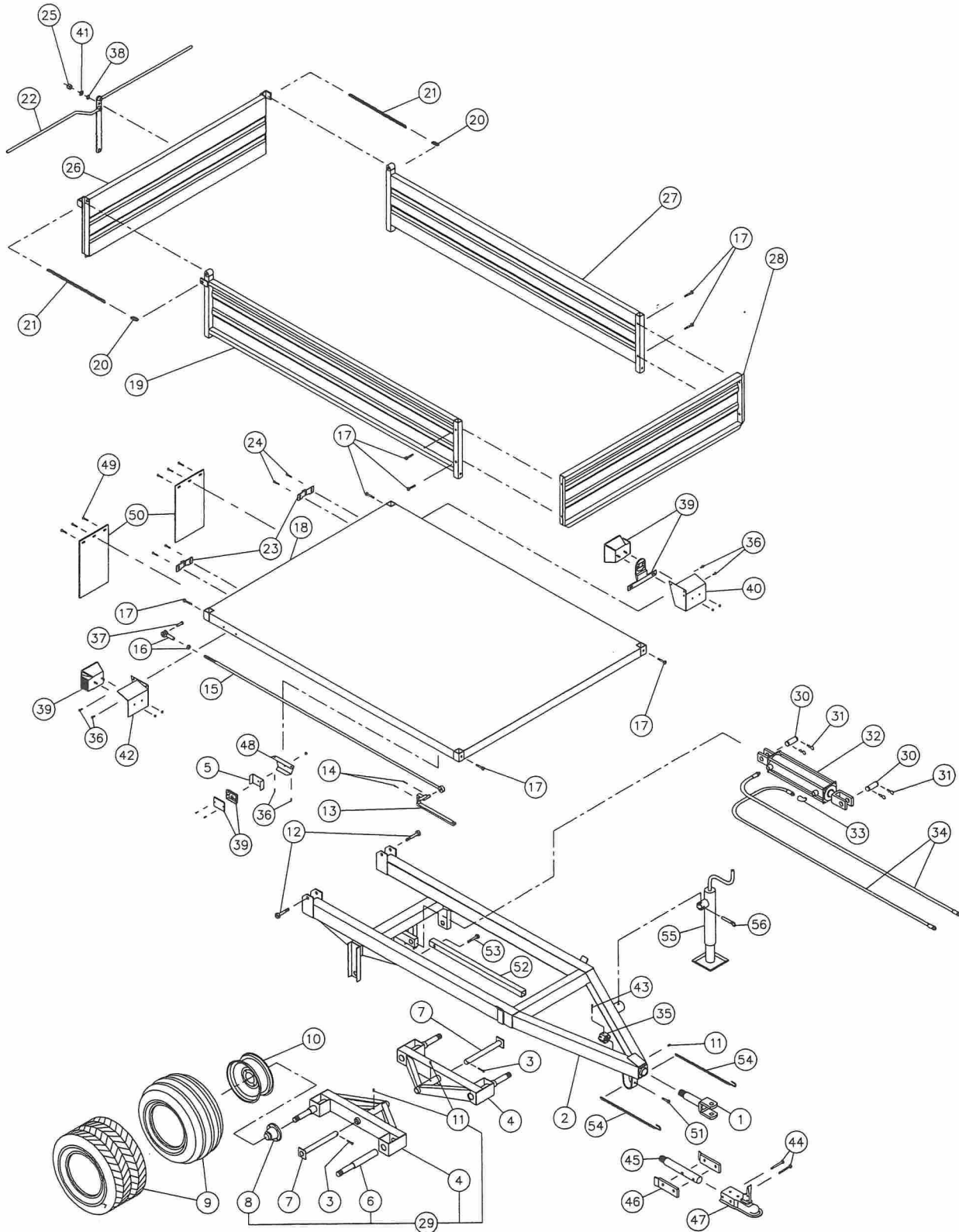


DUMP TRAILER P-503 & P-503H

170-02263



8

DUMP TRAILER P-503 & P-503H (cont'd)

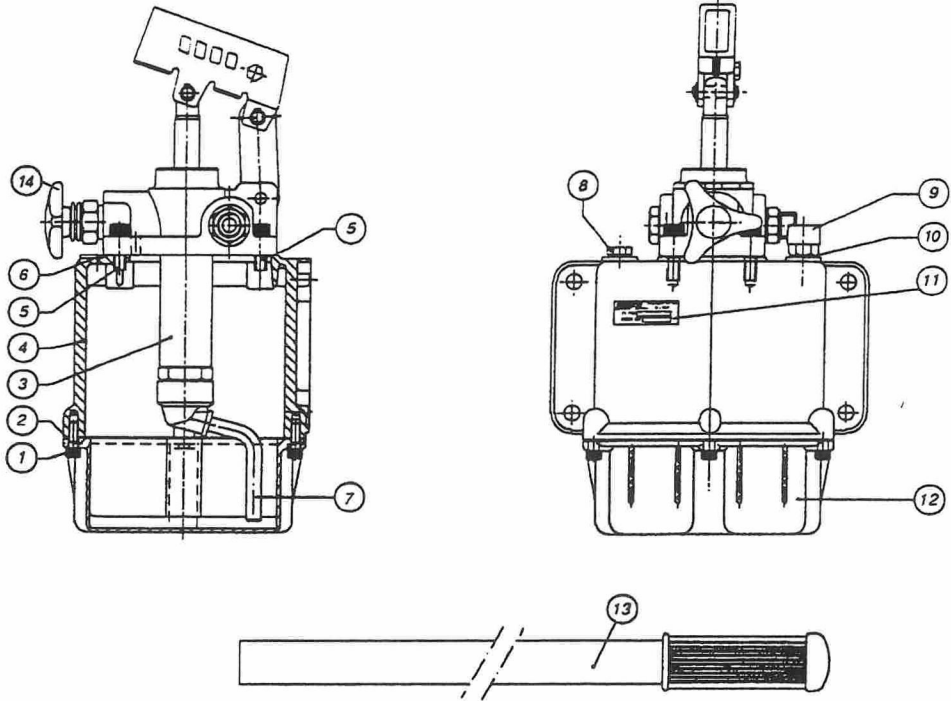
REF.	PART #	DESCRIPTION	QTY	
			P-503	P-503H
1	110-12151	Swivel hitch	1	opt
2	120-02301	Frame	1	1
3	Std.	Cotter pin 3/16" x 2" lg	2	2
4	110-12091	Tandem frame	2	2
5	130-13371	Front light protector	opt.	2
6	150-02361	Spindle 1 1/4"	4	4
7	110-12101	Clevis pin 1" ø	2	2
8	53015	Hub # H-1000 complete (see details page 21)	4	4
9	PN-18858	Tire 18 x 8.5 x 8 4 ply	4	-
9	PN-185858	Road tire 18.5 x 8.5 x 8 4 ply	-	4
10	R874	Rim 8" x 7" - 4 holes	4	4
11	Std.	Grease fitting 1/4"-28 straight	3	3
12	Std.	Bolt 5/8" NC x 3 1/2" lg + nylon locknut	2	2
13	110-12141	Lever for rear panel locking mechanism	1	1
14	Std.	Cotter pin 1/8" x 1" lg	2	2
15	110-12111	Rod 1/2" for lock	1	1
16	51435	Clevis 1/2" NF + nut 1/2" NF	1	1
17	Std.	Bolt 3/8" NC x 2" lg + nut & nylon locknut	8	8
18	120-02311	Platform	1	1
19	110-12121	Right panel	1	1
20	53050	Quick link 1/4" x 1 3/4" lg	2	2
21	190-03301	Chain 7/32" x 18" lg	2	2
22	110-16761	Rear panel lock assembly	1	1
23	110-16731	Lower tailgate hinge (adjustable)	2	2
24	Std.	Bolt 3/8" NC x 1 1/4" lg + flat washer + nylon locknut	4	4
25	Std.	Thin nylon nut 1/2" NC	1	1
26	110-02831	Rear panel	1	1
27	110-12122	Left panel	1	1
28	110-12131	Front panel	1	1
29	110-12092	Tandem assembly	2	2
30	53016	Clevis pin 1" ø	2	2
31	Std.	Hitch pin clip 3/16"	4	4
32	30TR12	Hydraulic cylinder 3" ø x 12" (see details page 22)	1	1
33	Std.	Elbow 1/2" 90° 9405x8x8	1	1
34	190-03291	Hose 3/8" x 7'8" lg + 1 fitting 6U-108 + 1 fitting 6U-106	2	2
35	357-54000	Castle nut 1 1/4" NF	1	1
36	Std.	Teck screw 10-16 x 1/2" lg	opt.	8
37	51436	Clevis pin 1/2" x 1 3/4" lg	1	1
38	Std.	Spring tension washer	1	1
39	53060	Road light kit	opt.	1
40	110-11952	Rear light support (L.H.)	opt.	1
41	Std.	Flat washer 1/2" NC	1	1
42	110-11951	Rear light support (R.H.)	opt.	1
43	Std.	Cotter pin 5/32" x 2" lg	1	1
44	Std.	Bolt 1/2" NC x 3 1/2" lg + nylon locknut	opt.	2
45	150-01421	Ball hitch pin	opt.	1
46	110-06931	Spacer kit	opt.	1
47	53062	Ball hitch 2"	opt.	1

8

DUMP TRAILER P-503 & P-503H (cont'd)

REF.	PART #	DESCRIPTION	QTY	
			P-503	P-503H
48	130-13381	Front light support	opt.	2
49	Std.	Bolt 1/4" NC x 1" lg + nylon locknut + flat washer	opt.	6
50	51612	Mudguard 8" x 14"	opt.	2
51	Std.	Bolt 3/8" NC x 1 1/2" lg + nylon locknut	opt.	1
52	160-06051	Safety support	1	1
53	Std.	Bolt 1/2" NC x 2" lg + nylon locknut	1	1
54	53064	Safety chain with hook	opt.	2
55	51407	Jack 2000 lbs (includes no.56) (from serial # 6704 and up)	1	1
56	51408	Pin for jack (from serial # 6704 and up)	1	1

MANUAL PUMP #53056 (106.3.20)

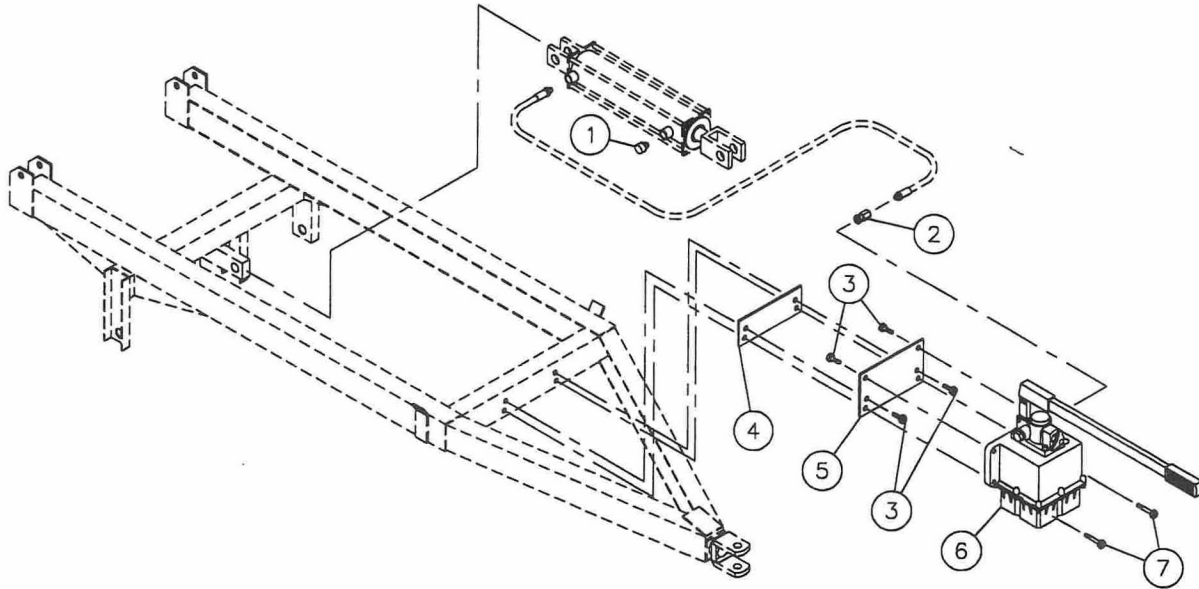


REF.	PART #	CODE #	DESCRIPTION	QTY
1	53032	502.2.441	Screw for reservoir mounting	8
2	53033	507.3.182	Reservoir gasket	1
3	53034	106.4.29	PMSS 45 Hand-Pump only (no body)	1
4	53035	514.3.89	Pump main body	1
5	53036	502.3.566	Screw M8 x 25	4
6	53037	507.3.208	Pump gasket	1
7	53038	541.4.36	Suction pipe for 3 lt. reservoir	1
8	53039	540.2.49	Oil filler plug	1
9	53040	118.10.106	Breather cap	1
10	53041	116.9.158	Aluminum washer	1
11	53042	513.13.963	Name plate	1
12	53043	514.5.78	Reservoir (3 lt.)	1
13	53044	106.0.78	Lever PM 45	1
14	53057	500.1.99	Relief valve knob	1
NI*	53045	106.900.51	Gasket kit	1
NI*	PHM 3003		Pump #53056 with installation hardware	1

*NI = Not illustrated

8

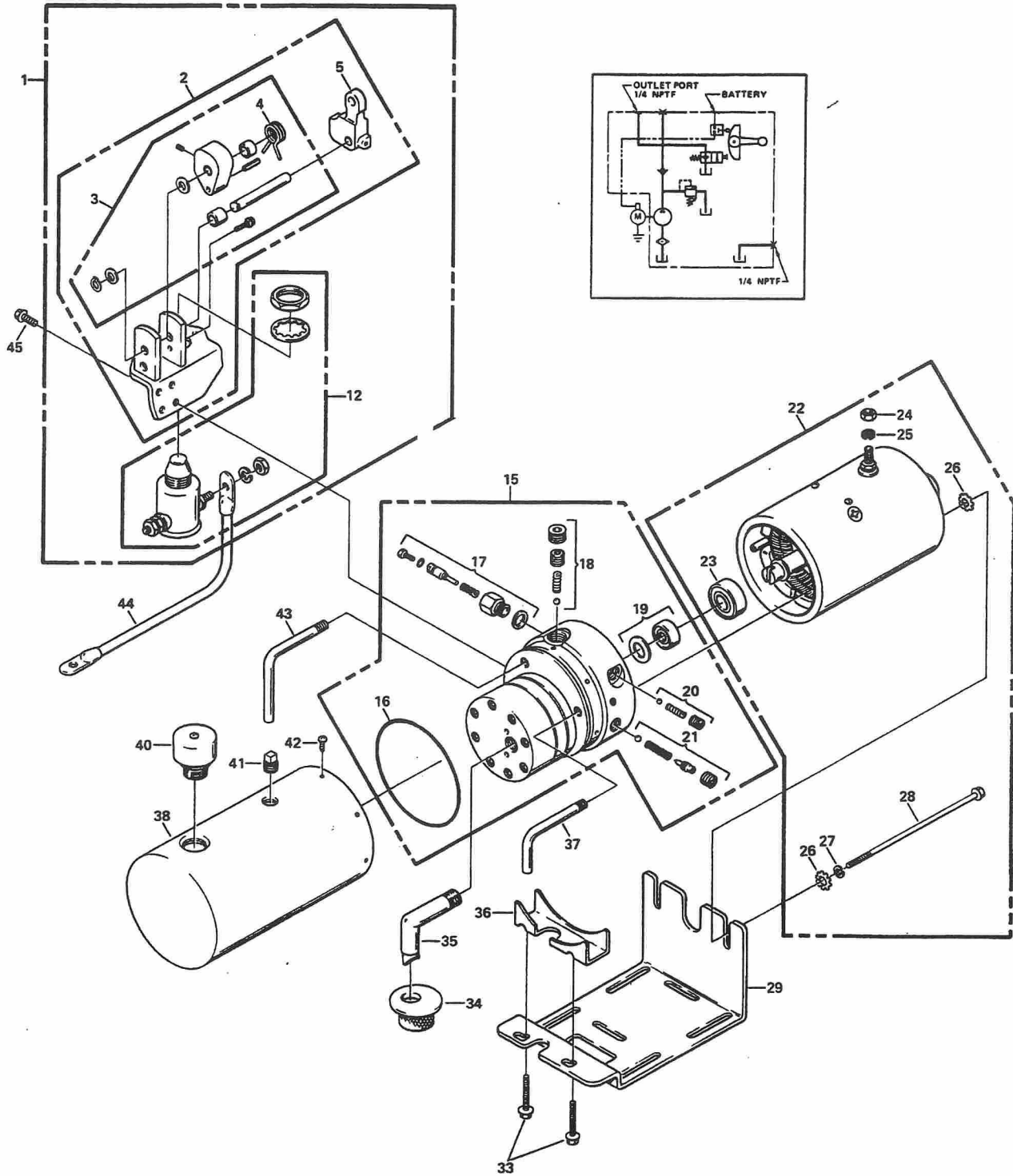
INSTALLATION OF THE MANUAL PUMP #53056 (106.3.20)



REF.	PART #	DESCRIPTION	QTY
1	669-02501	Vent plug 1/2" NPT	1
2	664-21515	Fitting straight 3/8" NPT fem. x 3/8" NPT fem. swivel	1
3	Std.	Bolt 7/16" NC x 1 1/2" lg + nylon locknut	4
4	140-05091	Spacer 1/2" x 3" x 8 1/2"	1
5	130-07851	Mounting plate 3/16" x 5" x 8 1/2"	1
6	53056	Manual hydraulic pump	1
7	Std.	Bolt 7/16" NC x 2 1/2" lg + nylon locknut	2

8

ELECTRIC HYDRAULIC PUMP # 613-00001



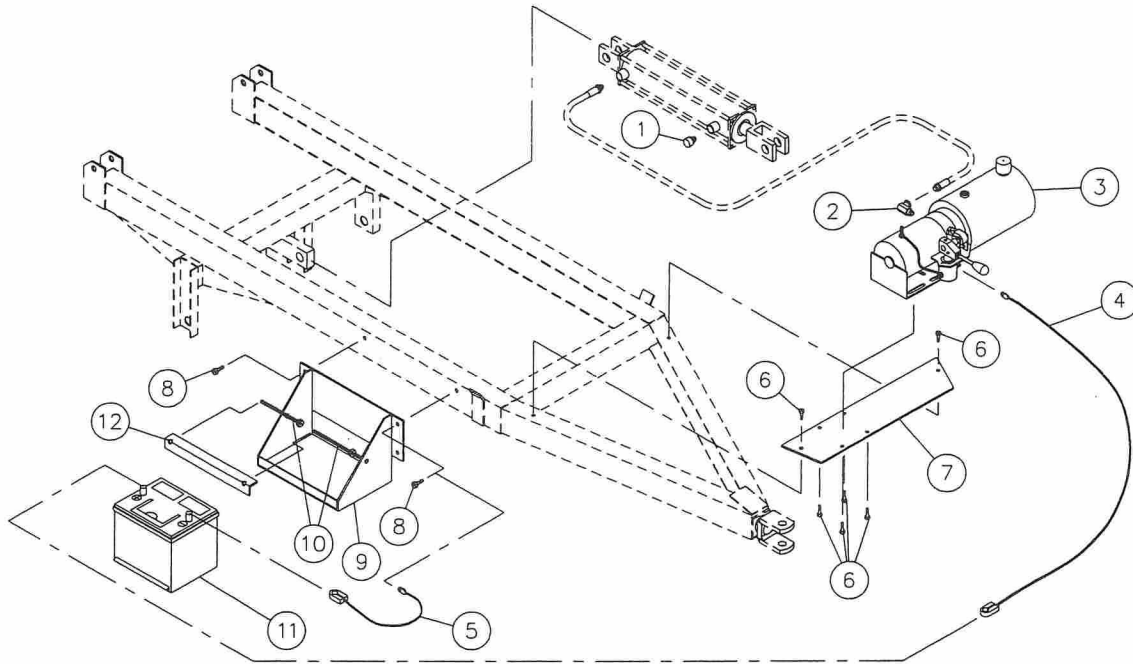
8

ELECTRIC HYDRAULIC PUMP # 613-00001 (cont'd)

REF.	PART #	DESCRIPTION	QTY
1	51537	Bracket assembly with mounting plate and start switch	1
2	51538	Bracket assembly with mounting plate	1
3	51539	Bracket assembly only	1
4	51540	Torsion spring	1
5	51541	Block	1
12	51542	Start switch	1
15	51543	Pump assembly (gear code 05)	1
16	51544	Industrial o-ring (3 5/8" x 3 7/8" x 1/8")	1
17	51545	Plunger	1
18	51546	Main check valve	1
19	51547	Seal and gasket	1
20	51548	Descending check valve	1
21	51549	Relief valve	1
22	51550	Electric motor 12V DC	1
23	51551	Ball bearing	1
24	Std.	Nut 5/16"-24	1
25	Std.	Lock washer 5/16"	1
26	Std.	Star washer 1/4"	4
27	Std.	Lock washer 1/4"	2
28	Std.	Bolt 1/4"-20 x 6 1/2"	2
29	619-00001	Mounting plate	1
33	619-00002	Bolt 1/4"-20 x 1 3/8" lg	2
34	51552	Filter	1
35	51553	Filter (suction tube) 3/8" NPT 90°	1
36	619-00003	Mounting plate adaptor	1
37	51554	Return tube 1/8"	1
38	619-00000	Reservoir 6" Ø x 8" lg, 158 in ³ usable	1
40	51556	Vent plug	1
41	51557	Square head plug	1
42	Std.	Screw 10-24 x 3/8"	6
43	51558	Return tube (1/8 NPT)	1
44	51559	Insulated cable with lugs 9" 6 gauge	1
45	Std.	Flange hex. head screw (tap tite) 1/4"-20 x 5/8"	4

* Some parts might not be available apart.

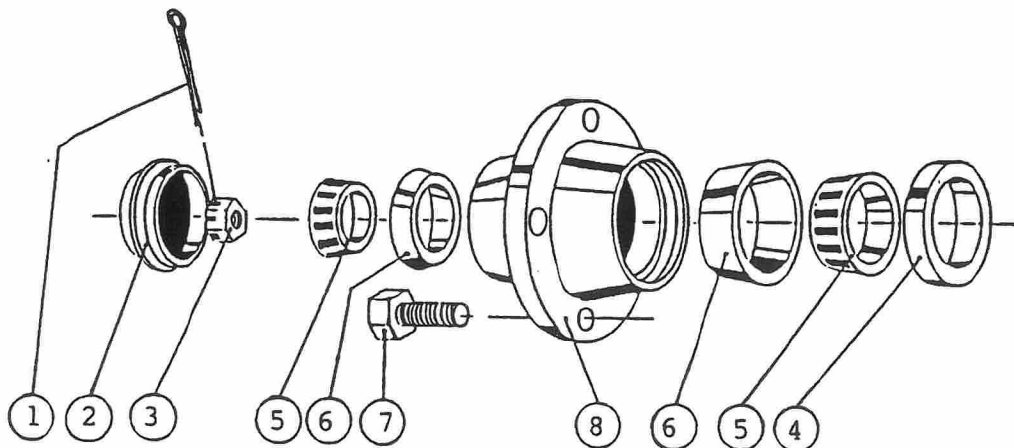
INSTALLATION OF THE ELECTRIC HYDRAULIC PUMP # 613-00001



REF.	PART #	DESCRIPTION	QTY
1	669-02501	Vent plug 1/2" NPT	1
2	666-11515	Fitting 90° 3/8" NPTM x 3/8" NPTM swivel	1
3	613-00001	Electric hydraulic pump	1
4	53063	Battery cable 4G x 36" lg	1
5	51607	Battery cable 4G x 10" lg	1
6	Std.	Bolt 5/16" NÇ x 1" lg + nylon locknut & flat washer	6
7	130-07871	Support plate	1
8	Std.	Boulon 3/8" NC x 1 1/4" lg + écrou à blocage de nylon	2
9	110-06772	Battery holder	1
10	110-04841	Threaded rod 3/8" NC + 1 nylon locknut 3/8" & 1 nylon locknut 7/16"	2
11	- - -	Battery 540 amp. minimum (not included)	1
12	130-05751	Angle	1

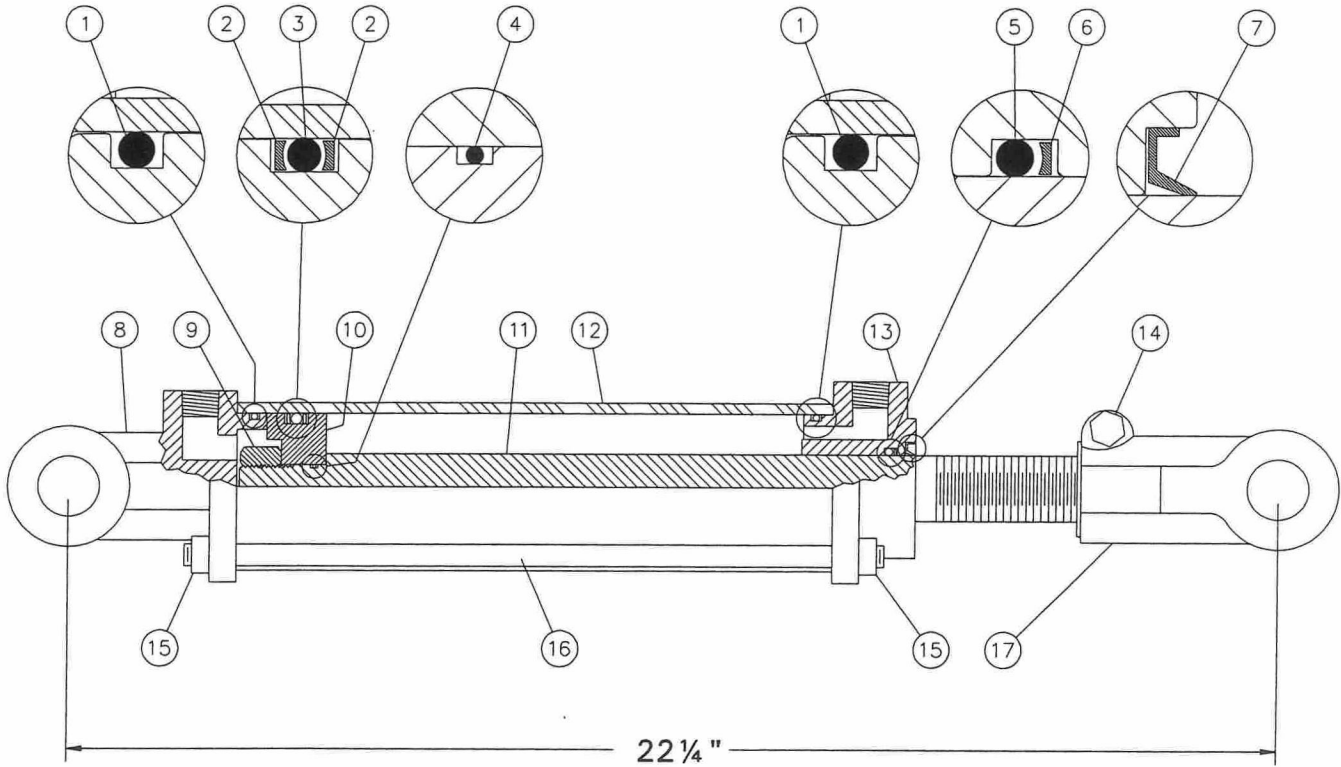
8

HUB H1000 53015



REF.	PART #	DESCRIPTION	QTY
1	Std.	Cotter pin 3/16" x 1 1/2"	1
2	53019	Dust cap 1.973 dia.	1
3	51529	Castle nut 1" NF noir.....	1
4	53021	Oil seal no. CR523696	1
5	53022	Roller bearing Timken: cone no. L44643	2
6	53023	Roller bearing Timken: cup no. L44610	2
7	53024	Rim screw 1/2"	4
8	53025	Hub only H1000	1

CYLINDER 30TR12








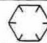

REF.	PART #	DESCRIPTION	QTY
1	See RK30TR	O-ring.....	2
2	See RK30TR	Back-up ring.....	2
3	See RK30TR	O-ring.....	1
4	See RK30TR	O-ring.....	1
5	See RK30TR	O-ring.....	1
6	See RK30TR	Back-up ring.....	1
7	See RK30TR	Wiper.....	1
8	492402	Yoke (for 3" tube).....	1
9	Std.	Nut 3/4" NF.....	1
10	492432	Piston 3" ø.....	1
11	492042	Piston rod 1 1/4".....	1
12	491742	Cylinder body 3" ø.....	1
13	492440	Cylinder head (for 3" tube).....	1
14	Std.	Bolt 3/8" NC x 2 1/4" + nut.....	1
15	Std.	Nut 3/8" NC.....	8
16	Std.	Threaded rod 3/8" NC.....	4
17	458600	Yoke (for 1 1/4" rod).....	1
NI*	8183	Pin 1" ø + cotter pin.....	2
NI*	RK30TR	Repair kit for cylinder 3" (includes # 1, 2, 3, 4, 5, 6, & 7).....	1

*NI = Not illustrated






8

TORQUE CHART

TORQUE SPECIFICATION TABLE

Thread UNC and UNF		Grade 2 				Grade 5   				Grade 8*   			
Bolt size		Torque				Torque				Torque			
Inches	mm	Pound feet min.	Pound feet max.	Newton meters min.	Newton meters max.	Pound feet min.	Pound feet max.	Newton meters min.	Newton meters max.	Pound feet min.	Pound feet max.	Newton meters min.	Newton meters max.
1/4	6.35	5	6	6.8	8.13	9	11	12.2	14.9	12	15	16.3	30.3
5/16	7.94	10	12	13.6	16.3	17	20.5	23.1	27.8	24	29	32.5	39.3
3/8	9.53	20	23	27.1	31.2	35	42	47.5	57.0	45	54	61.0	73.2
7/16	11.11	30	35	40.7	47.4	54	64	73.2	86.8	70	84	94.9	113.9
1/2	12.70	45	52	61.0	70.5	80	96	108.5	130.2	110	132	149.2	179.0
9/16	14.29	65	75	88.1	101.6	110	132	149.2	179.0	160	192	217.0	260.4
5/8	15.88	95	105	128.7	142.3	150	180	203.4	244.1	220	264	298.3	358.0
3/4	19.05	150	185	203.3	250.7	270	324	366.1	439.3	380	456	515.3	618.3
7/8	22.23	160	200	216.8	271.0	400	480	542.4	650.9	600	720	813.6	976.3
1	25.40	250	300	338.8	406.5	580	696	786.5	943.8	900	1080	1220.4	1464.5
1 1/8	25.58	-	-	-	-	800	880	1084.8	1193.3	1280	1440	1735.7	1952.6
1 1/4	31.75	-	-	-	-	1120	1240	1518.7	1681.4	1820	2000	2467.9	2712.0
1 3/8	34.93	-	-	-	-	1460	1680	1979.8	2278.1	2380	2720	3227.3	3688.3
1 1/2	38.10	-	-	-	-	1940	2200	2630.6	2983.2	3160	3560	4285.0	4827.4

* Thick nuts must be used with grade 8 bolts.

Size of screw	Thread	Pitch (mm)	Grade 4T  				Grade 7T 				Grade 8T  			
			Torque				Torque				Torque			
			Pound feet min.	Pound feet max.	Newton meters min.	Newton meters max.	Pound feet min.	Pound feet max.	Newton meters min.	Newton meters max.	Pound feet min.	Pound feet max.	Newton meters min.	Newton meters max.
M6	UNC	1.00	3.6	5.8	4.9	7.9	5.8	9.4	7.9	12.7	7.2	10	9.8	13.6
M8	UNC	1.25	7.2	14	9.8	19	17	22	23	29.8	20	26	27.1	35.2
M10	UNC	1.5	20	25	27.1	33.9	34	40	46.1	54.2	38	46	51.5	62.3
M12	UNC	1.75	28	34	37.9	46.1	51	59	69.1	79.9	57	66	77.2	89.4
M14	UNC	2.0	49	56	66.4	75.9	81	93	109.8	126	96	109	130.1	147.7
M16	UNC	2.0	67	77	90.8	104.3	116	130	157.2	176.2	129	145	174.8	196.5
M18	UNC	2.0	88	100	119.2	136	150	168	203.3	227.6	175	194	237.1	262.9
M20	UNC	2.5	108	130	146.3	176.2	186	205	252	277.8	213	249	288.6	337.4
M8	UNF	1.0	12	17	16.3	23	19	27	25.7	36.6	22	31	29.8	42
M10	UNF	1.25	20	29	27.1	39.3	35	47	47.4	63.7	40	52	54.2	70.5
M12	UNF	1.25	31	41	42	55.6	56	68	75.9	92.1	62	75	84	101.6
M14	UNF	1.5	52	64	70.5	86.7	90	106	122	143.6	107	124	145	168
M16	UNF	1.5	69	83	93.5	112.5	120	138	162.6	187	140	158	189.7	214.1
M18	UNF	1.5	100	117	136	158.5	177	199	239.8	269.6	202	231	273.7	313
M20	UNF	1.5	132	150	178.9	203.3	206	242	279.1	327.9	246	289	333.3	391.6

Use the above torques when special torque is not given.

NOTE: These values apply to fasteners as received from supplier, dry, or when lubricated with normal engine oil. They do not apply if extreme pressure lubricants are used.