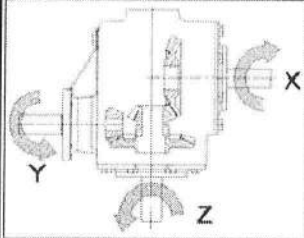


<b>Designation</b> S001	
<b>Code</b> S0010790/1	
<b>Date</b> 29-08-03	
<b>Company</b>	
<b>Technical specification</b> RUOTA LIBERA	
<b>Ref.</b>	
<b>Configuration</b> I	
	
<b>MOLTIPLICATORE RIDUTTORE</b>	
<b>Input</b> Z	<b>Output</b> X-Y

REDUCO reserves the right to change product specifications without any notice

Ratio	Rated input r.p.m.	Rated input power		Rated output torque daNm	Weight Kg	Lubricant oil					
		HP	Kw			Type	qt Lt.				
i 1:3-1.9:1	540	50			30	SAE.90EP					
Bevel couplings				Cylindrical couplings							
Helicoid	Straight	Teeth number				Helicoid	Straight	Teeth number			Module
		71	72	73	74			71	72	73	
*	*	15	25		5.75						
*	*			12	37	4.23					
Components material											
Casing EN-GJS 400-15		Shaft Z 20MnCr5 UNI 8550		Shaft X-Y 20MnCr5 UNI 8550		Bevel gear 20MnCr5 UNI 8550		Spur gear			

Bearings	
A	32208
B	30205
C	30207
D	32207
E	32207
F	30207
G	
H	

ATTENTION the rotating parts are dangerous and must be properly shielded. REDUCO declines any responsibility.

ATTENZIONE gli organi in rotazione sono pericolosi e devono essere adeguatamente protetti. La ditta Reduco declina ogni responsabilità

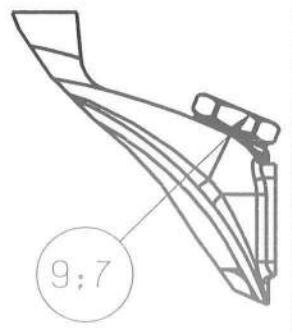
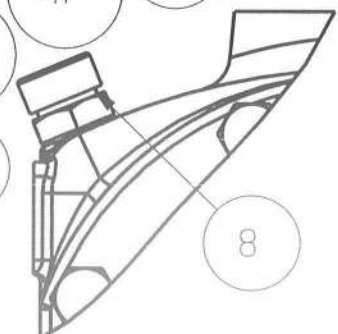
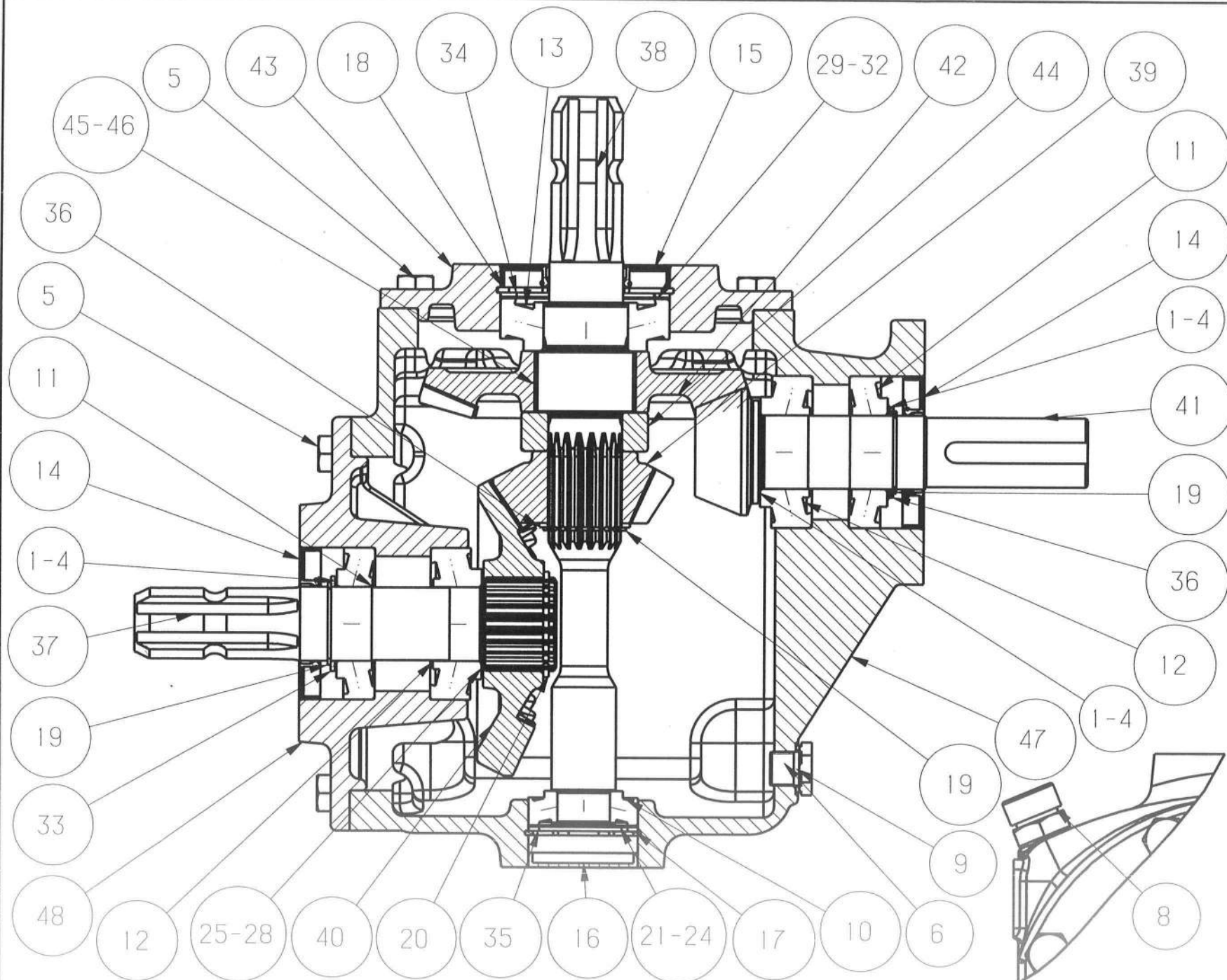
REDUCO srl 20065 Inzago (MI) -Italia- Tel.0295311192 Fax0295311193

La proprietà di questo disegno e' tutelata a termini di Legge E' vietato riprodurre e/o cedere a terzi senza la ns. autorizzazione scritta

# Reduco

Designation S001  
 Code S0010790-1  
 Date 08/10/04  
 Company  
 Technical specification  
 Ref.  
 Configuration 1  
 Ratio 1:3 - 1.9:1

**AA0110000**



<b>DISTINTA BASE</b>			
INDICE	CODICE	DENOMINAZIONE	Q.TA'
1	C3001	SP.REG.35X45X0.20	3
2	C3002	SP.REG.35X45X0.25	3
3	C3003	SP.REG.35X45X0.35	3
4	C3004	SP.REG.35X45X0.50	3
5	C016043	VITE TE INT.FIL.UNI 5739 M10X25-8.8	16
6	C080003	INDICATORE LIVELLO A VISTA M16X1.5 OTTONE	1
7	C080006	TAPPO CILINDRICO M16*1.5	1
8	C081001	TAPPO SFIATO M16X1.5	1
9	C082001	RONDELLA 16x22x1.5	2
10	C120012	CUSC.RULLI CONICI 25X52X16.25 :SKF 30205 J2	1
11	C120030	CUSC.RULLI CONICI 35X72X18.25 :SKF 30207 J2	2
12	C120031	CUSC.RULLI CONICI 35X72X24.25 :SKF 32207 J2	2
13	C120041	CUSC.RULLI CONICI 40X80X24.75 :SKF 32208	1
14	C200355	BA 35X72X10	2
15	C200358	BA 35X80X10	1
16	C201021	T. OTT. 52X7	1
17	C250044	ANELLO ELAST.X FORO UNI 7437 D=52	1
18	C250069	ANELLO ELAST.X FORO UNI 7437 D=80	1
19	C251032	ANELLO ELAST.X ALBERO UNI 7435 D=35	3
20	C253016	ANELLO ELAST.X ALBERO UNI 7436 D=45	1
21	C300005	SP.REG.42X52X0.20	1
22	C300006	SP.REG.42X52X0.25	1
23	C300007	SP.REG.42X52X0.35	1
24	C300008	SP.REG.42X52X0.50	1
25	C300199	SP.REG.40X50X0.20	1
26	C300236	SP.REG.40X50X0.25	1
27	C300262	SP.REG.40X50X0.35	1
28	C300299	SP.REG.40X50X0.50	1
29	C300395	SP.REG.70X80X0.20	1
30	C300427	SP.REG.70X80X0.25	1
31	C300459	SP.REG.70X80X0.35	1
32	C300491	SP.REG.70X80X0.50	1
33	C301001	SPESS 35*45*2	1
34	C301003	SPESS 65*80*2	1
35	C301018	SPESS 42*52*2	1
36	C301031	SPESS 35*43*2	2
37	D010284	ALB Z 1.3/8" Z=6 R=1.47 R145 S001	1
38	D050575	ALB INGR. RL +IPTD 1.3/8" Z=6 S001	1
39	D200574	PIGNONE CONICO Z=15 M=5.75 S001	1
40	D210004	CORONA CONICA Z=25 m=5.75 R=1.92 R240-R230	1
41	D220094	PIGNONE CONICO Z=12 m=4.23	1
42	D300046	CORONA CONICA Z=37 m.4.23 R=3 R240-R340	1
43	D510632	FLANCIA R 240	1
44	D800577	DISTANZIALE 35X60X19 S001	1
45	D900256	NOTTOLINO L=28	2
46	D900275	MOLLA PER RUOTA LIBERA	2
47	D400578 I	SCATOLA S001	1
48	D520576 I	FLANGIA PORTACORONA S001	1