

GRUPPI VENTOLA • FAN UNIT • LUFERRAD EINHEIT • GROUPE VENTILATEUR • GRUPO VENTILADOR

PNEUS

TAV. TAB. 7.1-7.2
R. 0

CODICE/CODE	DENOMINAZIONE		BEZEICHNUNG		DENOMINATION		DENOMINACION		DENOMINACAO	
	2200	1650	1100	880	650	COLLAR	SCHELLE	COLLAR	COLLIER	COLLIER
17 308.0162	2	2	2	2	2	COLLARE	COLLARE	COLLARE	COLLIER	COLLIER
18 308.0165	10	10	10	10	10	COLLARE	SCHELLE	COLLARE	COLLIER	COLLIER
19 308.01612Z	1	1	1	1	1	RETE ASPIRAZIONE	ANSAUGENNETZ	RESEAU ASPIRATION	MALLA DE ASPIRACION	MALLA DE ASPIRACION
20 001.63435	1	1	1	1	1	COPERCHIO	DECKEL	COVER	TAPA	TAPA
20 001.63435B	1	1	1	1	1	COPERCHIO	DECKEL	COVER	TAPA	TAPA
21 035.208	1	1	1	1	1	DISTANZIALE	DISTANZSTUECK	SPACER	SEPARADOR	ESPAZADOR
22 035.050VN	1	1	1	1	1	VENTOLA	FAN	FAN	VENTILATEUR	VENTOINHA
23 081.519VN	1	1	1	1	1	SUPPORTO	HALTER	SUPPORT	SOPORTE	SUSTENTACAO
24 017.207	14	14	14	14	14	VITE	SCHRAUBE	SCREW	TORNILLO	TORNILLO
25 AM4500008	24	24	24	24	24	RONDELLA	SCHIBE	WASHER	ARANDELA	ANILHA
26 AM2300008	26	26	26	26	26	DADO	MUTTER	NUT	ARANDELA	PORCA
27 AM4500010	47	47	47	47	47	RONDELLA	SCHIBE	WASHER	TUERCA	PORCA
28 017.214	14	14	14	14	14	VITE	SCHRAUBE	SCREW	ARANDELA	ANILHA
28 AM4708242	18	16	16	16	16	RONDELLA	SCHIBE	WASHER	TORNILLO	PARAFUSO
30 017.206	8	8	8	8	8	VITE	SCHRAUBE	SCREW	ARANDELA	ANILHA
31 017.010	16	16	16	16	16	RONDELLA	SCHRAUBE	WASHER	ARANDELA	ANILHA
32 017.368A	16	16	16	16	16	VITE	SCHRAUBE	SCREW	ARANDELA	ANILHA
33 017.217A	12	12	12	12	12	VITE	SCHRAUBE	SCREW	TORNILLO	PARAFUSO
34 AM2300010	30	30	30	30	30	DADO	MUTTER	NUT	TORNILLO	PARAFUSO
35 AM4500012	8	8	8	8	8	RONDELLA	SCHIBE	WASHER	TUERCA	PORCA
36 AM0101280	4	4	4	4	4	VITE	SCHRAUBE	SCREW	ARANDELA	ANILHA
37 AM3100012	4	4	4	4	4	DADO	MUTTER	NUT	TORNILLO	PARAFUSO
38 061.1102VN	1	1	1	1	1	STAFFA	BRACKET	BRACKET	TUERCA	PORCA
39 061.1103VN	1	1	1	1	1	STAFFA	BRACKET	BRACKET	BRIDA	SUPPORTER
40 017.208	2	2	2	2	2	VITE	BUGEL	BUGEL	BRIDA	SUPPORTER
41 017.065	2	2	2	2	2	VITE	SCHRAUBE	SCREW	BRIDA	SUPPORTER
42 017.016	26	26	26	26	26	RONDELLA	SCHRAUBE	SCREW	TORNILLO	PARAFUSO
43 AM0101035	14	14	14	14	14	VITE	SCHRAUBE	SCREW	ARANDELA	ANILHA
44 049.0204	4	4	4	4	4	GUARNIZIONE	SEAL	SEAL	TORNILLO	PARAFUSO
45 047.0302	4	4	4	4	4	RACCORDO	ANSCHLUB	CONNECTION	SEAL	SEAL
46 047.320B	1	1	1	1	1	GOMITO	REDUCTION	REDUCTION	TORNILLO	ANILHA
47 047.510	2	2	2	2	2	COLLETORE	KOLLEKTOR	COLLECTOR	REDUCCION	REDUCA
48 013.041	2	2	2	2	2	TUBO	SCHLAUCH	TUYAU	RECOLLECTOR	RECOLHEDOR
49 029.021	4	4	4	4	4	MOLLA	FEDER	RESSORT	TUBO	MANGUEIRA
51 047.512	2	2	2	2	2	COLLETORE	KOLLEKTOR	COLLECTOR	MUELLE	MOLA
52 047.1111	2	2	2	2	2	TAPPO	VERCHLUSS	BOUCHON	RECOLLECTOR	RECOLHEDOR
						PLUG	VERCHLUSS	BOUCHON	TAPON	PLUGUE

GRUPPI VENTOLA • FAN UNIT • LUFERRAD EINHEIT • GROUPE VENTILATEUR • GRUPO VENTILADOR
PNEUS

TAV. 7.1-7.2
 TAB. R.
 TAF. 0

T.C.S.	CODICE/COE	660	880	1100	1650	2200	DENOMINAZIONE	DENOMINATION	BEZEICHNUNG	DENOMINATION	DENOMINATION	DENOMINAZIONE	DENOMINAZIONE	DENOMINAZIONE	DENOMINAZIONE
							RIDUZIONE	REDUCTION	VERKLEINERUNG	REDUCTION	REDUCCION	REDUCCION	REDUCCION	REDUCCION	REDUCCION
53	047.300	2	2	2	2	2	NIPLÉS	NIPLÉS	NIPLÉS	NIPLÉS	NIPLÉS	NIPLÉS	NIPLÉS	NIPLÉS	REDUCCAO
54	047.338	2	2	2	2	2	PORTA LUCI	LINGJTS HOLDER	LICHT GEHÁUSE	PORTE-FELIX	PORTE-FELIX	LICHT GEHÁUSE	SOPORTE LUZ	SOPORTE LUZ	NIPLES
55	061.340VN	1	1	1	1	1	PORTA LUCI	LINGJTS HOLDER	LICHT GEHÁUSE	PORTE-FELIX	PORTE-FELIX	LICHT GEHÁUSE	SOPORTE LUZ	SOPORTE LUZ	SUPORTE LUZ
56	061.342VN	1	1	1	1	1	STAFFA	BRACKET	BÜGEL	BRIDE	BRIDE	BÜGEL	SOPORTE LUZ	SOPORTE LUZ	SUPORTE LUZ
57	061.341VN	2	2	2	2	2	KIT ILLUMINAZIONE	LIGHTING KIT SYSTEM	KIT INSTALLATION D'ÉCLAIRAGE	AUSTA/TUNGLICHTER	AUSTA/TUNGLICHTER	KIT INSTALLATION D'ÉCLAIRAGE	SOPORTE LUZ	SOPORTE LUZ	SUPORTE LUZ
58	066.004Q	1	1	1	1	1	GOMMINA PASSACAVO	RUBBER	GUMMI	CAOUTCHOUC PASSE-CÁBLE	CAOUTCHOUC PASSE-CÁBLE	PEQUEÑA GOMA PASACABLE	SOPORTE LUZ	SOPORTE LUZ	SUPORTE LUZ
59	049.102	4	4	4	4	4	STAFFA	BRACKET	BÜGEL	BRIDE	BRIDE	BÜGEL	SOPORTE LUZ	SOPORTE LUZ	SUPORTE LUZ
60	061.1454	1	1	1	1	1	VITE	SCREW	SCHRAUBE	VIS	VIS	SCHRAUBE	SOPORTE LUZ	SOPORTE LUZ	SUPORTE LUZ
61	017.247	2	2	2	2	2	PIEDINO	SUPPORT	Standfuß	PIED DE SUOTTIEN	PIED DE SUOTTIEN	Standfuß	SOPORTE LUZ	SOPORTE LUZ	SUPORTE LUZ
62	A01000403VN	1	1	1	1	1	PERNO	PIN	ZAPFEN	PIVOT	PIVOT	ZAPFEN	SOPORTE LUZ	SOPORTE LUZ	SUPORTE LUZ
63	017.097	1	1	1	1	1	PERNO	PIN	ZAPFEN	PIVOT	PIVOT	ZAPFEN	SOPORTE LUZ	SOPORTE LUZ	SUPORTE LUZ
64	017.370A	1	1	1	1	1	COPIGLIA	ELASTIC PIN	ELASTISCH. SPLINT	PIN	PIN	ELASTISCH. SPLINT	SOPORTE LUZ	SOPORTE LUZ	SUPORTE LUZ
65	047.318A	1	1	1	1	1	PROLUNGA	EXTENSION	VERLÄNGERUNGSSSTÜCK	RALLONGE	RALLONGE	VERLÄNGERUNGSSSTÜCK	SOPORTE LUZ	SOPORTE LUZ	SUPORTE LUZ
66	001.604GC	1	1	1	1	1	TERMINALE PRJ	TERMINAL	SCHWEIDESCHUH	TERMINAL	TERMINAL	SCHWEIDESCHUH	SOPORTE LUZ	SOPORTE LUZ	SUPORTE LUZ
66	001.604VC	1	1	1	1	1	TERMINALE OMA	TERMINAL	SCHWEIDESCHUH	TERMINAL	TERMINAL	SCHWEIDESCHUH	SOPORTE LUZ	SOPORTE LUZ	SUPORTE LUZ
66	001.604BC	1	1	1	1	1	TERMINALE BARG-AGRIC	TERMINAL	SCHWEIDESCHUH	TERMINAL	TERMINAL	SCHWEIDESCHUH	SOPORTE LUZ	SOPORTE LUZ	SUPORTE LUZ
67	308.01613.01	3	3	3	3	3	BOCCHETTA	DRAIN	ABSAUGDÜSE	BOUCHE	BOUCHE	ABSAUGDÜSE	SOPORTE LUZ	SOPORTE LUZ	SUPORTE LUZ
68	308.01613.02	3	3	3	3	3	BOCCHETTA	DRAIN	ABSAUGDÜSE	BOUCHE	BOUCHE	ABSAUGDÜSE	SOPORTE LUZ	SOPORTE LUZ	SUPORTE LUZ
69	308.01613.03	3	3	3	3	3	BECCUCCIO	BEAK	ABFLUSSROHR	BEC	BEC	ABFLUSSROHR	SOPORTE LUZ	SOPORTE LUZ	SUPORTE LUZ
70	017.127	24	24	24	24	24	VITE	SCREW	SCHRAUBE	VIS	VIS	SCHRAUBE	SOPORTE LUZ	SOPORTE LUZ	SUPORTE LUZ
71	017.304	24	24	24	24	24	DADO	NUT	MUTTER	EGROU	EGROU	MUTTER	SOPORTE LUZ	SOPORTE LUZ	SUPORTE LUZ
72	013.040	3	3	3	3	3	TUBO	HOSE	SCHLAUCH	TUYAU	TUYAU	SCHLAUCH	SOPORTE LUZ	SOPORTE LUZ	SUPORTE LUZ
73	047.1902	3	3	3	3	3	RACCORDO	CONNECTION	ANSCHLÜB	RACCORD	RACCORD	ANSCHLÜB	SOPORTE LUZ	SOPORTE LUZ	SUPORTE LUZ
74	048.0100	3	3	3	3	3	GHIERA	RING NUT	NUTMUTTER	COLLIER DE SERRAGE	COLLIER DE SERRAGE	NUTMUTTER	SOPORTE LUZ	SOPORTE LUZ	SUPORTE LUZ
75	047.321	3	3	3	3	3	RUBINETTO	COCK	SCHLUSSHANDVENTIL	RUBINET	RUBINET	SCHLUSSHANDVENTIL	SOPORTE LUZ	SOPORTE LUZ	SUPORTE LUZ
76	047.500D	3	3	3	3	3	RACCORDO	CONNECTION	ANSCHLÜB	RACCORD	RACCORD	ANSCHLÜB	SOPORTE LUZ	SOPORTE LUZ	SUPORTE LUZ
77	049.1002	3	3	3	3	3	ANELLO IN GOMMA	RUBBER RING	GUMMING	BAGUE EN CAOUTCHOUC	BAGUE EN CAOUTCHOUC	GUMMING	SOPORTE LUZ	SOPORTE LUZ	SUPORTE LUZ
78	053.7010	3	3	3	3	3	PATTINO	GUIDE SHOE	GLEITSTUECK	PATIN	PATIN	GLEITSTUECK	SOPORTE LUZ	SOPORTE LUZ	SUPORTE LUZ
79	061.4612VN	1	1	1	1	1	LAMIERA	PLATE	BLATT	PLAQUE	PLAQUE	BLATT	SOPORTE LUZ	SOPORTE LUZ	SUPORTE LUZ
80	001.6055GC	2	2	2	2	2	CURVA PRJ	CURVE	KURVE	COURBE	COURBE	KURVE	SOPORTE LUZ	SOPORTE LUZ	SUPORTE LUZ
80	001.6055VC	2	2	2	2	2	CURVA OMA	CURVE	KURVE	COURBE	COURBE	KURVE	SOPORTE LUZ	SOPORTE LUZ	SUPORTE LUZ
80	001.6055BC	2	2	2	2	2	CURVA BARG-AGRIC	CURVE	KURVE	COURBE	COURBE	KURVE	SOPORTE LUZ	SOPORTE LUZ	SUPORTE LUZ
81	047.306A	2	2	2	2	2	RIDUZIONE	REDUCTION	VERKLEINERUNG	REDUCTION	REDUCTION	VERKLEINERUNG	SOPORTE LUZ	SOPORTE LUZ	SUPORTE LUZ
82	047.0948	2	2	2	2	2	CURVA	CURVE	KURVE	COURBE	COURBE	KURVE	SOPORTE LUZ	SOPORTE LUZ	SUPORTE LUZ
84	061.1548	2	2	2	2	2	TUBO	HOSE	SCHLAUCH	TUYAU	TUYAU	SCHLAUCH	SOPORTE LUZ	SOPORTE LUZ	SUPORTE LUZ
85	001.622C	2	2	2	2	2	FASCETTA	CLAMP	SCHL	COLLIER	COLLIER	SCHL	SOPORTE LUZ	SOPORTE LUZ	SUPORTE LUZ

DENOMINAZIONE

DENOMINATION

BEZEICHNUNG

DENOMINATION

DENOMINATION

DENOMINAZIONE

DENOMINAZIONE

DENOMINAZIONE

GRUPPI VENTOLA • FAN UNIT • LUFERRAD EINHEIT • GROUPE VENTILATEUR • GRUPO VENTILADOR

PNEUS

TRAV. 7.1-7.2
TAB. 1
PAC. 0

CODICE/CODE		60	880	1100	1650	2200	DENOMINAZIONE	BEZEICHNUNG	DENOMINATION	DENOMINACION	DENOMINACAO
85	001.623C	2	2	2	2	2	DIFFUSORE ONIA	DIFFUSEUR	DIFFUSEUR	DIFFUSOR	DIFFUSOR
85	001.622BC	2	2	2	2	2	DIFFUSORE BARG-AGRIC	DIFFUSEUR	DIFFUSEUR	DIFFUSOR	DIFFUSOR
86	001.607GC	1	1	1	1	1	PROLUNGA PRJ	VERLANGERUNGSSTUCK	RALLONGE	PROLONGACION	EXTENSAO
86	001.607VC	1	1	1	1	1	PROLUNGA ONIA	VERLANGERUNGSSTUCK	RALLONGE	PROLONGACION	EXTENSAO
86	001.607BC	1	1	1	1	1	PROLUNGA BARG-AGRIC	VERLANGERUNGSSTUCK	RALLONGE	PROLONGACION	EXTENSAO
87	017.306	6	6	6	6	6	DADO	MUTTER	ECROU	TUERCA	PORCA
88	017.203	6	6	6	6	6	VITE	SCHRAUBE	VIS	TORNILLO	PARAFUSO
88	017.208	2	2	2	2	2	VITE	SCHRAUBE	VIS	TORNILLO	PARAFUSO
90	017.505	4	4	4	4	4	VITE	SCHRAUBE	VIS	TORNILLO	PARAFUSO
91	061.679	1	1	1	1	1	DIFFUSORE	DIFFUSEUR	DIFFUSEUR	DIFFUSOR	DIFFUSOR
92	061.1537	1	1	1	1	1	FLANGIA	FLANSCH MIT OR	BRIDE	BRIDA	FALANGE
93	061.0241	1	1	1	1	1	BARRA	STANGE	BAR	BARRA	BARRA
94	061.0244	1	1	1	1	1	BRACCIO DX	ARM	ARM	DEBOUT	ALTO
95	111.910	2	2	2	2	2	MARTINETTO IDRAULICO	HYDRAUL VERSCHIEBUNG	DEPALCEMENT HIDRAUL.	ACCIONAMIENTO IDRAULICO	DESLOCAMENTO HIDR.
96	AM0101060	4	4	4	4	4	VITE	SCHRAUBE	VIS	TORNILLO	PARAFUSO
97	059.803	2	2	2	2	2	MOLLA	FEDER	RESSORT	MUELLE	MOLA
98	AM4600027	2	2	2	2	2	RONDELLA	SCHIBE	RONDELLE	ARANDELA	ANILHA
99	AM2300020	4	4	4	4	4	DADO	MUTTER	ECROU	TUERCA	PORCA
100	061.0247	2	2	2	2	2	PERNO	ZAPFEN	PIVOT	TUERCA	PORCA
101	017.223C	4	4	4	4	4	VITE	SCHRAUBE	VIS	TORNILLO	PARAFUSO
102	061.0246	2	2	2	2	2	GUIDA	ANLEITUNG	GUIDE	GUIA	GUIA
103	017.236A	1	1	1	1	1	VITE	SCHRAUBE	VIS	TORNILLO	PARAFUSO
104	AM7010105	2	2	2	2	2	INGRASSATORE	SCHMIERER	TUBE DE GRAISSE	TUBO DE GRASA	PARAFUSO
105	AM0216100	1	1	1	1	1	VITE	SCHRAUBE	VIS	TORNILLO	LUBRIFICACAO
106	AM4500016	4	4	4	4	4	RONDELLA	SCHIBE	RONDELLE	ARANDELA	PARAFUSO
107	AM3100016	2	2	2	2	2	DADO	MUTTER	ECROU	TUERCA	ANILHA
108	AA3540420	1	1	1	1	1	MARTINETTO IDRAULICO	HYDRAUL VERSCHIEBUNG	DEPALCEMENT HIDRAUL.	ACCIONAMIENTO IDRAULICO	PORCA
109	061.0242	1	1	1	1	1	TELAIO	RAHMEN	CHASSIS	ACCIONAMIENTO IDRAULICO	DESLOCAMENTO HIDR.
110	AM4500020	2	2	2	2	2	RONDELLA	SCHIBE	RONDELLE	ARANDELA	QUADRO
111	056.409	4	4	4	4	4	TAPPO	VERCHUSS	BOUCHON	ARANDELA	ANILHA
112	056.407	2	2	2	2	2	TAPPO	VERCHUSS	BOUCHON	ARANDELA	ANILHA
113	061.0248	2	2	2	2	2	STAFFA	BUGEL	BOUCHON	TAPON	PLUGUE
114	061.0249	2	2	2	2	2	PIATTO	TELLER	BRIDE	BRIDA	PLUGUE
115	061.0243	1	1	1	1	1	BRACCIO SX	ARM	PLAT	PLATO	SUPORTER
116	055.1306	2	2	2	2	2	VOLANTINO	GRIP HANDLE	DEBOUT	BRAZO	ALTO
117	061.0245	2	2	2	2	2	PUNTA BRACCIO	EINSTELKNOPF	BOUYON	MANDO	COMANDO
								ARM	DEBOUT	BRAZO	ALTO

GRUPPI VENTOLA • FAN UNIT • LUFERRAD EINHEIT • GROUPE VENTILATEUR • GRUPO VENTILADOR

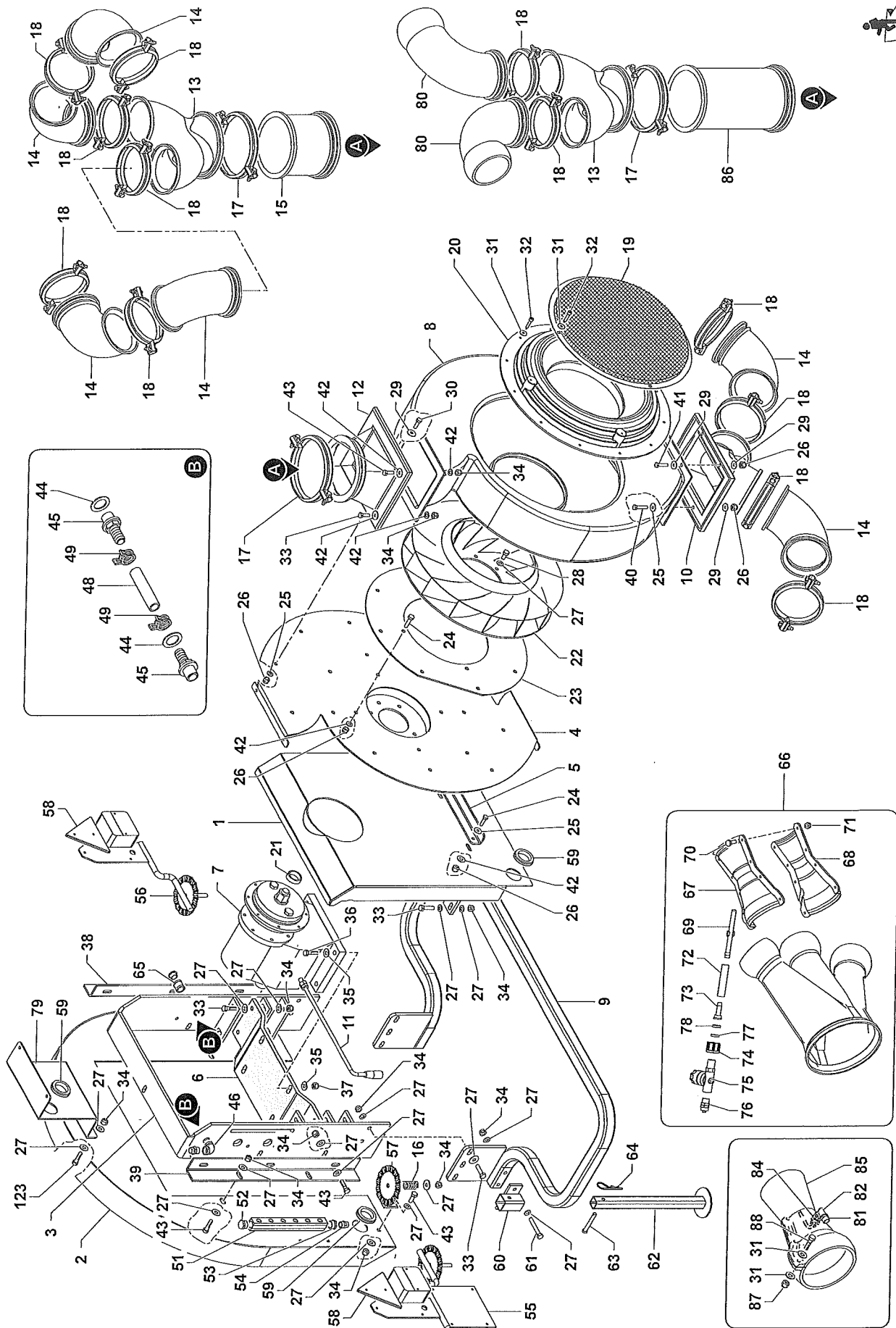
TAV. 7.1-7.2
TAB. TAF.
R. 0

PNEUS

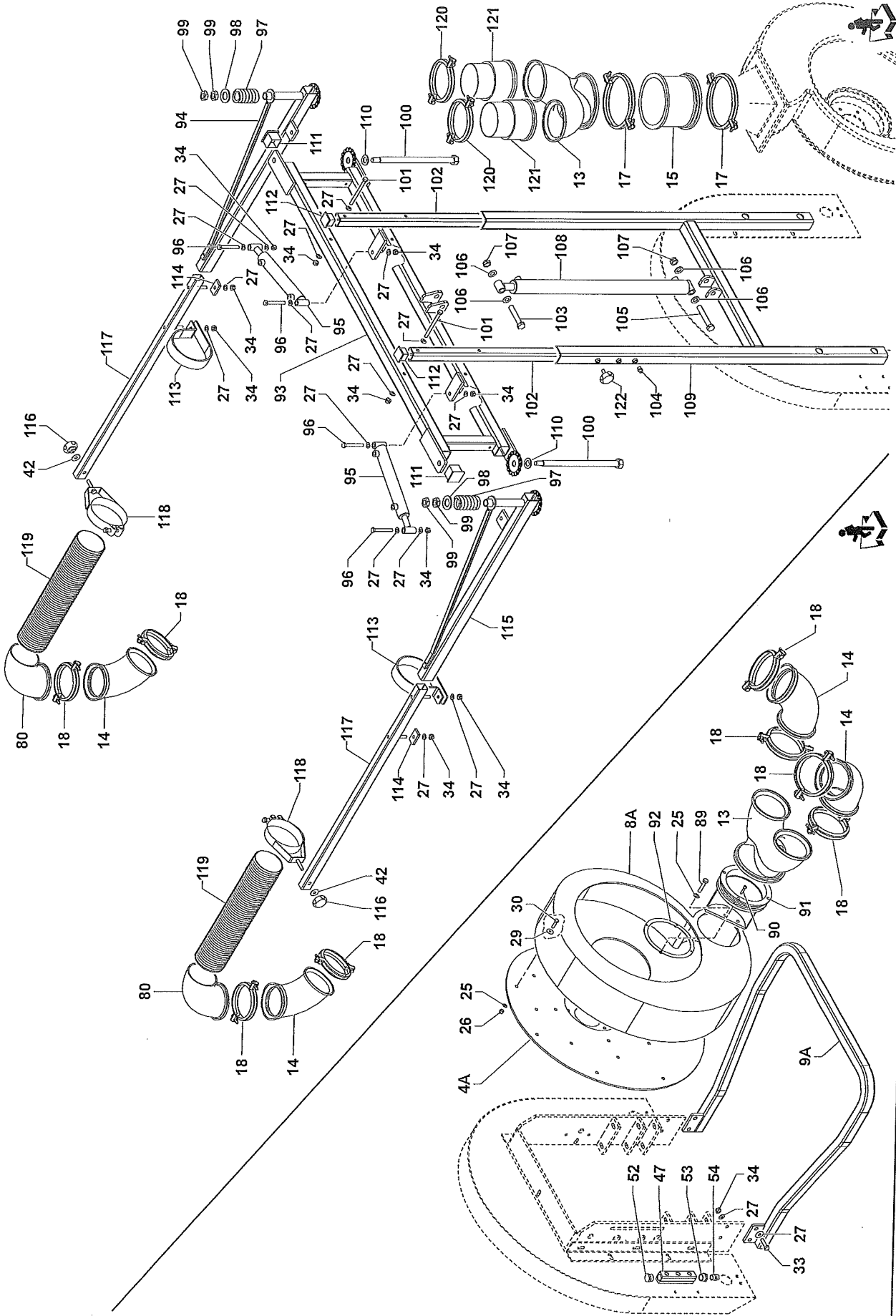
FO.S.	660	880	1100	1650	2200	CODICE/CODE	DENOMINAZIONE	DENOMINATION	BEZEICHNUNG	DENOMINATION	DENOMINACION	DENOMINACAO
118	2	2	2	2	2	061.02410	FASCETTA	CLAMP	SHELL	COLLIER	FAJA	BRACADEIRA
119	2	2	2	2	2	013.033	TUBO	HOSE	SCHLAUCH	TUYAU	TUBO	MANGUEIRA
120	2	2	2	2	2	028.035	FASCETTA	CLAMP	SHELL	COLLIER	FAJA	BRACADEIRA
121	2	2	2	2	2	001.626C	PROLUNGA PRJ	EXTENSION	VERLANGERUNGSSTUCK	RALLONGE	PROLONGACION	EXTENSAO
121	2	2	2	2	2	001.628BC	PROLUNGA BARG-AGRIC	EXTENSION	VERLANGERUNGSSTUCK	RALLONGE	PROLONGACION	EXTENSAO
121	2	2	2	2	2	001.627C	PROLUNGA DMA	EXTENSION	VERLANGERUNGSSTUCK	RALLONGE	PROLONGACION	EXTENSAO
122	4	4	4	4	4	055.1406	VOLANTINO	GRIP HANDLE	EINSTELKNOPF	BOUTON	MANDO	COMANDO
123	4	4	4	4	4	AM101030	VITE	SCREW	SCHRAUBE	VIS	TORNILLO	PARAFUSO



TAV.	R.
TAB.	7.1
TAF.	0



PNEUS (CHIOCCIOLA USCITA DOPPIA)



VARIANTI PNEUS (CHIOCCIOLA USCITA SINGOLA - CHIOCCIOLA USCITA DOPPIA CON SCAVALLANTE)

TAV.	R.
TAB.	7.2
TAF.	0

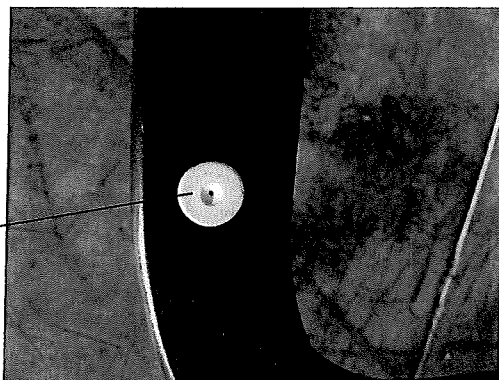


HOW TO KNOW THE FLOW RATE ON THE PNEUS SYSTEM (VENTURI)

As we well know the CIMA sprayers have the flow rate calibration but after a discussion with our technical department and the check on the caliber of CIMAs, we consider our solution the best and precise one.

In fact the flow rate on our sprayers are determined from the hole on the nozzle and it allows to the operator a uniform spray at the flow rate he desire.

Picture of the hole of the ceramic nozzle mounted on PNEUS SYSTEM



Hole of 1,00

i.e. this is a standard 1,00 hole . to know how much water we spray on field you consider the spray label hereby

HOLE Ø (mm)	DISC Ø (mm)	COD	l/min (Forata)																								
			1 bar	2 bar	3 bar	4 bar	5 bar	6 bar	7 bar	8 bar	9 bar	10 bar	15 bar	20 bar													
0,8	30	HP15008	0,48	0,67	0,83	0,95	1,07	1,17	1,26	1,35	1,43	1,51	1,84	2,13	HP18008	0,38	0,53	0,65	0,75	0,84	0,92	0,99	1,06	1,13	1,19	1,46	1,68
		HP30008	0,62	0,88	1,08	1,24	1,39	1,52	1,65	1,76	1,87	1,97	2,41	2,78	HP15010	0,48	0,68	0,84	0,97	1,08	1,18	1,28	1,37	1,45	1,53	1,87	2,16
1,0	18	HP15012	1,02	1,45	1,77	2,04	2,29	2,50	2,71	2,89	3,07	3,23	3,96	4,57	HP18012	0,80	1,13	1,39	1,60	1,79	1,95	2,12	2,27	2,41	2,54	3,11	3,59
		HP30012	1,46	2,07	2,54	2,93	3,27	3,59	3,87	4,14	4,39	4,63	5,67	6,55	HP15015	1,01	1,43	1,76	2,03	2,26	2,48	2,68	2,86	3,04	3,20	3,92	4,53
1,5	18	HP15018	2,20	3,11	3,82	4,41	4,93	5,40	5,83	6,23	6,61	6,87	8,53	9,85	HP18018	1,46	2,07	2,54	2,93	3,27	3,59	3,87	4,14	4,39	4,63	5,67	6,55
		HP30018	1,57	2,22	2,73	3,15	3,52	3,85	4,16	4,45	4,72	4,98	6,09	7,04	HP15020	1,76	2,49	3,05	3,52	3,94	4,31	4,66	4,98	5,28	5,57	6,82	7,88
1,8	18	HP15020	2,57	3,64	4,46	5,14	5,75	6,30	6,81	7,27	7,72	8,13	9,96	11,50	HP18020	2,57	3,64	4,46	5,14	5,75	6,30	6,81	7,27	7,72	8,13	9,96	11,50
		HP30020	1,76	2,49	3,05	3,52	3,94	4,31	4,66	4,98	5,28	5,57	6,82	7,88													

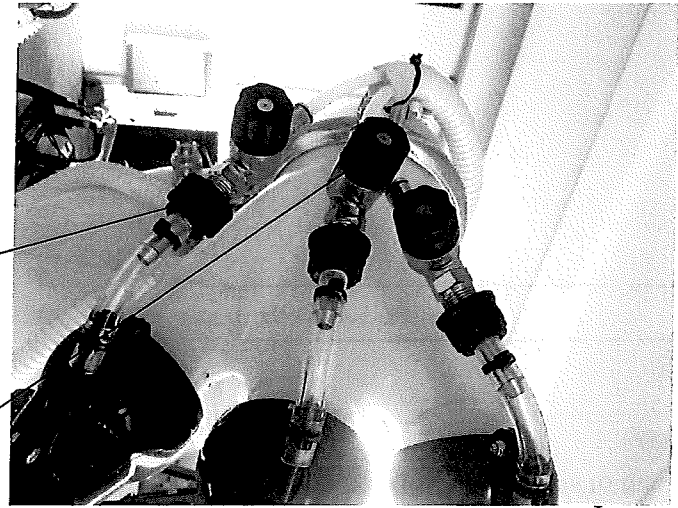
PR5 0537020
 PR5 0537018
 PR5 0537015
 PR5 0537012
 PR5 0537010



As you can see the flow rate l/min that a nozzle, of 1,00 hole dimension at 4 bar, sprays is constantly 1,24 l/min. This is only possibility to be sure about the flow rate. Even CIMMA is using the nozzle inside and the flow rate is determined by the hole of the nozzles.

HOW TO CHANGE THE NOZZLES INSIDE

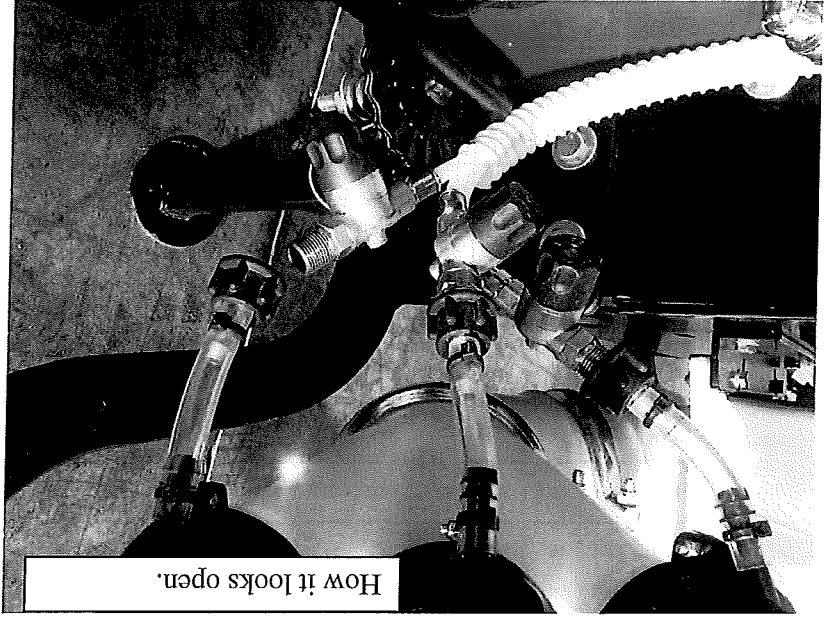
1st step



Taps to open and close the spray nozzles. Not water is coming out when closed

Place where is located the ceramic nozzles.

2 step



How it looks open.

Where is located the nozzle that can be changed based on customer needs.

