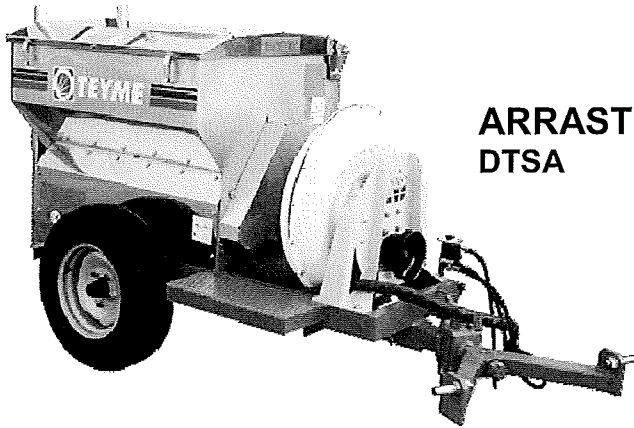




## ESPOLVOREADORES

## MANUAL DE INSTRUCCIONES



ARRASTRADO  
DTSA

SUSPENDIDO  
AIRDUST



## **INDEX**

### **Introduction**

Safety regulations.....	pages 20-22
Rules	
Operator safety	
Safety with the equipment	
Safety against torsion	
Storage safety	

### **Operator's manual**

Starting up.....	pages 23-31
Attachment of the unit and starting up	
Special units	
Optional equipment (revolving ball-and-socket)	
Revolving ball-and-socket to coupling	
Revolving ball-and-socket to hydraulic arms	
Transport axle	
Service brakes	
Roadworthiness	
Gearbox	
Maintenance.....	pages 32-34.
Cleaning.....	page 35.
Dosage table.....	page 36.
Declaration CE .....	page 55.

## **INTRODUCTION**

We are very grateful for your having purchased one of our *TEYME* equipment for treatment and crop protection.

We wish this equipment will allow you to do everything you expect from it and for that reason we ask you to attentively read and follow all the instructions in this manual, which will allow you to enjoy the performances of your equipment to the maximum and much longer. This manual intends to be a working tool, both descriptive aspect of functions and equipment elements and also performance aspects.

We hope that the versatility, efficiency and quality of this equipment will be your best support in your working area.

## **SAFETY REGULATIONS**

### **RULES**

The equipment of treatment for crop protection *TEYME* is a safe machine. However, as any agricultural equipment, its working involves some risks. In order to make your equipment work correctly, it is essential to read the instructions of use and maintenance and to be completely sure that you totally know its working and controls.

Before starting any operation with the unit, ensure that you are well acquainted with the local, national and community (if appropriate) regulations related to the handling, storage, application, cleaning and disposal of the chemical products about to be used.

**READ CAREFULLY THE INSTRUCTIONS ON THE PRODUCT LABEL RELATING TO THE DEGREE OF TOXICITY, DETOXIFICATION AND NEUTRALISATION OF THE PRODUCT.**

If in doubt, consult the agricultural services in your area; they will inform you about the prevailing regulations.

**REMEMBER: ASKING IS BETTER THAN NOT KNOWING. IGNORANCE OF THE LAW IS NO EXCUSE FOR BREAKING IT.**

## **OPERATOR SAFETY**

For any of the operations mentioned in this manual, appropriate protective gear should be used to avoid contact with the product; this includes:

**Appropriate clothing** (of plastic or rubber)

**Boots**

**Helmet with air filters**

**Gloves**

Once spraying has finished all these items of clothing should be washed with detergent and neutralising agent and kept in a well-ventilated and safe place.

**DO NOT SMOKE, EAT OR DRINK DURING FILLING, SPRAYING AND CLEANING OPERATIONS OF THE UNIT.**

**DO NOT HANDLE CHEMICAL PRODUCTS IF UNDERGOING MEDICAL TREATMENT.**

**DO NOT SPRAY UNDER ADVERSE WEATHER CONDITIONS.**

**REMEMBER: YOUR PERSONAL SAFETY COMES FIRST.**

## **SAFETY WITH THE EQUIPMENT**

Check your equipment each time you use it. Check the most essential parts which are mentioned in Maintenance section. Replace the damaged parts/components and do not wait until they broke, as it might cause a bigger, irreparable damage according to the part. Do not repair any part, if you are not totally familiarised with the equipment and the components. Do not install non-original parts, as they could damage the mechanics of the equipment. The best solution is to directly go to the **authorised** After-Sale Service. **NEVER repair the equipment when working !!**

### **SAFETY AGAINST TORSION**

The torsion accidents are caused by the transmission. Although they are protected, you should check that nobody is near when starting the equipment. You should not allow children to be in contact with the equipment when working or starting.

### **STORAGE SAFETY**

Once the equipment has done its task and it has to be stored for an indefinite period of time, the equipment has to be totally cleaned and the Maintenance precautions have to be followed, so that you will keep the same machine you have purchased with all the advantages.

**OPERATOR'S MANUAL**  
**STARTING UP THE EQUIPMENT**

**ATTACHMENT OF THE UNIT AND STARTING UP**

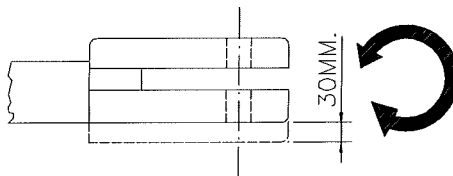
The standard unit is equipped with a forked coupling to attach to the fastening point of the hydraulic arms.

**It is essential that the connection is made at this point and that the hydraulic arms are fastened down, impeding lateral movements.**

To connect use the following procedure:

- 1) Level the unit using its stand and bring it near the tractor.

**CARRY OUT THIS AND ALL THE FOLLOWING OPERATIONS WITH THE TRACTOR OFF AND THE IGNITION KEY REMOVED.**



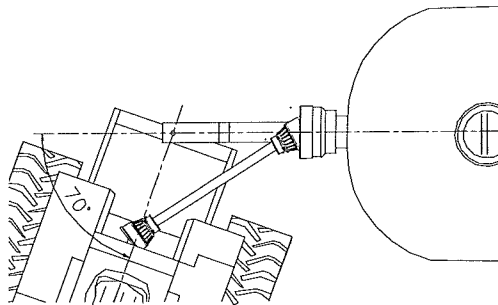
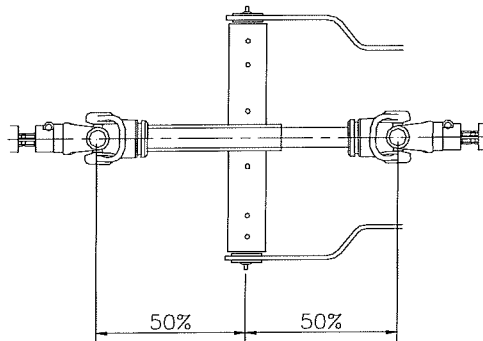
The height of the forked attachment point can be adjusted by 30 mm; use this option to perfectly align the **PTO** of the unit with that of the tractor.

- 2) Join the forked attachment of the unit to the centre of the fastening point using the appropriate tools.

**DO NOT USE YOUR FINGERS OR OTHER PARTS OF THE BODY TO CARRY OUT THIS OPERATION**

- 3) After connecting the unit to the tractor lift and place the stand in its out-of-use position.

- 4) The length of the drawbar can vary from 250 mm and should be adjusted so that the attachment point lies midway between the two PTO connections of the tractor and the unit; to do this loosen bolt 1 (picture A page 25) and take out the pin 2, situate the drawbar at the desired point and reinsert the pin 2 and replace the bolt 1.



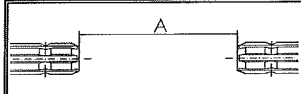
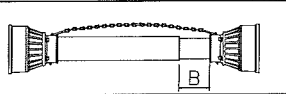
**UNDER SUCH CONDITIONS IT'S POSSIBLE TO WORK WITH A MAXIMUM TURN OF 70° BETWEEN TRACTOR AND UNIT WITHOUT DISCONNECTING THE TRANSMISSION.**

**If it is necessary to exceed this angle:**

- a) Disconnect the transmission of the turning mechanism.
- b) Mount a transmission with a **DOUBLE CV JOINT** (maximum turning angle 160°)

5) Adjust the length of the transmission, shortening it if necessary. To do this cut the two pipes along with the protection guards according to the following instructions:

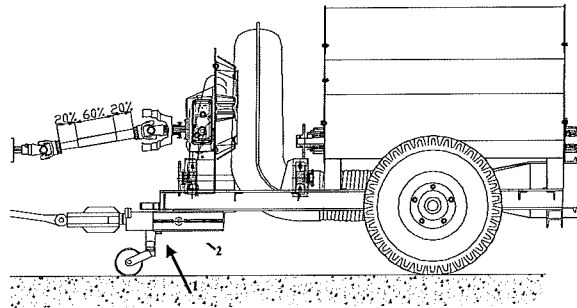
A. Adjust the gap between the ends of the transmission according to the following table:

	
600	40 (*)
800	60 (*)
1000	80 (*)
1200	100 (**)
1400	140 (**)

(\*) increase by 10 mm when the unit has a CV joint

(\*\*) increase by 20 mm when the unit has a CV joint

**DO NOT CARRY OUT THIS OPERATION WITH A GREASED TRANSMISSION**



B. Ensure that the transmission pipes are by connected 2/3 of their useful length with the unit and the tractor level aligned.

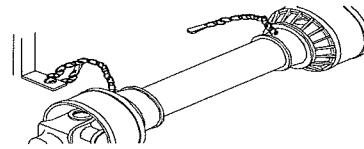
Picture A

These figures are calculated for working conditions of a maximum of 70° turn on slopes of a maximum of 30%. If these limits are exceeded, carry out practical on-the-spot checks.

**REMEMBER that the joints of the tractor and the unit as well as the transmission must be completely protected; in the case of accident ONLY THE USER CAN BE HELD RESPONSIBLE if the unit does not possess the standard protection guards officially approved and in perfect working order**



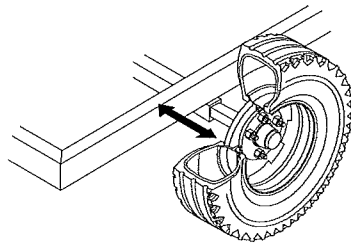
- 6) After adjusting the length of the transmission and connecting both ends fit the safety chains on rigid supports to prevent rotation of the protection guards.



- 7) Check the oil level in the gearbox ensuring that this one is disconnected.
- 8) Check the inflation level of the tyres according to the following table of measures and pressure:

TYRE	PRESSURE	
	BAR	P.S.I.
195/60 R15"	2,5	36
225/70 R15"	2,5	36
10,0/80-12" 8L.	3,1	45

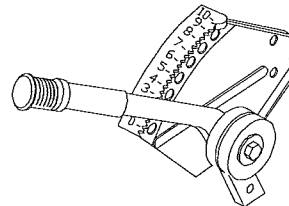
**For further instructions see chapter in page 34**



If the axle can be stretched, this allows to regulate the width according to the needs. Always take care with the catchers settled in the half-axle to avoid that they are not caught hold enough and might strain the axle.

#### 9) LOADING

Before loading and starting up check that the regulator level is in "0" closed (see picture A). Carry out the loading operation with the PTO disconnected, in order to prevent possible damages in the vibrator. Do not manipulate or introduce objects inside the hopper.



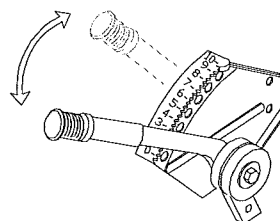
PICTURE A

#### 10) STARTING UP

Start up the PTO with the engine at low rotation level and do not sharply accelerate.

#### 11) ADJUSTMENT AND DOSAGE

After reaching the required rotation level (450-540 rpm PTO), choose the required dosage according to position of the regulator lever, depending on the type of treatment to be applied (see picture B)



PICTURE B

#### 12) STOP

Put the regulator lever in the "0" position (closed), decrease gradually the engine rotation level and disconnect the PTO. Do not come near the machine nor work on it until it has completely stopped.

#### 13) RECOMMENDATION

We recommend to clean the machine after each working day and to check it completely after every season.

**ALWAYS USE APPROPRIATE PROTECTIVE GEAR AND FOLLOW AT ANY TIME THE CURRENT LEGISLATION ABOUT MINIMUM ESPACE AND NARROW PLACES.**

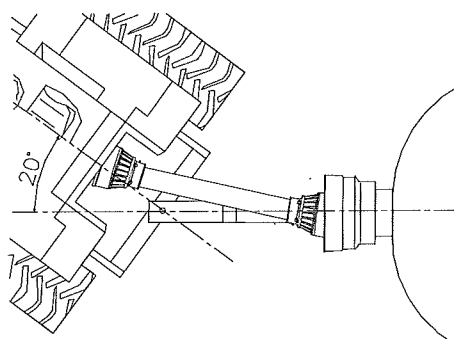
**IF THE OPERATOR WANTS TO TRANSPORT THE PRODUCT INSIDE THE HOPPER, IT IS COMPULSORY TO PLACE THE GEARBOX LEVER IN NEUTRAL POSITION AND NEVER CONNECT THE PTO TO ACTIVATE THE MIXING SYSTEM.**

**WARNING!**

**DO NOT INTRODUCE OBJECTS INSIDE THE HOPPER, WHEN THE MACHINE IS RUNNING**

### **SPECIAL UNITS**

When the requirement of the tractor makes it necessary to connect the unit to the lower linkage point of the tractor, then the use of a transmission with a CV joint mounted on the tractor side is **OBLIGATORY**.



Otherwise it is not possible to exceed a turning angle of 20° **WITHOUT DISCONNECTING THE PTO**

To connect these units follow the instructions in pages 23, 24, 25.

### **OPTIONAL EQUIPMENT (REVOLVING BALL-AND-SOCKET)**

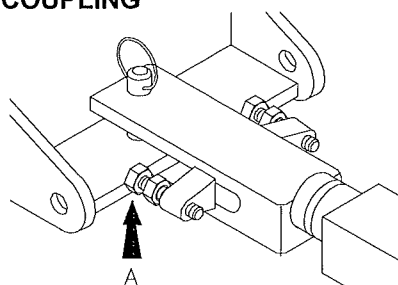
**The turning point of the drawbar must be perpendicular to the centre of the rear joint of the transmission.**

**IT IS ABSOLUTELY NECESSARY TO USE A TRANSMISSION WITH A CV JOINT ON THE UNIT SIDE.**

Follow the instructions in chapter 1.2 concerning these units.

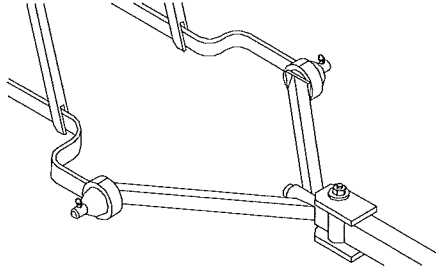
### **REVOLVING BALL-AND-SOCKET TO COUPLING**

The connection must be made at the tractor's lower linkage point; when fitted secure the drawbar to it using the bolts (A) until it is securely fastened.



**THE DRAWBAR AND THE TRACTOR LINKAGE MUST BE COMPLETELY PERPENDICULAR.**

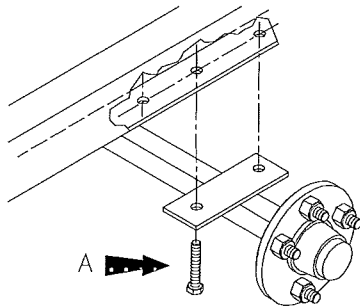
### REVOLVING BALL-AND-SOCKET TO HYDRAULIC ARMS



The unit is connected directly to the sockets of the hydraulic arms of the tractor.

### TRANSPORT AXLE

All units are equipped with two axle-mounting positions. This option is to be used to transfer more or less weight onto the linkage point and/or modify the turning circle of the unit.



**Forward position:** less weight on the linkage point / smaller turning circle.

**Rear position:** more weight on the linkage point / larger turning circle

To change the axle's position it is sufficient to unscrew the bolts (A) and move the fixing plate to the opposite holes and then screw on the bolts once more (A).

### SERVICE BRAKES

If the unit is equipped with service brakes, the two ends of the hydraulic pipes should be connected to the **BRAKE OUTLETS** of the tractor using plugs standardised for this purpose (consult your tractor's instructions manual).

**ON NO ACCOUNT MUST THE SERVICE BRAKES BE CONNECTED TO THE TRACTOR PUMP OUTLETS**

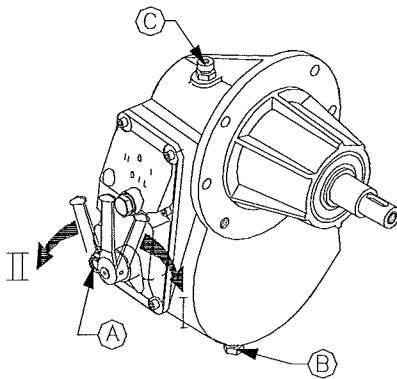
## ROADWORTHINESS

All units are approved for circulation on any public highway. For this one must observe the prevailing regulations and be equipped with the lights kit, parking brake, license plates and obligatory reflecting triangles.

## GEARBOX CENTRIFUGAL UNIT

Equipped with one speed and disconnecting device.

**IMPORTANT: THE PTO MUST BE DISCONNECTED BEFORE SELECTING ANY SPEED.**



**Check the oil level using the viewer A; the first oil change should be carried out after 125 hours and every 225 hours thereafter.**

For this purpose use 1.7 litre of **SAE 90** oil, draining the oil using plug B and replacing it using plug C.

**NOTE: DO NOT SPILL USED OIL IN THE ENVIRONMENT; COLLECT IT IN A RECIPIENT AND KEEP IT IN AN APPROPRIATE PLACE UNTIL SPECIALISED UNITS CARRY IT FOR ITS REPROCESSING.**

**VERY IMPORTANT**

**IN THE UNITS WITH 3-SHOE CENTRIFUGAL CLUTCH, MAINTENANCE FREE, DO NOT HAVE THE PTO OF THE TRACTOR BETWEEN 330/380 RPM WITH THE FAN CONNECTED, AS THIS WILL MAKE THE CLUTCH TO SLIP AND, AT THE SAME TIME, IT WILL SPEED DETERIORATION.**

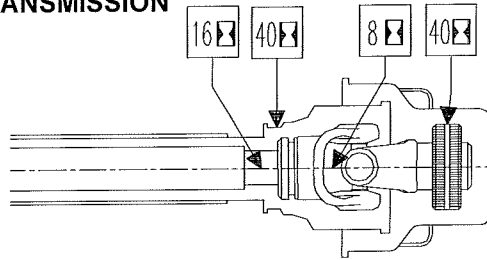
**CLEAN PERIODICALLY THE AIR TUNNEL FROM ANY KIND OF OBJECTS WHICH MAY CAUSE SOME BREAKS.**

**THE FAN IS PROTECTED WITH A GRATE IN THE AIR INLET AS WELL AS IN THE AIR OUTLET. DO NOT TOUCH THE FAN WHEN CONNECTED AND DO NOT TRY TO PUT THE HANDS, FINGERS AND/OR STICKS INTENDING TO CLEAN THE AREA FROM HERBS, LEAVES, ETC**

**MAINTENANCE**

**LUBRICATION**

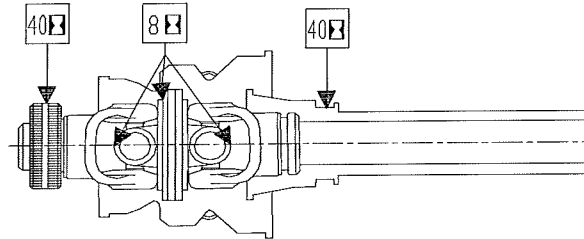
**TRANSMISSION**



Grease the transmission joints every **8 working hours**; the turning points of the protection guard and the fixing point of the transmission should be greased every **40 hours**.

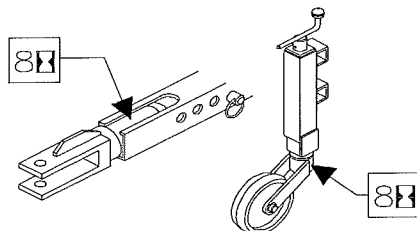
For a better sliding action it is necessary to grease the transmission pipes every **16 hours**.

In transmission with CV joints there are 5 greasing points.

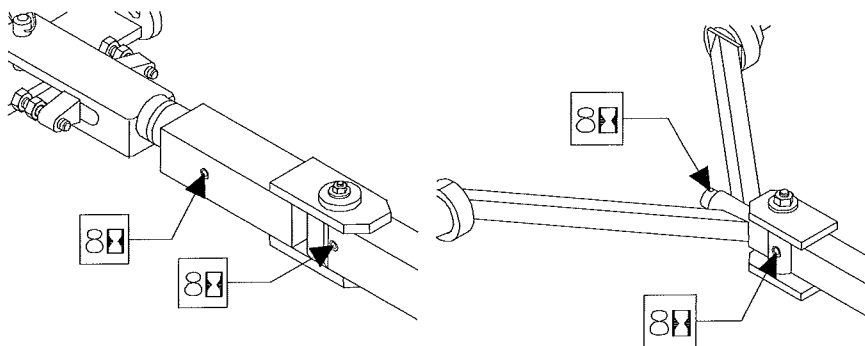


**For further information consult the transmission manual**

**COUPLING/DRAWBAR**



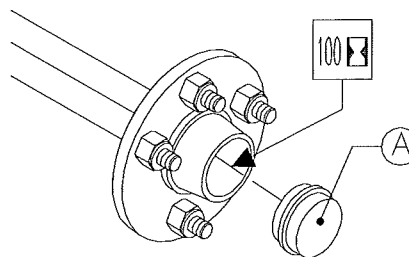
Every 8 working hours grease the grease nipples of the attachment point and the joints of the optional turnable drawbars, as well as the top part of the foot stand.



**GEARBOX**

**TRANSPORT AXLE**

Grease the transport axles with thick grease every 100 hours. To do this, take off plug A and fill the cavity with grease and then replace the protective plug.



**UNFORESEEN STOPPAGES**

**NOTE: DO NOT FILL A UNIT WITH A CHEMICAL PRODUCT IF NOT SURE THAT YOU WILL BE ABLE TO APPLY ALL OF IT**

**WHILST THE UNIT REMAINS OUT OF USE PREVENT ACCESS OF PEOPLE OR ANIMALS TO IT.**



## **TYRES**

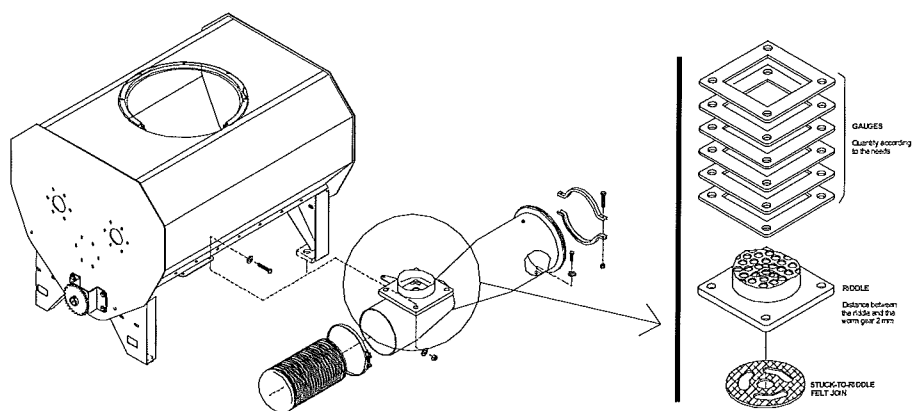
The trailed dusters are equipped with the tyres having the measures indicated in the table of page 25.

The following maintenance rules should be respected:

- Check the pressure of the tyres before starting up and do it frequently
- Check the tightness of the screws which hold the headlocks
- Check the conditions of the tyres in order to detect any possible fissures or deformities, which might produce the puncture or blow-out with the consequent danger
- When finishing the work, it would be very important to clean the wheels and axle with pressure, to avoid the mud accumulation in both places

## **VENTURI DOSER**

For the good working of the unit, if the output riddle of the product has to be disconnected because of something unexpected, it is very important to check when assembling the distance between the worm gear and the plate of the riddle. This distance will be of 2 mm, assembling in every case the gauges that the machines originally include.



## CLEANING

**Before proceeding with any cleaning operation, whether the unit, container or residue disposal, make sure that you are perfectly familiar with the local regulations on this matter. If in any doubt consult your local agricultural services.**

**USE ADEQUATE PERSONAL PROTECTIVE GEAR  
(see page 21 for further information)**

## *EMPTYING AND DISPOSAL OF RESIDUES*

The remains after cleaning containers and the unit, as well as the solid residues that the tank, the filters and the circuit may contain must be emptied in an area destined for such a use.

**THE EMPTYING SITE MUST BE AN AREA FREE OF CROPS AND IMPERMEABLE TO AVOID SEEPAGE OF LIQUIDS INTO WELLS, POOLS, PONDS, WATERCOURSES AND PUBLIC DRAINS.**

The solid residues will be disposed of in the same area by burying them at a reasonable depth to avoid easy discovery by people or animals.

ENSURE THAT LOCAL REGULATIONS ALLOW THIS AREA TO BE USED AS AN EMPTYING SITE

## *DISPOSAL OF CONTAINERS*

Containers which have held chemical products cannot be deposited alongside the other treatment residues.

Once rinsed and cleaned correctly they should be taken to places destined for the selective collection of residues or be stored in a well-ventilated and safe place until collected by companies specialising in the recycling of harmful residues.

If choosing storage and later collection by specialist companies, ensure that the place chosen for provisional storage is sufficiently announced and inaccessible to people and/or animals.

**UNDER NO CIRCUMSTANCES ARE THE CONTAINERS TO BE DESTROYED BY BURNING EITHER IN THE OPEN AIR OR IN STOVES AND/OR BOILERS.**

## DOSAGE TABLE



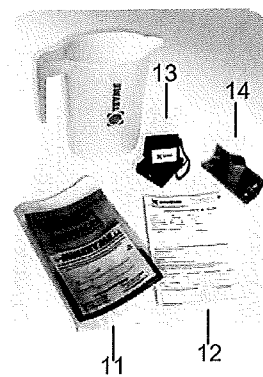
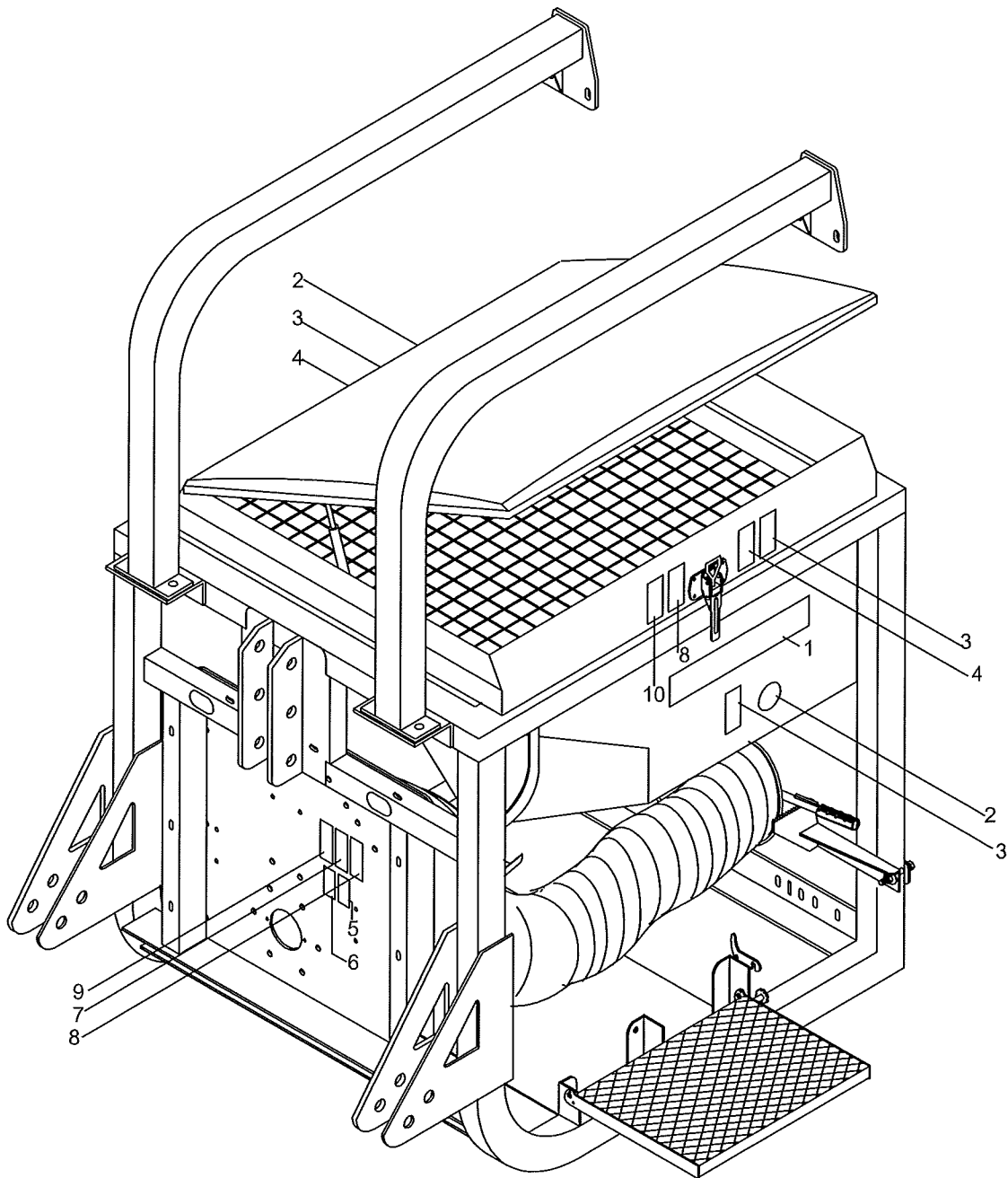
ORIENTATIVE TABLES FOR THE APPLICATION OF SULPHUR

DOSAGE TABLE (Kg/min)					
2 flat spouts kit					
rpm PTO	Position dosing lever	Dosage (kg/min)	rpm PTO	Position dosing lever	Dosage (kg/min)
450	1	2,55	540	1	4,27
	1,5	3,47		1,5	5,29
	2	4,40		2	6,32
	2,5	4,76		2,5	6,77
	3	5,12		3	7,23
	3,5	5,49		3,5	7,70
	4	5,85		4	8,16
	4,5	6,21		4,5	8,62
	5	6,56		5	9,07
	5,5	6,83		5,5	9,40
	6	7,09		6	9,74
	6,5	7,35		6,5	10,08
	7	7,62		7	10,42
	7,5	8,00		7,5	10,88
	8	8,65		8	11,60
	8,5	9,29		8,5	12,32
9	9,94	9	13,05		
9,5	10,54	9,5	13,72		
10	11,03	10	14,28		

LOWER SIEVE Ø6 mm

Dosage ground sulphur P-100/100 98,5% pure, 93% fine, sieve 0,16 mm mesh

Dosage values can vary owing to sulphur of different characteristics, temperature and environment humidity



Pol. Ind. SAU, 3, Calles A-C - 25131 TORRESERONA (Lleida) - SPAIN  
Telf. 973 750 033 - Fax. 973 751 581  
www.multeyme.com - e-mail: multeyme@multeyme.com

## EQUIPOS SUSPENDIDOS

**DTSS 550 AIRDUST**

127 001 2026

17-07-12 D1200065

Pos.	Referencia	Articulo	Cantidad
0	* 2400170047	MONTAJE DTSS AIRDUST 550	1
1	* 1011000037	DECO.AIRDUST DTSS 550 ADH.PLOT.AZUL RAL 5012	2
2	1010090002	ADHESIVO CE	2
3	1010050008	ADHESIVO PELIGRO TOMA FUERZA	3
4	1010050009	ADHESIVO PELIGRO VENTILADOR	2
5	1010050103	TRANSMISION GIR.MAX.- PANEL - 100x60	1
6	1010050102	TRANSMISION ENGRASE - PANEL - 100x60	1
7	1010050017	ADHESIVO CONSIDERACIONES GENERALES	1
8	1010050014	ADHESIVO MANUAL INSTRUCCIONES	2
9	1010050018	ADHESIVO LIMITADOR PAR	1
10	1010050011	ADHESIVO PELIGRO INHALACION	1
11	* 1018000020	MANUAL INSTRUCCIONES DTSS AIRDUST- E/GB/F/IT-	1
12	0049990041	FLEXOMETRO 3M - SERIGRAFIADO C/MARCA TEYME	1
13	1018000010	IMPRESO DE GARANTIA MAQUINAS - TEYME	1
14	* 2404000024	CONJ. SOPORTE MANDO TRACTOR	1

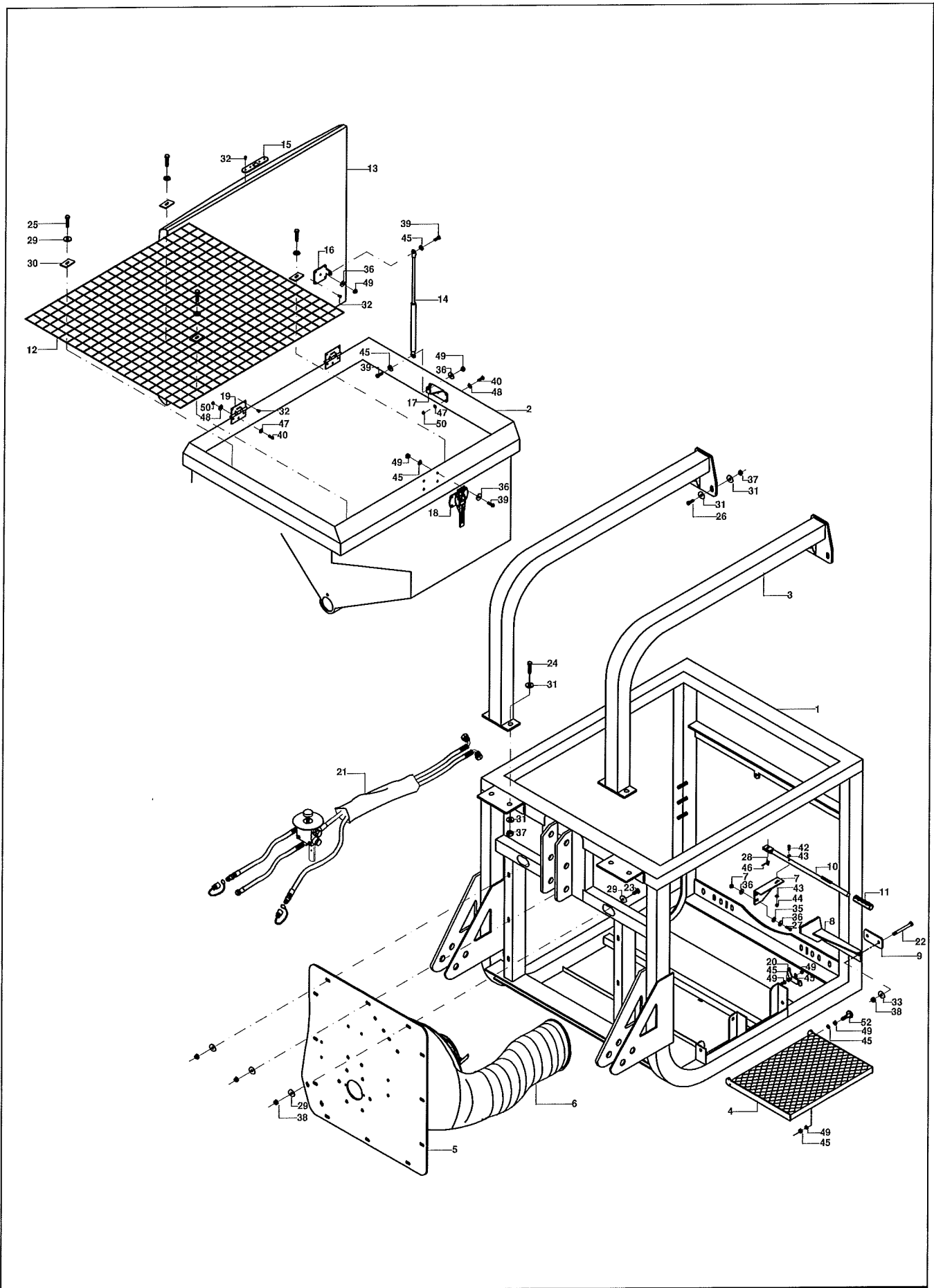
1270012026 ESPOLVOREADOR DTSS 550 AIRDUST C/DESCONECT 201



jueves, 19 de julio de 2012

Despiece

Página 1 de 1



Pol. Ind. SAU, 3, Calles A-C - 25131 TORRESERONA (Lleida) - SPAIN  
 Telf. 973 750 033 - Fax. 973 751 581  
 www.multeyme.com - e-mail: multeyme@multeyme.com

EQUIPOS SUSPENDIDOS

240 017 0047

ENSAMBLAJE DTSS AIRDUST

17-07-12 D1200065

Pos.	Referencia	Articulo	Cantidad
1	* 2400170044	CHASIS DTSS AIRDUST 550 PINT	1
2	* 2400171045	CJTO.TOLVA 550 DTSS AIRDUST	1
3	* 2400170031	CHASIS DTSS AIRDUST. TIRANTE KITS. PINT.	2
4	* 2400171043	CJTO. ESCALON DTSS - 550 PINT.	1
5	* 1230060007	GRUPO BTA-500/1V DTSS	1
6	1050010312	TUBO ø300 x 10000 TRANSP. Y BANDA METALICA	500 1
7	* 2000500320	SOPORTE PALANCA DESCONECTADOR DTSS ZN	1
8	* 2400021021	CJTO.SOPORTE REGULADOR PALANCA DESCONNECT	1
9	* 2000600941	PLETINA FIJACION SOPORTE PALANCA DESC. DTSS	1
10	* 2400050056	PALANCA DESCONECTADOR . ZN	1
11	2331000002	POMO PALANCA REGULADORA	1
12	3020010504	MALLAZO GALV. ELECTROSOLDADA 50x50xø4 [2,6x1	500 1
13	* 1100030551	TAPA TOLVA ESPOLV. 550 Lts AZUL RAL-5012	1
14	1000911200	CILINDRO GAS LONG. 500 - CARRERA 200 - 130 N A4A	2
15	* 2400171049	CJTO. SOPORTE ENGANCHE CIERRE TOLVA ZN	1
16	* 2000400485	SOPORTE CILINDRO PENUMATICO TAPA ZN	2
17	* 2000400486	SOPORTE CILINDRO PENUMATICO TOLVA ZN	2
18	* 2400171047	CJTO. SOPORTE MANETA CIERRE TOLVA ZN	1
19	1001040007	BISAGRA AMIG INOX REF 2010 3.5X3.5	2
20	* 2000400401	PESTILLO ESCALON ZN	1
21	* 2400190081	SCJTO. MANG. HIDR. C/MANDO DTSA 600 NEW 2005	1
22	0500201011	TLLO. DIN-931 8.8 Zn M10x110	2
23	0500101030	TLLO. DIN-933 8.8 Zn M10x30	6
24	0500101235	TLLO. DIN-933 8.8 Zn M12x35	1
25	0500201001	TLLO. DIN-931 8.8 Zn M10x100	4
26	0500101240	TLLO. DIN-933 8.8 Zn M12x40	4
27	0500100825	TLLO. DIN-933 8.8 Zn M8x25	2
28	2250140001	PIVOTE PALANCA DESCONECTADOR	1
29	0550150010	ARANDELA D-9021 Zn Ø10	28
30	2000600772	FIJADOR REJA PROTECCION DTSS-400	4
31	0550150012	ARANDELA D-9021 Zn Ø12	16
32	0990010424	REMACHE FLOR D.4,9x21	28
33	0550100010	ARANDELA PLANA D-125 Zn Ø10	2
35	0550200008	ARANDELA GROWER D-127 Zn D.8	2
36	0550150008	ARANDELA D-9021 Zn Ø8	12
37	0521101200	TUERCA D-985 AUTOBL. Zn M12	8
38	0521101000	TUERCA D-985 AUTOBL. Zn M10	14
39	0500100820	TLLO. DIN-933 8.8 Zn M8x20	8
40	0503100525	TLLO. AVELLANDO DIN-963 5.6 Zn M5x25	16
42	0500100630	TLLO. DIN-933 8.8 Zn M6x30	1
43	0550100006	ARANDELA PLANA D-125 Zn Ø6	2
44	0521100600	TUERCA D-985 AUTOBL. Zn M6	1
45	0550100008	ARANDELA PLANA D-125 Zn Ø8	12
46	0650100440	PASADOR ALETAS 4x40 DIN-94	1
47	0550100005	ARANDELA PLANA D-125 Zn D.5	16
48	0550150005	ARANDELA D-9021 Zn D.5	16
49	0521100800	TUERCA D-985 AUTOBL. Zn M8	12

**2400170047 MONTAJE DTSS AIRDUST 550**



lunes, 30 de julio de 2012

Despiece

Página 1 de 2

Pos.	Referencia	Articulo	Cantidad
50	0521100500	TUERCA D-985 AUTOBL.Zn M5	16
51	* 2000400487	TIRANTE PROTECTOR DTSS 550 - ZN-	1

2400170047

MONTAJE DTSS AIRDUST 550



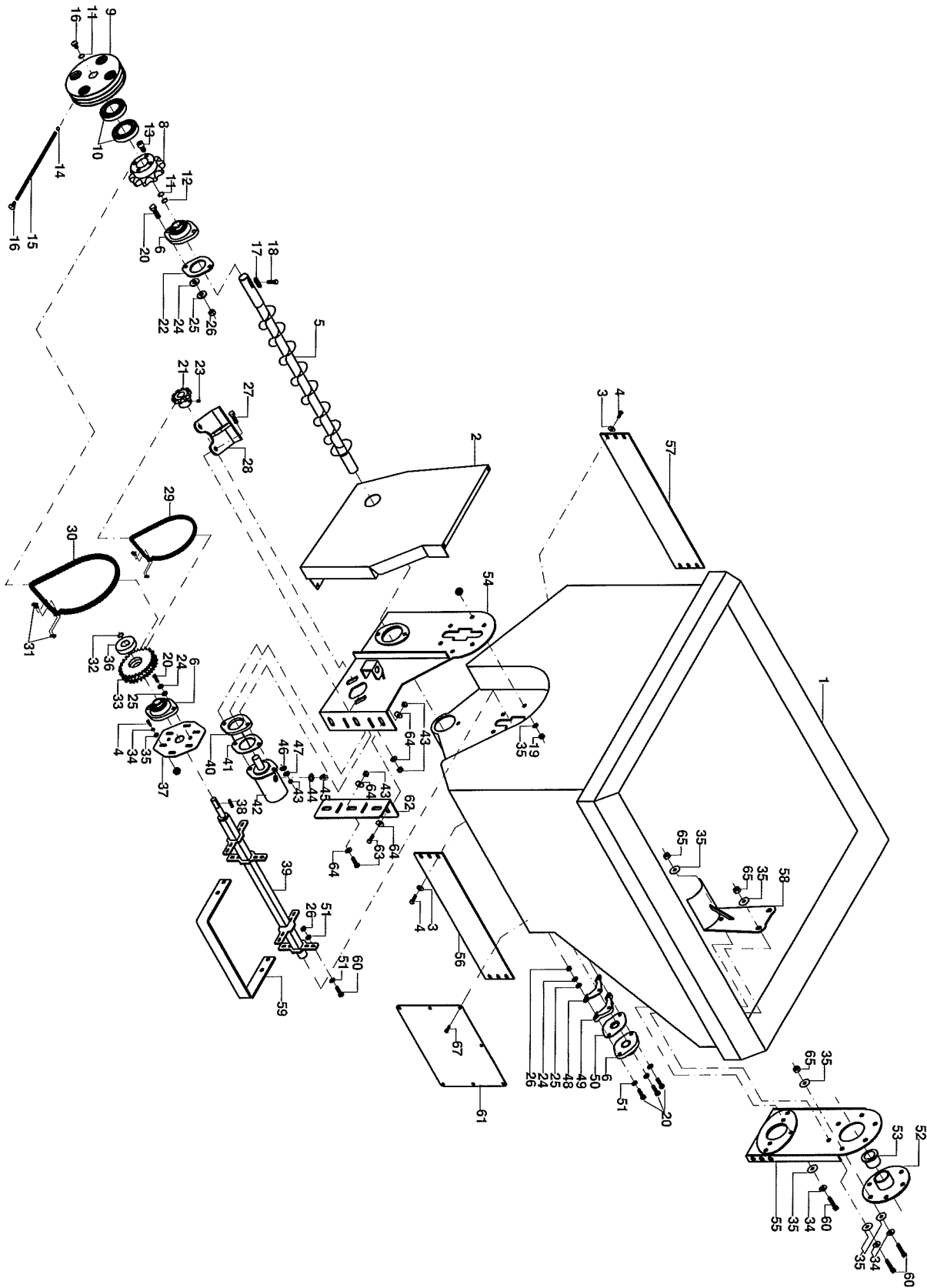
**TEYME**  
Tecnología Agrícola, s.l.

lunes, 30 de julio de 2012

Despiece

Página 2 de 2





Pol. Ind. SAU, 3, Calles A-C - 25131 TORRESERONA (Lleida) - SPAIN  
 Telf. 973 750 033 - Fax. 973 751 581  
 www.multeyme.com - e-mail: multeyme@multeyme.com

# DTSS AIRDUST

240 017 1045

## CONJUNTO TOLVA DTSS AIRDUST 550

17-07-12 D1200066

Pos.	Referencia	Articulo	Cantidad
0	2000100014	DESARROLLO CHAPA INF.DEFLECTOR INT.ENVOLV.	1
1	1100030550	TOLVA ESPOLVOLREADOR 550 Lts GRIS RAL-7038	1
2	* 2400171057	CJTO. CHAPA PROTECTOR CADENAS DTSS PINT	1
3	0550120008	ARANDELA D-125 INOX D.8	32
4	0500900825	TORNILLO DIN-933 INOX M8x25	18
5	* 2400171029	EJE SIN-FIN ALIMENTACION DTSS-550 ZN.	1
6	0700600001	SOPORTE OVAL C/EXCENTRICA "TCJT25" - INA	3
7	0500100860	TLLO. DIN-933 8.8 Zn M8x60	1
8	* 2400170051	PIÑON SIMPLEX 3/4" Z20 DESCONECTADOR DTSS -ZN	1
9	* 2400170049	CUERPO DESCONECTADOR DTSS -Zn-	1
10	* 0700602005	ROD.RIG.BOLAS 6005-2RSR D-625	2
11	0560020047	ANILLO SEG. D-472 I 45x1,75	3
12	* 0560010025	ANILLO SEGURIDAD D.471 25x1,3	1
13	* 0501101221	TLLO. DIN-912 8.8 Zn M12x20 ESPECIAL DESCONECTA	4
14	S00907010108	BOLA ACERO D.8 MM	1
15	0200020045	MUELLE CILINDRICO COMP. Ø8xØ1x1000 ( COMPRA )	30 1
16	0750020010	ENGRASADOR PLANO MT-150 M10x100	2
17	* 0270020808	CHAVETA DIN-6885 A 8x7x35 ESPECIAL DESCONECTA	1
18	0503100415	TORNILLO AVELL.DIN-963 Zn M4x15	1
19	0521100800	TUERCA D-985 AUTOBL. Zn M8	6
20	0500901035	TLLO. DIN-933 INOX.M10x35	9
21	* 2400190075	PIÑON MOTOR DTSS 550 ZN.	1
22	* 2000400287	SUPLEMENTO RODAMIENTO ZN.	1
23	0506010810	PRISIONERO ALLEN D-913 M8x10	1
24	0550120010	ARANDELA D-125 INOX D.10	20
25	0550200010	ARANDELA GROWER D-127 Zn D.10	6
26	0521101000	TUERCA D-985 AUTOBL. Zn M10	29
27	0500901260	TLLO. DIN-933 INOX M12x60	2
28	* 2400190001	CJTO.TENSOR CADENA PRINCIPAL ZN.	1
29	0263000002	CADENA RODILLOS SIMPLE 3/4	1.111 1
30	0263000002	CADENA RODILLOS SIMPLE 3/4	877 1
31	0263010002	ENGANCHE SIMPLE 3/4	2
32	0560010022	ANILLO SEGURIDAD D.471 22x1,2	1
33	* 2400170053	CONJUNTO PIÑON 3/4" Z27 DESCONECTAOR. DTSS -Z	1
34	0550300008	ARAND.ABANICO D-6798-A Ø8,2 Zn	36
35	0550160008	ARANDELA D-9021 INOX Ø8	12
36	* 2400170055	ARANDELA AJUSTE CONJUNTO PIÑON. DTSS -Zn-	1
37	* 2400190022	CJTO.POSTERIOR TENSOR INTERMEDIO ZN	1
38	0270021110	CHAVETA DIN-6885 A 8x7x45	1
39	* 2400171030	EJE MEZCLADOR PORTAPALAS ZN. DTSS	1
40	* 2400190094	GALGA MOTOR HIDRAULICO 6mm DTSA	1
41	* 2400190003	GALGA MOTOR HIDRAULICO 3mm DTSA	1
42	0240010003	MOTOR "OMR" 250c.c. Ø25 c/CHAVETERO	1
43	0521101200	TUERCA D-985 AUTOBL. Zn M12	10
44	0790090012	JUNTA METAL BUMA 1/2"	2
45	0050060008	UNION HIDRAUL. M-M 1/2"	2
46	0550120012	ARANDELA D-125 INOX D.12	2

2400171045

CJTO.TOLVA 550 DTSS AIRDUST



**TEYME**  
Tecnología Agrícola, s.l.

lunes, 30 de julio de 2012

Despiece

Página 1 de 2

Pos.	Referencia	Articulo	Cantidad
47	0550200012	ARANDELA GROWER D-127 Zn D.12	2
48	* 2400171040	SUPLEMENTO 4 mm SALIDA AZUFRE DTSS-400 Zn	1
49	* 2400171041	SUPLEMENTO 12 mm SALIDA AZUFRE DTSS-400 Zn	1
50	* 2400171042	SOPORTE RODAMIENTO SALIDA DTSS-400 Zn.	1
51	0550150010	ARANDELA D-9021 Zn Ø10	33
52	* 2400191031	SOPORTE EJE MEZCLADOR ZN.	1
53	2330020021	CASQ. NYLON ø40x46.5x36 EJE INTERM. DTSA	1
54	* 2400171051	CJTO. REFUERZO TOLVA DELANTERO DTSS PINT	1
55	* 2400171055	CJTO. REFUERZO TOLVA TRASERO DTSS PINT	1
56	* 2000400416	TIRANTE IZQUIERDO - DTSS 550	1
57	* 2000400418	TIRANTE DERECHO - DTSS 550	1
58	* 2400170057	VISERA INTERIOR TOLVA DTSS-550 Zn	1
59	* 2100401099	AGITADOR EXTERIOR DTSA NEW ZN	1
60	0500101030	TLLO. DIN-933 8.8 Zn M10x30	16
61	* 2000200341	TAPA REGISTRO - DTSS 550	1
62	* 2400171053	CJTO. SPORTE MOTOR DTSS PINT	1
63	0500101220	TLLO. DIN-933 8.8 Zn M12x20	6
64	0550150012	ARANDELA D-9021 Zn Ø12	14
65	0521100800	TUERCA D-985 AUTOBL. Zn M8	9
66	0500100616	TLLO. DIN-933 8.8 Zn M6x16	7

2400171045

CJTO.TOLVA 550 DTSS AIRDUST

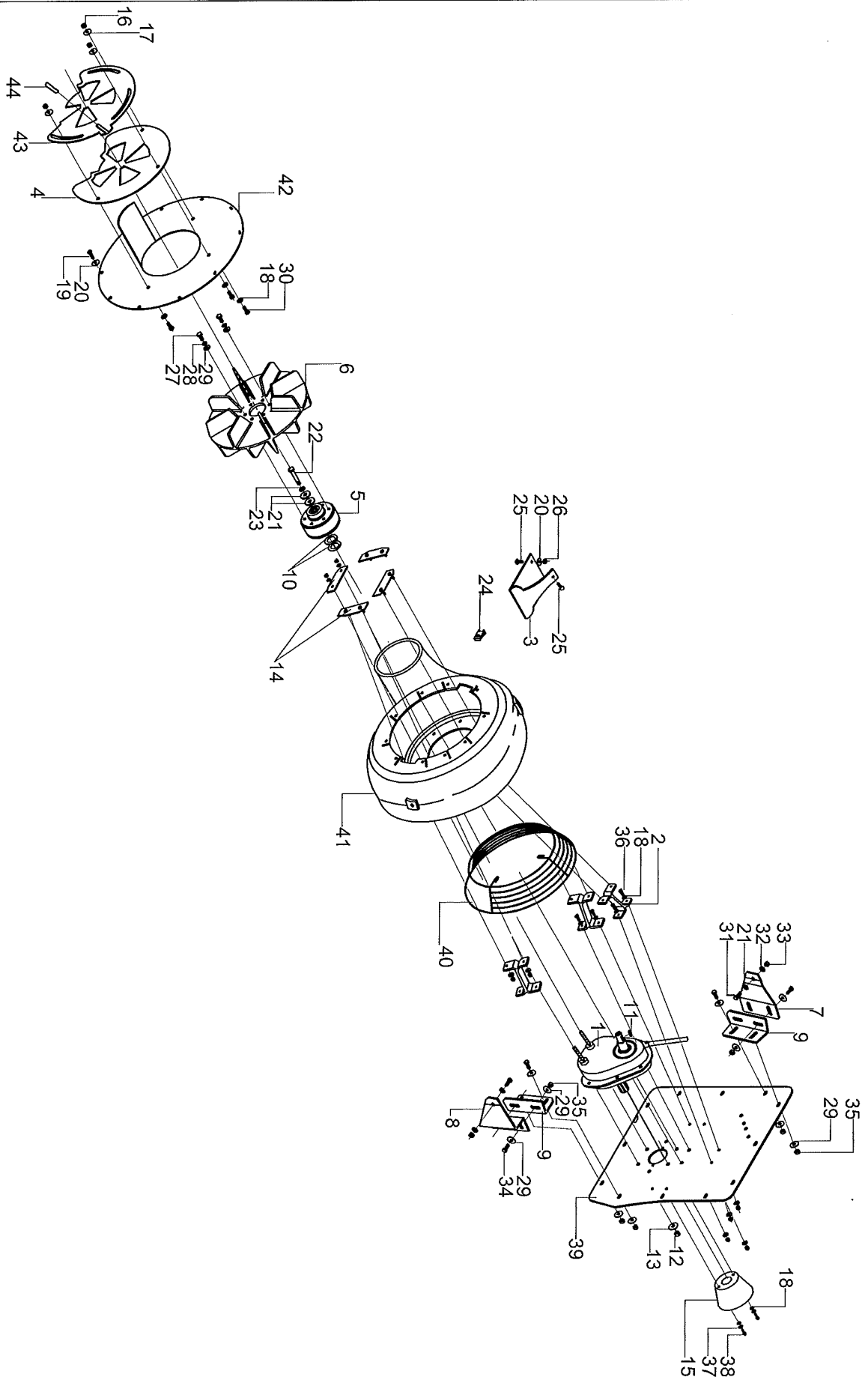


**TEYME**  
Tecnología Agrícola, s.l.

lunes, 30 de julio de 2012

Despiece

Página 2 de 2



Pol. Ind. SAU, 3, Calles A-C - 25131 TORRESERONA (Lleida) - SPAIN  
 Telf. 973 750 033 - Fax. 973 751 581  
 www.multeyme.com - e-mail: multeyme@multeyme.com

## EQUIPOS SUSPENDIDOS

**GRUPO BTA - 500/1V DTSS  
 DTSS AIRDUST**

1230060007

10-07-12 D1200067

Pos.	Referencia	Articulo	Cantidad
1	1160020106	MULTIPLICADOR ECO CANNON	1
2	1202000104	SOPORTE ENVOLVENTE ALUMINIO 2011	3
3	* 2000600800	CONJUNTO DEFLECTOR INTERIOR ENVOLVENTE DTS	1
4	2020300004	TAPA FIJA ASPIRACION AIRDUST DTSS	1
4,2	2020300005	TAPA REGULABLE ASPIRACION AIRDUST DTSS	1
4,3	2331000002	POMO PALANCA REGULADORA	1
5	1202000103	CNJTO. EMBRAGUE PEQUEÑO COMPLETO C/ZAMAK	1
6	2330040005	TURBINA DOBLE Ø 500	1
7	* 2000600259	SOP. IZQ ENVOLVENTE POLIETILENO	1
8	* 2000600262	SOP. DER. ENVOLVENTE POLIETILENO	1
9	* 2000600265	ESCUADRA FIJ. ENVOLVENTE POLIET.	2
10	2030150039	ARAND.INOX GALGA EMBRAGUE GRUP. AIRE POLIE.	2
11	0270010807	CHAVETA DIN-6885 A 8x7x30	1
12	0521101200	TUERCA D-985 AUTOBL. Zn M12	1
13	0550220012	ARAND. GROWER D-127 INOX D.12	1
14	* 2400030103	CONJ. PLETINA FIJ. ENVOLVENTE	3
15	* 1150150003	PROTECCION T.F. DTS/DTN	1
16	0521100800	TUERCA D-985 AUTOBL. Zn M8	3
17	0550160008	ARANDELA D-9021 INOX Ø8	21
18	0550120008	ARANDELA D-125 INOX D.8	11
19	0508006319	TLLO. CHAPA DIN-7981 Zn 6,3x19	10
20	0550160006	ARANDELA D-9021 INOX D.6	10
21	0550160012	ARANDELA D-9021 INOX D.12	5
22	0501001270	TORNILLO DIN-931 INOX M12x70	1
23	0550220012	ARAND. GROWER D-127 INOX D.12	4
24	0525001010	TCA. RÁPIDA UNIV. 1/4" Ø9,7x28,5 MIK-212826	1
25	0502500616	TLLO. DIN-603 INOX M6x16	2
26	0521100600	TUERCA D-985 AUTOBL.Zn M6	2
27	0500901020	TLLO. DIN-933 INOX. M10x20	6
28	0550220010	ARAND. GROWER D-127 INOX D.10	6
29	0550160010	ARANDELA D-9021 INOX D.10	6
30	0500900825	TORNILLO DIN-933 INOX M8x25	3
31	0500901235	TLLO. DIN-933 INOX M12x35	2
32	0550120012	ARANDELA D-125 INOX D.12	10
33	0521101200	TUERCA D-985 AUTOBL. Zn M12	6
34	0500901035	TLLO. DIN-933 INOX.M10x35	8
35	0521101000	TUERCA D-985 AUTOBL. Zn M10	8
36	0500900825	TORNILLO DIN-933 INOX M8x25	6
37	0550200008	ARANDELA GROWER D-127 Zn D.8	2
38	* 0501500820	TORNILLO ALLEN M8x20	2
39	* 2000600844	SOPORTE GRUPO AIRE - DTSS 550 PIN	1
40	1140010021	REJA INTERIOR D-507 INOX AISI304	1
41	* 1101008055	ENVOLVENTE P/AIRD P/Ø470-500 POLIET.GRIS 7038 M	1
42	* 2400171059	CJTO. TAPA ASPIRACION GRUPO AIRE DTSS PINT	1
99	MEC0190002	EQUILIBAR TURBINAS 470/500	1

1230060007

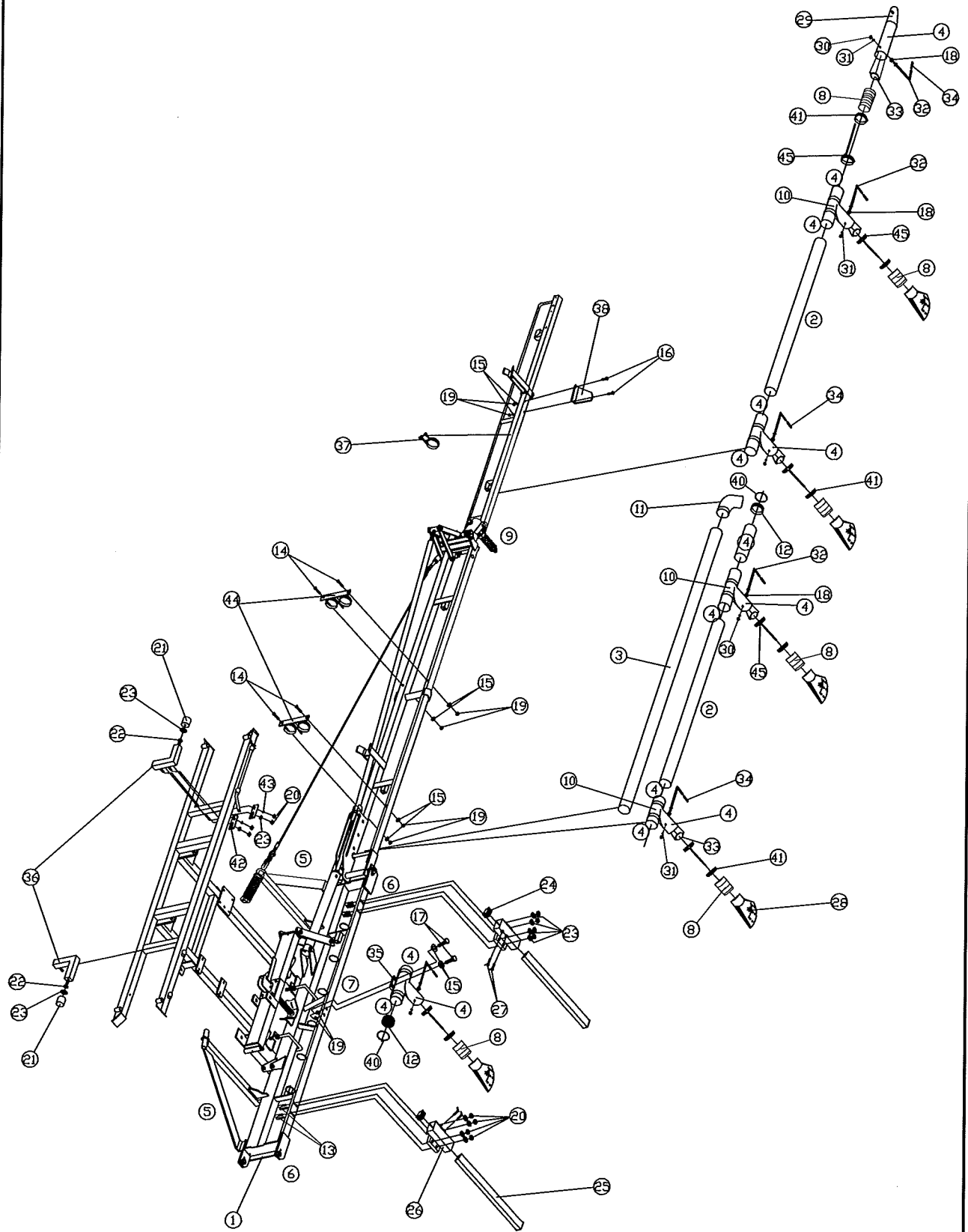
GRUPO BTA-500/1V DTSS



lunes, 30 de julio de 2012

Despiece

Página 1 de 1



Pol. Ind. SAU, 3, Calles A-C - 25131 TORRESERONA (Lleida) - SPAIN  
 Telf. 973 750 033 - Fax. 973 751 681  
 www.multeyme.com - e-mail: multeyme@multeyme.com

BARRA "DTSS" AIRDUST

1270010241

PLANO GENERAL MAQUINA

23-06-10 D100013

Pos.	Referencia	Articulo		Cantidad
1	* 2400085112	CHASIS BARRA HERBICIDA HIDRAULICA 12m. GALVANIZADO		1
2	2331000014	TUBE Ø100 PVC (4 metros)	1.370	4
3	2331000014	TUBE Ø100 PVC (4 metros)	2.300	2
4	2331000014	TUBE Ø100 PVC (4 metros)	120	21
5	1050010303	TUBO Ø100 AIRFLEX	2.400	1
6	1050010303	TUBO Ø100 AIRFLEX	1.950	2
7	1050010303	TUBO Ø100 AIRFLEX	2.200	1
8	1050010303	TUBO Ø100 AIRFLEX	140	11
9	1050010303	TUBO Ø100 AIRFLEX	1.070	2
10	2331000008	EMBRANCHEMENT T M/F100/F75		9
11	2331000012	COUDE 45° M-F/100		2
12	2330030002	TAPON GOMA Ø100		3
13	0509026113	ABARCON M-10 BARRA H.HIDRAULICA Zn.		8
14	0500200870	TLLO. DIN-931 8.8 Zn M8x70		4
15	0550100008	ARANDELA PLANA D-125 Zn Ø8		18
16	0500200860	TLLO. DIN-931 8.8 Zn M8x60		4
17	0500100840	TLLO. DIN-933 8.8 Zn M8x40		2
18	0550100008	ARANDELA PLANA D-125 Zn Ø8		11
19	0521100800	TUERCA D-985 AUTOBL. Zn M8		14
20	0521101000	TUERCA D-985 AUTOBL. Zn M10		16
21	2330030008	TOPE GOMA SERIE HS 50/50 HOMS		2
22	0550300010	ARAND. ABANICO D-6798-A Ø10,5 Zn		2
23	0550150010	ARANDELA D-9021 Zn Ø10		14
24	2331010040	CONTERA INTERIOR C. 40x40		2
25	* 2400200252	CITO.PATA APOYO BARRA HERBICIDA HIDRAU. GALVAN.		2
26	* 2400200255	CITO.GUIA SUJECION PATA APOYO GALVANIZADO.		2
27	* 2400200257	PALANCA FIJACION LARGA ZN.		4
28	2330051001	TOBERA ABANICO Ø100x60° C/Remaches		9
29	* 2330050004	TOBERA CILINDR. Ø100 MEC.		2
30	0521100600	TUERCA D-985 AUTOBL.Zn M6		9
31	0550150006	ARANDELA D-9021 Zn Ø6		9
32	* 2260060011	PALANCA ROSCADA M-6. COMPUERTA DISTRIBUIDOR 10S.		9
33	2330030005	COMPUERTA CIERRE TOBERA		9
34	2331000004	MANOPLA PALANCA COMPUERTA		9
35	* 2400170034	CONJUNTO SOPORTE T ø100 BH DTSS Zn		1
36	* 2400170036	CONJUNTO TOPE BARRA DTSS Zn.		2
37	* 2400170038	ABRAZADERAS TUBO/BARRA DTSS Zn.		2
38	* 2000600783	CHAPA TOPE PLEGADO DCHA BARRA HIDRAULICA 9 SAL Zn		1
39	2000600784	CHAPA TOPE PLEGADO IZDA BARRA HIDRAULICA 9 SAL Zn		1
40	0600010110	ABRAZADERA SIN-FIN 90-110		3
41	0600040112	ABRAZADERA SUPER 104-112		25
42	2000600515	PLETINA FIJ.RESOR.PROTEC.PUNTERA B.H.H. ZN.		4
43	0550100010	ARANDELA PLANA D-125 Zn Ø10		4
44	* 2400170041	SOPORTE 2 ABRAZADERAS DTSS Zn		4
45	* 2400170042	ABRAZADERA CON VARILLA 12x300 DTSS Zn		11

1270010241

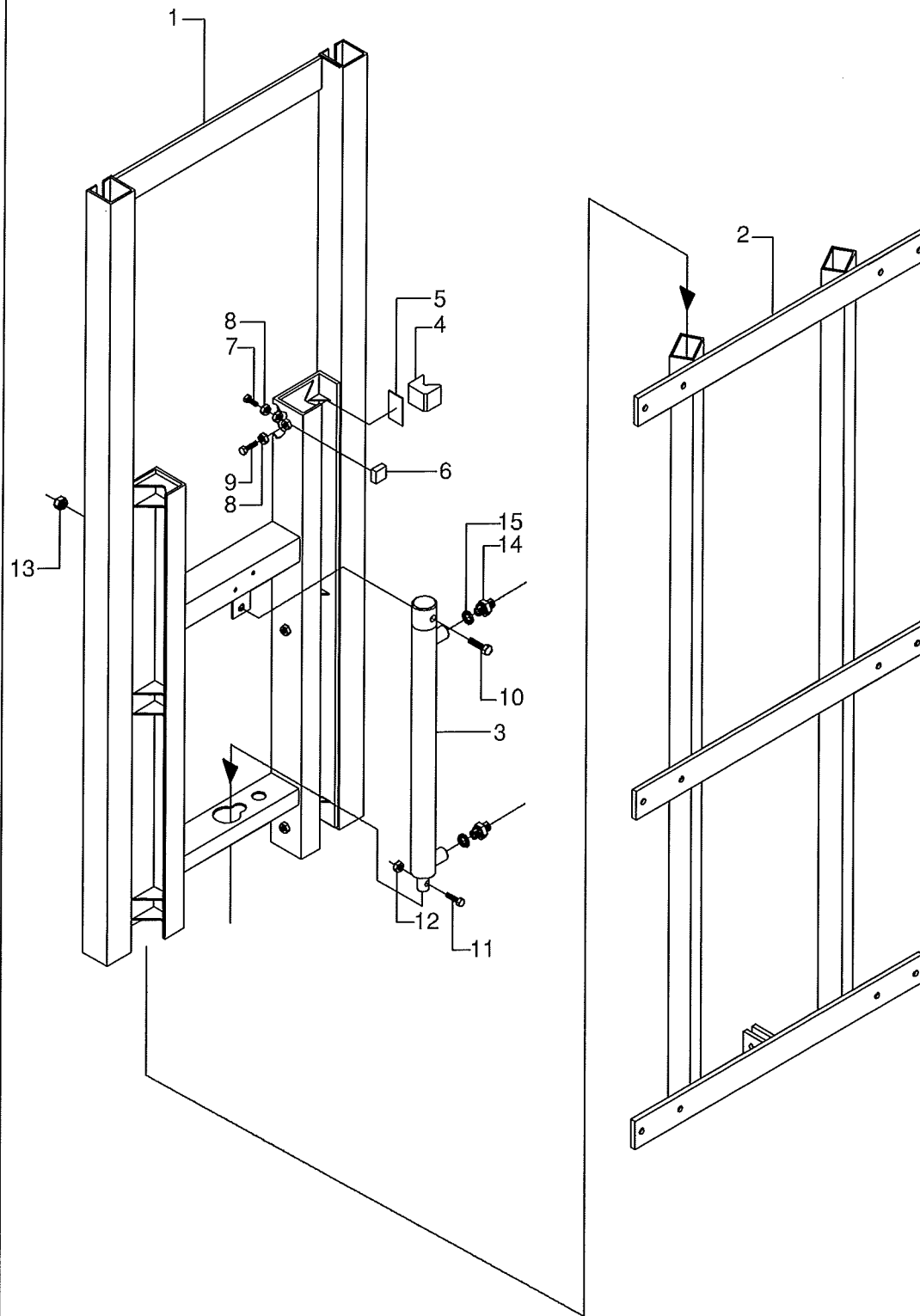
KIT BARRA HIDRAULICA 9 S. + 2 C. 12MTS.


**TEYME**  
 Tecnología Agrícola, s.l.

miércoles, 23 de junio de 2010

Despiece

Página 1 de 1



Tecnología Agrícola, s.l.  
 Pol. Ind. SAU, 3, Calles A-C - 25131 TORRESERONA (Lleida) - SPAIN  
 Telf. 973 750 033 - Fax. 973 751 581  
 www.multeyme.com - e-mail: multeyme@multeyme.com

ELEVADOR HIDRAULICO HERB.NEB.

240.014.0315 / 008.5001

SUBCONJ.MONTAJE CHASIS ELEVADOR  
 CARRERA 530 / 1000

29-11-05

D0400235



Pos.	Referencia	Articulo	Cantidad
1	* 2400088072	BASTIDOR MOVIL ELEV.HIDR.HERB/NEB CARR. 1000	1
2	* 2400088070	BASTIDOR FIJO ELEV.HIDR.HERB/NEB CARRERA 1000	1
3	* 1000899023	CIL.HIDR.25/40/1000 D.E.ELEV.BH ACAB.	1
4	2330020024	TACO ELEVACION 383 NYLON PATIN ELEV.HIDR.	6
5	2000200039	CHAPA PROTECCION TACO NYLON ELEV.HID.HERB.	6
6	* 2100300064	PLETINA ELEVACION TACO NYLON BRUTO	6
7	0500101245	TLLO. DIN-933 8.8 Zn M12x45	6
8	0520101200	TUERCA DIN-934 6 Zn M12	12
9	0500101235	TLLO. DIN-933 8.8 Zn M12x35	6
10	0500201490	TLLO. DIN-931 8.8 Zn M14X90	1
11	0500201260	TLLO. DIN-931 8.8 Zn M12x60	1
12	0521101200	TUERCA D-985 AUTOBL. Zn M12	1
13	0521101400	TUERCA D-985 AUTOBL. Zn M14	1
14	0050060001	UNION HIDRAUL. M-M 1/4" -D.O,7	2
15	0790090014	JUNTA METAL BUMA 1/4	2

2400085001

SUBCONJ. MONTAJE CHASIS ELEVADOR HID. 1000

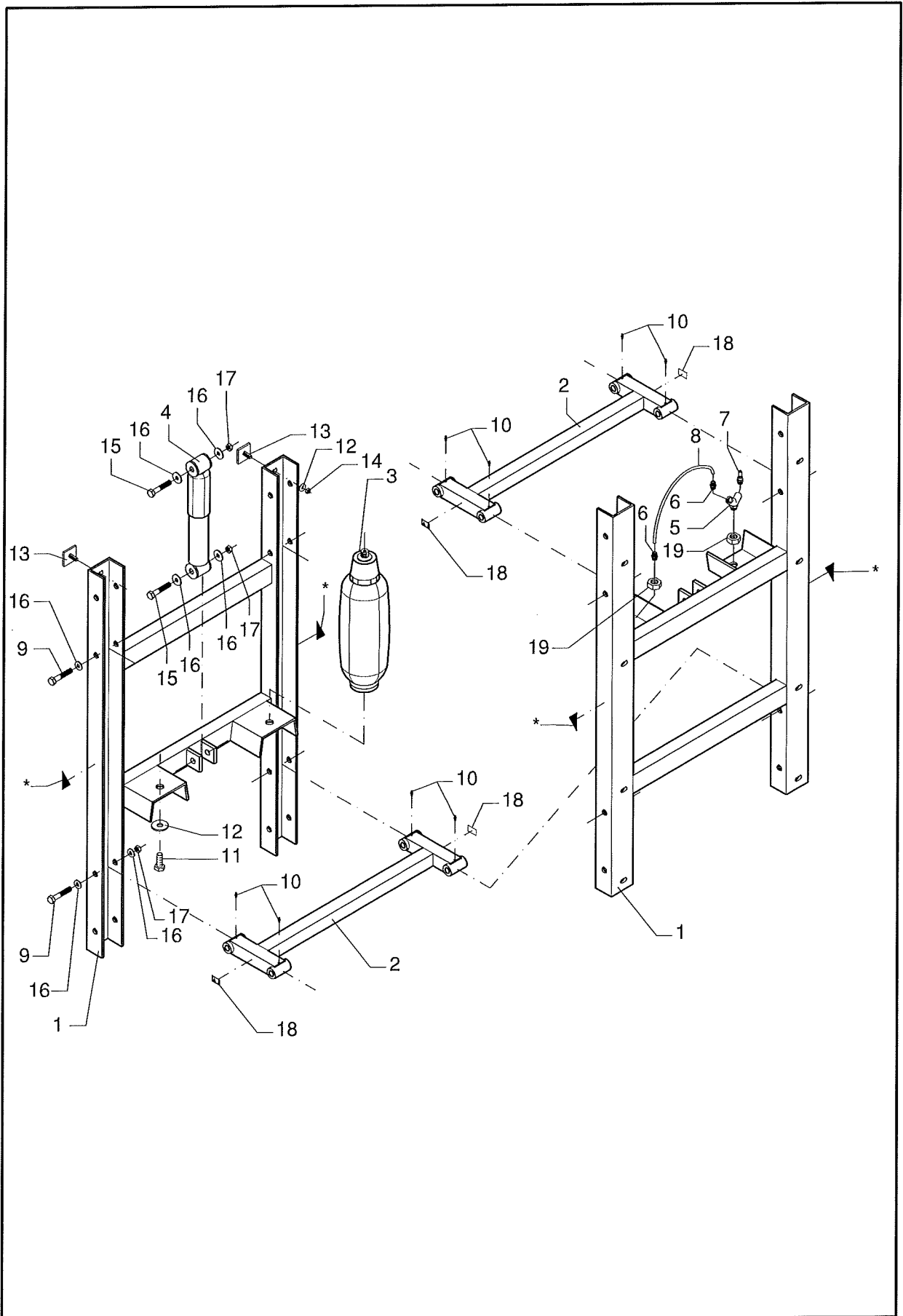


**TEYME**  
Tecnología Agrícola. s.l.

miércoles, 15 de febrero de 2006

Despiece

Página 1 de 1




**TEYME**  
 Tecnología Agrícola, s.l.  
 Pol. Ind. SAU, 3, Calles A-C - 25131 TORRESERONA (Lleida) - SPAIN  
 Telf. 973 750 033 - Fax. 973 751 581  
 www.mulleyme.com - e-mail: mulleyme@mulleyme.com

**COMPLEMENTOS**  
**SUSPENSION NEUMATICA**

121 103 0010  
 21-06-06 D0600264

Pos.	Referencia	Articulo	Cantidad
1	* 2400088077	BASTIDOR SUSPENSION NEUMATICA PIN.	2
2	* 2400088074	BALANCIN SUSPENSION NEUMATICA PIN.	2
3	1000910001	PULMON SUSPENSION NEUMATICA	2
4	1000910002	AMORTIGUADOR SUSPENSION NEUMATICA	1
5	0041020001	RACOR NEUM. FORMA "Y" H-M-H 1/8"	1
6	0041010002	RACOR RECTO M1/8" TUBO ø6	2
7	0041030001	VALVULA NEUM. M 1/8	1
8	1056100006	TUBO POLIAMIDA ø6extxøint4 BLANCO	500 1
9	0500201611	TLLO. DIN-931 8.8 Zn M16x110	4
10	0750010600	ENGRASADOR AT-503 G-100 M6	8
11	0500101225	TLLO. DIN-933 8.8 Zn M12x25	2
12	0550150012	ARANDELA D-9021 Zn D.12	10
13	* 2400130062	BRIDA FIJACION AB.65 M12	8
14	0521101200	TUERCA D-985 AUTOBL. Zn M12	8
15	0500201690	TLLO. DIN-931 8.8 Zn M16x90	2
16	0550100016	ARANDELA PLANA D-125 Zn D.16	12
17	0521101600	TUERCA D-985 AUTOBL. Zn M16	6
18	1010050025	ADHESIVO ENGRASE CORTO	4
19	0526000002	TUERCA ROSCA SAE 3/4" DIN-934 Zn.	2

1211030010 SUSPENSION NEUMATICA



dimecres, 21 / juny / 2006

Despiece

Página 1 de 1