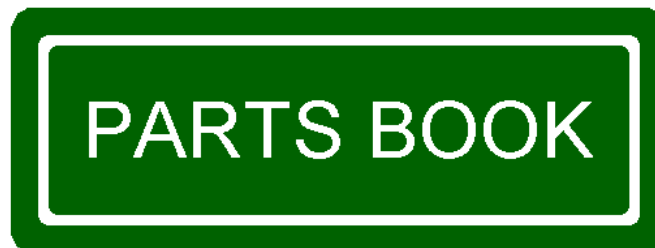




GENERATION 2

RIPPER-BEDDER

RIPPER-BEDDER-PLANTER



06-SERIES

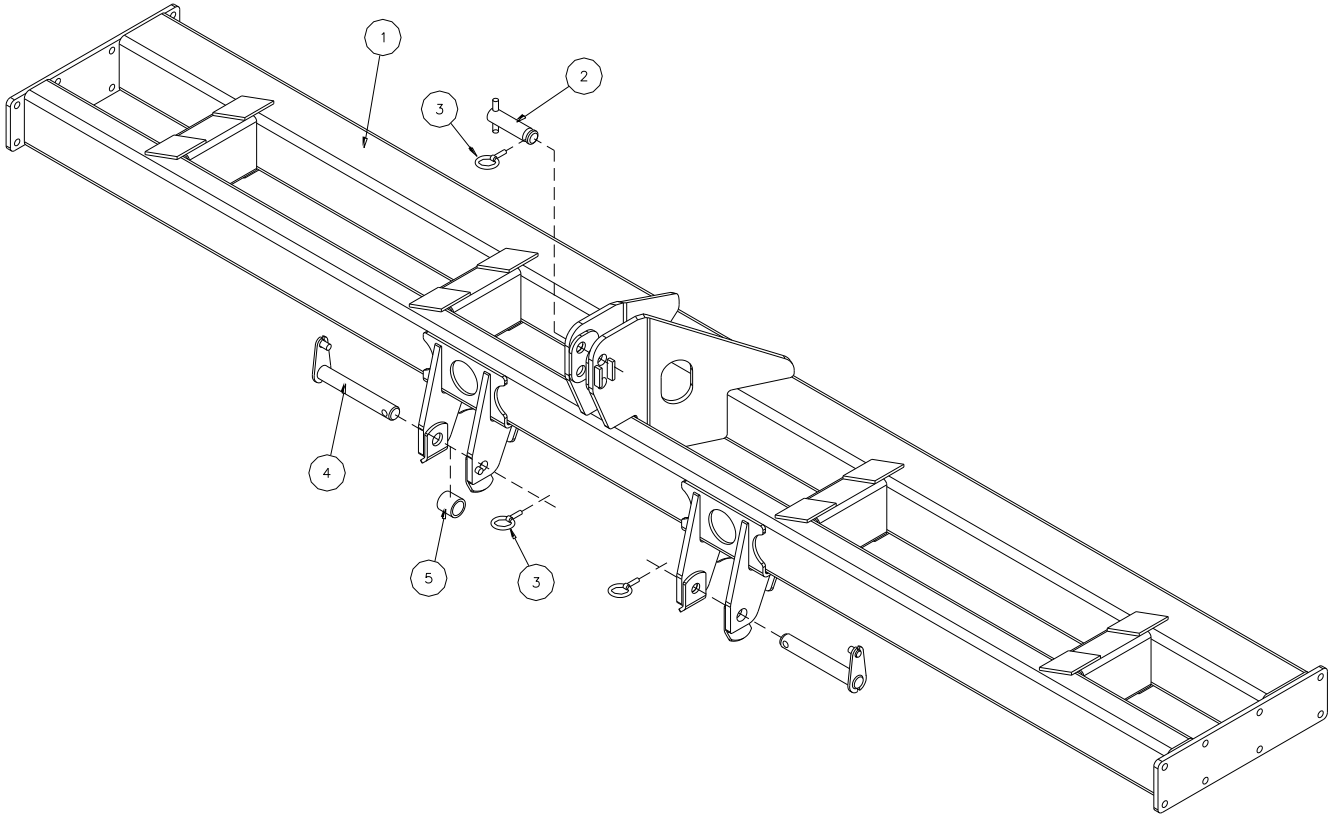
TABLE OF CONTENTS

G2 4-ROW (36-40) & 6-ROW (30) RIGID TOOL BAR	2
G2 40" EXTENSION FRAME	3
8-ROW (36-40) & 12-ROW (30) OVER CENTER FOLD TOOL BAR.....	4-5
12-ROW (36-38) OVER CENTER FOLD TOOL BAR	6-7
CATEGORY III & IV STEP PIN	7
G2 8-ROW STACK-FOLD TOOL BAR.....	8-9
G2 12-ROW (30) & 12-ROW (36-38)	10-11
4 X 4 X 1/4 WALL TOOL BARS	12
RIP/STRIP REARWARD JACKSTAND.....	13
RIP/STRIP FORWARD JACKSTAND	13
G2 PARALLEL LINKAGE	14-15
OCF PARALLEL LINKAGE	16-17
4 X 4 FRONT & REAR DISC MOUNTING BRACKETS.....	18
DISC ASSEMBLY	19
4 X 4 TOOL BAR CLAMP	20
G2 SUPPORT CHAIN ASSEMBLY	20
REAR TOOL BAR GAUGE WHEEL.....	21
REAR GAUGE WHEEL MOUNTING BUNDLE.....	21
3/4" RB WIDE BODY RIPPER	22-23
SAFETY REFLECTORS	23

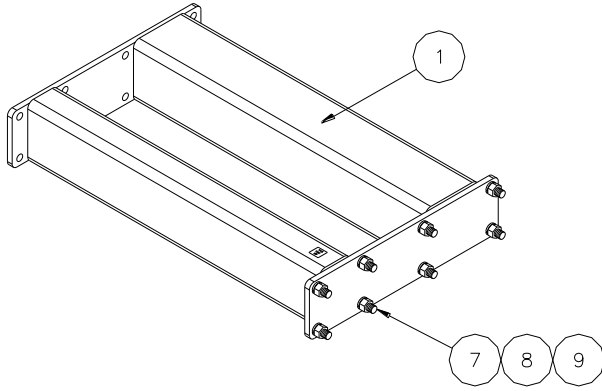
OPTIONAL EQUIPMENT

LT & RT GAUGE WHEEL	24-25
TIRE & RIM ASSEMBLY	25
7" TURNBUCKLE GAUGE WHEEL	26-27
7 X 4 MOUNTING HARDWARE.....	27
LT & RT GAUGE WHEEL (OCF)	28-29
1 1/4" RB WIDE BODY RIPPER	30-31
3/4" RESET ON THE GO RIPPER SHANK	32-33
1 1/4" RESET ON THE FO RIPPER SHANK	32-33
RIGID SHANK.....	34
1/2 X 1 3/4 COMPRESSION SPRING PLOW	35
DISC SCRAPER KIT	36
BALK PLOW	37
S-TINE BALK PLOW BRACKET	37
2 X 2 HIGH CLEARANCE S-TINE	38

GENERATION 2
4-ROW (36-40) & 6-ROW (30) RIGID TOOL BAR
 (16-082-171)



ITEM	PART NO	SERIAL NO OR YR	DESCRIPTION	QTY
1	16-080-331		RIGID TOOL BAR, 4R (36-38)	1
2	06-081-018		PIN, MAST	1
3	02-050-002	(-2004)	KLIK PIN, 7/16 X 1 3/4	(3)
	03-050-094	(2005-)	KLIK PIN, 7/16 X 2	3
4	05-026-008	(-2004)	PIN, STEP HITCH	(2)
	16-080-316	(2005-)	PIN, CAT III-IIIIN HITCH	2
5	05-024-010		SPACER, CAT III	2



**GENERATION 2
40" EXTENSION FRAME**
(16-082-172)

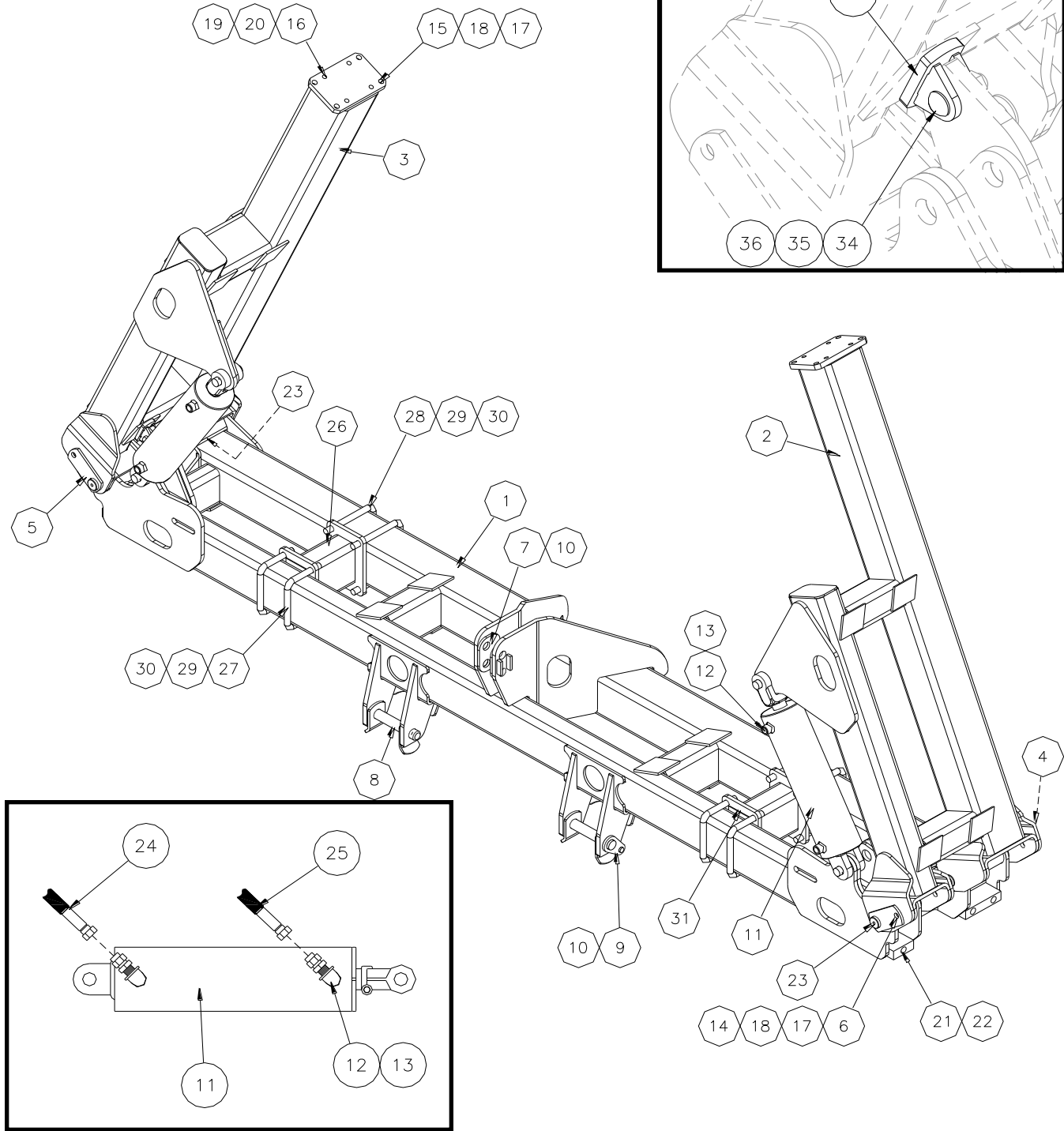
USED ON 6R (36-40) & 8R (30)

ITEM	PART NO	SERIAL NO OR YR	DESCRIPTION	QTY
1	16-080-333		FRAME, 40" EXTENSION	1
2	48-091300		CAPSCREW, 3/4 X 2 1/4 G5 PLT	8
3	66-010350		LOCKWASHER, 3/4 PLT	8
4	68-010350		HEX NUT, 3/4 PLT	8

OVER CENTER FOLD TOOL BAR

8-ROW (36-40)
(16-082-167) (STD)

12-ROW (30)
(16-082-166)



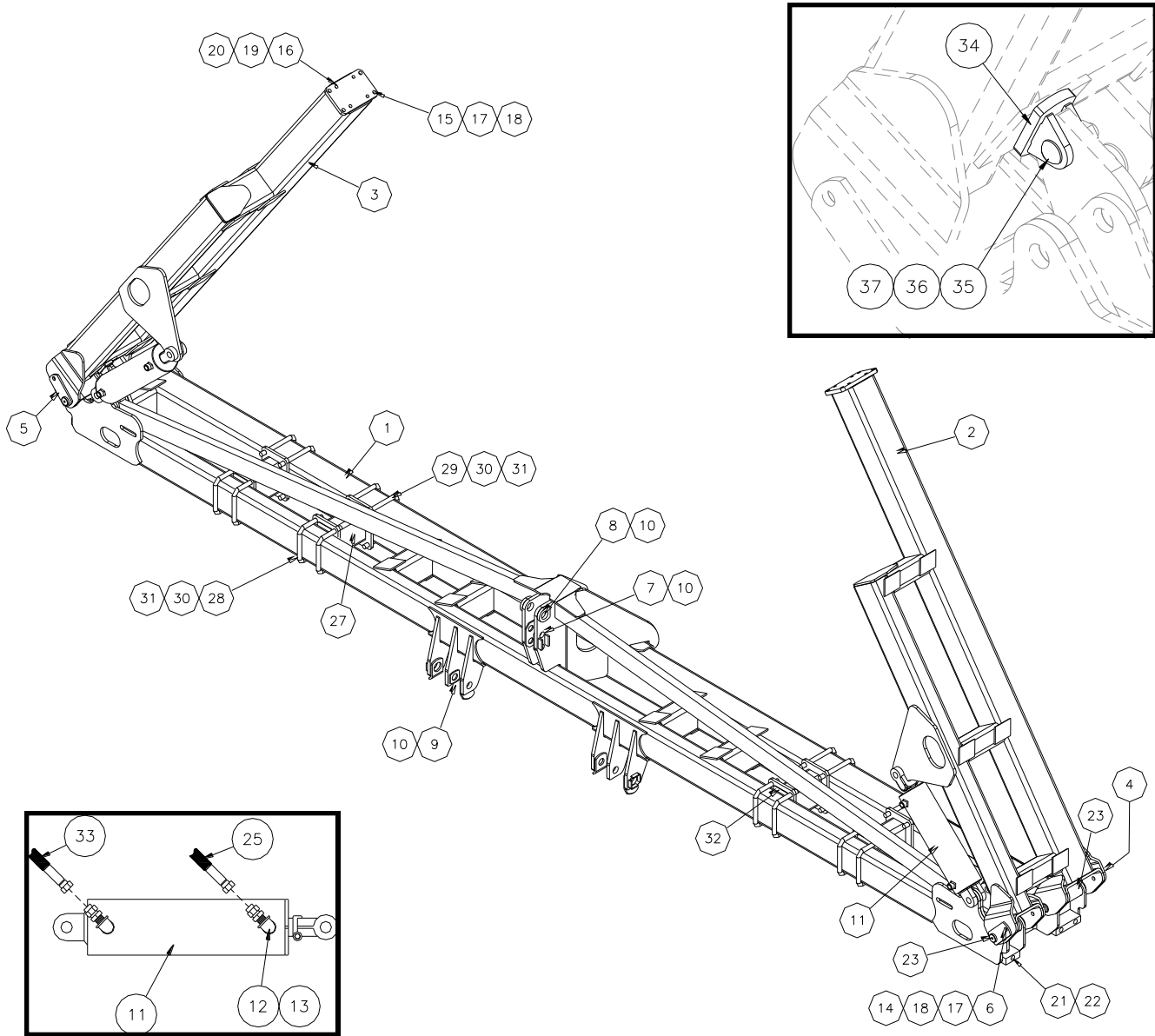
ITEM	PART NO	SERIAL NO OR YR	DESCRIPTION	QTY	
				8-R	12-R
1	16-080-321		CENTER SECTION, 8R (36-42)	1	-
	16-080-326		CENTER SECTION, 12R (30)	-	1

ITEM	PART NO	SERIAL NO OR YR	DESCRIPTION	QTY	
				8R	12R
2	16-080-324		WING, 8R (36-40) LT	1	-
	16-080-327		WING, 12R (30) LT	-	1
3	16-080-325		WING, 8R (36-40) RT	1	-
	16-080-328		WING, 12R (30) RT	-	1
4	16-080-311		PIN, LONG PIVOT	2	2
5	16-080-312		PIN, SHORT PIVOT	2	2
6	48-091350		CAPSCREW, 3/4 X 2 1/2 G5 PLT	4	4
7	06-081-018		PIN, MAST (PAGE 11)	1	1
8	05-024-010		SPACER, CAT III	2	2
9	16-080-316		PIN, CAT III-IIIN HITCH	2	2
10	03-050-094		LINCH PIN, 7/16 X 2	3	3
11	16-061-078		CYLINDER, 5 1/2 X 16 STROKE	2	2
12	42-059-017		ADAPTER, 10MB-8FPX-90	4	4
13	16-059-011		RESTRICTOR, 8MP-8FPX .094	4	4
14	68-010350		HEX NUT, 3/4 PLT	4	4
15	48-091275		CAPSCREW, 3/4 X 2 G5 PLT	8	8
16	48-200029		CAPSCREW, 5/8 X 2 G8 PLT	8	8
17	62-020045		FLATWASHER, 3/4 SAE PLT	12	12
18	66-010350		LOCKWASHER, 3/4 PLT	12	12
19	62-020040		FLATWASHER, 5/8 PLT	8	8
20	66-010300		LOCKWASHER, 5/8 PLT	8	8
21	48-100480		CAPSCREW, 1 X 2 1/2 G5 PLT	6	6
22	70-010255		JAM NUT, 1 PLT	6	6
23	02-050-005		FITTING, 1/4-28 STRT	4	4
*24	06-081-020		HYDRAULIC HOSE, 80"	1	1
25	07-059-003		HYDRAULIC HOSE, 3/8" X 100"	2	2
26	16-080-334		SUPPORT, ADJ. TOOL BAR	2	2
27	04-050-086		U-BOLT, 7/8 X 5 3/4 X 7 15/16	4	4
28	04-050-075		U-BOLT, 7/8 X 8 3/4 X 7 15/16	4	4
29	66-010400		LOCKWASHER, 7/8 PLT	16	16
30	68-010400		HEX NUT, 7/8 PLT	16	16
31	16-027-121		SHIM, 11 GA X 4 1/4 X 8	2	2
*32	07-050-001		HYDRAULIC TEE, 1/2" NPTF	2	2
33	16-080-346		PAD, WING STOP PIVOT	2	2
34	16-024-220		BUSHING, 3/4 X 1 1/4 X 25/32	2	2
35	52-050400		CARRIAGE BOLT, 3/4 X 2 1/2 G5	2	2
36	72-010150		LOCKNUT, 3/4 G"B" PLT	2	2
*37	07-059-004		HYDRAULIC HOSE, 3/8" X 80"	2	2

* THESE HYDRAULIC COMPONENTS NOT SHOWN

12-ROW OVER CENTER FOLD TOOL BAR

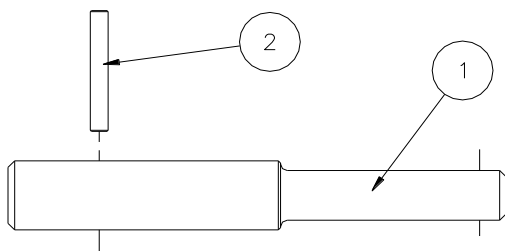
(16-082-164) STANDARD
(36"-38")



ITEM	PART NO	SERIAL NO OR YR	DESCRIPTION	QTY
1	16-080-300		CENTER SECTION, 12R (36-38)	1
2	16-080-299		WING, 12R (36-40) LT	1
3	16-080-309		WING, 12R (36-40) RT	1
4	16-080-311		PIN, LONG PIVOT	2
5	16-080-312		PIN, SHORT PIVOT	2
6	48-091350		CAPSCREW, 3/4 X 2 1/2 G5 PLT	4
7	06-081-018		PIN, MAST (PAGE A-54)	1
8	16-080-133		PIN, CAT IV MAST	1
9	16-081-011		STEP-PIN, CAT III-IV	2
10	03-050-094		LINCH PIN, 7/16 X 2	4

ITEM	PART NO	SERIAL NO OR YR	DESCRIPTION	QTY
11	16-061-078		CYLINDER, 5 1/2 X 16	2
12	42-059-017		ADAPTER, 10MB-8FPX-90	4
13	16-059-011		RESTRICTOR, 8MP-8FP-.094	4
14	68-010350		HEX NUT, 3/4 PLT	4
15	48-091275		CAPSCREW, 3/4 X 2 G5 PLT	8
16	48-200029		CAPSCREW, 5/8 X 2 G8 PLT	8
17	62-020045		FLATWASHER, 3/4 SAE PLT	12
18	66-010350		LOCKWASHER, 3/4 PLT	12
19	62-020040		FLATWASHER, 5/8 PLT	8
20	66-010300		LOCKWASHER, 5/8 PLT	8
21	48-100480		CAPSCREW, 1 X 2 1/2 G5 P	6
22	70-010255		JAM NUT, 1 PLT	6
23	02-050-005		FITTING, 1/4-28 STRT	4
*24	06-081-020		HYDRAULIC HOSE, 80"	1
25	03-059-002		HYD HOSE, 3/8" X 120"	2
*26	07-050-001		TEE, 1/2" NPTF HYDRAULIC	2
27	16-080-334		SUPPORT, ADJ TOOL BAR	4
28	04-050-086		U-BOLT, 7/8 X 5 3/4 X 7 15/16	8
29	04-050-075		U-BOLT, 7/8 X 8 3/4 X 7 15/16	8
30	66-010400		LOCKWASHER, 7/8 PLT	32
31	68-010400		HEX NUT, 7/8 PLT	32
32	16-027-121		SHIM, 11 GA X 4 1/4 X 8	4
33	07-059-005		HYD HOSE, 3/8" X 150"	2
34	16-080-346		PAD, WING STOP PIVOT	2
35	16-024-220		BUSHING, 3/4 X 1 1/4 X 25/32	2
36	52-050400		CARRIAGE BOLT, 3/4 X 2 1/2	2
37	72-010150		LOCKNUT, 3/4 G"B" PLT	2
*38	47-059-002		QUICK COUPLER, 1/2"	2

* THESE HYDRAULIC COMONENTS NOT SHOWN.

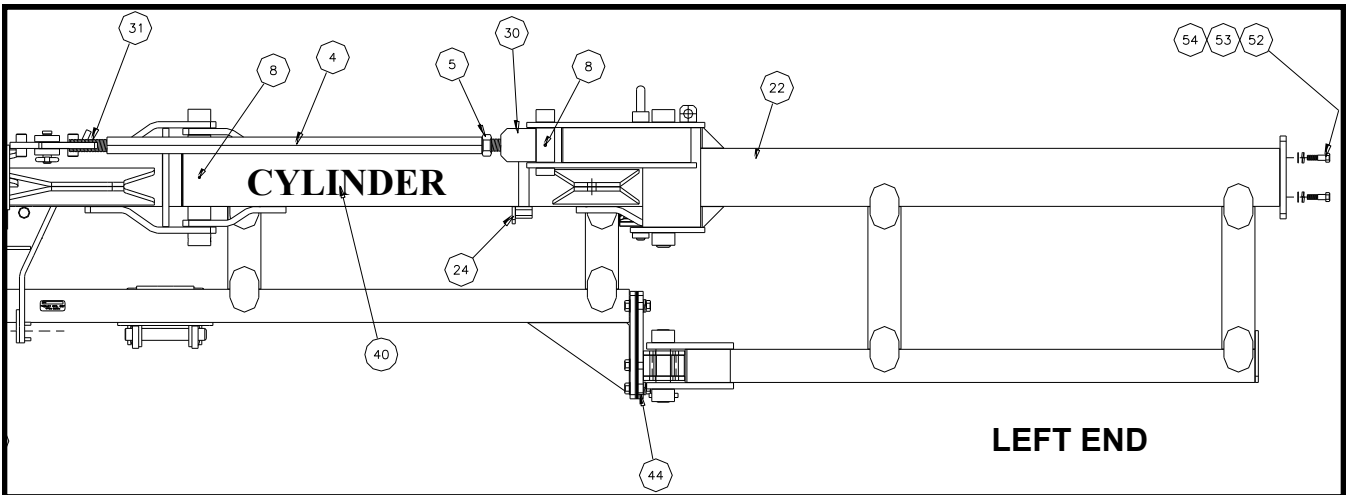
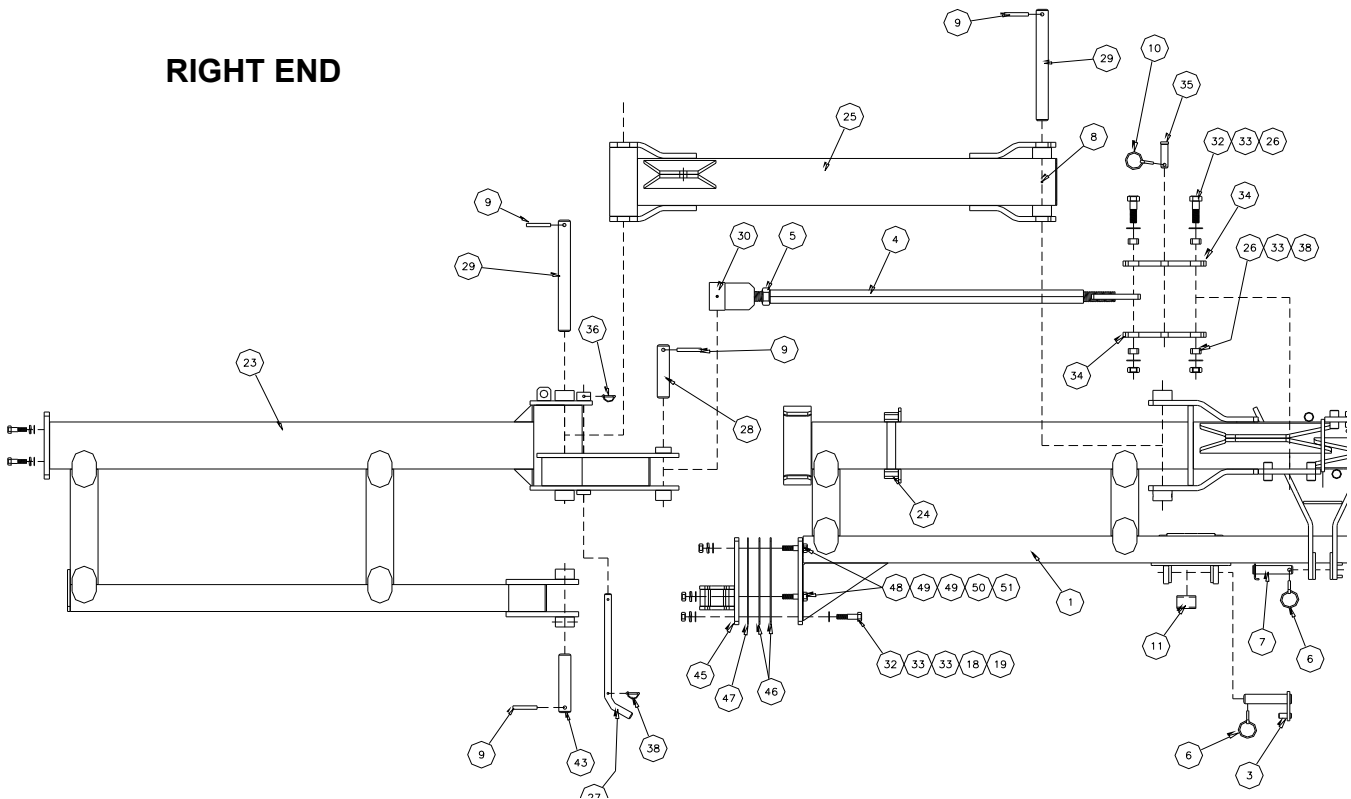


CATEGORY III & IV STEP PIN
(16-081-011)

ITEM	PART NO	SERIAL NO OR YR	DESCRIPTION	QTY
1	16-026-029		STEP PIN, '98 CAT III & IV	1
2	12-050-001		ROLL PIN, 1/2 X 3 1/2	1

G2 STACK-FOLD TOOL BAR

(16-082-182) 8R (36-40)



ITEM	PART NO	SERIAL NO OR YR	DESCRIPTION	QTY
1	16-080-366		CENTER SECTION, 8R (36-40) G2	1
3	16-080-316		HITCH PIN, CAT II - IIIN	2
4	16-026-035		LINKAGE, HEX TOP	2
5	70-010300		JAM NUT, 1 1/2 HEX	2
6	03-050-094		LINCH PIN, 7/16 X 2	3
7	07-080-074		PIN, LONG MAST	1
8	02-050-005		FITTING, 1/4-28 STRAIGHT	6

ITEM	PART NO	SERIAL NO OR YR	DESCRIPTION	QTY
9	12-050-001		ROLL PIN, 1/2 X 3 1/2	8
10	02-050-002		KLIK PIN, 7/16 X 1 3/4	2
11	05-024-010		SPACER, CAT III	2
18	66-010450		LOCKWASHER, 1" PLT	4
19	68-010450		HEX NUT, 1" PLT	4
22	16-080-367		WING, 8R GII R/S LT	1
23	16-080-368		WING, 8R GII R/S RT	1
24	16-081-005		WING STOP	2
25	16-080-151		WING, 8R PIVOT	2
26	16-024-060		BUSHING, FLOAT	8
27	16-026-023		PIN, LONG WING LOCK	2
28	16-026-034		PIN, 8R CONTROL ARM	2
29	16-026-025		PIN, CTR SEC PIVOT	4
30	16-080-141		ADJUSTMENT, R.H. LINKAGE	2
31	16-080-140		ADJUSTMENT, L.H. LINKAGE	2
32	48-100490		CAPSCREW, 1 X 3 1/4 G5 PLT	8
33	62-020050		FLATWASHER, 1" SAE	16
34	16-023-172		LINK, FLOAT	4
35	11-050-030	(-2007)	CLEVIS PIN, 1 X 3 1/2	(2)
	16-050-092	(2008-)	TOP LINK PIN	2
36	33-050-105		SNAPPER PIN, 5/16 X 2 1/2	2
38	72-040100		LOCKNUT, 1" HEX	4
*39	16-081-009		HOSE BUNDLE, 8R STACK	1
▲*40	16-081-010		CYL. BUNDLE, 8R STACK	2
*41	47-059-002		QUICK COUPLER, 1/2"	2
*42	07-059-004		HYDRAULIC HOSE, 3/8 X 80	2
43	16-026-037		PIN, CRADLE	2
44	16-080-360		CRADLE, LT STACKER WIDE	1
45	16-080-361		CRADLE, RT STACKER WIDE	1
46	16-027-148		SHIM, 10 GA WIDE	4
47	16-027-149		SHIM, 16 GA WIDE	2
48	48-091375		CAPSCREW, 3/4 X 3 G5 PLT	8
49	62-020045		FLATWASHER, 3/4 SAE PLT	16
50	66-010350		LOCKWASHER, 3/4 PLT	8
51	68-010350		HEX NUT, 3/4-10 PLT	8
52	48-200029		CAPSCREW, 5/8 X 2 G8 PLT	8
53	62-020040		FLATWASHER, 5/8 PLT	8
54	66-010300		LOCKWASHER, 5/8 PLT	8

▲ Refer to page M-11

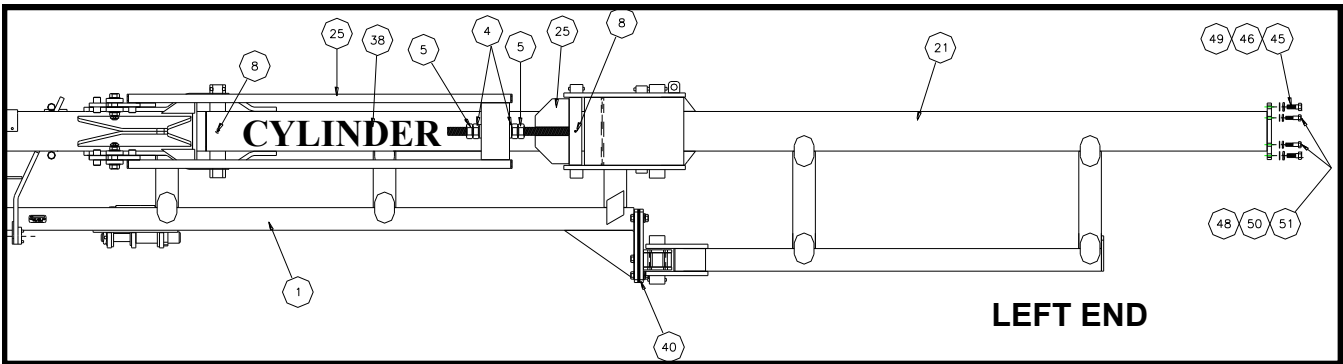
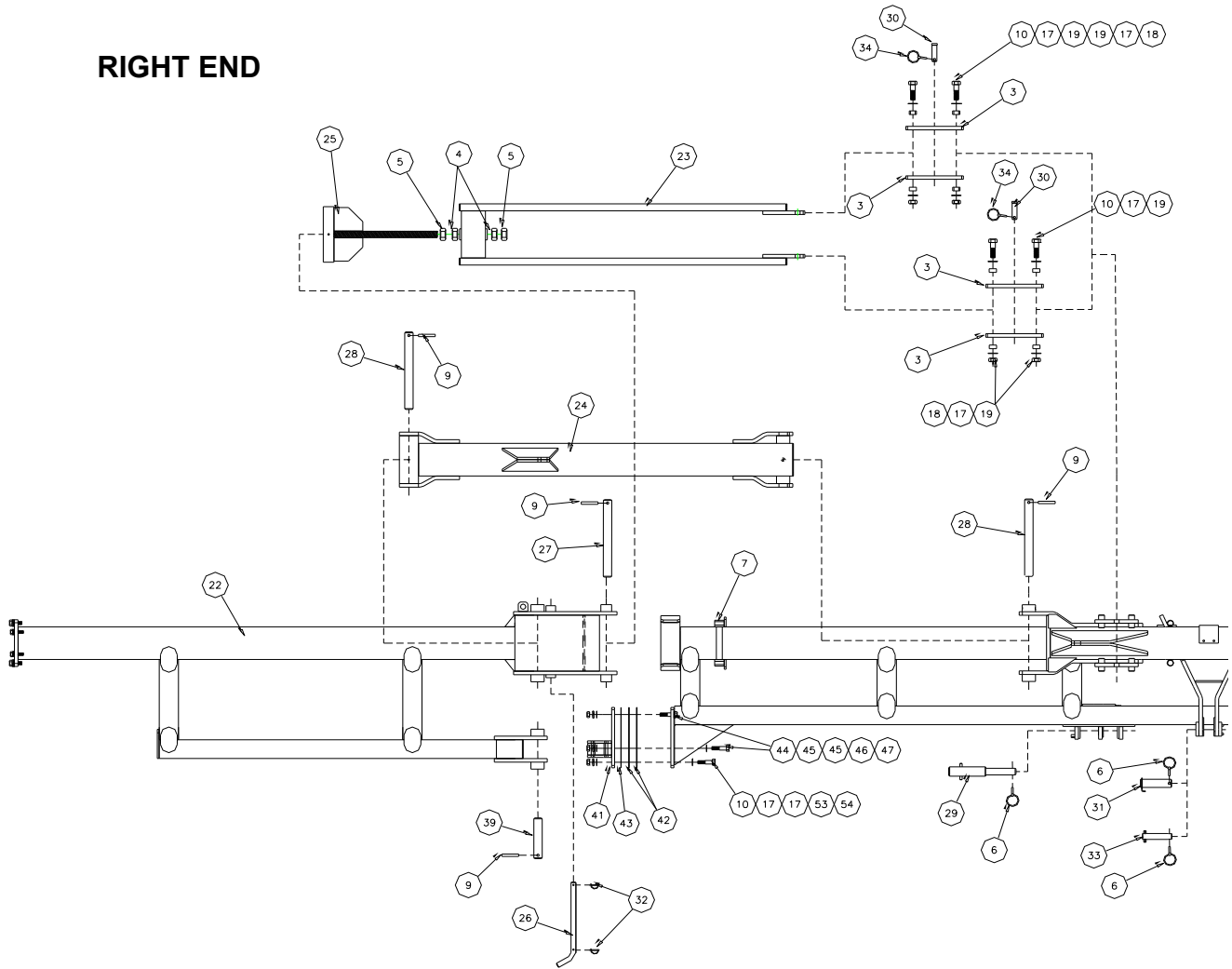
*NOT SHOWN

G2 STACK-FOLD TOOL BAR

(16-082-187) 12R (30")

(16-082-180) 12R (36-38)

RIGHT END



LEFT END

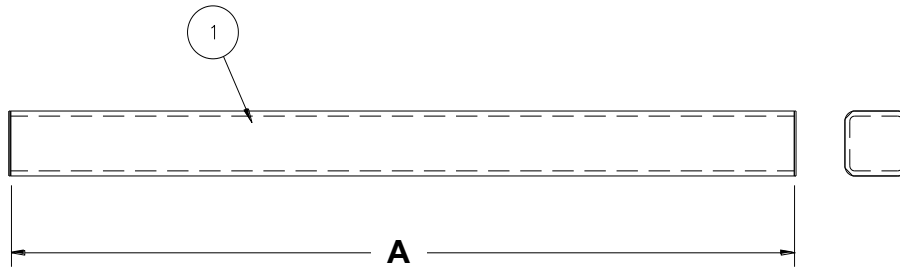
ITEM	PART NO	SERIAL NO OR YR	DESCRIPTION	QTY	
				30"	36"-38"
1	16-080-375		CENTER, 12R (30) G2 R/S	1	-
	16-080-357		CENTER, 12R (36-38) G2 R/S	-	1
3	16-023-172		LINK, FLOAT	8	8
4	68-010500		HEX NUT, 1 1/2"	4	4
5	70-010300		JAM NUT, 1 1/2 HEX	4	4
6	03-050-094		LINCH PIN, 7/16 X 2	4	4
7	16-081-005		BUNDLE, WING STOP	2	2

ITEM	PART NO	SERIAL NO OR YR	DESCRIPTION	QTY	
				30"	36"-38"
8	02-050-005		FITTING, 1/4-28 STRAIGHT	6	6
9	12-050-001		ROLL PIN, 1/2 X 3 1/2	8	8
10	48-100490		CAPSCREW, 1 X 3 1/4 G5 PLT	12	8
17	62-020050		FLATWASHER, 1 SAE	24	16
18	72-040100		LOCKNUT, 1 HEX	8	8
19	16-024-060		BUSHING, FLOAT	16	16
21	16-080-376		WING, 12R (30) GII LT	1	-
	16-080-358		WING, 12R (36-38) GII LT	-	1
22	16-080-377		WING, 12R (30) GII RT	1	-
	16-080-359		WING, 12R (36-38) GII RT	-	1
23	16-080-172		ARM, 12R 30" LEVELING	2	-
	16-080-144		ARM, LEVELING	-	2
24	16-080-150		WING, 12R 30" PIVOT	2	-
	16-080-147		WING, PIVOT	-	2
25	16-080-143		ROD, LEVEL ADJUSTMENT	2	2
26	16-026-023		PIN, LONG WING LOCK	2	2
27	16-026-026		PIN, CONTROL ARM PIVOT	2	2
28	16-026-025		PIN, CTR SEC PIVOT	4	4
29	16-081-011		STEP PIN, CAT III & IV	2	2
30	11-050-030	(-2007)	CLEVIS PIN, 1 X 3 1/2	(4)	(4)
	16-050-092	(2008-)	TOP LINK PIN	4	4
31	16-080-133		MAST PIN, CAT IV	1	1
32	33-050-105		SNAPPER PIN, 5/16 X 2 1/2	2	2
33	06-081-018		MAST, PIN	1	1
34	02-050-002		KLIL PIN, 7/16 X 1 3/4	4	4
*35	06-081-020		HYDRAULIC HOSE, 3/8 X 80	1	1
*37	16-081-008		HOSE BUNDLE, 12R STACK	1	1
▲*38	16-081-007		CYL. BUNDLE, 12R STACK	2	2
39	16-026-037		PIN, CRADLE	2	2
40	16-080-360		CRADLE, LT 12R WIDE	1	1
41	16-080-361		CRADLE, RT 12R WIDE	1	1
42	16-027-148		SHIM, 10 GA WIDE	4	4
43	16-027-149		SHIM, 16 GA WIDE	2	2
44	48-091375		CAPSCREW, 3/4 X 3 G5 PLT	8	8
45	62-020045		FLATWASHER, 3/4 SAE PLT	24	24
46	66-010350		LOCKWASHER, 3/4 PLT	16	16
47	68-010350		HEX NUT, 3/4 PLT	8	8
48	48-200029		CAPSCREW, 5/8 X 2 G8 PLT	8	8
49	48-091275		CAPSCREW, 3/4 X 2 G5 PLT	8	8
50	62-020040		FLATWASHER, 5/8 SAE PLT	8	8
51	66-010300		LOCKWASHER, 5/8 PLT	8	8
52	66-010450		LOCKWASHER, 1 PLT	4	4
53	68-010450		HEX NUT, 1 PLT	4	4

*NOT SHOWN

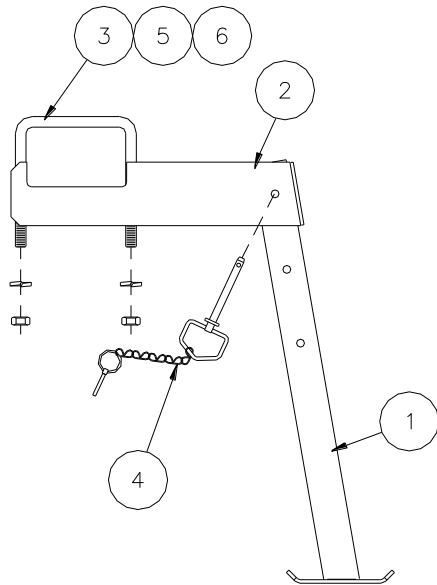
▲ Refer to page M-11

4 X 4 X 1/4" WALL TOOL BARS

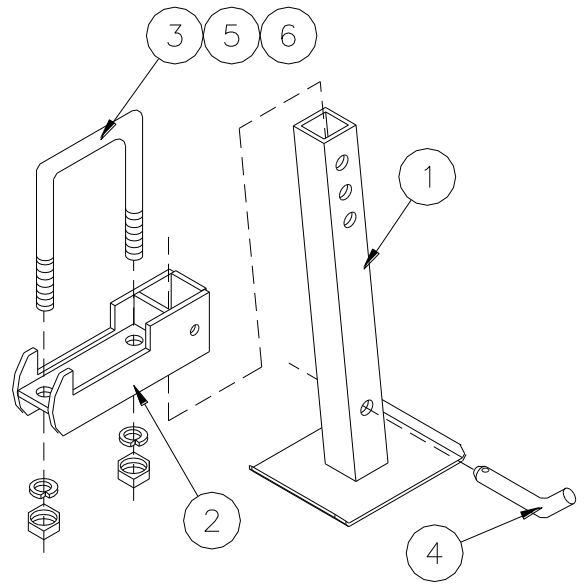


ITEM	PART NO	SERIAL NO OR YR	DESCRIPTION	DIM "A"
1	06-080-175		TOOL BAR, 72"	72"
	04-080-030		TOOL BAR, 80"	80"
	06-080-023		TOOL BAR, 104"	104"
	06-080-177		TOOL BAR, 130"	130"
	06-080-217		TOOL BAR, 140"	140"
	04-080-005		TOOL BAR, 168"	168"
	06-080-208		TOOL BAR, 198"	198"
	06-080-032		TOOL BAR, 208"	208"
	06-080-020		TOOL BAR, 248"	248"

**RIP/STRIP REARWARD
JACKSTAND**
(16-082-176)



**RIP/STRIP FORWARD
JACKSTAND**
(16-082-178)

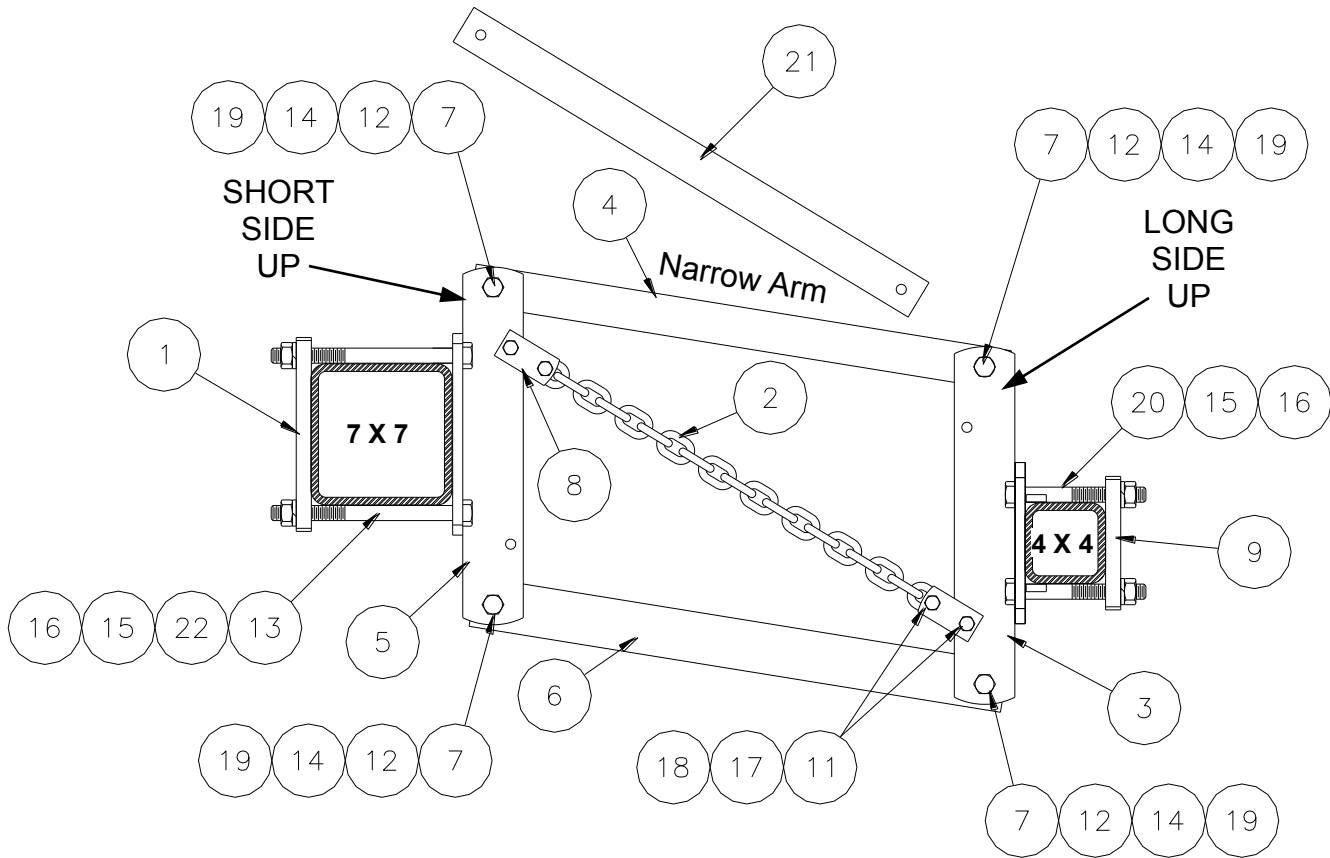


ITEM	PART NO.	SERIAL NO OR YR	DESCRIPTION	QTY	
				-176	-178
1	16-080-351		STAND, HD JACK	1	-
	20-080-064		LEG, JACKSTAND	-	1
2	04-080-298		BRACKET, HD JACKSTAND	1	-
	04-080-125		BRACKET, HD JACKSTAND	-	1
3	04-050-077		U-BOLT, 3/4 X 8 1/2 X 7 13/16	1	1
4	23-050-003		PIN, ADJ LOCK	1	-
	04-050-134		PIN, 1/2" BENT HITCH	-	1
5	66-010350		LOCKWASHER, 3/4 PLT	2	2
6	68-010350		HEX NUT, 3/4 PLT	2	2

G2 PARALLEL LINKAGE

(06-082-166) (7 X 7)

(06-082-170) (7 X 7)CENTER

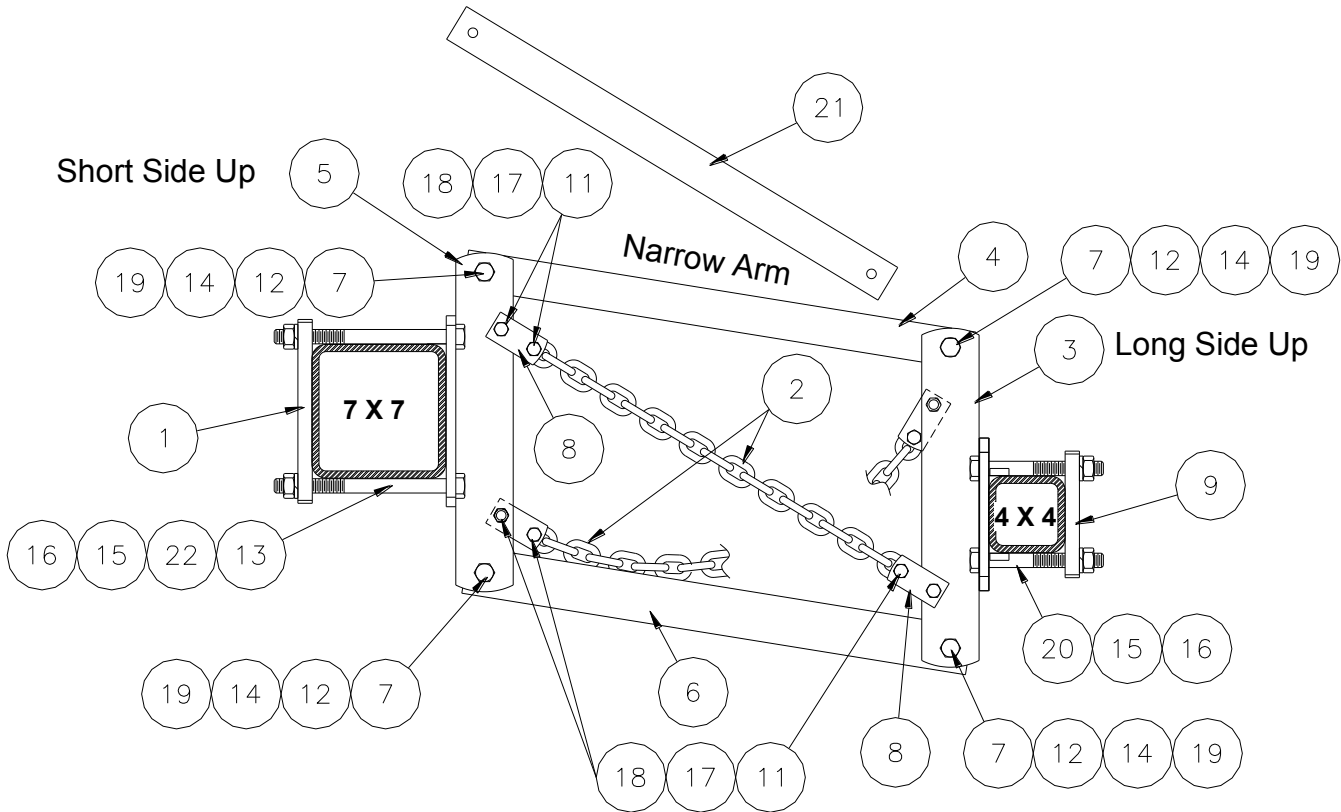


ITEM	PART NO	SERIAL NO OR YR	DESCRIPTION	QTY	
				-166	-170
1	04-023-213		CAP, 7" TOOL BAR	2	2
2	06-050-033		CHAIN, LINKAGE (28 LINKS)	1	1
3	06-080-190		BRACKET, LINKAGE W/O TRUN.	1	-
	06-080-243		BRACKET, CENTER LINKAGE	-	1
4	06-080-180		ARM, LINKAGE 26 7/8	-	-
	06-080-268		ARM, LINKAGE 38 7/8	1	1
5	06-080-151		BRACKET, LINKAGE (7X7)	1	-
	06-080-206		BRACKET, STACKER LINKAGE	-	1
6	06-080-267		ARM, LINKAGE (38 11/16")	1	1
7	06-024-004		BUSHING, LINKAGE PIVOT	8	8
8	06-023-042		CLEVIS, CHAIN	4	4
9	05-023-031		CAP, 4" TOOL BAR	2	-
11	48-090450		CAPSCREW, 7/16 X 2 G5 PLT	4	4

ITEM	PART NO	SERIAL NO OR YR	DESCRIPTION	QTY	
				-166	-170
12	48-091100		CAPSCREW, 5/8 X 5 G5 PLT	4	4
13	48-100103		CAPSCREW, 3/4 X 9 1/2 G5 PLT	4	4
14	62-010250		FLATWASHER, 5/8 PLT	8	8
15	66-010350		LOCKWASHER, 3/4 PLT	8	4
16	68-010350		HEX NUT, 3/4 PLT	8	4
17	66-010200		LOCKWASHER, 7/16 PLT	4	4
18	68-010200		HEX NUT, 7/16 PLT	4	4
19	72-020050		LOCKNUT, 5/8 G"C" PLT	4	4
20	48-100060		CAPSCREW, 3/4 X 6 1/2 G5 PLT	4	-
21	06-023-308		STRAP, G2 LINK. TRANSPORT	1	1
22	62-020045		FLATWASHER, 3/4 SAE PLT	4	4

OCF PARALLEL LINKAGE

(06-082-168) (36 7/8")

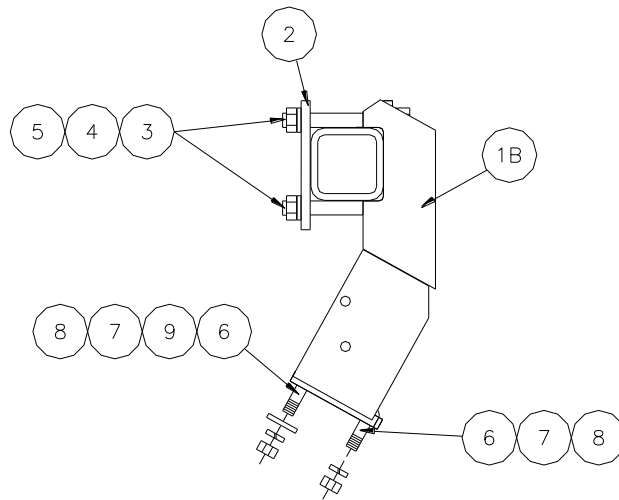


ITEM	PART NO	SERIAL NO OR YR	DESCRIPTION	QTY
1	04-023-213		CAP, 7" TOOL BAR	2
2	06-050-010		CHAIN, LINKAGE (19 LINKS)	-
	06-050-033		CHAIN, LINKAGE (28 LINKS)	1
3	06-080-190		BRACKET, LINKAGE W/O TRUN.	-
4	06-080-180		ARM, LINKAGE 26 7/8	-
	06-080-268		ARM, LINKAGE 38 7/8	1
5	06-080-151		BRACKET, LINKAGE (7X7)	-
6	06-080-051		ARM, LINKAGE (26 11/16")	-
	06-080-267		ARM, LINKAGE (38 11/16")	1
7	06-024-004		BUSHING, LINKAGE PIVOT	8
8	06-023-042		CLEVIS, CHAIN	4
9	05-023-031		CAP, 4" TOOL BAR	2
11	48-090450		CAPSCREW, 7/16 X 2 G5 PLT	8
12	48-091100		CAPSCREW, 5/8 X 5 G5 PLT	4
13	48-100103		CAPSCREW, 3/4 X 9 1/2 G5 PLT	4

ITEM	PART NO	SERIAL NO OR YR	DESCRIPTION	QTY
14	62-010250		FLATWASHER, 5/8 PLT	8
15	66-010350		LOCKWASHER, 3/4 PLT	8
16	68-010350		HEX NUT, 3/4 PLT	8
17	66-010200		LOCKWASHER, 7/16 PLT	8
18	68-010200		HEX NUT, 7/16 PLT	8
19	72-020050		LOCKNUT, 5/8 G"C" PLT	4
20	48-100060		CAPSCREW, 3/4 X 6 1/2 G5 PLT	4
21	06-023-222		STRAP, LINKAGE TRANSPORT	-
	06-023-308		STRAP, G2 LINKAGE TRANSPORT	1
22	62-020045		FLATWASHER, 3/4 SAE PLT	4

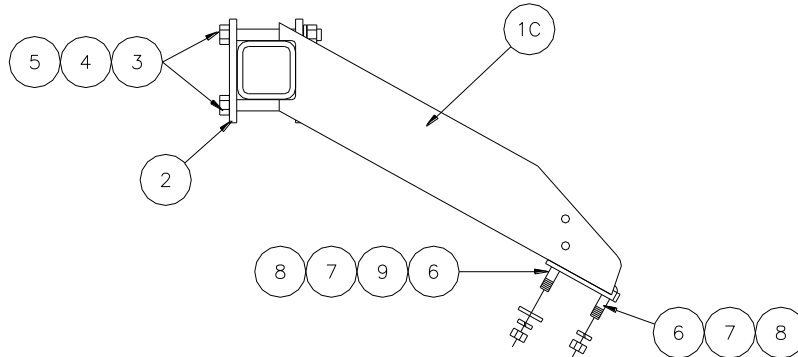
4 X 4 FRONT DISC MTG BRACKET

(06-082-081)(RBP)

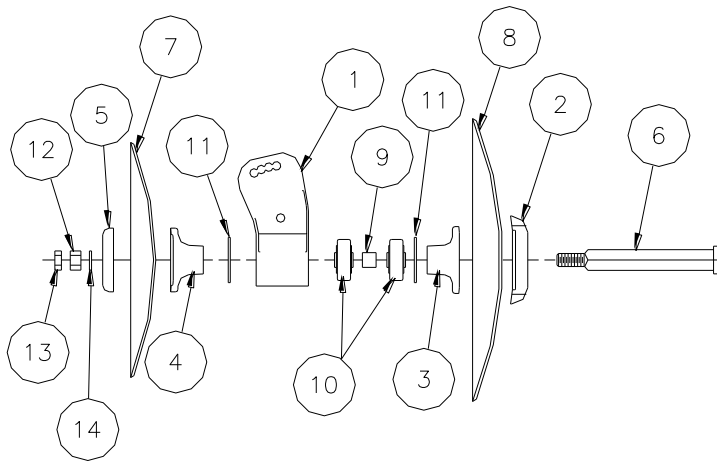


4 X 4 REAR DISC MTG BRACKET

(06-082-008)

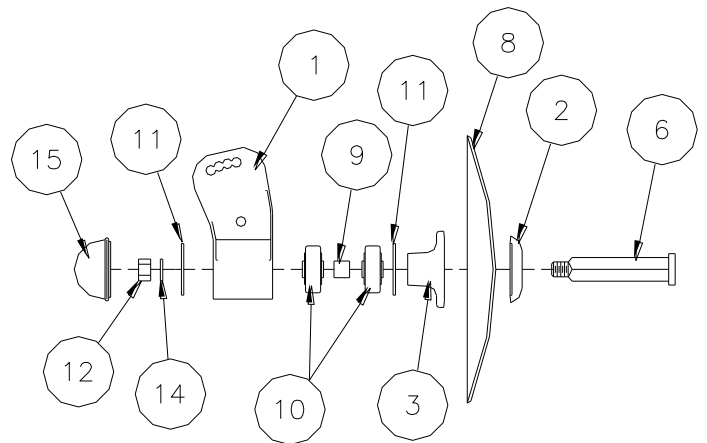


ITEM	PART NO	SERIAL NO OR YR	DESCRIPTION	QTY	
				-081	-008
1B	06-080-088		BRACKET, FRT DISC MNT R.B.P.	1	-
1C	06-080-021		BRACKET, REAR DISC MTG	-	1
2	05-023-031		CAP, TOOL BAR	1	1
3	48-100060		CAPSCREW, 3/4 X 6 1/2 G5 PLT	2	2
4	66-010350		LOCKWASHER, 3/4 PLT	2	2
5	68-010350		HEX NUT, 3/4 PLT	2	2
6	52-050350		CARRIAGE SCREW, 5/8 X 2 1/4 G5	2	2
7	66-010300		LOCKWASHER, 5/8 PLT	2	2
8	68-010300		HEX NUT, 5/8 PLT	2	2
9	62-010250		FLATWASHER, 5/8 PLT	1	1



DISC ASSEMBLY '78
(06-082-043)

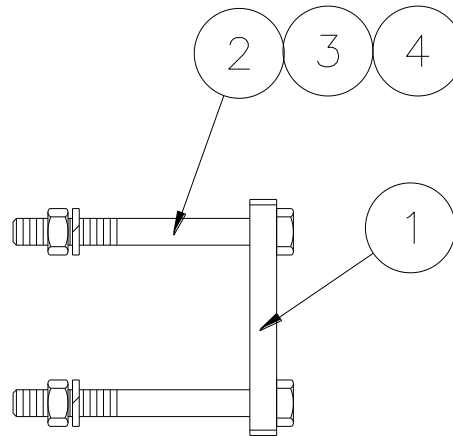
SINGLE DISC ASSEMBLY
(06-082-057)



ITEM	PART NO	SERIAL NO OR YR	DESCRIPTION	QTY	
				-043	-057
1	06-057-013		DISC HUB, '78	1	1
2	06-057-002		PLATE, DISC	1	1
3	06-057-003		CONVEX, DISC SPACER	1	1
4	06-057-004		CONCAVE, DISC SPACER	1	-
5	06-057-005		WASHER, DISC END	1	-
6	06-057-009		AXLE, DISC	1	-
	06-057-014		AXLE, SINGLE DISC	-	1
7	06-050-003		DISC, 18" DIA BEDDER	1	-
8	06-050-004		DISC, 20" DIA BEDDER	1	1
9	06-024-006		SPACER, BEARING	1	1
10	06-051-001		BEARING, 1 1/8" SQ BORE	2	2
11	06-050-001		RETAINING RING, 3 5/32 INT	2	2
12	68-010450		HEX NUT, 1 PLT	1	-
	72-020125		LOCK NUT, 1 G"B" PLT	-	1
13	70-010255		JAM NUT, 1 PLT	1	1
14	66-010450		LOCKWASHER, 1 PLT	1	1
15	06-050-015		HUB CAP	-	1

4 X 4 TOOL BAR CLAMP

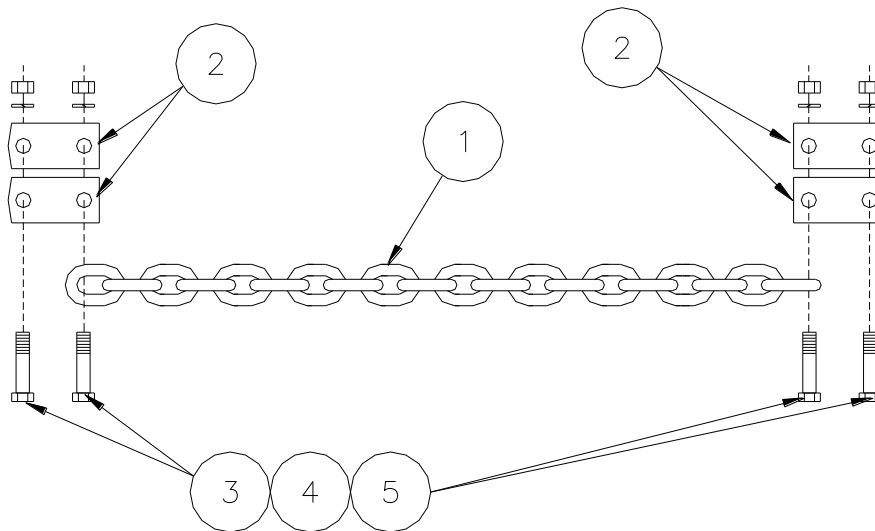
(15-082-012)



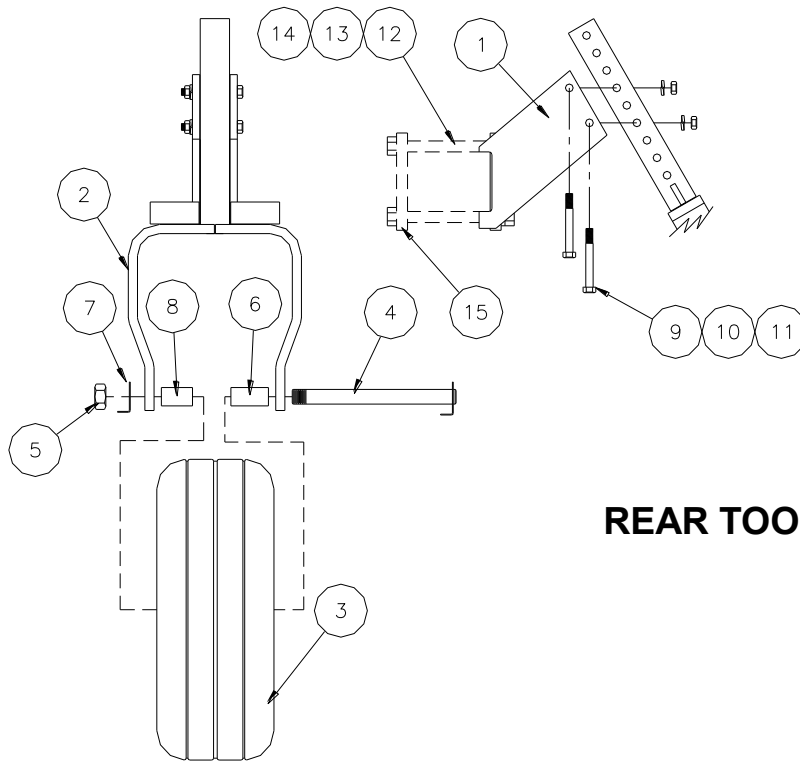
ITEM	PART NO.	SERIAL NO OR YR	DESCRIPTION	QTY
1	05-023-031		CAP, TOOL BAR	2
2	48-100060		CAPSCREW, 3/4 X 6 1/2 G5 PLT	4
3	66-010350		LOCKWASHER, 3/4	4
4	68-010350		HEX NUT, 3/4	4

G2 SUPPORT CHAIN ASSEMBLY

(06-082-175)



ITEM	PART NO	SERIAL NO OR YR	DESCRIPTION	QTY
1	06-050-033		5/16 CHAIN-28 LINKS	1
2	06-023-042		CLEVIS, CHAIN	4
3	48-090450		CAPSCREW, 7/16 X 2 G5 PLT	4
4	66-010200		LOCKWASHER, 7/16 PLT	4
5	68-010200		HEX NUT, 7/16 PLT	4



REAR TOOL BAR GAUGE WHEEL
(06-082-025)

ITEM	PART NO.	SERIAL NO OR YR	DESCRIPTION	QTY
1	06-080-036	(-2000)	GAUGE WHEEL BRACKET	(1)
	06-080-230	(2001-)	BRACKET, GAUGE WHEEL	1
2	06-080-008		REAR GAUGE WHEEL FORK	1
3	03-081-077		8 X 10 WHEEL & HUB ASSY	1
	03-058-007		8 X 10 TUBELESS TIRE W/WHEEL	1
	03-058-008		HUB ASSEMBLY W/CUPS	1
	02-056-007		SEAL (NAT 204029X)	2
	02-051-015		BEARING CONE (L44643)	2
	03-058-009		BOLT, 1/2 X 7/8 NF-20 WHEEL HEAVY	5
	02-050-139		DUTY GREASE #2	0.5
4	03-080-507		8 X 10 WHEEL AXLE	1
5	11-027-014		NUT STOP PLATE	1
6	02-024-005		LONG 8 X 10 GA WHEEL BRG SPACER	1
7	70-010250		HEX JAM NUT, 1" NC	1
8	02-024-004		SPACER, 8 X 10 (SHORT)	1
9	48-090850		CAPSCREW, 1/2 X 4 G5 PLT	2
10	66-010250		LOCKWASHER, 1/2 PLT	2
11	68-010250		HEX NUT, 1/2 PLT	2

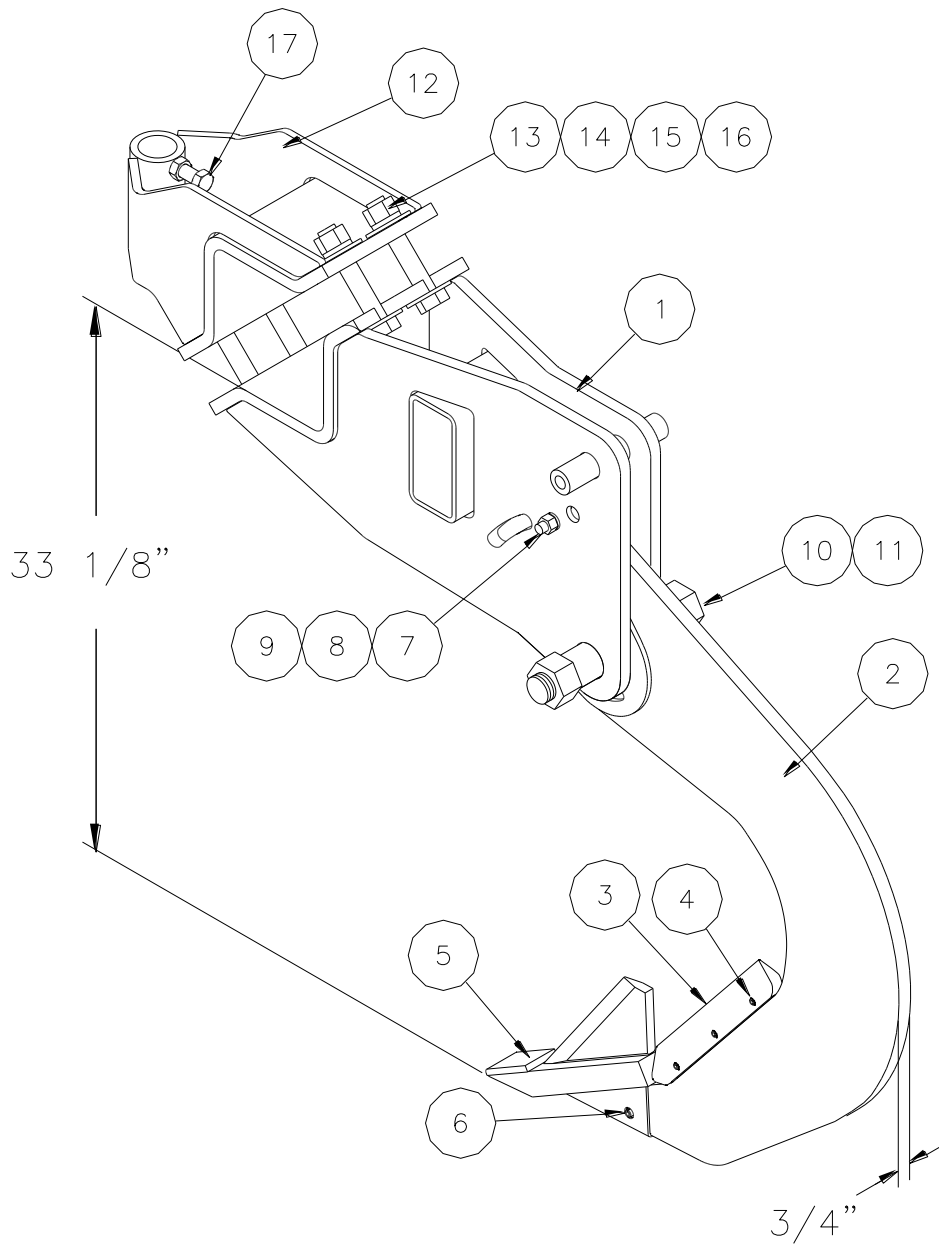
2-ROW REAR GAUGE WHEEL MOUNTING BUNDLE
(06-082-028)

Used Only on 2-Row Ripper-Bedder

ITEM	PART NO.	SERIAL NO OR YR	DESCRIPTION	QTY
12	48-100060		CAPSCREW, 3/4X 6 1/2 G5 PLT	4
13	66-010350		LOCKWASHER, 3/4 PLT	4
14	68-010350		HEX NUT, 3/4 PLT	4
15	05-023-031		TOOL BAR CAP	2

RB WIDE BODY RIPPER

(06-082-172) (3/4")

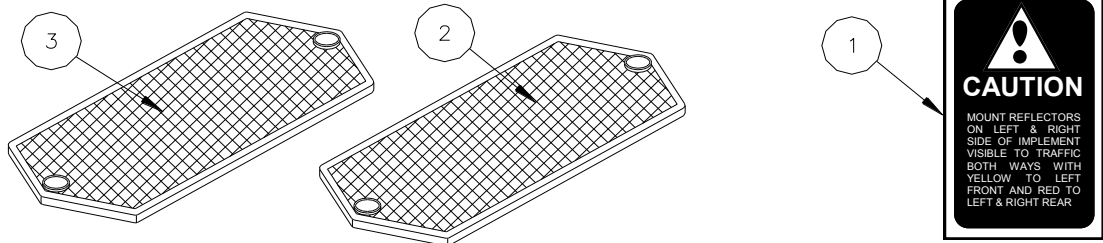


ITEM	PART NO	SERIAL NO OR YR	DESCRIPTION	QTY
1	16-080-320		BRACKET, NSRS SHANK MT	1
2	16-080-291		SHANK, NSRS WIDE BODY	1
3	17-057-004		SHIN, 12" WEAR	1
4	17-050-022		ROLL PIN, 5/16 X 1 3/8	3
5	16-080-282		POINT, 1 3/4 RS SPLITTER W/C	1
6	16-050-020		ROLL PIN, 3/8 X 1 1/4	1
7	48-090750		CAPSCREW, 1/2 X 3 1/2 G5	1

ITEM	PART NO	SERIAL NO OR YR	DESCRIPTION	QTY
8	68-010250		HEX NUT, 1/2 PLT	1
9	66-010250		LOCKWASHER, 1/2 PLT	1
10	48-100675		CAPSCREW, 1 X 7 1/2 G5 P	1
11	72-020125		LOCKNUT, 1 STOVER G"B" P	1
12	16-080-295		BRKT, NSRS SWIVEL CLTR	1
13	48-100200		CAPSCREW, 7/8 X 5	4
14	68-010406		HEX NUT, 7/8 G8 PLT	4
15	66-010400		LOCKWASHER, 7/8 PLT	4
16	62-020042		FLATWASHER, 7/8 SAE PLT	8
17	54-010300		SETSCREW, 5/8 X 1 1/2 G5 P	2

SAFETY REFLECTORS

(04-082-112)



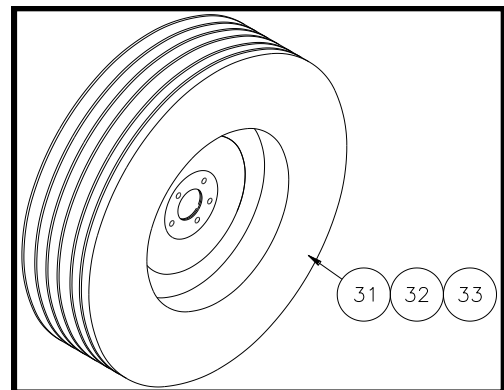
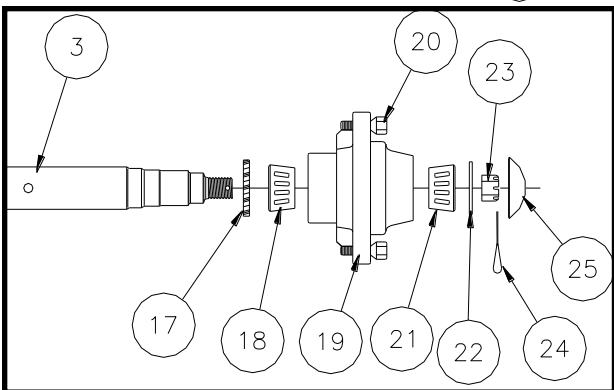
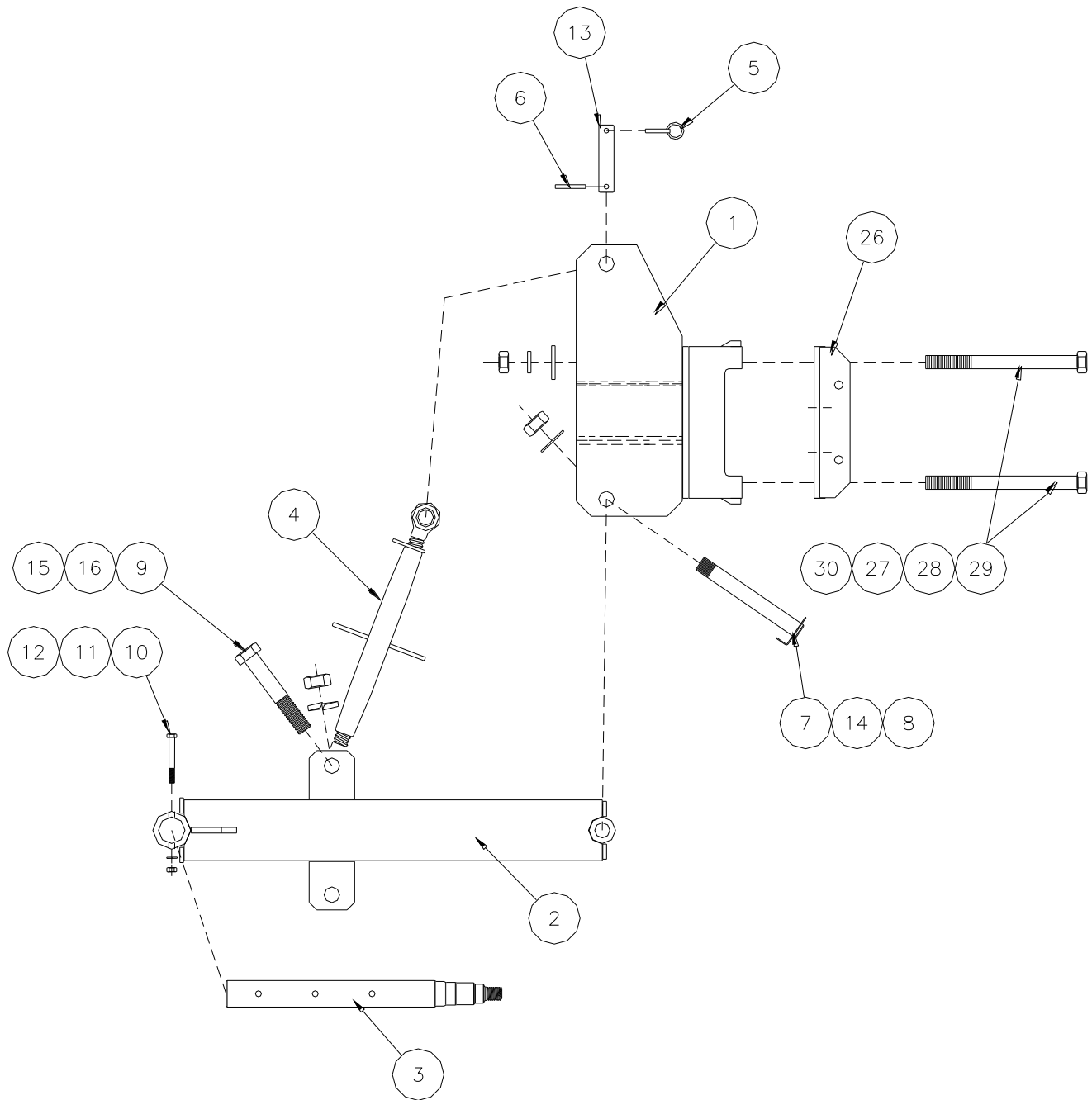
ITEM	PART NO.	SERIAL NO OR YR	DESCRIPTION	QTY
1	03-050-071		DECAL, REFLECTOR CAUTION	1
2	03-050-069		REFLECTOR, AMBER	1
3	03-050-070		REFLECTOR, RED	2

OPTIONAL EQUIPMENT

LT & RT GAUGE WHEEL

(55-082-005)

(55-082-006)



ITEM	PART NO	SERIAL NO OR YR	DESCRIPTION	QTY	
				LT	RT
1	55-080-009		BRACKET, GAUGE WHEEL	1	1
2	55-080-010		ARM, GAUGE WHEEL	1	1
3	55-026-003		SPINDLE, Q-888 SINGLE	1	1
4	02-050-134		TURNBUCKLE, CAT II	1	1
5	02-050-062		LYNCH PIN, 1/4 X 1 5/8	1	1
6	03-050-078		ROLL PIN, 5/16 X 1 3/4	1	1
7	03-080-508		AXLE, 5 X 8 WHEEL	1	1
8	72-040100		JAM LOCKNUT, 1" NC	1	1
9	48-100530		CAPSCREW , 1 X 4	1	1
10	48-090250		CAPSCREW, 3/8 X 3	2	2
11	66-010150		LOCKWASHER, 3/8	2	2
12	68-010150		HEX NUT, 3/8	2	2
13	04-026-059		PIN, GA WHL LINK	1	1
14	62-010370		FLATWASHER, 1 STD	1	1
15	68-010450		HEX NUT, 1 PLT	1	1
16	66-010450		LOCKWASHER, 1" PLT	1	1
17	02-056-011		SEAL	1	1
18	02-051-041		CONE, INNER BEARING	1	1
19	02-058-033		HUB, Q888	1	1
20	02-058-004		BOLT, 1/2 X 1 1/4	6	6
21	02-051-006		CONE, OUTER BEARING	1	1
22	02-050-019		WASHER, 15/16 ID X .160 THK	1	1
23	68-030050		SLOTTED NUT, 7/8 NF	1	1
24	76-010050		COTTER PIN, 5/32 X 1-1/4 EXT	1	1
25	02-058-005		CAP, HUB	1	1
26	06-080-121		CAP, 2" TOOL BAR	2	2
27	62-010350		FLATWASHER, 7/8 STD	4	4
28	66-010400		LOCKWASHER, 7/8 PLT	4	4
29	68-010400		HEX NUT, 7/8 PLT	4	4
30	48-100400		CAPSCREW, 7/8 X 9 1/2	4	4

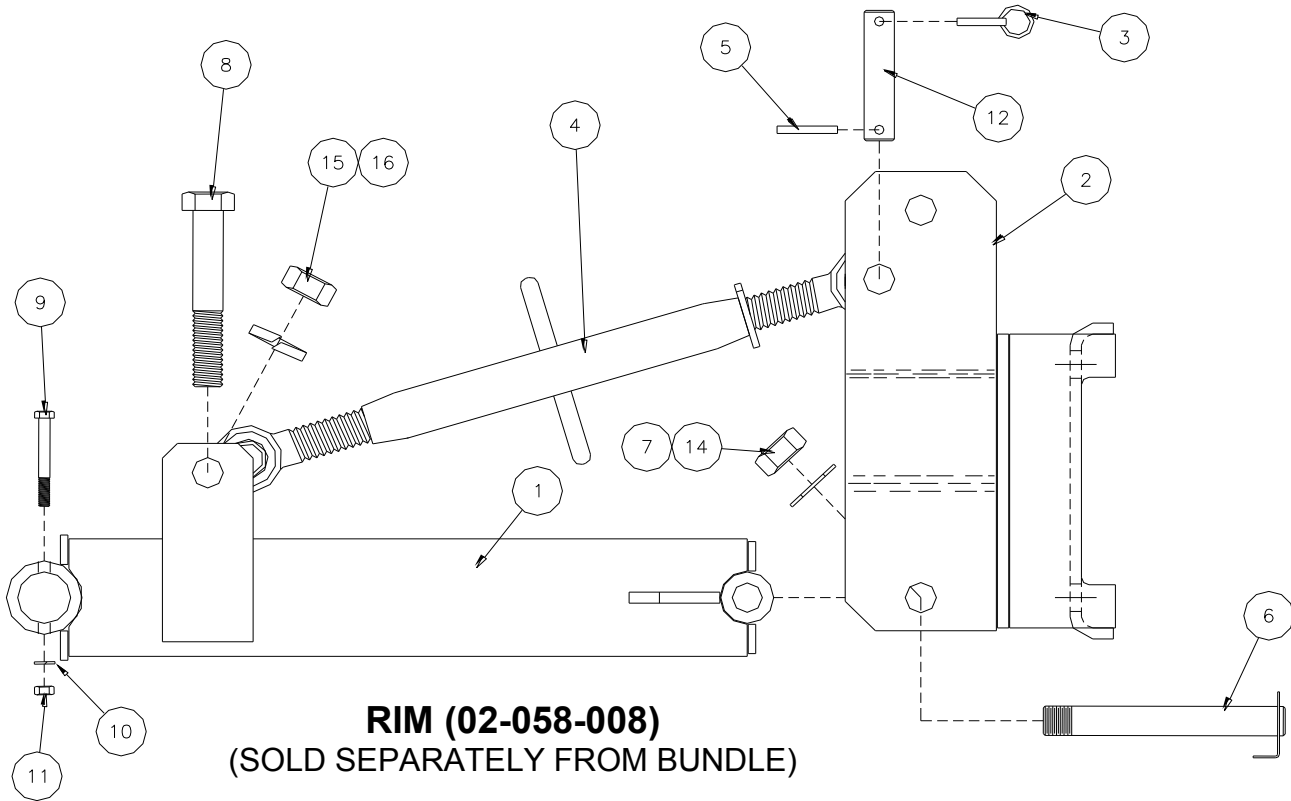
TIRE AND RIM ASSEMBLY (9.5L-15)

(55-082-026)

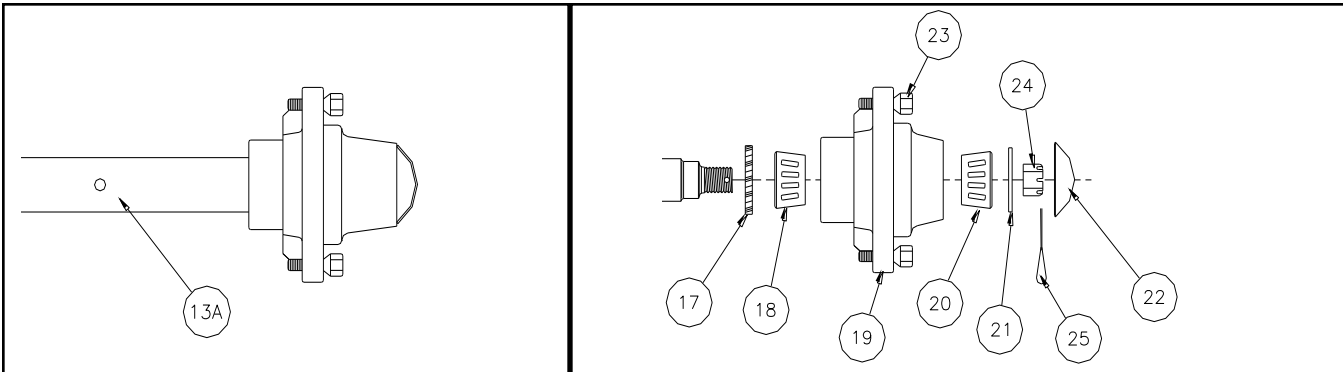
ITEM	PART NO	SERIAL NO OR YR	DESCRIPTION	QTY
31	42-058-005		TIRE (9.5L-15SL)	1
32	02-058-008		WHEEL, 15 X 6	1
33	18-050-021		STEM, VALVE	1

7" TURNBUCKLE GAUGE WHEEL

(04-082-293)(SINGLE)



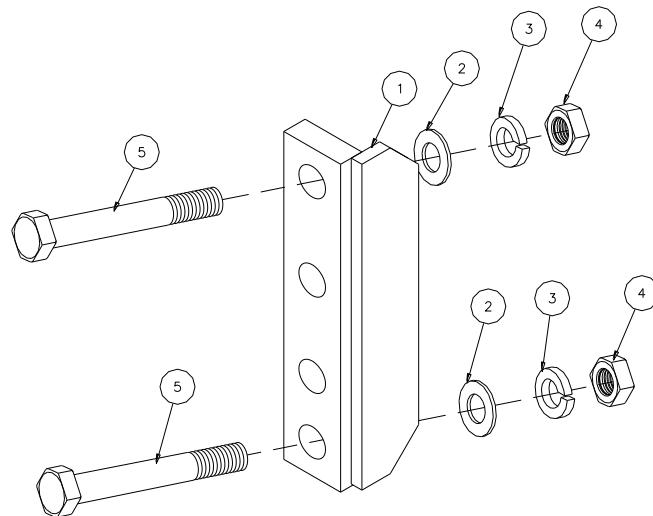
RIM (02-058-008)
(SOLD SEPARATELY FROM BUNDLE)



ITEM	PART NO.	SERIAL NO OR YR	DESCRIPTION	QTY
1	04-080-295		ARM, GAUGE WHEEL	1
2	04-080-296		BRACKET, GAUGE WHEEL	1
3	02-050-062		PIN, 1/4 X 1 5/8 LYNCH	1
4	02-050-162		TURNBUCKLE, CAT II	1
5	03-050-078		PIN, 5/16 X 1 3/4 ROLL	1
6	03-080-508		AXLE, 5 X 8 WHEEL	1
7	72-040100		JAM LOCKNUT, 1 NC HEX	1
8	48-100530		CAPSCREW, 1 X 4 G5 PLT	1
9	48-090250		CAPSCREW, 3/8 X 3 G5 PLT	1
10	66-010150		LOCKWASHER, 3/8 PLT	1
11	68-010150		HEX NUT, 3/8 PLT	1

ITEM	PART NO.	SERIAL NO OR YR	DESCRIPTION	TYP
12	04-026-059		LINK PIN, GAUGE WHEEL	1
13A	02-058-040		ASSY, Q888 HUB & 10 1/2 SPINDLE	1
14	62-010370		FLATWASHER, 1 STD PLT	1
15	68-010450		HEX NUT, 1 PLT	1
16	66-010450		LOCKWASHER, 1 PLT	1
17	02-056-011		SEAL	1
18	02-051-041		CONE, INNER BEARING	1
19	02-058-033		HUB, Q888	1
20	02-051-006		CONE, OUTER BEARING	1
21	02-050-019		WASHER, 15/16 ID X .160 THICK	1
22	02-058-005		CAP, HUB	1
23	02-058-004		WHEEL BOLT, 1/2 X 1 1/4 NF 20	6
24	68-030050		SLOTTED NUT, 7/8 NF	1
25	76-010050		COTTER PIN, 5/32 X 1 1/4	1

7 X 4 MOUNTING HARDWARE
(16-082-142)

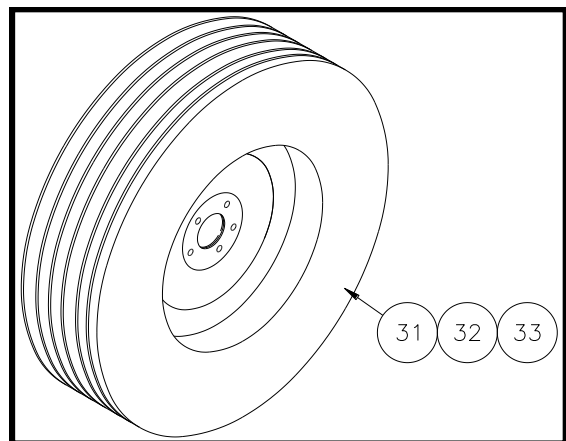
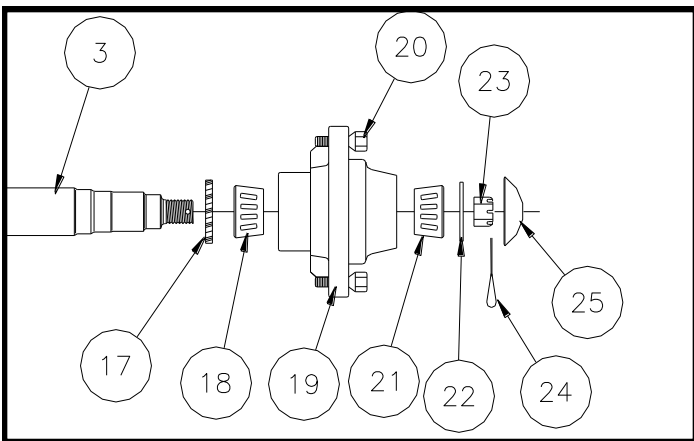
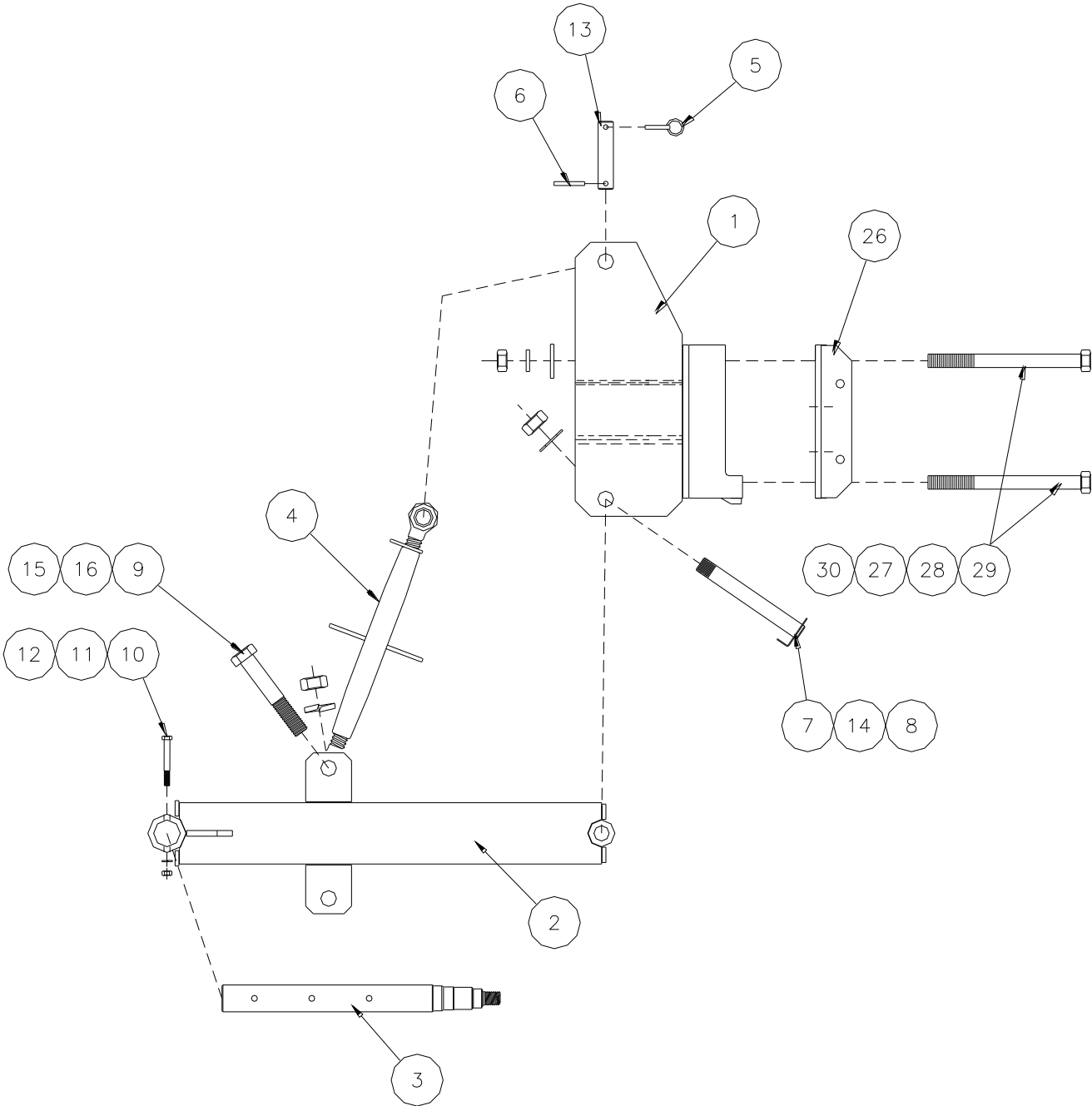


ITEM	PART NO.	SERIAL NO OR YR	DESCRIPTION	QTY
1	06-080-121		CAP, 2" TOOL BAR	1
2	62-010350		FLATWASHER, 7/8 PLT	2
3	66-010400		LOCKWASHER, 7/8 PLT	2
4	68-010400		HEX NUT, 7/8 PLT	2
5	48-100300		CAPSCREW, 7/8 X 6 1/2 G5 PLT	2

LT & RT GAUGE WHEEL (OCF)

(55-082-023)

(55-082-024)



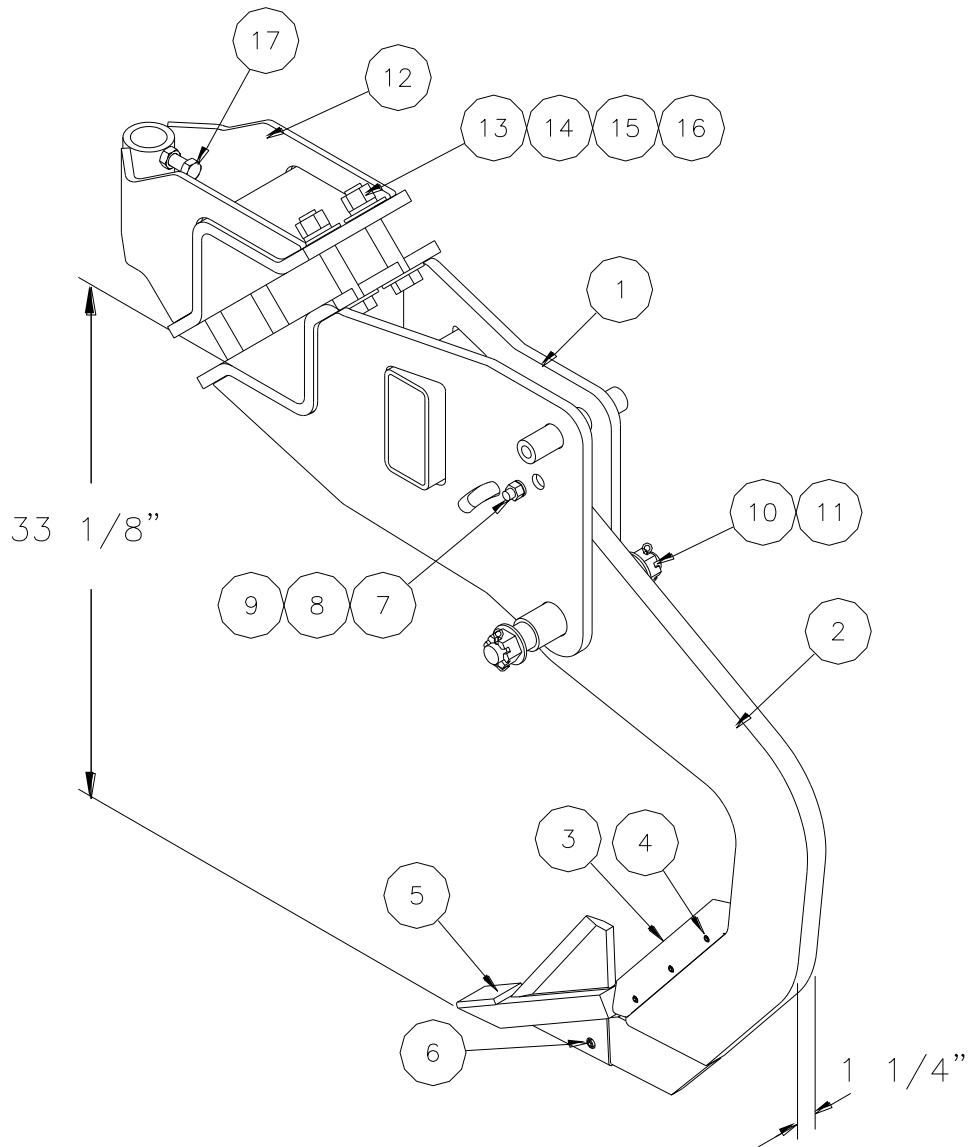
ITEM	PART NO	SERIAL NO OR YR	DESCRIPTION	QTY	
				LT	RT
1	55-080-030		BRACKET, OCF GAUGE WHEEL	1	1
2	55-080-010		ARM, GAUGE WHEEL	1	1
3	55-026-003		SPINDLE, Q-888 SINGLE	1	1
4	02-050-134		TURNBUCKLE, CAT II	1	1
5	02-050-062		LYNCH PIN, 1/4 X 1 5/8	1	1
6	03-050-078		ROLL PIN, 5/16 X 1 3/4	1	1
7	03-080-508		AXLE, 5 X 8 WHEEL	1	1
8	72-040100		JAM LOCKNUT, 1" NC	1	1
9	48-100530		CAPSCREW , 1 X 4	1	1
10	48-090250		CAPSCREW, 3/8 X 3	2	2
11	66-010150		LOCKWASHER, 3/8	2	2
12	68-010150		HEX NUT, 3/8	2	2
13	04-026-059		PIN, GA WHL LINK	1	1
14	62-010370		FLATWASHER, 1 STD	1	1
15	68-010450		HEX NUT, 1 PLT	1	1
16	66-010450		LOCKWASHER, 1" PLT	1	1
17	02-056-011		SEAL	1	1
18	02-051-041		CONE, INNER BEARING	1	1
19	02-058-033		HUB, Q888	1	1
20	02-058-004		BOLT, 1/2 X 1 1/4	6	6
21	02-051-006		CONE, OUTER BEARING	1	1
22	02-050-019		WASHER, 15/16 ID X .160 THK	1	1
23	68-030050		SLOTTED NUT, 7/8 NF	1	1
24	76-010050		COTTER PIN, 5/32 X 1-1/4 EXT	1	1
25	02-058-005		CAP, HUB	1	1
26	06-080-121		CAP, 2" TOOL BAR	2	2
27	62-010350		FLATWASHER, 7/8 STD	4	4
28	66-010400		LOCKWASHER, 7/8 PLT	4	4
29	68-010400		HEX NUT, 7/8 PLT	4	4
30	48-100450		CAPSCREW, 7/8 X 10	4	4

TIRE AND RIM ASSEMBLY (9.5L-15)
(55-082-026)

ITEM	PART NO	SERIAL NO OR YR	DESCRIPTION	QTY
31	42-058-005		TIRE (9.5L-15SL)	1
32	02-058-008		WHEEL, 15 X 6	1
33	18-050-021		STEM, VALVE	1

RB WIDE BODY RIPPER

(06-082-173) (1 1/4")



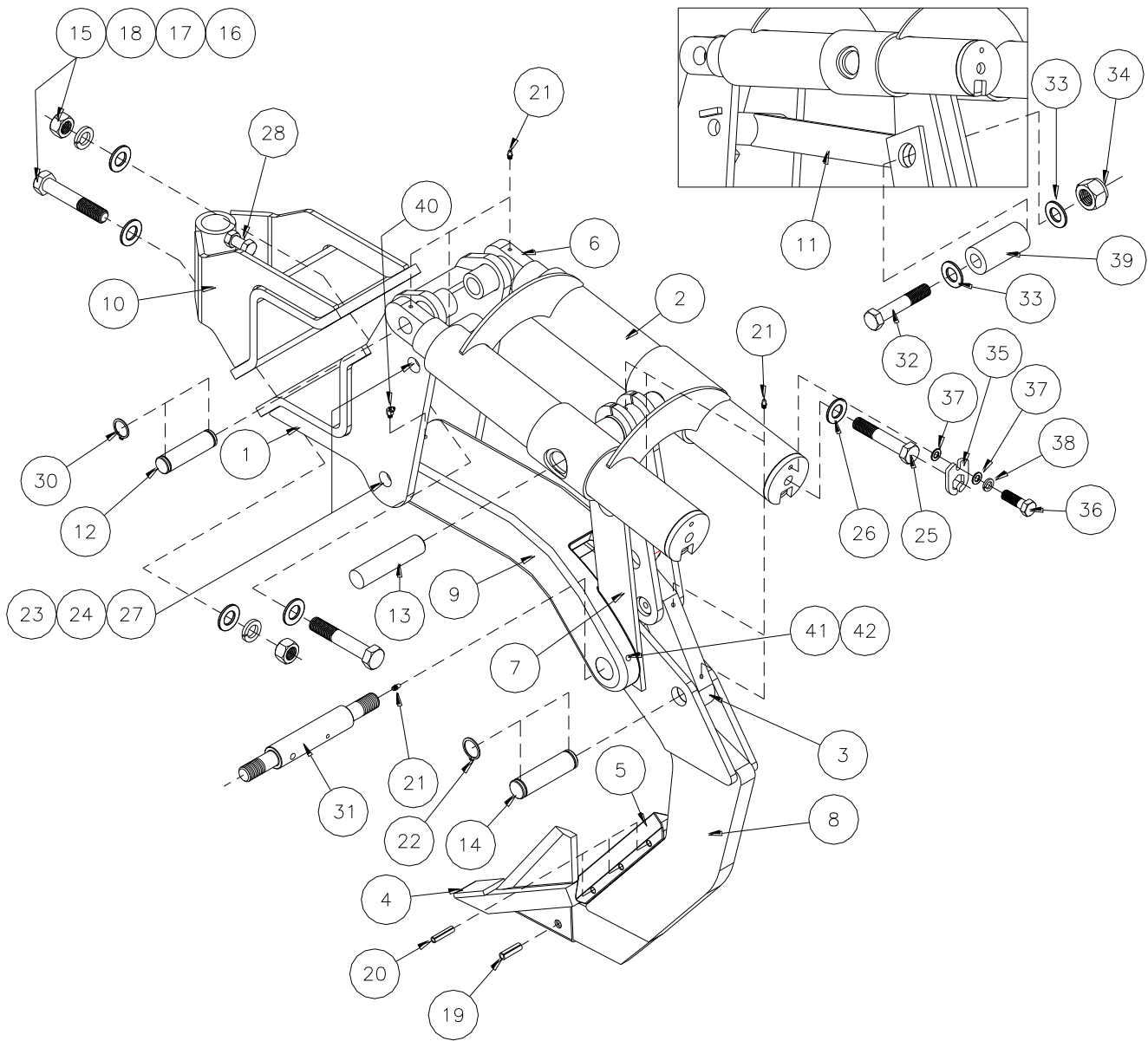
ITEM	PART NO	SERIAL NO OR YR	DESCRIPTION	QTY
1	16-080-320		BRACKET, NSRS SHANK MT	1
2	16-080-292		SHANK, NSRS RESIDUE	1
3	17-057-004		SHIN, 12" WEAR	1
4	17-050-022		ROLL PIN, 5/16 X 1 3/8	3
5	16-080-282		POINT, 1 3/4 RS SPLITTER W/C	1
6	16-050-020		ROLL PIN, 3/8 X 1 1/4	1
7	48-090750		CAPSCREW, 1/2 X 3 1/2 G5	1
8	68-010250		HEX NUT, 1/2 PLT	1

ITEM	PART NO	SERIAL NO OR YR	DESCRIPTION	QTY
9	66-010250		LOCKWASHER, 1/2 PLT	1
10	48-100675		CAPSCREW, 1 X 7 1/2 G5 P	1
11	72-020125		LOCKNUT, 1 STOVER G"B" P	1
12	16-080-295		BRKT, NSRS SWIVEL CLTR	1
13	48-100200		CAPSCREW, 7/8 X 5	4
14	68-010406		HEX NUT, 7/8 G8 PLT	4
15	66-010400		LOCKWASHER, 7/8 PLT	4
16	62-020042		FLATWASHER, 7/8 SAE PLT	8
17	54-010300		SETSCREW, 5/8 X 1 1/2 G5 P	2

RESET ON THE GO RIPPER SHANKS

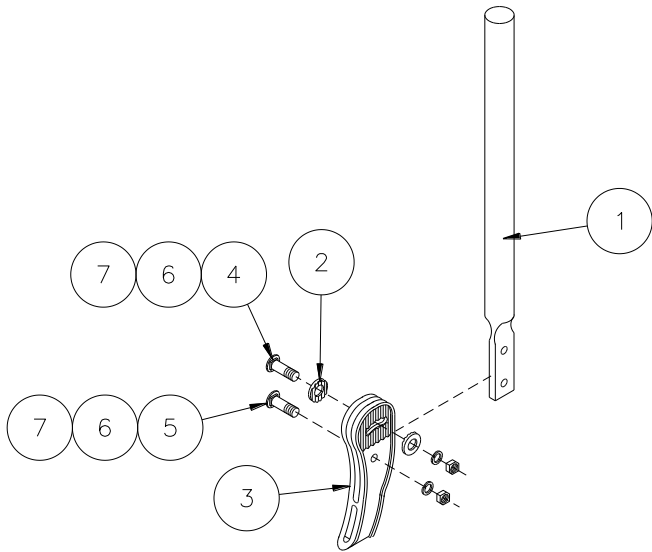
(16-082-190) (3/4")

(16-082-191) (1 1/4")



ITEM	PART NO	SERIAL NO OR YR	DESCRIPTION	QTY	
				-190	-191
1	16-080-274		MOUNT, SHANK	1	1
2	16-080-284		TUBE, SPRING	1	1
3	16-080-283		ASSY, TRIP LINKAGE	1	1
4	16-080-282		POINT, 1 3/4 RS SPLITTER W/CAP	1	1
5	17-057-004		SHIN, 12" WEAR	1	1
6	16-080-363		SPRING, RESET	2	2
7	16-027-359		PLATE, REAR LINK	2	2
8	16-080-319		SHANK, WIDE BODY RESET	1	-
	16-080-318		SHANK, RESIDUE RESET	-	1

ITEM	PART NO	SERIAL NO OR YR	DESCRIPTION	QTY	
				-190	-191
9	16-057-023		ARM, LOWER LINKAGE	1	1
10	16-080-295		BRACKET, NSRS SWIVEL	1	1
11	16-080-336		LINKAGE, RESET UPPER	1	1
12	16-026-083		PIN, FRONT SPRING	2	2
13	16-026-065		PIN, SPRING	1	1
14	16-026-068		PIN, LOWER	1	1
15	48-100200		CAPSCREW, 7/8 X 5 G5 PLT	4	4
16	68-010406		HEX NUT, 7/8 G8 PLT	4	4
17	66-010400		LOCKWASHER, 7/8 PLT	4	4
18	62-020042		FLATWASHER, 7/8 SAE PLT	8	8
19	16-050-020		ROLL PIN, 3/8 X 1 1/4 PLT	1	1
20	17-050-022		ROLL PIN, 5/16 X 1 3/8 PLN	3	3
21	02-050-005		STRAIGHT FITTING, 1/4-28	8	8
22	16-050-056		SNAP RING, 1 1/4 SHAFT	2	2
23	72-020125		LOCKNUT, 1" NC STOVER G"B" P	2	2
24	16-050-074		CAPSCREW, 1 X 7 1/2 G5 SPE	2	2
25	48-091195		CAPSCREW, 5/8 X 6 NF G8 PLN	2	2
26	04-050-013		FLATWASHER, 5/8 HARDENED	2	2
27	16-024-207		SLEEVE, RESET LOWER	2	2
28	54-010300		SETSCREW, 5/8 X 1 1/2 SQ HD	2	2
30	16-050-057		SNAP RING, 1 1/8 SHAFT	4	4
31	16-026-080		PIN, SHANK PIVOT	1	1
32	48-091450		CAPSCREW, 3/4 X 4 1/2 G5 PLT	1	1
33	62-010300		FLATWASHER, 3/4 STD PLT	2	2
34	72-010150		LOCKNUT, 3/4 NC STOVER G"B"	1	1
35	16-027-151		BOLT RETAINER	2	2
36	48-090036		CAPSCREW, 5/16 X 1 G5 PLT	2	2
37	62-010050		FLATWASHER, 5/16 SAE PLT	2	2
38	62-010100		LOCKWASHER, 5/16 REG PLT	2	2
39	16-026-082		SLEEVE, RESET LOWER LINK	1	1
40	02-050-017		FITTING, 1/4-28 45°	1	1
41	48-090318		CAPSCREW, 3/8 X 4 G8 PLT	1	1
42	72-010050		LOCKNUT, 3/8 STOVER	1	1

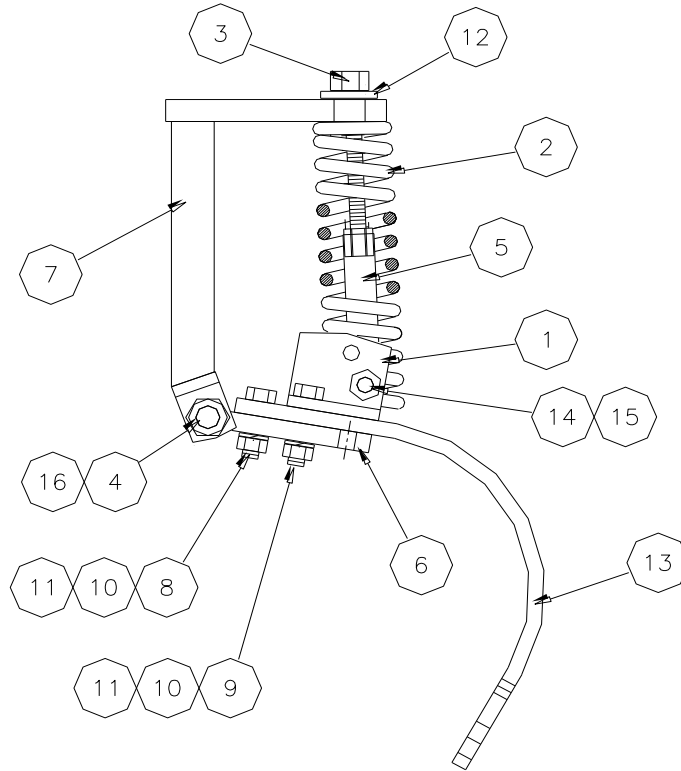


RIGID SHANK
(02-082-027)

ITEM	PART NO	SERIAL NO OR YR	DESCRIPTION	QTY
1	02-057-002		STANDARD, 1 3/8 DIA	1
2	04-057-007		WASHER, RACHET	2
3	04-057-005		FOOT, ADJUSTABLE PLOW	1
4	52-050115		CARRIAGE SCREW, 7/16 X 2 1/2 G5 P	1
5	52-050110		CARRIAGE SCREW, 7/16 X 2 G5 P	1
6	68-020050		HEX NUT, 7/16 HEAVT PLT	2
7	66-010200		LOCKWASHER, 7/16 PLT	2

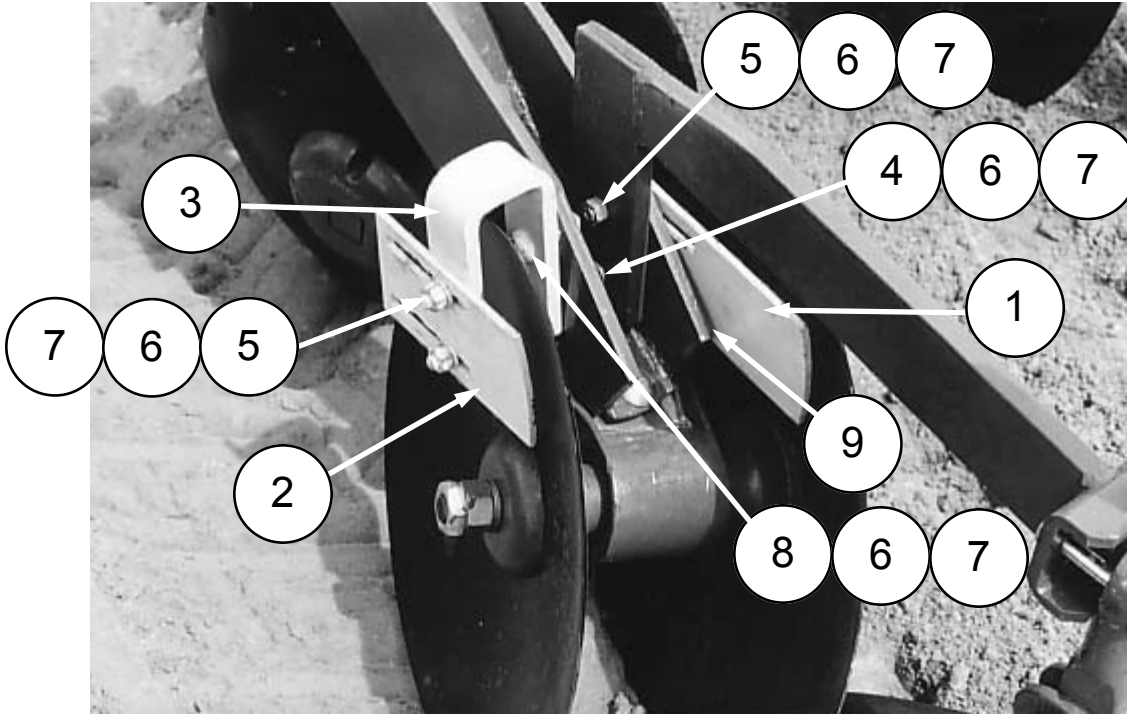
1/2 X 1 3/4 COMPRESSION SPRING PLOW

(04-082-236)



ITEM	PART NO.	SERIAL NO OR YR	DESCRIPTION	QTY
1	04-023-336		ADJ. SPRING BRACKET	1
2	17-050-025		SPRING, 2 1/2 X 9 1/2 COMP.	1
3	04-050-073		ADJUSTMENT SCREW (SPECIAL)	1
4	04-050-074		SPRING PLOW PIVOT BOLT	1
5	04-080-111		ADJUSTMENT BAR	1
6	04-080-112		PIVOT BAR	1
7	04-080-113		SPRING PLOW STANDARD	1
8	48-090596		CAPSCREW, 1/2 X 1 3/4 G5 PLT	1
9	48-090625		CAPSCREW, 1/2 X 2 1/2 G5 PLT	1
10	66-010250		LOCKWASHER, 1/2 PLT	2
11	68-010250		HEX NUT, 1/2 PLT	2
12	62-010200		FLATWASHER, 1/ 2 PLT	1
13	04-050-122		PLOW SHANK, H.D.	1
14	48-090850		CAPSCREW, 1/2 X 4 G5 PLT	1
15	72-010100		LOCKNUT, 1/2 G"B" PLT	1
16	72-030050		LOCKNUT, 3/4 STOVER THIN COLLAR	1

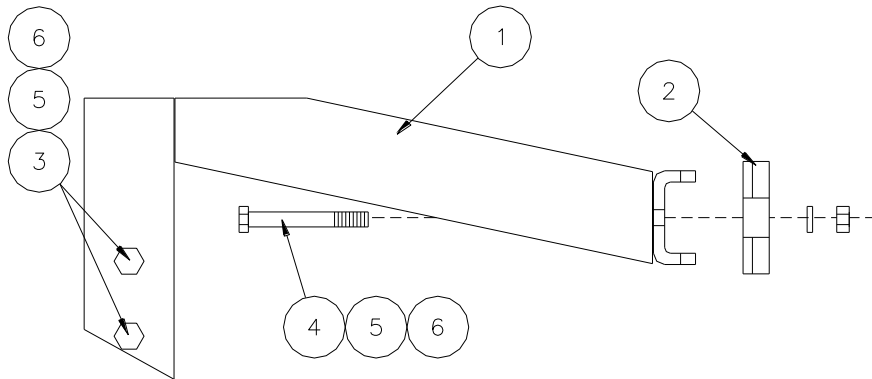
DISC SCRAPER KIT
(06-082-015) 1 REQ'D/ROW



ITEM	PART NO	SERIAL NO OR YR	DESCRIPTION	QTY
1	06-023-050		20" DISC SCRAPER	2
2	06-027-004		18" DISC SCRAPER	2
3	06-023-049		SCRAPER SUPPORT	2
4	52-050150		CARRIAGE SCREW, 1/2 X 1 3/4 G5 PLT	4
5	52-050140		CARRIAGE SCREW, 1/2 X 1 1/2 G5 PLT	6
6	66-010250		LOCKWASHER, 1/2 PLT	12
7	68-010250		HEX NUT, 1/2 PLT	12
8	52-050178		CARRIAGE SCREW, 1/2 X 2 G2 PLT	2
9	64-010050		BEVEL WASHER, 1/2" TYPE "A"	4

'84 BALK PLOW

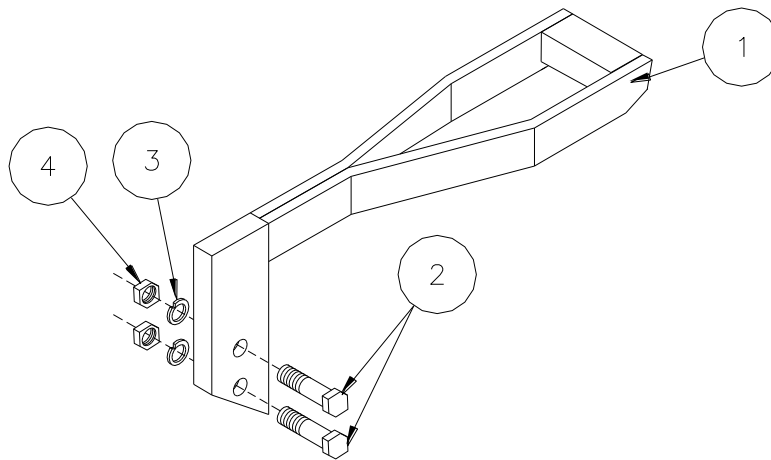
(06-082-083)



ITEM	PART NO	SERIAL NO OR YR	DESCRIPTION	QTY
1	06-080-097		BRACKET, BALK PLOW	1
2	04-057-012		CAP, SHANK	1
3	48-090600		CAPSCREW, 1/2 X 2 G5 PLT	2
4	48-090850		CAPSCREW, 1/2 X 4 G5 PLT	2
5	66-010250		LOCKWASHER, 1/2 PLT	4
6	68-010250		HEX NUT, 1/2 PLT	4

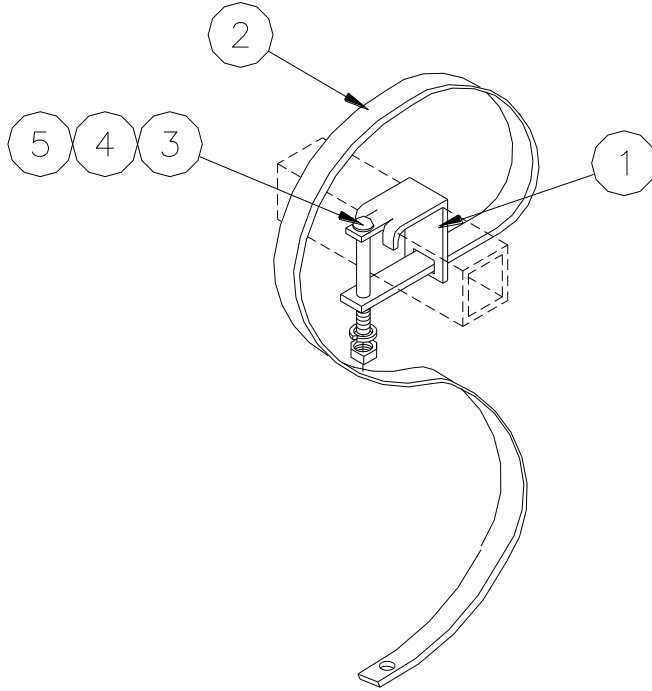
S-TINE BALK PLOW BRACKET

(06-082-101)



ITEM	PART NO	SERIAL NO OR YR	DESCRIPTION	QTY
1	06-080-130		BRACKET, BALK PLOW (S-TINE)	1
3	48-090600		CAPSCREW, 1/2 X 2 G5 PLT	2
5	66-010250		LOCKWASHER, 1/2 PLT	2
6	68-010250		HEX NUT, 1/2 PLT	2

2 X 2 HIGH CLEARANCE S-TINE
(21-082-043)



ITEM	PART NO.	SERIAL NO OR YR	DESCRIPTION	QTY
1	21-023-104		"S" TINE CLAMP, 1/2" (2 X 2)	1
2	04-050-117		"S" TINE, 1/2 X 1 1/4 HIGH CL	1
3	52-050275		CARRIAGE SCREW, 1/2 X 3 1/2	1
4	66-010250		LOCKWASHER, 1/2 PLT	1
5	68-010250		HEX NUT, 1/2 PLT	1

The following is a list of serial numbers issued to our machines at the beginning of each year. To determine when a unit was made, find the range within which the particular serial number falls. It would have been produced between January 1 to December 31 of that year.

YEAR	SERIAL NUMBERS
1985	27986-29695
1986	29696-31095
1987	31096-33234
1988	33235-35548
1989	35549-38496
1990	38497-41771
1991	41772-44466
1992	44467-47001
1993	47002-48750
1994	48751-51549
1995	51551-54262
1996	54263-56661
1997	56662-59465
1998	59466-62097
1999	62098-63986
2000	63987-65692
2001	65693-67340
2002	67341-68699
2003	68700-70482
2004	70483-72646
2005	72647-74866
2006	74867-76368
2007	76369-77883
2008	77884-79891
2009	79892-80944
2010	80945-81775
2011	81776-83453
2012	83454-85092
2013	85093-86418
2014	86419-87790
2015	87791-89096
2016	89097-



DEPENDABLE EQUIPMENT FOR PROGRESSIVE FARMING

Visit us at www.kelleymfg.com



MADE IN AMERICA

KELLEY MANUFACTURING CO.

80 Vernon Drive / Zip 31794
P.O. Drawer 1467 / Zip 31793
Tifton, GA

Tel: 229-382-9393
Toll Free: 1-800-444-5449
Fax: 229-382-5259
Email Address: info@kelleymfg.com