



FARM MACHINERY

Parts & Maintenance Manual

INCORPORATOR

s/n xxxx
model: xxxx-xx

FAILURE TO UNDERSTAND AND FOLLOW THESE SAFETY INSTRUCTIONS MAY RESULT IN SERIOUS PERSONAL INJURY.

1. Do not allow anyone to operate the Incorporator without proper training in both its operation and these safety precautions.
2. Use extreme caution when hitching the Incorporator to the tractor. Do not stand between the tractor and the Incorporator when the tractor driver is operating the tractor.
3. Stay clear of the rotating P.T.O. driveline when tractor is running. Never operate the P.T.O. without the safety shields in place.
4. Do not walk or stand in front of the Incorporator when the tractor is moving.
5. Support the Incorporator before working under it. It is preferred that heavy steel stands are used to support the Incorporator. If stands are not available, large wooden blocks may be used. Use wooden blocks of sufficient size to hold the Incorporator at the desired height. **Never stack blocks on top of each other to gain more height off the ground. Stacked blocks may not be stable and the weight of the Incorporator may cause the blocks to shift and allow the Incorporator to fall causing serious personal injury.**

To properly support the Incorporator, lift it with the tractor hitch, place the stands or large wooden blocks under the outside flat runners/pontoons and lower the Incorporator onto the stands or blocks. Place the tractor transmission into Park and turn off the tractor engine. Check to make sure the Incorporator is securely supported by the stands or blocks.

**WARNING**

After initial installation, be sure to cycle the three point hitch from the fully raised position to the fully lowered position to verify that the P.T.O. driveline does not bottom out or pull out.

Daily or every 8 hours of operation:

1. Lift the Incorporator and inspect for any loose or broken parts. Ensure that all the rotors and/or blades are securely fastened and that the blades are not excessively worn.
2. Grease the upper drive shaft bearings and driveline yokes. Use one pump of grease per bearing.
3. Grease the lower tiller shaft carrier bearings. Use one pump of grease per bearing.
4. Make a visual check of the T-box for any oil leaks. If leaks are evident, repair them and check the oil level. Fill with 80-90 weight oil to the lower drain plug.
5. Grease universal joints on P.T.O. driveline. Use one pump of grease per joint.
6. Inspect P.T.O. shields for damage and freedom of rotation. Replace any shields that do not rotate freely.
7. Check the connection of the P.T.O. to the T-box input shaft to ensure it is securely fastened.
8. Check oil levels in chain boxes. Fill with 80-90 weight oil to the lower drain plug.
9. Check the chain tension. The chain should have no more than 1/4" deflection. Be careful not to overtighten. Note: Loosen the two nuts on the outside of the chain box housing before adjusting the tensioning bolt. Re-tighten these two nuts after the chain has been tensioned.

Weekly or every 40 hours of operation:

1. Grease the P.T.O. driveline shaft.
2. Inspect the wear plates for excessive wear and replace as necessary.

Annually:

1. Change the oil in the T-box.
2. Inspect the tiller shafts for cracks.
3. Inspect all bearings for excessive wear and replace as necessary.
4. Inspect the P.T.O. shaft and universal joints for wear.
5. Change the oil in the chain boxes.

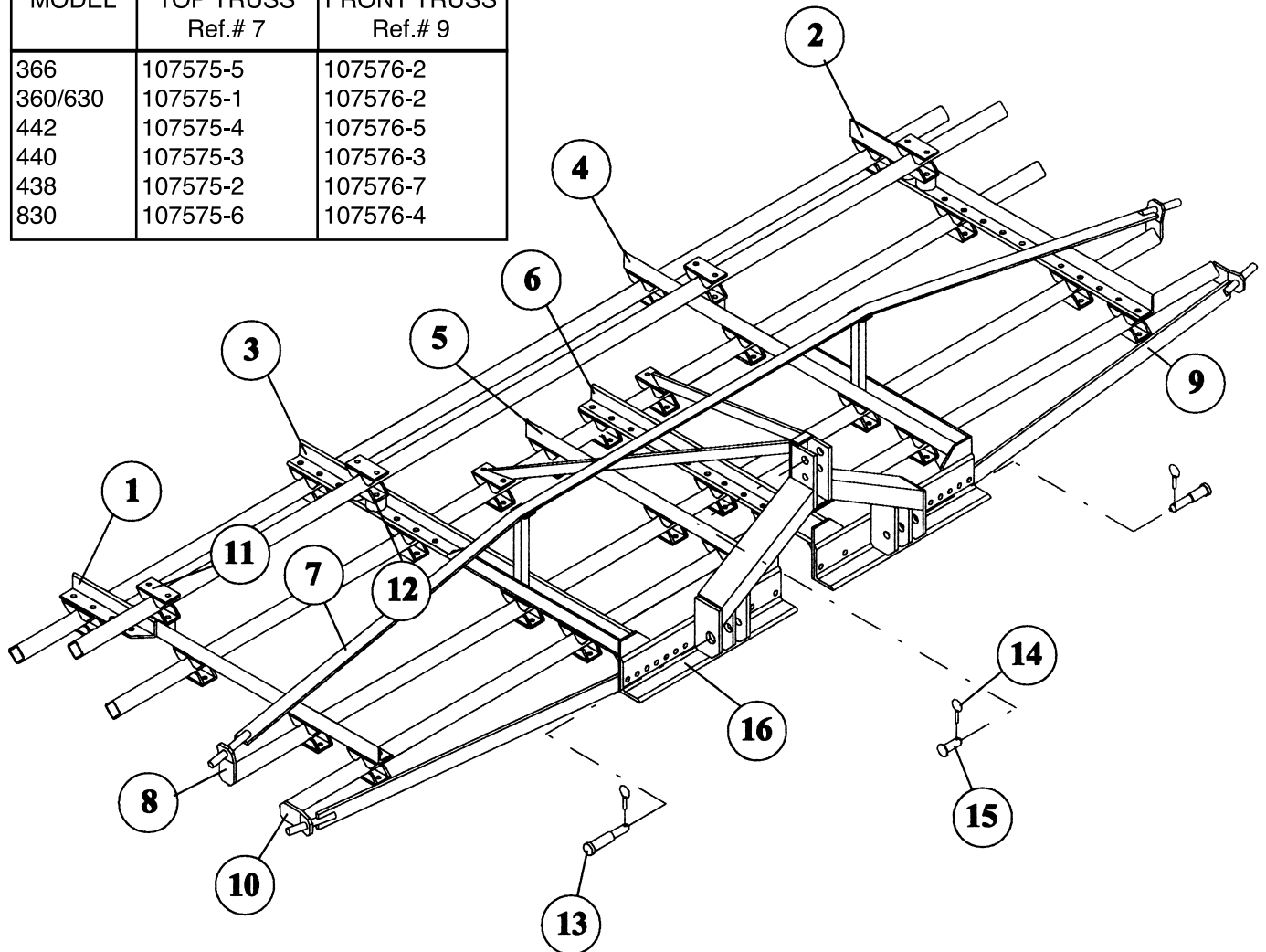
PARTS CATALOG

TABLE OF CONTENTS

| | PAGES |
|--|----------|
| Top Frame Assembly | 5 |
| Chain Box | 6 to 7 |
| T-Box - Keyed Input Shaft | 8 to 9 |
| T-Box - Splined Input Shaft | 10 |
| Drive Assemblies including Shafts & Covers | 11 to 14 |
| Driveline | 15 |
| Rotor Assemblies | 16 |
| I-Blade Tiller Assemblies | 17 |
| Hoods (Pontoon & Flat Runner Style Incorporator) | 18 to 20 |
| Rear Covers (Rigid, Spring & Rubber styles) | 21 to 24 |
| Pontoons | 25 |
| Flat Runners | 26 |
| Plant Tunnel Assemblies | 27 |
| Furrowing Out Shovels | 28 |

| TOP FRAME ASSEMBLY | | | |
|--------------------|-------------|------------|---|
| Ref.# | Part Number | Qty. Req'd | Description |
| 1 | 61044 | 1 | ANGLE FRAME WELDMENT,RH,with Offset |
| 2 | 61045 | 1 | ANGLE FRAME WELDMENT,LH,with Offset |
| 3 | 61052 | 1 | ANGLE FRAME WELDMENT,RH,Flat Runner |
| | 61053 | 1 | ANGLE FRAME WELDMENT,RH,Long Pontoon |
| 4 | 61052 | 1 | ANGLE FRAME WELDMENT,RH,Flat Runner |
| | 61053 | 1 | ANGLE FRAME WELDMENT,LH,Long Pontoon |
| 5 | 62032 | 1 | PULL ANGLE WELDMENT,RH |
| 6 | 62031 | 1 | PULL ANGLE WELDMENT,LH |
| 7 | See Chart | 1 | TOP TRUSS ROD |
| 8 | 61174 | 2 | END BRACKET,Top Truss |
| 9 | See Chart | 2 | FRONT TRUSS ROD |
| 10 | 62166 | 2 | END BRACKET,Front Truss |
| 11 | 61035 | As Req'd | CLAMP HALF,2" |
| 12 | 61036 | As Req'd | CLAMP HALF,Elevated with Spacer |
| 13 | 62001 | 2 | HITCH PIN,CAT II/III |
| 14 | 61151 | 3 | LOCK PIN |
| 15 | 70078 | 1 | TOP PIN |
| 16 | 108259 | 1 | THREE POINT HITCH,Category II/III |
| | 108259-2 | 1 | THREE POINT HITCH,Category II/III, used with Shear Bolt |
| | 108956 | 1 | THREE POINT HITCH,Quick Hitch |
| 17 | 117424 | 1 | CENTER PULL ANGLE WELDMENT,for 72532 Gear Box (not shn) |

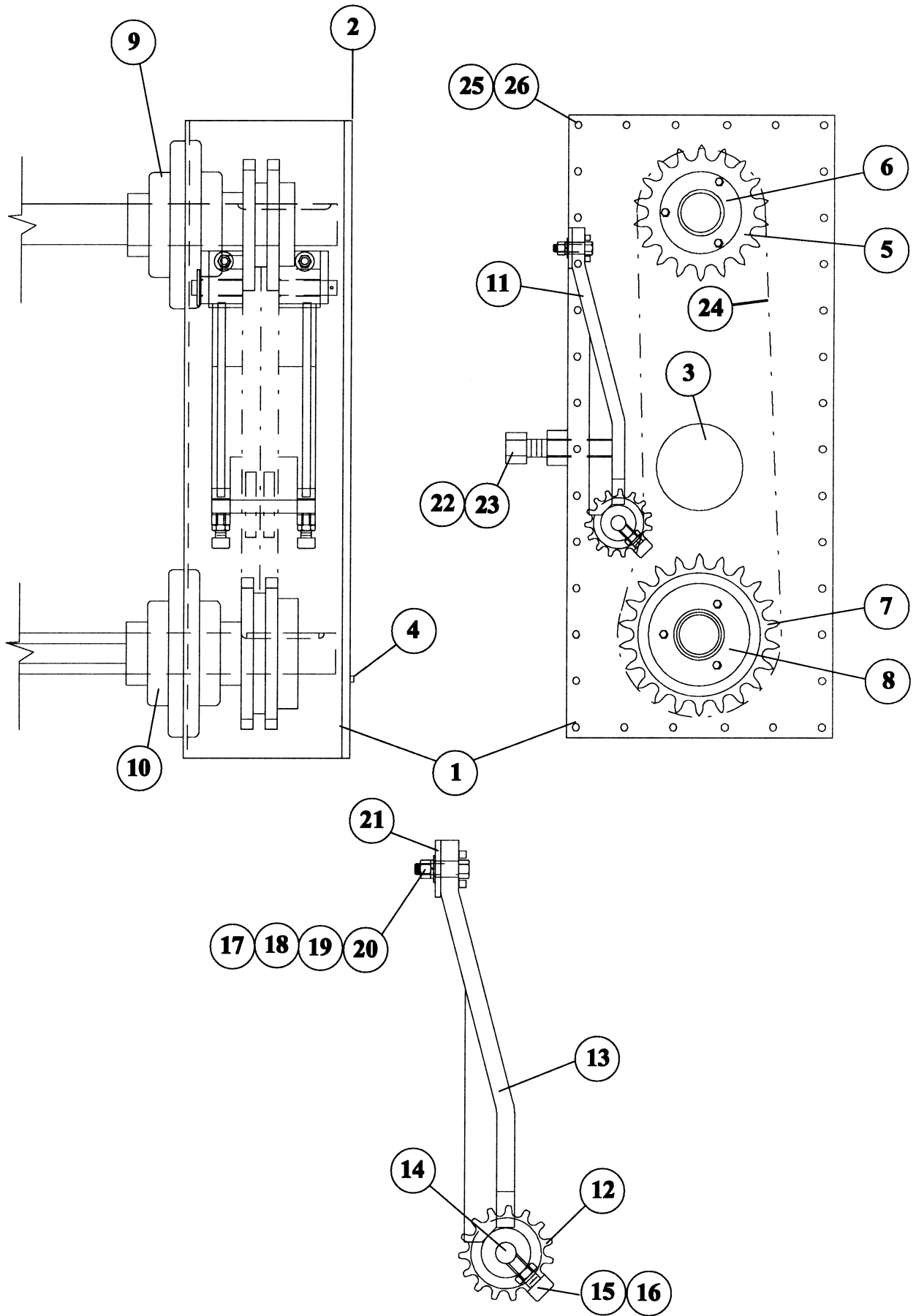
| MODEL | TOP TRUSS Ref.# 7 | FRONT TRUSS Ref.# 9 |
|---------|----------------------|------------------------|
| 366 | 107575-5 | 107576-2 |
| 360/630 | 107575-1 | 107576-2 |
| 442 | 107575-4 | 107576-5 |
| 440 | 107575-3 | 107576-3 |
| 438 | 107575-2 | 107576-7 |
| 830 | 107575-6 | 107576-4 |



CHAIN BOX

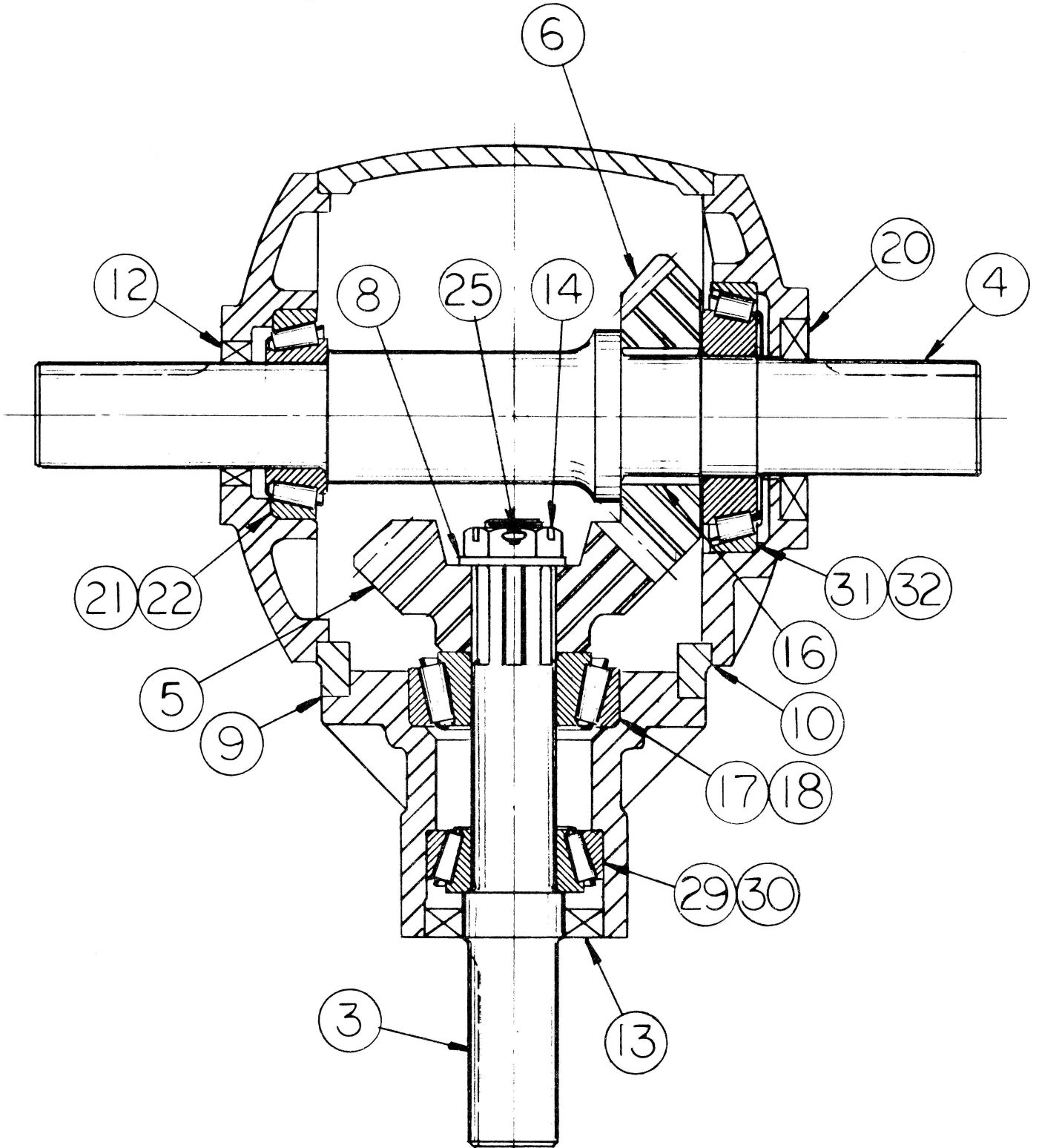
| Ref.# | Part Number | Qty. Req'd | Description |
|-------|-------------|------------|--|
| 1 | 107416-1 | 1 | CHAIN BOX ASSEMBLY,LH |
| | 107416-2 | 1 | CHAIN BOX ASSEMBLY,RH |
| | 107560-1 | 1 | CHAIN BOX WELDMENT,LH |
| | 107560-2 | 1 | CHAIN BOX WELDMENT,RH |
| 2 | 107418 | 1 | CHAIN BOX COVER |
| 3 | 60662 | 1 | PLASTIC PLUG,4" |
| 4 | 60616 | 1 | PIPE PLUG 3/8" |
| 5 | 62479 | 1 | SPROCKET, TOP, D80 (1,000 RPM) |
| | 62480 | 1 | SPROCKET, TOP, D80 (540 RPM) - Keyed Input Shaft Gear Box |
| | 66858 | 1 | SPROCKET, TOP, D60 (540 RPM) - Splined Input Shaft Gear Box |
| | 66661 | 1 | HUB, Top (1,000 RPM) |
| 6 | 64857 | 1 | HUB, Top, D80 (540 RPM) - Keyed Input Shaft Gear Box |
| | 66318 | 1 | HUB, Top, D60 (540 RPM) - Splined Input Shaft Gear Box |
| | 62480 | 1 | SPROCKET, Bottom (1,000 RPM) |
| | 62479 | 1 | SPROCKET, Bottom, D80 (540 RPM) - Keyed Input Shaft Gear Box |
| 7 | 66857 | 1 | SPROCKET, Bottom, D60 (540 RPM) - Splined Input Shaft Gear Box |
| | 66228 | 1 | HUB,Bottom (1,000 RPM) |
| | 66821 | 1 | HUB,Bottom, D80 (540 RPM) - Keyed Input Shaft Gear Box |
| | 66210 | 1 | HUB,Bottom, D60 (540 RPM) - Splined Input Shaft Gear Box |
| 8 | 66320 | 2 | BEARING, 1-11/16", 4-Hole Flange |
| | 66573 | 1 | INSERT |
| | 61165 | 1 | GASKET |
| | 66218 | 2 | BEARING, 1-15/16", 4-Hole Flange |
| 9 | 66574 | 1 | INSERT |
| | 63140 | 1 | GASKET |
| | 108507 | 1 | CHAIN IDLER ASSEMBLY COMPLETE, D80 |
| | 66232 | 2 | IDLER SPROCKET, D80 |
| 10 | 66189 | 2 | IDLER SPROCKET, D60 |
| | 108329 | 1 | CHAIN TIGHTENER WELDMENT, D80 |
| 11 | 107387 | 1 | CHAIN TIGHTENER WELDMENT, D60 |
| | 102208-10 | 1 | AXLE,IDLER SPROCKETS, D80 |
| 12 | 101957-4 | 1 | AXLE,IDLER SPROCKETS, D60 |
| | 70477 | 2 | SET SCREW |
| 13 | Stock | 2 | NUT,3/8" |
| 14 | Stock | 2 | FLAT WASHER,1/2" |
| 15 | Stock | 2 | LOCK WASHER, 1/2" |
| 16 | Stock | 2 | BOLT, 1/2" |
| 17 | Stock | 2 | NUT, 1/2" |
| 18 | 63105 | 1 | CUSHION, Rubber |
| 19 | 30067 | 1 | BOLT, 3/4", D80 |
| | 69657 | 1 | BOLT, 3/4", D60 |
| 20 | Stock | 1 | NUT, 3/4" |
| 21 | 72810 | 2 | CHAIN, D80, 1,000 RPM (cut to length, includes Conn. Link) |
| | 62476 | As Req'd | CHAIN, D80 (by the foot) |
| | 62477 | 2 | CONNECTOR LINK, D80 (not shown) |
| | 61129 | As Req'd | CHAIN, D60 (by the foot) |
| | 61130 | 2 | CONNECTOR LINK, D60 (not shown) |
| | 22 | Stock | 26 |
| 23 | Stock | 26 | BOLT, 5/16" |

CHAIN BOX



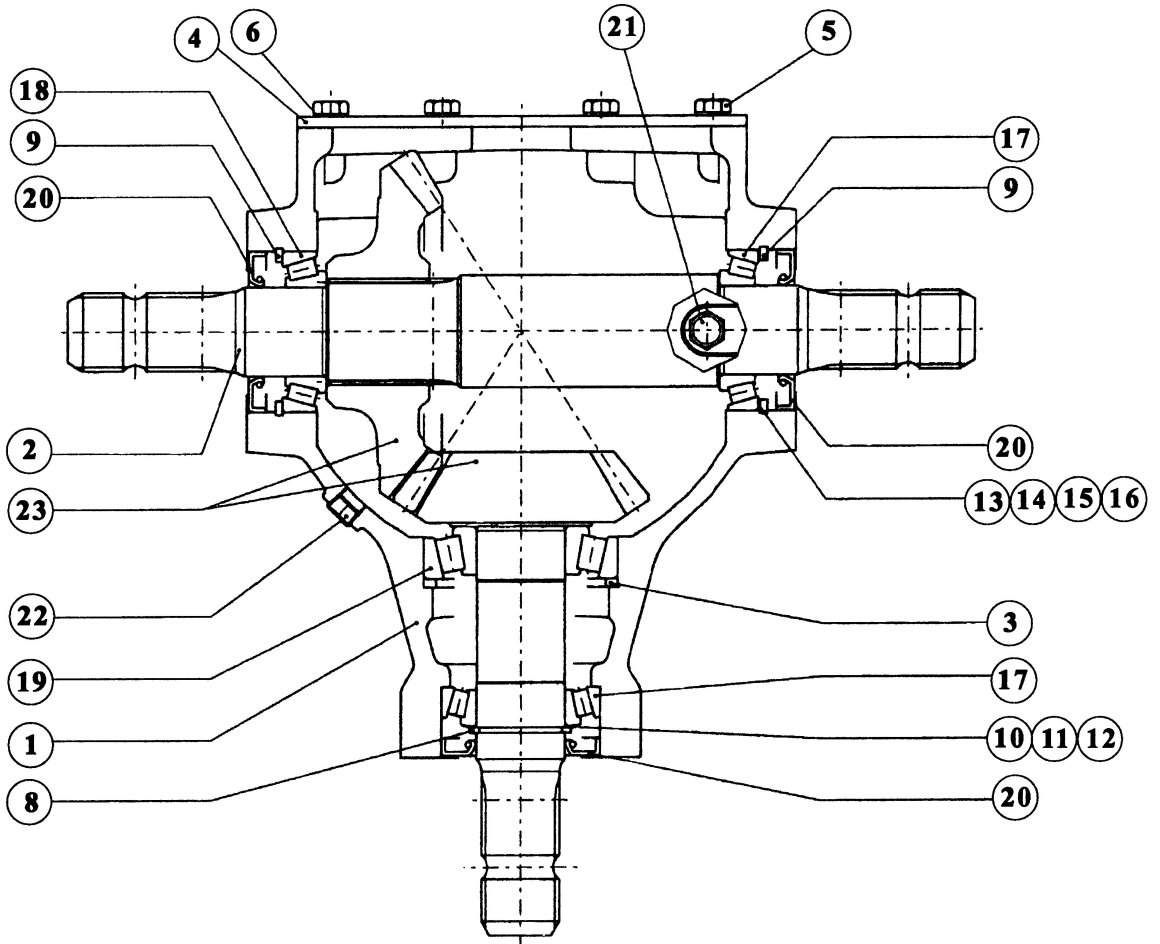
| T-BOX - Keyed Input Shaft | | | |
|---------------------------|-------------|------------|--|
| Ref.# | Part Number | Qty. Req'd | Description |
| | 62312 | 1 | T-BOX ASSEMBLY (Terrell) |
| 3 | 62322 | 1 | SHAFT, Input |
| 4 | 62328 | 1 | SHAFT, Output |
| | 62341 | 1 | RETAINING RING, Output Shaft |
| 5 | 62323 | 1 | GEAR, Pinion |
| 6 | 62324 | 1 | GEAR, Ring |
| 8 | 62330 | 1 | WASHER |
| 9 | 62339 | As Req'd | SHIM, Input Cover. Blue (see Ref.#5 below) |
| | 62326 | As Req'd | SHIM, Input Cover, Silver |
| | 62327 | As Req'd | SHIM, Input Cover, Yellow |
| 10 | 62342 | As Req'd | SHIM, Output Cover, Yellow |
| | 62332 | As Req'd | SHIM, Output Cover, Blue |
| | 62333 | As Req'd | SHIM, Output Cover, Silver |
| 12 | 62335 | 1 | SEAL, Output Shaft (small dia.) |
| 13 | 62334 | 1 | SEAL, Input Shaft |
| 14 | 62337 | 1 | NUT, Slotted |
| 16 | 62340 | 1 | KEY |
| 17 | 62346 | 1 | BEARING CONE, Input Shaft (closest to Pinion Gear) |
| 18 | 62347 | 1 | BEARING CUP, Input Shaft (closest to Pinion Gear) |
| 20 | 62336 | 1 | SEAL, Output Shaft (large dia.) |
| 21 | 62350 | 1 | BEARING CONE, Output Shaft (small dia.) |
| 22 | 62344 | 1 | BEARING CUP, Output Shaft (small dia.) |
| 25 | Stock | 1 | COTTER PIN, 1/8" x 2" |
| 29 | 62348 | 1 | BEARING CONE, Input Shaft (furthest from Pinion Gear) |
| 30 | 62349 | 1 | BEARING CUP, Input Shaft (furthest from Pinion Gear) |
| 31 | 62351 | 1 | BEARING CONE, Output Shaft (large dia.) |
| 32 | 67978 | 1 | BEARING CUP, Output Shaft (large dia.) |
| 35 | 117174 | 1 | SHIM KIT (2 of each Output Cover Shim,1 of each Input Cover Shim) |
| 36 | 117756 | 1 | BEARING KIT (All Bearings and Seals) |

T-BOX - Keyed Input Shaft



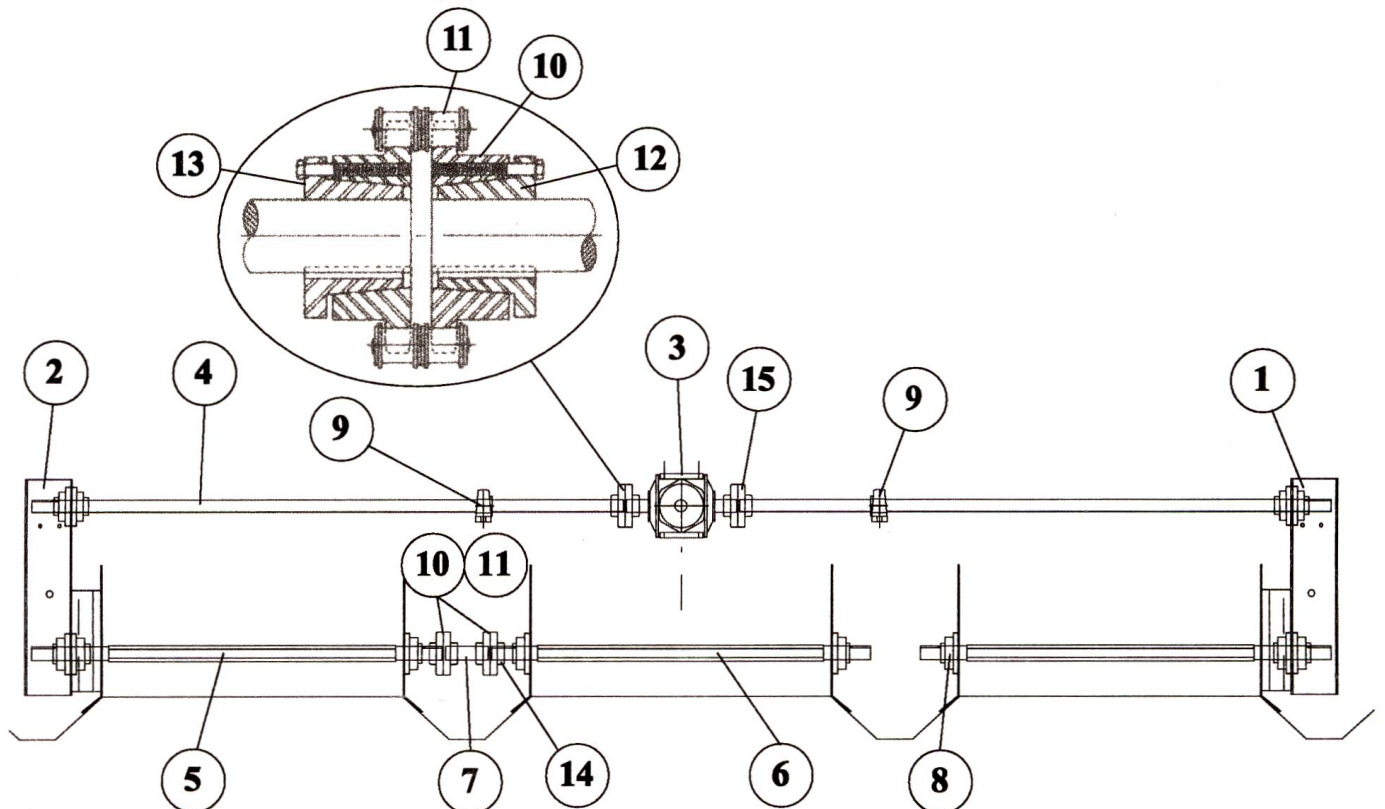
T-BOX - Splined Input Shaft

| Ref.# | Part Number | Qty. Req'd | Description |
|-------|-------------|------------|---|
| | 72532 | 1 | T-BOX ASSEMBLY (B&P) |
| 1 | 72635 | 1 | HOUSING |
| 2 | 72636 | 1 | SHAFT, Output. Splined |
| 3 | 72637 | 1 | RETAINING RING |
| 4 | 72638 | 1 | COVER |
| 5 | 72639 | 8 | SCREW |
| 6 | 72640 | 8 | WASHER |
| 8 | 72642 | 1 | RETAINING RING |
| 9 | 72643 | 2 | RETAINING RING |
| 10 | 72644 | As Req'd | SHIM (see Ref.#24 below) |
| 11 | 72645 | As Req'd | SHIM |
| 12 | 72646 | As Req'd | SHIM |
| 13 | 72647 | As Req'd | SHIM |
| 14 | 72648 | As Req'd | SHIM |
| 15 | 72649 | As Req'd | SHIM |
| 16 | 72650 | As Req'd | SHIM |
| 17 | 72651 | 2 | BEARING (see Ref.# 25 below) |
| 18 | 72652 | 1 | BEARING |
| 19 | 72653 | 1 | BEARING |
| 20 | 72654 | 3 | SEAL, Oil |
| 21 | 72655 | 1 | BREATHER, Oil Plug |
| 22 | 72656 | 5 | OIL PLUG |
| 23 | 72657 | 1 | GEAR SET & INPUT SHAFT |
| 24 | 117833 | 1 | SHIM KIT (All Shims) |
| 25 | 117834 | 1 | BEARING KIT (All Bearings and Seals) |



DRIVE ASSEMBLIES - Keyed Input Shaft T-Box

| Ref.# | Part Number | Qty. Req'd | Description |
|-------|-------------|------------|--|
| 1 | 107416-1 | 1 | CHAIN BOX ASSEMBLY, LH |
| 2 | 107416-2 | 1 | CHAIN BOX ASSEMBLY, RH |
| 3 | 62312 | 1 | T-BOX (see ref#'s 22, 23 or 24 below) |
| 4 | See Chart | As Req'd | SHAFT, Top, 1-11/16" Dia. |
| 5 | See Chart | As Req'd | SHAFT, Outer Tiller, D80 Chain |
| 6 | See Chart | As Req'd | SHAFT, Inner Tiller |
| 7 | See Chart | As Req'd | SHAFT, Connecting |
| 8 | 66218 | As Req'd | BEARING, 1-15/16", 4-Hole Flange (Brg Insert is p/n 66574) |
| 9 | 66587 | 2 | BEARING, 1-11/16", Pillow Block (Only on 366 & wider models) |
| 10 | 66875 | 2 | COUPLER HALF, Chain |
| 11 | 67036 | 1 | CHAIN, Coupler |
| 12 | 64662 | 1 | BUSHING, T-Box to Output Shaft, 1-3/4" |
| 13 | 66318 | 1 | BUSHING, Top Shaft to Chain Box, 1-11/16" |
| 14 | 66210 | 2 | BUSHING, Tiller Shaft to Connecting Shaft, 1-15/16" |
| 15 | 109290 | 1 | COVER ASSEMBLY, Chain Coupler |
| | 71312 | As Req'd | SEAL KIT, Cover |
| 16 | 107614 | 2 | DRIVE COVER, 7" Wide (not shown) |
| 17 | See Chart | 2 | DRIVE COVER, Long (not shown) |
| 18 | 108926-1 | 1 | SKIRT GUARD, Top Shaft, RH (not shown) |
| 19 | 108926-2 | 1 | SKIRT GUARD, Top Shaft, LH (not shown) |
| 20 | See Pg.16 | 1 | DRIVELINE ASSEMBLY (not shown) |
| 21 | See Pg.16 | 2 | OPTIONAL SHEAR BOLT SHAFT (not shown) (440 s/n 5697 only) |
| 22 | 80159 | 1 | T-BOX REPLCMENT KIT, 62312 to Splined Input T-Box, 360 & smaller |
| 23 | 80160 | 1 | T-BOX REPLCMENT KIT, 62312 to Splined Input T-Box, 366 & larger |
| 24 | 80162 | 1 | T-BOX REPLCMENT KIT, Hub City to Splined Input T-Box, 360 |
| 25 | 72872 | 2 | SHEAR BOLT SHAFT, Optional, (not shn) for use w/ 62312 T-Box |



| SHAFTS & COVERS - Keyed Input Shaft T-Box | | | | | |
|---|----------------------|--|-------------------------------|-----------------------------|-------------------------|
| Model | Ref.# 4 Top Shaft | Ref.# 5 Outer Tiller (Chain Box End) | Ref.# 9 Inner Tiller Shaft | Ref.# 7 Connecting Shaft | Ref.# 17 Drive Cover |
| 160-42 | 107607-16 (23) | 107616-5 (57-1/4) | | | 107615-5 |
| 180-62 | 107607-13 (33) | 107616-7 (77-1/4) | | | 107615-4 |
| 180-64 | 107607-24 (34) | | | | 107615-4 |
| 180-66 | 107607-12 (35) | 107616-10 (81-1/4) | | | |
| | | 113154 (optional) | | | |
| 238-20 | 62421 (31) | 107616-2 (35-1/4) | 62193 (31) | 62177 (6) 1-15/16 | |
| 240-22-12 | 62419 (28) | 107616-1 (27-1/4) | 62191 (23) | 62177 (6) 1-15/16 | |
| 240-22-22 | 107607-13 (33) | 107616-3 (37-1/4) | 62194 (33) | 62177 (6) 1-15/16 | |
| | | 117467 (36-3/4,D60chn) | | | |
| 242-24 | 107607-12 (35) | 107616-4 (39-1/4) | 62195 (35) | 62177 (6) 1-15/16 | |
| 244-26-12 | 62420 (30) | 107616-1 (27-1/4) | 62191 (23) | 62185 (20) 1-15/16 | |
| 360-12-12 | 107607-9 (68) | 107616-1 (27-1/4) | 62191 (23) | 62179 (36) 1-15/16 | |
| 360-20-20 | 107607-7 (72) | 107616-2 (35-1/4) | 62193 (31) | 62186 (28) 1-15/16 | |
| 360-22-22 | 107607-6 (73) | 107616-3 (37-1/4) | 62194 (33) | 62187 (26) 1-15/16 | |
| 360-24-24 | 107607-5 (74) | 107616-4 (39-1/4) | 62195 (35) | 62183 (24) 1-15/16 | |
| 360-42-12 | 107607-9 (68) | 107616-1 (27-1/4) | 62191 (23) | 62179 (36) 1-15/16 | |
| 360-42-20 | 107607-7 (72) | 107616-2 (35-1/4) | 62193 (31) | 62186 (28) 1-15/16 | 107615-2 |
| 360-42-22 | 107607-6 (73) | 107616-3 (37-1/4) | 62194 (33) | 62187 (26) 1-15/16 | 107615-2 |
| 360-42-24 | 107607-5 (74) | 107616-4 (39-1/4) | 62195 (35) | 62183 (24) 1-15/16 | 107615-2 |
| 360-42-42 | 107607-2 (83) | 62446 (57-3/4) | 62199 (53) | 62177 (6) 1-15/16 | 107615-2 |
| 366-12-12 | 107607-5 (74) | 107616-1 (27-1/4) | 62191 (23) | 62178 (42) 1-15/16 | |
| 366-22-22 | 62432 (79) | 107616-3 (37-1/4) | 62194 (33) | 62181 (32) 1-15/16 | |
| 366-24-24 | 107607-3 (80) | 107616-4 (39-1/4) | 62195 (35) | 62182 (30) 1-15/16 | |
| 366-48-24 | 107607-3 (80) | 107616-4 (39-1/4) | 62195 (35) | 62182 (30) 1-15/16 | 107615-1 |
| 366-48-48 | 107607-1 (92) | 107616-6 (63-1/4) | 62200 (59) | 62177 (6) 1-15/16 | 107615-1 |
| 430-12 | 107607-11 (53) | 107616-1 (27-1/4) | 62191 (23) | 62177 (6) 1-15/16 | |
| 438-20 | 107607-10 (69) | 107616-2 (35-1/4) | 62193 (31) | 62177 (6) 1-15/16 | |
| 440-22-12 | 107607-9 (68) | 107616-1 (27-1/4) | 62191 (23) | 62184 (16) 1-15/16 | 107615-3 |
| 440-22-22 | 107607-6 (73) | 107616-3 (37-1/4) | 62194 (33) | 62177 (6) 1-15/16 | 107615-3 |
| 440-26-26 | 107607-27 (75) | | | 109351 (Coupling) 2" | |
| 442-24 | 107607-4 (77) | 107616-4 (39-1/4) | 62195 (35) | 62177 (6) 1-15/16 | |
| 444-26 | 62434 (81) | 62440 (40-3/4) | 62196 (37) | 62177 (6) 1-15/16 | |
| 630-12 | 107607-2 (83) | 107616-1 (27-1/4) | 62191 (23) | 62177 (6) 1-15/16 | 107615-2 |
| 633-15 | 107607-1 (92) | 107616-12 (30-1/4) | 107617-10 | 62177 (6) 1-15/16 | 107615-1 |
| | | | | 113641 (Coupling) 3" | |
| | | | | 108571 (Coupling) 4" | |

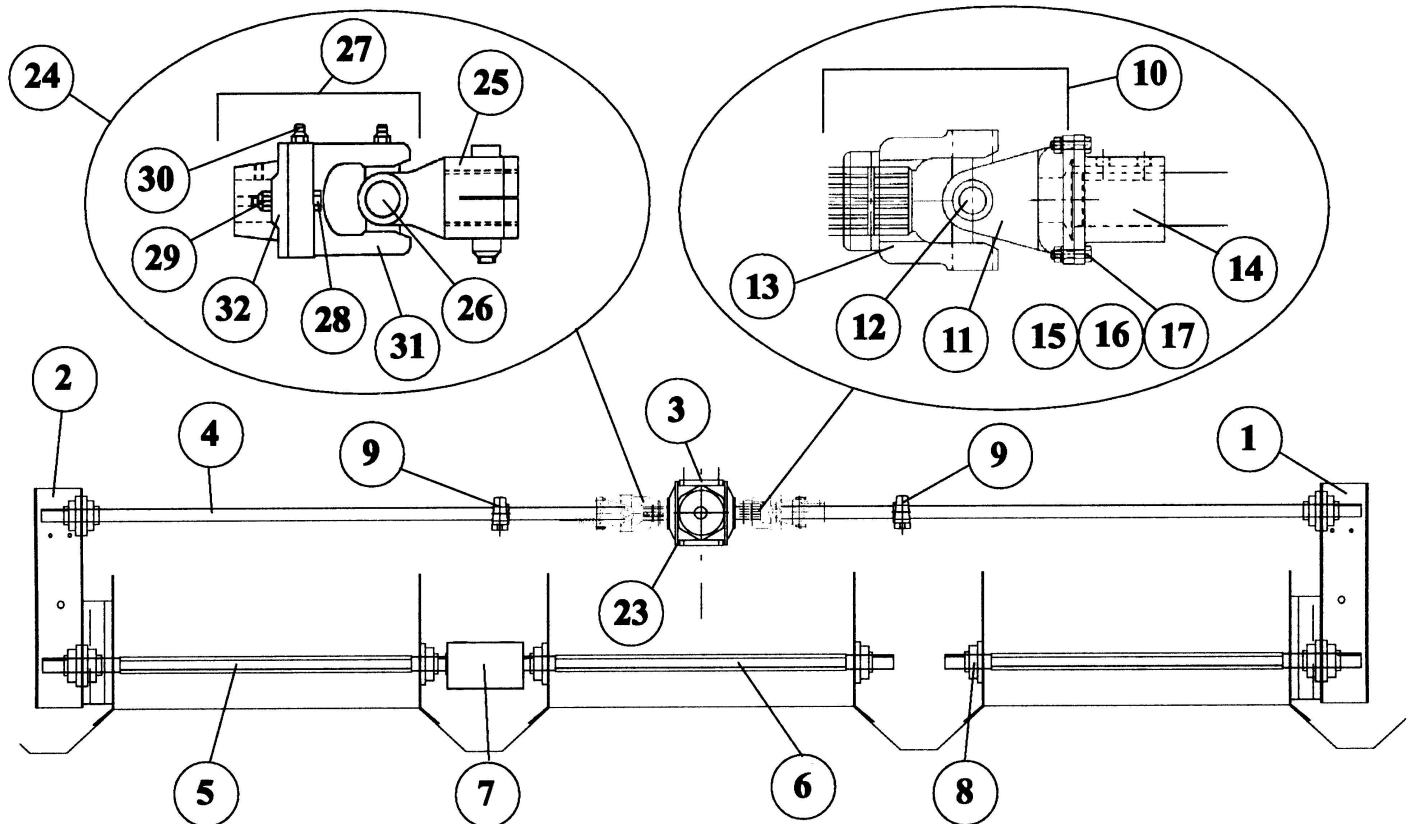
| OPTIONAL HEX SHAFT | | |
|--------------------|--|-------------------------|
| Model | Ref.# 5 Outer Tiller (Chain Box end) | Ref.# 6 Inner Tiller |
| 30-12 | 107700-1 | 107699-1 |
| 38-12 | 107700-2 | 107699-2 |
| 40-22 | 107700-3 | 107699-3 |
| 42-24 | 107700-4 | 107699-4 |
| 60-42 | 107700-5 | 107699-5 |
| 66-48 | 107700-6 | 107699-6 |

DRIVE ASSEMBLIES - Splined Input Shaft T-Box

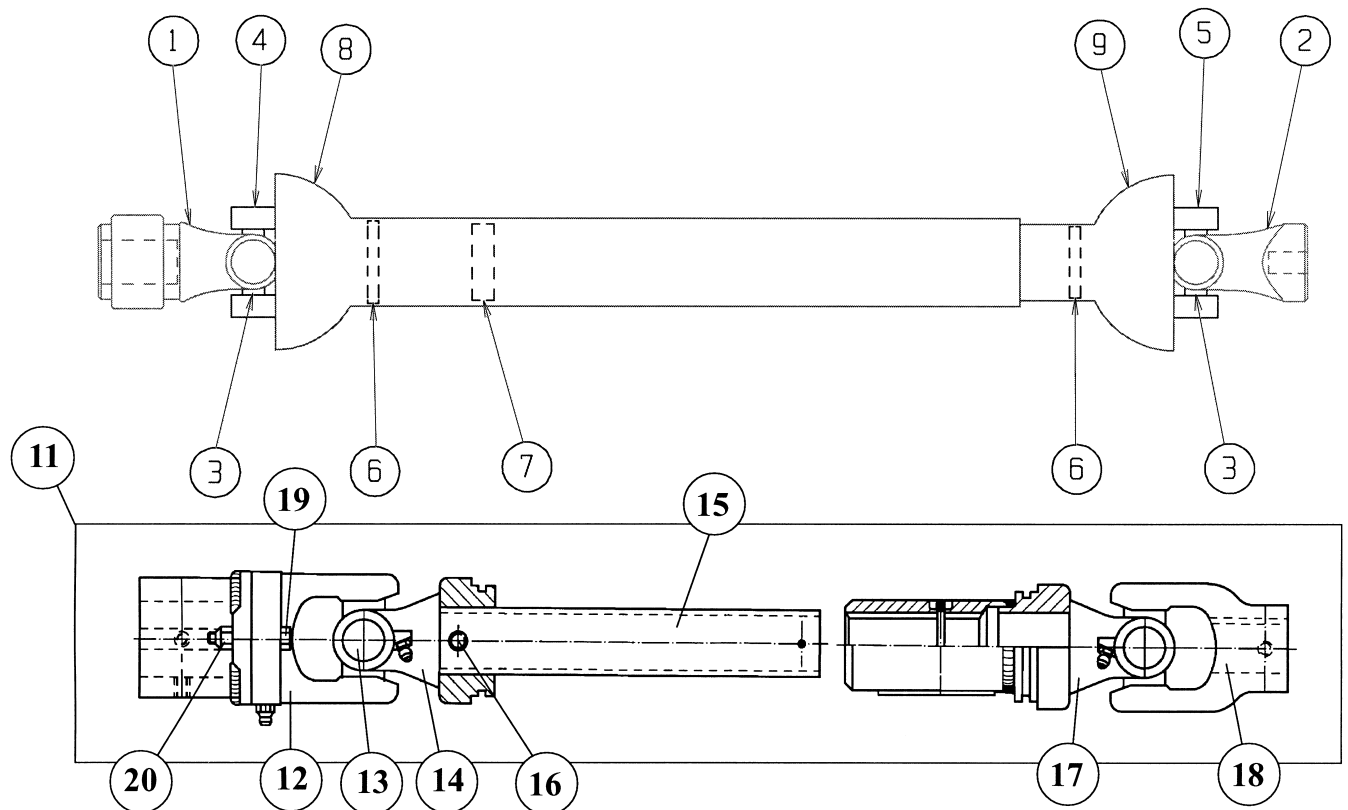
| Ref.# | Part Number | Qty. Req'd | Description |
|-------|-------------|------------|---|
| 1 | 107416-1 | 1 | CHAIN BOX ASSEMBLY, LH |
| 2 | 107416-2 | 1 | CHAIN BOX ASSEMBLY, RH |
| 3 | 72532 | 1 | T-BOX |
| 4 | See Chart | As Req'd | SHAFT, Top, 1-11/16" Dia. |
| 5 | See Chart | As Req'd | SHAFT, Outer Tiller, D80 Chain |
| 6 | See Chart | As Req'd | SHAFT, Inner Tiller |
| 7 | 115403 | As Req'd | CONNECTING COUPLER ASSEMBLY |
| | 117550 | 2 | CONNECTING COUPLER ASSEMBLY, 440-30 only |
| 8 | 66218 | As Req'd | BEARING, 1-15/16", 4-Hole Flange |
| | 66574 | 1 per | INSERT |
| 9 | 66587 | 2 | BEARING, 1-11/16", Pillow Block |
| | 66573 | 1 per | INSERT |
| 10 | 72524 | 2 | TOP SHAFT DRIVELINE ASSEMBLY |
| 11 | 72602 | 1 | FLANGE YOKE |
| 12 | 72185 | 2 | CROSS & BEARING KIT |
| 13 | 72190 | 1 | YOKE |
| 14 | 116394 | 2 | CONNECTOR COUPLER |
| 15 | 71227 | 16 | BOLT, 5/16" |
| 16 | Stock | 16 | LOCKWASHER |
| 17 | Stock | 16 | NUT, 5/16" |
| 18 | 107614 | 2 | DRIVE COVER, 7" Wide (not shown) |
| 19 | See Chart | 2 | DRIVE COVER, Long (not shown) |
| 20 | 108926-1 | 1 | SKIRT GUARD, Top Shaft, RH (not shown) |
| 21 | 108926-2 | 1 | SKIRT GUARD, Top Shaft, LH (not shown) |
| 22 | See Pg.16 | 2 | OPTIONAL SHEAR BOLT SHAFT (not shown) (440 s/n 5697 only) |
| 23 | 72346 | 4 | BOLT |
| 24 | 73171 | 2 | OPTIONAL SHEAR BOLT CLUTCH ASSEMBLY |
| 25 | 72714 | 1 | YOKE |
| 26 | 72713 | 1 | CROSS & BEARING KIT |
| 27 | 72873 | 1 | SHEARBOLT CLUTCH |
| 28 | 72366 | 1 | BOLT |
| 29 | 72286 | 1 | NUT |
| 30 | 72869 | 1 | GREASE FITTING |
| 31 | 72868 | 1 | YOKE |
| 32 | 72871 | 1 | HUB |
| 33 | 72870 | 4 | BALL (not shown) |

SHAFTS & COVERS - Splined Input Shaft T-Box

| Model | Ref.# 4 Top Shaft | Ref.# 5 Outer Tiller (Chain Box End) | Ref.# 6 Inner Tiller Shaft | Ref.# 19 Drive Cover | Note |
|-----------|----------------------|--|-------------------------------|-------------------------|-----------|
| 160-42 | 107607-35 (14-3/4) | 107700-5 (57-1/4) | | 107614 | Shearbolt |
| 180-62 | 107607-32 (24-3/4) | 107616-7 (77-1/4) | | 107615-4 | |
| 184-66 | 117422-1 (27-7/16) | 107616-10 (81-1/4) | | 107615-21 | |
| 360-42-42 | 117422-3 (75-7/16) | | | 107615-2 | Shearbolt |
| 380-66-66 | 107607-31 (106-3/4) | | | 107615-6 | |
| 440-22-22 | 107607-33 (66-3/4) | 107616-13 (40-3/4) | 107617-9 (37) | 107615-3 | Shearbolt |
| 440-22-22 | 117422 (65-13/16) | 107616-13 (40-3/4) | 107617-9 (37) | 107615-3 | Shearbolt |
| 440-30-30 | 117422-2 (69-13/16) | | | 107615-22 | Shearbolt |
| 440-25-25 | 107607-30 (64-1/4) | 107616-13 (40-3/4) | 107617-9 (37) | 107615-7 | |

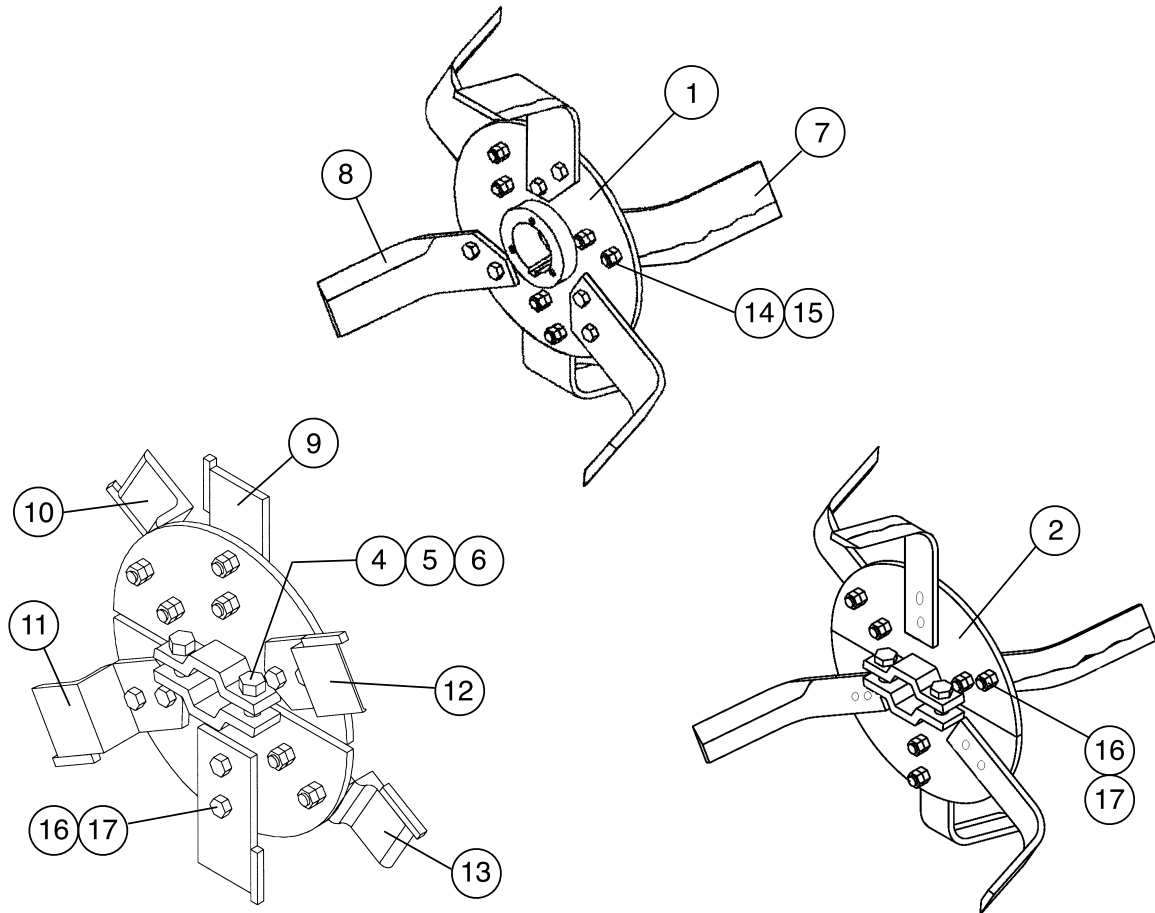


| DRIVELINE | | | |
|-----------|-------------|------------|--|
| Ref.# | Part Number | Qty. Req'd | Description |
| | 63008 | | DRIVELINE ASSEMBLY, 21-Spline, 1-1/2" Keyed Input |
| | 71022 | | DRIVELINE ASSEMBLY, 20-Spline, 1-3/4" Keyed Input |
| | 116638 | | DRIVELINE ASSEMBLY, 21-Spline, 1-3/8" Splined Input |
| | 116637 | | DRIVELINE ASSEMBLY, 20-Spline, 1-3/4" Splined Input |
| | 116782 | | DRIVELINE ASSEMBLY, 6-Spline, 1-3/8" Splined Input |
| 1 | 62049 | 1 | YOKE, 21-Spline, 1-3/8" |
| | 62384 | 1 | YOKE, 20-Spline, 1-3/4" |
| | 62048 | 1 | YOKE, 6-Spline, 1-3/8" |
| 2 | 62050 | 1 | YOKE, 1-1/2", Key & Set Screw (Keyed T-Box end) |
| 3 | 62051 | 2 | CROSS & BEARING KIT |
| 4 | 62471 | 1 | YOKE & SHAFT, Tractor End |
| 5 | 62472 | 1 | YOKE & SLEEVE, T-Box End |
| 6 | 70007 | 2 | LOCK & SHIELD BEARING |
| 7 | 73890 | 1 | NYLON BEARING (older steel shield version is p/n 62052) |
| 8 | 73892 | 1 | OUTER SHIELD, Tractor End (older steel shield version is p/n 62036) |
| 9 | 73891 | 1 | INNER SHIELD, T-Box End (older steel shield version is p/n 62038) |
| 10 | 62382 | 1 | LOCK PIN KIT, for 21-Spline Yoke p/n 62049 (not shown) |
| 11 | 72330 | 1 | SHEARBOLT DRIVELINE ASSEMBLY, Optional, 440-22 s/n 5697 only (for round shaft T-Box output) |
| 12 | 72328 | 1 | SHEARBOLT CLUTCH |
| 13 | 72185 | 2 | CROSS & BEARING KIT, Shearbolt Clutch |
| 14 | 72186 | 1 | INBOARD YOKE |
| 15 | 72187 | 1 | INNER PROFILE SHAFT |
| 16 | 72188 | 1 | SPRING PIN |
| 17 | 72189 | 1 | YOKE & SLEEVE |
| 18 | 72329 | 1 | YOKE |
| 19 | 72284 | 1 | BOLT, 440-22 |
| 20 | 72286 | 1 | NUT, 440-22 |



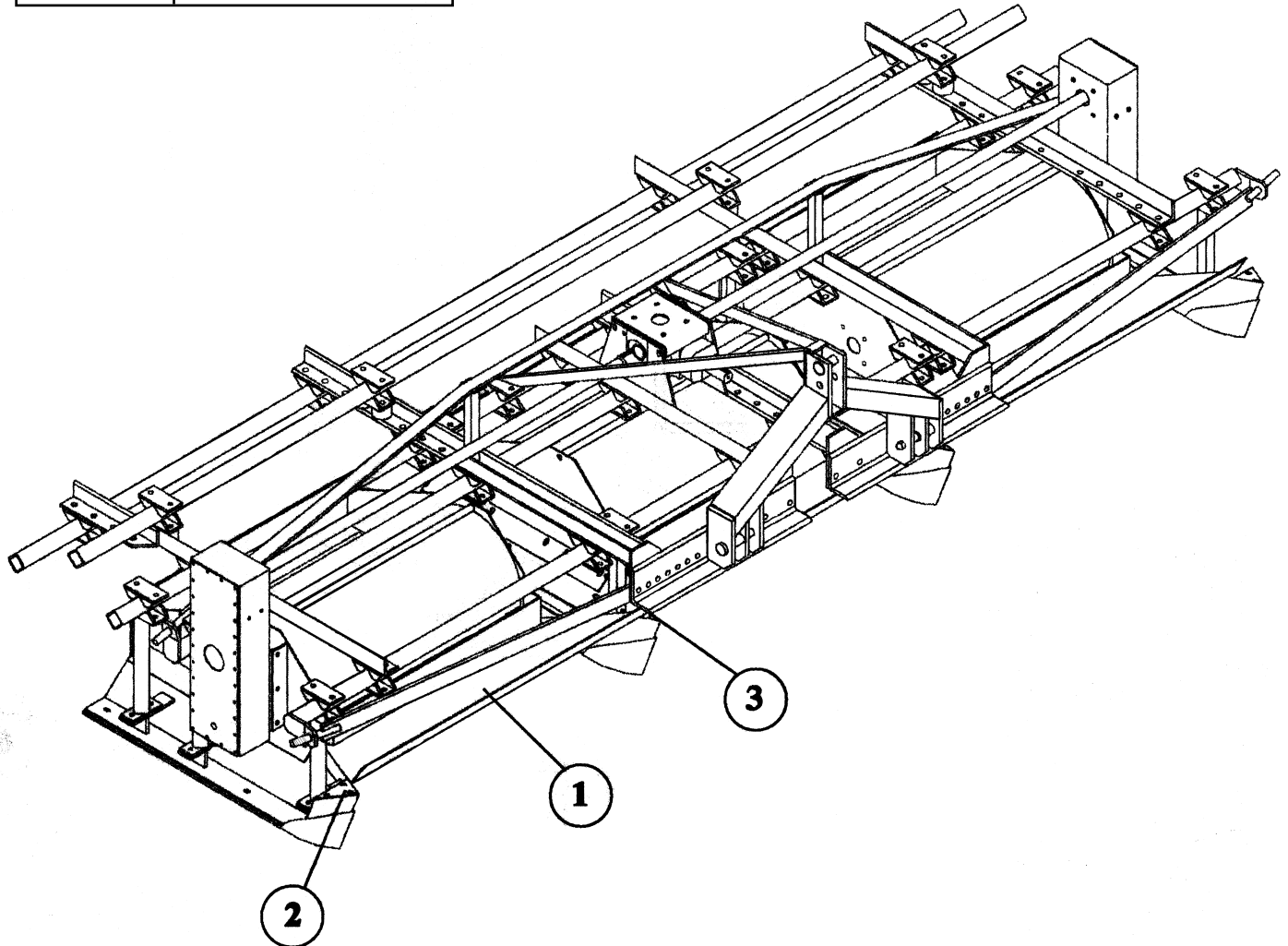
ROTOR ASSEMBLIES

| Ref.# | Part Number | Qty. Req'd | Description |
|-------|-------------|-------------|---|
| 1 | 62305 | 1 | ROTOR WELDMENT with Hub |
| | 66210 | | TAPERED HUB, for 62305 Rotor Weldment (not shown) |
| 2 | 107698 | 2 per | ROTOR HALF, for use with L-Blades (optional) |
| | 112109 | 2 per | ROTOR HALF, for use with I-Blades (optional) |
| 4 | 72229 | 4 per | BOLT, for Rotor Halves |
| 5 | Stock | 4 per | LOCK WASHER, for Rotor Halves |
| 6 | 71185 | 4 per | NUT, Side Lock, for Rotor Halves (alternate is p/n 72434 Nut) |
| 7 | 62378 | 3 | L-BLADE, Short, RH, 3" Wide |
| | 62390 | 3 | L-BLADE, Short, RH, 2-1/2" Wide, for Rotor Halves |
| | 62373 | 3 | L-BLADE, Long, RH, 2-1/2" Wide, for Rotor Halves |
| 8 | 62379 | 3 | L-BLADE, Short, LH, 3" Wide |
| | 62392 | 3 | L-BLADE, Short, LH, 2-1/2" Wide, for Rotor Halves |
| | 62374 | 3 | L-BLADE, Long, LH, 2-1/2" Wide, for Rotor Halves |
| 9 | 112104 | 2 | I-BLADE, Straight, for Rotor Halves |
| | 116186 | 2 | I-BLADE, Straight, High Wear, for Rotor Halves |
| 10 | 112105 | 1 | I-BLADE, 2" Offset, RH, for Rotor Halves |
| | 116190 | 1 | I-BLADE, 2" Offset, RH, High Wear, for Rotor Halves |
| 11 | 112106 | 1 | I-BLADE, 2" Offset, LH, for Rotor Halves |
| | 116189 | 1 | I-BLADE, 2" Offset, LH, High Wear, for Rotor Halves |
| 12 | 112103 | 1 | I-BLADE, 1" Offset, LH, for Rotor Halves |
| | 116187 | 1 | I-BLADE, 1" Offset, LH, High Wear, for Rotor Halves |
| 13 | 112102 | 1 | I-BLADE, 1" Offset, RH, for Rotor Halves |
| | 116188 | 1 | I-BLADE, 1" Offset, RH, High Wear, for Rotor Halves |
| 14 | 72485 | 2 per blade | BOLT, for 3" Wide L-Blades |
| 15 | 70803 | 2 per blade | NUT, Flanged, for 72485 Bolt |
| 16 | 72359 | 2 per blade | BOLT, for optional 2-1/2" Wide L-Blades & I-Blades |
| 17 | 68883 | 4 per blade | NUT, for 72359 Bolt |



| HOODS - PONTOON STYLE INCORPORATOR | | | |
|------------------------------------|-------------|------------|---------------|
| Ref.# | Part Number | Qty. Req'd | Description |
| 1 | See Chart | 1 | HOOD ASSEMBLY |
| 2 | 61041 | 1 | CLAMP, RH |
| | 61042 | 1 | CLAMP, LH |
| 3 | 61040 | As Req'd | CLAMP, Inner |

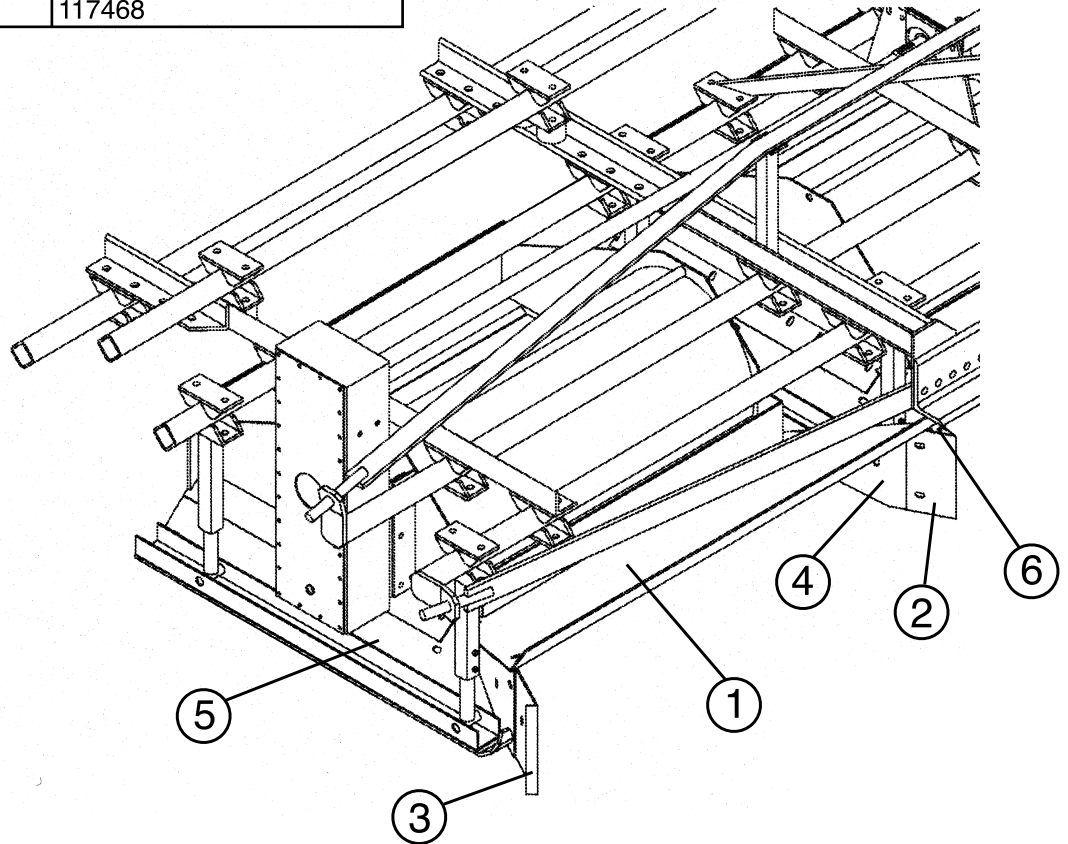
| Ref.# 1 | |
|----------|-------------------------|
| Model | Part Number |
| 30-12 | 107553-1 |
| 34-22-12 | |
| 38-20 | 107553-2 |
| 40-24 | |
| 40-22 | 107553-3 |
| 42-24 | 107553-4 |
| 54-36-12 | 117654 |
| 60-42 | 107553-6 |
| | 109029-6 (with Tunnels) |
| 60-42-24 | 117583 |
| 66-48 | 107553-8 |
| 72-54 | 107553-10 |
| 80-62 | 107553-9 |



HOODS - FLAT RUNNER STYLE INCORPORATOR

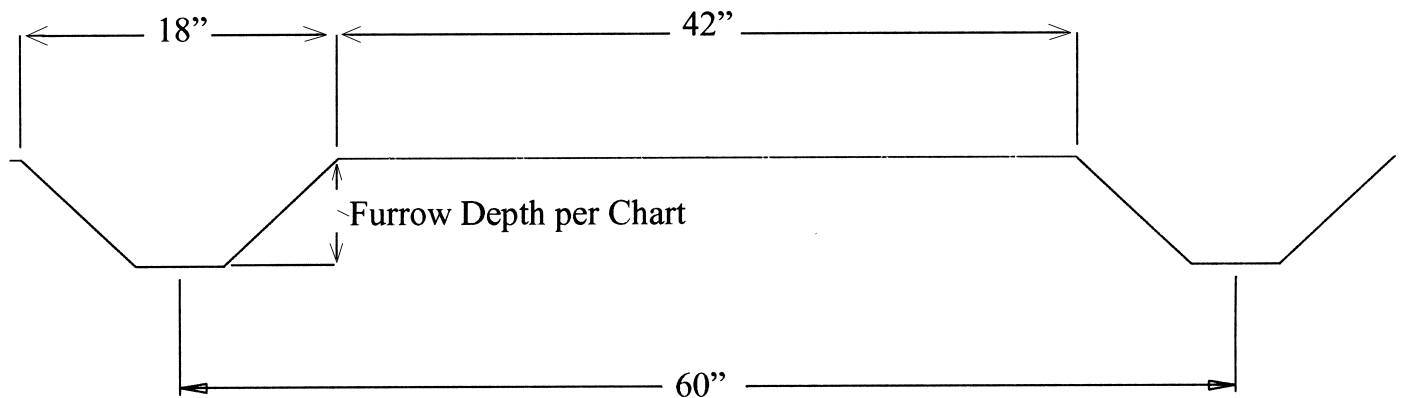
| Ref.# | Part Number | Qty. Req'd | Description |
|-------|-------------|------------|---------------|
| 1 | See Chart | 1 | HOOD ASSEMBLY |
| 2 | 61041 | 1 | CLAMP, RH |
| | 61042 | 1 | CLAMP, LH |
| 3 | 61040 | As Req'd | CLAMP, Inner |

| Ref.# 1 (Furrow depth 6" unless otherwise shown) | | |
|--|--------------|-----------------------------|
| Model | Spring Door | Rigid Door |
| 30-12 | 62240 | 117815 |
| 34-22-12 | 109622 | |
| 38-20 | 62242 | |
| 40-22 | 62243 | 110850-1 |
| | 108366 (8") | 110850-3 (8") |
| | 108454 (10") | |
| 40-25 | | 116621 (8") |
| 40-24 | | 110911 (8") |
| 40-26 | | 115292 |
| 40-30 | | 117552 |
| 42-24 | 62233 | |
| 60-42 | 62245 | 117610 (8") |
| | | 110918 (8")(with Tunnels) |
| | | 109054 (10")(with Tunnels) |
| 60-42-24 | | 62249 |
| 60-44 | | 109475 |
| 66-48 | 62235 | 108898-1(10")(with Tunnels) |
| | | 110888 (with Tunnels) |
| 80-62 | | 116998 |
| 80-64 | 115978 | |
| 80-66 | | 116688 (5") |
| 84-66 | | 117468 |



| HOODS - FLAT RUNNER STYLE INCORPORATOR cont'd | | | | | | | |
|---|-------------------------|--------------------------------|------------------------------|------------------------------|------------------------------|------------------------------|-------------------------|
| Furrow Depth/ Model | Ref.#2 Inner Nose Cover | Ref.#3 Outer Nose Cover | Ref.#4 Wear Plate | | Ref.#5 Wear Plate Mount | | Ref.#6 Connecting Plate |
| | | | Spring Door | Rigid Door | Spring Door | Rigid Door | |
| 6" | | | | | | | |
| Std. | 62636 | 62639 (RH) 62640 (LH) | 62638 (RH) 62637 (LH) | 110415-1(RH) 110415-2(LH) | 62641 (RH) 62642 (LH) | 112122-2(RH) 112122-1(LH) | 62643 |
| 34-22 | 109628 | 107497-1(RH) | 109618-2(RH) 109618-1(LH) | | 109621-1(LH) 109621-2(RH) | | 108862 |
| 40-24 | | | 108518-1(RH) 108518-2(LH) | | 108516-1(RH) 108516-2(LH) | | 108521 |
| 40-26 | 115295 | 115294-2 (RH) 115294-1 (LH) | | 110029-1(LH) 110029-2(RH) | | 115297-1(LH) 115297-2(RH) | 108862 |
| 40-30 | 117557 | 62639 (RH) 62640 (LH) | | 117551-1(LH) 117551-2(RH) | | 117549-1(LH) 117549-2(RH) | 117539 |
| 80-64 | 62636 | 62639 (RH) 62640 (LH) | 115977-1(LH) 115977-2(RH) | 113633-1(LH) 113633-2(RH) | 115976-1(LH) 115976-2(RH) | | 62643 |
| 80-66 | 116684 | 116682-1 (LH) 116682-2 (RH) | | 116643-1(LH) 116643-2(RH) | | 116642-1(LH) 116642-2(RH) | 108862 |
| 5"deep | | | | | | | |
| 8" | | | | | | | |
| Std. | 110922 | 110921-2 (RH) 110921-1 (LH) | 109919-1(LH) 109919-2(RH) | 110942-1(LH) 110942-2(RH) | 108367-1(LH) 108367-2(RH) | 112892-1(LH) 112892-2(RH) | 62643 |
| 40-24 | 109423 | 109422-1(RH) 109422-2(LH) | 115296-1(LH) 115296-2(RH) | 109428-2(LH) 109428-1(RH) | | 113574-1(LH) 113574-2(RH) | |
| 40-25 | 116633 | 116631-1 (LH) 116631-2 (RH) | | 116630-1(LH) 116630-2(RH) | | 116629-1(LH) 116629-2(RH) | 108521 |
| 10" | | | | | | | |
| Std. | 108737 | 108886-1(RH) 108886-2(LH) | 108451-1(RH) 108451-2(LH) | 108736-1(RH) 108736-2(LH) | 108453-1(RH) 108453-2(LH) | 108900-1(LH) 108900-2(RH) | 62636 |
| 60-44 | 112412 | 112413-1 (LH) 112414-2 (RH) | | 112356-1(LH) 112356-2(RH) | | 112887-1(LH) 112887-2(RH) | 108521 |
| 12" | | | | | | | |
| 60-38 Special | | 107976 (RH or LH) | 107956-1(RH) 107956-2(LH) | | 112958-1(LH) 112958-2(RH) | | |
| 66-38 Special | | | 112955-1(LH) 112955-2(RH) | | 112954-1(LH) 112954-2(RH) | | 112957 |

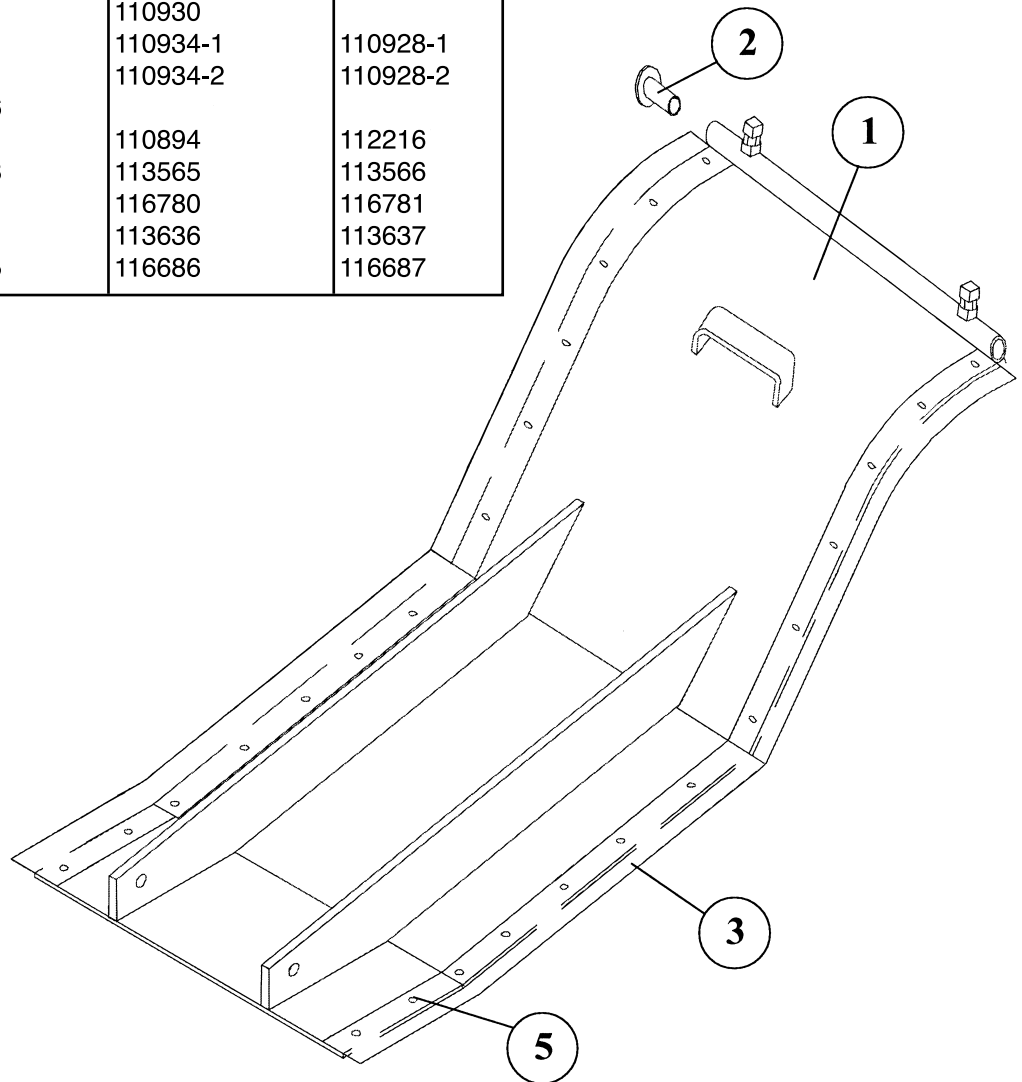
Standard Bed Configuration



RIGID STYLE REAR COVERS

| Ref.# | Part Number | Qty. Req'd | Description |
|-------|-------------|------------|--------------------------------|
| 1 | See Chart | 1 | RIGID STYLE REAR COVER |
| 2 | 61083 | 2 | HINGE PIN |
| 3 | 108732-1 | 1 per | SKIRT, LH |
| | 108732-2 | 1 per | SKIRT, RH |
| 4 | 70150 | 1 per | SPLITTING OUT SHOE (not shown) |
| 5 | 70871 | 26 | BOLT, Plow |

| Bed Top Width | Ref.#1 REAR COVER | | UHMW Liner 1/2" thk (Not Shown) |
|------------------|-------------------|------------------|---------------------------------------|
| | Non Drilled | Drilled for UHMW | |
| 12" | | 117817 | 117819 |
| 20" | 113394 (AR) | 113390 | 113392 |
| 22" | 108899-2 | 113569 | 113570 |
| 22" for AR Liner | 117421 | | 116915 (AR) |
| 24" | 108899-3 | 108899-7 | 110915 |
| 25" | | 108899-9 | 116625 |
| 26" | | 115252 | 115291 |
| 30" | 108899-4 | 117544 | 117545 |
| 42" | | | |
| Full Bed | 108899-1 | 117611 | 117613 |
| Single Row | | 110929 | 111416 |
| Center Filler | | 110930 | |
| LH Filler | | 110934-1 | 110928-1 |
| RH Filler | | 110934-2 | 110928-2 |
| Double Row | 108899-6 | | |
| 48" | 108899 | 110894 | 112216 |
| 62" | 108899-8 | 113565 | 113566 |
| 62" Special | | 116780 | 116781 |
| 64" | | 113636 | 113637 |
| 66" | 108899-5 | 116686 | 116687 |

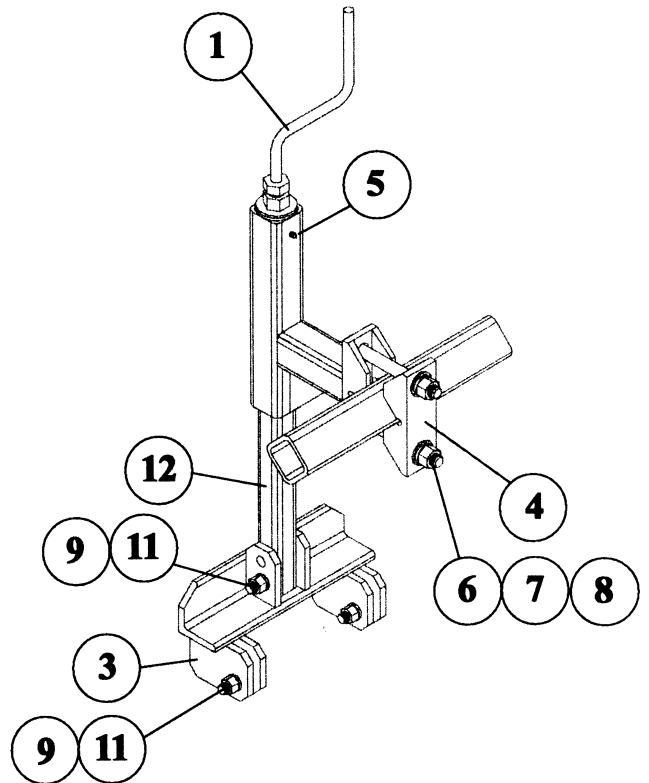
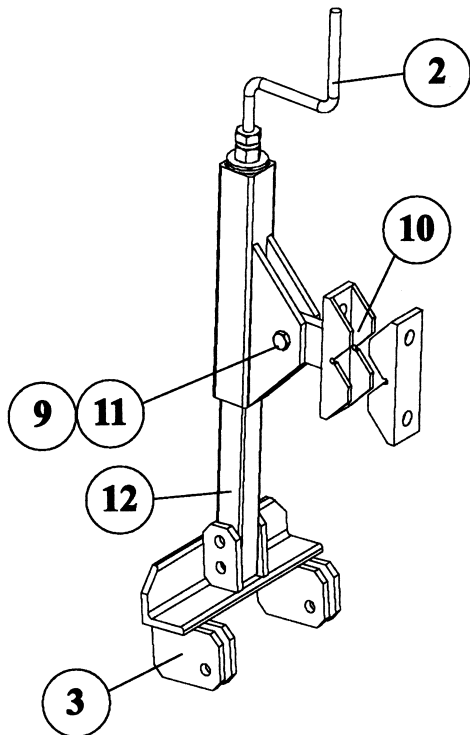


ADJUSTER - RIGID STYLE REAR COVERS

| Ref.# | Part Number | Qty. Req'd | Description |
|-------|-------------|------------|---|
| 1 | 109568 | 1 | DOOR ADJUSTER WELDMNT, Upper, One Piece |
| 2 | 113622 | 1 | DOOR ADJUSTER WELDMNT, Upper, Two Piece |
| 3 | See Chart | 1 | HOLD DOWN WELDMNT |
| 4 | 71131 | 1 | 2" CLAMP HALF |
| 5 | 66919 | 1 | GREASE FITTING |
| 6 | Stock | 2 | BOLT, 5/8" |
| 7 | Stock | 2 | WASHER, 5/8" |
| 8 | Stock | 2 | NUT, 5/8" |
| 9 | Stock | 1 | BOLT, 1/2" |
| 10 | 113623 | 1 | CLAMP HALF WELDMNT |
| 11 | 69261 | 1 | NYLOCK NUT, 1/2" |
| 12 | 109575 | 1 | DOOR ADJUSTER WELDMNT, Lower |

Ref.#3 HOLD DOWN

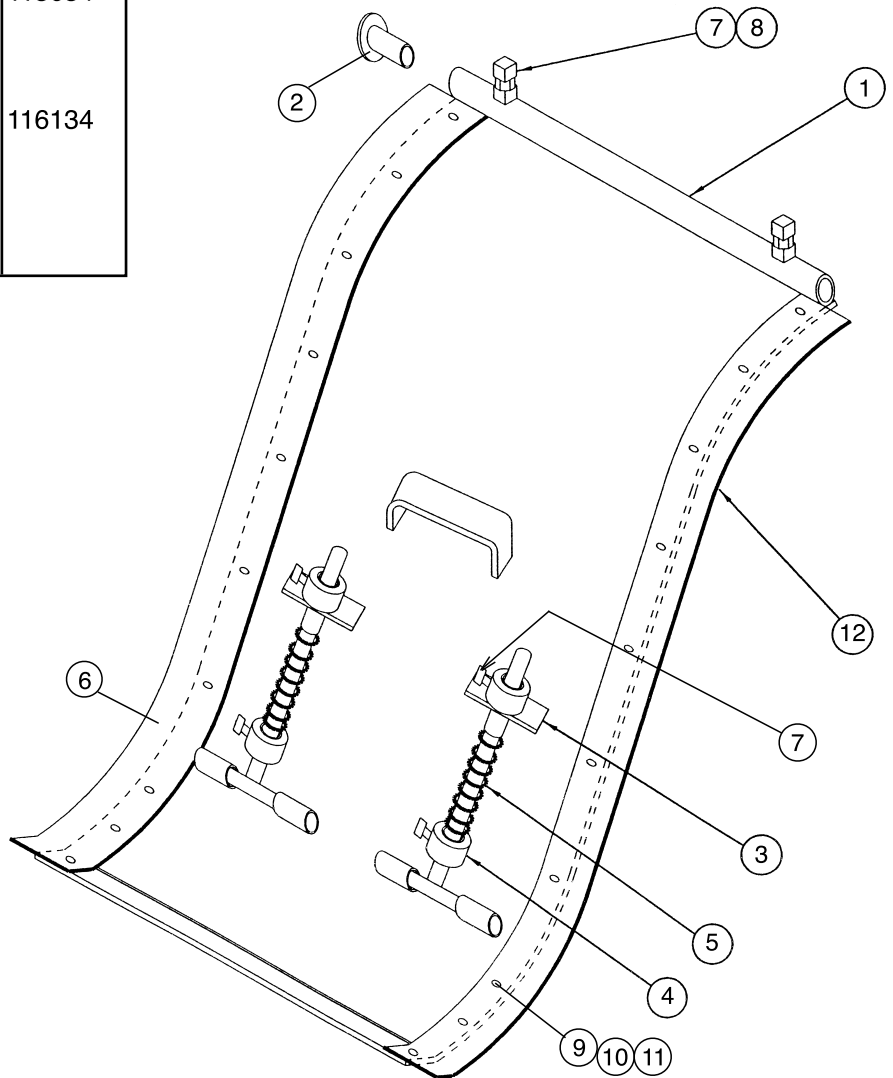
| Model | Part No. |
|-------|----------|
| 30-22 | 113418 |
| 40-22 | 109571 |
| 40-30 | 110007 |
| 60-42 | 117614 |
| 80-62 | 113807 |
| 80-66 | 110007 |



SPRING STYLE REAR COVERS

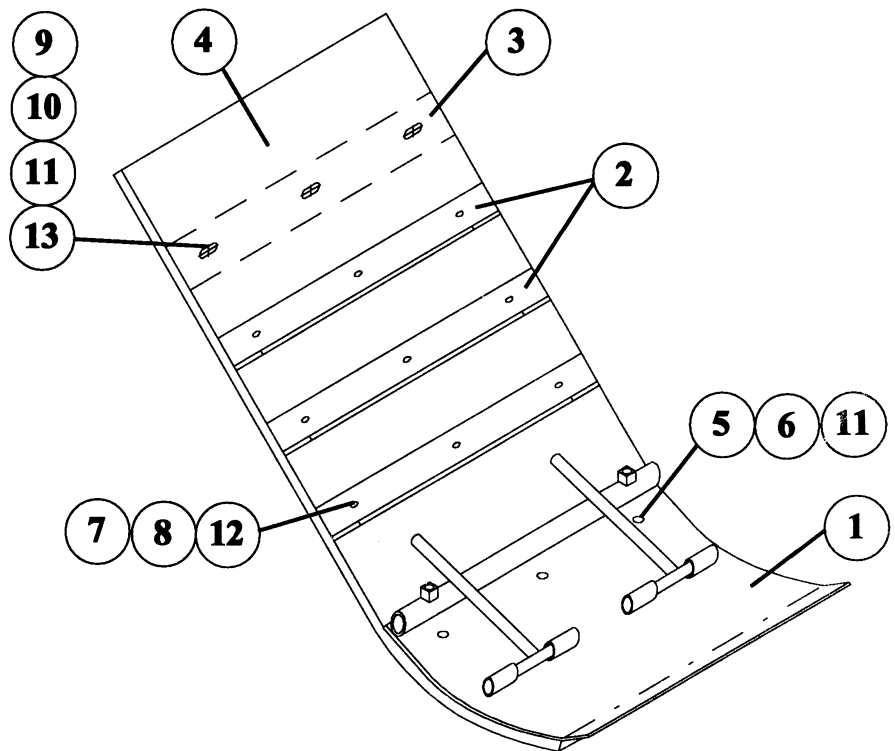
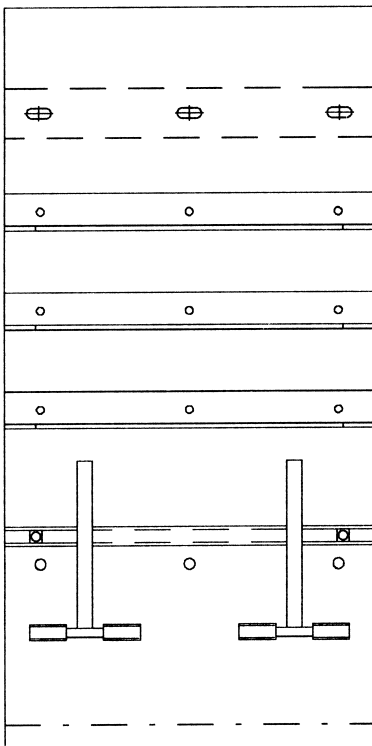
| Ref.# | Part Number | Qty. Req'd | Description |
|-------|-------------|-------------|---------------------------------------|
| 1 | See Chart | 1 | SPRING STYLE REAR COVER ASSEMBLY |
| | See Chart | 1 | SPRING STYLE REAR COVER WELDMENT ONLY |
| 2 | 61083 | 2 | HINGE PIN |
| 3 | 62078 | 1 per Rod | T-HANDLE |
| 4 | 62077 | 2 per Rod | COLLAR, Upper and Lower |
| 5 | 61088 | 1 per Rod | SPRING |
| 6 | 108708-1 | 1 | SKIRT, LH |
| 7 | 70477 | 2+2 per Rod | SET SCREW |
| 8 | 68960 | 2 | JAM NUT |
| 9 | Stock | 20 | BOLT, 1/4" |
| 10 | Stock | 20 | FLAT WASHER, 1/4" |
| 11 | 30200 | 20 | NUT, Top Lock, 1/4" |
| 12 | 108708-2 | 1 | SKIRT, RH |
| 13 | See Chart | 1 | UHMW LINER (not shown) |

| Cover Width | Ref.#1 Cover Assembly | Ref.#1 Cover Weldment | Ref.#13 UHMW |
|-------------|-----------------------|-----------------------|--------------|
| 12" | 107532-1 | 108138-2 | |
| 15" | 107532-10 | 108138-11 | |
| 20" | 107532-2 | 108138-4 | |
| 22" | 107532-3 | 108138-5 | 113634 |
| 24" | 107532-4 | 108138-6 | |
| 26" | 107532-23 | 108138-22 | |
| 42" | 107532-5 | 108138-7 | |
| w/uhmw | 116135-1 | 108138-26 | 116134 |
| 48" | 107532-6 | 108138-8 | |
| 54" | 107532-18 | 108138-9 | |
| 62" | 107532-22 | 108138-21 | |
| 64" | 107532-26 | 108138-25 | |

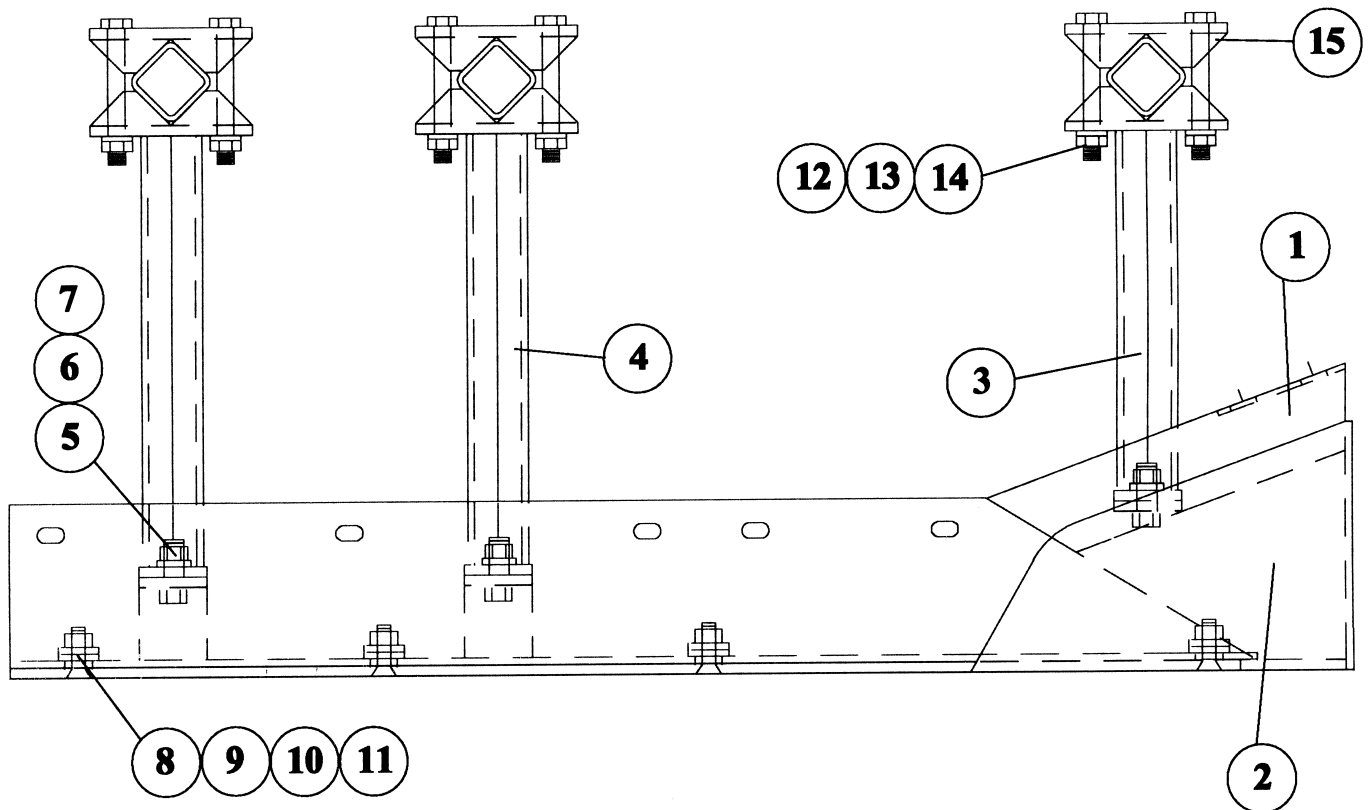


| RUBBER STYLE REAR COVERS | | | |
|--------------------------|-------------|------------|---------------------------------------|
| Ref.# | Part Number | Qty. Req'd | Description |
| 1 | See Chart | | RUBBER STYLE REAR COVER ASSEMBLY |
| 2 | See Chart | 1 | RUBBER STYLE REAR COVER WELDMENT ONLY |
| 3 | See Chart | 3 | ANGLE BRACKET, Rubber Cover |
| 4 | See Chart | 1 | FLAT BAR, Rubber Cover |
| 5 | See Chart | 1 | RUBBER COVER |
| 6 | 65271 | 5 | ELEVATOR BOLT |
| 7 | Stock | 5 | NUT, 3/8" |
| 8 | 65200 | 15 | ELEVATOR BOLT |
| 9 | Stock | 15 | NUT, 1/4" |
| 10 | Stock | 5 | BOLT, 3/8" |
| 11 | Stock | 5 | NUT, 3/8" |
| 12 | Stock | 10 | LOCK WASHER, 3/8" |
| 13 | Stock | 15 | LOCK WASHER, 1/4" |
| 14 | Stock | 5 | FLAT WASHER, 3/8" |
| 15 | 107548 | 2 | T-HANDLE (not shown) |
| 16 | 62077 | 4 | UPPER and LOWER COLLAR (not shown) |
| 17 | 61088 | 2 | SPRING (not shown) |

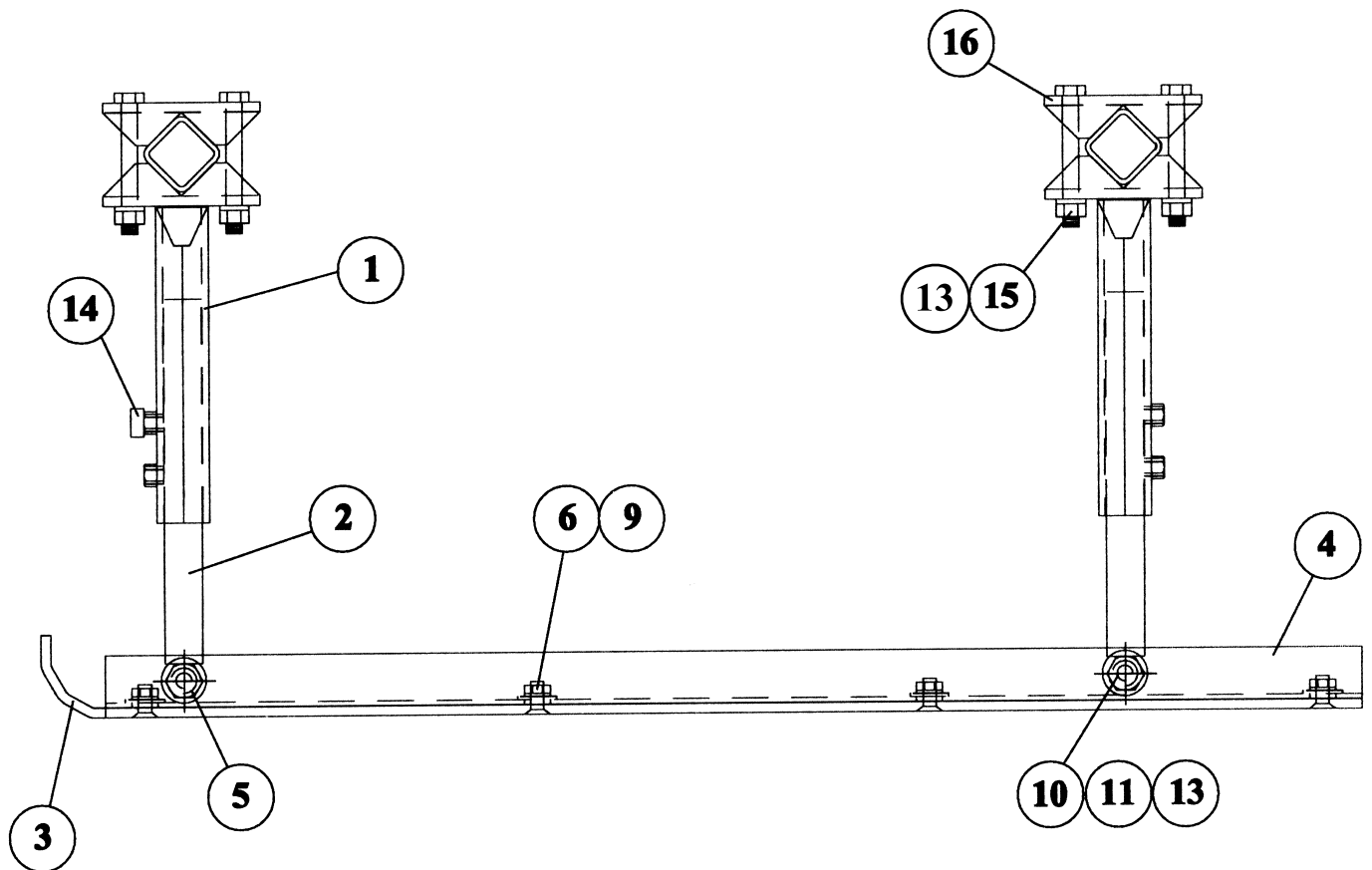
| Model | Complete Assembly | Ref.# 1 Cover Weldment | Ref.# 2 Angle Bracket | Ref.# 3 Flat Bar | Ref.# 4 Rubber Cover |
|-------|-------------------|---------------------------|--------------------------|---------------------|-------------------------|
| 30-12 | 107504-1 | 107597-7 | 107438-7 | 107439-7 | 62361 |
| 38-20 | 107504-3 | 107597-3 | 107438-3 | 107439-3 | 62363 |
| 40-22 | 107504-4 | 107597-4 | 107438-4 | 107439-4 | 62365 |
| 42-24 | 107504-2 | 107597-8 | 107438-8 | 107439-8 | 62396 |
| 60-42 | 107504-5 | 107597-5 | 107438-5 | 107439-5 | 62387 |
| 66-48 | 107504-6 | 107597-6 | 107438-6 | 107439-6 | 62388 |



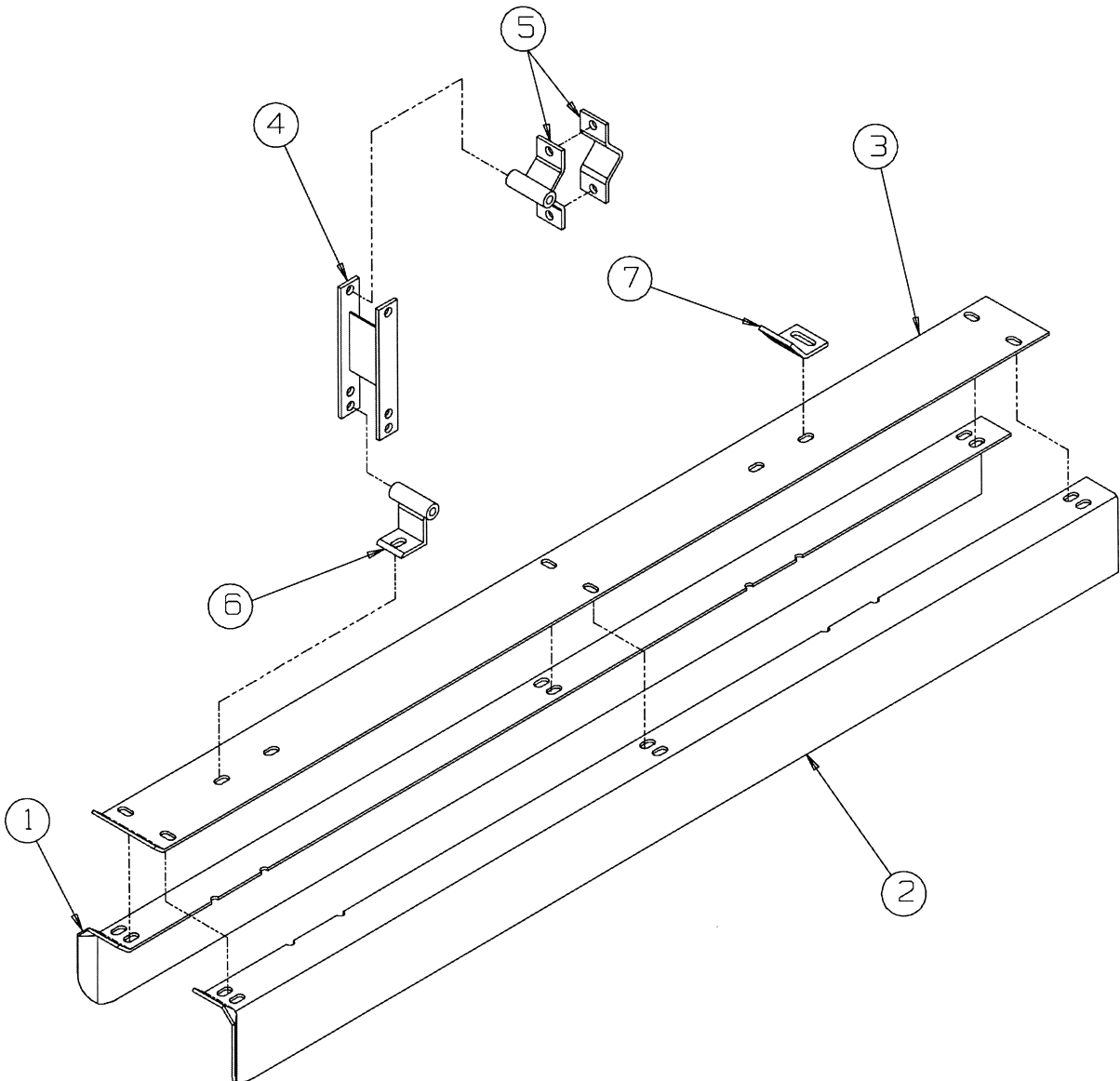
| PONTOONS | | | |
|----------|-------------|------------|--------------------------------------|
| Ref.# | Part Number | Qty. Req'd | Description |
| 1 | 61185 | | PONTOON ASSEMBLY COMPLETE, Inner |
| | 61186 | | PONTOON ASSEMBLY COMPLETE, Outer, RH |
| | 61187 | | PONTOON ASSEMBLY COMPLETE, Outer, LH |
| | 61152 | 1 | PONTOON WELDMENT, Inner |
| | 61154 | 1 | PONTOON WELDMENT, Outer, RH |
| | 61156 | 1 | PONTOON WELDMENT, Outer, LH |
| 2 | 61000 | 1 | WEAR CAP, Inner |
| | 61001 | 1 | WEAR CAP, Outer, RH |
| | 61002 | 1 | WEAR CAP, Outer, LH |
| 3 | 61023 | 1 | STANDARD WELDMENT, Front |
| 4 | 61027 | 2 | STANDARD WELDMENT, Rear |
| 5 | Stock | 6 | BOLT, 1/2" |
| 6 | 72675 | 6 | NUT, Serrated Flange, 1/2" |
| 8 | 61117 | 4 | PLOW BOLT, 7/16" |
| 9 | 72747 | 4 | NUT, Serrated Flange, 7/16" |
| 13 | Stock | 6 | BOLT, 5/8" |
| 14 | 70803 | 6 | NUT, Serrated Flange, 5/8" |
| 15 | 61035 | 3 | 2" HALF CLAMP |



| FLAT RUNNERS | | | |
|--------------|-------------|---------------|---|
| Ref.# | Part Number | Qty. Req'd | Description |
| | 61195 | | FLAT RUNNER ASSEMBLY COMPLETE, with Standards |
| 1 | 62395 | 2 | SLEEVE, Female, Adjustable Standard |
| 2 | 62394 | 2 | SHAFT, Male, Adjustable Standard |
| 3 | 61193 | 1 | FLAT RUNNER, 3-1/2" x 52" |
| | 62058 | 1 | FLAT RUNNER, 5" x 44" |
| 4 | 62644 | 1 | CHANNEL, Flat Runner, 48" |
| 5 | 102435-16 | 2 | PIVOT TUBE |
| 6 | 70549 | 4 | PLOW BOLT |
| 9 | 72747 | 4 | NUT, Serrated Flange, 7/16" |
| 10 | Stock | 2 | BOLT, 5/8" |
| 11 | Stock | 2 | FLAT WASHER, 5/8" |
| 13 | 70803 | 2+4 on clamps | NUT, Serrated Flange, 5/8" |
| 14 | 70478 | 4 | SET SCREW, 1/2" |
| 15 | Stock | 4 | BOLT, 5/8" |
| 16 | 61035 | 2 | 2" HALF CLAMP |



| PLANT TUNNEL ASSEMBLIES | | | |
|-------------------------|-------------|------------|---|
| Ref.# | Part Number | Qty. Req'd | Description |
| | 63007 | | TUNNEL ASSEMBLY, 7" Adjustable, with Hinge & Brackets |
| | 108139 | | TUNNEL ASSEMBLY, 5" Non-Adjustable (not shown) |
| | 107008-1 | | TUNNEL ASSEMBLY, 7" Adjustable, Single Row |
| | 107008-2 | | TUNNEL ASSEMBLY, 7" Adjustable, Double Row |
| 1 | 63097 | 1 | TUNNEL SIDE, RH |
| 2 | 63098 | 1 | TUNNEL SIDE, LH |
| 3 | 63009 | 1 | TOP PLATE, for 5" & 7" AP Style Tunnel, 72" Long |
| | 117814 | 1 | TOP PLATE, for 7" Tunnel, 72" Long |
| 4 | 63093 | 1 per | HINGE BODY (2 each on center tunnel if single row) |
| 5 | 63095 | 1 | CLAMP ASSEMBLY, (2 each on center tunnel if single row) |
| | 107198 | 1 per | CLAMP HALF WELDMENT |
| | 70106 | 1 per | CLAMP HALF |
| 6 | 63094 | 1 per | MOUNT BRACKET, Front |
| | 63115 | 1 per | MOUNT BRACKET, Front, Center Tunnel on Single Row |
| 7 | 63096 | 1 per | MOUNT BRACKET, Rear |
| | 63092 | | HINGE ASSEMBLY COMPLETE (Items 4,5 &6) |



| FURROWING OUT SHOVELS | | | |
|-----------------------|-------------|------------|-----------------------------|
| Ref.# | Part Number | Qty. Req'd | Description |
| 1 | See Chart | As Req'd | OUTER NOSE CONE WELDMENT |
| 2 | See Chart | As Req'd | INNER NOSE CONE WELDMENT |
| 3 | 115065 | 1 | SHOVEL MOUNT WELDMENT |
| 4 | 63056 | 1 | SHOVEL WELDMENT, LH |
| | 63055 | 1 | SHOVEL WELDMENT, RH |
| 5 | 108371 | 1 | SHOVEL, Center |
| 7 | 70873 | 2 | PLOW BOLT |
| 8 | 72747 | 2 | NUT, Serrated Flange, 7/16" |
| 9 | 72580 | 2 | BOLT |
| 10 | Stock | 2 | NUT, 1/2" |

| Furrow Depth/Model | Ref.#1 Outer Nose Cone Weldment | Ref.#2 Inner Nose Cone Weldment | Assembly |
|--------------------|---------------------------------------|---------------------------------------|--|
| 6" Standard | 113412-1 (LH) 113412-2 (RH) | 113411 | 113413 (Inner) 113414-1 (Outer LH) 113414-2 (Outer RH) |
| 8" | 112083-1 (LH) 112083-2 (RH) | 112082 | 112084 (Inner) 112085-1 (Outer LH) 112085-1 (Outer RH) |
| 10" 60-44 | 112411-1 (LH) 112411-2 (RH) | 112410 | 112412 (Inner) 112413-1 (Outer LH) 112413-1 (Outer LH) |

