

Important

Do Not Destroy!

Please Read!

Herd

SURE-FEED BROADCASTER

Herd

MODEL 1200C

CAPACITY:

1200 LBS., 20 CU. FT., 16 BU.

Instructions for:

*Assembly, Mounting, Safety, Seeding,
Operating and Maintenance.*



Repair

Parts List



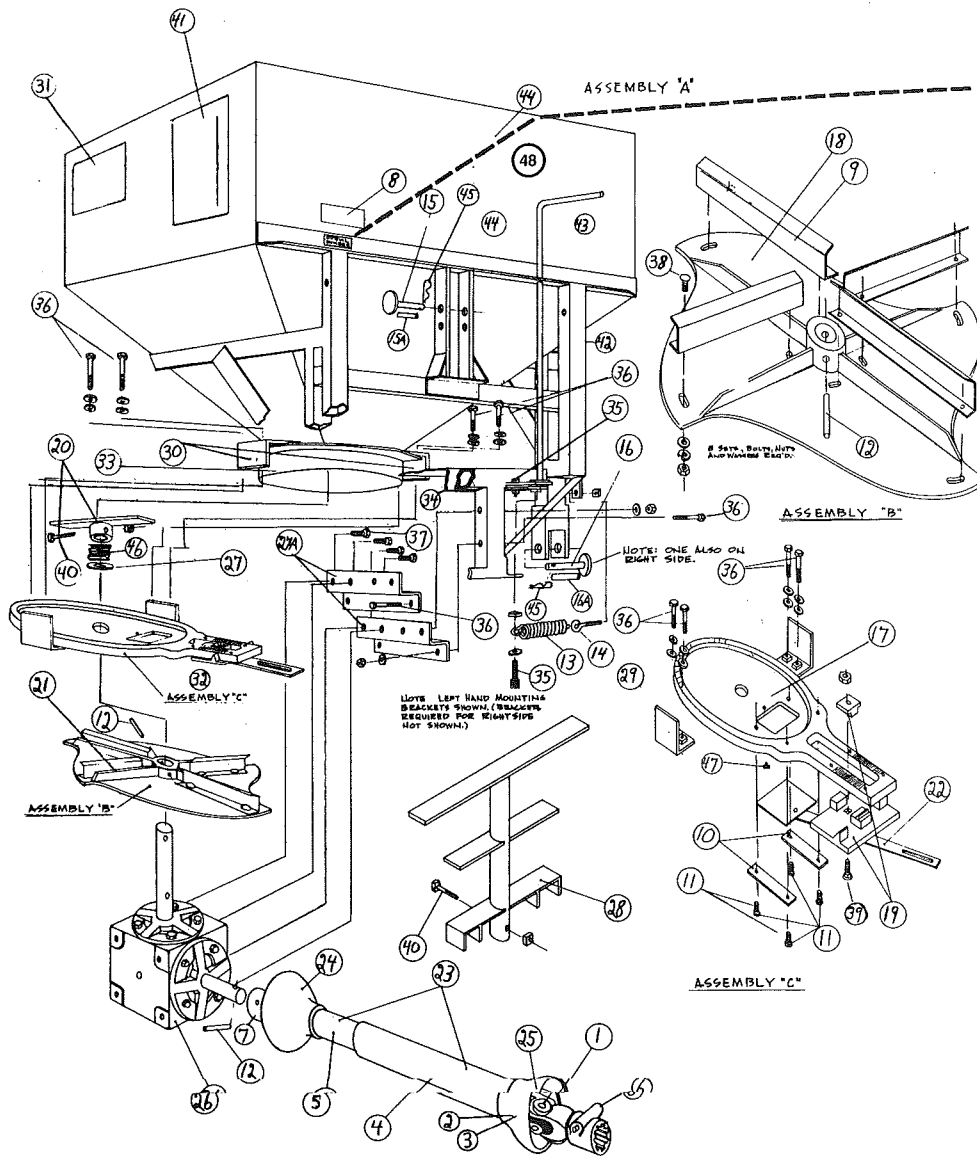
www.herdseeder.com
herdseeder@cqc.com

P.O. BOX 448
2383 South U.S. 35
LOGANSPOBT, INDIANA 46947-0448

PHONE NO. 219-753-6311

FAX NO. 219-722-4106

HERD SEEDER COMPANY, INC.



SERIAL NUMBER LOCATED ON WELDED PLATE, JUST BELOW MODEL NO. DECAL.

Herd
MODEL 1200C



Warning Decal - If missing
Call 219/753-6311 for free replacement.

PARTS FOR MODEL 1200C BROADCASTER SHOWN IN DRAWING:

When ordering parts give the model number which is 1200C and the serial number. See drawing above for location of serial number.

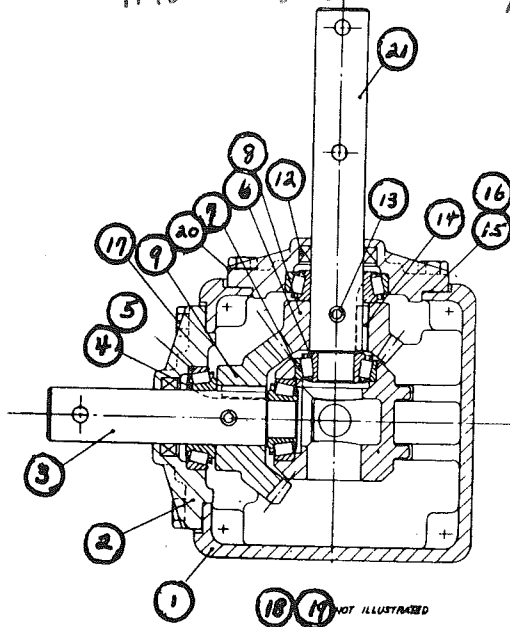
CAUTION: KEEP all guards and shields in place at all times. Disengage power take-off and shut off tractor engine before making any adjustment or repairs to seeder. KEEP hands, fingers and loose clothing well away from any and all moving parts at all times.

DRAWING NO.	PART NO.	NAME	NO. REQUIRED
1.	78	REPAIR KIT "W" FOR P.T.O. SHAFT(PIN & BLOCK TYPE) FOR WEASLER P.T.O.	2
	843	CROSS & BEARING REPAIR KIT (G & G P.T.O. SHAFT)	2
2.	79P	NYLON BEARING FOR PLASTIC SHIELD OF WEASLER P.T.O. SHAFT	2
	46	NYLON BEARING FOR PLASTIC SHIELD OF G & G P.T.O. SHAFT	2
3.	80P	BEARING RETAINER FOR PLASTIC SHIELD OF WEASLER P.T.O. SHAFT	2
	47	BEARING RETAINER FOR PLASTIC SHIELD OF G & G P.T.O. SHAFT	2
4.	92P	PLASTIC SHIELD FOR TRACTOR HALF OF WEASLER P.T.O. SHAFT (INCLUDES #79P & 80P)	1
	95	PLASTIC SHIELD FOR TRACTOR HALF OF G & G - P.T.O. SHAFT (INCLUDES #46 & 47)	1
5.	93P	PLASTIC SHIELD FOR SEEDER HALF OF WEASLER P.T.O. SHAFT (INCLUDES #79P & 80P)	1
	94	PLASTIC SHIELD FOR SEEDER HALF OF G & G P.T.O. SHAFT (INCLUDES #46 & 47)	1
6.	96	YOKE ONLY, FOR TRACTOR HALF OF WEASLER P.T.O. SHAFT	1
	101	YOKE ONLY, FOR TRACTOR HALF OF G & G P.T.O. SHAFT	1
7.	97	YOKE ONLY, FOR BROADCASTER HALF OF WEASLER P.T.O. SHAFT	1
	103	YOKE ONLY, FOR BROADCASTER HALF OF G & G P.T.O. SHAFT	1
8.	98	MODEL NUMBER DECAL FOR 1200C	1
9.	102	FAN BLADE, INCLUDES (2) PART NUMBER 420 BOLTS	4
10.	106	SEED GATE OR CONTROL PLATE GUIDE (REQUIRES 2)	2
11.	107	1/4" X 1/2" HEXHEAD CAPSCREW, SEED GATE GUIDE SCREWS	4

12.	111	5/16" X 2 SPRING PIN FOR POWER TAKE-OFF SHAFT (#150P) AND FAN (#145)	2
13.	116	TENSION SPRING	1
14.	117	EYEBOLT, USED WITH NUMBER 116 TENSION SPRING	1
15.	120	3/4" MOUNTING PIN (INCLUDES NUMBER 118 BUSHING)	1
15A.	118	3/4" X 2" BUSHING FOR NUMBER 120 PIN (TO BUSH PIN TO CATEGORY - 2 SIZE)	1
16.	121	7/8" MOUNTING PIN (INCLUDES NUMBER 119 BUSHING)	2
16A	119	7/8" X 2" BUSHING FOR NUMBER 121 PIN (TO BUSH PIN TO CATEGORY-2 SIZE)	2
17.	144	HOPPER BASE PLATE, WITH 1" BORED HOLE	1
18.	145	FAN BASE ONLY (WITHOUT BLADES) 1" BORED HOLE (INCLUDES # 111 SPRING PIN)	1
19.	146	SEED GAUGE COMPLETE WITH BOLT	1
	146B	BOTTOM PART ONLY OF 146 SEED GAUGE	1
	146U	UPPER PART ONLY OF 146 SEED GAUGE	1
20.	147	REGULAR AGITATOR COMPLETE WITH BOLT & NUT	1
21.	148	FAN COMPLETE WITH NUMBER 111 SPRING PIN AND NUMBER 102 BLADES	1
22.	149	SEED-GATE OR OPENING CONTROL PLATE WITH CONNECTING LINKAGE	1
23.	150P	COMPLETE 25-5/8" PLASTIC SHIELDED POWER TAKE-OFF SHAFT FOR 1-3/8" AND 540 R.P.M. TRACTORS (INCLUDES #111 SPRING PIN)	1
24.	150FP	BROADCASTER HALF ONLY OF 150P POWER TAKE-OFF SHAFT	1
25.	150MP	TRACTOR HALF ONLY OF 150P POWER TAKE-OFF SHAFT	1
26.	2000	GEAR BOX COMPLETE - FOR 540 R.P.M. POWER TAKE-OFF SHAFT	1
	2000M	GEAR BOX COMPLETE - FOR 1,000 R.P.M. POWER TAKE-OFF SHAFT (OPTIONAL)	1
27.	152	1" BORE STEEL SPACE WASHER-USED IN HOPPER ON FAN SHAFT	1
27A.	154	"Z" ANGLE FOR CARRYING GEAR BOX, UPPER AND LOWER - LEFT SIDE	2
	153	"Z" ANGLE FOR CARRYING GEAR BOX, UPPER AND LOWER - RIGHT SIDE (NOT SHOWN)	2
28.	158	LIME AGITATOR W/BOLT-USED IN SPREADING DOLOMITE OR DEHYDRATED LIME-OPTIONAL	1
29.	159	LOWER "L" BASE-CLAMP FOR CLAMPING #144 BASE PLATE TO HOPPER	2
30.	160	UPPER "L" BASE-CLAM (WELDED TO HOPPER) TO HOLD # 144 BASE PLATE TO HOPPER	2
31.	163	FERTILIZER INSTRUCTION DECAL	1
32.	222	"ASSEMBLY C" COMPLETE, INCLUDES: PART NUMBERS, 144, 146, 149, 2-106 & 4-107	1
33.	223	HOPPER BASE RING (WELDED TO BASE OF HOPPER)	1
34.	207	24" DEFLECTOR	1
35.	407	5/16" X 1" HEX HEAD BOLT W/NUT & LOCK WASHER	2
36.	418	1/2" X 3" HEX HEAD BOLT W/NUT & FLAT WASHER	8
37.	419	3/8" X 1" HEX HEAD BOLT (GRADE # 5)	8
38.	420	5/16" X 3/4" CARRIAGE BOLT W/NUT AND LOCK WASHER	8
39.	421	5/16" X 1-1/4" CARRIAGE BOLT W/NUT-USED IN # 146 SEED GAUGE	1
40.	422	5/16" X 1-3/4" HEX HEAD BOLT W/NUT-FOR #147 REGULAR & 158 LIME AGITATORS	1
41.	989C	SEEDING CHART DECAL	1
42.	1085	FRAME FOR 1200C (MUST BE WELDED TO HOPPER)	1
43.	1086	HANDLE ASSEMBLY, LESS SPRING #116 (NON-RETURNABLE)	1
44.	156	HOPPER FOR 1200C (MUST BE WELDED TO FRAME)	1
45.	1004	3" HAIRPIN COTTER	3
46.	1123	STAINLESS STEEL COMPRESSION SPRING-USED BETWEEN AGITATOR AND WASHER	1
47.	1126	1/4" X 3/8" HEX HEAD BOLT (USED ON # 144 PLATE AS STOP FOR SEED GATE)	1
48.	1091	"WARNING" - "SPINNING BLADES" DECAL	1

1148

48" cable for hyd. rem. kit (#1000)

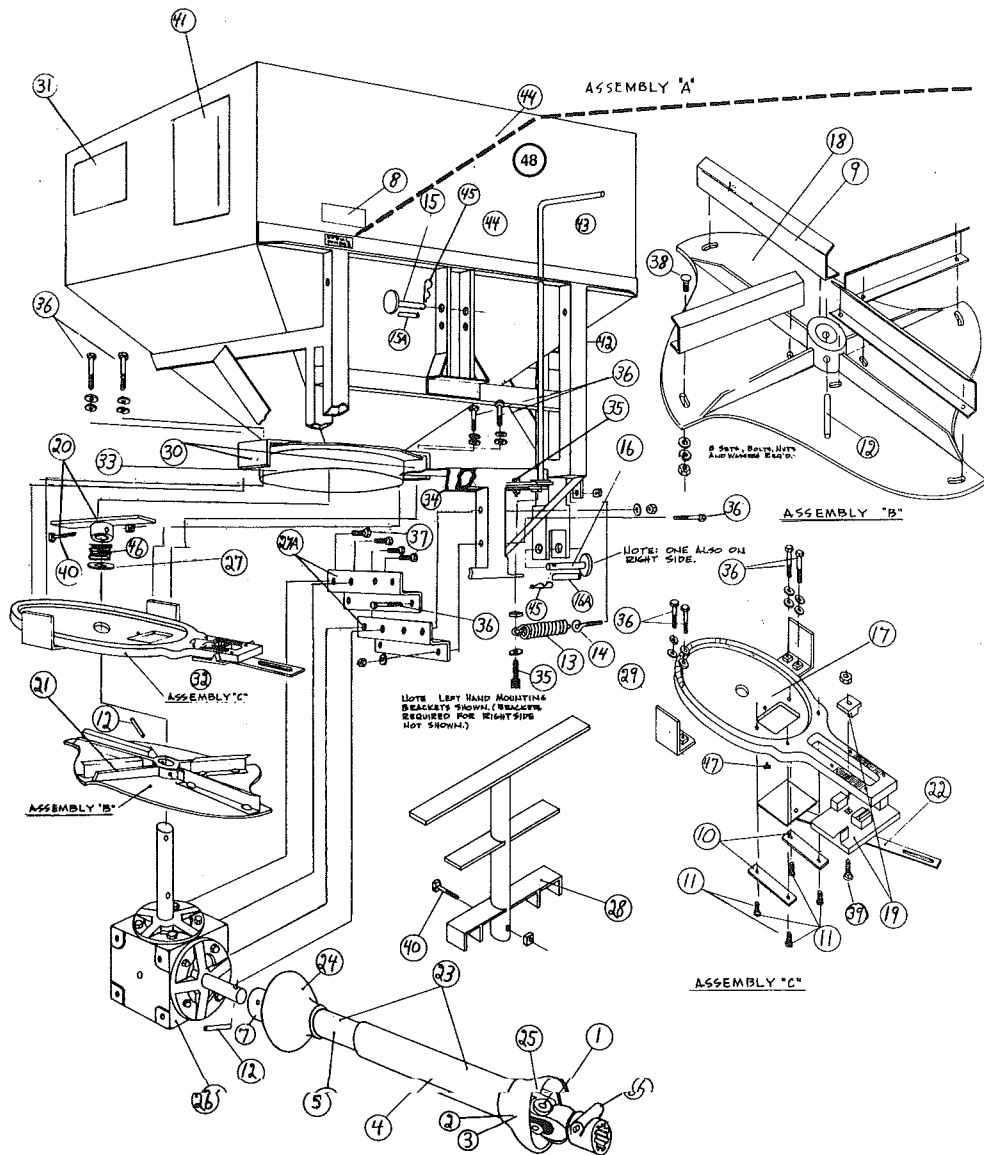


PARTS FOR 12-2000 (OR 12-151)

GEARBOX WITH 1" SHAFTS:

(Used on 1200Cs and 1200Bs After Serial No. 959)

1.	12-2017	HOUSING (12-211A-1)	1
2.	12-2016	CAP (12-211A-3)	2
3.	12-2018	SHORT SHAFT, DRIVE (12-211A-2S1)	1
4.	12-2013	BEARING CONE - LARGE (12-211A-8A) (L44643)	2
5.	12-2012	BEARING CUP - LARGE (12-211A-8B) (L44610)	2
6.	12-2011	BEARING CONE - SMALL (12-211A-9A) (LM11749)	2
7.	12-2010	BEARING CUP - SMALL (12-211A-9B) (LM11710)	2
8.	12-2014	GEAR, STEEL, 14-TOOTH (12-211A-14BS)	1
9.	12-2019	GEAR, STEEL, 19-TOOTH (12-211A-19BS)	1
12.	12-2009	OIL SEAL (12-10-7)	2
13.	12-2005	ROLL PIN (12-10-10)	2
14.	12-2008	KEY (12-211A-15)	2
15.	12-2006	GASKET - .015 (12-10-11)	VAR.
16.	12-2007	GASKET - .005 (12-10-12)	VAR.
17.	12-2002	5/16" x 1" HEXHEAD CAPSCREW (12-211A-13)	8
18.	12-2004	PLAIN PIPE PLUG (12-211A-14)	2
19.	12-2003	VENTED PIPE PLUG (12-211A-14V)	1
20.	12-2001	5/16" LOCKWASHER (12-211A-16)	8
21.	12-2015	LONG SHAFT - VERTICAL DRIVEN (12-211A-252)	1
	12-2020	SHIM	VAR.



SERIAL NUMBER LOCATED ON WELDED PLATE, JUST BELOW MODEL NO. DECAL.

Herd
MODEL 1200C



Warning Decal - If missing
Call 219/753-6311 for free
replacement.

PARTS FOR MODEL 1200C BROADCASTER SHOWN IN DRAWING:

When ordering parts give the model number which is 1200C and the serial number. See drawing above for location of serial number.

CAUTION: KEEP all guards and shields in place at all times. Disengage power take-off and shut off tractor engine before making any adjustment or repairs to seeder. KEEP hands, fingers and loose clothing well away from any and all moving parts at all times.

DRAWING NO.	PART NO.	NAME	NO. REQUIRED
1.	78	REPAIR KIT "W" FOR P.T.O. SHAFT(PIN & BLOCK TYPE) FOR WEASLER P.T.O.	2
	843	CROSS & BEARING REPAIR KIT (G & G P.T.O. SHAFT)	2
2.	79P	NYLON BEARING FOR PLASTIC SHIELD OF WEASLER P.T.O. SHAFT	2
	46	NYLON BEARING FOR PLASTIC SHIELD OF G & G P.T.O. SHAFT	2
3.	80P	BEARING RETAINER FOR PLASTIC SHIELD OF WEASLER P.T.O. SHAFT	2
	47	BEARING RETAINER FOR PLASTIC SHIELD OF G & G P.T.O. SHAFT	2
4.	92P	PLASTIC SHIELD FOR TRACTOR HALF OF WEASLER P.T.O. SHAFT (INCLUDES #79P & 80P)	1
	95	PLASTIC SHIELD FOR TRACTOR HALF OF G & G - P.T.O. SHAFT (INCLUDES #46 & 47)	1
5.	93P	PLASTIC SHIELD FOR SEEDER HALF OF WEASLER P.T.O. SHAFT (INCLUDES #79P & 80P)	1
	94	PLASTIC SHIELD FOR SEEDER HALF OF G & G P.T.O. SHAFT (INCLUDES #46 & 47)	1
6.	96	YOKE ONLY, FOR TRACTOR HALF OF WEASLER P.T.O. SHAFT	1
	101	YOKE ONLY, FOR TRACTOR HALF OF G & G P.T.O. SHAFT	1
7.	97	YOKE ONLY, FOR BROADCASTER HALF OF WEASLER P.T.O. SHAFT	1
	103	YOKE ONLY, FOR BROADCASTER HALF OF G & G P.T.O. SHAFT	1
8.	98	MODEL NUMBER DECAL FOR 1200C	1
9.	102	FAN BLADE, INCLUDES (2) PART NUMBER 420 BOLTS	4
10.	106	SEED GATE OR CONTROL PLATE GUIDE (REQUIRES 2)	2
11.	107	1/4" X 1/2" HEXHEAD CAPSCREW, SEED GATE GUIDE SCREWS	4

Seeding Chart

SEED	OPEN WIDTH	WIDTH OF SPREAD	POUNDS PER ACRE - SPEED IN M.P.H.					
			5 M.P.H.	6 M.P.H.	7 M.P.H.	8 M.P.H.	9 M.P.H.	10 M.P.H.
ALFALFA	1/8"	28 FT.	12 LBS.	10.8 LBS.	9.6 LBS.	8.4 LBS.	7.2 LBS.	6 LBS.
BLUE GRASS	1/4"	18 FT.	16	14.4	12.8	11.2	9.6	8
BROME GRASS	1/4"	10 FT.	7	6.3	5.6	4.9	4.2	3.5
CLOVER	1/8"	28 FT.	12	10.8	9.6	8.4	7.2	6
HAIRY VETCH	1/4"	40 FT.	33	29.7	26.4	23.1	19.8	16.5
HULLED LESPEDEZA	1/8"	30 FT.	13	11.7	10.4	9.1	7.8	6.5
MEADOW FESCUE	1/4"	18 FT.	19	17.1	15.2	13.3	11.4	9.5
OATS	1/2"	33 FT.	86	77.4	68.8	60.2	51.6	43
ORCHARD GRASS	1/4"	12 FT.	12	10.8	9.6	8.4	7.2	6
PIPER SUNDAN - SWEET	1/4"	36 FT.	32	28.8	25.6	22.4	19.2	16
RICE	1/2"	33 FT.	180	162	144	126	108	90
RYE GRASS	1/4"	18 FT.	13.5	12.2	10.8	9.4	8.1	6.8
RYE	1/2"	34 FT.	132	118.8	105.6	92.4	79.2	66
SOYBEANS	3/4"	40 FT.	120	108	96	84	72	60

(1 LB. - 0.45 KG
8 LBS. - 3.6 KG
14 LBS. - 6.3 KG

1 MILE - 1.6 KM
4 MILE - 6.4 KM
6 MILE - 9.6 KM

1 FOOT - 30 CM
12 FEET - 3.6 M
18 FEET - 5.4 M

MAINTENANCE:

1. BEFORE STORING THE MODEL 1200C, IT SHOULD BE WASHED OUT THOROUGHLY WITH WATER, MAKE SURE THAT ALL FERTILIZER RESIDUE IS REMOVED. FOR CLEANING AT THE BASE OF THE HOPPER AND TO CLEAN THE BASE PLATE # 144, LOOSEN THE 4 HEX HEAD CAP SCREWS PART #418 THAT HOLDS THE # 144 BASE TO THE BOTTOM OF THE HOPPER, SO THERE IS SUFFICIENT SPACE TO WASH OUT ALL CORROSIVE MATERIAL. WHEN THE PARTS ARE DRY, OIL THEM THOROUGHLY, RETIGHTEN THE #418 CAP SCREWS WHEN FINISHED.
2. WE ALSO RECOMMEND THAT YOU SEPARATE THE TRACTOR END OF THE P.T.O. SHAFT (PART #150MP) FROM THE SEEDER END OF THE PTO SHAFT (PART # 150FP) AND GREASE THEM THOROUGHLY FOR STORAGE. LEAVE THE TWO SECTIONS OF THE PTO SHAFT SEPARATE DURING STORAGE TO PREVENT THEM FROM SEIZING.

TROUBLE-SHOOTING TIPS:

1. IF THE SPREAD PATTERN IS NOT AS WIDE FOR YOUR SEEDER AS WHAT IS SHOWN ON THE SEED OR FERTILIZER CHART FOR A GIVEN SEED, CHECK TO MAKE SURE ONE OF THE SPRING PINS #111 IS NOT SHEARED.
2. OTHER CAUSES OF POOR SPREAD PATTERN:
 - A. BENT OR BROKEN FAN (#145) OR FAN BLADES (#102)
 - B. FAN BLADES (#102) MOVED FROM FACTORY SETTING. (BLADES SHOULD BE IN LINE WITH LONG MARKS ON FAN.)
 - C. THE DISTANCE BETWEEN THE FAN (#148) AND THE BASE (#144) SHOULD NEVER BE FARTHER THAN 2 5/16" OR CLOSER THAN 2 5/32", OR IT WILL AFFECT THE SPREAD PATTERN.
 - D. DO NOT RUN THE TRACTOR P.T.O. SPEED OVER 560 R.P.M. BECAUSE TOO MUCH SPEED CAN CAUSE THE SPREAD PATTERN TO BE UNEVEN.
 - E. DO NOT RUN THE TRACTOR P.T.O. SPEED BELOW 530 R.P.M. OR IT WILL RESULT IN A NARROW SPREAD PATTERN.
3. THE MODEL 1200C BROADCASTER SHOULD RUN LEVEL OR TILTED SLIGHTLY FORWARD TOWARD THE TRACTOR. ALSO MAKE SURE THAT ONE SIDE OF THE SEEDER IS NOT LOWER THAN THE OTHER.
4. IF THE SPREAD PATTERN IS TOO HEAVY TO THE RIGHT SIDE, MOVE THE #144 BASE PLATE TO A HIGHER NUMBER AND IF THE SPREAD PATTERN IS TOO HEAVY TO THE LEFT SIDE, MOVE THE #144 BASE PLATE TO A LOWER NUMBER.
5. WHEN THE MATERIAL BEING SPREAD DOES NOT FEED EVENLY:
 - A. CHECK THE MATERIAL TO SEE IF ANY FOREIGN MATTER IS IN THE HOPPER AND BLOCKING THE OPENING OR SEED-GATE #149.
 - B. CHECK TO SEE THAT THE AGITATOR #147 IS BENT DOWN CLOSE TO THE BASE PLATE #144 BUT DO NOT BEND IT SO MUCH THAT THE AGITATOR STRIKES THE BASE PLATE WHEN ROTATING.
 - C. CHECK TO SEE THAT THE OPENING IS NOT SET TOO CLOSE FOR THE SIZE OF MATERIAL BEING SPREAD. TO OVERCOME THIS, SET THE OPENING LARGER AND DRIVE FASTER OR ORDER PART #149S WHICH IS A SPECIAL SEED-GATE WITH TEETH ON ITS EDGE TO RESTRICT THE FLOW OF SEED AND ALLOW THE SEED-GATE TO BE OPENED WIDER.
 - D. DO NOT RUN THE FAN FOR ANY LENGTH OF TIME WITH THE OPENING GATE (#149) CLOSED, OR THE AGITATOR WILL GRIND UP THE MATERIAL AND PACK OVER THE OPENING GATE....CAUSING POOR FEEDING OF THE MATERIAL. YOU CAN OVER-AGITATE THE MATERIAL IF YOU ARE NOT CAREFUL.
 - E. IF YOU NEED TO CONVERT THE 1200C FROM A 540 R.P.M. GEARBOX TO A 1,000 R.P.M. GEARBOX TO GO ON A 1,000 R.P.M. TRACTOR P.T.O. PLEASE CALL THE FACTORY FOR MORE INFORMATION AT: 219-753-6311.