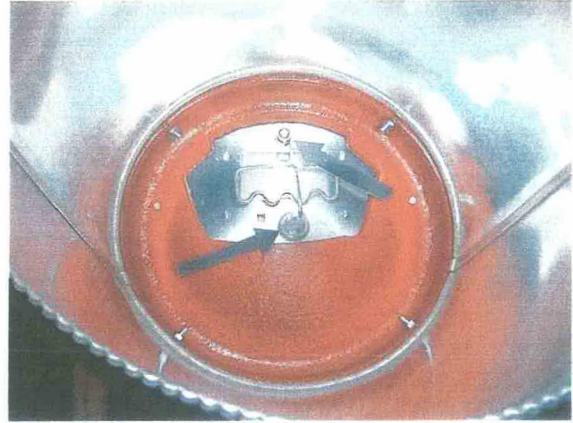
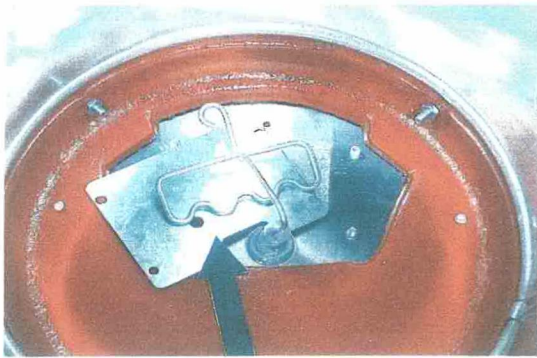


Procedure To Change Blocking Plates for Fire Ants

A. See flow charts to determine which of the three blocking plates you need to use. It is sent from the factory with #1 in place.

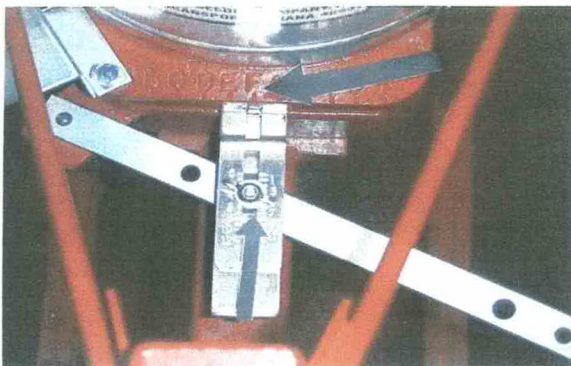
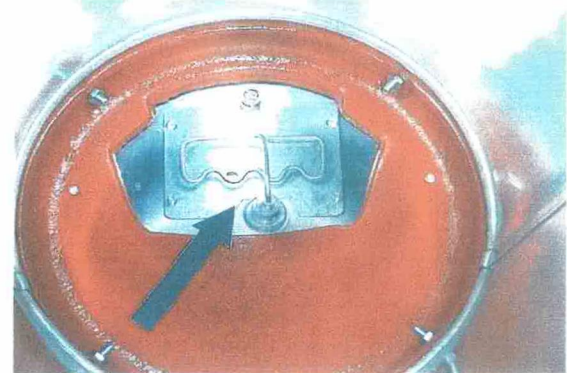
B. TO REMOVE AND REPLACE THE BLOCKING PLATE, PLEASE FOLLOW THE FOLLOWING PROCEDURE.

1. Remove bushing that top arrow is pointing to and save. (See photo at right)
2. By sliding agitator to one side as shown in photo below, you can then remove or replace the blocking plate. (See photo below)



3. When installed, the blocking plate should be positioned on the screws as in photo below. The notch should be around the nipple as shown. If it is in upside down, the notch will not be in this position. The bushing and screw should be put in place. (See photo below)

4. The wing nut on the pivot (bottom arrow) plate should be loosened and the stop slid to the location in photo below. The gate must open far enough for the material to flow unobstructed through the hole onto the fan. (See photo below.)



The base plate is shipped from the factory on the letter F, (top arrow in photo on left). This is the correct position for a centered spread with this style blocking plate. Make sure it is on F.

5. At this point, the broadcaster is ready to run with material. Please refer to the chart for the numbered plate you are using to check your flow rate.

THIS MACHINE MUST BE WASHED WITH SOAP AND WATER A MINIMUM OF EVERY THREE (3) DAYS.

CLINCH

		PLATE #1			
				Time necessary to cover 100 ft.	
MPH	Width	Oz. In 30 sec.	Lbs. per acre	at the speed indicated	
10	20'	3.2	1	6.8 seconds	
9	20'	2.8	1	7.6 seconds	
8	20'	2.7	1	8.5 seconds	
		PLATE #2			
				Time necessary to cover 100 ft.	
MPH	Width	Oz. In 30 sec.	Lbs. per acre	at the speed indicated	
7	20'	2.3	1	9.7 seconds	
6	20'	1.9	1	11.4 seconds	
5	20'	1.6	1	13.6 seconds	
		PLATE #3			
				Time necessary to cover 100 ft.	
MPH	Width	Oz. In 30 sec.	Lbs. per acre	at the speed indicated	
5	20'	1.6	1	13.6 seconds	
4	20'	1.2	1	17.0 seconds	
3	20'	1	1	22.7 seconds	
*During factory testing this speed was most likely to be used with this # plate for 1# per acre					
FOR FURTHER CALIBRATIONS:					
Take 3.09375 times the amount of material you have caught for 30 seconds. The answer you get will be the mph you must run to put on 1# per acre.					
HERD SEEDER COMPANY, INC.					
P.O. BOX 448 LOGANSPORT, IN 46947					
574-753-6311 Phone					
574-722-4106 FAX					
www.herdseeder.com					