



Assembly Instructions for Pumps

19-01-01
Edition No. 1

QC. Taastrup
Erik Rasmussen

821591 Pump 463/10 – 540 r/min Nitril De-icing.



Diaphragm No. 242426
Nitril



Upper disc No. 161175 RF
M 12 x 30 No. 430938 RF



M 12 x 30 is tightened with
80 NM. – 0 + 20 %



Assembly Instructions for Pumps

19-01-01
Edition No. 1

QC. Taastrup
Erik Rasmussen



To fit the diaphragm correctly it is important to turn the crank shaft so the diaphragm is lifted above the pump housing by 2 – 3 mm.

If this procedure is not carried out correctly, the diaphragm can be damaged and cause leakage between pump housing and diaphragm cover.



Lubricate the diaphragm outer seal with a vegetable oil.



Assembly Instructions for Pumps

19-01-01
Edition No. 1

QC. Taastrup
Erik Rasmussen

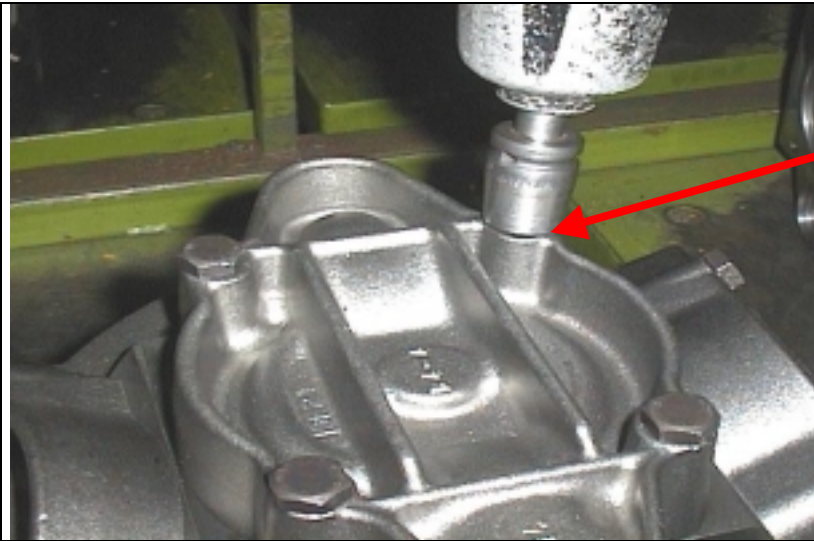
	<p>Valve with stainless seat No. 72094700</p> <p>O-ring 44,04 x 3,53 Nitril No. 242510</p>
	<p>Pressure valve.</p> <p>Suction valve.</p> <p>When fitting pump valves ensure all inlet valves are pointing up into the diaphragm cover and all pressure valves point down into the pump.</p>
	<p>Valve cover No. 111614</p> <p>M 12 x 60 No. 430312</p>



Assembly Instructions for Pumps

19-01-01
Edition No. 1

QC. Taastrup
Erik Rasmussen



M 12. When tightening the diaphragm cover ensure to cross tighten the 4 bolts to ensure correct assembly.

80 NM. - 0 + 20 %