

Tillage Haulage Landscaping Seeding & Plantation

Crop Protection Harvest Post Harvest

Solutions...



31-08-2017

**BERI UDYOG PVT LTD**

Corporate Office:

Plot No. 235-236 & 238-240, Sec-3, HSIIDC, Karnal- 132001 (Haryana), India

+91 184 2221571/ 72/ 73 info@fieldking.com, www.fieldking.com

# FIELDKING

## Rotary Tiller



► Operator Manual ► Service Manual ► Part Catalogue

# CONGRATULATIONS!

You have invested in one of the best implements of its type in the market today.

The care you give your "FIELDKING" implement will greatly determine your satisfaction with its performance and its service life. A careful study of this manual will give you a thorough understanding of your new implement before operating.

If your manual is lost or destroyed, "FIELDKING" will be glad to provide you a new copy. Visit to nearest dealership & get a copy. Most of our manuals can also be downloaded from our website at [www.fieldking.com](http://www.fieldking.com).

As an authorized "FIELDKING" dealer, we stock genuine "FIELDKING" parts which are manufactured with the same precision and skill as our original equipment. Our trained service persons are well informed on methods required to service "FIELDKING" equipments and are ready to help you.

Should you require additional information or assistance, please contact us.

YOUR AUTHORIZED

FIELDKING DEALER

BECAUSE "FIELDKING" MAINTAINS AN ONGOING PROGRAMME OF PRODUCT IMPROVEMENT, WE RESERVE THE RIGHT TO MAKE IMPROVEMENTS IN DESIGN OR CHANGE IN SPECIFICATION WITHOUT INCURRING ANY OBLIGATION TO INSTALL THEM ON UNITS PREVIOUSLY SOLD. BECAUSE OF THE POSSIBILITY THAT SOME PHOTOGRAPHS IN THIS MANUAL WERE TAKEN OF PROTOTYPE MODELS, PRODUCTION MODELS MAY VARY IN SOME DETAIL. IN ADDITION, SOME PHOTOGRAPHS MAY SHOW SHIELDS REMOVED FOR THE PURPOSE OF CLARITY. NEVER OPERATE THIS IMPLEMENT WITHOUT ALL SHIELDS IN PLACE.

## TO THE PURCHASER

This manual contains valuable information about your new "FIELDKING" rotary tiller. It has been carefully prepared to give you helpful suggestions for operating, adjusting, servicing and ordering spare parts.

Keep this manual in a convenient place for quick and easy reference. Study it carefully. You have purchased a dependable and sturdy rotary tiller but only by proper care and operation you can expect to receive the service and long life designed and built into it.

Sometime in the future your rotary tiller may need new parts to replace which are worn out or broken. If so, go to your dealer and provide him equipment's detail like model and part number.

## CUSTOMER INFORMATION

Name \_\_\_\_\_

Purchased From \_\_\_\_\_

Date of Purchase \_\_\_\_\_

Model No. \_\_\_\_\_

Serial No. \_\_\_\_\_

## PURCHASER / OPERATOR'S RESPONSIBILITY

1. Read and understand the information contained in this manual.
2. Operate, lubricate, assemble and maintain the equipment in accordance with all instructions and safety procedures in this manual.
3. Inspect the equipment and replace or repair any parts that are damaged or worn out which under continued operation would cause damage, wear to other parts, or cause a safety hazard.
4. Return the equipment or parts to the authorized "FIELDKING" dealer, from where it was purchased, for service or replacement of defective parts that are covered by warranty. (The "FIELDKING" Factory may inspect equipment or parts before warranty claims are honored.)
5. All costs incurred by the dealer for traveling to or transporting the equipment for warranty inspection and claims will be borne by the customer.

## **1. TECHNICAL DATA**

- 1.1 Introduction
- 1.2 Warning signal
- 1.3 Danger signal
- 1.4 Personal protective equipment
- 1.5 Equipment safety guidelines
- 1.6 Indicator signal
- 1.7 Identification

## **2. SAFETY AND ACCIDENT PREVENTIONS**

## **3. INSTRUCTIONS FOR OPERATOR**

- 3.1 Machines supplied partly broken-down
- 3.2 Before use
- 3.3 Hitching to the tractor
- 3.4 Cardan shaft
- 3.5 Working depth
- 3.6 Chain tensioner
- 3.7 Hoe blades
- 3.8 In working
- 3.9 How it works
- 3.10 Troubleshooting hints for the tractor operator
- 3.11 Parking

## **4. MAINTENANCE**

- 4.1 Every 8 work hours
- 4.2 Every 50 work hours
- 4.3 Every 200 work hours
- 4.4 Storage
- 4.5 Lubrication

## **5. SERVICING TIPS**

### **Parts Catalogue**

### **NOTE:**

BERI UDYOG PVT. LTD reserves the right to modify machine design and specifications provided herein without any preliminary notice. Information provided herein is of descriptive nature. Performance quality may depend on soil quality.

# 1. TECHNICAL DATA

## 1.1 INTRODUCTION

This handbook contains operating and maintenance instructions plus a list of the parts supplied as spare parts for the rotary tiller.

Rotary tiller can only operate by means of a **cardan shaft** engaged to the PTO of an agricultural tractor equipped with lift and universal three point hitch.

Besides working the soil in open areas, the particular and specific design of this implement makes it ideal for working between the rows of orchards and vineyards etc. Regular and satisfactory operations together with economic and long lasting use of the implement depend on the compliance with the instructions given in this handbook. It is therefore advisable to strictly comply with the following instructions in order to prevent faults that could jeopardize the correct and long lasting operation of the implement.

Compliance with the instructions in this handbook is also important though **manufacturer declines all and every responsibility for damage to persons or property caused by negligence and failure to comply with these instructions.**

The manufacturer shall, however, remain at the customer's disposal for immediate and thorough assistance together with anything else that may be required in order to ensure the correct operation and maximum efficiency of the implement.

## 1.2 WARNING SIGNAL

### REMEMBER SAFETY FIRST

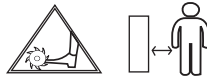
Operator must read the instruction manual before operating the rotary tiller.

Do not allow anyone to operate this equipment who has not fully read and comprehended this manual and who has not been properly trained in the safe operation of the equipment.



## 1.3 DANGER SIGNAL

1. Sharp objects could be thrown up keep a safe distance from the rotary tiller.
2. Risk of injury to leg
3. Keep away from the moving parts. Never remove guards while working.
4. Your implement is not designed to carry passengers - NO RIDER
5. Never allow anyone to stand between the tractor and implement while an operator is backing up to the implement.
6. Keep away from the cardan shaft. Keep away from the moving parts.



## 1.4 PERSONAL PROTECTIVE EQUIPMENT



1. Do not wear loose fitting dress, dangling jewellery. Long hair should be tied back to avoid entangling.
2. Wear appropriate footwear. Soft cloth shoes or sandals are not safe around any type of equipment.
3. Wear hearing protection such as earplugs or other devices that will minimize sounds. But will not interfere with your ability to hear traffic or other noises that may alert you to potential hazards.
4. Do not operate any machinery while talking on a cell phone or other portable devices such as MP3 players, as these are considered distractions- operating any farm equipment requires the operator's full attention.

## 1.5 EQUIPMENT SAFETY GUIDELINES



1. Read safety instructions for both the tractor and this tiller before use.
2. Never exceed the advised limits of the tractor or the tiller.
3. This equipment is dangerous to children and those unfamiliar with its operation. **DO NOT ALLOW** children to operate or play around equipment.
4. Operator should be an adult who is familiar with operating the tractor and the tiller.

Operator should be physically and mentally fit before operating machinery. Fatigue, stress, alcohol and drugs may impair the ability for safe farm machinery operation.

## 1.6 INDICATOR SIGNALS

1. Coupling point for lifting (Indicating the maximum capacity)
2. Oil fill plug.
3. Oil drain Plug.
4. Oil Level Plug.
5. Greasing point.
6. Identification Plate.

## 1.7 IDENTIFICATION

Each individual rotary tiller has an identification plate indicating the following details, which should be copied into the handbook along with the date of purchase:

1. Machine type.
2. Machine model.
3. Serial number.
4. Year of manufacture.

## 2. SAFETY AND ACCIDENT PREVENTION

Pay great attention to the danger signal indicated in this handbook. There are three types of danger signals:

**Danger:** This signal warns for serious injuries, death or long-term health risks would be caused by failure to correctly carry out the described operations.

**Warning:** This signal warns for serious injuries, death or long-term health risks that can be caused by failure to correctly carry out the described operations.

**Caution:** This signal warns for damage to the machine could be caused by failure to carry out the described operations.

Thoroughly read all the instructions before using the rotary tiller. Contact the technicians of your authorized dealer in case of doubt. The manufacturer declines all and every responsibility for injury/accidents in event of non-compliance of following safety and accident preventing provisions.

- 1) Comply with the instructions given by the danger symbols in this handbook and affixed to the steerage hoe itself.
- 2) Never touch any moving part.
- 3) Minor maintenance and adjustments to the rotary tiller must always be carried out when the engine is off and the tractor braked.
- 4) It is absolutely forbidden to carry passengers or any animals on the rotary tiller.
- 5) It is absolutely forbidden for a person without a driving license, untrained person or those in precarious health conditions to drive the tractor with the rotary tiller mounted.
- 6) Strictly comply with all the recommended accident preventing measures described in this handbook.
- 7) Assembly of a rotary tiller on the tractor will shift the weights on the axles. It is therefore advisable to add weights to the front part of the tractor in order to balance the weights on the axles themselves.
- 8) The coupled implement may only be controlled through the cardan shaft complete with the necessary safety devices for overloads and with the appropriate chains. Keep away from the cardan shaft while it is turning.
- 9) Before starting the tractor and implement, always check that all safety devices guarding transport and use are in perfect conditions.
- 10) The instruction labels affixed to the machine give useful advice on how to prevent accidents.
- 11) Always comply with the Highway Code in force in your country, when travelling on public roads.
- 12) Comply with the maximum permissible weight on the axle of the tractor, the total adjustable weight, transport regulations and the highway code.
- 13) Always be familiar with the controls and their operation before starting to work.
- 14) Avoid sharp turns as this may cause implement to ride up on the tractor's wheels and might result in serious injury and damage to your equipment.
- 15) As indicated, couple the implement to a tractor of adequate power and configuration, using a device (lift) conforming to the precautions.
- 16) Take the utmost care during the implement coupling and release phases.
- 17) Any accessories for transport must be equipped with adequate signals and guards.
- 18) Never leave the driving seat while the tractor is moving.
- 19) It is very important to remember that the road holding, steering and braking capacity may be notably influenced by the presence of towed or mounted implement.
- 20) Always take care of the centrifugal force exercised by the position of the center of gravity, when turning corners with the implement mounted.
- 21) Before engaging the PTO, check that the rpm rate is the same as prescribed. Never exchange the 540-rpm rate for 1000-rpm or vice versa.
- 22) It is absolutely forbidden to stand within the operative range of the machine where there are moving parts.
- 23) Before leaving the tractor, lower the implement coupled to the lift unit, stop the engine, engage the hand brake and remove the ignition key from the control panel.

- 24) It is strictly prohibited to stand between the tractor and the implement when the engine is running and the cardan shaft is engaging without having first engaged the hand brake and placing a block or stone under the wheels to prevent them from moving.
- 25) Always set the lift control lever to the locked position before coupling or releasing the equipment from the three-point coupling.
- 26) The category of the implement coupling pins should correspond to that of lift coupling.
- 27) Take care when working near the lift links. This is a very dangerous zone.
- 28) It is absolutely forbidden to stand between the tractor and the implement when handling the lift control from outside.
- 29) Fix the side lift links with the relative chains and idlers during the transport phase.
- 30) Set the control lever of the hydraulic lift to the locked position during road transport with the implement raised.
- 31) Only use the cardan shaft recommended by the manufacturer.
- 32) Check the cardan shaft guard frequently and periodically. It must always be in a proper condition.
- 33) Take great care of the cardan shaft guard, both in the transport and working positions.
- 34) The cardan shaft must only be installed or dismantled whilst the engine is off.
- 35) Take great care to ensure that the cardan shaft is correctly assembled and safe, and carefully check the P.T.O. of the rotary tiller and of the tractor.
- 36) Lock the rotation of the protection devices and read the respective cardan shaft Instruction manual thoroughly.
- 37) Before engaging the PTO, ensure that there's nobody in the field of action of the machine and that the selected running rate corresponds to the permissible value.
- 38) Never engage the PTO when the engine is on.
- 39) Always disengage the PTO when the cardan shaft is set at an excessively open angle (never beyond 10 degrees) and when it is not in use.
- 40) Only clean and grease the cardan shaft when the PTO is disengaged, the engine is off, the handbrake engaged and the ignition key is removed.
- 41) Rest the cardan shaft on its stand when not in use.
- 42) Refit the protective cap on the PTO shaft after having dismantled the cardan shaft.
- 43) Over use of the machine can overheat the gear box unit and parts of the hydraulic circuit. Never touch these parts immediately after use as they are very hot and can cause burns.
- 44) Never carry out maintenance or cleaning work unless the PTO has been disengaged, the engine switched off, the hand brake engaged and the tractor locked in position by a block or stone under the wheels.
- 45) Periodically check for all nuts and bolts to be fully tightened. Re-tighten them if necessary.
- 46) Always place adequate supports under the implement when servicing the machine or replacing the hoe blades with the implement raised.
- 47) Before working on the rotary tiller rotor, disengage the PTO, switch off the tractor engine, engage the hand brake and check that the blades are still.
- 48) Only use the recommended oils & grease.
- 49) The spare parts must correspond to the requirements established by the manufacturer. Only use genuine spare parts.
- 50) The safety instructions must always be perfectly visible. They must be kept clean and should be replaced if they become illegible. Replacements are available on request from your local dealer.
- 51) The instruction manual must be kept for as long as the machines last.

### 3. INSTRUCTIONS FOR OPERATOR

#### MACHINES SUPPLIED PARTLY

##### 3.1 BROKEN-DOWN

When large volumes are involved, machines can be supplied with parts detached or removed (but always in the same packaging units).

Normally the 3-point frame is shipped separate and will later be fixed to the machine at the customer premises. Execute these installation operations with the utmost care.

Refer to the list of parts in the spare parts catalogue. In particular, apply the screw tightening torques as listed in the chart.

##### 3.2 BEFORE USE

Before starting the machine, check that:

1. The machine is perfectly in order that the lubricants are at the correct levels.
2. Check the rotary tiller is correctly fitted & positioned to obtain the right working depth.
3. Check air breather valve is fitted on gear box and side gear cover.

#### WARNING

None of the following servicing, adjustment and the preparation operations should be carried out unless the PTO is disengaged, the machine is on the ground, the tractor engine is off and the tractor itself is safely parked & braked.

##### 3.3 HITCHING TO THE TRACTOR

The rotary tiller is coupled to the tractor when the tiller is on the ground. The ground area should be flat.

All the rotary tillers can be attached to any tractor with a class 1 or 2 universal 3-point hitch.

Depending on the precise dimensions of these two of hitches, find the best position for the rotary tiller by moving the front plates along the square tube and insert the pin in the holes corresponding to the correct diameter for the tractor's parallel arms.

#### DANGER

Mounting of any implement to a tractor is a very dangerous operation and must only be carried out with the utmost care in compliance with the instructions.

The correct tractor/steerage hoe position is established by setting the implement at such a distance from the tractor that the universal coupling remains 5-10 cm from its maximum closing position. Now proceed in the following way:

1. Near the lift bars, setting them in the most suitable place insert the pin into the relative hole and lock in place with the lynch pins.
2. Lock the lift links using the relative chains and couplings parallel to the tractor.
3. Engage the cardan shaft and check that it is perfectly locked on the PTO. Check that the guard is free to turn and fix it with a relative latch. Remove the cardan shaft support and reposition it by fixing it on the relative hook.
4. Connect the upper third point and correctly regulate by means of the adjuster checking that the upper surface of the steerage hoe is parallel to the ground. This is very important since it achieves parallelism between the axis of the steerage hoe and that of the tractor PTO. When the implement operates in these conditions, there will be less stress on the PTO itself while the cardan shaft and implement will be much less subjected to wear.
5. Besides supporting the leveling plate and acting as shock absorber for it during road transport, the spring ram prevents the steerage hoe from overturning when parking. The effect of the leveling plate on the soil can be increased or decreased depending upon the position, established by the split pin in the various holes in the ram tube.

6. When the machine is operating parking stand should be removed. Parking stand should only be installed when the rotary tiller has been lowered to the ground & the machine is parked.

##### 3.4 CARDAN SHAFT

###### Cardan Shaft adaptation

The cardan shaft, supplied with the machine, is of standard length. Therefore, it might be required to adapt the cardan shaft. In that case, before taking any step consult the Manufacturer for the eventual adaptation.

#### CAUTION

When the cardan shaft is fully extended, the two tubes must overlap by at least 10-15 cm. When fully inserted, the minimum play must be 4cm.

If the implement is used on another tractor, always check that the guards completely cover the rotating parts of the cardan shaft.

#### CAUTION

1. Never allow the steerage hoe to operate out of the soil. During work, avoid turning corners while the implement is working. Never work in reverse. Always raise the implement in order to reverse or change direction.
2. During transport, or whenever the implement must be raised, it is advisable to adjust the lift unit of the tractor so that the implement itself is not raised more than about 35 cm from the ground.
3. Do not drive on public highways if the machine is dirtied with soil, grass as it hampers the road traffic.
4. Lower the machine slowly to allow the blades to gradually penetrate the soil.
5. Do not allow it to drop violently on to the ground. To do this would strongly stress all the machine components and could damage them.

##### 3.5 WORKING DEPTH

Rotary tiller working depth is regulated on the basis of the position of the following devices:

1. Side skids

**Machine with skids:** To adjust working depth on this type of machine you must loosen the adjustment pin and raise or lower the skid to the desired extent. Then reposition the pin. Both skids should be subjected to this operation, which will vary according to the type of soil.

##### 3.6 CHAIN TENSIONER

A special mechanical chain tensioner regulates the tension of the drive chain. This device works against coiled spring tensioner.

##### 3.7 HOE BLADES

Check the degree of wear and condition of the hoe blades daily. If the blades accidentally bend (or break) during work, they must be immediately replaced.

Remember to mount the new hoe blade in exactly the same position as the old one. If several hoe blades must be replaced, it is advisable to remove and assemble one hoe blade at a time in order to prevent positioning errors.

The steerage hoes are normally equipped with 4 blades per flange. When the soil is dry to clog it is, however, possible to mount 6 hoe blades per flange. The heads of the bolts fixing the hoe blades in place must be on the side of the hoe blades themselves, while the nut with relative washer must be on the flange side. Apply the tightening torques as listed in the chart. If the hoe blades must be changed, remember to set the new blades in the same positions as the dismantled ones.

### 3.8 IN WORKING

Start working with the PTO at running rate, gradually lowering the steerage hoe into the soil. Never excessively press down on the accelerator pedal when the PTO is engaged. This could be very harmful for both the steerage hoe and the tractor itself. When choosing how much to break up the soil that is to be rotary hoed the following points must be considered:

1. The type of soil (mixed, sandy, clayed etc.)
2. How deep to hoe
3. The forward moving speed of the rotary tiller/tractor.

The soil is best broken up and rotary hoed with a slow forward moving speed of the tractor, with the leveling blade lowered and a blade carrying rotor rotation speed of about 180-210 rpm. The plank helps to produce a well-leveled and smooth surface after hoeing.

If the plank is raised the sods/clog are no longer broken up and there will not be a smooth, level finish.

### 3.9 HOW IT WORKS

Position the Plank according to how finely broken soil should be. Position the depth of the two skids that are on the sides of the rotary tiller. Start to move the tractor forward gradually lowering the rotary tiller.

After a short distance check whether the soil is being hoed to the depth required, broken up finely enough and levelled enough.

### CAUTIONS

In order to prevent breakages or damage, the speed of the tractor must never exceed 2-5 km/hr while the implement is working.

## 3.10 TROUBLESHOOTING HINTS FOR THE TRACTOR OPERATOR

### INSUFFICIENT DEPTH

1. Check the positioning of the two depth skids.
2. Move forward slower as the power of the tractor may be insufficient.
3. If the soil is too hard a second or third hoeing may be required.
4. If the hoe blades are rotating on top of the soil instead of cutting into it proceed more slowly.

### THE SOIL IS TOO FINELY BROKEN UP

1. Raise the leveling blade.
2. Increase the forward moving speed of the tractor.

### THE SOIL IS NOT BROKEN UP FINELY ENOUGH

1. Lower the leveling blade.
2. Reduce the tractor speed.
3. Don't work soil that is too wet.
4. In the rotary hoes fitted with a leveling bar, raise or lower this so as to keep the sods closer to the hoe blades.

### CLOGGING UP THE ROTOR

1. The soil is too wet for hoeing.
2. Raise the leveling blade.
3. Reduce the tractor speed.
4. Reduce the number of the hoe blades per flange from six to four.
5. Avoid hoeing where there is long grass.

### THE ROTARY HOE BOUNCES OVER THE SOIL OR VIBRATES

1. There are foreign bodies caught between the hoe blades.
2. The hoe blades have been incorrectly assembled thereby not forming. The helix shape or with the blunt edge placed to cut into the soil first instead of the cutting edge.
3. Worn or broken hoe blades.
4. The rotor is deformed because of blows to the central part caused by foreign bodies present during hoeing.

### OTHER PROBLEMS

The rotary hoe does not hoe to the same depth over the whole width. E.g. if it hoes too deeply on the right side shorten the right arm of the lift bars and regulate the position of the right hand skid.

### WORKING ON A HILL/SLOPE

Where possible always try to 'work up' the slope. If this is not possible avoid hoeing along the contours of the hill and hoe up and down the slope to avoid a terracing effect.

### PRACTICAL NOTES

The hoed soil should be on the right of the driver the best system is to hoe the alternate strips.

### 3.11 PARKING

### WARNING

Comply with the following instruction in order to ensure that the implement remains stable when released from the tractor.

1. Besides supporting the leveling plate and acting as a shock absorber for it during road transport, the spring ram prevents the steerage hoe from over turning when parking.
2. Hold the cardan shaft with a suitable support.

### 4. MAINTENANCE

The various servicing operation are listed in the following paragraphs.

Lower running costs and longer machine life depend on constant and methodical compliance with these operations.



## CAUTION

The given frequencies are indicative and refer to normal conditions of use. They may therefore be subjected to variations in relation to the type of service, in more or less dusty environment, seasonal factors, etc.

In the case of heavy-duty condition, the maintenance operation should obviously be more frequent.

Before injecting grease into the lubricators, the greasing points must be thoroughly cleaned to prevent mud, dust or foreign bodies from mixing with the lubricants, thus reducing or even annulling its lubricating effect.

When topping up or changing the lubricant, always ensure that the oil is of the same type as that used previously.

## WARNING

Always keep oil and greases well away from children's reach. Always thoroughly read the warnings and precautions indicated on the containers.

Avoid contact with the skin.

Always thoroughly and fully wash after use. The utilized oils should be treated in compliance with the current anti-pollution laws.

### 4.1 EVERY 8 WORK HOURS

Grease the cardan shaft cross journals.

Check that the bolts fixing the hoe blades are well tightened.

### 4.2 EVERY 50 WORK HOURS

Check the level of the oil in the gearbox or in the reduction unit and top up to the level mark on the rod as necessary.

**Transmission lateral part chain:** check the level of the oil in the side casing of the transmission unit.

Add oil through the fill plug if necessary. It should flow from the level plug.

### 4.3 EVERY 200 WORK HOURS

Change the oil in the gearbox or in the reduction unit and transmission casing by completely draining of the old oil through the drain plug, under the reduction unit and through the transmission drain plug.

### 4.4 STORAGE

It is advisable to proceed in the following way at the end of the season or if the machine is to remain inactive for a long period of time:

1. Wash the implement, particularly removing any fertilizer and/or chemical products, and then thoroughly dry it.
2. Carefully check for any damaged or worn parts and replace these if necessary.

3. Fully check screws or bolts, particularly those fixing the hoe blades.
4. Thoroughly lubricate the implement and lastly protect it with a plastic sheet. Store it in a dry place.

Careful compliance with these instructions will be all to the advantage of the user who will be sure to use an implement in perfect conditions when work begins again. Remember that the manufacturer is always at your disposal for any assistance or spare parts as may be required.

## 4.5 LUBRICANTS

It is advisable to use SAE 140 EP Grade OIL or equivalent for the gear box unit and side transmission.

It is advisable to use high quality grease for all greasing points.

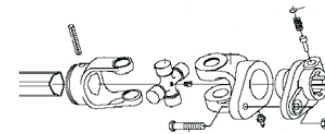
## 5. SERVICING TIPS

1. **Problem**--P.T.O shaft is rotating with constant speed but not the gear box.

**Cause of problem** -- Safety bolt might be broken

**Solution** – Replace the safety bolt.

- a) Remove the P.T.O shaft from the R.T side.
- b) Dislodge the safety bolt and replace it.



2. **Problem**—P.T.O shaft is making noise/ vibration.

**Cause of problem** – P.T.O cross is broken.

**Solution** – Change the P.T.O cross.

- a) Take the P.T.O shaft and check the cross of both side by rotating it.
- b) Remove the lock of the cross which is broken.
- c) Take out the cross by using hammer gently.
- d) Insert the new one properly then lock it.
- e) Rotate the yoke, it should rotate properly.
- f) Make the greasing properly.

3. **Problem**—Yoke is not fitting on the pinion shaft.

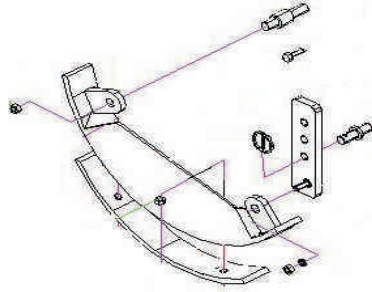
**Cause of problem** – Yoke pin is broken.

**Solution** – Replace the yoke pin.

- a) Clear the head of the pin push it with with hammer and remove it
- B) Replace it with new one.
- c) Take care of proper cleaning and greasing.

4. **Problem**—Rotary tiller is not taking proper depth.

**Cause of problem**— Side depth skids need to be adjusted.



**Solution –**

- a) Lose the side skid bolt .
- b) Shift the hole to the upper side.

**2. Problem—**R. T. is taking on one side more depth.

**Cause of problem –**linkage is not proper

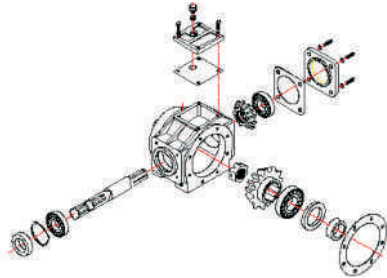
**Solution –**Linkage adjustment should be proper.

- a. Tractor linkage should be tight.
- b. There should not be any play more then 1.5”(38MM).
- c. At the time of attaching the rotary tiller the R. T should be in proper leveled position.
- d. Both side skids should be in same bolt position.

**3. Problem—**Gear box is noisy.

**Cause of problem –**Play in bearing or teeth broken.

**Solution –**Replace the bearing or bevel gear.



- a) Open the top cover to see the wear of the teeth
- b) If the teeth of the gear is broken the bevel set needs to be replaced.
- c) Pull out the gear box and open the big flange.
- d) Then remove the back plate
- e) Pull out the pinion shaft using hammer or press machine.
- f) Replace the bearing, gear and seals.
- g) Make the fitment in the same way using new gasket.
- h) The gear should rotate freely.
- i) Assemble it back the breather valve should be clean and oiling should be checked.

**2. Problem—**Gear shafts are rotating but not the chain/rotor

**Cause of problem –**Transmission shaft / chain/ RD shaft is broken

**Solution –**Open the chain cover and replace the part which is broken.

- a. First remove the lock & loose the check nut.
- b. Pull out the sprocket assembly with chain.
- c. If the transmission shaft is broken, follow the same process as above and replace the shaft then assemble the gear box with rotary tiller.
- d. If chain is broken then replace the chain and assemble the sprockets together with chain & then tighten the check nuts.

For RD shaft the process will be different

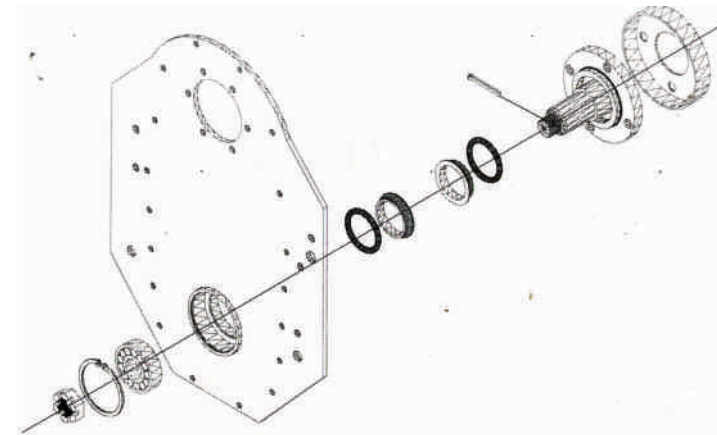
- e. First open the flange bolt of the rotor on both side (RD shaft and Dead shaft) and remove the rotor.
- f. Loosen the check nut of RD shaft and hammer it till it gets out from the RD shaft hub & then replace the RD shaft and tight the check nut. Take care of the seal as it should not be harmed with this replacement.

The same process be followed for dead shaft replacement.

**3. Problem—**Oil leakage from the RD shaft hub or dead hub.

**Cause of problem –**Seal is wearing out needs to be replaced it.

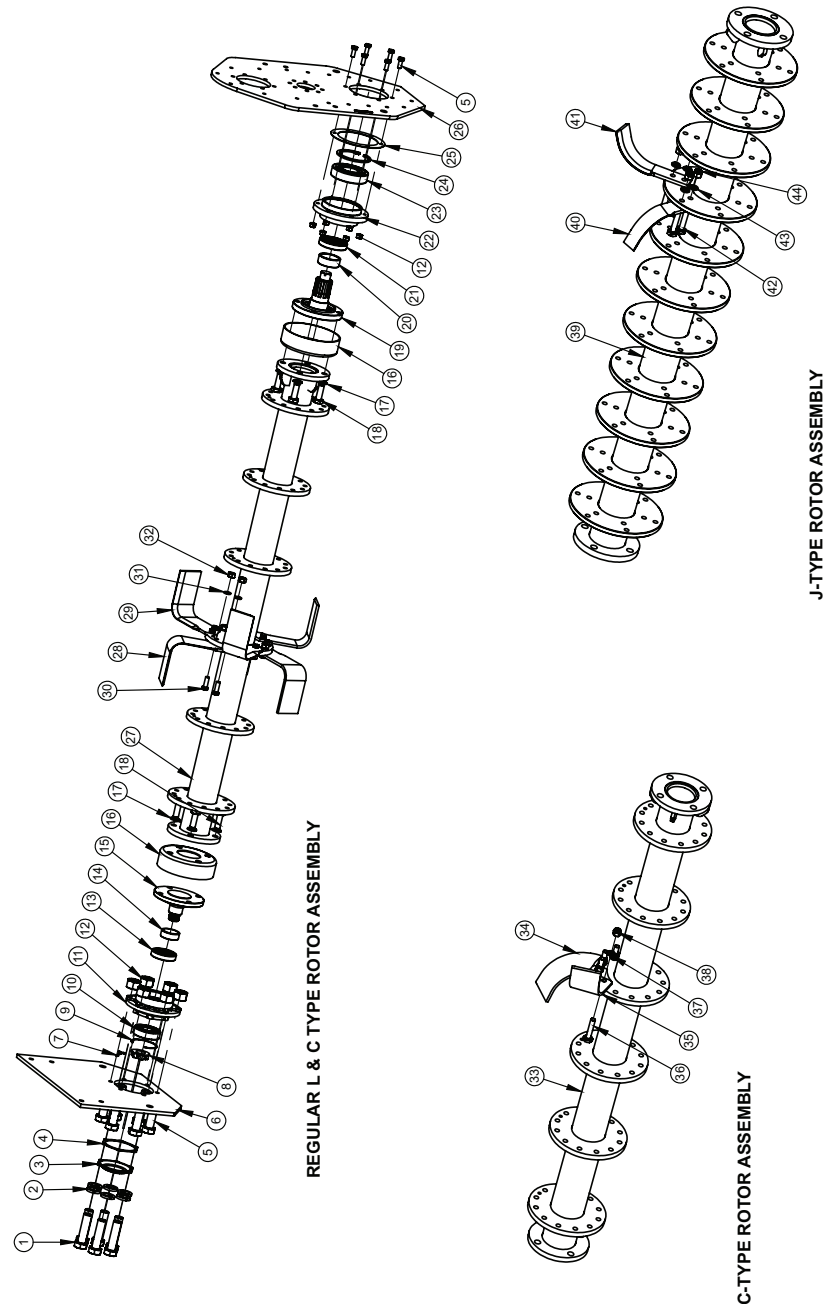
**Solution –**Open the hub assembly as before



- a. Take out the hub from the plate by loosening the bolts
- b. Remove the lock and pull out the shaft.
- c. Pull out the seal from both shaft and hub then replace it with new one
- d. Inspect the position of bearing and hub if it is ok. Clean it and assemble as before.
- e. Proper greasing is very necessary in assembly processes.

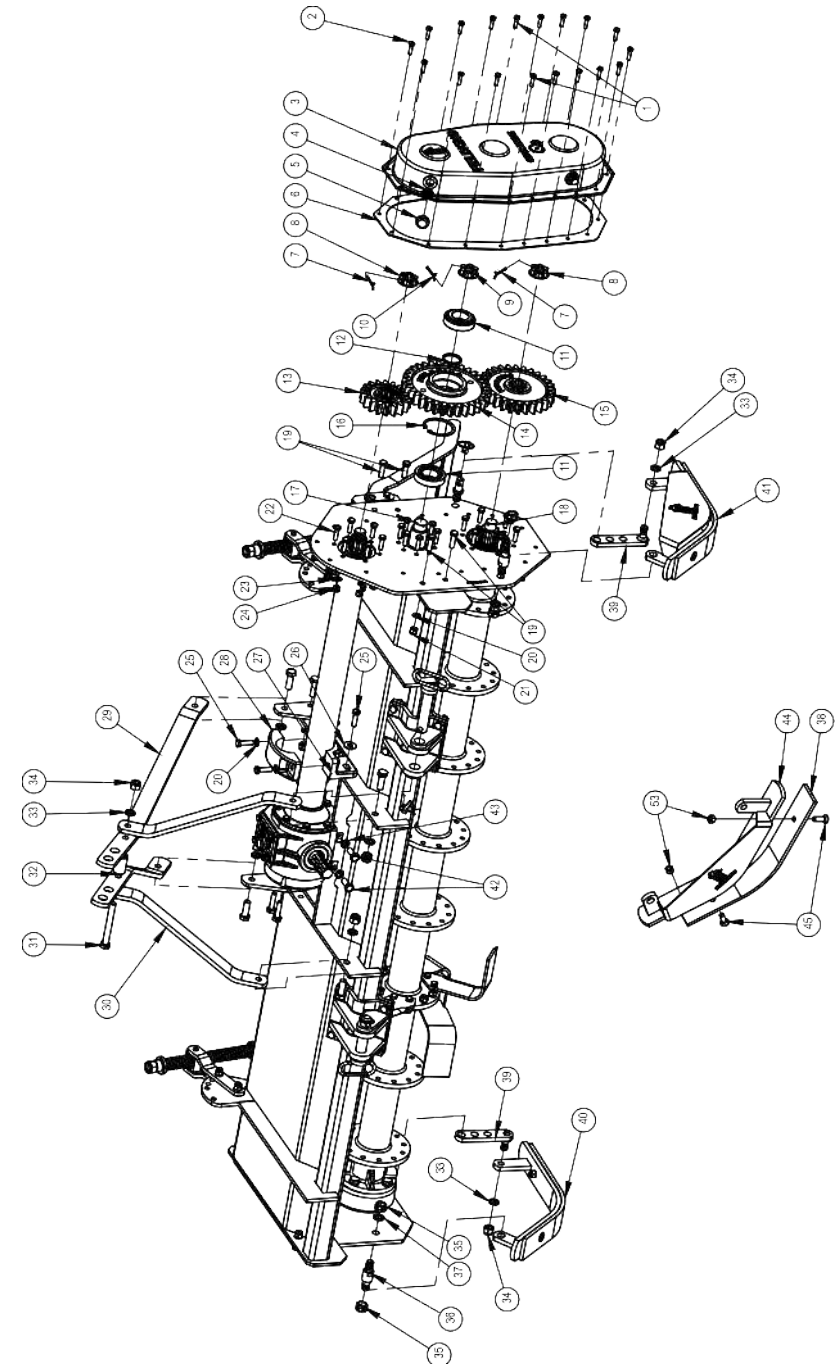
SIDE PLATE & ROTOR ASSEMBLY				
SR. NO.	DESCRIPTION	PART CODE	ITEM CODE	QTY
1	HEX HEAD BOLT M6X1P	---	10260359	6
2	SPRING WASHER 6MM	---	10270033	6
3	DEAD HUB CAP NEW	FKRT-155	10180001	1
4	GASKET DEAD HUB	FKRT-414	10040026	1
5	HEX HEAD BOLT M10X1.5PX35	---	10260053	12
6	SIDE PLATE LHS SMALL (18X33X28)	FKRT-464	73540004	1
	SIDE PLATE LHS SMALL (19X33X25)	FKRT-396	70050001	
	SIDE PLATE LHS BIG (18X33X28)	FKRT-594	78910002	
	SIDE PLATE LHS BIG (19X33X25)	FKRT-596	78910003	
7	SPLIT PIN 1/8X2.5 INCH	---	10020097	1
8	CASTEL NUT M30X1.5	---	10280093	1
9	CIRCLIP 95	---	10390014	1
10	BEARING 6308	---	10050051	1
11	DEAD HUB (OIL SEAL TYPE) NEW ROUND	FKRT-363	10090021	1
12	PLAN NUT M10X1.5	---	10280036	12
13	OIL SEAL 55X75X15	---	10010023	1
14	DEAD AXLE BUSH	FKRT-299	10070042	1
15	DEAD AXLE SHAFT NEW	FKRT-151	10110002	1
16	ROTOR COVER	FKRT-157	10150003	2
17	SPRING WASHER 16 MM	---	10270005	8
18	HEX HEAD BOLT M16X1.5X35	---	10260353	8
19	RD SHAFT-10S	FKRT-263	10290017	1
20	RD SHAFT BUSH	FKRT-297	10070002	1
21	OIL SEAL 65X85X18	10010003	10010003	1
22	RD HUB (OIL SEAL TYPE) NEW ROUND	FKRT-273	FKRT-273	1
23	BEARING 6310	---	10050053	1
24	CIRCLIP B118	---	10390013	1
25	RD HUB GASKET	FKRT-395	10040025	1
26	SIDE PLATE RHS GEAR DRIVE (18X33X28)	FKRT-257	73590002	1
	SIDE PLATE RHS GEAR DRIVE (19X33X25)	FKRT-256	70040004	
27	<b>ROTOR ASSEMBLY (REGULAR L &amp; C TYPE BLADE)</b>			1
	ROTOR ASSEMBLY COMPLETE 1.00 MTR	FKRT-5041	70030012	
	ROTOR ASSEMBLY COMPLETE 1.25 MTR	FKRT-5042	73190001	
	ROTOR ASSEMBLY COMPLETE 1.50 MTR	FKRT-5043	73200001	
	ROTOR ASSEMBLY COMPLETE 1.75 MTR	FKRT-5044	73210001	
	ROTOR ASSEMBLY COMPLETE 2.00 MTR	FKRT-5045	73220001	
	ROTOR ASSEMBLY COMPLETE 2.25 MTR	FKRT-5046	73230001	
ROTOR ASSEMBLY COMPLETE 2.50 MTR	FKRT-5047	73240001		
ROTOR ASSEMBLY COMPLETE 2.75 MTR	FKRT-5048	73250001		
28	L -TYPE HOE LHS	FKRT-431	10060016	3XNO. OF FLANGE
	C -TYPE HOE LHS	FKRT-615	10060035	3XNO. OF FLANGE
29	L -TYPE HOERHS	FKRT-432	10060017	3XNO. OF FLANGE
	C -TYPE HOE RHS	FKRT-616	10060034	3XNO. OF FLANGE
30	BOLT M14X1.5X40	---	10260357	12XNO. OF FLANGE
31	SPRING WASHER 14 MM	---	10270004	12XNO. OF FLANGE
32	NYLOCK NUT M14X1.5	---	10280004	12XNO. OF FLANGE
33	<b>ROTOR ASSEMBLY (TERMIVATOR L &amp; C TYPE BLADE)</b>			1
	ROTOR ASSEMBLY COMPLETE 1.45 MTR	FKRT-5061	73340001	
	ROTOR ASSEMBLY COMPLETE 1.65 MTR	FKRT-5062	73350001	
	ROTOR ASSEMBLY COMPLETE 1.85 MTR	FKRT-5063	73360001	
ROTOR ASSEMBLY COMPLETE 2.05 MTR	FKRT-5064	73370001		
34	L -TYPE HOE LHS	FKRT-425	10060014	3XNO. OF FLANGE
	C -TYPE HOE LHS	FKRTB-10	10060038	3XNO. OF FLANGE
35	L -TYPE HOE RHS	FKRT-426	10060015	3XNO. OF FLANGE
	C -TYPE HOE RHS	FKRTB-11	10060039	3XNO. OF FLANGE
36	BOLT M14X1.5X40	---	10260357	12XNO. OF FLANGE
37	SPRING WASHER 14 MM	---	10270004	12XNO. OF FLANGE
38	NYLOCK NUT M14X1.5	---	10280004	12XNO. OF FLANGE
39	<b>ROTOR ASSEMBLY (J TYPE BLADE)</b>			1
	ROTOR ASSEMBLY COMPLETE 1.00 MTR	FKRT-5095	73200006	
	ROTOR ASSEMBLY COMPLETE 1.25 MTR	FKRT-5096	73200007	
	ROTOR ASSEMBLY COMPLETE 1.50 MTR	FKRT-5097	73200004	
	ROTOR ASSEMBLY COMPLETE 1.75 MTR	FKRT-5098	73200005	
	ROTOR ASSEMBLY COMPLETE 2.00 MTR	FKRT-5099	73200006	
ROTOR ASSEMBLY COMPLETE 2.25 MTR	FKRT-5069	73230004		
40	J -TYPE HOE LHS	FKRT-498	10060023	3XNO. OF FLANGE
41	J -TYPE HOE RHS	FKRT-497	10060022	3XNO. OF FLANGE
42	HEX HEAD BOLT M12X1.75X40	---	10260355	12XNO. OF FLANGE
43	SPRING WASHER 12 MM	---	10270003	12XNO. OF FLANGE
44	NYLOCK NUT M12X1.75	---	10280025	12XNO. OF FLANGE

SIDE PLATE & ROTOR ASSEMBLY



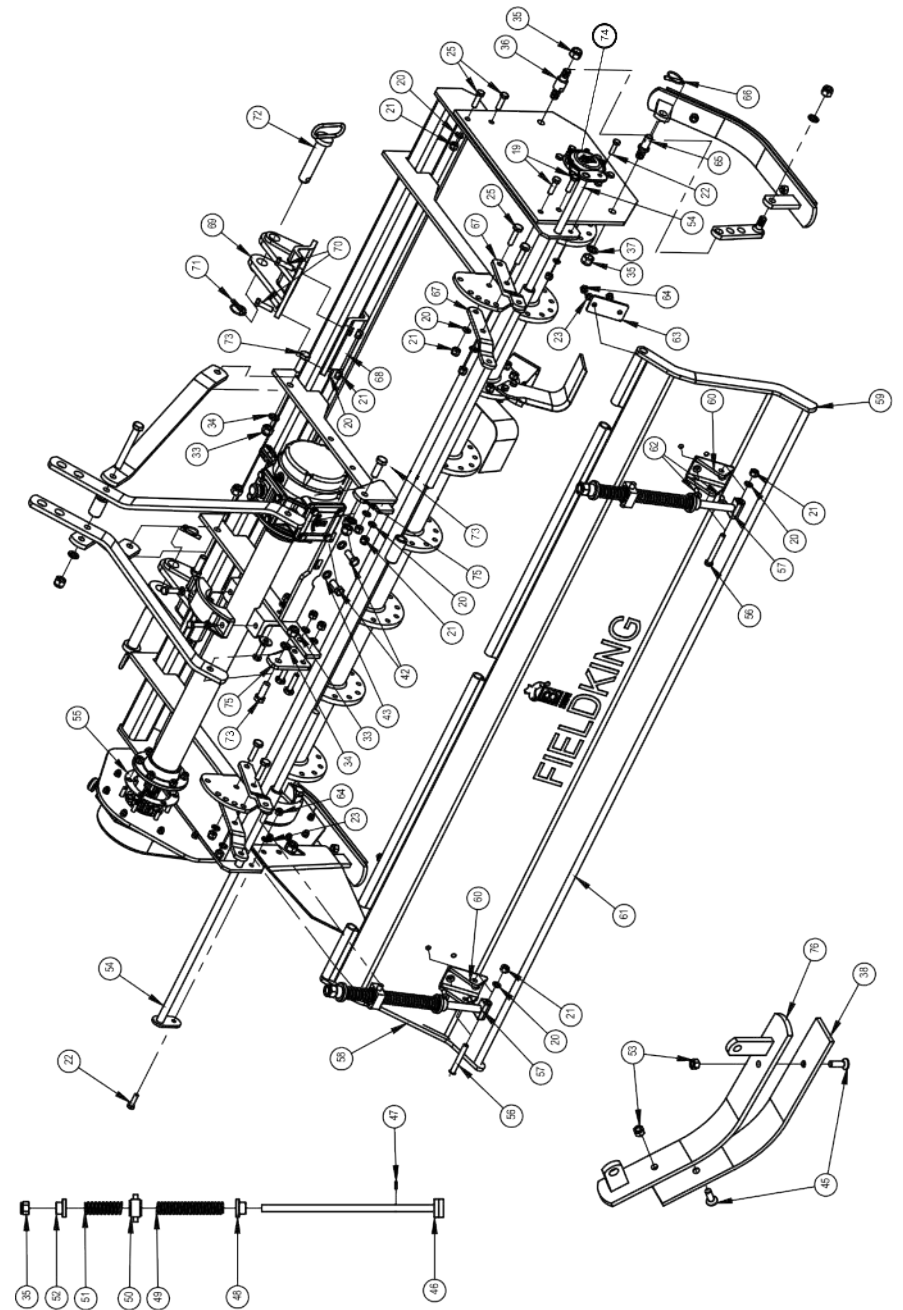
ROTARY TILLER COMPLETE ASSEMBLY				
SR. NO	ITEM CODE	DESCRIPTION	PART CODE	QTY.
1	10260373	HEX HEAD BOLT M8X40	-	2
2	10260360	HEX HEAD BOLT M8X25	-	16
3	10150006	GEAR COVER	FKRT-293	1
4	10280010	BREATHER NUT 22X1.5	FKRT-183	2
5	10190001	BREATHER VALVE	FKRT-184	2
6	10040016	GASKET CHAIN/ GEAR COVER	FKRT-294	1
7	10020097	SPLIT PIN 1/8 2.5"	-	1
8	10280093	CASTLE NUT 30X1.5	-	3
9	10280071	CASTLE NUT 36X2	-	1
10	10020097	SPLIT PIN 1/8 2.5 INCH	-	4
11	10050013	BEARING 32209	-	1
12	10300096	SPACER 45X4	FKRT-279	1
13	10250001	SPUR GEAR 18-14S	FKRT-283	1
	10250023	SPUR GEAR 18- 8S	FKRT-281	1
	10250004	SPUR GEAR 19-14S	FKRT-284	1
	10250029	SPUR GEAR 19-8S	FKRT-282	1
14	10250015	SPUR GEAR Z33	FKRT-285	1
15	10250019	SPUR GEAR 28-10S	FKRT-286	1
	10250030	SPUR GEAR 25-10S	FKRT-287	1
16	10390032	CIRCLIP B85	-	1
17	10020004	IDLER PIN	FKRT-277	1
18	10290017	RD SHAFT NEW	FKRT-263	1
19	10260362	HEX HEAD BOLT M12X1.75X35	-	6
20	10270003	SPRING WASHER M12	-	6
21	10280025	NYLOCK NUT M12X1.75	-	6
22	10260353	HEX HEAD BOLT M10X1.5X35	-	20
23	10270002	SPRING WASHER M10	-	6
24	10280036	PLAN NUT M10	-	12
25	10260399	HEX HEAD BOLT M14 X60 X 2	-	4
26	10270010	PLAN WASHER M12	-	4
27	10220022	TRANSMISSION PIPE CLAMP LOWER	FKRT-339	2
28	10220021	TRANSMISSION PIPE CLAMP UPPER	FKRT-338	2
29	73570003	REAR LEVER	FKRT-331	2
30	73570002	FRONT LEVER	FKRT-330	2
31	10260367	HEX HEAD BOLT M16X2X125	-	1
32	10070004	BUSH	FKMODH-012	1
33	10270005	SPRING WASHER M16	-	1
34	10280005	NYLOCK NUT M16X2	-	1
35	10280006	NYLOCK NUT M18X1.5P	-	6
36	10020001	DEPTH SKID PIN-1	FKRT-165	1
37	10270006	SPRING WASHER M18	-	4
38	71570007	DEPTH SKID SUPPORT BEND STRIP LOWER	FKRT-159	1
39	71570008	DEPTH SKID ADJUSTER	FKRT-160	1
40	73420001	DEPTH SKID ASSEMBLY LHS	FKRT-5206	1
41	71570001	DEPTH SKID ASSEMBLY RHS	FKRT-5103	1
42	10260067	HEX HEAD BOLT M14X1.5X35	-	4
43	10270004	SPRING WASHER M14	-	4
44	71570011	DEPTH SKID UPPER STRIP ASSEMBLY RHS	FKRT-5238	1
45	10260049	CSK BOLT M12X1.75X35	-	2

ROTARY TILLER ASSEMBLY



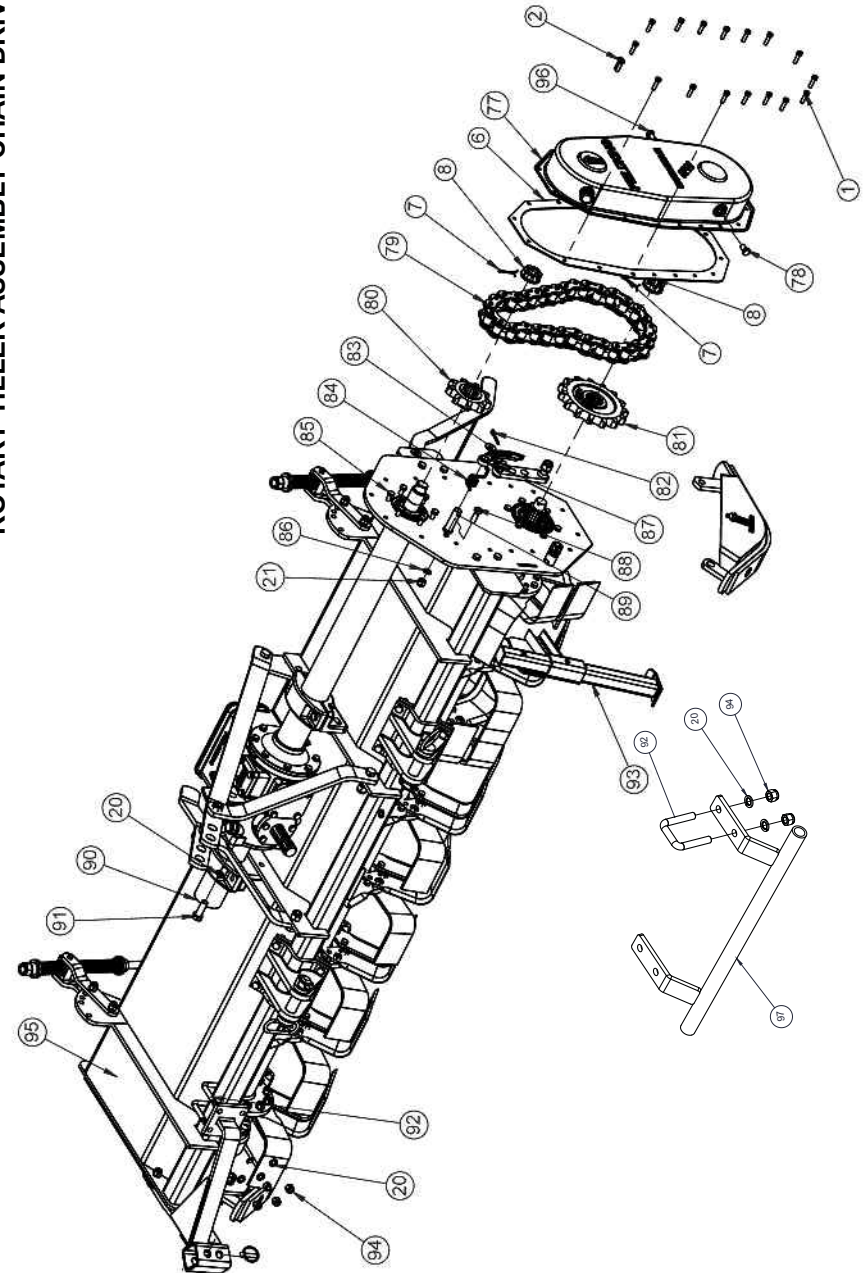
ROTARY TILLER COMPLETE ASSEMBLY				
SR. NO	ITEM CODE	DESCRIPTION	PART CODE	QTY.
46	10160006	SHOCKER ROD	FKRT-125	2
47	20050422	RIVIT 5X35	-	2
48	10180018	SHOCKER SPRING CUP LOWER	FKRT-127	2
49	10210002	SHOCKER SPRING BIG	FKRT-129	2
50	10070003	SQUARE BUSH	FKRT-126	2
51	10210003	SHOCKER SPRING SMALL	FKRT-130	2
52	10180002	SHOCKER SPRING CUP UPPER	FKRT-128	2
53	10280028	PLAIN NUT M12X1.75	-	2
54	70020040	PLANK ROD NEW 2.75 MTR	FKRT-5286	
	70020039	PLANK ROD NEW 2.50 MTR	FKRT-5285	
	70020028	PLANK ROD NEW 2.25 MTR	FKRT-5216	
	70020029	PLANK ROD NEW 2 MTR	FKRT-5215	
	70020030	PLANK ROD NEW 1.75 MTR	FKRT-5214	
	70020031	PLANK ROD NEW 1.5 MTR	FKRT-5213	
	70020032	PLANK ROD NEW 1.25 MTR	FKRT-5212	
	70020033	PLANK ROD NEW 1 MTR	FKRT-5211	
	70020037	PLANK ROD NEW 2.05MTR	FKRT-5220	
	70020036	PLANK ROD NEW 1.85 MTR	FKRT-5219	
70020035	PLANK ROD NEW 1.65 MTR	FKRT-5218		
70020034	PLANK ROD NEW 1.45 MTR	FKRT-5217		
55	10040005	GASKET SMALL FLAGE 6 HOLE	FKRT-400	1
56	10260364	HEX HEAD BOLT 12X1.75X90	-	2
57	73180001	SHOCKER ASSEMBLY	FKRT-5101	2
58	70020011	PLANK SIDE SUPPORT RHS	FKRT-121	1
59	70020027	PLANK SIDE SUPPORT LHS	FKRT-452	1
60	10220003	SHOCKER -PLANK ATTACHMENT U CLAMP	FKRT-123	2
61	73130001	PLANK ASSEMBLY 2.75MTR	FKRT-5028	1
	73120001	PLANK ASSEMBLY 2.50MTR	FKRT-5027	1
	73110001	PLANK ASSEMBLY 2.25MTR	FKRT-5026	1
	73100001	PLANK ASSEMBLY 2MTR	FKRT-5025	1
	73090001	PLANK ASSEMBLY 1.75MTR	FKRT-5024	1
	73080001	PLANK ASSEMBLY 1.5MTR	FKRT-5023	1
	70020013	PLANK ASSEMBLY 1.25MTR	FKRT-5022	1
	70020024	PLANK ASSEMBLY 1MTR	FKRT-5021	1
	73170001	PLANK ASSEMBLY 2.05MTR	FKRT-5034	1
	73160001	PLANK ASSEMBLY 1.85MTR	FKRT-5033	1
73150001	PLANK ASSEMBLY 1.65MTR	FKRT-5032	1	
73140001	PLANK ASSEMBLY 1.45MTR	FKRT-5031	1	
62	10260113	CSK BOLT M10X1.5X35	-	2
63	70020026	SHOCKER PLANK ATTACHMENT INNER SUPPORT PLATE	FKRT-124	2
64	10280002	NYLOCK NUT M10X1.5	-	4
65	10020002	DEPTH SKID PIN-2	FKRT-166	1
66	10020045	LINCH PIN 8MM	-	1
67	70020012	FRAM SHOCKER HOLDING CLAMP	FKRT-122	4
68	10120005	FRONT LINK BRACKET LOWER	FKRT-499	2
69	10120006	FRONT LINK BRACKET UPPER	FKRT-500	4
70	10260356	HEX HEAD BOLT 12X1.75X60	-	8
71	10020022	LINCH PIN 10MM	-	3
72	10020047	TILLER PIN WITH HANDLE 28X145	-	2
73	10260358	HEX HEAD BOLT M16X2X50	-	2
74	10300312	GREASE NIPPLE M6X1P	-	1
75	70110004	REAR LEVER EXTENSION PLATE	FKRT-458	
76	73420002	DEPTH UPPER STRIP ASSEMBLY LHS	FKRT-5237	1

ROTARY TILLER ASSEMBLY

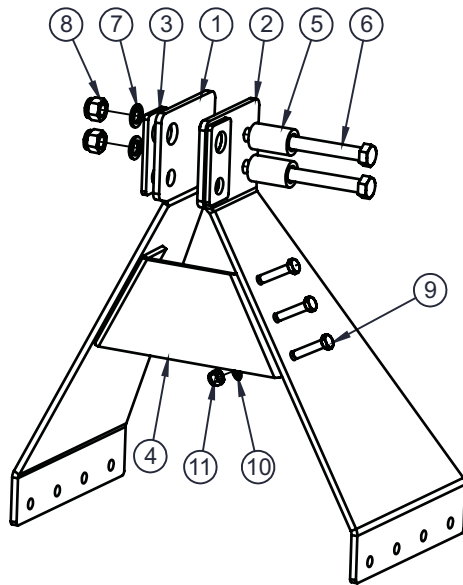


ROTARY TILLER COMPLETE CHAIN ASSEMBLY				
SR. NO	ITEM CODE	DESCRIPTION	PART CODE	QTY.
77	10150011	CHAIN COVER	FKRT-326	1
78	10280011	DRAIN PLUG BOLT M12X1.5X20	FKRT-295	1
79	10140001	CHAIN 1.25P	FKRT-322	1
	10140005	CHAIN 1.5P	-	1
80	10170004	SPROCKET 10T-14S	FKRT-311	1
	10170010	SPROCKET 10T-8S	FKRT-310	1
	10170003	SPROCKET 11T-14S	FKRT-351	1
	10170018	SPROCKET 11T-8S	FKRT-478	1
	10170005	SPROCKET 9T-14S	FKRT-316	1
81	10170011	SPROCKET 17T-10S	FKRT-312	1
	10170017	SPROCKET 16T-10S	FKRT-496	1
	10170016	SPROCKET 15T-10S	FKRT-427	1
82	10020005	SPLIT PIN 3/16	-	1
83	10270020	WASHER M16	-	1
84	10210001	CHAIN TIGHTENER SPRING	FKRT-304	1
85	10260027	CSK BOLT M10X1.5X35	-	6
86	10270002	SPRING WASHER 10MM	-	6
87	10140006	CHAIN TIGHTENER	FKRT-301	1
88	10260148	CHAIN TIGHTENER SPRING BOLT	FKRT-306	1
89	10020067	CHAIN TIGHTENER SPRING PIN	FKRT-308	1
90	74790002	MULTISPEED GEAR BOX SIDE MOUNTING	FKRT-5222	1
91	10260372	HEX HEAD BOLT M14X35X2P (8.8 GRADE)	-	4
92	10220028	U CLAMP BOLT 100X62X12	-	2
93	73460004	ROTARY TILLER STAND ASSEMBLY	FKRT-5239	1
94	10280025	NYLOCK NUT M12X1.5	-	1
95		<b>RT FRAME ASSEMBLY</b>		1
	70010031	RT FRAME ASSEMBLY 1.00 MTR.	FKRT-5015	1
	70010032	RT FRAME ASSEMBLY 1.25 MTR.	FKRT-5016	1
	70010033	RT FRAME ASSEMBLY 1.50 MTR.	FKRT-5017	1
	70010034	RT FRAME ASSEMBLY 1.75 MTR.	FKRT-5018	1
	70010035	RT FRAME ASSEMBLY 2.00 MTR.	FKRT-5019	1
	72990001	RT FRAME ASSEMBLY 2.25 MTR.	FKRT-5006	1
	73010001	RT FRAME ASSEMBLY 2.50 MTR.	FKRT-5007	1
	73020001	RT FRAME ASSEMBLY 2.75 MTR.	FKRT-5008	1
	70010036	RT FRAME ASSEMBLY 1.45 MTR.	FKRT-5134	1
	70010037	RT FRAME ASSEMBLY 1.65 MTR.	FKRT-5135	1
	70010038	RT FRAME ASSEMBLY 1.85 MTR.	FKRT-5136	1
	70010039	RT FRAME ASSEMBLY 2.05 MTR.	FKRT-5137	1
96	10300117	OIL LEVEL INDICATOR		1
97	70010098	SAFETY GUARD PIPE ASSEMBLY 1.00 MTR.	FKRT-6020	2
	70010099	SAFETY GUARD PIPE ASSEMBLY 1.25 MTR.	FKRT-6021	
	70010100	SAFETY GUARD PIPE ASSEMBLY 1.50 MTR.	FKRT-6022	
	70010101	SAFETY GUARD PIPE ASSEMBLY 1.75 MTR.	FKRT-6023	
	70010102	SAFETY GUARD PIPE ASSEMBLY 2.00 MTR.	FKRT-6024	
	70010103	SAFETY GUARD PIPE ASSEMBLY 2.25 MTR.	FKRT-6025	
	70010104	SAFETY GUARD PIPE ASSEMBLY 2.50 MTR.	FKRT-6026	
	SAFETY GUARD PIPE ASSEMBLY 2.75 MTR.			

ROTARY TILLER ASSEMBLY CHAIN DRIVE

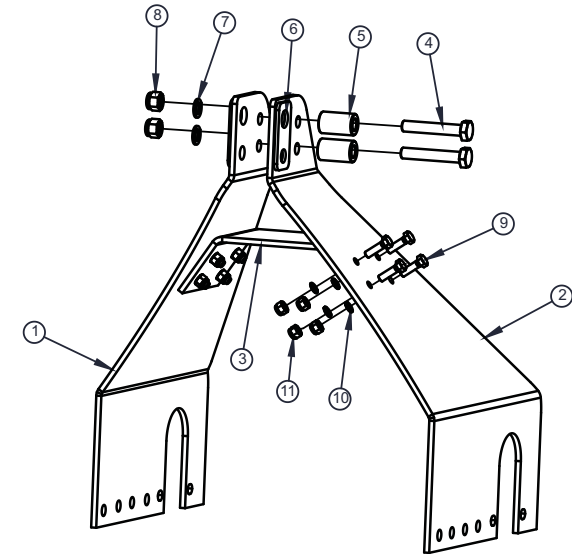


## REGULAR SHEET-METAL 3-POINT LINKAGE



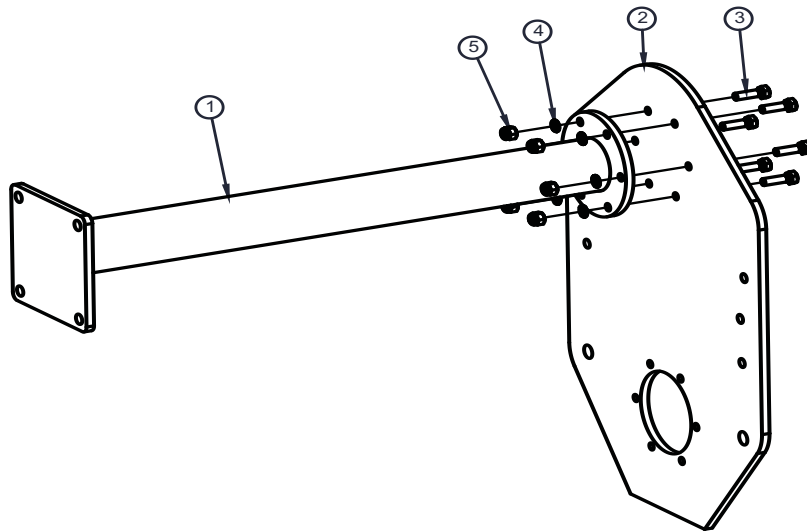
ROTARY TILLER 3 POINT LINKAGE ASSEMBLY (BRT-5141)				
SR NO.	ITEM CODE	PART NAME	PART CODE	QTY
1	73570007	FRONT LEVER PLATE (LHS)	BRT-330	1
2	73570006	FRONT LEVER PLATE (RHS)	BRT-331	1
3	73570008	TPL SIDE SUPPORT PLATE 100X50X6	BRT-332	2
4	73570009	TPL MIDDLE SUPPORT PLATE	BRT-333	1
5	10070004	BUSH 17X32X52MM (L)	FKMODH-012	2
6	10260134	HEX HEAD BOLT M16X105X2MM	-	2
7	10270005	SPRING WASHER 16MM	-	2
8	10280005	NYLOCK NUT M16X2MM	-	2
9	10260353	HEX HEAD BOLT M10X1.5X35	-	6
10	10270002	SPRING WASHER 10 MM	-	6
11	10280002	NYLOCK NUT M10X1.5	-	6

## ROBUST SHEET-METAL 3-POINT LINKAGE

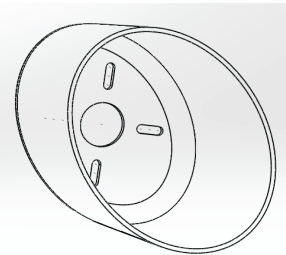


ROTARY TILLER SHEET-METAL 3-POINT LINKAGE			
SR.NO.	DESCRIPTION	ITEM CODE	QTY.
1	LEVER SIDE PLATE -LHS	73570021	1
2	LEVER SIDE PLATE -RHS	73570022	1
3	MIDDLE SUPPORT PLATE	73570023	1
4	HEX HEAD BOLT M16X95X2	10260418	2
5	BUSH 17X32X52L	10070004	2
6	LEVER SIDE SUPPORT PLATE	73570019	2
7	SPRING WASHER 16MM	10270005	2
8	NYLOCK NUT M16X2	10280005	2
9	HEX HEAD BOLT M10X35X1.5	10260353	8
10	SPRING WASHER 10 MM	10270002	8
11	NYLOCK NUT M10X1.5	10280002	8

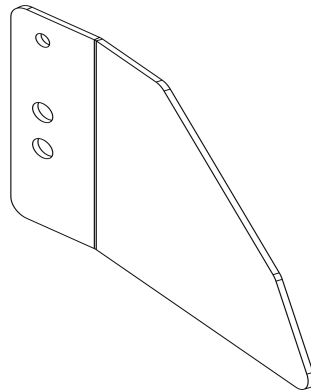
## BOTH SIDE PIPE



## PTO SAFETY COVER



## PLANK GAURD



BOTH SIDE PIPE				
SR.NO.	ERP CODE	ITEM_NAME	PART NO	QTY
1		GEAR BOX SIDE MOUNTING ASSEMBLY		
	78750039	RT GEAR BIG SIDE MOUNTING ASSEMBLY 1.25 MTR (MULTISPEED)	FKRT-5307	1
	78750010	RT GEAR BIG SIDE MOUNTING ASSEMBLY 1.25 MTR (SINGLE SPEED)	FKRT-5288	1
	78750019	RT GEAR BIG SIDE MOUNTING ASSEMBLY 1.50 MTR (MULTISPEED)	FKRT-5294	1
	78750031	RT GEAR BIG SIDE MOUNTING ASSEMBLY 1.50 MTR (MULTISPEED) C TYPE	FKRT-5308	1
	78750016	RT GEAR BIG SIDE MOUNTING ASSEMBLY 1.50 MTR (SINGLE SPEED)	FKRT-5289	1
	78750020	RT GEAR BIG SIDE MOUNTING ASSEMBLY 1.75 MTR (MULTISPEED)	FKRT-5295	1
	78750033	RT GEAR BIG SIDE MOUNTING ASSEMBLY 1.75 MTR (MULTISPEED) C TYPE	FKRT-5309	1
	78750023	RT GEAR BIG SIDE MOUNTING ASSEMBLY 1.75 MTR (ROBUST MULTISPEED)	FKRT-5298	1
	78750036	RT GEAR BIG SIDE MOUNTING ASSEMBLY 1.75 MTR (ROBUST SINGLE SPEED)	FKRT-5303	1
	78750017	RT GEAR BIG SIDE MOUNTING ASSEMBLY 1.75 MTR (SINGLE SPEED)	FKRT-5290	1
	78750009	RT GEAR BIG SIDE MOUNTING ASSEMBLY 1.00 MTR (SINGLE SPEED)	FKRT-5287	1
	78750040	RT GEAR BIG SIDE MOUNTING ASSEMBLY 2.00 MTR (ROBUST SINGLE SPEED)	FKRT-5313	1
	78750021	RT GEAR BIG SIDE MOUNTING ASSEMBLY 2.00 MTR (MULTISPEED)	FKRT-5296	1
	78750034	RT GEAR BIG SIDE MOUNTING ASSEMBLY 2.00 MTR (MULTISPEED) C TYPE	FKRT-5310	1
	78750018	RT GEAR BIG SIDE MOUNTING ASSEMBLY 2.00 MTR (SINGLE SPEED)	FKRT-5291	1
	78750024	RT GEAR BIG SIDE MOUNTING ASSEMBLY 2.00 MTR(ROBUST MULTISPEED)	FKRT-5299	1
	78750025	RT GEAR BIG SIDE MOUNTING ASSEMBLY 2.25 MTR (ROBUST MULTISPEED)	FKRT-5300	1
	78750041	RT GEAR BIG SIDE MOUNTING ASSEMBLY 2.25 MTR (ROBUST SINGLE SPEED)	FKRT-5314	1
	78750026	RT GEAR BIG SIDE MOUNTING ASSEMBLY 2.50 MTR (ROBUST MULTISPEED)	FKRT-5301	1
	78750027	RT GEAR BIG SIDE MOUNTING ASSEMBLY 2.75 MTR (ROBUST MULTISPEED)	FKRT-5302	1
2	78910002	DEAD HUB SIDE PLATE BIG - 18x33x28	FKRT-594	1
	78910003	DEAD HUB SIDE PLATE BIG - 19x33x25	FKRT-596	1
3	10260353	HEX HEAD BOLT M10x1.5x35		6
4	10270002	SPRING WASHER 10MM		6
5	10280002	NYLOCK NUT M10X1.5MM		6

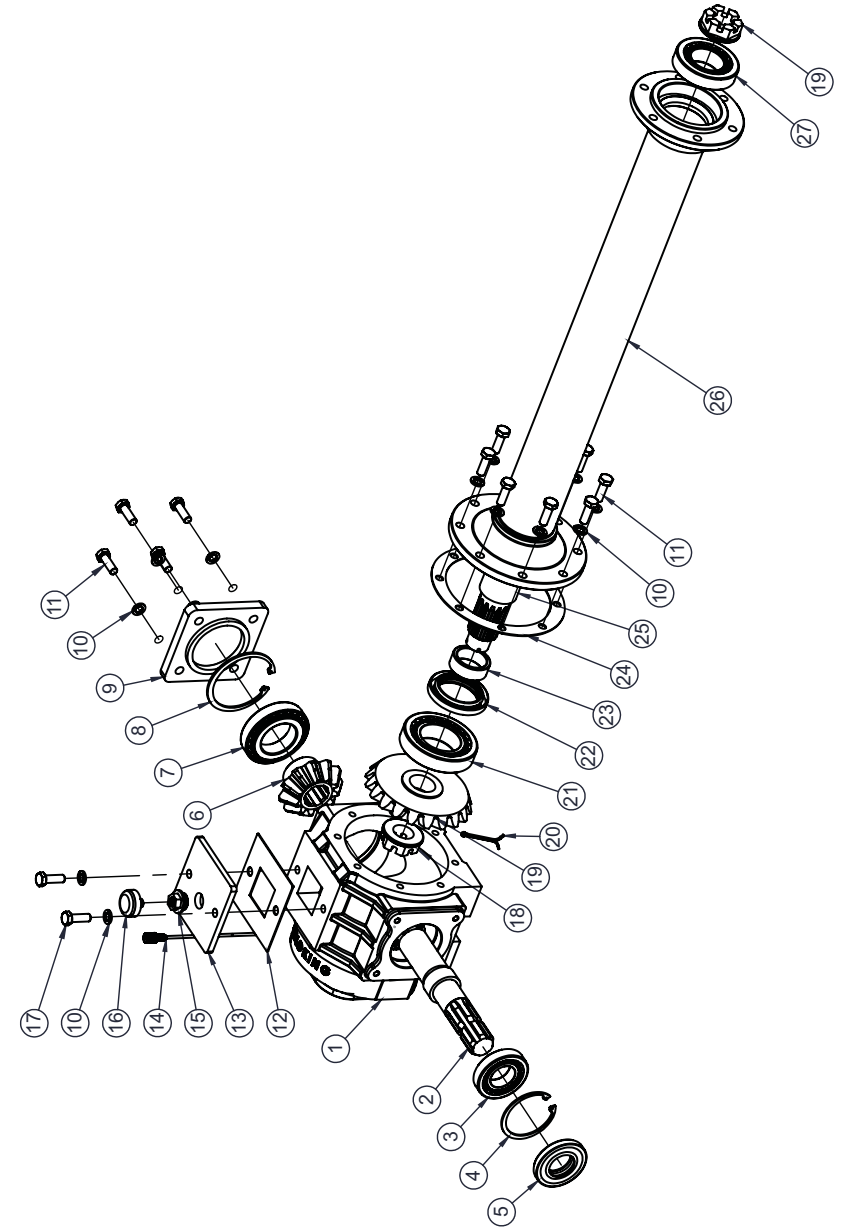
SR.NO.	ERP CODE	PLANK GUARD	PART NO	QTY
1	10150029	PLANK GUARD LHS	----	1
2	10150031	PLANK GUARD RHS	----	1

1	10150025	PTO SAFETY COVER	----	1
---	----------	------------------	------	---



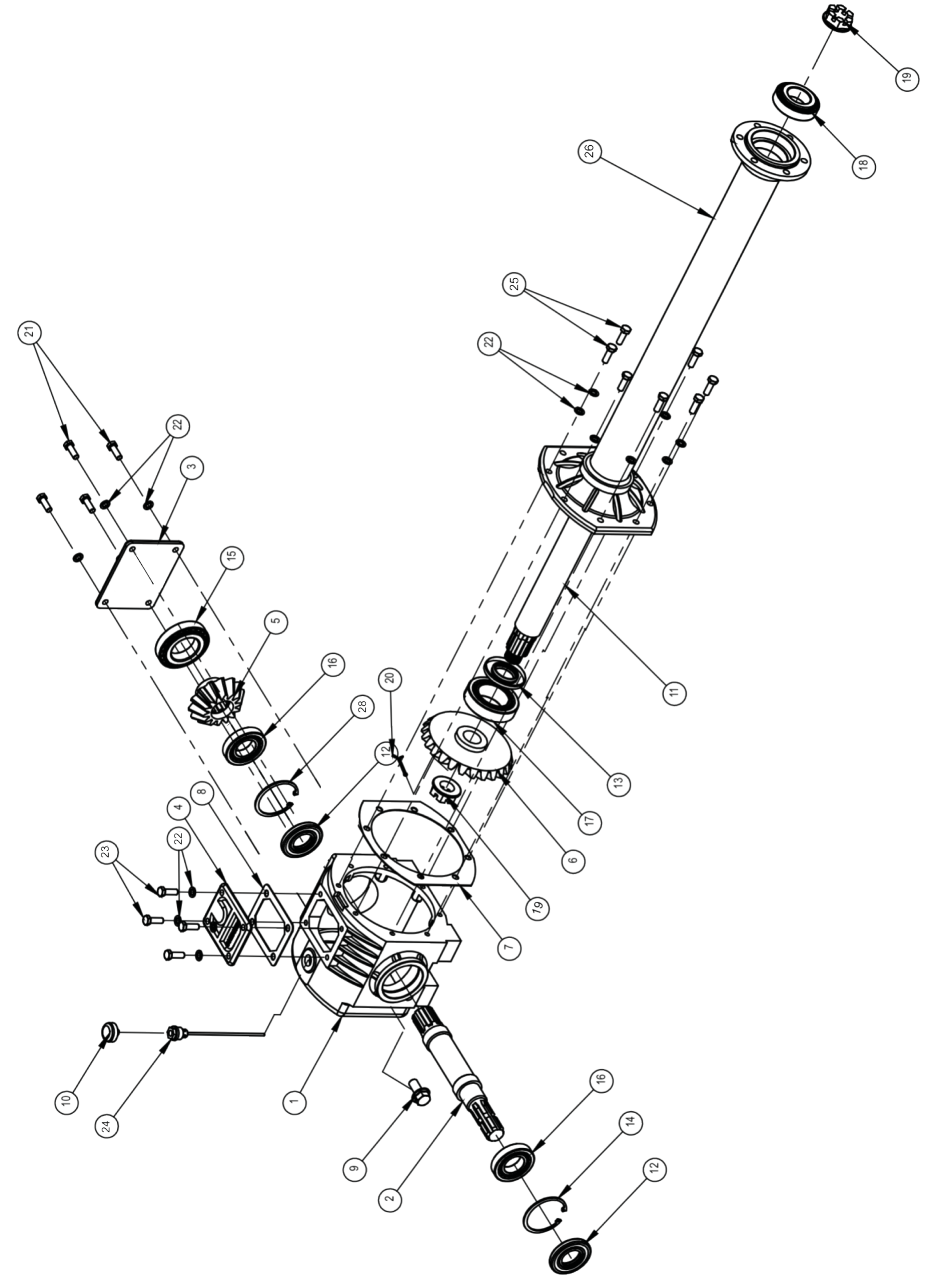
REGULAR SINGLE SPEED GEAR BOX ASSEMBLY (11X20)				
SR. NO.	ITEM CODE	DESCRIPTION	PART CODE	QTY.
1	10080001	GEAR BOX HOUSING	FKRT-177	1
2	10290010	PINION SHAFT	FKRT-178	1
3	10050049	BEARING 30207	----	1
4	10390022	INTERNAL CIRCLIP 72 MM	----	1
5	10010001	OIL SEAL 35X72X10	----	1
6	10250018	PINION GEAR 11T-6S	FKRT-182	1
7	10050097	BEARING 30210	----	1
8	10390014	INTERNAL CIRCLIP 95 MM	----	1
9	73620002	GEAR BOX REAR PLATE	FKRT-179	1
10	10270002	SPRING WASHER M10		14
11	10260396	HEX HEAD BOLT M10X1.5X30		12
12	10040033	GASKET GEAR BOX TOP PLATE	FKRT-188	1
13	73620003	GEAR BOX TOP PLATE	FKRT-180	1
14	10300001	DIP STICK	FKRT-185	1
15	10280010	BREATHER NUT M22X1.5	FKRT-183	1
16	10190001	BREATHER VALVE	FKRT-184	1
17	10260361	HEX HEAD BOLT M10X1.5X25	----	2
18	10280093	CASTLE NUT M30X1.5P	----	2
19	10250007	BEVEL GEAR 20T-14S	FKRT-181	1
20	10020097	SPLIT PIN 1/8 X 2.5 INCH	----	1
21	10050009	BEARING 32211	----	1
22	10010002	OIL SEAL 55X80X10	----	1
23	10070038	TRANSMISSION SHAFT BUSH 19MM	FKRT-186	1
24	10040009	GASKET BIG FLANGE TRANSMISSION PIPE	FKRT-192	1
25	10290026	TRANSMISSION SHAFT 1.00 MTR	FKRT-086	1
	10290006	TRANSMISSION SHAFT 1.25 MTR	FKRT-088	
	10290003	TRANSMISSION SHAFT 1.50 MTR	FKRT-090	
	10290009	TRANSMISSION SHAFT 1.75 MTR	FKRT-092	
	10290004	TRANSMISSION SHAFT 2.00 MTR	FKRT-094	
26	73820001	TRANSMISSION PIPE ASSEMBLY 1.00 MTR	FKRT-5071	1
	71590004	TRANSMISSION PIPE ASSEMBLY 1.25 MTR	FKRT-5072	
	73830001	TRANSMISSION PIPE ASSEMBLY 1.50 MTR	FKRT-5073	
	73840001	TRANSMISSION PIPE ASSEMBLY 1.75 MTR	FKRT-5074	
	73850001	TRANSMISSION PIPE ASSEMBLY 2.00 MTR	FKRT-5075	
27	10050013	BEARING 32209	----	1

REGULAR SINGLE SPEED GEAR BOX ASSEMBLY



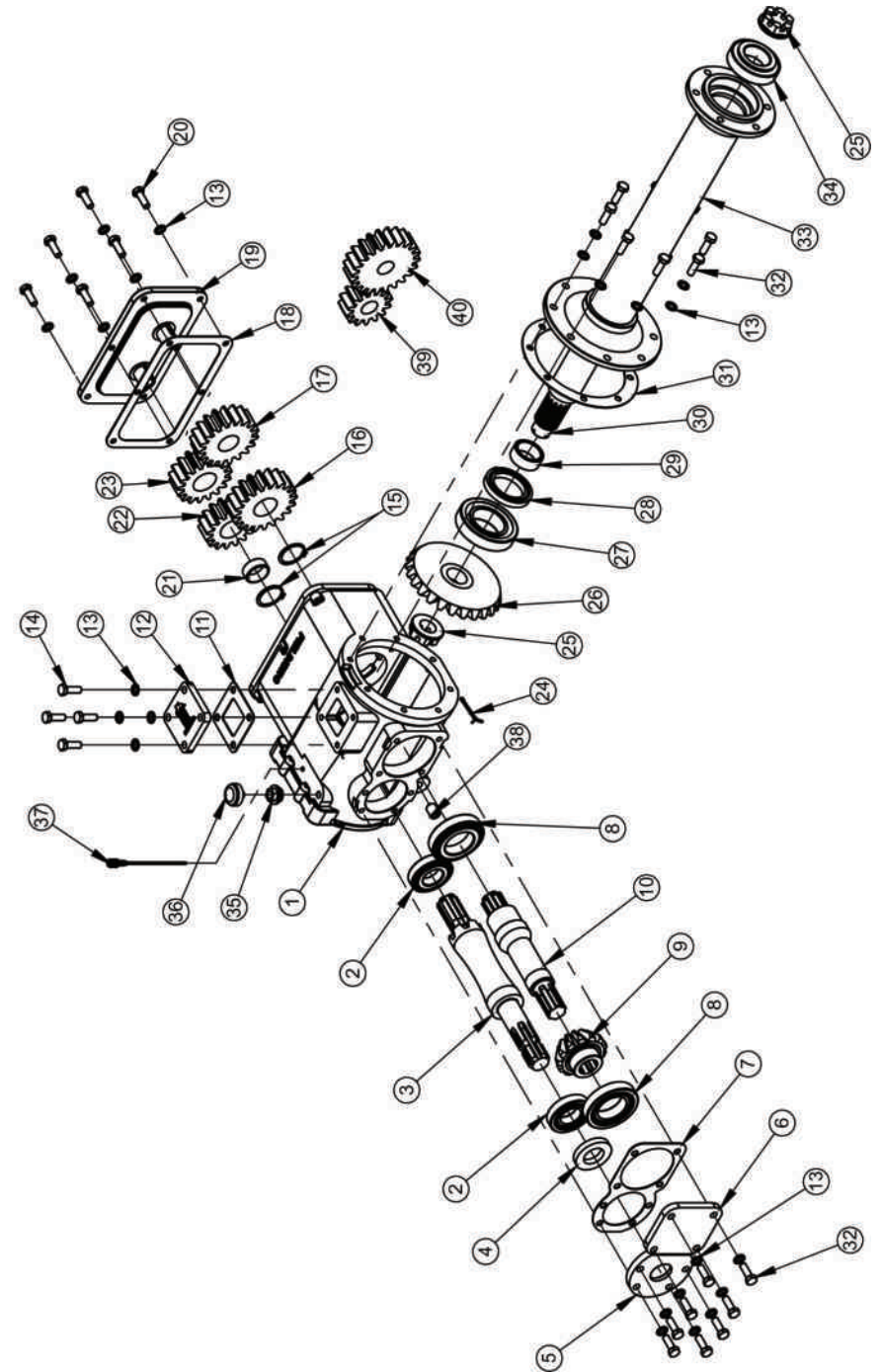
ROBUST SINGLE SPEED GEAR BOX ASSEMBLY (14X25)				
SL. NO.	PART CODE	PART DESCRIPTION	ERP CODE	QTY.
1	10080005	ROBUST GEAR BOX HOUSING	FKRT -207	1
2	10290023	PINION SHAFT (ROBUST)	FKRT -208	1
3	70090007	ROBUST GEAR BOX REAR BEARING PLATE	FKRT -209	1
4	70090008	ROBUST GEAR BOX TOP PLATE	FKRT -210	1
5	10250024	PINION GEAR 14 TEETH, 8 SPLINES	FKRT -211	1
6	10250022	BEVEL GEAR 25 TEETH, 8 SPLINES	FKRT -212	1
7	10040037	ROBUST GASKET BIG FLANGE	FKRT -214	1
8	10040061	ROBUST GASKET TOP PLATE	FKRT -216	1
9	10300118	DRAIN PLUG	FKRT -187	1
10	10260408	HEX BOLT M12X20X1.5		1
	10190001	BREATHER VALVE	FKRT-184	1
11		TRANSMISSION SHAFT		
	10290060	TRANSMISSION SHAFT 1.50 MTR.	FKRT-108	1
	10290030	TRANSMISSION SHAFT 1.75 MTR.	FKRT-106	1
	10290061	TRANSMISSION SHAFT 2.00 MTR.	FKRT-109	1
	10290046	TRANSMISSION SHAFT 2.25 MTR.	FKRT-107	1
12	10010005	OIL SEAL 40X80X10		1
13	10010065	OIL SEAL 60X80X10		1
14	10390005	CIRCLIP 80 MM		1
15	10050050	BEARING 30211		1
16	10050087	BEARING 30208		1
17	10050088	BEARING 33112		1
18	10050013	BEARING 32209		1
19	10280093	CASTLE NUT M30X1.5		2
20	10020097	SPLIT PIN /8 2.5"		2
21	10260396	HEX BOLT M10X30X1.5		4
22	10270002	SPRING WASHER M10		12
23	10270002	SPRING WASHER M10		4
24	10260361	HEX HEAD BOLT M10X25X1.5		4
25	10260353	HEX HEAD BOLT M10X35X1.5		8
26		TRANSMISSION PIPE ASSEMBLY		
	74380008	TRANSMISSION PIPE ASSEMBLY 1.50 MTR.	FKRT-5240	1
	73960001	TRANSMISSION PIPE ASSEMBLY 1.75 MTR.	FKRT-5086	1
	74380009	TRANSMISSION PIPE ASSEMBLY 2.00 MTR.	FKRT-5241	1
	74380001	TRANSMISSION PIPE ASSEMBLY 2.25 MTR.	FKRT-5242	1
27	73620006	BREATHER NUT WITH DEEP STICK ASSEMBLY		1
28	10390007	CIRCLIP 100MM		1

ROBUST SINGLE SPEED GEAR BOX ASSEMBLY (14X25)



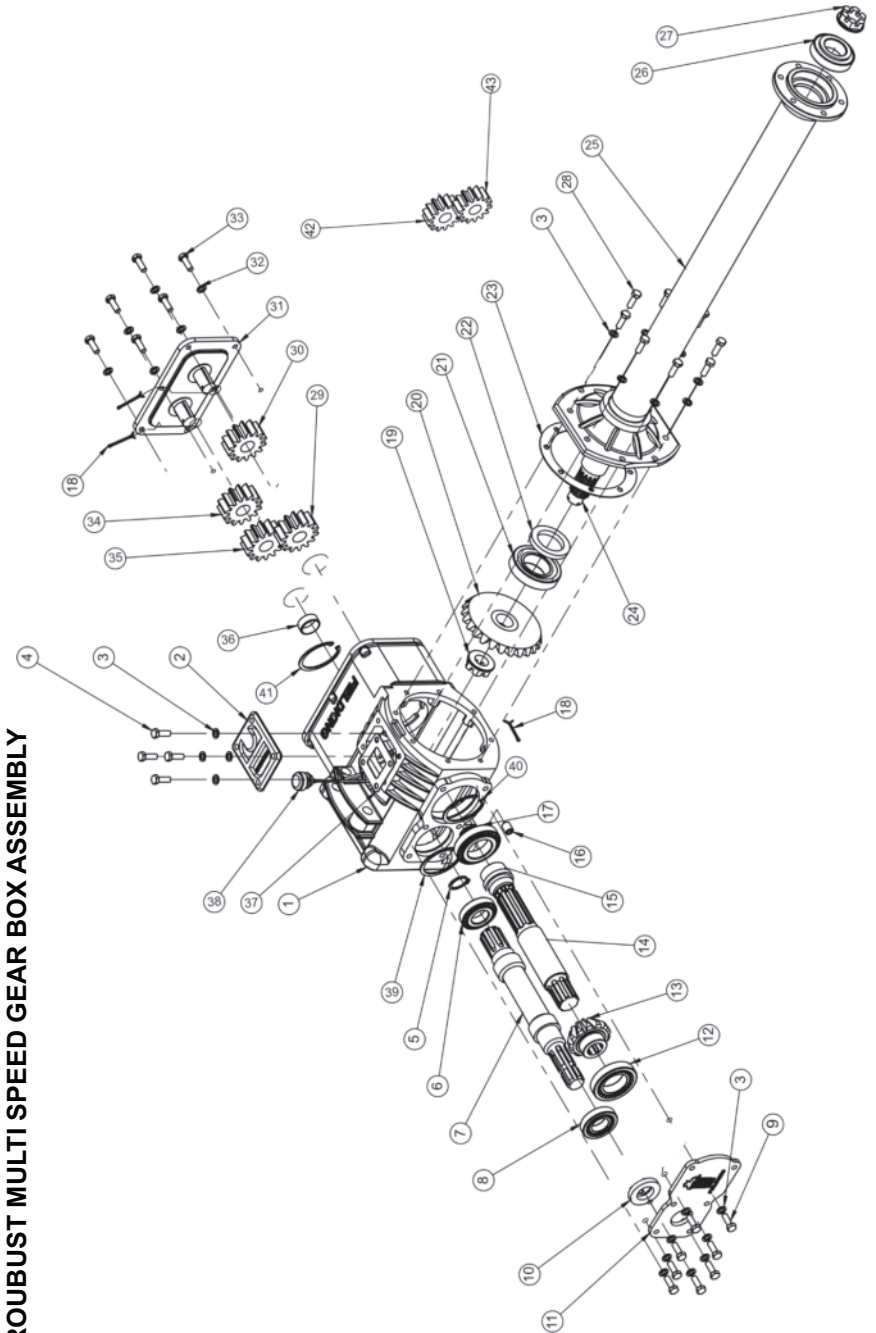
REGULAR MULTI SPEED GEAR BOX ASSEMBLY (13X25)				
SR. NO.	ITEM CODE	DESCRIPTION	PART CODE	QTY.
1	10080002	GEAR BOX HOUSING (13X25 MULTISPEED)	FKRT-235	1
2	10050100	BEARING 30207	----	2
3	10290001	DRIVE SHAFT	FKRT-236	1
4	10010006	OIL SEAL 35X62X10	----	1
5	71940007	MULTI SPEED GEAR BOX FRONT BEARING PLATE ROUND	FKRT-246	1
6	71940008	MULTI SPEED GEAR BOX FRONT BEARING PLATE SQUARE	FKRT-247	1
7	10040074	GASKET FRONT BEARING PLATE	FKRT-515	1
8	10050097	BEARING 30210	----	2
9	10250016	PINION GEAR 13T-6S	FKRT-238	1
10	10290025	PINION SHAFT	FKRT-237	1
11	10040042	GASKET GEAR BOX TOP PLATE	FKRT-249	1
12	71940009	GEAR BOX TOP PLATE	FKRT-248	1
13	10270002	SPRING WASHER 10MM	----	20
14	10260361	HEX HEAD BOLT M10X1.5X25	----	4
15	10390029	EXTERNAL CIRCLIP 35 MM	----	2
16	10250013	SPUR GEAR 20T -6S	FKRT-244	1
17	10250033	SPUR GEAR 19T -6S	FKRT-243	1
18	10040075	GASKET MULTI SPEED GEAR BOX REAR BEARING PLATE	FKRT-514	1
19	71940010	GEAR BOX REAR PLATE	FKRT-513	1
20	10260456	HEX HEAD BOLT M8X1.25X30	----	6
21	10070064	SPACER BUSH DRIVE SHAFT	FKRT-455	1
22	10250032	SPUR GEAR 16T -6S	FKRT-241	1
23	10250010	SPUR GEAR 17T -6S	FKRT-242	1
24	10020097	SPLIT PIN LOCK 1/8 2.5 INCH	----	1
25	10280093	CASTLE NUT M30X1.5	----	2
26	10250025	BEVEL GEAR 25T-14S	FKRT-239	1
27	10050009	BEARING 32211	----	1
28	10010002	OIL SEAL 55X80X10	----	1
29	100700 66	TRANSMISSION SHAFT BUSH 21MM	FKRT-456	1
30	10290052	TRANSMISSION SHAFT 1408S 1.00 MTR	FKRT-527	1
	10290051	TRANSMISSION SHAFT 1408S 1.25 MTR	FKRT-526	
	10290050	TRANSMISSION SHAFT 1408S 1.50 MTR	FKRT-525	
	10290049	TRANSMISSION SHAFT 1408S 1.75 MTR	FKRT-524	
	10290048	TRANSMISSION SHAFT 1408S 2.00 MTR	FKRT-518	
31	10040046	GASKET BIG FLANGE TRANSMISSION PIPE	FKRT-255	1
32	10260396	HEX HEAD BOLT M10X1.5X30	----	16
33	73820002	TRANSMISSION PIPE ASSEMBLY 1.00 MTR	FKRT-5256	1
	73920002	TRANSMISSION PIPE ASSEMBLY 1.25 MTR	FKRT-5255	
	73830002	TRANSMISSION PIPE ASSEMBLY 1.50 MTR	FKRT-5254	
	73840002	TRANSMISSION PIPE ASSEMBLY 1.75 MTR	FKRT-5253	
	73850002	TRANSMISSION PIPE ASSEMBLY 2.00 MTR	FKRT-5248	
34	10050013	BEARING 32209	----	1
35	10280010	BREATHER NUT M22X1.5	FKRT-183	1
36	10190001	BREATHER VALVE	FKRT-184	1
37	10300122	DIP STICK	FKRT-253	1
38	10300118	DRAIN PLUG	FKRT-187	1
39	10250041	SPUR GEAR 14T -6S (1000 RPM)	FKRT-434	1
40	10250042	SPUR GEAR 22T -6S (1000 RPM)	FKRT-435	1

REGULAR MULTISPEED (13X25) GEAR BOX ASSEMBLY

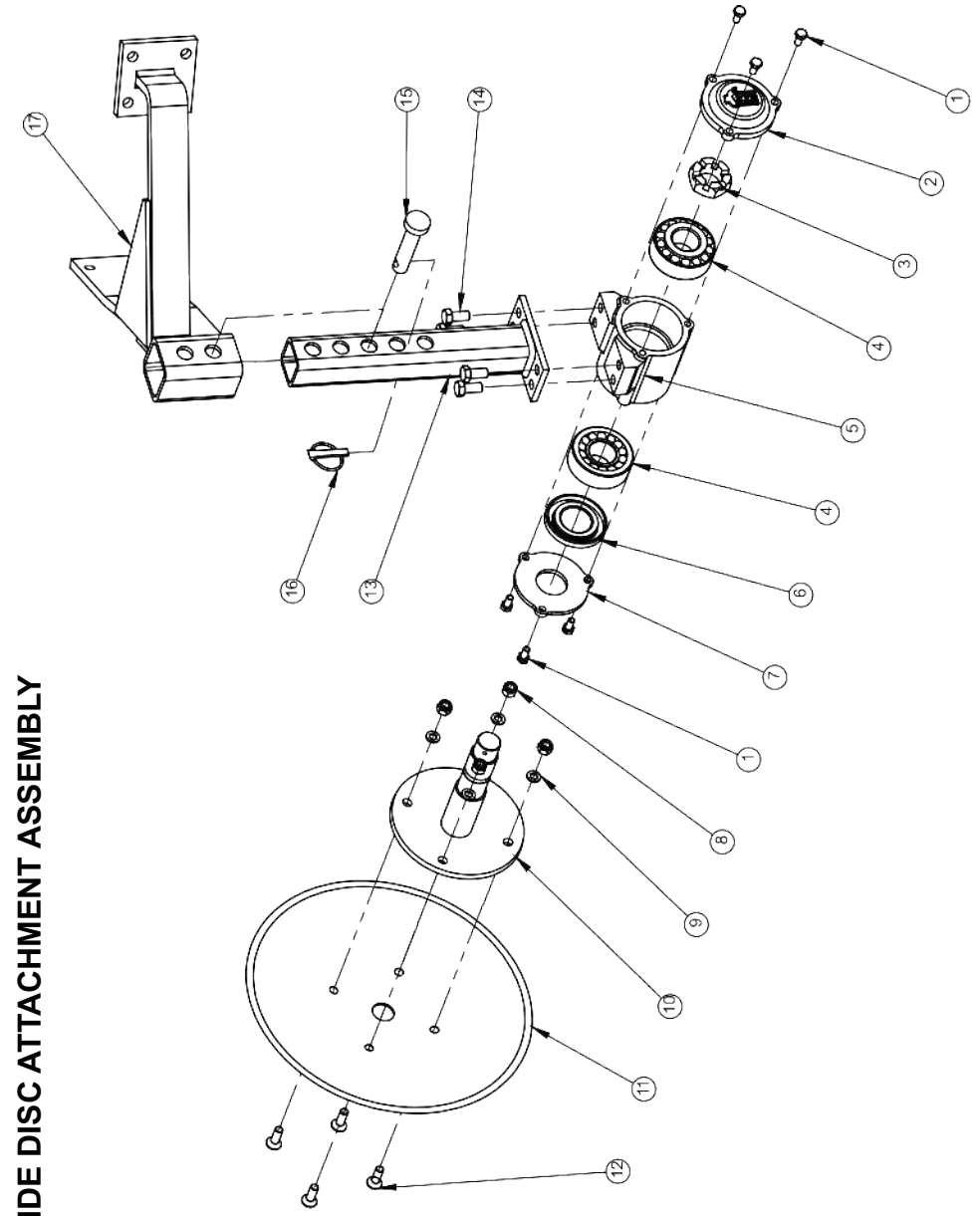


ROBUST (14x25) MULTI SPEED				
SL. NO.	ERP CODE	PART DESCRIPTION	PART CODE	QTY
1	10080007	GEAR BOX HOUSING MULTISPEED	FKRT-436	1
2	70090008	MS GEAR BOX TOP PLATE	FKRT-210	1
3	10270002	SPRING WASHER M10		18
4	10260361	HEX HEAD BOLT M10X1.5X25		4
5	10390015	EXTERNAL CIRCLIP 42 MM		2
6	10050018	BEARING 30209		1
7	10290045	DRIVE SHAFT 402 MM LENGTH	FKRT-444	1
8	10050021	BEARING 32208		1
9	10260396	HEX HEAD BOLT M10X1.5X30		6
10	10010005	OIL SEAL 40X80X10		1
11	70090009	ROBUST M.SPEED FRONT BEARING PLATE	FKRT-440	1
12	10050050	BEARING 30211		1
13	10250024	PINION GEAR 14 TEETH/8 SPLINES	FKRT-211	1
14	10290044	PINION SHAFT 287 MM LENGTH	FKRT-443	1
15	10070062	SPLINED BUSH PINION SHAFT 8 SPLINES	FKRT-445	1
16	10300118	DRAIN PLUG	FKRT-187	1
17	10050050	BEARING 30211		1
18	10020097	SPLIT PIN LOCK 1/8 X 2.5INCH		2
19	10280093	CASTLE NUT 30X1.5		1
20	10250022	BEVEL GEAR 25 TEETH-8 SPLINES	FKRT-212	1
21	10050088	BEARING 33112		1
22	10010065	OIL SEAL 60X80X10		1
23	10040037	GASKET BIG FLANGE MS	FKRT-214	1
		TRANSMISSION SHAFT		
	10290072	TRANSMISSION SHAFT 1.25 MTR.	FKRT-556	1
	10290056	TRANSMISSION SHAFT 1.50 MTR.	FKRT-501	1
	10290057	TRANSMISSION SHAFT 1.75 MTR.	FKRT-502	1
	10290058	TRANSMISSION SHAFT 2.00 MTR.	FKRT-503	1
	10290059	TRANSMISSION SHAFT 2.25 MTR.	FKRT-504	1
	10290062	TRANSMISSION SHAFT 2.50 MTR.	FKRT-540	1
	10290063	TRANSMISSION SHAFT 2.75 MTR.	FKRT-541	1
		TRANSMISSION PIPE ASSEMBLY		
	74380016	TRANSMISSION PIPE ASSEMBLY 1.25 MTR.	FKRT-5284	1
	74380010	TRANSMISSION PIPE ASSEMBLY 1.50 MTR.	FKRT-5243	1
	74380011	TRANSMISSION PIPE ASSEMBLY 1.75 MTR.	FKRT-5244	1
	74380012	TRANSMISSION PIPE ASSEMBLY 2.00 MTR.	FKRT-5245	1
	74380013	TRANSMISSION PIPE ASSEMBLY 2.25 MTR.	FKRT-5246	1
	74380014	TRANSMISSION PIPE ASSEMBLY 2.50 MTR.	FKRT-5278	1
	74380015	TRANSMISSION PIPE ASSEMBLY 2.75 MTR.	FKRT-5279	1
24				
25				
26	10050013	BEARING 32209		1
27	10280093	CASTLE NUT 30X1.5		1
28	10260353	HEX HEAD BOLT M10X1.5X35		8
29	10250047	SPUR GEAR 20 TEETH 8 SPLINE	FKRT-450	1
30	10250046	SPUR GAER 19 TEETH 8 SPLINE	FKRT-449	1
31	10150018	ROBUST BACK COVER PLATE GEAR BOX HOUSING	FKRT-437	1
32	10270001	SPRING WASHER M8		6
33	10260360	HEX HEAD BOLTM8X1.5X25		6
34	10250045	SPUR GAER 17 TEETH-8SPLINE	FKRT-448	1
35	10250044	SPUR GEAR 16 TEETH-8SPLINE	FKRT-447	1
36	10290042	SPACER DRIVE SHAFT ROBUST MULTI	FKRT-438	2
37	10040061	GASKET TOP PLATE	FKRT-216	1
38	10300120	ROBUST DIP STICK	FKRT-217	1
39	10390005	INTERNAL CIRCLIP B80		1
40	10390007	CIRCLIP 100MM		1
41	10390032	CIRCLIP 85 MM		1
42	10250043	SPUR GAER 14 TEETH 8 SPLINE		1
43	10250048	SPUR GAER 22 TEETH 8 SPLINE		1

ROBUST MULTI SPEED GEAR BOX ASSEMBLY

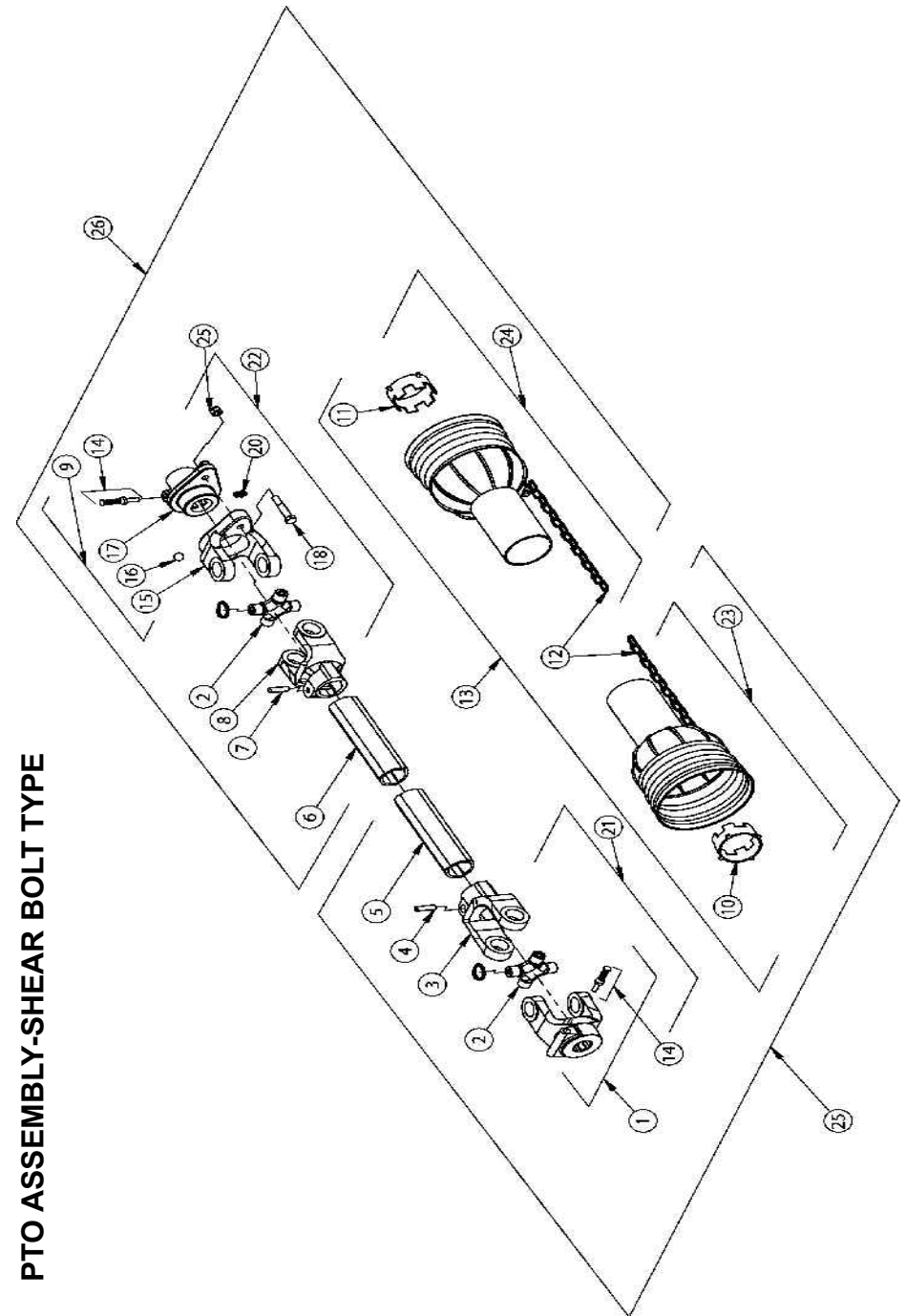


SIDE DISC ASSEMBLY			
SR. NO.	DESCRIPTION	PART CODE	QTY.
1	HEX BOLT M8X20X1.25	10260188	6
2	SIDE DISC HUB FRONT COVER	FKRT-353	2
3	CASTLE NUT M30X1.5	10280012	1
4	BEARING 32307	10050008	2
5	SIDE DISC HUB	FKRT-352	1
6	OIL SEAL 40X80X10	10010005	1
7	SIDE DISC HUB BACK COVER	FKRT-354	1
8	NYLOCK NUT M10X1.5mm	10280002	3
9	SPRING WASHER M10	10270002	3
10	SIDE DISC HUB AXLE (COMPLETE SET)	FKRT-355	1
11	PLAIN DISC 14"	FKRT-356	1
12	CSK BOLT M10X30X1.5mm	10260051	3
13	SIDE DISC MOUNTING PIPE ASSEMBLY	FKRT-5113	1
14	HEX BOLT M12X20X1.75 (10.9G)	10260057	4
15	PIN 19X90	10020026	1
16	LINCH PIN M10	10020022	1
17	SIDE DISC ATTACHMENT FRAME	FKRT-5112	1



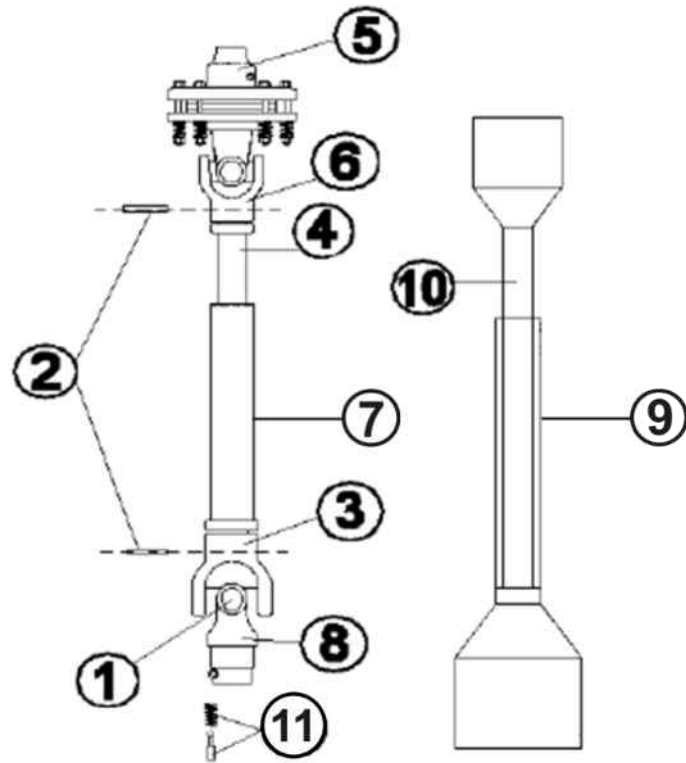
**SIDE DISC ATTACHMENT ASSEMBLY**

ROTARY TILLER PTO SHAFT					
Sr. No.	DESCRIPTION	PART CODE			
		540 RPM		1000 RPM	
		CUT	FULL	CUT	FULL
		10310059	10310060	10310083	10310084
1	PUSH PIN YOKE	FKRT-606			FKRT-394
2	CROSS JOURNAL SET	FKRT-604			
3	OUTER YOKE	FKRT-368			
4	ROLL PIN FOR OUTER TUBE	FKRT-369			
5	OUTER TUBE	FKRT-609	FKRT-609		FKRT-609
6	INNER TUBE	FKRT-610	FKRT-610		FKRT-610
7	ROLL PIN FOR INNER TUBE	FKRT-372			
8	INNER YOKE	FKRT-605			
9	COMPLETE SHEAR BOLT	FKRT-5229			
10	GUARD RETAINING COLLER FOR OUTER TUBE	FKRT-375			
11	GUARD RETAINING COLLER FOR INNER TUBE	FKRT-376			
12	SAFETY CHAIN	FKRT-377			
13	COMPLETE GUARD ASSEMBLY	FKRT-5231	FKRT-5232		FKRT-5232
14	PUSH PIN SET	FKRT-379			
15	SHEAR BOLT YOKE	FKRT-607			
16	BALL	FKRT-381			
17	SHEAR BOLT HUB	FKRT-608			
18	SAFETY BOLT M10X1.5X65	10260054			
19	NUT M10X1.5	10280002			
20	GREASE FITTING	FKRT-384			
21	U JOINT FOR OUTER TUBE	FKRT-5224			FKRT-5236
22	U JOINT FOR INNER TUBE	FKRT-5228			
23	HALF FEMALE GUARD ASSEMBLY	FKRT-5226	FKRT-5234		FKRT-5234
24	HALF MALE GUARD ASSEMBLY	FKRT-5230	FKRT-5233		FKRT-5233
25	HALF FEMALE SHAFT	FKRT-5223			
26	HALF MALE SHAFT	FKRT-5230			



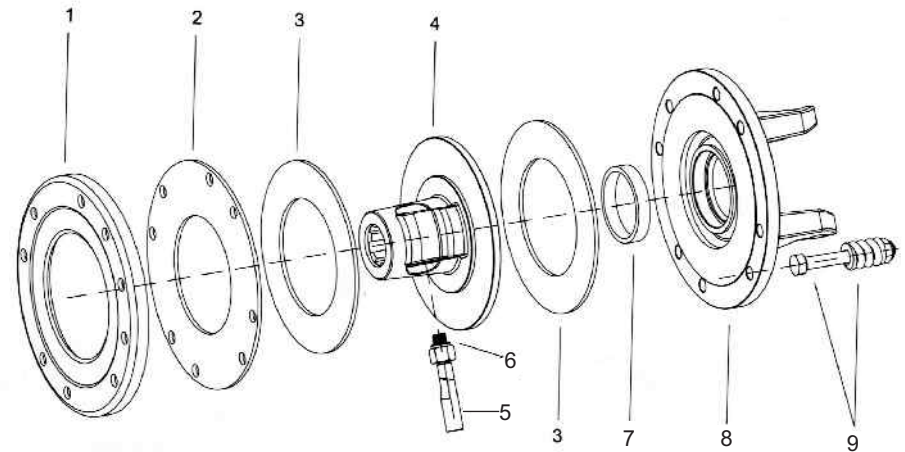
PTO ASSEMBLY-SHEAR BOLT TYPE

**PTO SHAFT ASSEMBLY - SLIP CLUTCH TYPE (10310062)**  
(Optional)



S.No.	Part Name	CUT	Quantity
1	CROSS JOURNAL SET	FKRT-367	2
2	SPRING DOWEL PIN SET	10210031	2
3	OUTER YOKE	FKRT-368	1
4	INNER TUBE	FKRT-382	1
5	SLIP CLUTCH ASSEMBLY	10310127	1
6	INNER YOKE	FKRT-373	1
7	OUTER TUBE	FKRT-380	1
8	PUSH PIN YOKE	FKRT-366	1
9	HALF FEMALE GUARD ASSEMBLY	FKRT-5226	1
10	HALF MALE GUARD ASSEMBLY	FKRT-5230	1
11	PUSH PIN SET	FKRT-379	1

**SLIP CLUTCH ASSEMBLY (10310127)**



SLIP CLUTCH ASSEMBLY(10310127)			
SR.NO.	PART NAME	ITEM CODE	QTY
1	PRESSURE PLATE	10310128	1
2	INTERNAL DISC	10310129	1
3	FRICTION LINING	10310130	2
4	HUB	10310131	1
5	HUB BOLT M12X70X1.75P	10260407	2
6	NYLOCK NUT M12X1.75P	10280025	2
7	BUSHING	10310132	1
8	FLANGED SPLINE	10310133	1
9	COMPLETE BOLT & SPRING	10310134	8

## DELIVERY CHECKLIST

Dealer Pre-Delivery (Please Tick)	Please Complete all Dealer information Below
<p><b>1. Dealer Pre-Delivery Checklist</b></p> <p>1. The customer or person responsible has been given the operator's manual.</p> <p>2. The customer undertakes to read the complete operator's manual and understands all aspects of the manual before operation of the machine.</p> <p>3. All safety, operational and maintenance information have been explained and demonstrated.</p> <p>4. All greasing and oil points, stickers, guarding and ID plate have been identified and physically pointed out.</p> <p>5. The customer agrees that it is his responsibility to read and carry out the safety, maintenance and operation as per this operator's manual.</p>	<p><b>Dealer Information</b></p> <p>Dealer's Name.....</p> <p>Address.....</p> <p>State..... Postcode.....</p> <p>Phone..... Fax.....</p> <p>Email.....</p> <p>Service Person.....</p> <p>I confirm that the pre-delivery service was performed on this machine.</p> <p>Signature.....</p> <p>Date.....</p> <p>Comments.....</p>
Customer Delivery (Please Tick)	Please Complete all Customer Information Below
<p><b>2. Customer Delivery Checklist</b></p> <p>1. The customer or person responsible has been given the operator's manual.</p> <p>2. The customer undertakes to read the complete operator's manual and understands all aspects of the manual before operation of the machine.</p> <p>3. All safety, operational and maintenance information have been explained and demonstrated.</p> <p>4. All greasing and oil points, stickers, guarding and ID plate have been identified and physically pointed out.</p> <p>5. The customer agrees that it is his responsibility to read and carry out the safety, maintenance and operation as per this operator's manual.</p>	<p><b>Customer Information</b></p> <p>Customer's Name.....</p> <p>Address.....</p> <p>State..... Postcode.....</p> <p>Phone..... Fax.....</p> <p>Email.....</p> <p>Delivery Person.....</p> <p>I confirm that all of the delivery checks were explained and performed.</p> <p>Signature.....</p> <p>Delivery Date.....</p> <p>Comments.....</p>

# FIELDKING

## WARRANTY CARD Customer Copy

CUSTOMER NAME Mr./ Mrs :

ADDRESS :

MOBILE NO. :

Email :

NAME OF IMPLEMENT :

MODEL NO. :

YEAR OF Mfg. :

SERIAL NO. :

REGISTRATION NO. :

DATE OF PURCHASING :

NAME OF DEALER :

Customer's Signature

Dealer's Signature



BERI UDYOG PVT LTD

Corporate Office:

Plot No. 235-236 & 238-240, Sec-3, HSIIDC, Karnal- 132001 (Haryana), India

☎ +91 184 2221571/ 72/ 73

✉ info@fieldking.com, www.fieldking.com



# FIELDKING

## WARRANTY CARD Company Copy

CUSTOMER NAME Mr./ Mrs :

ADDRESS :

MOBILE NO. :

Email :

NAME OF IMPLEMENT :

MODEL NO. :

YEAR OF Mfg. :

SERIAL NO. :

REGISTRATION NO. :

DATE OF PURCHASING :

NAME OF DEALER :

Customer's Signature

Dealer's Signature



**BERI UDYOG PVT LTD**

Corporate Office:

Plot No. 235-236 & 238-240, Sec-3, HSIIDC, Karnal- 132001 (Haryana), India

+91 184 2221571/ 72/ 73

info@fieldking.com, www.fieldking.com

# FIELDKING

## WARRANTY CARD Dealer Copy

CUSTOMER NAME Mr./ Mrs :

ADDRESS :

MOBILE NO. :

Email :

NAME OF IMPLEMENT :

MODEL NO. :

YEAR OF Mfg. :

SERIAL NO. :

REGISTRATION NO. :

DATE OF PURCHASING :

NAME OF DEALER :

Customer's Signature

Dealer's Signature



**BERI UDYOG PVT LTD**

Corporate Office:

Plot No. 235-236 & 238-240, Sec-3, HSIIDC, Karnal- 132001 (Haryana), India

+91 184 2221571/ 72/ 73

info@fieldking.com, www.fieldking.com