

-  Tillage
-  Haulage
-  Landscaping
-  Seeding & Plantation
-  Crop Protection
-  Harvest
-  Post Harvest

*Solutions...*



## BERI UDYOG PVT LTD

Corporate Office:

Plot No. 235 to 240, Sec-3, HSIIDC, Karnal- 132001 (Haryana), India

+91 184 2221571/ 72/ 73    info@fieldking.com, www.fieldking.com



## Mounted Disc Plough



➤ Operator Manual   ➤ Service Manual   ➤ Part Catalogue

# CONGRATULATIONS!

You have invested in one of the best implements of its type in the market today.

The care you give your "FIELDKING" implement will greatly determine your satisfaction with its performance and its service life. A careful study of this manual will give you a thorough understanding of your new implement before operating.

If your manual is lost or destroyed, "FIELDKING" will be glad to provide you a new copy. Visit to nearest dealership & get a copy. Most of our manuals can also be downloaded from our website at [www.fieldking.com](http://www.fieldking.com).

As an authorized "FIELDKING" dealer, we stock genuine "FIELDKING" parts which are manufactured with the same precision and skill as our original equipment. Our trained service persons are well informed on methods required to service "FIELDKING" equipments and are ready to help you.

Should you require additional information or assistance, please contact us.

YOUR AUTHORIZED

FIELDKING DEALER

BECAUSE "FIELDKING" MAINTAINS AN ONGOING PROGRAMME OF PRODUCT IMPROVEMENT, WE RESERVE THE RIGHT TO MAKE IMPROVEMENTS IN DESIGN OR CHANGE IN SPECIFICATION WITHOUT INCURRING ANY OBLIGATION TO INSTALL THEM ON UNITS PREVIOUSLY SOLD. BECAUSE OF THE POSSIBILITY THAT SOME PHOTOGRAPHS IN THIS MANUAL WERE TAKEN OF PROTOTYPE MODELS, PRODUCTION MODELS MAY VARY IN SOME DETAIL. IN ADDITION, SOME PHOTOGRAPHS MAY SHOW SHIELDS REMOVED FOR THE PURPOSE OF CLARITY. NEVER OPERATE THIS IMPLEMENT WITHOUT ALL SHIELDS IN PLACE.

## TO THE PURCHASER

This manual contains valuable information about your new "FIELDKING" mounted disc plough. It has been carefully prepared to give you helpful suggestions for operating, adjusting, servicing and ordering spare parts.

Keep this manual in a convenient place for quick and easy reference. Study it carefully. You have purchased a dependable and sturdy mounted disc plough but only by proper care and operation you can expect to receive the service and long life designed and built into it.

Sometime in the future your mounted disc plough may need new parts to replace which are worn out or broken. If so, go to your dealer and provide him equipment's detail like model and part number.

### CUSTOMER INFORMATION

Name \_\_\_\_\_

Purchased From \_\_\_\_\_

Date of Purchase \_\_\_\_\_

Model No. \_\_\_\_\_

Serial No. \_\_\_\_\_

## PURCHASER / OPERATOR'S RESPONSIBILITY

1. Read and understand the information contained in this manual.
2. Operate, lubricate, assemble and maintain the equipment in accordance with all instructions and safety procedures in this manual.
3. Inspect the equipment and replace or repair any parts that are damaged or worn out which under continued operation would cause damage, wear to other parts, or cause a safety hazard.
4. Return the equipment or parts to the authorized "FIELDKING" dealer, from where it was purchased, for service or replacement of defective parts that are covered by warranty. (The "FIELDKING" Factory may inspect equipment or parts before warranty claims are honored.)
5. All costs incurred by the dealer for traveling to or transporting the equipment for warranty inspection and claims will be borne by the customer.

# INDEX

## **1. TECHNICAL DATA**

- 1.1 Introduction
- 1.2 Warranty
- 1.3 When the warranty becomes void
- 1.4 Warning signals

## **2. USAGE INSTRUCTIONS**

- 2.1 Before use
- 2.2 Attaching plough to the tractor
- 2.3 Note

## **3. TRACTOR PREPARATION**

- 3.1 Instructions for tractor preparation
- 3.2 Adjustments
- 3.3 Warning for driver
- 3.4 Safety
- 3.5 Draft of disc plough
- 3.6 Adjustments for deeper ploughing

## **4. MAINTENANCE**

- 4.1 Maintenance instructions
- 4.2 Storage of machine after work
- 4.3 Lubrication
- 4.4 Instruction for driver

## **5. TROUBLE SHOOTING**

## **6. INSTRUCTION, PICTURES AND CODE NO. FOR TRACTOR OPERATOR/ DRIVER**

# 1. TECHNICAL DATA

## 1.1 INTRODUCTION

This handbook contains the use and maintenance instructions with a list of the spare parts of the disc plough.

This disc plough is equipped with heavy-duty tubular frame specially designed for deep ploughing / land preparation of rough soil.

Regular and satisfactory operations together with economic and long lasting use of the implement depend on the compliance with instructions given in this handbook.

Compliance with the instructions in this handbook is also important since Manufacturer declines all and every responsibility for damage to persons or property caused by negligence and failure to comply with these instructions.

## 1.2 WARRANTY

When the machine is delivered, check that it has not been subjected to damage during transport and that the accessories are in a perfect condition and complete.

Any claims following the receipt of damaged goods shall be presented in writing within 8 days from the receipt of the goods.

The purchaser may only make the claims under warranty when he has complied with the warranty conditions in the supply contract.

## 1.3 WHEN THE WARRANTY BECOMES VOID

Besides the cases specified in the supply agreement, the warranty shall in any case become void.

1. When the implement has been used beyond the specified power limit like (Tractor Horse Power)
2. When repairs made by the customer without authorization from the manufacturer or owing to installation of spurious spare parts, the machine is subjected to variations and the damage can be ascribed to these variations.
3. When the user has failed to comply with the instructions in this handbook.
4. If the implement is used in very hard/stony soil no warranty of discs will be given.
5. If the implement is not lifted while taking a turn of the tractor no warranty of any breakage of coulter assembly (coulter bearing and coulter disc) would be allowed.
6. No warranty will be given if the service and greasing is not done on time.

## 1.4 WARNING SIGNALS

1. Thoroughly read the instruction manual before proceeding with the various operations.
2. Keep maintenance and warranty according to this handbook.

## 2. USAGE INSTRUCTIONS

### 2.1 BEFORE USE

Before mounting of disc plough make sure that all nuts and bolts are properly secured.

### 2.2 ATTACHING THE PLOUGH TO THE TRACTOR

1. Place the plough duly leveled on the flat piece of land.
2. Reverse the tractor to the plough ( Do not drag the plough up the tractor)
3. Attach the left arm of the tractor to the plough first.
4. Attach the central arm to the plough. To attach, turn the screws on both sides to an equal length. If the arm is too short or too long, turn the screw to adjust both at the same time until aligned with the hole on the central arm.
5. To attach the lower right arm, turn the screw until the mounting pin is at the same level as the hole on the tractor arm. If the gap between hole and mounting pin is too close or too distant, turn the control arm in or pull it away to an appropriate distance. You may have to adjust both height and distance at the same time. When the hole at tractor arm and mounting pin are even, insert the pin in the hole and lock it with the lynch pin.
6. After attaching the plough lift it and adjust the control arm parallel to the ground. When you look from both rear or sideways, the discs should all be touching the ground uniformly.

### 2.3 NOTE

1. The plough will work best when the right wheel of the tractor is inside the previously ploughed furrow. Readjust the plough alignments again if necessary.
2. To get good results from the plough discs should be replaced when their diameter is reduced to 22".

## 3. TRACTOR PREPARATION

### 3.1 INSTRUCTIONS FOR TRACTOR PREPARATION

The following are typical instructions for preparing a tractor for operation.

1. The horsepower of tractor selected should match the implement.

2. Adjust the front and rear wheel track width.
3. Provide adequate front end ballast for tractor stability.
4. Provide proper rear furrow wheel weight.
5. All plough adjustment should be carried out.
6. Select load and depth control setting according to tractor operators manual.

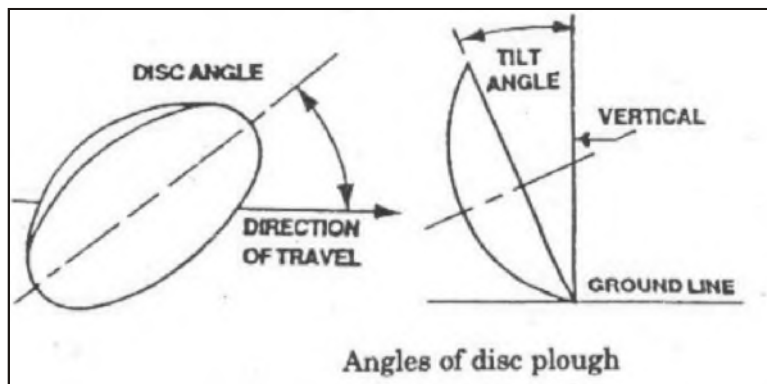
### 3.2 ADJUSTMENTS

In order to get better results, the following adjustments are necessary:

#### 1. Cutting Angle Adjustments

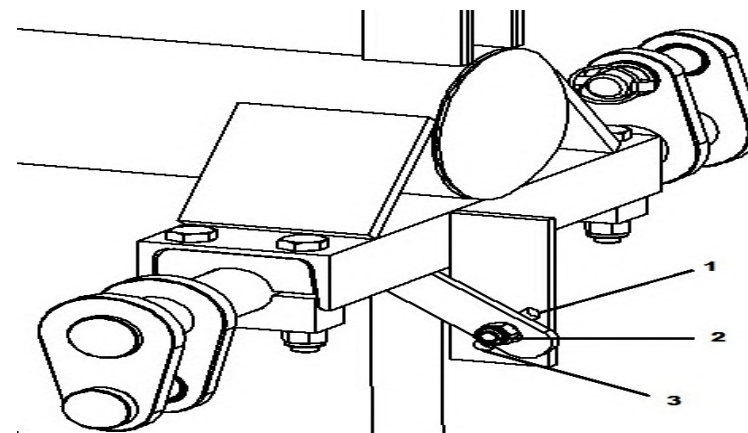
Discs would not cut if they are rolled straight ahead. They must be set at an angle. Provision is made in the plough standard for the adjustment of the horizontal disc angle and vertical tilt angle to obtain optimum disc operation in different soil conditions.

- a) Disc Angle is the angle which the plain of cutting edge makes with the line of travel. It is normally  $42^\circ - 47^\circ$ . Reducing this angle increases the disc rotation with respect to ground speed and reduces the tendency of the plough to over cut. Increasing the disc angle improves the disc penetration.
- b) Tilt Angle is the angle which the plain of the cutting edge makes with the vertical line. It ranges from  $15^\circ - 25^\circ$ . Increasing the tilt angle improves disc penetration in heavy, sticky soils. Decreasing the tilt angle improves disc penetration in loose and brittle soils.



#### 2. Width of cut adjustment

Every disc plough has a particular width of cut ranging from 18-25 cm's depending on the diameter of the blade. However to suit various draft and penetration requirements the width of the cut for the front disc can be adjusted with the help of drawbar. Drawbar has an index line which can be lined up with different (1, 2, 3) markings on the drawbar carrier as shown.



#### 3. Leveling the plough

The level of the plough is controlled by the tractor top link. If the rear end of the plough beam is higher than the front end of the beam, lengthen the top link. If rear end of the plough beam is lower than the front end, then shorten the top link. Lateral leveling is controlled by adjusting the length of the tractor right lower link. These adjustments must be made with the plough prior to operation.

#### 4. Tightening the bearing

Bearings must be kept tight. Tighten the castle nuts until the disc binds the hub.

#### 5. Scrapper adjustments

Scrapers are set low enough to catch and turn the furrow slice before it falls away from the disc. For deeper ploughing, the scrapper has to be set a little higher. For sticky soils, set them closer to the disc. The research study data reveals that mould board type scrapper performs the best, but in sticky soils use of hoe type scrapper is better.

### 3.3 WARNING FOR DRIVER

1. Before ploughing check all nuts and bolts of the disc plough.
2. Don't plough on stony soil.
3. Tractor should be in high first gear.
4. If soil is hard then plough the field at least twice.
5. Make sure that the shocker spring is tight.
6. Lift the disc plough on every turn.
7. Be vigilant about the tree roots and stones.
8. Keep proper distance from disc plough when disc plough is in working.
9. Lift the plough before approaching the road.

### 3.4 SAFETY

#### Understanding the Machine Safety Labels



**Safety-Alert Symbol**

The machine safety labels shown in this section are placed in important areas on your machine to draw attention to potential safety hazards.

On your machine the words DANGER, WARNING and CAUTION are used with this safety-alert symbol. DANGER identifies the most serious hazards.

The operator's manual also explains any potential safety hazards whenever necessary.

► Before ploughing with mounted disc plough take care that nobody stands near it.



**In order to protect yourself always wear adequate clothes and shoes during the operations.**



**Never allow riders on the tractor or implement unless an additional seat is available.**



**Be careful when moving around steep gradient to avoid sharp turn.**



**Never transport the implement on rough roads during the night. When operating, avoid sharp turns that may cause tractor colliding with the implement.**

### 3.5 DRAFT OF DISC PLOUGH

The disc plough is lighter in draft than the mouldboard plough, turning same volume of soil in similar conditions. In very hard soil, some extra weight is added which increases the draft.

The bearing conditions of the bearing housing will also affect the draft. Keep bearing in smooth conditions i.e. apply the grease whenever necessary.

Draft is also affected by the depth and width of cut per bottom for complete plough. Speed is also another factor which increases the draft, doubling the speed increases the draft by about 20 -25%.

### 3.6 ADJUSTMENTS FOR DEEPER PLOUGHING

The depth of the plough can be obtained by the position and draft control levers of the tractor hydraulic system. However more depth can be obtained by.

- Adding extra weight to the plough.
- Reducing the tilt angle. A correctly tilted disc plough tends to penetrate better.
- If the ground is covered with trash, set the disc in almost vertical position and add weight to the plough. In such soils notched disc gives better results.

## 4. MAINTENANCE

### 4.1 MAINTENANCE INSTRUCTIONS

If you work the disc plough on stony land then maintenance also increases. Please follow these rules to get the best results.

- If disc plough is new then after first two hours of working tighten all nut bolts.
- Check the plough adjustments if the steering is hard.
- Check the scrapper adjustments frequently.
- If the soil has entered in grease nipple, then change the nipple.
- After every fifty hours grease all greasing points with grease gun and tighten all nuts and bolts.
- After three hundred hours, open the hub of disc plough & cleanse it with diesel oil, pump in new grease & replace its seal.
- Constantly check for loose nuts and bolts.
- Sharpen the disc if the blades are dull. Blunt blades increase the draft considerably.
- When the diameter of disc is reduced to 24" it is desirable to change the degree of hub by loosening the mounting bolts.
- Discs cannot work beyond 22" diameter. They must be replaced for effective ploughing.

11. Keep the bearings lubricated as per the instructions given in the manual.
12. Coat the disc blades for rust prevention with the used oil in slack season.

#### 4.2 STORAGE OF MACHINE AFTER WORK

1. Wash the disc plough after work
2. Replace the worn out nuts and bolts.
3. If disc plough has to remain unused for long time then clean it & apply a layer of used oil for rust prevention.

These steps will enhance the life of your disc plough.

#### 4.3 LUBRICATION

Please take care that high quality grease is used in bearing housings, coulter hub & bushes.

#### 4.4 INSTRUCTION FOR DRIVER

1. When disc plough is ready for use don't stand between disc plough & the tractor.
2. Properly fit the three point linkage as mentioned above & lock with lynch pin.
3. In case of scrapper touching the discs, loosen the scrapper bolt and readjust the scrapper.
4. Never turn the tractor to the right or left when the plough is engaged in the soil.
5. Never reverse the tractor when the plough is engaged in the soil.

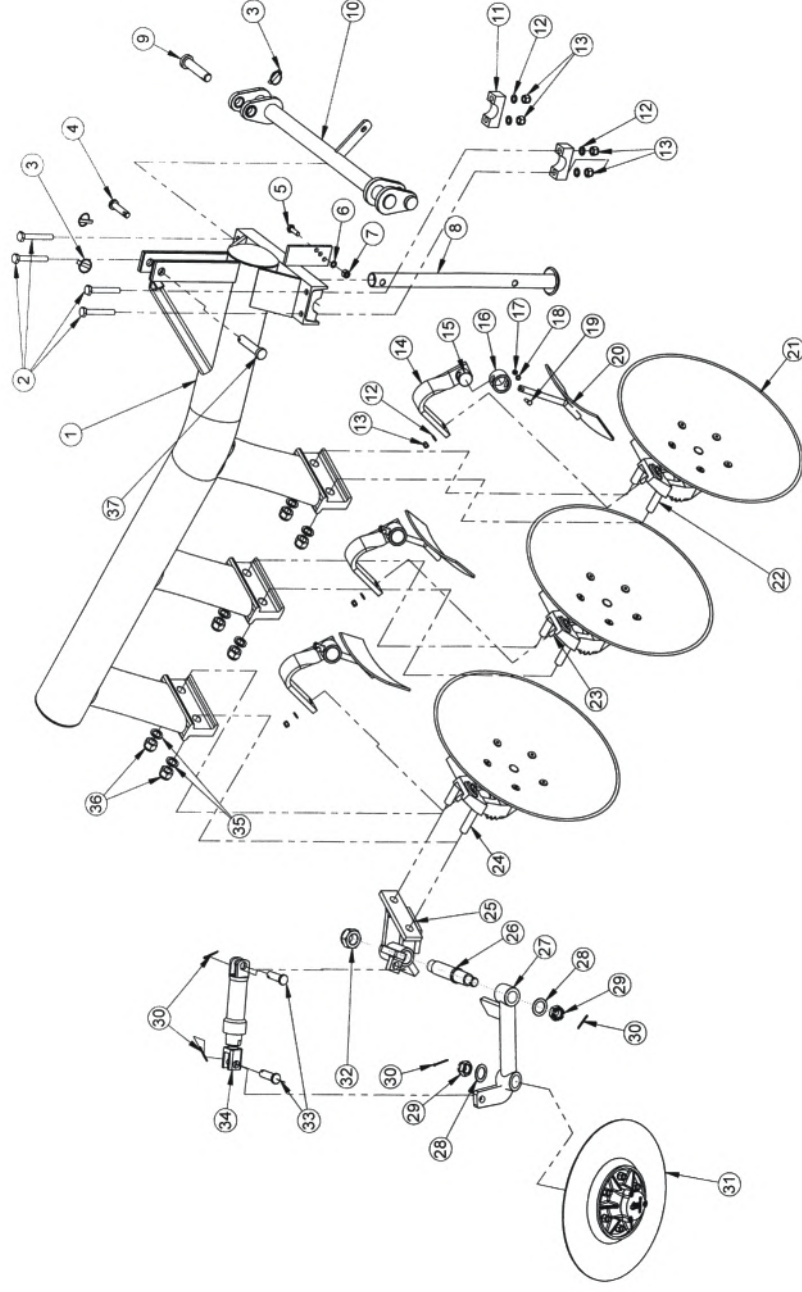
#### 5. TROUBLE SHOOTING

| TROUBLE SHOOTING |                      |  |   |
|------------------|----------------------|--|---|
| SR. NO.          | DEFECT               | REASON   | REMEDY  |
| 1                | LOW PENETRATION      | - BLUNT DISC<br>- MORE TILT ANGLE                | - SHARPEN THE EDGE<br>- SET THE TILT ANGLE    |
| 2                | HEAVY DRAFT          | - BLUNT DISC<br>- FURROW TOO WIDE                | - SHARPEN THE EDGE<br>- REDUCE THE TILT ANGLE |
| 3                | EXCESSIVE SIDE DRAFT | - IMPROPER HITCHING                              | - HITCH PROPERLY                              |
| 4                | LESS SCOURING        | - DEFECTIVE SCRAPER<br>- LOOSE BEARING           | - ADJUST THE SCRAPER<br>- SET THE BEARING     |
| 5                | UNEVEN FURROW        | - DISC ANGLE NOT UNIFORM<br>- HITCHING DEFECTIVE | - SET THE DISC ANGLE<br>- SET THE HITCHING    |



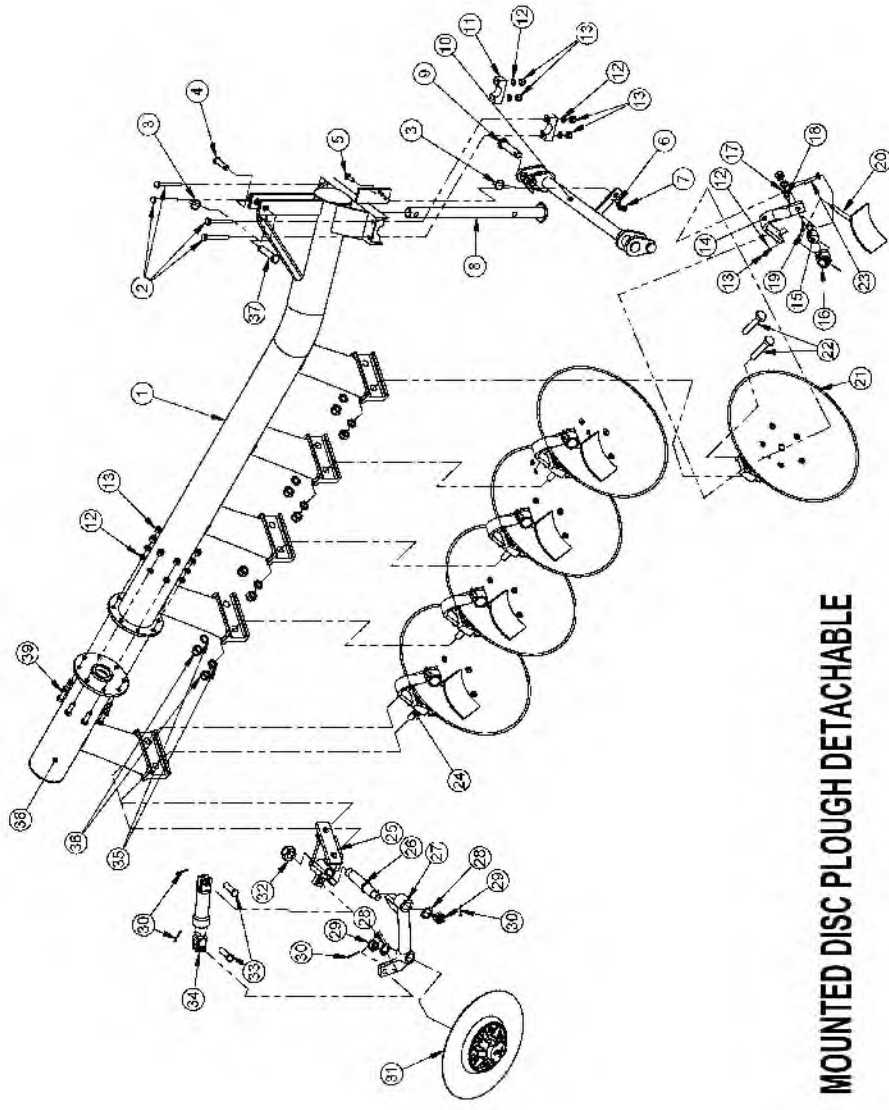
**Dear user!**  
**Respect the Ecology.**  
**Do not throw the trash away.**  
**This gesture helps to protect our Environment.**





## MOUNTED DISC PLOUGH

| SR.NO. | DESCRIPTION                    | MOUNTED DISC PLOUGH 2 TO 5 BOTTOM |           |           |           |  | QTY.     |          |          |          |   |   |   |   |  |
|--------|--------------------------------|-----------------------------------|-----------|-----------|-----------|--|----------|----------|----------|----------|---|---|---|---|--|
|        |                                | 2 BOTTOM                          | 3 BOTTOM  | 4 BOTTOM  | 5 BOTTOM  |  | 2 BOTTOM | 3 BOTTOM | 4 BOTTOM | 5 BOTTOM |   |   |   |   |  |
| 1      | FRAME ASS.                     | FKMDP-501                         | FKMDP-510 | FKMDP-511 | FKMDP-513 |  |          |          |          |          | 1 |   |   |   |  |
| 2      | HEX HEAD BOLT M16x120x2L       |                                   | 10260037  |           | 10260269  |  |          |          |          |          | 4 |   |   |   |  |
| 3      | HEX HEAD BOLT M16x140x2L       |                                   |           |           |           |  |          |          |          |          | 4 |   |   |   |  |
| 4      | LINCH PIN 10MM                 |                                   | 10020022  |           |           |  |          |          |          |          | 4 |   |   |   |  |
| 5      | PIN Ø19x90L                    |                                   | 10020026  |           |           |  |          |          |          |          | 4 |   |   |   |  |
| 6      | HEX HEAD BOLT M12x40x1.75P     |                                   | 10260008  |           | 10260064  |  |          |          |          |          | 1 |   |   |   |  |
| 7      | HEX HEAD BOLT M12x50x1.75P     |                                   |           |           |           |  |          |          |          |          |   |   |   |   |  |
| 8      | SPRING WASHER 12MM             |                                   | 10270003  |           |           |  |          |          |          |          |   |   |   |   |  |
| 9      | NYLOCK NUT M12                 |                                   | 10280025  |           |           |  |          |          |          |          |   |   |   |   |  |
| 10     | STAND ASS.                     |                                   | FKMDP-502 |           |           |  |          |          |          |          | 2 |   |   |   |  |
| 11     | HITCH PIN 28x125L              |                                   | 10020095  |           | 10020109  |  |          |          |          |          | 2 |   |   |   |  |
| 12     | PIN 36x125 (L)                 |                                   |           |           |           |  |          |          |          |          |   |   |   |   |  |
| 13     | LINK DRAW BAR ASS.             |                                   | FKMDP-503 |           | FKMDP-512 |  |          |          |          |          | 1 |   |   |   |  |
| 14     | LOWER U-BLOCK                  |                                   | FKMDP-012 |           | FKMDP-087 |  |          |          |          |          | 2 |   |   |   |  |
| 15     | SPRING WASHER 16MM             |                                   | 10270005  |           |           |  |          |          |          |          |   |   |   |   |  |
| 16     | NYLOCK NUT M16x1.75P           |                                   | 10280005  |           |           |  |          |          |          |          | 6 | 7 | 8 | 9 |  |
| 17     | SCRAPER HOLDING FLAT           |                                   | FKMDP-051 |           |           |  |          |          |          |          |   |   |   |   |  |
| 18     | SCRAPER BOLT WITH NUT & WASHER |                                   | FKMDP-050 |           |           |  |          |          |          |          |   |   |   |   |  |
| 19     | SCRAPER BUSH                   |                                   | FKMDP-049 |           |           |  |          |          |          |          |   |   |   |   |  |
| 20     | NYLOCK NUT M8x1.25P            |                                   | 10280027  |           |           |  |          |          |          |          |   |   |   |   |  |
| 21     | SPRING WASHER 8MM              |                                   | 10270001  |           |           |  |          |          |          |          |   |   |   |   |  |
| 22     | HEX HEAD BOLT M8x40x1.25P      |                                   | 10260002  |           |           |  |          |          |          |          |   |   |   |   |  |
| 23     | SCRAPER WITH SCRAPER ROD ASS.  |                                   | FKMDP-509 |           |           |  |          |          |          |          |   |   |   |   |  |
| 24     | SPINDLE ASS.                   |                                   | FKMDP-504 |           |           |  |          |          |          |          |   |   |   |   |  |
| 25     | HEX HEAD BOLT M24x110x3P       |                                   | 10260042  |           |           |  |          |          |          |          | 2 | 3 | 4 | 5 |  |
| 26     | HEX HEAD BOLT M16x65x1.75P     |                                   | 10260017  |           |           |  |          |          |          |          | 2 | 4 | 6 | 8 |  |
| 27     | HEX HEAD BOLT M24x130x3P       |                                   | 10260041  |           |           |  |          |          |          |          | 2 | 3 | 4 | 6 |  |
| 28     | SHOCKER BUSH ASS.              |                                   | FKMDP-505 |           |           |  |          |          |          |          |   |   |   |   |  |
| 29     | SHOCKER ROD                    |                                   | FKMDP-032 |           |           |  |          |          |          |          |   |   |   |   |  |
| 30     | TAPER BUSH ROD ASS.            |                                   | FKMDP-506 |           |           |  |          |          |          |          |   |   |   |   |  |
| 31     | PLAIN WASHER 28MM              |                                   | 10270015  |           |           |  |          |          |          |          |   |   |   |   |  |
| 32     | CASTEL NUT 28x12G              |                                   | 10280015  |           |           |  |          |          |          |          |   |   |   |   |  |
| 33     | SPLIT PIN 4x45L                |                                   | 10020054  |           |           |  |          |          |          |          |   |   |   |   |  |
| 34     | COLTER HUB ASS.                |                                   | FKMDP-507 |           |           |  |          |          |          |          |   |   |   |   |  |
| 35     | NYLOCK NUT M36x2P              |                                   | 10280040  |           |           |  |          |          |          |          |   |   |   |   |  |
| 36     | SHOCKER PIN Ø22x76L            |                                   | 10020025  |           |           |  |          |          |          |          |   |   |   |   |  |
| 37     | SHOCKER ASS.                   |                                   | FKMDP-508 |           |           |  |          |          |          |          |   |   |   |   |  |
| 38     | SPRING WASHER 24MM             |                                   | 102700027 |           |           |  |          |          |          |          |   |   |   |   |  |
| 39     | PLAIN NUT M24x3P               |                                   | 10260044  |           |           |  |          |          |          |          |   |   |   |   |  |
| 40     | PIN 25x120L                    |                                   | 10020035  |           |           |  |          |          |          |          |   |   |   |   |  |
| 41     | PIN 32x120L                    |                                   |           |           | 10020108  |  |          |          |          |          |   |   |   |   |  |

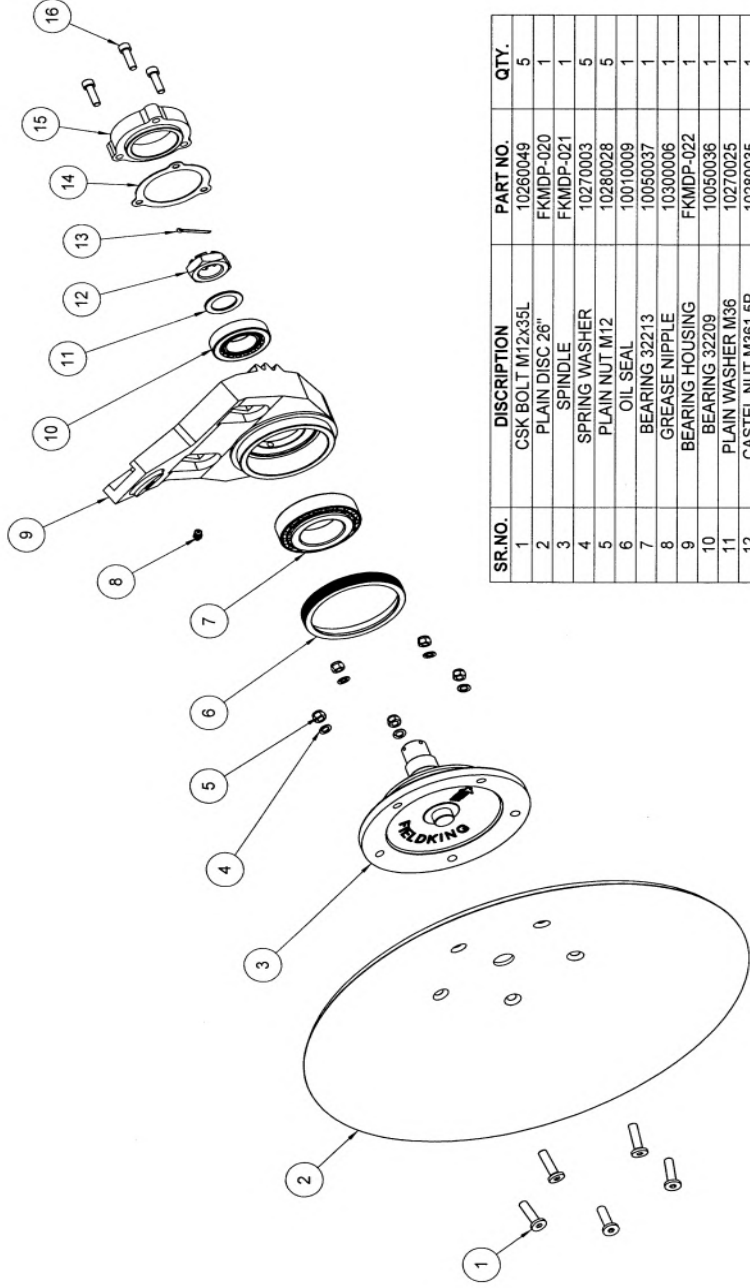


**MOUNTED DISC PLOUGH DETACHABLE**

**MOUNTED DISC PLOUGH DETACHABLE**

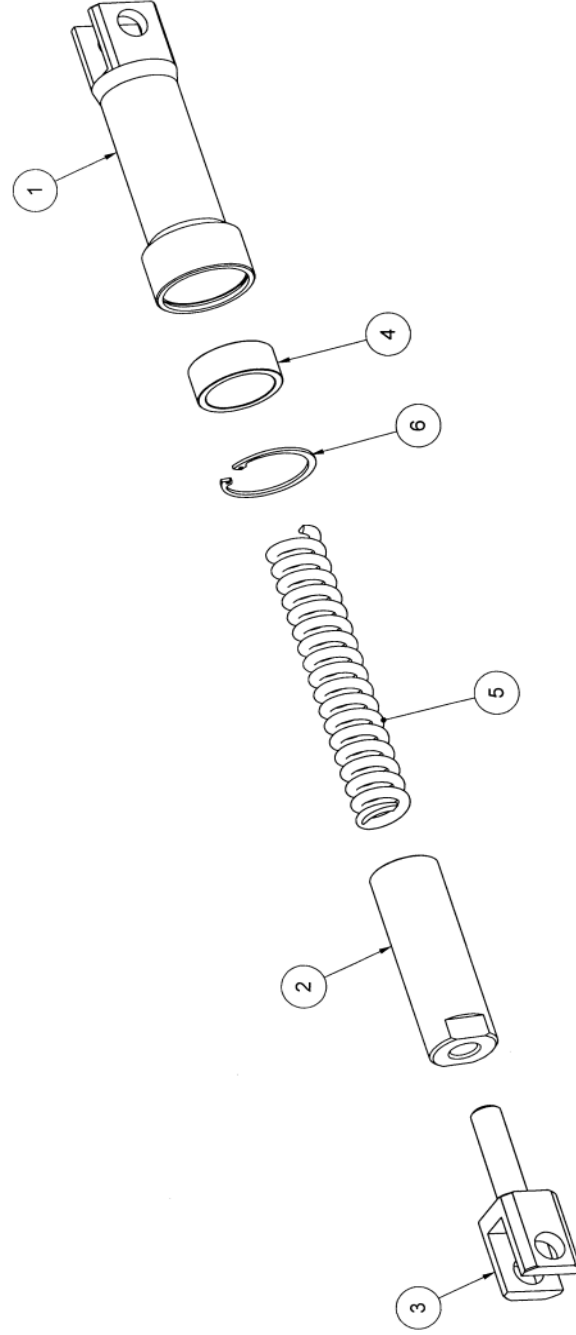
| SR.NO. | DESCRIPTION                    | PART NO.   |            |            | QTY.       |
|--------|--------------------------------|------------|------------|------------|------------|
|        |                                | 3+H BOTTOM | 4+H BOTTOM | 3+H BOTTOM |            |
| 1      | MAIN FRAME ASS.                | FKMDP-518  | FKMDP-520  | 1          | 4+H BOTTOM |
| 2      | HEX HEAD BOLT M18x120x2L       | 10260037   |            | 1          |            |
| 3      | LINCH PIN 10MM                 | 10020032   |            | 4          |            |
| 4      | PIN Ø719x90L                   | 10020026   |            | 4          |            |
| 5      | HEX HEAD BOLT M12x40x1.75P     | 10260008   |            |            |            |
| 6      | SPRING WASHER 17MM             | 10270003   |            | 1          |            |
| 7      | NYLOCK NUT M17                 | 10280025   |            |            |            |
| 8      | STAND ASS.                     | FKMDP-502  |            |            |            |
| 9      | HITCH PIN 26X125L              | 10020035   |            | 2          |            |
| 10     | LINK DRAWBAR ASS.              | FKMDP-503  |            | 1          |            |
| 11     | LOWER U BLOCK                  | FKMDP-912  |            | 2          |            |
| 12     | SPRING WASHER 16MM             | 10270005   |            | 16         | 17         |
| 13     | NYLOCK NUT M16x2P              | 10280005   |            |            |            |
| 14     | SCRAPER HOI DING PLAT          | FKMDP-051  |            |            |            |
| 15     | SCRAPER BOLT WITH NUT & WASHER | FKMDP-050  |            |            |            |
| 18     | SCRAPER BUSH                   | FKMDP-049  |            |            |            |
| 17     | NYLOCK NUT M8x1.25P            | 10280027   |            |            |            |
| 18     | SPRING WASHER 8MM              | 10270001   |            | 4          | 5          |
| 19     | HEX HEAD BOLT M8x40x1.25P      | 10260002   |            |            |            |
| 20     | SCRAPER WITH SCRAPER ROD ASS.  | FKMDP-509  |            |            |            |
| 21     | SPINDLE ASS                    | FKMDP-504  |            | 6          | 8          |
| 22     | HIX HEAD BOLT M24x110x3P       | 10280042   |            | 4          | 8          |
| 23     | HEX HEAD BOLT M16x65x2P        | 10260017   |            |            |            |
| 24     | HEX HEAD BOLT M24x130x3P       | 10260041   |            | 2          |            |
| 25     | SHOCKER BUSH ASS.              | FKMDP-505  |            | 1          |            |
| 26     | SHOCKER ROD                    | FKMDP-032  |            |            |            |
| 27     | TAPER BUSH ROD ASS.            | FKMDP-506  |            |            |            |
| 28     | PLAIN WASHER 28MM              | 10270015   |            | 2          |            |
| 29     | CASTEL NUT 28x12G              | 10280015   |            | 4          |            |
| 30     | SPLIT PIN 4x45L                | 10030054   |            |            |            |
| 31     | COLTER HUB ASS.                | FKMDP-507  |            | 1          |            |
| 32     | NYLOCK NUT M36x2P              | 10280040   |            | 2          |            |
| 33     | SHOCKER PIN Ø22x76L            | 10020025   |            |            |            |
| 34     | SHOCKER ASS.                   | FKMDP-508  |            | 1          |            |
| 35     | SPRING WASHER 24MM             | 102700027  |            | 8          | 10         |
| 36     | PLAIN NUT M24x3P               | 10280044   |            |            |            |
| 37     | PIN 25x120L                    | 10020035   |            | 1          |            |
| 38     | REAR FRAME PIPE ASSY.          | FKMDF-519  |            | 1          |            |
| 39     | HEX HEAD BOLT M16x60x2P        | 10280078   |            | 8          |            |

## SPINDLE ASSEMBLY



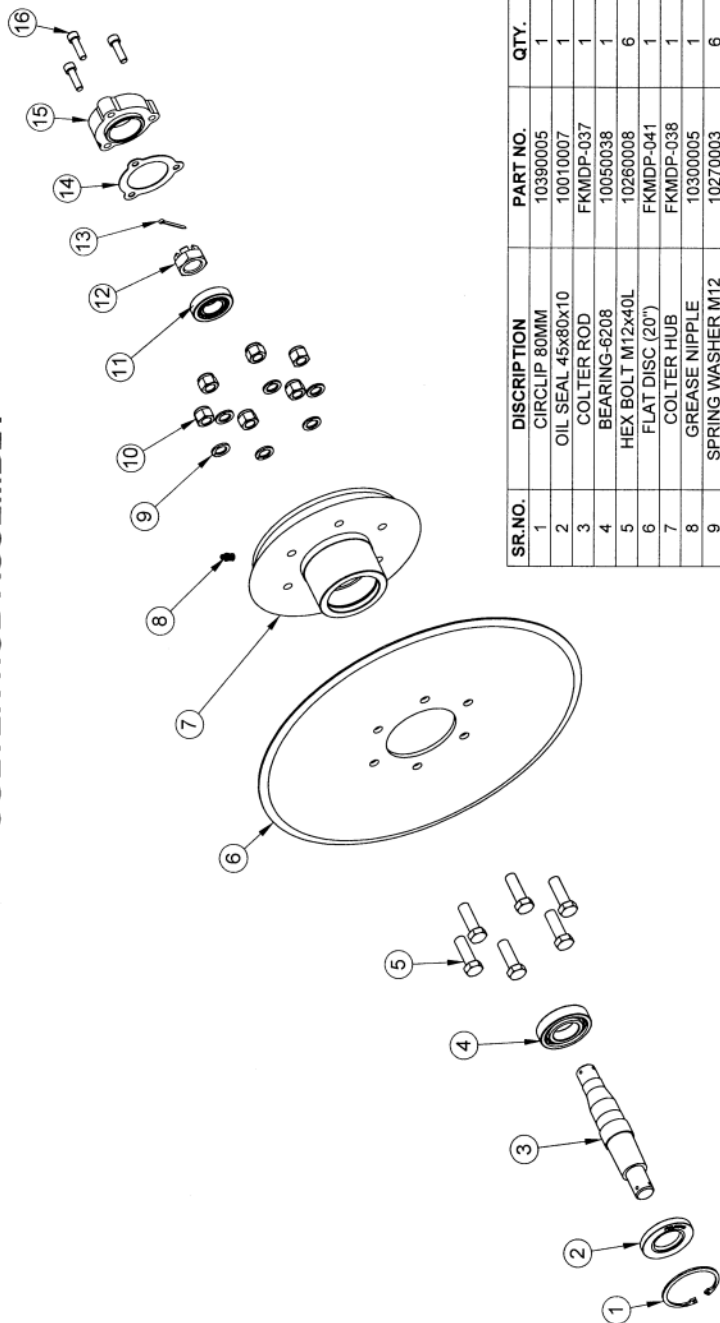
| SR.NO. | DESCRIPTION         | PART NO.  | QTY. |
|--------|---------------------|-----------|------|
| 1      | CSK BOLT M12x35L    | 10260049  | 5    |
| 2      | PLAIN DISC 26"      | FKMDP-020 | 1    |
| 3      | SPINDLE             | FKMDP-021 | 1    |
| 4      | SPRING WASHER       | 10270003  | 5    |
| 5      | PLAIN NUT M12       | 10280028  | 5    |
| 6      | OIL SEAL            | 10010009  | 1    |
| 7      | BEARING 32213       | 10050037  | 1    |
| 8      | GREASE NIPPLE       | 10300006  | 1    |
| 9      | BEARING HOUSING     | FKMDP-022 | 1    |
| 10     | BEARING 32209       | 10050036  | 1    |
| 11     | PLAIN WASHER M36    | 10270025  | 1    |
| 12     | CASTEL NUT M361.5P  | 10280035  | 1    |
| 13     | SPLIT PIN           | 10020055  | 1    |
| 14     | GSKET               | FKMDP-023 | 1    |
| 15     | BEARING HOUSING CAP | FKMDP-024 | 1    |
| 16     | ALLEN BOLT M10      | 10260095  | 3    |

## SHOCKER ASSEMBLY



| SR.NO. | DESCRIPTION             | PART NUMBER | QTY. |
|--------|-------------------------|-------------|------|
| 1      | SHOCKER OUTER PIPE      | FKMDP-042   | 1    |
| 2      | SHOCKER INNER PIPE      | FKMDP-043   | 1    |
| 3      | SHOCKER ADJUSTMENT BOLT | FKMDP-044   | 1    |
| 4      | SHOCKER BUSH            | FKMDP-045   | 1    |
| 5      | SHOCKER SPRING          | FKMDP-046   | 1    |
| 6      | CIRCLIP                 | 62MM        | 1    |

# COLTER HUB ASSEMBLY



| SR.NO. | DISCRPTION        | PART NO.  | QTY. |
|--------|-------------------|-----------|------|
| 1      | CIRCLIP 80MM      | 10390005  | 1    |
| 2      | OIL SEAL 45x80x10 | 10010007  | 1    |
| 3      | COLTER ROD        | FKMDP-037 | 1    |
| 4      | BEARING-6208      | 10050038  | 1    |
| 5      | HEX BOLT M12x40L  | 10260008  | 6    |
| 6      | FLAT DISC (20")   | FKMDP-041 | 1    |
| 7      | COLTER HUB        | FKMDP-038 | 1    |
| 8      | GREASE NIPPLE     | 10300005  | 1    |
| 9      | SPRING WASHER M12 | 10270003  | 6    |
| 10     | PLAIN NUT M12     | 10280028  | 6    |
| 11     | BEARING-30206     | 10050011  | 1    |
| 12     | CASTEL NUT M28    | 10280015  | 1    |
| 13     | SPLIT PIN         | 10020054  | 1    |
| 14     | COLTER HUB GESKET | FKMDP-039 | 1    |
| 15     | COLTER HUB CAP    | FKMDP-040 | 1    |
| 16     | ALLEN BOLT M10    | 10260095  | 3    |

## DELIVERY CHECKLIST

### Dealer Pre-Delivery (Please Tick)

#### 1. Dealer Pre-Delivery Checklist

1. The customer or person responsible has been given the operator's manual.
2. The customer undertakes to read the complete operator's manual and understands all aspects of the manual before operation of the machine.
3. All safety, operational and maintenance information have been explained and demonstrated.
4. All greasing and oil points, stickers, guarding and ID plate have been identified and physically pointed out.
5. The customer agrees that it is his responsibility to read and carry out the safety, maintenance and operation as per this operator's manual.

### Customer Delivery (Please Tick)

#### 2. Customer Delivery Checklist

1. The customer or person responsible has been given the operator's manual.
2. The customer undertakes to read the complete operator's manual and understands all aspects of the manual before operation of the machine.
3. All safety, operational and maintenance information have been explained and demonstrated.
4. All greasing and oil points, stickers, guarding and ID plate have been identified and physically pointed out.
5. The customer agrees that it is his responsibility to read and carry out the safety, maintenance and operation as per this operator's manual.

### Please Complete all Dealer information Below

#### Dealer Information

Dealer's Name.....  
 Address.....  
 State..... Postcode.....  
 Phone..... Fax.....  
 Email.....  
 Service Person.....  
 I confirm that the pre-delivery service was performed on this machine.  
 Signature.....  
 Date.....  
 Comments.....

### Please Complete all Customer Information Below

#### Customer Information

Customer's Name.....  
 Address.....  
 State..... Postcode.....  
 Phone..... Fax.....  
 Email.....  
 Delivery Person.....  
 I confirm that all of the delivery checks were explained and performed.  
 Signature.....  
 Delivery Date.....  
 Comments.....



**WARRANTY CARD**  
**Customer Copy**

CUSTOMER NAME Mr./ Mrs :

ADDRESS :

MOBILE NO. :

Email :

NAME OF IMPLEMENT :

MODEL NO. :

YEAR OF Mfg. :

SERIAL NO. :

REGISTRATION NO. :

DATE OF PURCHASING :

NAME OF DEALER :

Customer's Signature

Dealer's Signature



**BERI UDYOG PVT LTD**

Corporate Office:

Plot No. 235 to 240, Sec-3, HSIIDC, Karnal- 132001 (Haryana), India

+91 184 2221571/ 72/ 73

info@fieldking.com, www.fieldking.com



**WARRANTY CARD**  
Company Copy

CUSTOMER NAME Mr./ Mrs :

ADDRESS :

MOBILE NO. :

Email :

NAME OF IMPLEMENT :

MODEL NO. :

YEAR OF Mfg. :

SERIAL NO. :

REGISTRATION NO. :

DATE OF PURCHASING :

NAME OF DEALER :

Customer's Signature

Dealer's Signature



**BERI UDYOG PVT LTD**

Corporate Office:

Plot No. 235 to 240, Sec-3, HSIIDC, Karnal- 132001 (Haryana), India

+91 184 2221571/ 72/ 73

info@fieldking.com, www.fieldking.com



**WARRANTY CARD**  
**Dealer Copy**

CUSTOMER NAME Mr./ Mrs :

ADDRESS :

MOBILE NO. :

Email :

NAME OF IMPLEMENT :

MODEL NO. :

YEAR OF Mfg. :

SERIAL NO. :

REGISTRATION NO. :

DATE OF PURCHASING :

NAME OF DEALER :

Customer's Signature

Dealer's Signature



**BERI UDYOG PVT LTD**

Corporate Office:

Plot No. 235 to 240, Sec-3, HSIIDC, Karnal- 132001 (Haryana), India

+91 184 2221571/ 72/ 73

info@fieldking.com, www.fieldking.com