

1.3.2 Hi-Flo Nozzle Assembly, Single (UK Models)

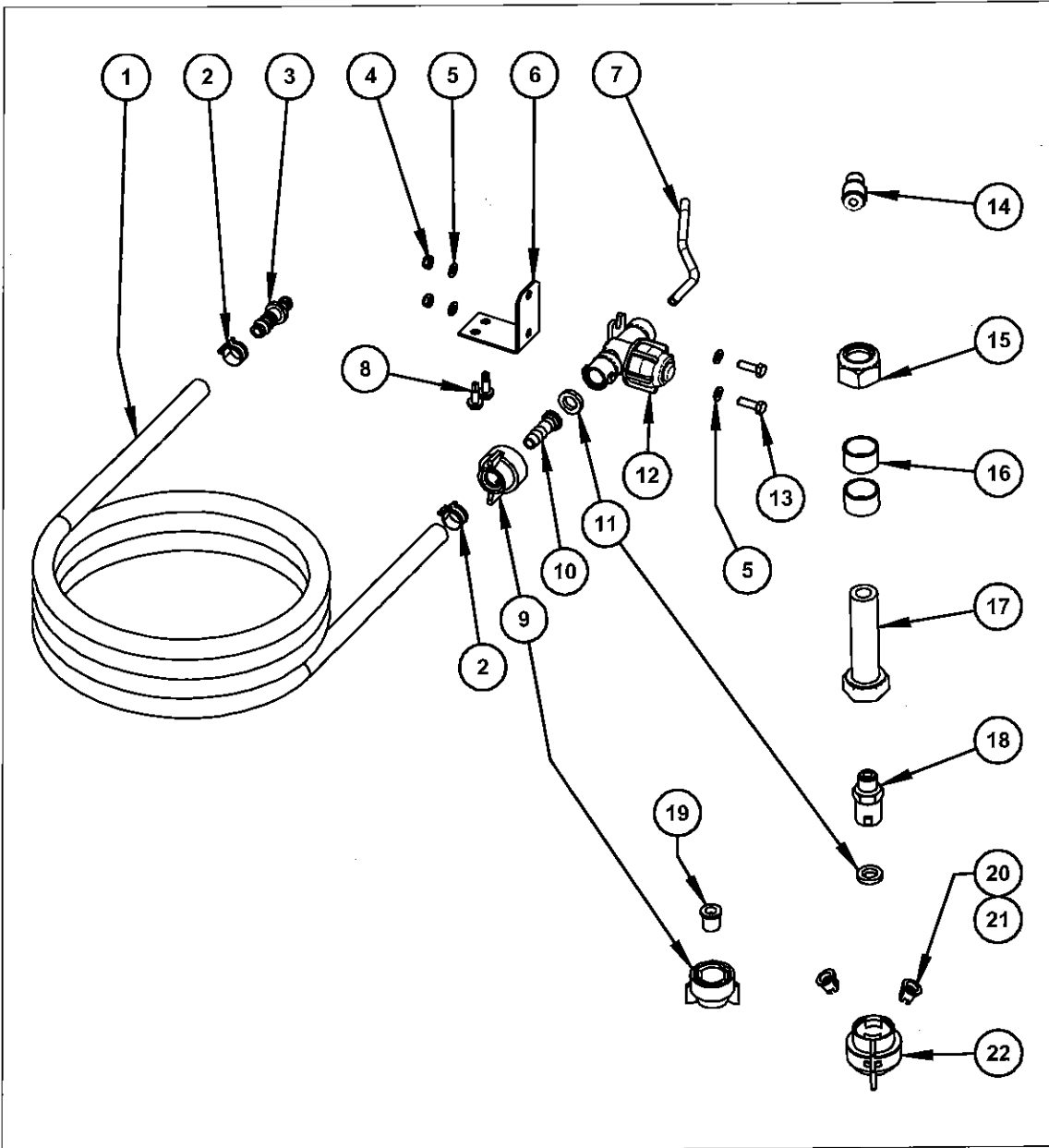


Figure 11 - Hi-Flo Nozzle Assembly, Single (UK Models)

Hi-Flo Nozzle Assembly, Single (UK Models)

ITEM	PART NO.	DESCRIPTION	QTY.
1	8114	HOSE, 3/8", REINFORCED, BLACK	4.5 m
2	NH005	CLIP, 14mm COBRA	2
3	AL032	HOSE CONNECTOR, PLUG, 10mm	1
4	5112	NUT M5 NYLOC	2
5	5997	WASHER, M5, FLAT, S/S, A2, FORM B	4
6	10522	BRACKET NOZZLE BODY	1
7	6740	TUBE 6MM X 4MM	0.15 m
8	UF014	TEK-SCREW, 10x16x16, HEX HEAD, ZP	2
9	8139	NOZZLE CAP	2 ¹
10	5332	HOSE BARB	1
11	8140	SEAL	2
12	10515	NOZZLE BODY 1/4" PTC X BAYONET	1
13	4915	SCREW M5 x 16	2
14	10516	ADAPTER, G 1/4 MALE, PUSH IN 6 mm 90° SWIVEL	1 JF001
15	UF031	NUT M20	1
16	ZD001	SPACER	2
17	UF025S	BOLT M20 X 75 SS304	1
18	10505	ADAPTOR 1/4" BSP X QUICK ATTACH	1
19	8075	NOZZLE, FCX3, FULL CONE	1 ²
20	8713	NOZZLE VP110-015 - 110°	2 ³
21	10503	NOZZLE VP8002 - 80°	2 ³
22	10504	TWIN CAP	1 ³

¹ Quantity 2 for Spraydome and Undavina models smaller than 400 mm diameter, Quantity 1 for Spraydome and Undavina models 400 mm to 600 mm diameter

²For use with Spraydome and Undavina models smaller than 400 mm diameter

³ For use with Spraydome and Undavina models from 400 mm to 600 mm diameter