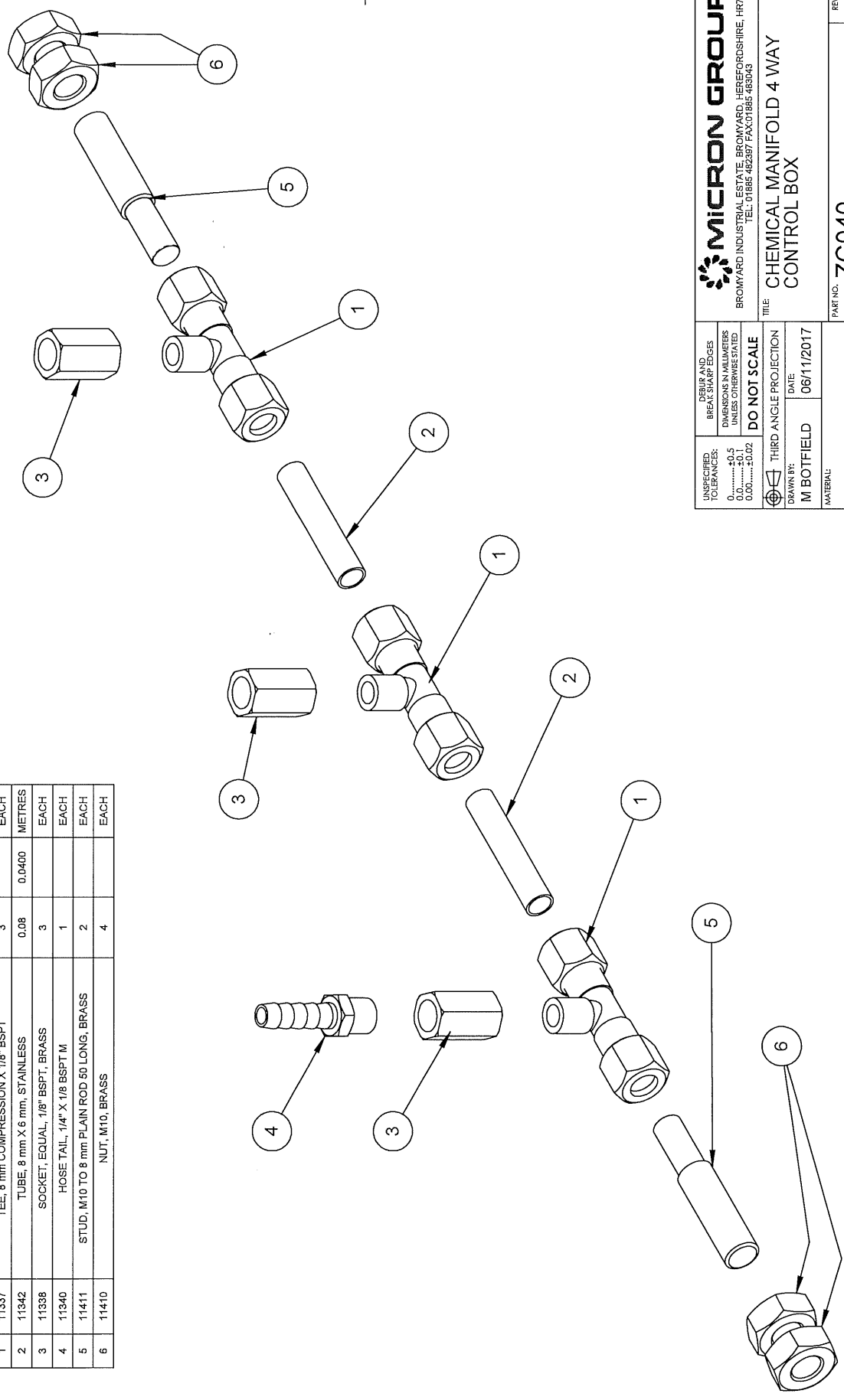


1	2	3	4	5	6	7	8
A		B		C		D	

ITEM	PART No.	DESCRIPTION	QTY.	SIZE	UNITS
1	11337	TEE, 8 mm COMPRESSION X 1/8" BSPT	3		EACH
2	11342	TUBE, 8 mm X 6 mm, STAINLESS	0.08	0.0400	METRES
3	11338	SOCKET, EQUAL, 1/8" BSPT, BRASS	3		EACH
4	11340	HOSE TAIL, 1/4" X 1/8 BSPT M	1		EACH
5	11411	STUD, M10 TO 8 mm PLAIN ROD 50 LONG, BRASS	2		EACH
6	11410	NUT, M10, BRASS	4		EACH



ZONE	REV.	DESCRIPTION	DATE	AMENDED BY	CHECKED BY

**MICRON GROUP**  
 BROMYARD INDUSTRIAL ESTATE, BROMYARD, HEREFORDSHIRE, HR7 4HS  
 TEL: 01885 482387 FAX: 01885 483043

**CHEMICAL MANIFOLD 4 WAY**  
**CONTROL BOX**

**DO NOT SCALE**

DEBUR AND BREAK SHARP EDGES DIMENSIONS IN MILLIMETERS UNLESS OTHERWISE STATED

THIRD ANGLE PROJECTION

DATE: 06/11/2017

DRAWN BY: M BOTFIELD

MATERIAL:

FINISH:

SCALE: 1:1

SIZE: A3

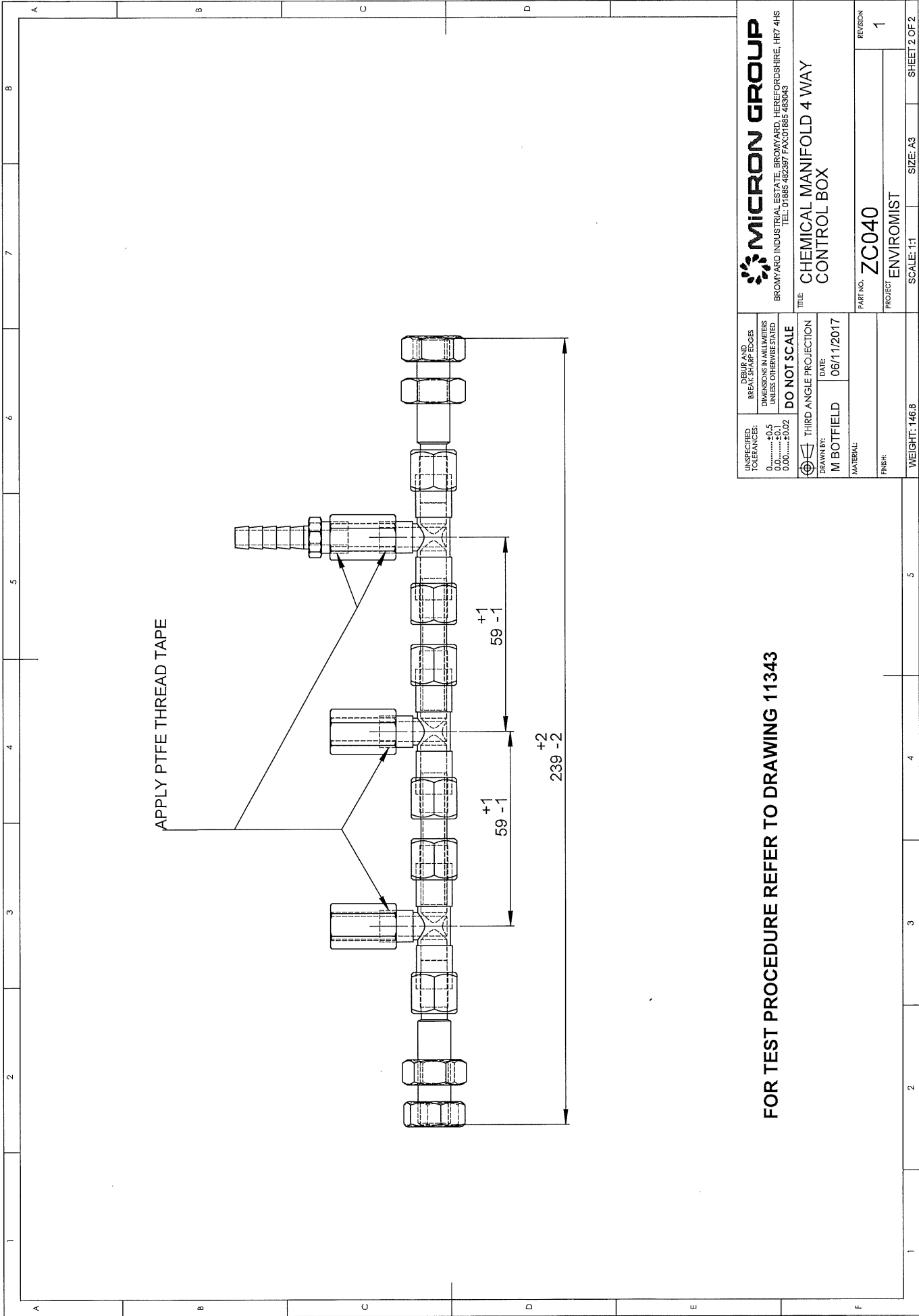
WEIGHT: 146.8

SHEET 1 OF 2

REVISION 1

PART NO. ZC040

PROJECT: ENVIROMIST



**MICRON GROUP**  
 BROMYARD INDUSTRIAL ESTATE, BROMYARD, HEREFORDSHIRE, HR7 4HS  
 TEL: 01865 482387 FAX: 01865 483043

UNSPECIFIED TOLERANCES:  
 0.0000.....+0.5  
 0.0000.....+0.1  
 0.0000.....+0.02

DEBUR AND BREAK SHARP EDGES  
 DIMENSIONS IN MILLIMETERS  
 UNLESS OTHERWISE STATED  
**DO NOT SCALE**

THIRD ANGLE PROJECTION  
 DRAWN BY: M BOTFIELD  
 DATE: 06/11/2017

MATERIAL:  
 FINISH:

WEIGHT: 146.8

SCALE: 1:1

SIZE: A3  
 SHEET 2 OF 2

TITLE: **CHEMICAL MANIFOLD 4 WAY CONTROL BOX**

PART NO. **ZC040**

PROJECT: **ENVIROMIST**

REVISION **1**

**FOR TEST PROCEDURE REFER TO DRAWING 11343**