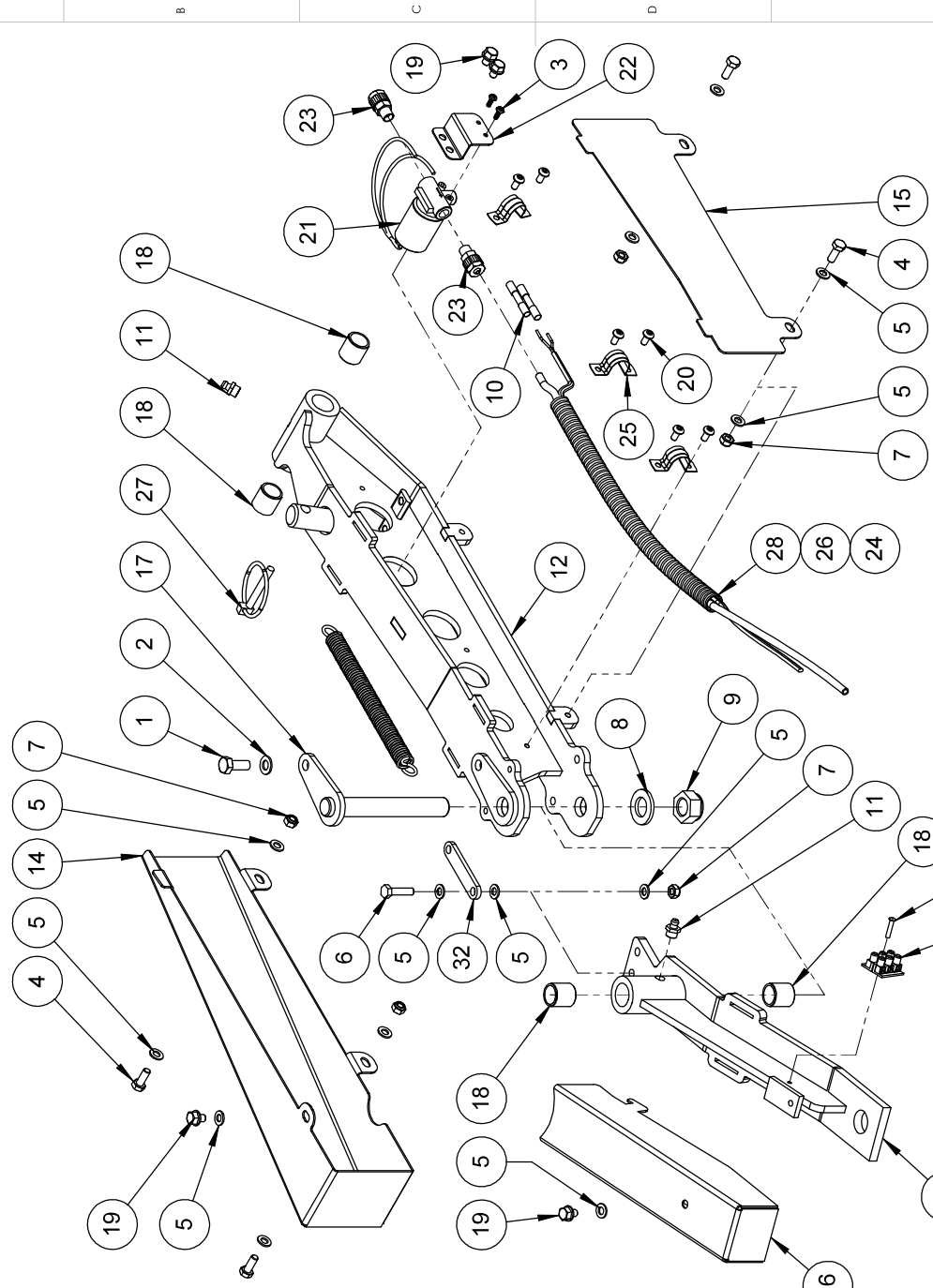


ZONE		REV.	DESCRIPTION	DATE	AMENDED BY	CHECKED BY



ITEM	PART NO.	DESCRIPTION	QTY.	SIZE	UNITS
1	4217	Screw M6 x 20	1		EACH
2	5160	Washer M6 Flat	1		EACH
3	5399	SCREW: S17 Ng.6x3/8" FZ PAN HD. B	2		EACH
4	5472	SCREW M6 x 16 SET. HEX	4		EACH
5	5722	WASHER M6	13		EACH
6	5971	SCREW M6 x 25 HEX	1		EACH
7	5984	NUT. M6 NYLOC	5		EACH
8	5994	WASHER (FORM 'A'), M16 FLAT. SIS	1		EACH
9	5995	NUT. M16 NYLOC. A4 SIS	1		EACH
10	7138	CRIMP. SPLICE. 1.5-2.5mm. HEAT SHRINKABLE	2		EACH
11	7699	GREASE NIPLLE - 1/8" BSP - STRAIGHT	2		EACH
12	9069	CHASSIS ARM	1		EACH
13	9070	PIVOT ARM	1		EACH
14	9071	CHASSIS ARM LH FRONT GUARD	1		SQ.MTRS
15	9072	CHASSIS ARM REAR GUARD	1		SQ.MTRS
16	9073	PIVOT ARM GUARD	1		EACH
17	9074_00	PIVOT ARM GUARD (MAT'L C35)	1		EACH
18	9083	Ø 16 THREADED SHAFT (MAT'L C35)	1	0.50	METRES
19	9106	SELF LUBRICATING BEARING - ID16 x OD20 x 20LG	4	.050	METRES
20	9232	HEX HEAD FLANGE SCREW (DIN 6921). M6x10. & 8. ZN P.L.T	4		EACH
21	11414	M5 x 10	6		EACH
22	11753	VALVE. SOLENOID. 12VDC. NC WITHOUT BYPASS	1		EACH
23	11753	SOLENOID BRKT (BREAKAWAY)	1		EACH
24	1A014	ADAPTER. 1/8 BSP x 6 mm	2		EACH
25	BD02	6 mm Micro Hose	1	0.50	METRES
26	GE001	SADDLE CLAMP 16 mm	3		EACH
27	GE012	Twin Cable Red/Black	1	.050	METRES
28	GS014	LINCHPIN 1/4" (6mm)	1		EACH
29	GE037	16mm Black Conduit	1	0.25	METRES
30	IE005	TENSION SPRING. 2.5mm. ZINC PLATED	1		EACH
31	UF046	POP RIVET. 73AS 4-8	1		EACH
32	ZE008	CONNECTOR. 3 WAY	1		EACH
33	ZU005	Pivot Connector II	1		EACH

MICRON GROUP
 BROMYARD INDUSTRIAL ESTATE, BROMYARD, HEREFORDSHIRE, HR7 4HS
 TEL: 01885 482397 FAX: 01885 483043

TITLE: **BREAKAWAY ASSEMBLY LH, ORCHARD SPECIAL**

UNSPECIFIED TOLERANCES:
 0.0.....±0.5
 0.00.....±0.02

DEBUR AND BREAK SHARP EDGES DIMENSIONS IN MILLIMETERS UNLESS OTHERWISE STATED
DO NOT SCALE

THIRD ANGLE PROJECTION

DRAWN BY: **M BOTFIELD** DATE: **01/11/2018**

MATERIAL: **11711**

FINISH: **ENVIROMIST**

WEIGHT: **5929.3**

SCALE: **1:4** SIZE: **A3** SHEET **1 OF 1**

PART NO. **11711** REVISION **1**
 PROJECT **ENVIROMIST**