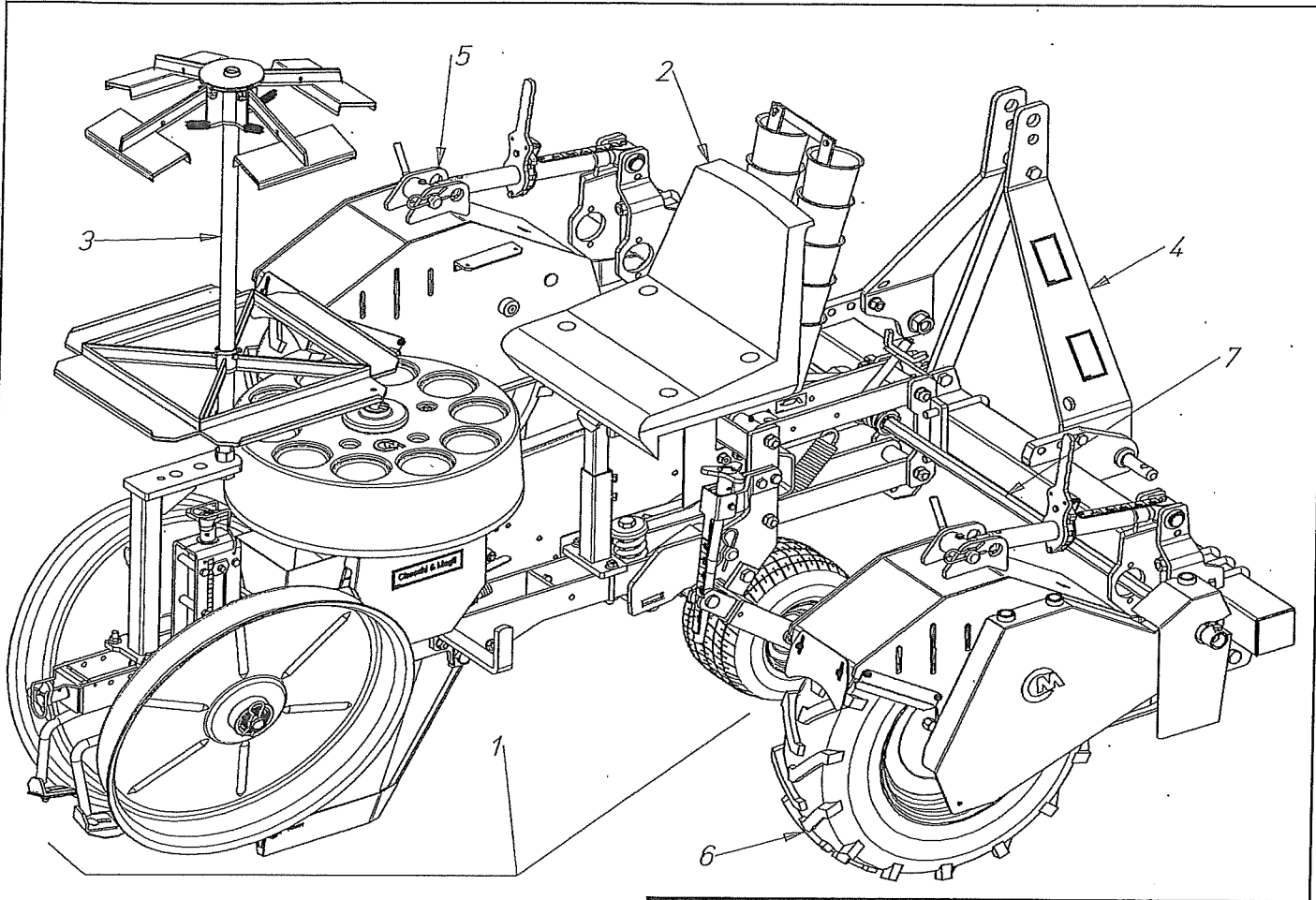


500445

500445 KIT PIEDE DI APPOGGIO TELAIO 2° CAT.

Pos.	Codice	Descrizione
1	420511	SUPPORTO PIEDE DI APPOGGIO
2	420512	PIEDE DI APPOGGIO STD
3	400814	SPINOTTO D.12x75
4	941201	COPIGLIA A MOLLA 3
5	400041	CAVALLOTTO "U" M14 (Q.80)
6	907108	RONDELLA PIANA 14 - R40
7	905008	DADO M-14 ALTO - 6S



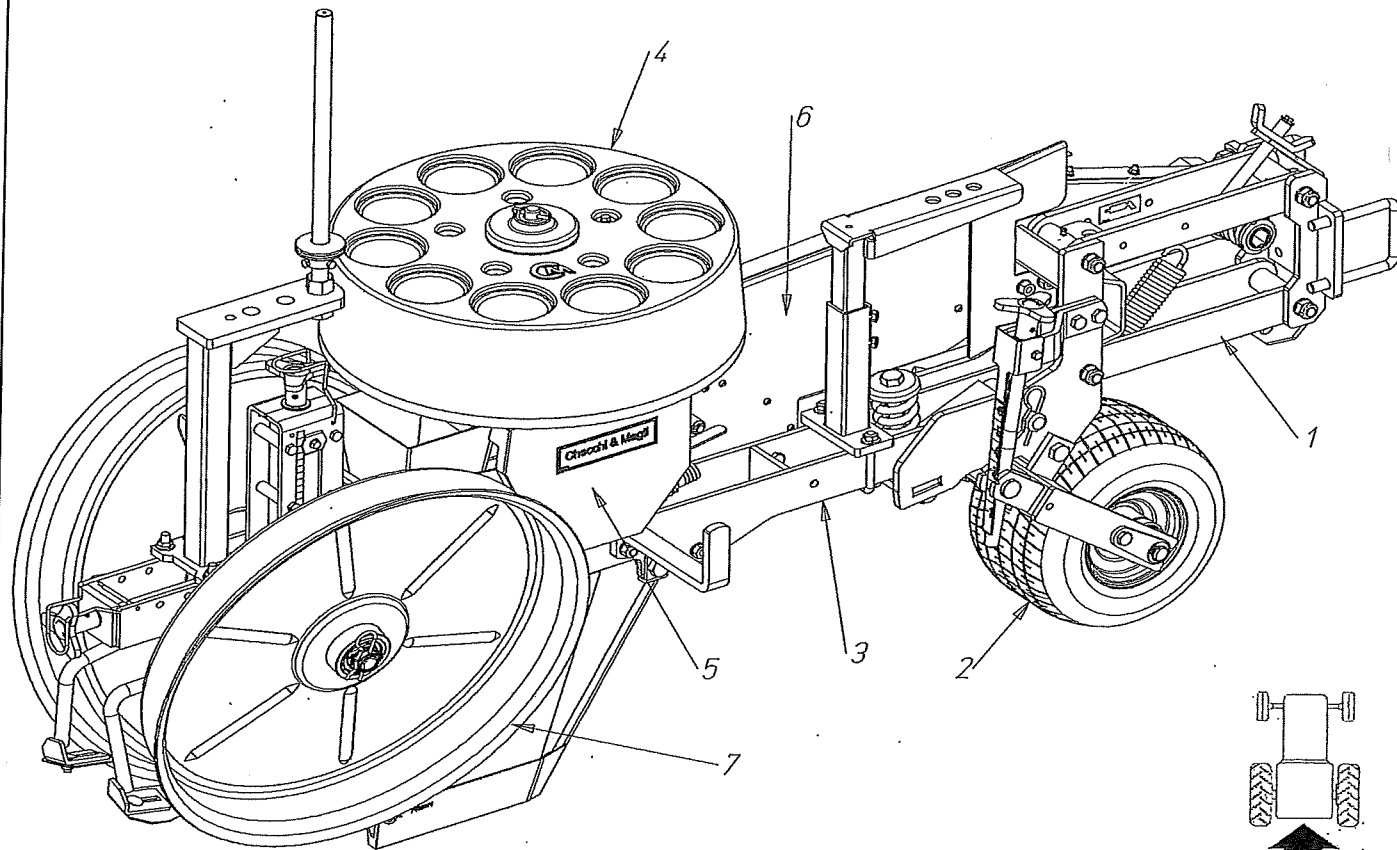
TRIUM TRANSPLANTER

80220001



Pos.	Code	Description	
1		TRIUM UNIT	page 2
2	SEE TAB.	REINFORCED SEAT WITH EXTENSIONS	page 15
2	SEE TAB.	REINFORCED SEAT WITH EXTENSION AND REDUCT.	page 16
3	500032	ROTARY TRAY HOLDER	page 17
4		STANDARD FRAME	page 18
4		REINFORCED FRAME	page 19
4		REINFORCED FRAME D.P.	page 20
5	500798	EXTRA-NARROW FORK NON DRIVING WHEEL	page 22
5	500714	EXTRA NARROW FORK DRIVING WHEEL LEFT	page 24
5	510122	NARROW FORK DRIV. WHEEL-LEFT RAPID S.14-50	page 29
5	510124	LARGE FORK DRIV. WHEEL-LEFT RAPID S.14-50	page 30
6	500713	EXTRA NARROW FORK DRIVING WHEEL RIGHT 14-50	page 24
6	510121	NARROW FORK DRIV. WHEEL-RIGHT RAPID S.14-50	page 29
6	510123	LARGE FORK DRIV. WHEEL-RIGHT RAPID S.14-50	page 30
7	400249	HEXAGONAL BAR 22 cm 150	
7	400250	HEXAGONAL BAR 22 cm 200	
7	400251	HEXAGONAL BAR 22 cm 250	
7	400252	HEXAGONAL BAR 22 cm 300	
7	400253	HEXAGONAL BAR 22 cm 350	
7	400254	HEXAGONAL BAR 22 cm 400	
7	400486	HEXAGONAL BAR 22 cm 450	

70220001

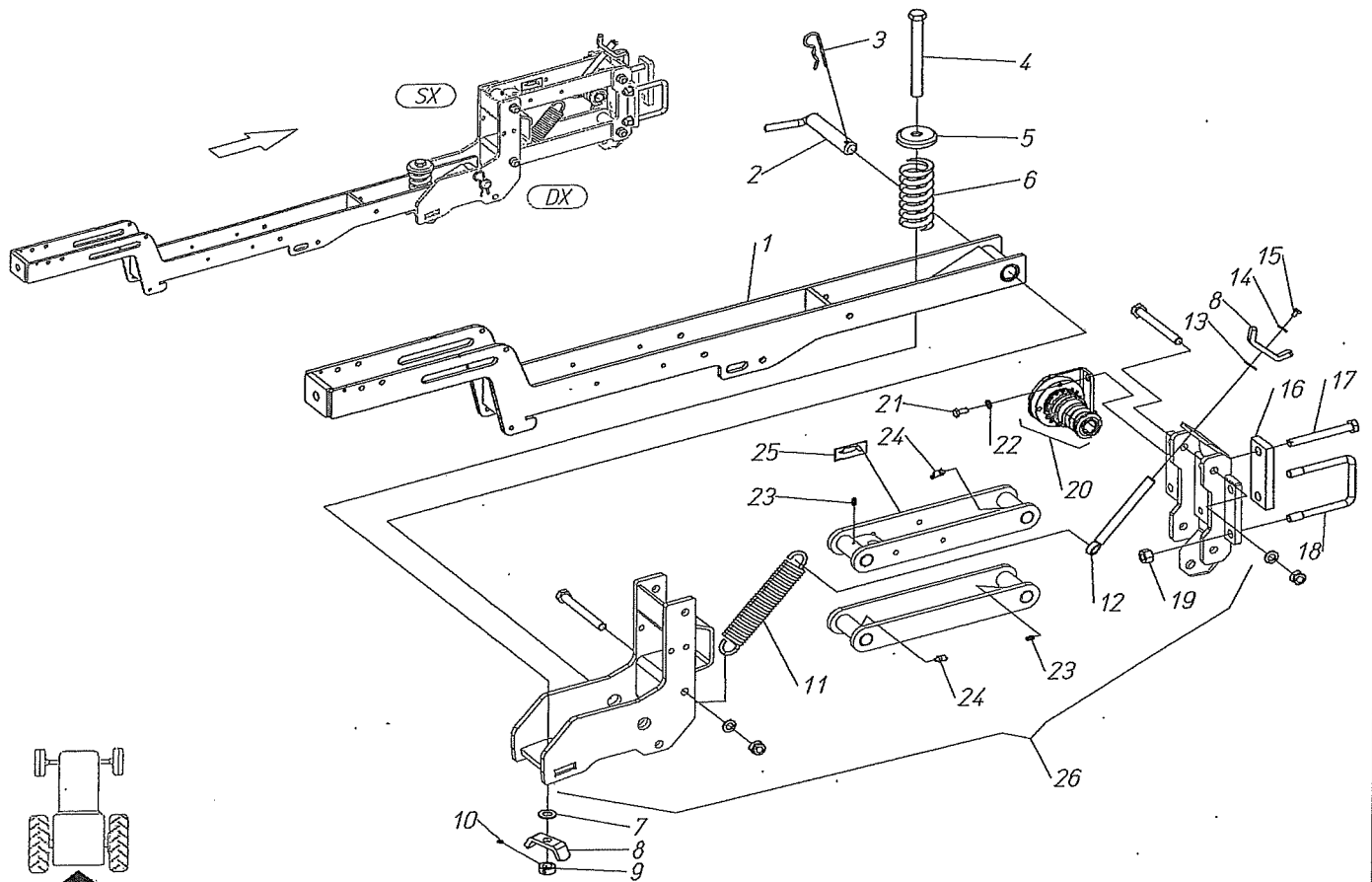


TRIUM UNIT



Pos.	Code	Description
1	SEE TAB.	DOUBLE JOINT PARALLELOGRAM TRIUM
2	SEE TAB.	FLOATATION WHEEL WITH ADJUSTMENT SCREW
3	SEE TAB.	TRIUM MAIN FRAME
4	SEE TAB.	TRIUM DISTRIBUTOR 10-12 CUPS
5	SEE TAB.	TRIUM REDUCER 10-12 CUPS
6	SEE TAB.	TRANSMISSION COVER AND CHAIN
7	SEE TAB.	PACKING WHEELS WITH EDGE

TRIUM UNIT



DOUBLE JOINT PARALLELOGRAM 2° ASSEMBLY

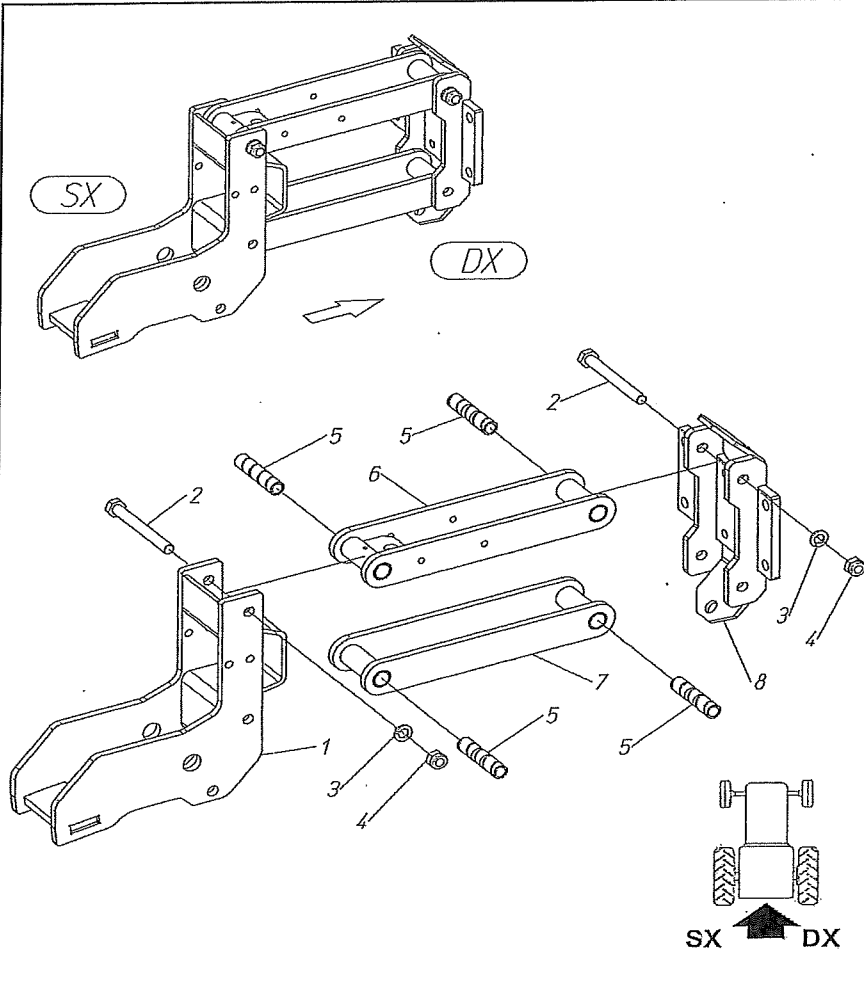
07-02-2013

Cherchi & Magli

Pos.	Code	Description
1	420815	MAIN FRAME TRIUM-TOP-BEST UNIT
2	420066	PIN D.25X130 WITH LEVER
3	941202	SPRING COTTER PIN
4	902264	SCREW TE M 16x170 - 8.8
5	400171	SPRING CUP
6	800006	SPRING 56 x 125
7	907109	FLAT WASHER 16 - R40
8	400255	SPRING REGULATOR
9	942007	LOCKING BAGUE 16-28-12
10	904003	GRUB-SCREW M 6x6 - 12.9
11	800026	PULL SPRING 222x40x 6
12	420350	SPRING ADJUSTING SCREW
13	400103	STEEL WASHER 17,1x25x1 - C70
14	907204	FLAT WASHER 6x18x2 ISO 4759
15	902443	SCREW TE M 6x10 - 8.8
16	401006	PLATE 50x15x130 (2 HOLES d17)
17	900225	SCREW TE M 14x120 - 8.8
18	400041	"U" BOLT M 14 (Q,80)
19	905008	NUT M 14 (HIGH) 6S
20	500431	AUTOMATIC DISENG.DEVICE DUAL/TRIUM/TXDR
21	902103	SCREW TE M 8x8 - 8.8
22	907105	FLAT WASHER 8 - R40
23	923001	NIPPLE M6
24	923003	NIPPLE M6 - 45°
25	400690	STICKER - GREASE
26	SEE TAB.	DOUBLE JOINT PARALLELOGRAM 1° ASSEMBLY

DOUBLE JOINT PARALLELOGRAM 2° ASSEMBLY

Pos.	Code	Description
1	420644	TRIUM PARALLELOGRAM BACK SUPP.
2	900226	SCREW TE M 14x130 - 8.8
3	907008	GROWER WASH. REINF 14 ZG
4	906108	NUT ATB M 14 (LOW) 6.8
5	401033	BUSH 14 X20 X 91(PARALLEL.2 ART.)
6	420645	UPPER ARM - PARALLELOGRAM
7	420646	LOWER ARM - PARALLELOGRAM
8	420643	FRONT SUPPORT PARALLELOGR.TXDR.

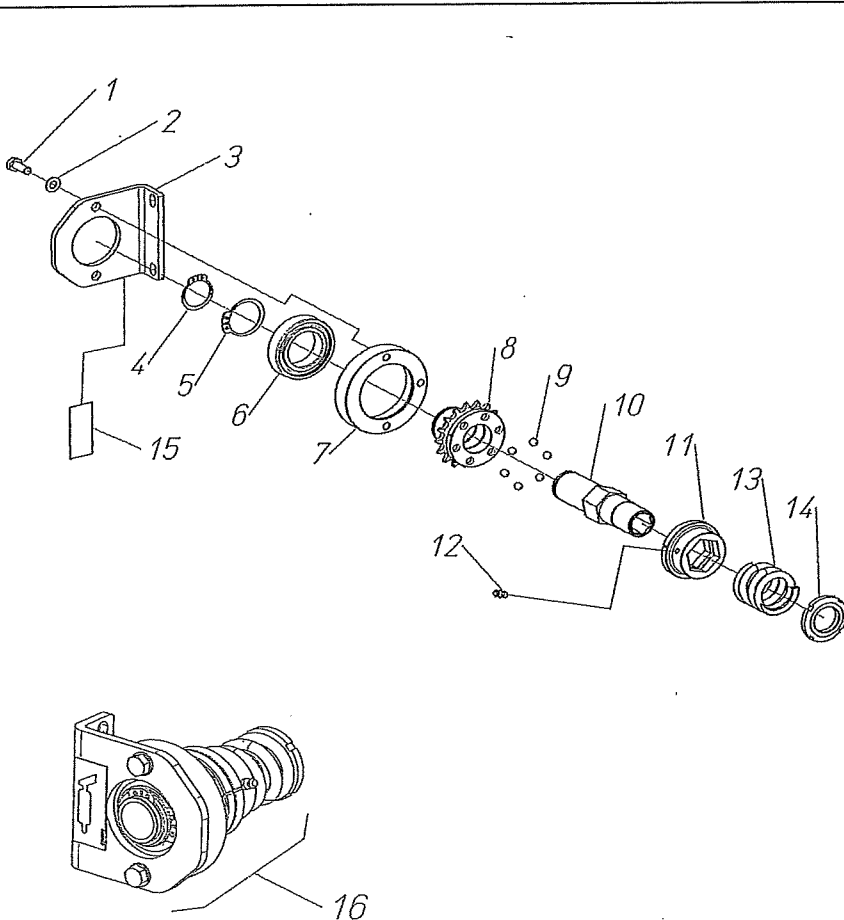


DOUBLE JOINT PARALLELOGRAM

1°ASSEMBLY

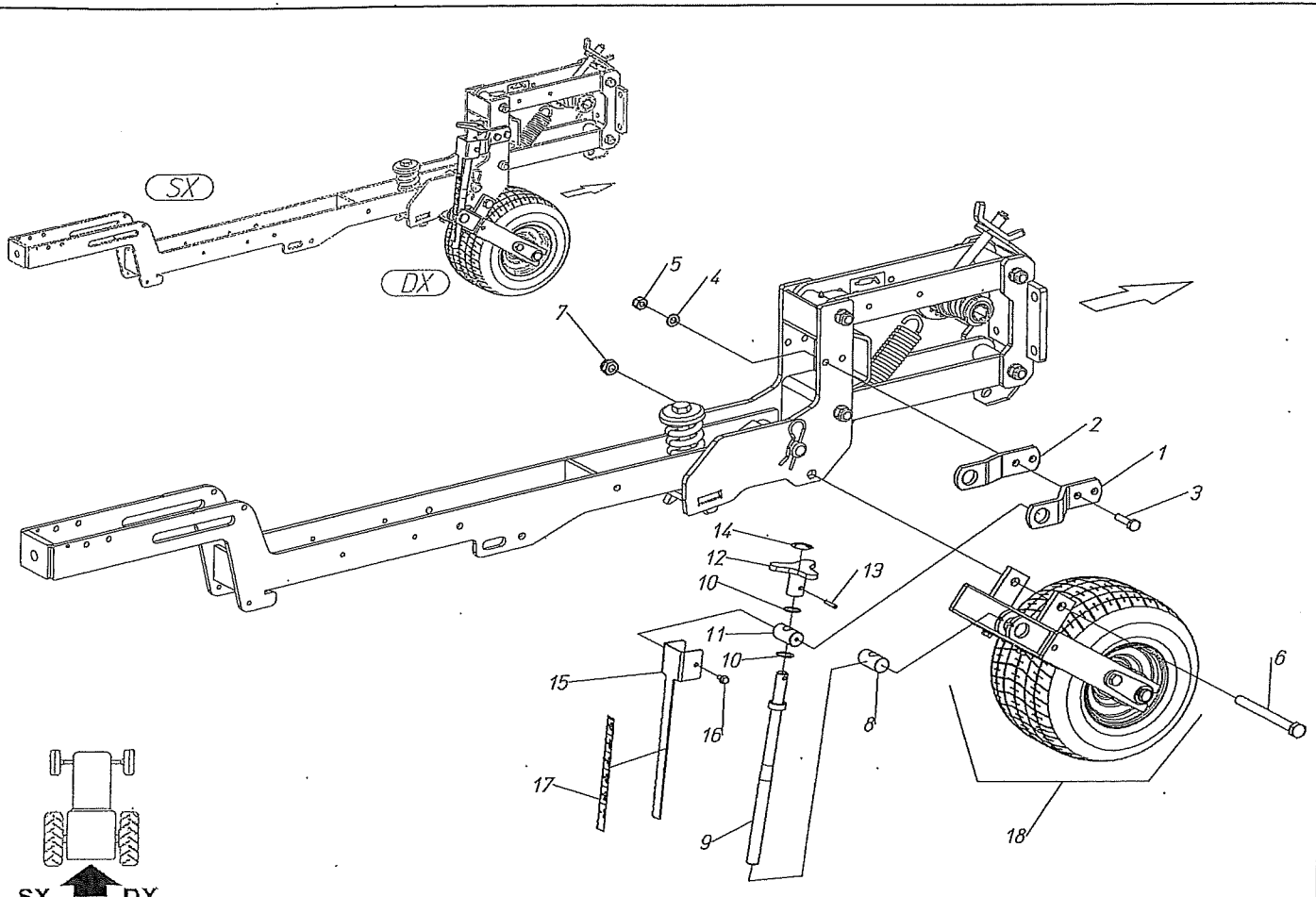
60206001

Pos.	Code	Description
1	902104	SCREW TE M 8x20 - 8.8
2	907105	FLAT WASHER 8 - R40
3	400983	BEARING SUPPORT PRLG
4	940501	SEEGER E 32
5	940502	SEEGER E 40
6	910116	BEARING 2RS 6008 (40- 68-15)
7	401013	BEARING HOLDER - DISENG.
8	402223	PINION Z17 3/16 DISENG. WITH BALLS Ø8
9	913200	GROUND BALL D.8
10	400927	INSIDE PIPE DISENG.DEVICE
11	402222	FLANGE FOR DISENG. WITH BALLS Ø8
12	923001	NIPPLE M6
13	800027	SPRING D.p.41 f.7 L=41
14	910050	NUT M 30X1,5 (KM6)
15	400690	STICKER - GREASE
16	500431	AUTOMATIC DISENG.DEVICE



500431 - AUTOMATIC DISENGAGEMENT DEVICE

0431



FLOATATION WHEEL WITH ADJUSTMENT SCREW

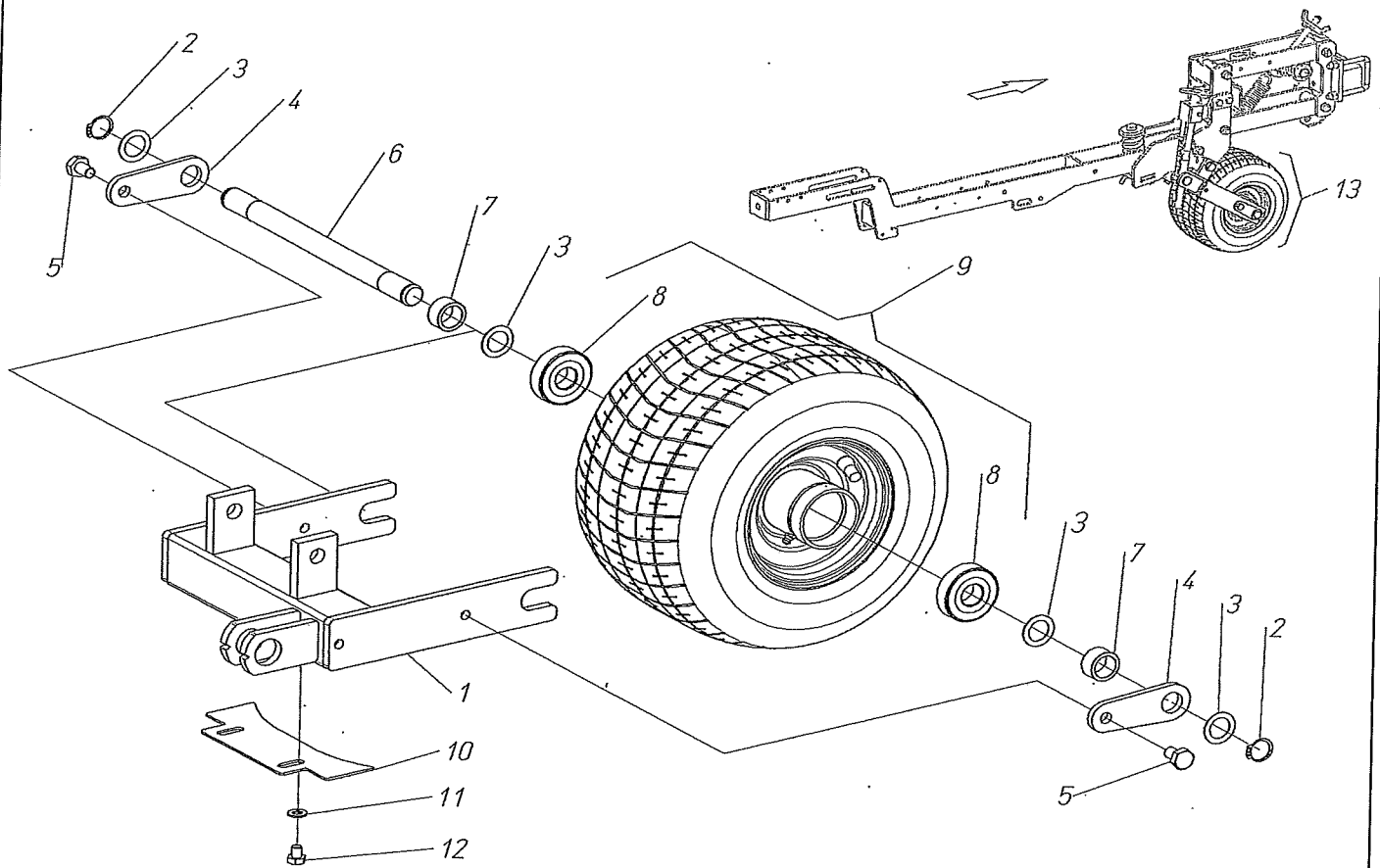
60208007 / 60206016



Pos.	Code	Description
1	401062	OUTSIDE SUPPORT - WHEEL ADJUSTMENT
2	401061	INSIDE SUPPORT - WHEEL ADJUSTMENT
3	900143	SCREW TE M 10x40 - 8.8
4	907106	FLAT WASHER 10 - R40
5	905006	NUT M 10 (HIGH) 6S
6	900228	SCREW TE M 14x150 - 8.8
7	906108	NUT ATB M 14 (LOW) 6.8
8	400220	PIN M18 - SUPPORT REGULATION
9	420726	SCREW ADJUSTMENT M18x145 L=330
10	400103	STEEL WASHER 17,1x25x1 - C70
11	400568	PIN 17 ADJ. SUPPORT WHEEL IN RUBBER M6
12	420836	ADJUSTMENT KNOB
13	941052	ELASTIC THORN 5X26
14	401265	ADHESIVE "+ E -"
15	401084	STICKER PLATE - WHEEL ADJUSTMENT
16	904697	SCREW TE M6x12 FLANGE 8.8
17	400942	STICKER - DEPTH 1-6
18	500771	TRIUM TYRE 285x180 APPLICATION KIT

FLOATATION WHEEL WITH ADJUSTMENT SCREW

60220055



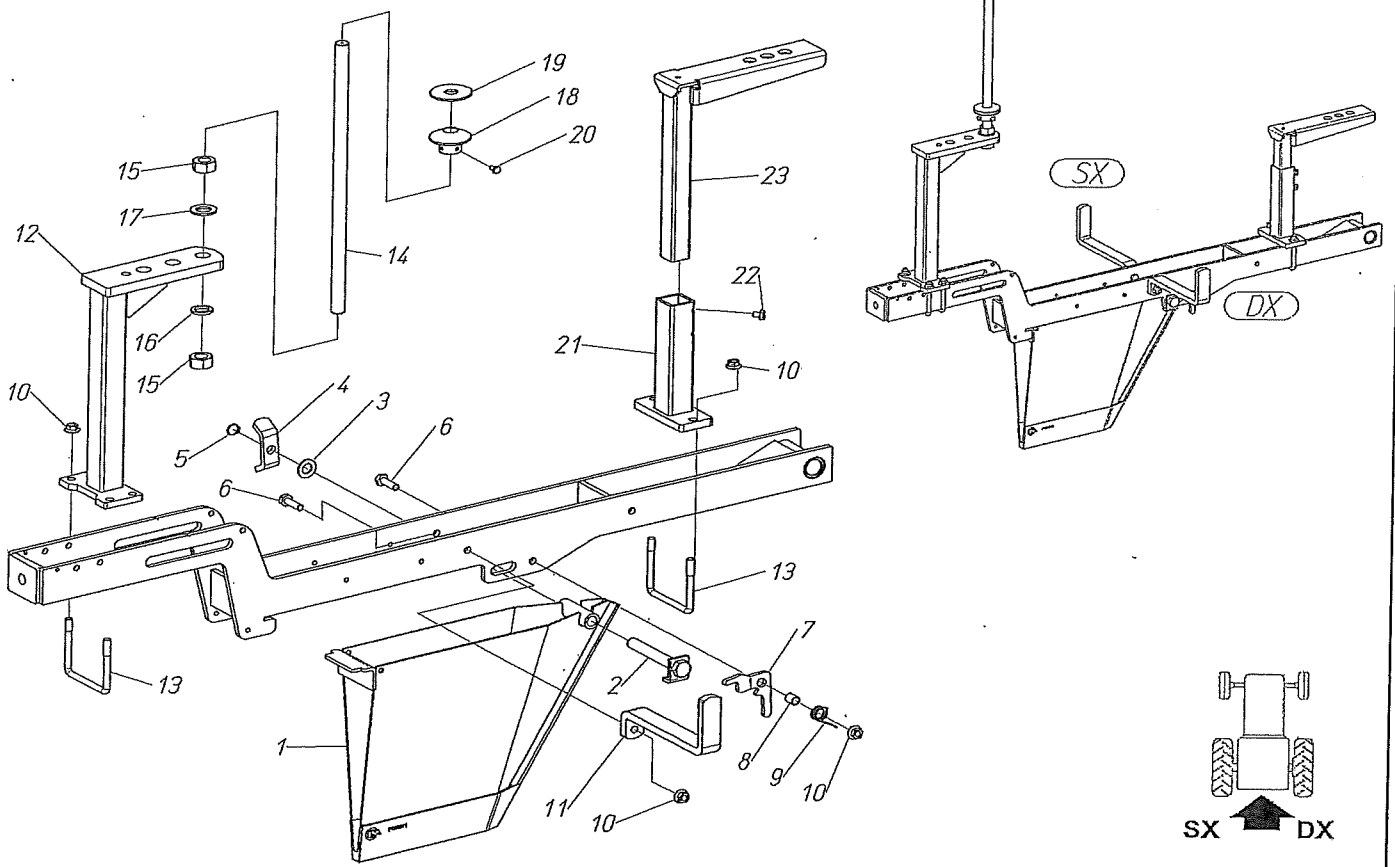
500771 - TRIUM TYRE 285x180 APPLICATION KIT

23-10-2013

Pos.	Code	Description
1	421955	PARALLELOGRAM WHEEL FORK 285X180 TRIUM
2	940506	SEEGER E 20
3	907323	FLAT WASHER 20 x30x1 - R40
4	402355	PLATELET SPINDLE STOP
5	902488	SCREW TE M 10x16 - 8.8
6	400924	PIN FLEX WHEEL (20x275)
7	402340	SPACER 20,5 X 28 X 15
8	910107	BEARING 2RS 6304 (20- 52-15)
9	914079	COMPL. WHEEL 11/7.10-5 KT737 RAIN 4PR
10	402386	WHEEL SCRAPER 285X180 TRIUM
11	907105	FLAT WASHER 8 - R40
12	902475	SCREW TE M8x10 - 8.8
13	500771	TRIUM TYRE 285x180 APPLICATION KIT

REPLACES 914047
front press wheel

500771 - TRIUM TYRE 285x180 APPLICATION KIT

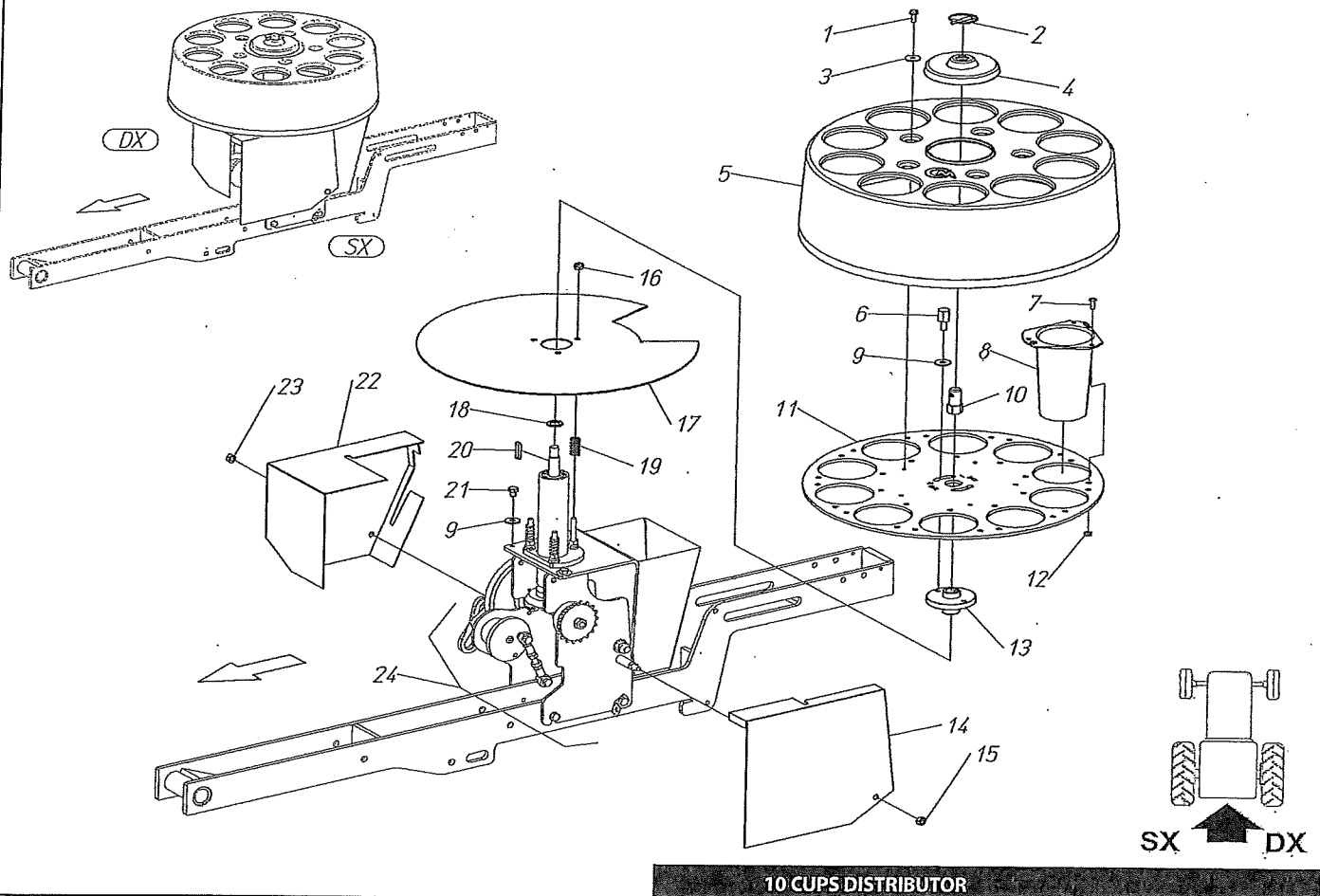


TRIUM MAIN FRAME

70220001

Pos.	Code	Description
1	SEE TAB.	RESUME SHARE-FLEXIBLEPLATE-INSERT
2	420829	SCREW FIXING TRIUM SHARE
3	907109	FLAT WASHER 16 - R40
4	400255	SPRING REGULATOR
5	940511	SEEGER E 16
6	902142	SCREW TE M 10x35 - 8.8
7	401243	SHARE BLOCKING LEVER - TRIUM
8	401270	SPACER 10,5 x 14 x 17
9	800002	LEFT SPRING FOR STOPPING
10	904965	NUT M 10 (FL/ZIG) 6.8
11	401752	FOOTREST TRIUM
12	421667	REINFORCED SUPPORT FOR ROTARY TRAYHOLDER
13	400164	U BOLT M 10 l= 99 (RETT.)
14	401487	TRAY-HOLDER SUPPORT POLE
15	905111	NUT M 20 (MEDIUM) 6S
16	907011	GROWER WASHER REINFORCED 20
17	907111	FLAT WASHER 20 - R40
18	421138	BUSH FOR TRAY HOLDER SUPPORT
19	401600	RUBBER WASHER
20	902443	SCREW TE M 6x10 - 8.8
21	421856	LOWER SUPPORT - REINF. SEAT
22	902475	SCREW TE M8x10 - 8.8
23	420692	SUPER SUPPORT. SEAT DUAL-TRIUM

60220002

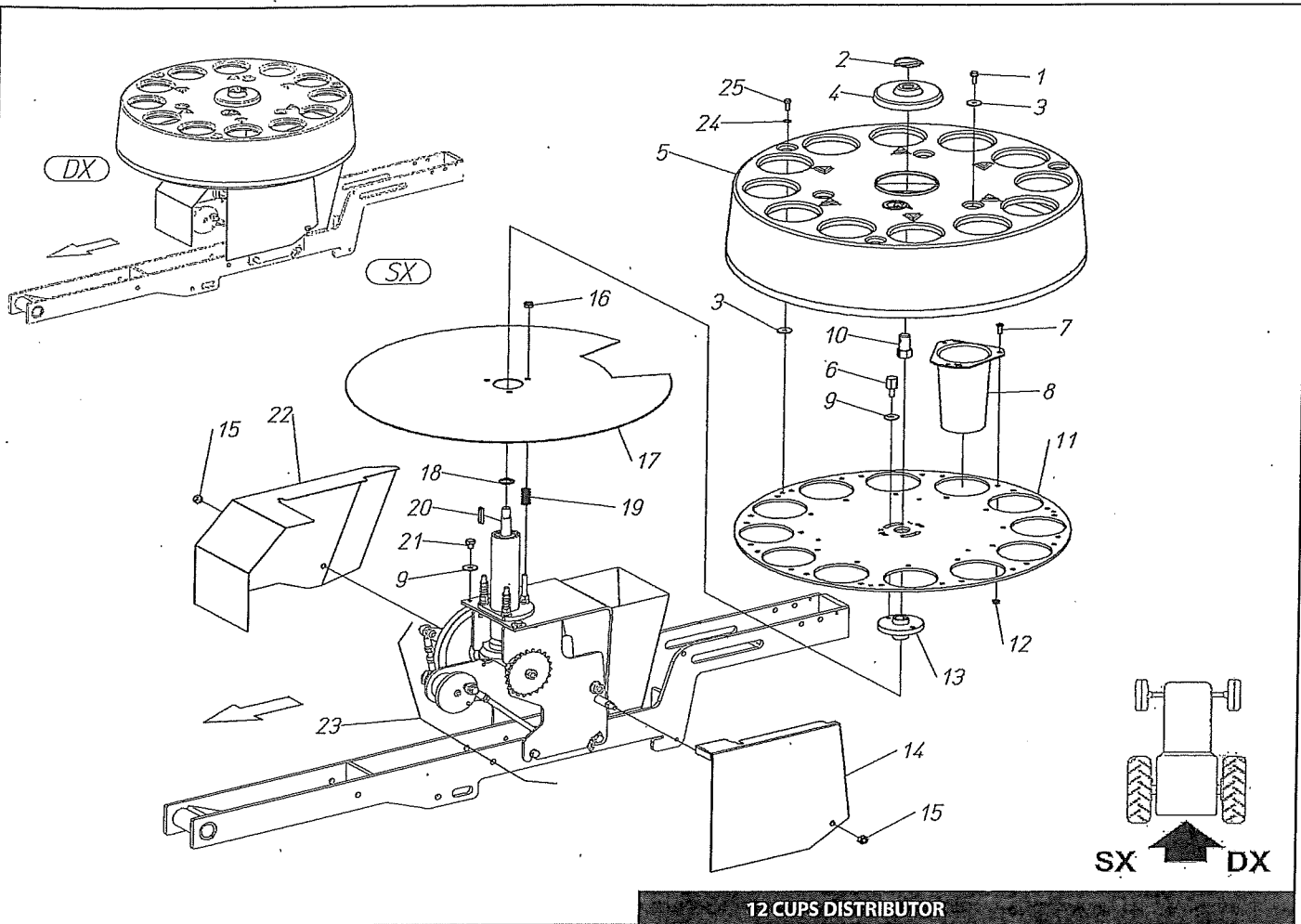


10 CUPS DISTRIBUTOR

01-08-2013

Pos.	Code	Description
1	904699	SCREW TE M 6x16 FLANGIAT 8.8
2	983117	RELEASE THORN Ø 5
3	907304	FLAT WASHER 6x24x2 - R40
4	402217	CENTRAL DISC PROTECTION BABY TRIUM
5	401237	TRIUM - COVER ABS 10 HOLES
6	401917	BOLT, TALL HEAD
7	904132	SCREW TBEI M 6x16 - 10.9
8	401216	TRIUM CUP
9	907305	FLAT WASHER 8x24x2 - R40
10	402216	FIXING SCREW DISC HOLDER FLANGE BABY TRIUM
11	401217	CUP HOLDER PLATE TRIUM 10 HOLES
12	906104	NUT ATB M 6 (LOW) 6.8
13	400994	12 HOLES DISTIBUTOR PHASING BUSH
14	401242	LEFT COVER REDUCER TRIUM
15	905105	NUT M 8 (MEDIUM) 6S
16	906105	NUT ATB M 8 (LOW) 6.8
17	401218	BOTTOM PLATE - TRIUM 10 CUPS DISTRIBUTOR
18	400289	WASHER 17 X25X2
19	800005	SPRING De.14,5 FILO d.1,5 L=30
20	931024	KEY 6x6x32
21	902475	SCREW TE M8x10 - 8.8
22	401241	RIGHT REDUCTION COVER TRIUM
23	905005	NUT M 8 (HIGH) 6S
24	SEE TAB.	REDUCER FOR 10 CUPS DISTRIBUTOR

10 CUPS DISTRIBUTOR



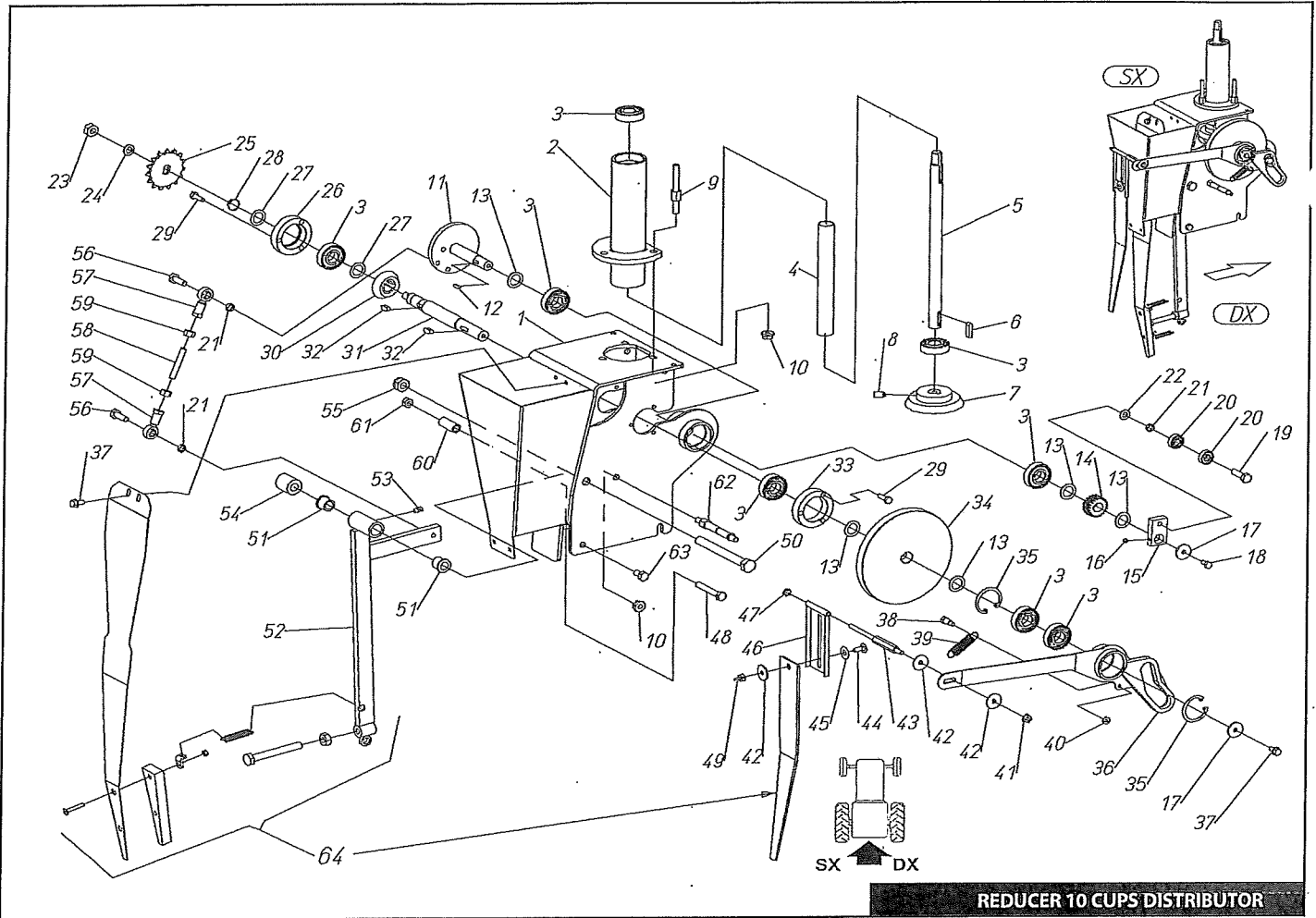
12 CUPS DISTRIBUTOR

60222003

Pos.	Code	Description
1	904699	SCREW TE M 6x16 FLANGIAT 8.8
2	983117	RELEASE THORN Ø 5
3	907304	FLAT WASHER 6x24x2 - R40
4	402217	CENTRAL DISC PROTECTION BABY TRIUM
5	400979	DISTRIBUTION PROTECTION 12 HOLES
6	401917	BOLT, TALL HEAD
7	904132	SCREW TBEI M 6x16 - 10.9
8	401216	TRIUM CUP
9	907305	FLAT WASHER 8x24x2 - R40
10	402216	FIXING SCREW DISC HOLDER FLANGE BABY TRIUM
11	401537	DISC FOR 12 CUP HOLDERS
12	906104	NUT ATB M 6 (LOW) 6.8
13	400994	12 HOLES DISTIBUTOR PHASING BUSH
14	401564	LEFT COVER FOR 12 CUPS REDUCER
15	905005	NUT M 8 (HIGH) 6S
16	906105	NUT ATB M 8 (LOW) 6.8
17	401540	SLIDING DISC FOR TRIUM 12 HOLES
18	400289	WASHER 17 X25X2
19	800005	SPRING De.14,5 FILO d.1,5 L=30
20	931024	KEY 6x6x32
21	902475	SCREW TE M8x10 - 8.8
22	401563	RIGHT COVER FOR 12 CUPS REDUCER
23	SEE TAB.	REDUCER FOR 12 CUPS DISTRIBUTOR
24	907104	FLAT WASHER 6 - R40
25	902468	SCREW TE M 6x16 - 8.8

CONVERSION KIT # 500569
From 10 cup to 12 cup.

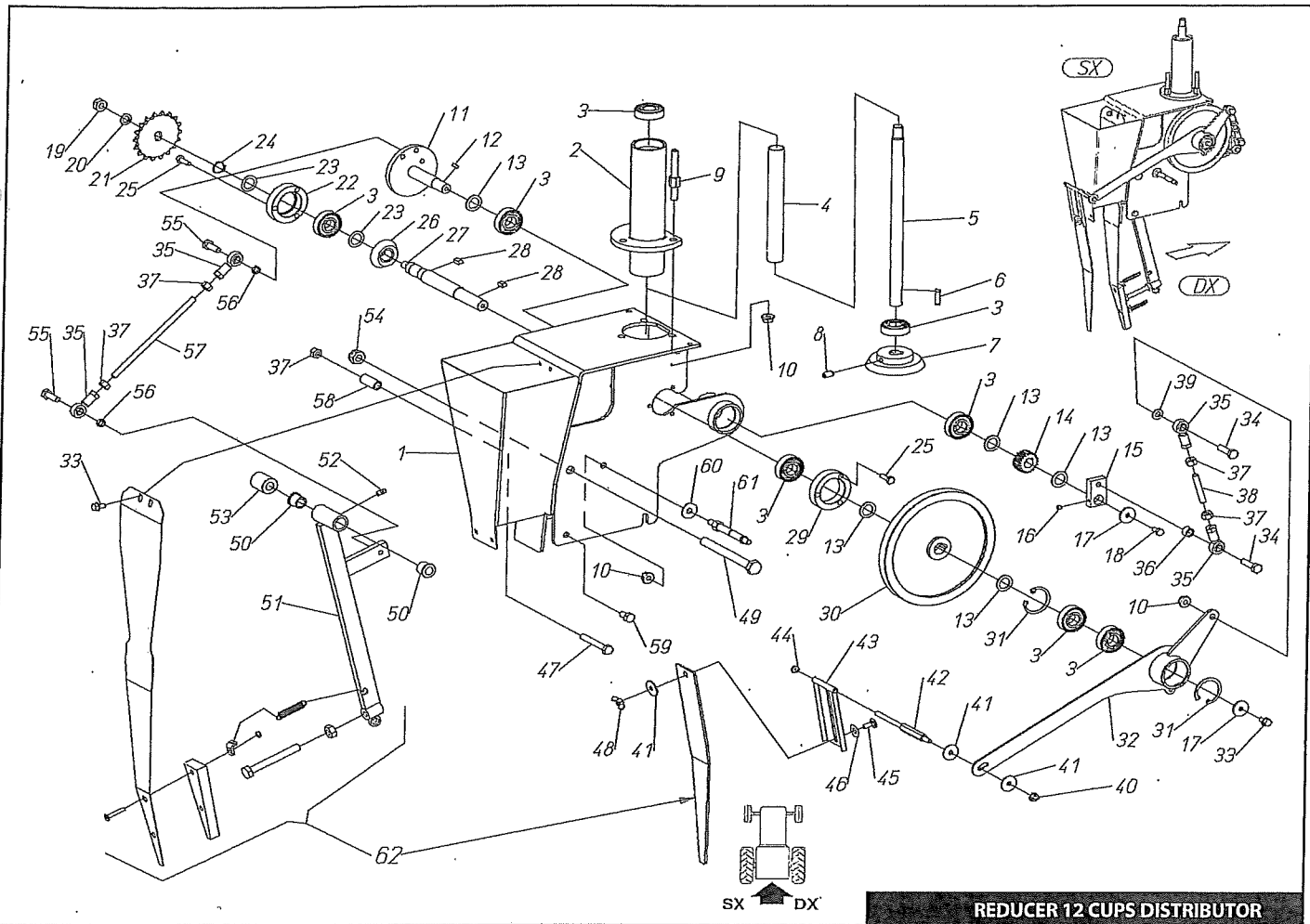
60220001



REDUCER 10 CUPS DISTRIBUTOR

Pos.	Code	Description	Pos.	Code	Description	Pos.	Code	Description
1	420816	REDUCER TRIUM	30	401226	CONIC WHEEL Z.16 M.2,5	59	905005	NUT M 8 (HIGH) 6S
2	421134	VERTICAL PIPE - REDUCER	31	401224	TRIUM- HORIZ. REDUCER SHAFT	60	400097	SPACER 8,5 x 14 x 35
3	910108	BEARING 2RS 6203 (17- 40-12)	32	931028	KEY 6x6x14	61	905105	NUT M 8 (MEDIUM) 6S
4	400184	SPACER 18 x 22 x 185	33	401235	BEARING SUPPORT TRIUM	62	401546	PIN - TRIUM COVER AND SPRING
5	400153	CONTROL DISTRIBUTOR SHAFT	34	401228	CYLINDRICAL PINION Z=100 M.1,5	63	902479	SCREW TE M8x16 - 8.8
6	931023	KEY 6x6x25	35	940015	SEEGER I 40	64	SEE TAB.	RESUME SHARE-FLEXIBLE PLAT
7	401227	CONIC WHEEL Z.32 M.2,5	36	420819	OPENING LEVER PLANTCONTROL			
8	904009	GRUB-SCREW M8x16 - 12.9	37	904697	SCREW TE M6x12 FLANGE 8.8			
9	402435	PIN M8 Ch.13x15 LOWER DISC	38	400175	SCREW FOR CUP			
10	904964	NUT M 8 (FL/ZIG) 6.8	39	800045	TRACTION SPRING			
11	420818	ECCENTRIC REDUCER TRIUM	40	905204	NUT M 6 (LOW) 6S			
12	931026	KEY 4x4x12	41	904963	NUT M 6 (FL/ZIG) 6.8			
13	400289	WASHER 17 X25X2	42	907304	FLAT WASHER 6x24x2 - R40			
14	400155	CONTROL GEAR Z 20	43	401368	FASTENING PIN PLANT CONTROL			
15	401229	CAM PLANT CONTROL TRIUM	44	903006	SCREW TTQS M6x16 - 4.6			
16	904003	GRUB-SCREW M 6x6 - 12.9	45	400536	SMOOTHING 8,2X20X0,2			
17	907311	FLAT WASHER 6x24x3 - R40	46	421003	PLANT CONTROL_UPPER PART			
18	902466	SCREW TE M 6x12 - 8.8	47	906104	NUT ATB M 6 (LOW) 6.8			
19	902107	SCREW TE M 8x30 - 8.8	48	900112	SCREW TE M 8x55 - 8.8			
20	910110	BEARING 2RS 608 (8-22-7)	49	904127	NUT ALET M 6 6S			
21	400535	SPACER 8,2 x 12 x 4,5	50	900191	SCREWTE M12x120 - 8.8			
22	907105	FLAT WASHER 8 - R40	51	985002	BUSH 12-18x18-22x3 -ex 930008			
23	905106	NUT M 10 (MEDIUM) 6S	52	420820	EJECTION LEVER TRIUM			
24	907006	GROWER WASH. REINF 10	53	923001	NIPPLE M6			
25	400786	PINION WITH HOLE Z 15 1/2x3/16	54	401271	SPACER 12,5 x 25 x 30			
26	401225	BEARING SUPPORT-REDUC.	55	906107	NUT ATB M12 (LOW) 6.8			
27	400103	STEEL WASHER 17,1x25x1 - C70	56	902106	SCREW TE M8x25 - 8.8			
28	940507	SEEGER E 17	57	913101	RIGHT ROUND HEAD M8			
29	902070	SCREW TE M 6x20 - 8.8	58	401236	TIE ROD M8 x 50			

REDUCER 10 CUPS DISTRIBUTOR

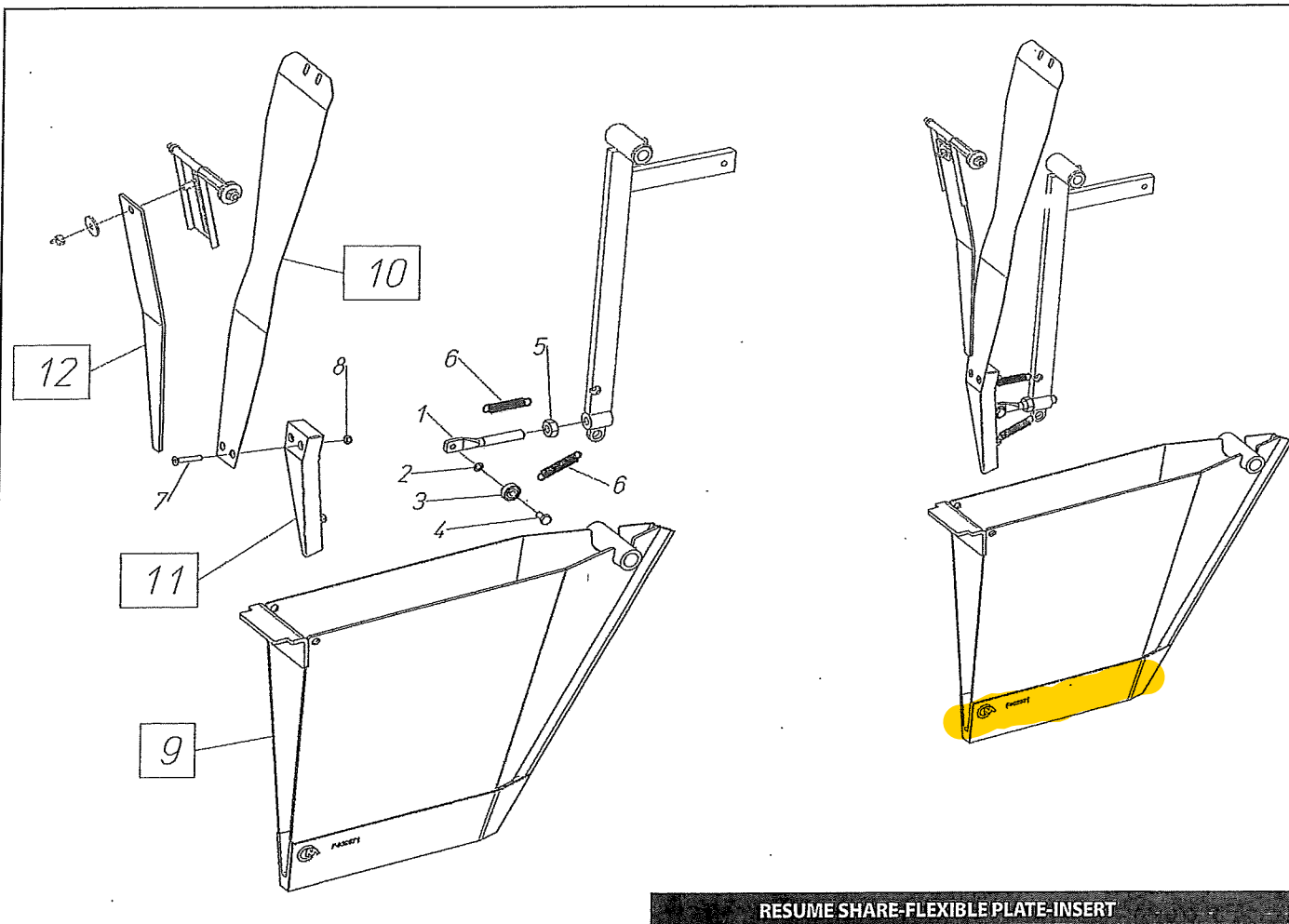


60222002

REDUCER 12 CUPS DISTRIBUTOR

Pos.	Code	Description	Pos.	Code	Description	Pos.	Code	Description	Chechi & Magli
1	421099	12 CUPS REDUCER	30	400151	REDUCER GEAR Z 120	59	902479	SCREW TE M8x16 - 8.8	
2	421134	VERTICAL PIPE - REDUCER	31	940015	SEEGER I 40	60	907305	FLAT WASHER 8x24x2 - R40	
3	910108	BEARING 2RS 6203 (17- 40-12)	32	421101	12 CUPS PLANTCONTROL LEVER	61	401546	PIN-TRIUM COVER AND SPRING	
4	400184	SPACER 18 x 22 x 185	33	904697	SCREW TE M6x12 FLANGE 8.8	62	SEE TAB.	RESUME SHARE-FLEXIBLE PLAT	
5	400153	CONTROL DISTRIBUTOR SHAFT	34	902107	SCREW TE M 8x30 - 8.8				
6	931023	KEY 6x6x25	35	913101	RIGHT ROUND HEAD M8				
7	401227	CONIC WHEEL Z.32 M.2,5	36	401182	SPACER 8,5 x 14 x 9,5				
8	904009	GRUB-SCREW M8x16 - 12.9	37	905005	NUT M 8 (HIGH) 6S				
9	402435	PIN M8 Ch.13x15 LOWER DISC	38	401236	TIE ROD M8 x 50				
10	904964	NUT M 8 (FL/ZIG) 6.8	39	907105	FLAT WASHER 8 - R40				
11	420818	ECCENTRIC REDUCER TRIUM	40	904963	NUT M 6 (FL/ZIG) 6.8				
12	931026	KEY 4x4x12	41	907304	FLAT WASHER 6x24x2 - R40				
13	400289	WASHER 17 X25X2	42	401368	FASTENING PIN PLANT CONTROL				
14	400155	CONTROL GEAR Z 20	43	421003	PLANT CONTROL_UPPER PART				
15	401229	CAM PLANT CONTROL TRIUM	44	906104	NUT ATB M 6 (LOW) 6.8				
16	904003	GRUB-SCREW M 6x6 - 12.9	45	903006	SCREW TTQS M6x16 - 4.6				
17	907311	FLAT WASHER 6x24x3 - R40	46	400536	SMOOTHING 8,2X20X0,2				
18	902466	SCREW TE M 6x12 - 8.8	47	900113	SCREW TE M 8x60 - 8.8				
19	905106	NUT M 10 (MEDIUM) 6S	48	904127	NUT ALET M 6 6S				
20	907006	GROWER WASH. REINF 10	49	900191	SCREW TE M12x120 - 8.8				
21	400109	PINION WITH HOLE Z 18 1/2x3/16	50	985002	BUSH 12-18x18-22x3 -ex 930008				
22	401225	BEARING SUPPORT-REDUC.	51	421129	LEVER FOR KICKER - 12 CUPS				
23	400103	STEEL WASHER 17,1x25x1 - C70	52	923001	NIPPLE M6				
24	940507	SEEGER E 17	53	401271	SPACER 12,5 x 25 x 30				
25	902070	SCREW TE M 6x20 - 8.8	54	906107	NUT ATB M12 (LOW) 6.8				
26	401226	CONIC WHEEL Z.16 M.2,5	55	902106	SCREW TE M8x25 - 8.8				
27	401224	TRIUM- HORIZ. REDUCER SHAFT	56	400535	SPACER 8,2 x 12 x 4,5				
28	931028	KEY 6x6x14	57	400178	SCREW M8				
29	401235	BEARING SUPPORT TRIUM	58	400097	SPACER 8,5 x 14 x 3,5				

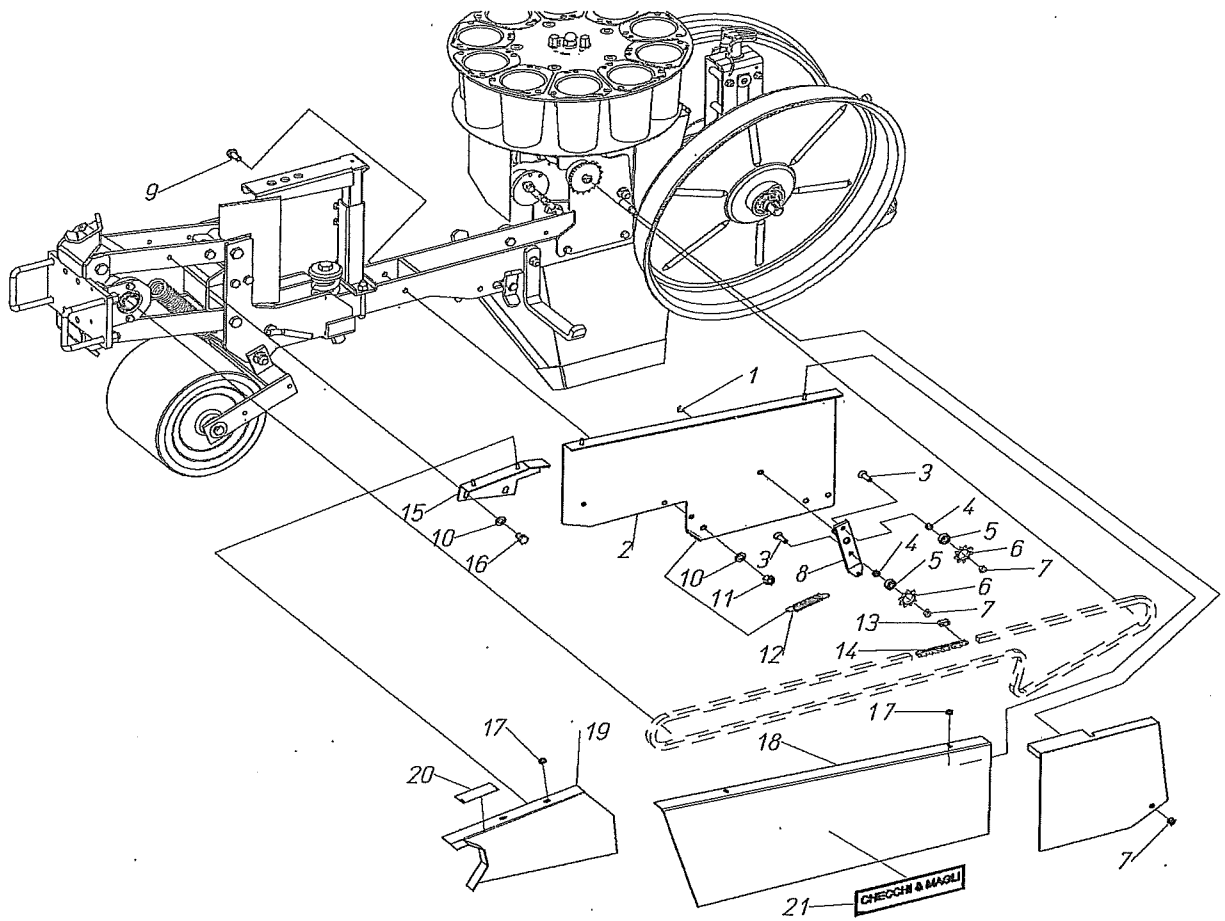
RIERVOM-PIATTO FL-INS.



RESUME SHARE-FLEXIBLE PLATE-INSERT



Pos.	Code	Description
1	421765	SCREW FLEXIBLE PLATE WITH BEARING
2	907200	FLAT WASHER 6x10x1 ZB
3	910125	BEARING 2RS 626 (6-19-6)
4	902466	SCREW TE M 6x12 - 8.8
5	905106	NUT M 10 (MEDIUM) 6S
6	800042	TRACTION SPRING de 10 THREAD 1.3 L=40
7	904103	SCREW TSEI M 5x 30 UNI5933 10.9 ZG
8	906103	NUT ATB M 5 (LOW) UNI7474 6.8 ZG
NARROW SHARE		
9	421584	NARROW SHARE TRIUM-BEST-TOP INS.L=8
10	402647	FLEXIBLE PLATE CAST IRON SHARE L=6
11	402569	INSERT L=6 FLEXIBLE PLATE TRIUM NARROW SHARE
12	401426	PLANT CONTROL TRIUM_LOWER PART (STANDARD SHARE)
9	421601	STD SHARE TRIUM-BEST-TOP INS.L=14
10	402635	FLEXIBLE PLATE CAST IRON SHARE L=9
11	402570	INSERT L=9 FLEXIBLE PLATE TRIUM STANDARD SHARE
12	401426	PLANT CONTROL TRIUM_LOWER PART
	402071	CASTING MIDDLE SHARE
9	421695	SHARE TRIUM-BEST-TOP INS.L=24
10	402648	FLEXIBLE PLATE CAST IRON SHARE L=20
11	402574	INSERT L=20 FLEXIBLE PLATE TRIUM MIDDLE SHARE
12	401426	PLANT CONTROL TRIUM_LOWER PART
	402263	CASTING MEDIUM SHARE
9	420885	MEDIUM SHARE TRIUM-BEST-TOP INS.L=33
10	402649	FLEXIBLE PLATE CAST IRON SHARE L=24
11	402575	INSERT L=24 FLEXIBLE PLATE TRIUM MEDIUM SHARE
12	401426	PLANT CONTROL TRIUM_LOWER PART
	402263	CASTING LARGE SHARE
9	420896	LARGE SHARE TRIUM-BEST-TOP INS.L=43
10	402649	FLEXIBLE PLATE TRIUM L=26 MEDIUM SHARE
11	402575	INSERT L=26 FLEXIBLE PLATE TRIUM
12	401492	PLANT CONTROL_LOWER PART - LARGE SHARE
	402094	CASTING, STANDARD RUNNER



TRIUM TRANSMISSION COVER AND CHAIN

70220003

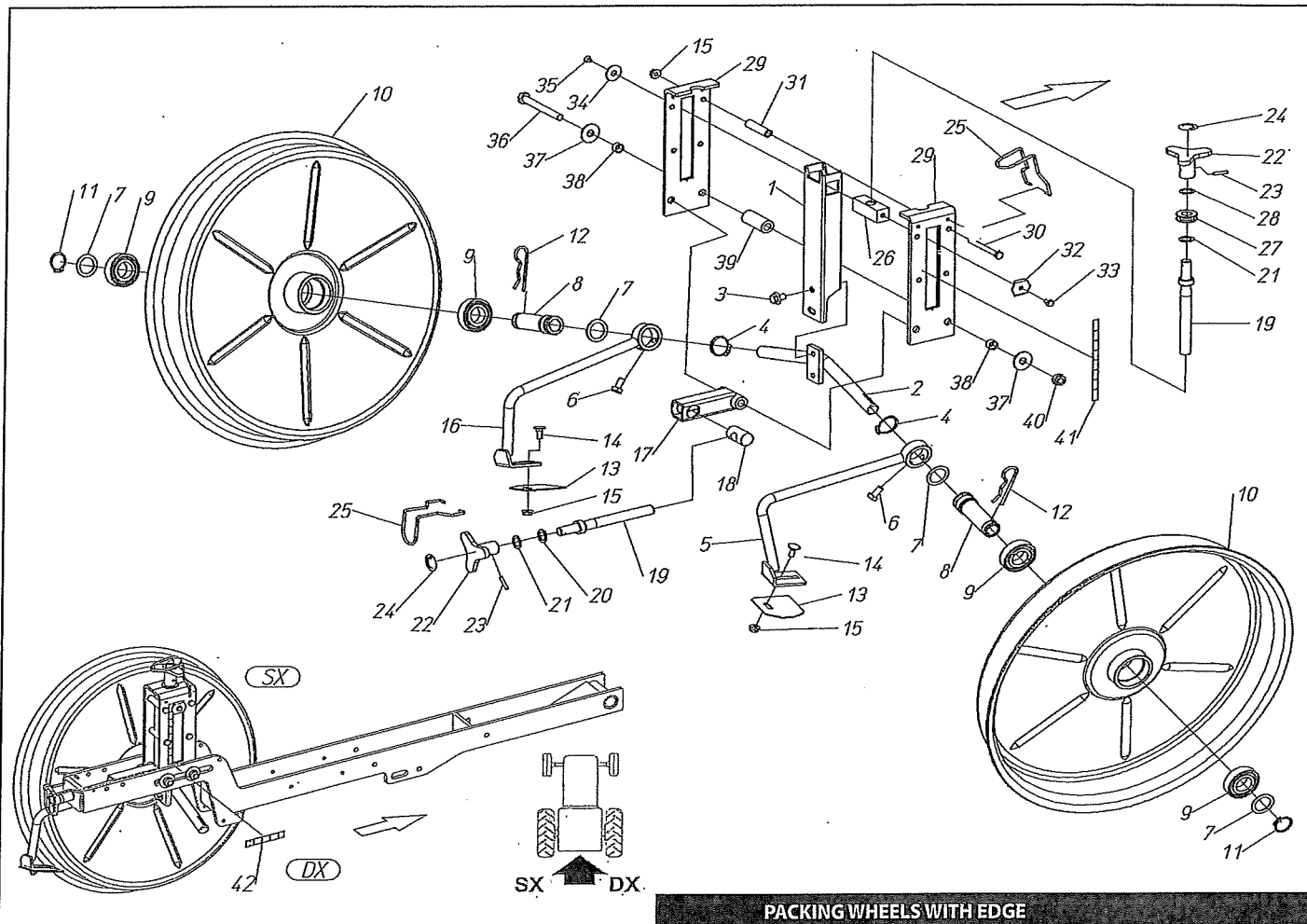
16-11-2012



Pos.	Code	Description
1	940527	ELASTIC RING D.8 BENZING
2	420649	PARALLELOGRAM REAR COVER SUPPORT
3	904116	SCREW TSEI M 8x30 - 10.9
4	400263	SPACER 8,5 x 12 x 7,5
5	910110	BEARING 2RS 608 (8-22-7)
6	400239	PINION Z 9 1/2x3/16 F.22
7	905105	NUT M 8 (MEDIUM) 6S
8	420211	DISTRIBUTOR CHAIN TENSIONER
9	902140	SCREW TE M 10x 25 UNI5739 8.8 ZG
10	907106	FLAT WASHER 10 - R40
11	905006	NUT M 10 (HIGH) 6S
12	800003	DRIVE-CHAIN TENSIONER SPRING
13	930502	JUNCTION LINK 1/2x3/16 (CZ)
14	930031	CHAIN 1/2X3/16 STEPS 193 (CZ)
15	420691	FRONT COVER SUPPORT
16	902137	SCREW TE M 10x18 - 8.8
17	904963	NUT M 6 (FL/ZIG) 6.8
18	401096	REAR CHAIN COVER
19	420641	FRONT COVER CHAIN TEXDRIVE PRLG
20	400650	STICKER "OIL" (CHAIN)
21	400404	STICKER C & M 245X60

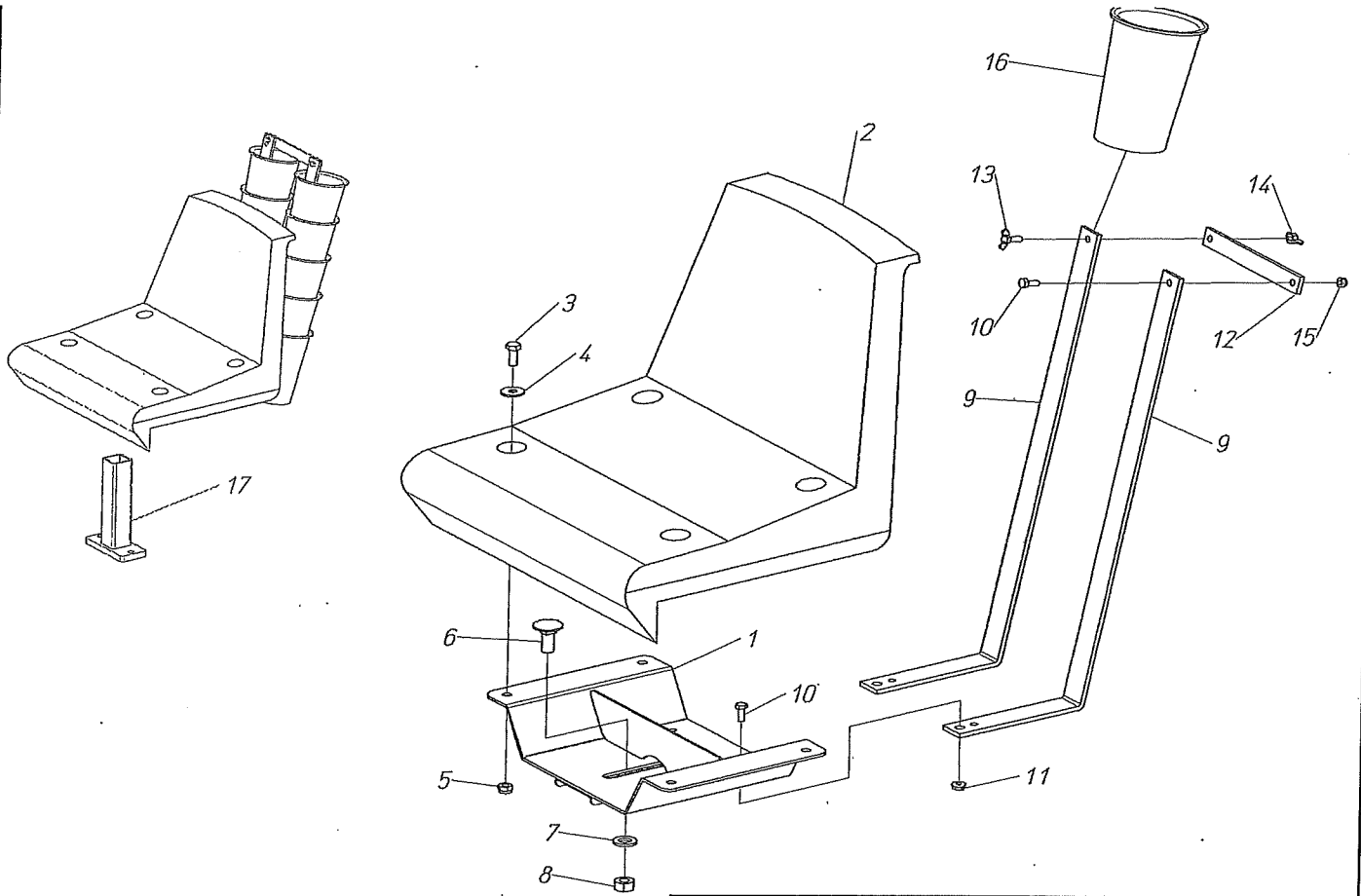
TRIUM TRANSMISSION COVER AND CHAIN

70220002



Pos.	Code	Description	Pos.	Code	Description
1	402391	COLUMN SUPPORT PACKING WHEELS TRIUM ADJUSTABLE	30	900118	SCREW TE M 8x85 - 8.8
2	421786	ADJUSTABLE TRIUM PACKING WHEELS SUPPORT	31	401376	SPACER 9 x 15 x 60,5
3	904704	SCREW TE M 10x16 FLANGIAT 8.8	32	401438	INDEX - PACKING WHEELS DEPTH
4	940514	SEEGER E 35	33	904697	SCREW TE M6x12 FLANGE 8.8
5	420887	RIGHT SCRAPER SUPPORTING ARM TRIUM	34	907306	FLAT WASHER 10x30x2,5 - R40
6	902138	SCREW TE M 10x20 - 8.8	35	904144	SCREW TSEI M 6x10 - 10.9
7	907317	FLAT WASHER 30x42x1 - R40	36	900193	SCREW TE M 12x110 - 8.8
8	401231	BUSHING TRIUM WHEELS	37	907309	FLAT WASHER 12x36x2,5 - R40
9	910109	BEARING 2RS 6206 (30- 62-16)	38	401252	SPACER 13 x 17 x 9
10	420894	PACKING WHEEL D. 557 WITH HUB WITH OUTSIDE EDGE	39	401254	SPACER 13 x 25 x 60,5
11	940504	SEEGER RETAINING RING e 30	40	906107	NUT ATB M12 (LOW) 6.8
12	941202	SPRING COTTER PIN	41	401439	WHEEL ADJUSTMENT STICKER
13	401346	PACKING WHEEL SCRAPER (WITH EDGE)	42	402176	ADJUSTMENT SCALE STICKER
14	902581	BOLT TTQS M 8x20 - 4.6			
15	904964	NUT M 8 (FL/ZIG) 6.8			
16	420888	LEFT SCRAPER SUPPORTING ARM TRIUM			
17	420828	TRIUM REGULATION TIE ROD			
18	400220	PIN M18 - SUPPORT REGULATION			
19	420956	ADJUSTMENT SCREW M18x120 L=191			
20	400289	WASHER 17 X25X2			
21	400103	STEEL WASHER 17,1x25x1 - C70			
22	420836	ADJUSTMENT KNOB			
23	941052	ELASTIC THORN 5X26			
24	401265	ADHESIVE "+ E -"			
25	401375	BLOCKING SPRING FOR WHEEL ADJUSTMENT			
26	401350	PIN M18 - WHEEL ADJUSTMENT DUAL GOLD			
27	401349	CONTROL BUSH FOR WHEELS-ADJUSTING SCREW			
28	400344	STEEL WASHER 17,1X25 X0,5			
29	401348	SUPPORT GUIDE WHEEL REGULATION			

60220029-60222007



REINFORCED PLASTIC SEAT WITH EXSTENSIONS

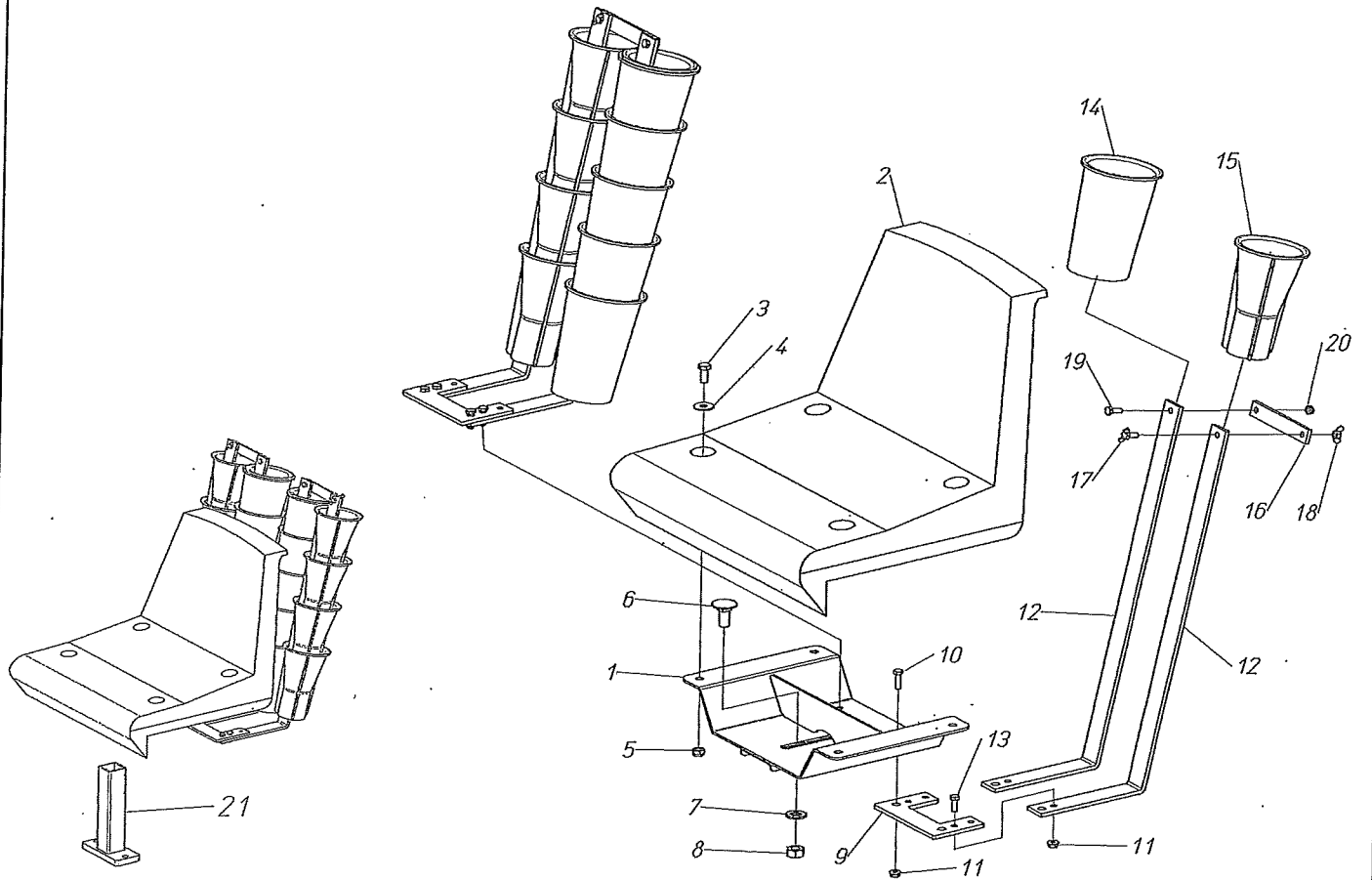
04-12-2013



Pos.	Code	Description
1	421857	REINF. SEAT SUPPORT PLATE
2	983007	PLASTIC SEAT M2010 BLACK UV F0009
3	902104	SCREW TE M 8x20 - 8.8
4	907305	FLAT WASHER 8x24x2 - R40
5	906105	NUT ATB M 8 (LOW) 6.8
6	902549	BOLT TTQS M 12x30 - 4.6
7	907107	FLAT WASHER 12 R40
8	905107	NUT M 12 (MEDIUM) 6.5
9	401320	SEAT SUPPORT FOR 10 EXTENSION
9	401863	SEAT SUPPORT FOR 12 EXTENSION
10	902468	SCREW TE M 6x16 - 8.8
11	904963	NUT M 6 (FL/ZIG) 6.8
12	401273	FIXED SHAFT SUPPORT
13	904126	SCREW ALET M 6x15 - 4.8
14	904127	NUT ALET M 6 6.5
15	906104	NUT ATB M 6 (LOW) 6.8
16	401260	DISTRIBUTOR EXTENSION TRIUM
17	421856	LOWER SUPPORT - REINF. SEAT

REINFORCED PLASTIC SEAT WITH EXSTENSIONS

60220030-60222008



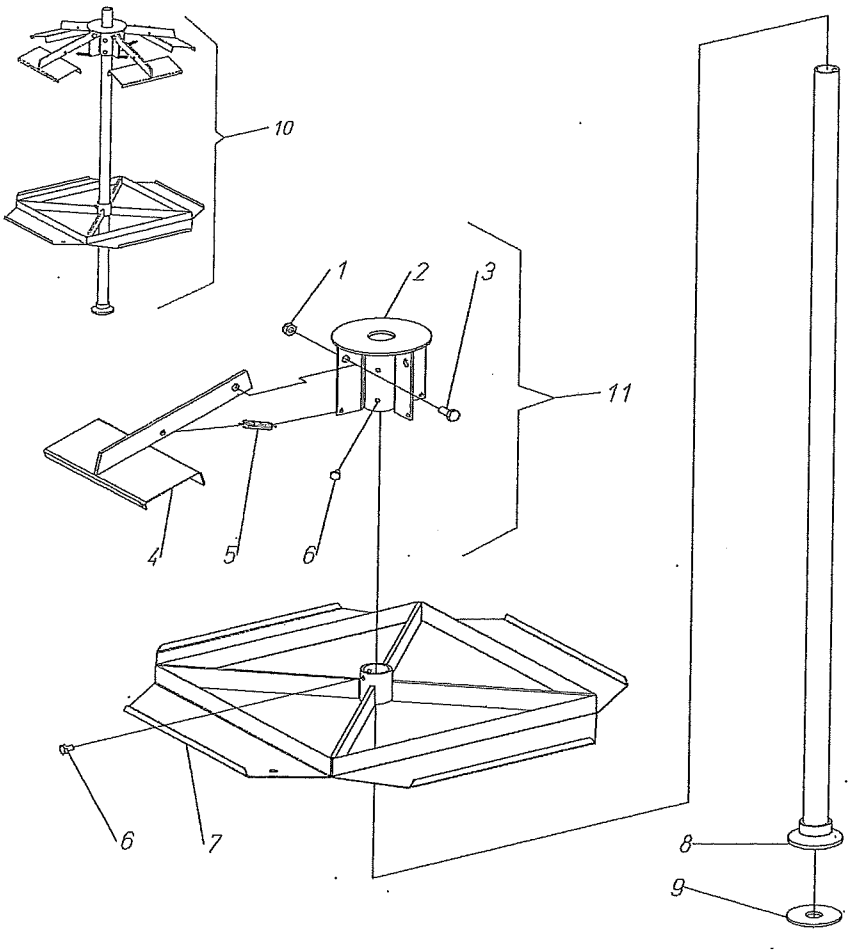
REINF.PLASTIC SEAT WITH EXTENSIONS AND REDUCTIONS

05-12-2013

Chacchi & Magli

Pos.	Code	Description
.1	421857	REINF. SEAT SUPPORT PLATE
2	983007	PLASTIC SEAT M2010 BLACK UV F0009
3	902104	SCREW TE M 8x20 - 8.8
4	907305	FLAT WASHER 8x24x2 - R40
5	906105	NUT ATB M 8 (LOW) 6.8
6	902549	BOLT TTQS M 12x30 - 4.6
7	907107	FLAT WASHER 12 R40
8	905107	NUT M 12 (MEDIUM) 6S
9	401459	BINDING PLATE FOR TRIUM REDUCTIONS
10	902071	SCREW TE M 6x22 - 8.8
11	904963	NUT M 6 (FL/ZIG) 6.8
12	401320	SEAT SUPPORT FOR 10 EXTENSION
12	401863	SEAT SUPPORT FOR 12 EXTENSION
13	902069	SCREW TE M 6x18 - 8.8
14	401260	DISTRIBUTOR EXTENSION TRIUM
15	401309	CUP REDUCER
16	401935	FIXING PLATE-TRIUM DISTRIBUTOR EXTENSION SUPPORT
17	904126	SCREW ALET M 6x15 - 4.8
18	904127	NUT ALET M 6 6S
19	902468	SCREW TE M 6x16 - 8.8
20	906104	NUT ATB M 6 (LOW) 6.8
21	421856	LOWER SUPPORT - REINF. SEAT

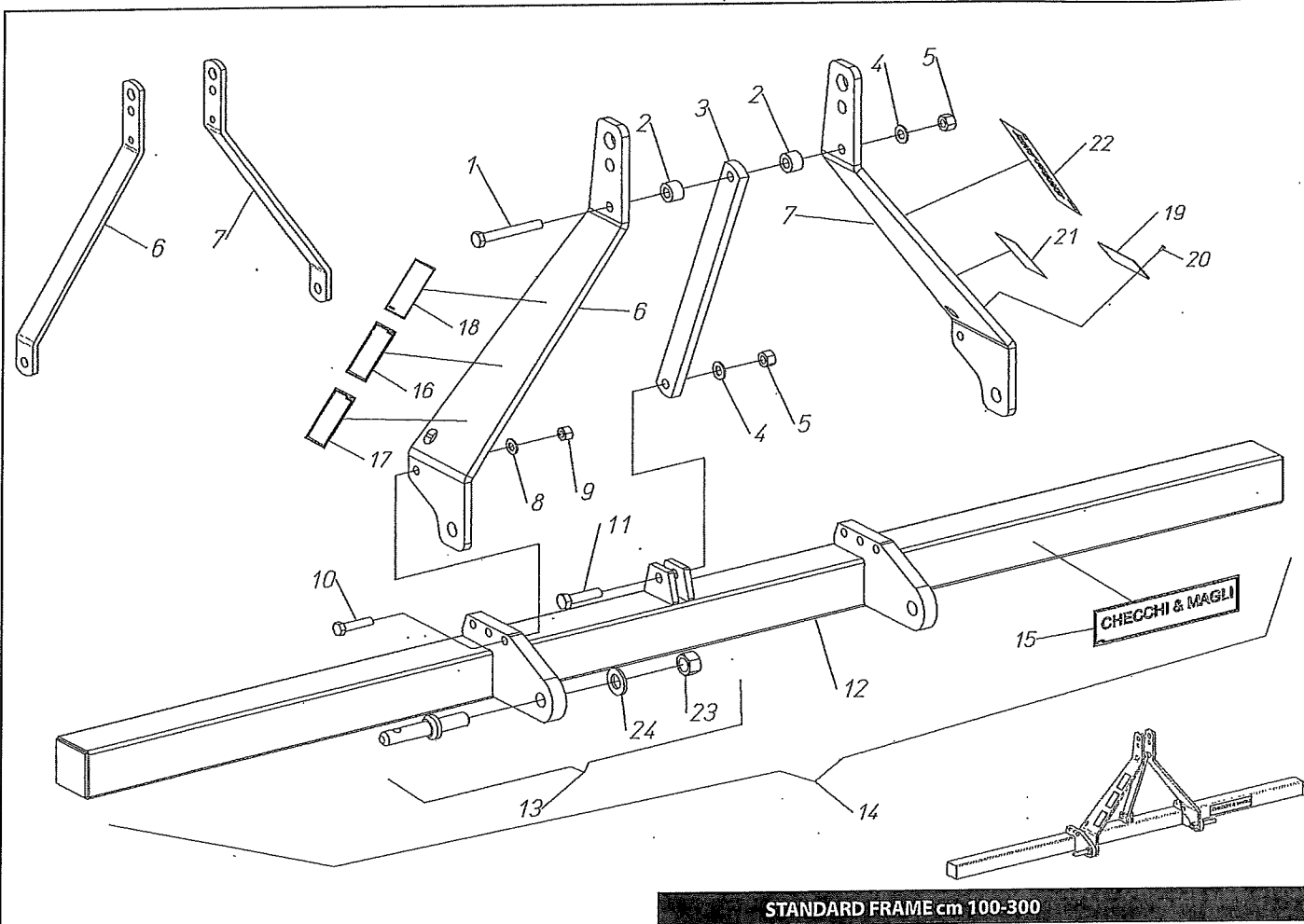
REINF.PLASTIC SEAT WITH EXTENSIONS AND REDUCTIONS



Pos.	Code	Description
1	906105	NUT ATB M 8 (LOW) 6.8
2	420143	CLOSING ARM SUPPORT
3	902104	SCREW TE M 8x20 - 8.8
4	420142	CLOSING ARM ROTARY TRAY HOLDER
5	800049	SPRING ROTARY TRAY HOLDER
6	902443	SCREW TE M 6x10 - 8.8
7	420140	TRAYHOLDER LOWER SHELF
8	421489	ROTARY-TRAY ATTRITION PIPE L=750
8	421137	ROTARY-TRAY ATTRITION PIPE L=1000
8	421132	ROTARY-TRAY ATTRITION PIPE L=1500
8	421133	ROTARY-TRAY ATTRITION PIPE L=2000
9	401600	RUBBER WASHER
10	500032	ROTARY TRAY HOLDER
11	500436	UPPER TRAY HOLDER ASSEMBLY

70202003

500032 - ROTARY TRAY HOLDER



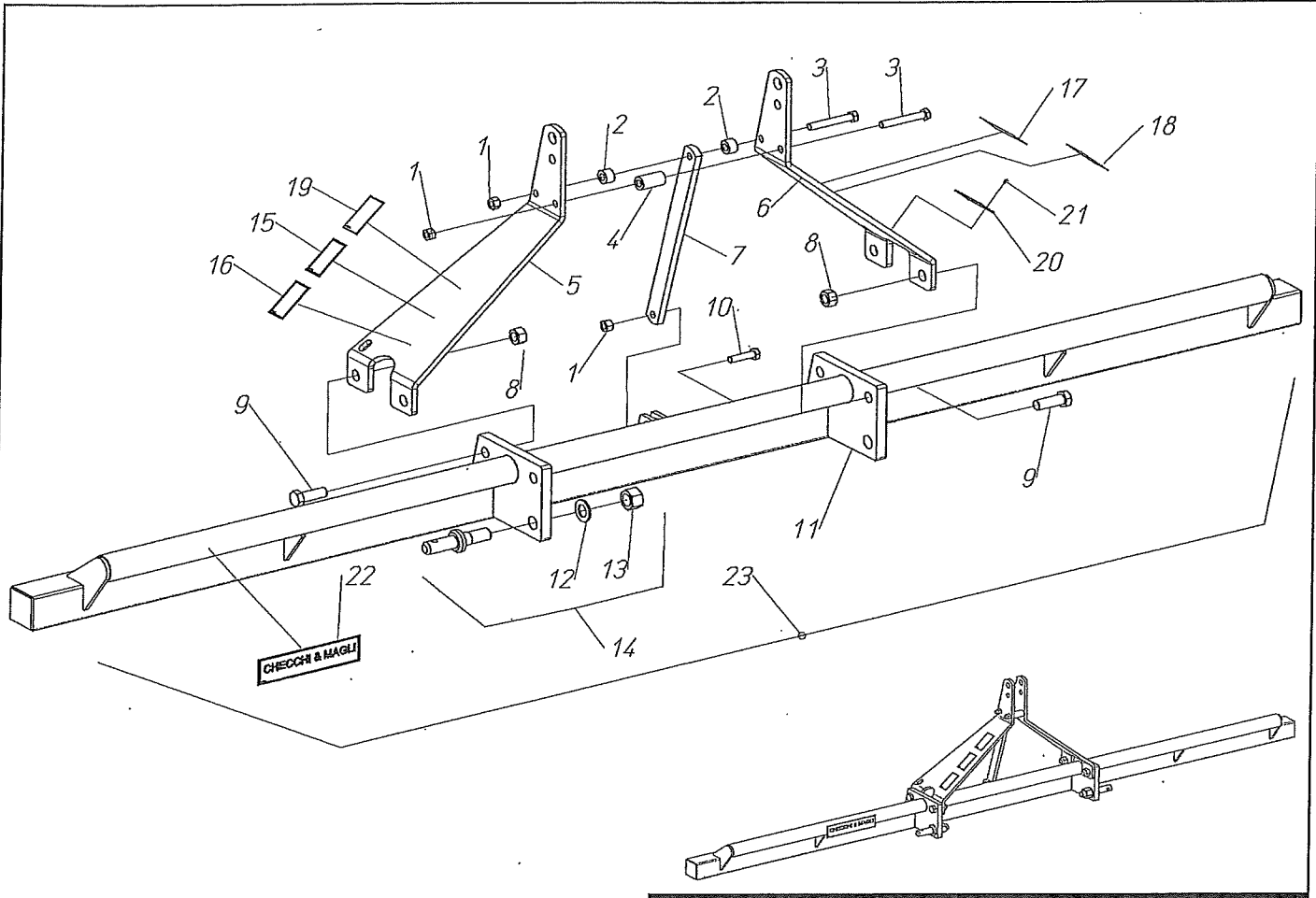
STANDARD FRAME cm 100-300

70102004-005-013-026-027

15-03-2013

Pos.	Code	Description	Pos.	Code	Description
1	900223	SCREW TE M 14x100 - 8.8	20	941300	RIVET D 2,9x7 UNI7346 A
2	400168	SPACER 15 x 30 x 19,5	21	400654	STICKER - MAINTENANCE
3	400166	THIRD POINT TIE ROD	22	400167	ADHESIVE TEX
4	907108	FLAT WASHER 14 - R40	22	400340	TEXDRIVE ADHESIVE
5	905008	NUT M 14 (HIGH) 65	22	401561	STICKER "TEXDRIVE BEST"
6	401457	RIGHT 3rd POINT REINF. PLATE FOR STD FRAME	22	401261	TRIUM STICKER
6	400645	RIGHT 3rd POINT PLATE FOR STD FRAME	22	401692	STICKER "UNITRIUM"
7	401458	LEFT 3rd POINT REINF. PLATE FOR STD FRAME	22	402031	STICKER "BABY"
7	400022	LEFT SIDE 3rd POINT LINKAGE - 1° CAT	22	400077	FOX ADHESIVE
8	907107	FLAT WASHER 12 R40	22	400257	FOXDRIVE ADHESIVE
9	905007	NUT M 12 (HIGH) 65	22	400326	STICKER "WOLF"
10	900179	SCREW TE M 12x50 - 8.8	22	400771	STICKER "WOLF COMPACT"
11	900214	SCREW TE M 14x55 - 8.8	22	401440	STICKER "DUAL 12 GOLD"
12	420166	STANDARD FRAME cm 100	22	400607	R14 ADHESIVE
12	420059	STANDARD FRAME cm 150	22	400517	STICKER "PS14"
12	420060	STANDARD FRAME cm 200	22	402220	STICKER "BABY TRIUM"
12	420061	STANDARD FRAME cm 250	23	905408	NUT M 22x1,5 (MEDIUM) MB
12	420062	STANDARD FRAME cm 300	24	907012	GROWER WASH. REINF 22
13	992001	22 PIN - 1° CAT			
14	500061	STANDARD FRAME cm 100			
14	500062	STANDARD FRAME cm 150			
14	500063	STANDARD FRAME cm 200			
14	500064	STANDARD FRAME cm 250			
14	500105	STANDARD FRAME cm 300			
15	400404	STICKER C & M 245x60			
16	400653	STICKER - USER'S MANUAL			
17	400655	STICKER - FALLING RISK			
18	400762	STICKER "LINKAGE POINTS"			
19	400644	SERIAL NUMBER PLATE			

STANDARD FRAME cm 100-300



REINFORCED FRAME cm 150-300

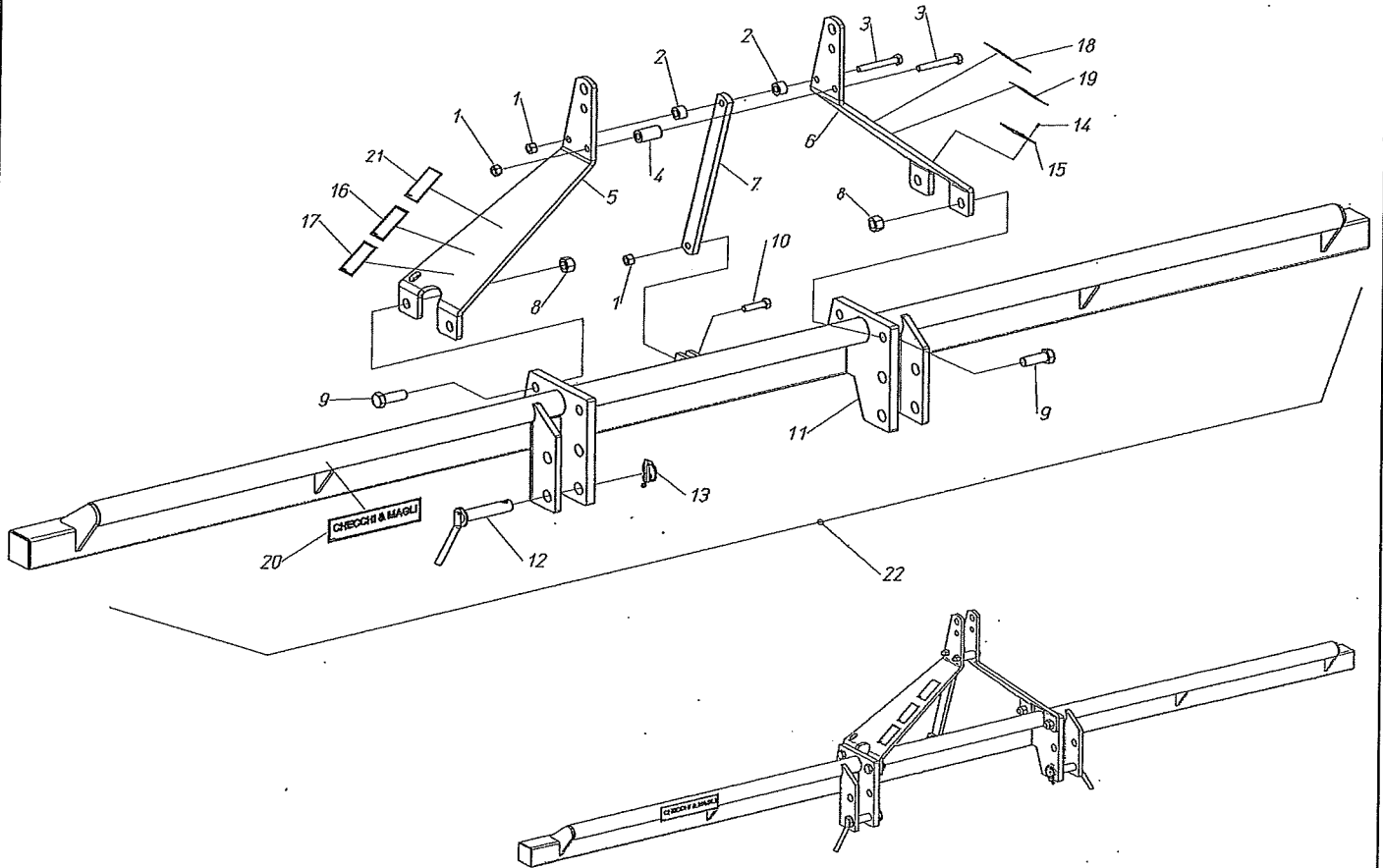
70102006-007-011



Pos.	Code	Description	Pos.	Code	Description
1	905008	NUT M 14 (HIGH) 6S	17	401440	STICKER "DUAL 12 GOLD"
2	400168	SPACER 15 x 30 x 19,5	17	402220	STICKER "BABY TRIUM"
3	900223	SCREW TE M 14x100 - 8.8	18	400654	STICKER - MAINTENANCE
4	400059	SPACER 15 x 30 x 54	19	400762	STICKER "LINKAGE POINTS"
5	400221	RIGHT_ 3RD POINT LINKAGE FOR REINFORCED FRAME	20	400644	SERIAL NUMBER PLATE
6	400642	LEFT_ 3RD POINT LINKAGE REINFORCED FRAME	21	941300	RIVET D 2,9x7 UNI7346 A
7	400166	THIRD POINT TIE ROD	22	400404	STICKER C & M 245X60
8	905112	NUT M22 (MEDIUM) 6S	23		REINFORCED FRAME cm 150
9	902351	SCREW TE M22x60 - 8.8	23	500055	REINFORCED FRAME cm 200
10	900214	SCREW TE M 14x55 - 8.8	23	500056	REINFORCED FRAME cm 250
11	420398	REINFORCED FRAME cm 150	23	500057	REINFORCED FRAME cm 300
11	420152	REINFORCED FRAME cm 200			
11	420153	REINFORCED FRAME cm 250			
11	420154	REINFORCED FRAME cm 300			
12	907014	GROWER WASHER 27			
13	905515	NUT M27x1,5 (MEDIUM) 6S			
14	992010	PIN 3rd POINT 28/28 (M27x1,5)			
15	400653	STICKER - USER'S MANUAL			
16	400655	STICKER - FALLING RISK			
17	400772	STICKER "AL"			
17	401560	STICKER - TOP 24			
17	400326	STICKER "WOLF"			
17	401261	TRIUM STICKER			
17	400167	ADHESIVE TEX			
17	400257	FOXDRIVE ADHESIVE			
17	400607	R14 ADHESIVE			
17	400077	FOX ADHESIVE			
17	402031	STICKER "BABY"			
17	401692	STICKER "UNITRIUM"			

REINFORCED FRAME cm 150-300

70102006-07-08-12-15-19-40-41-53



REINFORCED FRAME cm 200-600 D.P.

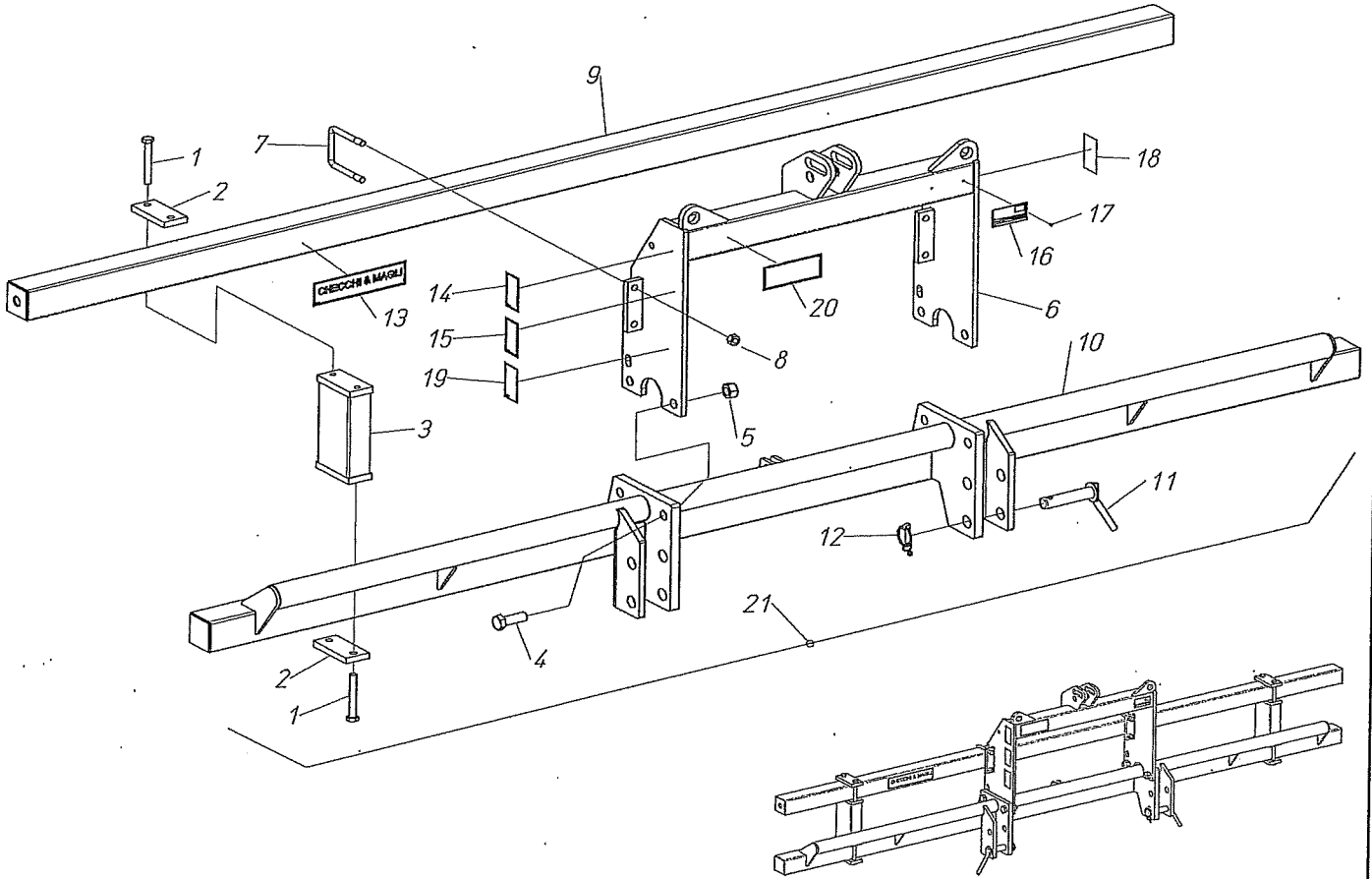
18-03-2013



Pos.	Code	Description	Pos.	Code	Description
1	905008	NUT M 14 (HIGH) 6S	18	400257	FOXDRIVE ADHESIVE
2	400168	SPACER 15 x 30 x 19,5	18	400607	R14 ADHESIVE
3	900223	SCREW TE M 14x100 - 8.8	18	400077	FOX ADHESIVE
4	400059	SPACER 15 x 30 x 54	18	402031	STICKER "BABY"
5	400221	RIGHT_3RD POINT LINKAGE FOR REINFORCED FRAME	18	401692	STICKER "UNITRIUM"
6	400642	LEFT_3RD POINT LINKAGE REINFORCED FRAME	18	401440	STICKER "DUAL 12 GOLD"
7	400166	THIRD POINT TIE ROD	18	402220	STICKER "BABY TRIUM"
8	905112	NUT M22 (MEDIUM) 6S	19	400654	STICKER - MAINTENANCE
9	902351	SCREW TE M22x60 - 8.8	20	400404	STICKER C & M 245X60
10	900214	SCREW TE M 14x55 - 8.8	21	400762	STICKER "LINKAGE POINTS"
11	421779	REINFORCED FRAME cm 200 D.P.	22		REINFORCED FRAME cm 200
11	421831	REINFORCED FRAME cm 250 D.P.	22	500056	REINFORCED FRAME cm 250
11	421703	REINFORCED FRAME cm 300 D.P.	22	500057	REINFORCED FRAME cm 300
11	421699	REINFORCED FRAME cm 350 D.P.	22	500058	REINFORCED FRAME cm 350
11	421700	REINFORCED FRAME cm 400 D.P.	22	500059	REINFORCED FRAME cm 400
11	421685	REINFORCED FRAME cm 450 D.P.	22	500543	COMPLETE REINFORCED FRAME cm 450
11	421704	REINFORCED FRAME cm 500 D.P.	22	500544	COMPLETE REINFORCED FRAME cm 500
11	421705	REINFORCED FRAME cm 550 D.P.	22		REINFORCED FRAME cm 550
11	421706	REINFORCED FRAME cm 600 D.P.	22		REINFORCED FRAME cm 600
12	420953	PIN D.28x130 WITH LEVER			
13	983053	RELEASE THORN D.10+RUBBER TIE ROD			
14	941300	RIVET D 2,9x7 UNI7346 A			
15	400644	SERIAL NUMBER PLATE			
16	400653	STICKER - USER'S MANUAL			
17	400655	STICKER - FALLING RISK			
18	401560	STICKER - TOP 24			
18	400326	STICKER "WOLF"			
18	401261	TRIUM STICKER			
18	400167	ADHESIVE TEX			

REINFORCED FRAME cm 200-600 D.P.



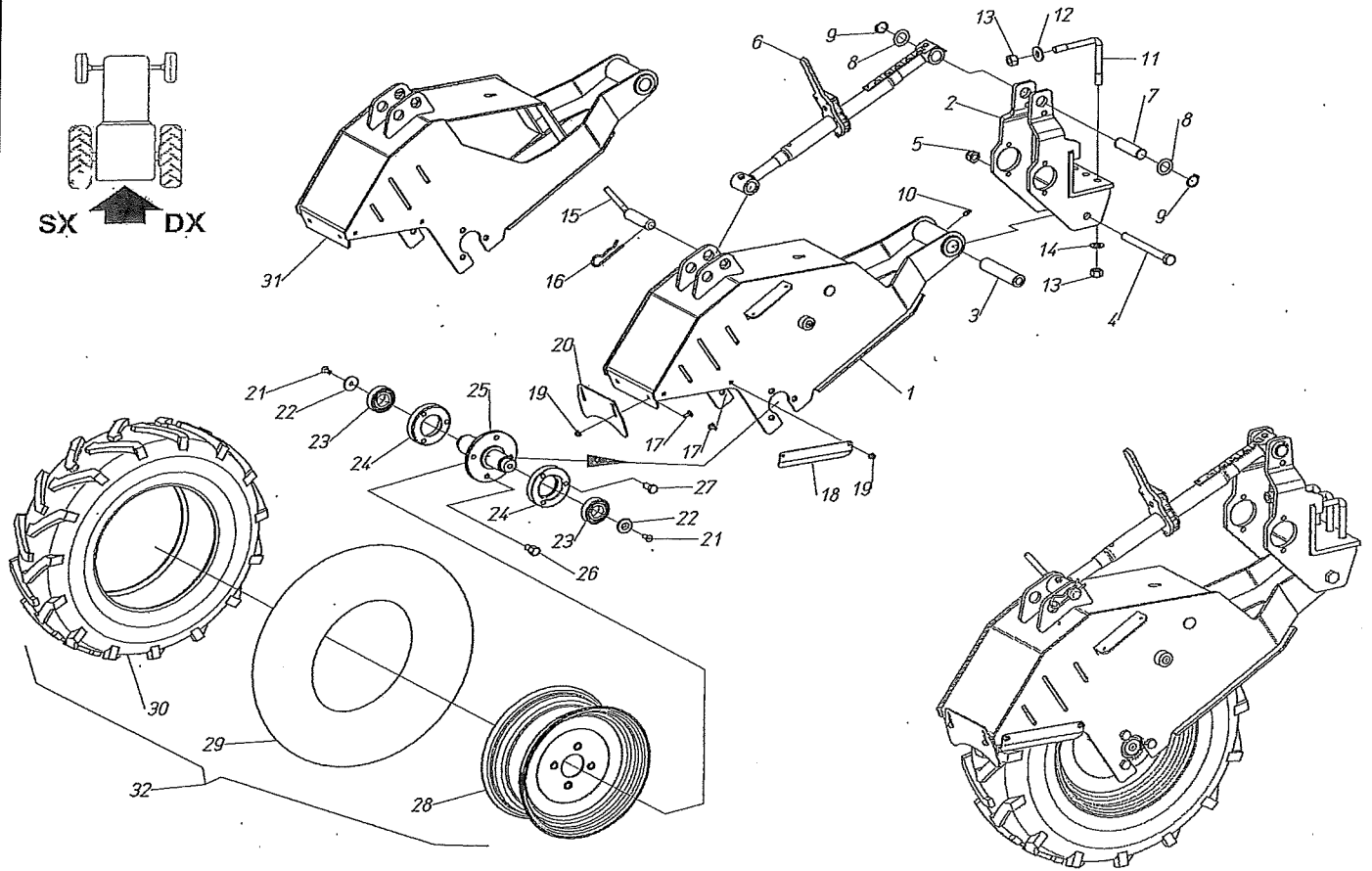
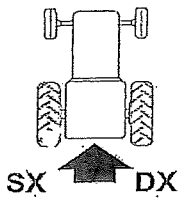


EXTRA REINFORCED FRAME cm 200-700 D.P.

70102035-36-37-38-42-43-44-45-47-48-49

Pos. Code	Description	Pos. Code	Description	Pos. Code	Description
1	900224 SCREW TE M14x110 - 8.8	10	421708 REINFORCED FRAME cm 700 D.P.	21	500742 "EXTRA" REINF. FRAME cm 600
2	402200 PLATE 60x15x130 (2 HOLES D.15)	11	420953 PIN D.28x130 WITH LEVER	21	500722 "EXTRA" REINF. FRAME cm 650
3	421639 LATERAL SUPPORT REINF.FRAME	12	983053 RELEASE THORN D.10+R.TIE ROD	21	500743 "EXTRA" REINF. FRAME cm 700
4	902351 SCREW TE M22x60 - 8.8	13	400404 STICKER C & M 245X60		
5	905112 NUT M22 (MEDIUM) 6S	14	400653 STICKER - USER'S MANUAL		
6	421188 TOWER FOR DOUBLE TUB.FRAME	15	400655 STICKER - FALLING RISK		
7	400041 "U" BOLT M 14 (Q.80)	16	400644 SERIAL NUMBER PLATE		
8	905008 NUT M 14 (HIGH) 6S	17	941300 RIVET D.2,9x7 UNI7346 A		
9	420091 REAR FRAME cm 200	18	400654 STICKER - MAINTENANCE		
9	420146 REAR FRAME cm 250	19	400762 STICKER "LINKAGE POINTS"		
9	420092 REAR FRAME cm 300	20	401560 STICKER - TOP 24		
9	420147 REAR FRAME cm 350	20	400326 STICKER "WOLF"		
9	420270 REAR FRAME cm 400	20	401261 TRIUM STICKER		
9	421230 REAR FRAME cm 450	20	400167 ADHESIVE TEX		
9	421231 REAR FRAME cm 500	20	400257 FOXDRIVE ADHESIVE		
9	421232 REAR FRAME cm 550	20	400607 R14 ADHESIVE		
9	421612 REAR FRAME cm 600	20	400077 FOX ADHESIVE		
9	421690 REAR FRAME cm 650	20	402031 STICKER "BABY"		
9	421724 REAR FRAME cm 700	20	401692 STICKER "UNITRIUM"		
10	421779 REINFORCED FRAME cm 200 D.P.	20	401440 STICKER "DUAL 12 GOLD"		
10	421831 REINFORCED FRAME cm 250 D.P.	20	402220 STICKER "BABY TRIUM"		
10	421703 REINFORCED FRAME cm 300 D.P.	21	REINFORCED FRAME cm 200		
10	421699 REINFORCED FRAME cm 350 D.P.	21	REINFORCED FRAME cm 250		
10	421700 REINFORCED FRAME cm 400 D.P.	21	500736 "EXTRA" REINF. FRAME cm 300		
10	421685 REINFORCED FRAME cm 450 D.P.	21	500737 "EXTRA" REINF. FRAME cm 350		
10	421704 REINFORCED FRAME cm 500 D.P.	21	500738 "EXTRA" REINF. FRAME cm 400		
10	421705 REINFORCED FRAME cm 550 D.P.	21	500739 "EXTRA" REINF. FRAME cm 450		
10	421706 REINFORCED FRAME cm 600 D.P.	21	500740 "EXTRA" REINF. FRAME cm 500		
10	421707 REINFORCED FRAME cm 650 D.P.	21	500741 "EXTRA" REINF. FRAME cm 550		





500798 - EXTRANARROW FORK NON DRIVING WHEEL

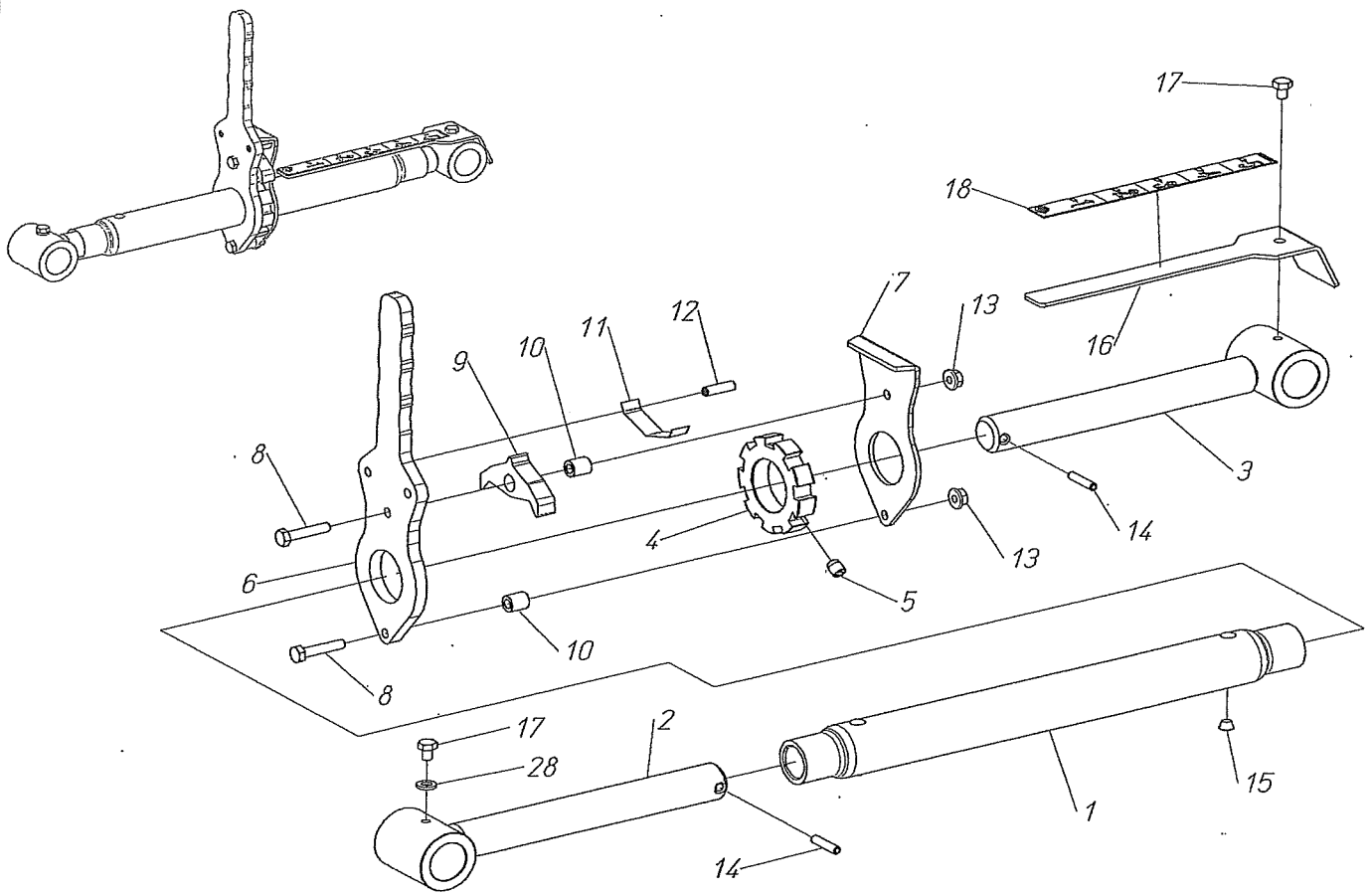
60204211

25-06-2014



Pos.	Code	Description	Pos.	Code	Description
1	422006	EXTRANARROW REINF. RIGHT FORK - INS. 185	30	914101	TYRE 6,5-80-12 TM KT
2	421840	EXTRA NARROW FORK SUPPORT - INS. 185	31	422007	EXTRANARROW REINF. LEFT FORK - INS. 185
3	402112	SPACER 16x30x129	32	914078	COMPLETE WHEEL 6,5/80-12 TM KING TYRE 4PR
4	902264	SCREW TE M 16x170 - 8.8			
5	906109	NUT ATB M 16 (LOW) 6.8			
6	500730	LIGHT DUTY WHEEL ADJUST. RATCHET			
7	401670	PIN D25X86 (2 SEEGER INS. 78)			
8	400256	STEEL WASHER 25 x 40 x 0,5			
9	940505	SEEGER RETAINING RING E 25			
10	923002	NIPPLE M8 ROUND/STRAIGHT			
11	400042	L BOLT M 14 (Q.80)			
12	907308	FLAT WASHER 14x35x4 - R40			
13	905008	NUT M 14 (HIGH) 6S			
14	907108	FLAT WASHER 14 - R40			
15	421220	PIN D.25X85 WITH LEVER			
16	941202	SPRING COTTER PIN			
17	903006	SCREW TTQS M6x16 - 4.6			
18	402296	SCRAPER FOR DRIVE WHEEL OF GRASP STRAPLE			
19	904963	NUT M 6 (FL/ZIG) 6.8			
20	402494	CENTRAL SCRAPER - EXTRA NARROW FORK			
21	904108	SCREW TSEI M 8x20 - 10.9			
22	400280	WASHER DISTRIBUTOR			
23	910109	BEARING 2RS 6206 (30- 62-16)			
24	402080	BEARING SUPPORT EXTRA NARROW			
25	421977	FLANGED SHAFT NON DRIVING WHEEL			
26	402196	WHEELS SCREW (M 12X15)			
27	902174	SCREW TE M 12x25 - 8.8			
28	914144	RIM 5J12 4F FIAT + 22 NARROW BLAK			
29	914102	TUBE 6,5-80-12			

500798 - EXTRANARROW FORK NON DRIVING WHEEL



500730 - LIGHT RATCHET TIEROD

60224075

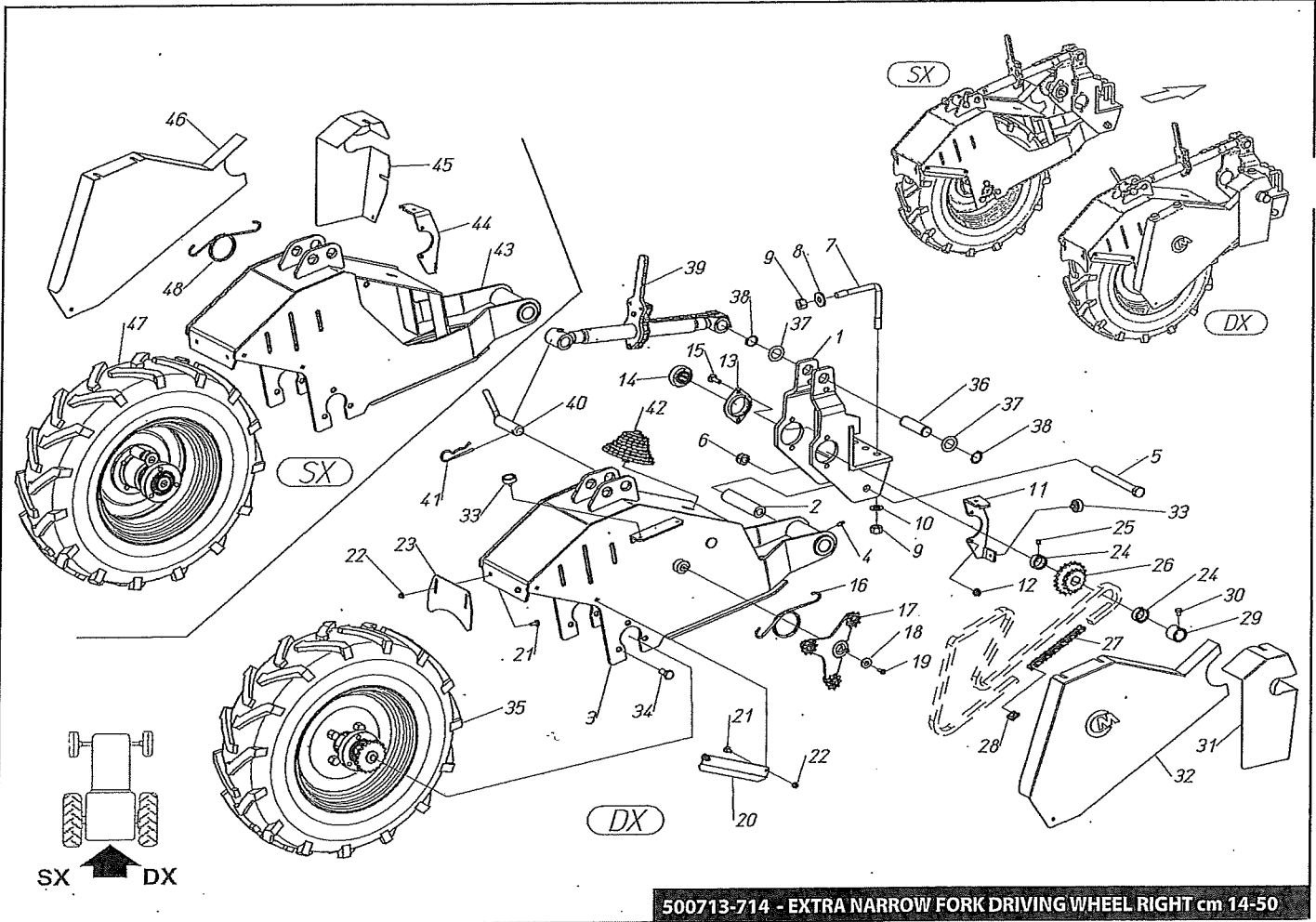
03-03-2014

Checcchi & Magli

Pos.	Code	Description
1	421571	LIGHT RATCHET TIE ROD BODY L=352
2	421873	SCREW M24X187 RIGHTBUSH 25,5X40X50 LIGHT RAT.
3	421874	SCREW M24X187 LEFT BUSH 25,5X40X50 LIGHT RAT.
4	402075	COGGED WHEEL - LIGHT RATCHET
5	904001	GRUB-SCREW M 8x10 - 12.9
6	402484	(SHAPED) LEVER FOR LIGHT RATCHET
7	402485	(SHAPED) PLATE FOR LIGHT RATCHET
8	902073	SCREW TE M 6x30 - 8.8
9	402555	RATCHET FOR TIE ROD - HOLE D.11,25
10	402087	SPACER 6x11x12,5
11	401674	SPRING FOR RATCHET
12	941011	RELEASE THORN 6x20 SPIROL
13	904963	NUT M 6 (FL/ZIG) 6.8
14	941007	RELEASE THORN 5x24 SPIROL
15	983114	PET CAP Ø7,5X4,5
16	402556	ADJUSTMENT BAR HOLE D.6,5 - LIGHT RATCHET TIE ROD
17	902441	SCREW TE M 6x8 - 8.8
18	402429	STICKER - DEPTH 1-5
19	907104	FLAT WASHER 6 - R40

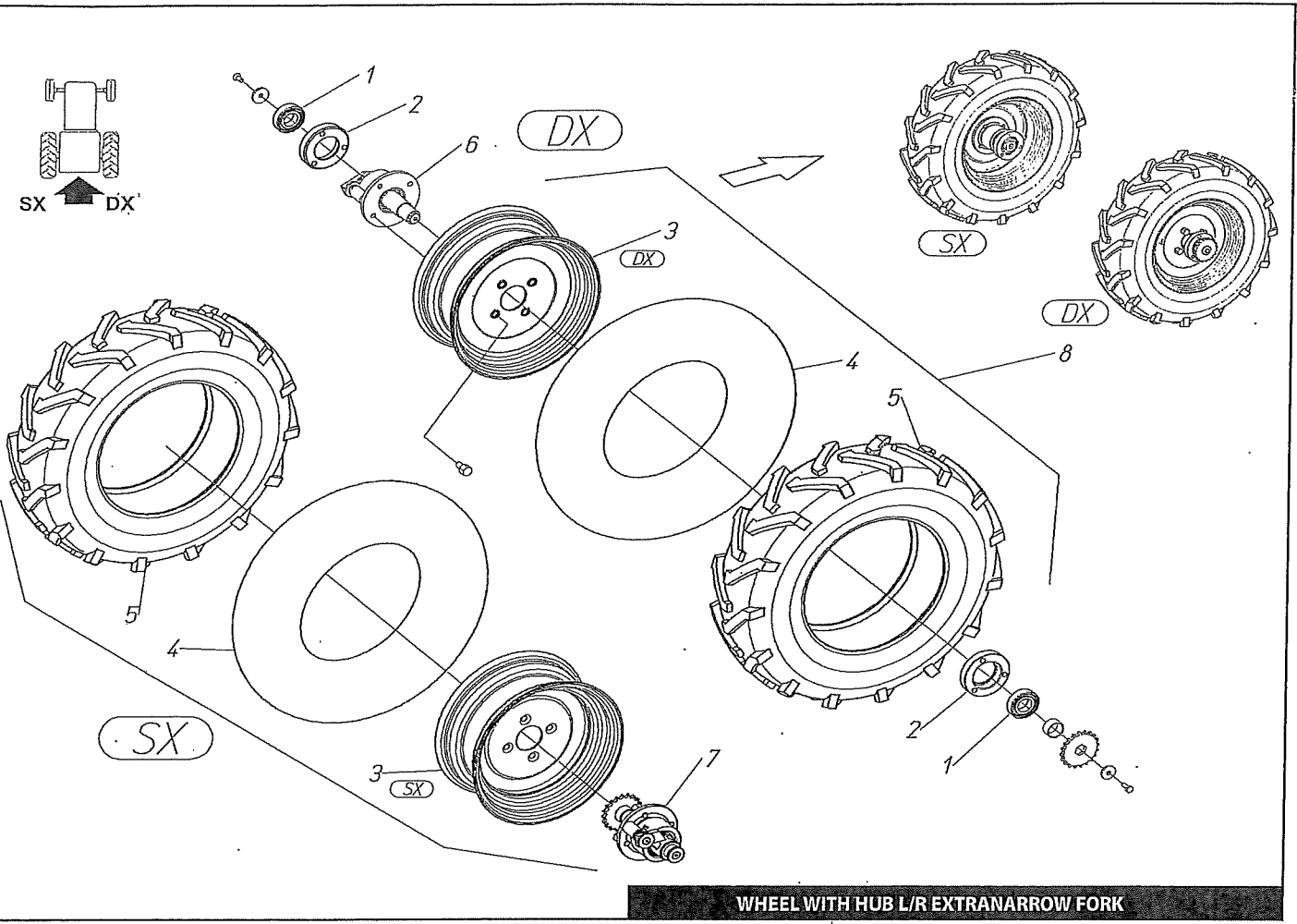
500730 - LIGHT RATCHET TIEROD

60204201-202



500713-714 - EXTRA NARROW FORK DRIVING WHEEL RIGHT cm 14-50

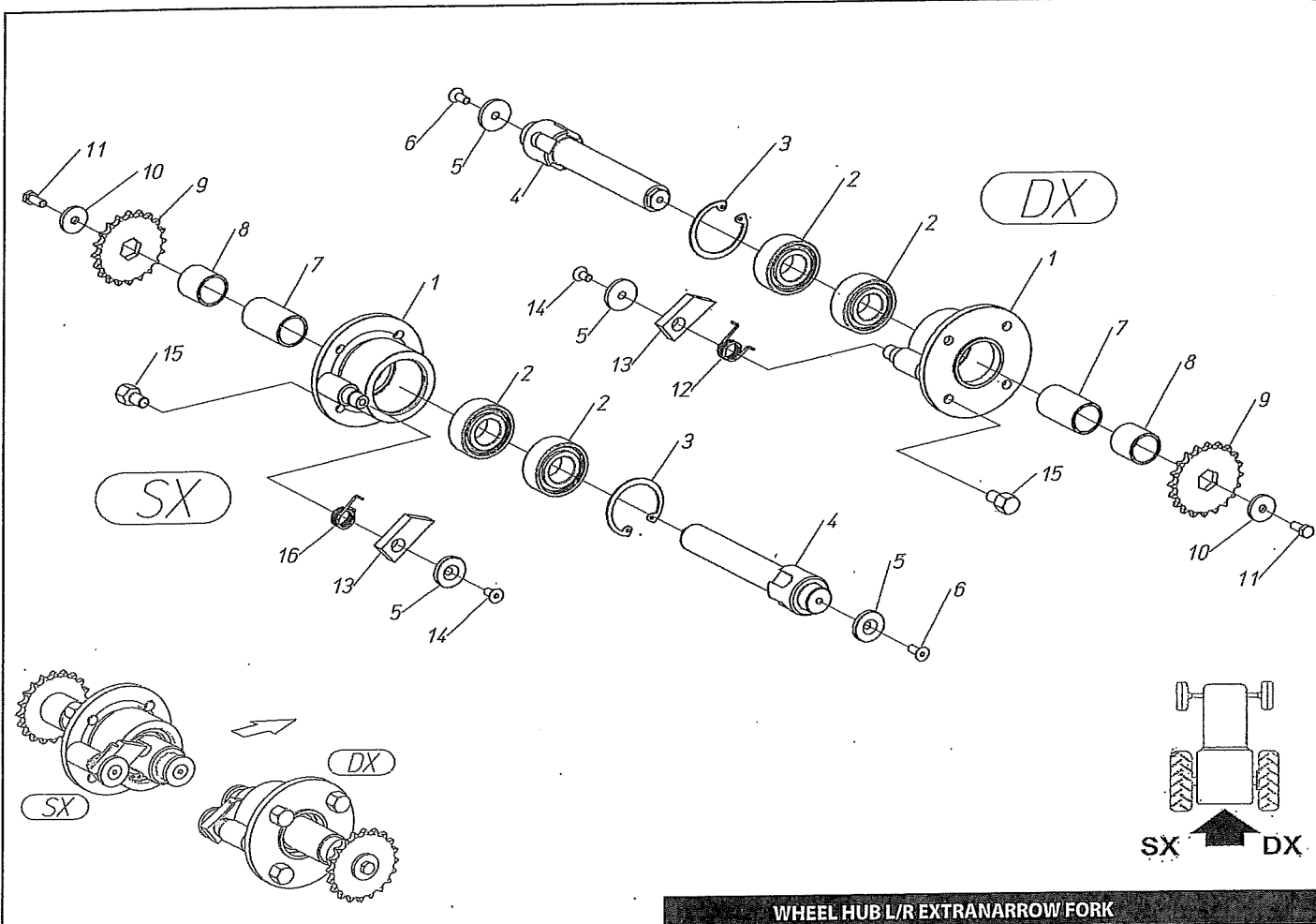
Pos.	Code	Description	Pos.	Code	Description
1	421840	EXTRA NARROW FORK SUPPORT - INS. 185	30	902475	SCREW TE M8x10 - 8.8
2	402112	SPACER 16x30x129	31	402488	RIGHT FRONT COVER - EXTRA NARROW FORK
3	422006	EXTRANARROW REINF. RIGHT FORK - INS. 185	32	421851	RIGHT REAR COVER - EXTRA NARROW FORK
4	923002	NIPPLE M8 ROUND/STRAIGHT	33	983038	SHAGREENED KNOB - ex 400183
5	902264	SCREW TE M 16x170 - 8.8	34	902174	SCREW TE M 12x25 - 8.8
6	906109	NUT ATB M 16 (LOW) 6.8	35	SEE TAB.	RIGHT WHEEL WITH NUB
7	400042	L BOLT M 14 (Q.80)	36	401670	PIN D25X86 (2 SEEGER'S INS. 78)
8	907308	FLAT WASHER 14x35x4 - R40	37	400256	STEEL WASHER 25 x 40 x 0,5
9	905008	NUT M 14 (HIGH) 6S	38	940505	SEEGER RETAINING RING E 25
10	907108	FLAT WASHER 14 - R40	39	500730	LIGHT DUTY WHEEL ADJUST. RATCHET
11	402492	FRONT COVER SUPPORT - EXTRANARROW.D.W.	40	421220	PIN D.25X85 WITH LEVER
12	904964	NUT M 8 (FL/ZIG) 6.8	41	941202	SPRING COTTER PIN
13	913050	HEXAG.BEARING FLANGE 22 PAIR	42	SEE TAB.	PINIONS SET FOXDRIVE
14	913006	BEARING KRRB 205 EXAGON 22	42	SEE TAB.	PINIONS SET WOLF
15	902584	SCREW TTQS M 8x30 - 4.6	42	SEE TAB.	PINIONS SET R14
16	800017	RIGHT TORSION SPRING 4 DRIV. WHEEL	42	SEE TAB.	PINIONS SET TRIUM-GOLD-TOP-BEST-BABY
17	SEE TAB.	CHAIN TENSIONER EXTRANARROW FORK INS.185	43	422007	EXTRANARROW REINF. LEFT FORK - INS. 185
18	401972	WASHER 6,2x25x4 (FLARED)	44	402493	LEFT EXTRANARROW FORK FRONT COVER SUPPORT
19	904156	SCREW TSEI M 6x22 - 10.9	45	402489	LEFT FRONT COVER EXTRANARROW FORK
20	402296	SCRAPER FOR DRIVE WHEEL OF GRASP STRAPLE	46	421852	LEFT REAR COVER - EXTRA NARROW FORK
21	903006	SCREW TTQS M6x16 - 4.6	47	SEE TAB.	LEFT WHEEL WITH NUB
22	904963	NUT M 6 (FL/ZIG) 6.8	48	800016	LEFT TORSION SPRING 4 DRIV. WHEEL
23	402494	CENTRAL SCRAPER - EXTRA NARROW FORK			
24	400717	FASTENING RING 25,5x35 x 15			
25	904001	GRUB-SCREW M 8x10 - 12.9			
26	420442	DOUBLE HEXAGONAL PINION Z 20-14 1/2x5/16			
27	930111	CHAIN 1/2X5/16 STEPS 125 (CZ)			
28	930501	JUNCTION LINK 1/2x5/16 (CZ)			
29	400227	BLOCKING RING 25,5x35x30			



60204201-202

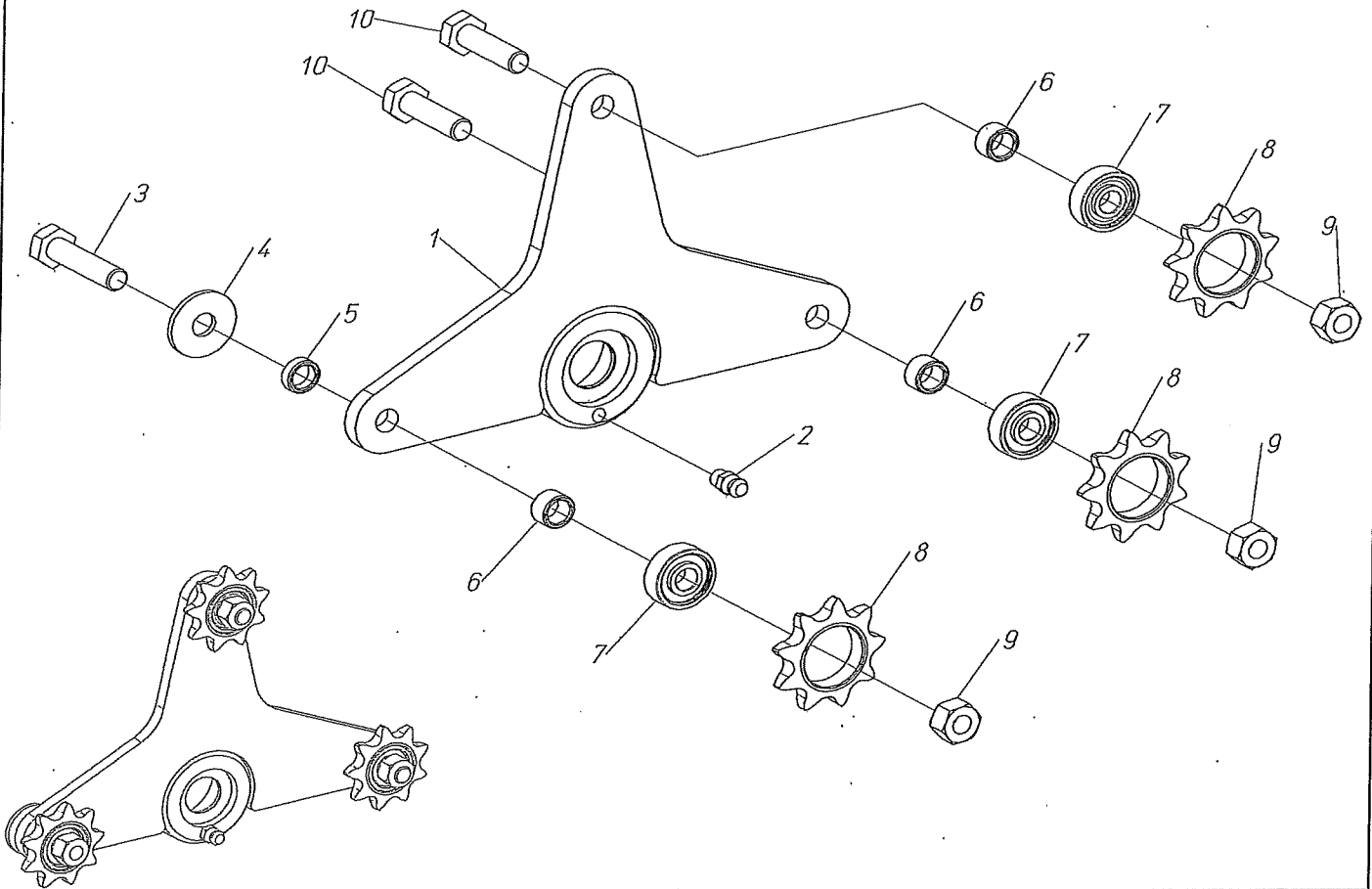
Pos.	Code	Description
1	910109	BEARING 2RS 6206 (30-62-16)
2	402080	BEARING SUPPORT EXTRA NARROW
3	914103 914144	RIM 5J12
4	914102	TUBE 6,5-80-12
5	914101	TYRE 6,5-80-12 TM KT
6	SEE TAB.	RIGHT WHEEL HUB EXTRANARROW FORK
7	SEE TAB.	LEFT WHEEL HUB EXTRANARROW FORK
8	914078	COMPLETE WHEEL 6,5/80-12 TM KING TYRE 4PR

60204203-204



WHEEL HUB L/R EXTRANARROW/FORK

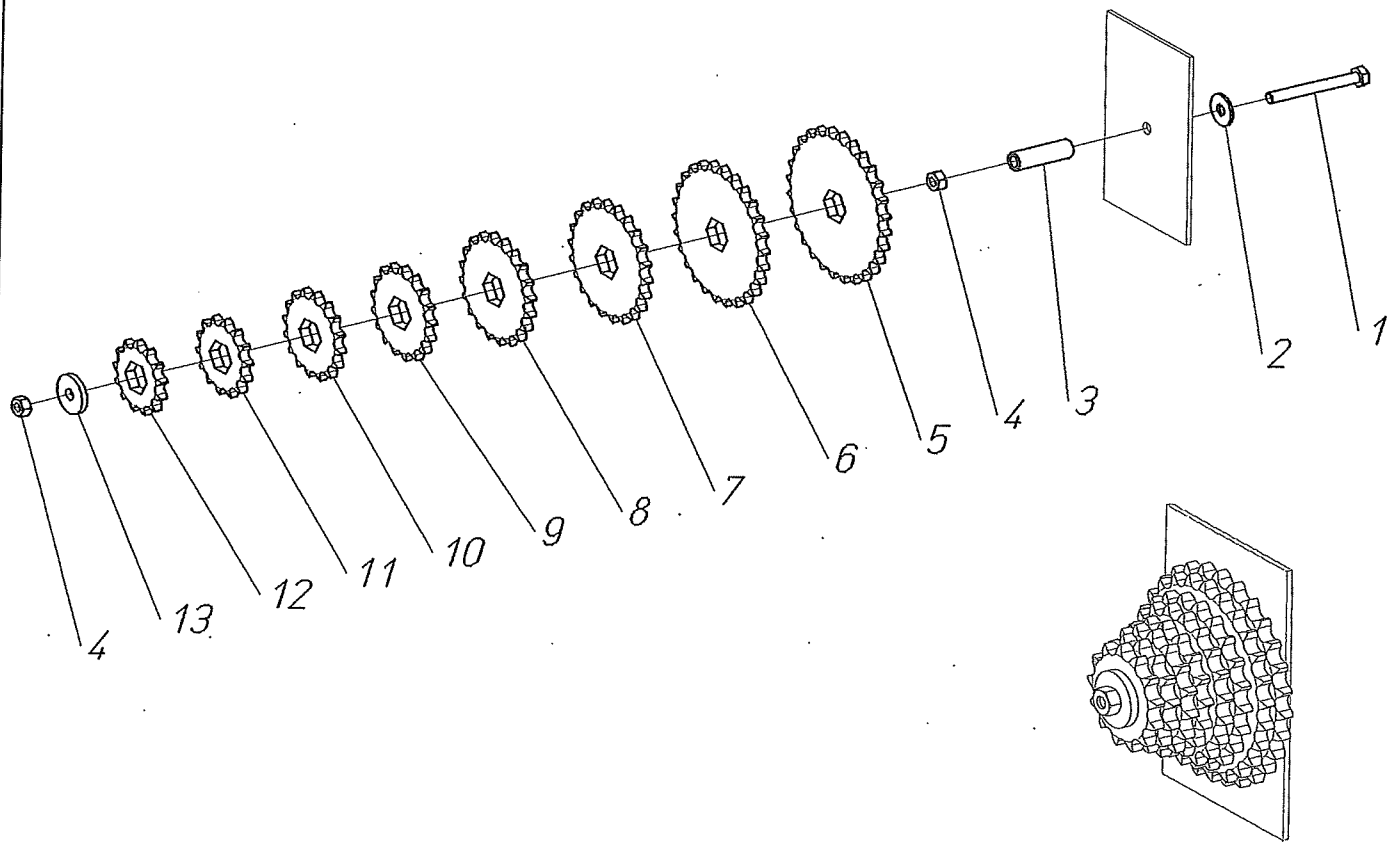
Pos.	Code	Description
1	421223	COMPLETE HUB FOR FORK WHEEL
2	910200	BEARING CONT.OBL.2 COR. 3206B-2RS
3	940009	SEEGER RING I 62
4	402510	DRIVE SHAFT EXTRA NARROW DRIVE WHEEL INT.185
5	400280	WASHER DISTRIBUTOR
6	904108	SCREW TSEI M 8x20 - 10.9
7	402511	SPACER 30 x 36 x 63
8	402512	SPACER 30 x 36 x 35
9	400243	HEXAGONAL PINION Z 20 1/2x5/16
10	907316	FLAT WASHER 8x30x4 - R40
11	902104	SCREW TE M 8x20 - 8.8
12	800002	LEFT SPRING FOR STOPPING
13	400848	STOP FOR SHAFT REINFORCED DRIVE WHEEL
14	904107	SCREW TSEI M 8x16 - 10.9
15	402196	WHEELS SCREW (M 12X15)
16	800001	RIGHT SPRING FOR STOPPING



CHAIN TENSIONER EXTRANARROW FORK

Pos.	Code	Description
1	421839	CHAIN TENSIONER EXTRA NARROW DRIVE WHEEL INT.185
2	923001	NIPPLE M6
3	902108	SCREWTE M 8x35 - 8.8
4	907305	FLAT WASHER 8x24x2 - R40
5	400535	SPACER 8,2 x 12 x 4,5
6	400263	SPACER 8,5 x 12 x 7,5
7	910110	BEARING 2RS 608 (8-22-7)
8	400264	PINION Z 9 1/2x5/16 F.22
9	905005	NUT M 8 (HIGH) 6S
10	902107	SCREWTE M 8x30 - 8.8

70204009

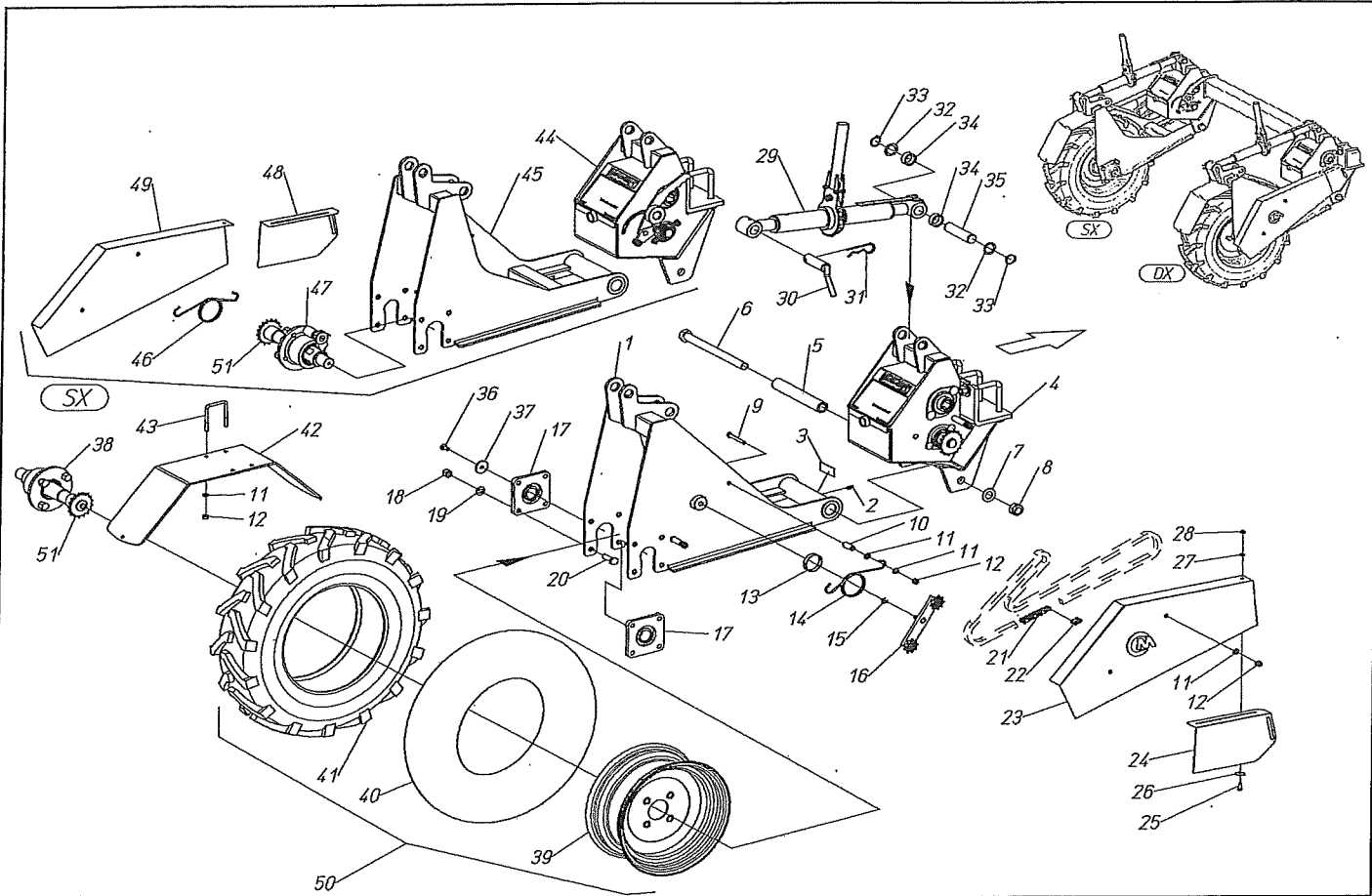


PINIONS SET TRIUM-TOP-GOLD-BEST-BABY

09-10-2013

Pos.	Code	Description
1	900116	SCREW TE M 8x75 - 8.8
2	907305	FLAT WASHER 8x24x2 - R40
3	400228	SPACER 8,5 x 14 x 44 DRIVING WHEEL
4	905105	NUT M 8 (MEDIUM) 6S
5	400665	HEXAGONAL PINION Z 28 1/2x5/16
6	400241	HEXAGONAL PINION Z 26 1/2x5/16
7	400242	HEXAGONAL PINION Z 22 1/2x5/16
8	400243	HEXAGONAL PINION Z 20 1/2x5/16
9	400330	HEXAGONAL PINION Z 17 1/2x5/16
10	400245	HEXAGONAL PINION Z 16 1/2x5/16
11	400246	HEXAGONAL PINION Z 14 1/2x5/16
12	400664	HEXAGONAL PINION Z 13 1/2x5/16
13	907316	FLAT WASHER 8x30x4 - R40

PINIONS SET TRIUM-TOP-GOLD-BEST-BABY



510121 - NARROW FORK DRIV. WHEEL-RIGHT RAPID SHIFT 14-50

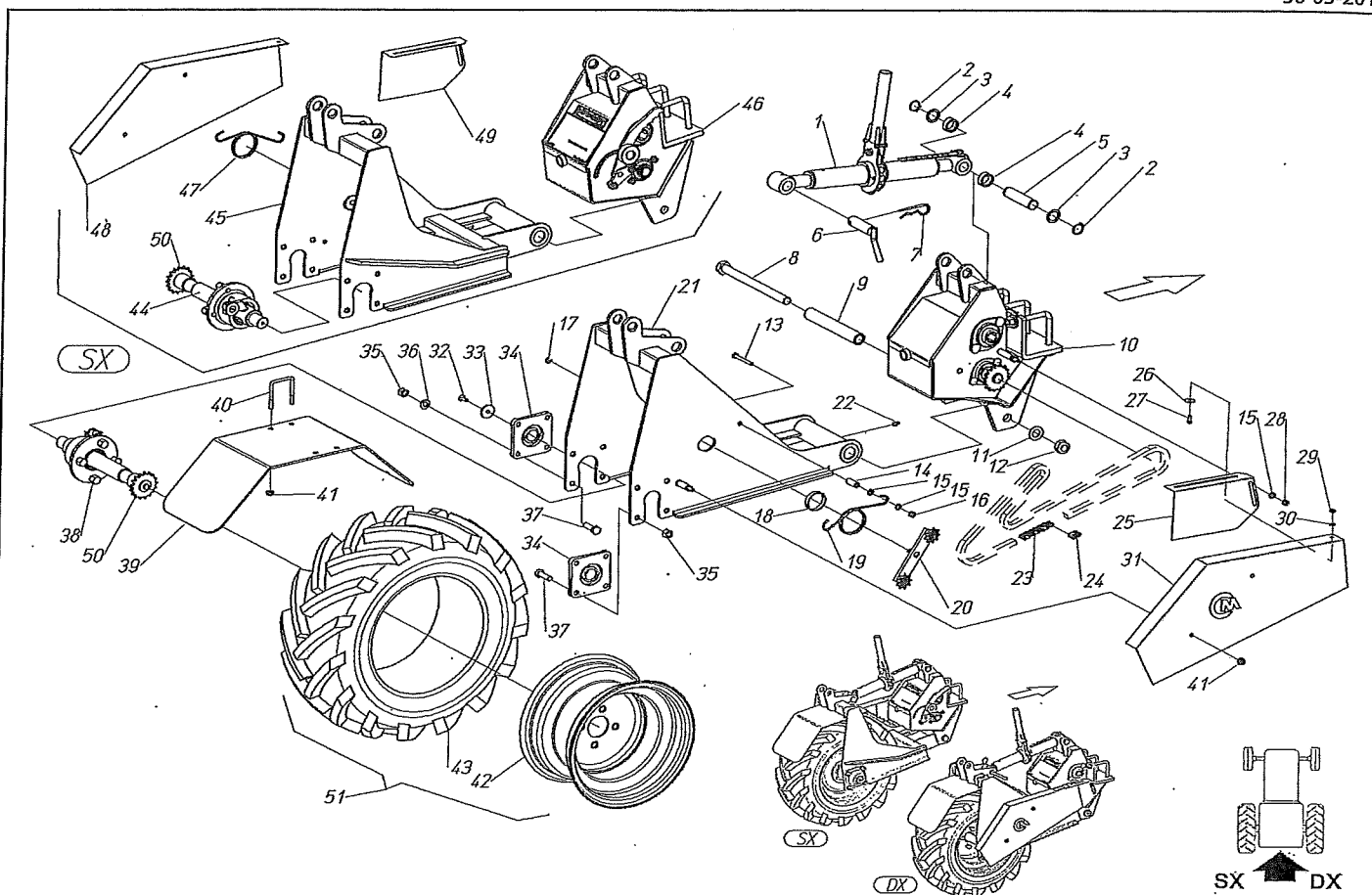
510122 - NARROW FORK DRIV. WHEEL-LEFT RAPID SHIFT 14-50

Pos.	Code	Description	Pos.	Code	Description
1	421233	RIGHT FORK - NARROW DRIVING WHEEL	29	500730	LIGHT DUTY WHEEL ADJUST. RATCHET
2	923002	NIPPLE M8 ROUND/STRAIGHT	30	421220	PIN D.25X85 WITH LEVER
3	400690	STICKER - GREASE	31	941202	SPRING COTTER PIN
4	SEE TAB.	RIGHT RAPIDSHIFT GEARBOX	32	907319	FLAT WASHER 25x35x1 - R40
5	401683	BUSH 20x30x207	33	940505	SEEGER RETAINING RING E 25
6	900346	SCREW TE M 20x250 - 8.8	34	400935	SPACER 25 x 35 x 14
7	907111	FLAT WASHER 20 - R40	35	402123	PIN D.25X108 - 2.SEEGER INSIDE100
8	906111	NUT ATB M 20 (LOW) 6.8	36	904108	SCREW TSEI M 8x20 - 10.9
9	900114	SCREW TE M 8x65 - 8.8	37	400280	WASHER DISTRIBUTOR
10	400097	SPACER 8,5 x 14 x 35	38	500656	COMPLETE RIGHT HUB-RAPID S. NARROW FORK WHEEL
11	907105	FLAT WASHER 8 - R40	39	914103	RIM 5J12
12	905005	NUT M 8 (HIGH) 6S	40	914102	TUBE 6,5-80-12
13	401699	BUSHING - SPRING CONTROL	41	914101	TYRE 6,5-80-12 TM KT
14	800017	RIGHT TORSION SPRING 4 DRIV. WHEEL	42	401700	WHEEL PROTECTION - NARROW FORK
15	940527	ELASTIC RING D.8 BENZING	43	400641	U BOLT M 8 l= 59 (Q.50)
16	SEE TAB.	CHAIN TENSIONER FORK DRIVING WHEEL	44	SEE TAB.	LEFT RAPIDSHIFT GEARBOX
17	913008	SUPPORT UCF206 (D.30)	45	421234	LEFT FORK - NARROW DRIVING WHEEL
18	905007	NUT M 12 (HIGH) 6S	46	800016	LEFT TORSION SPRING 4 DRIV. WHEEL
19	907107	FLAT WASHER 12 R40	47	500657	COMPLETE LEFT HUB-RAPID S. NARROW FORK WHEEL
20	900177	SCREW TE M 12x40 - 8.8	48	401698	LEFT UPPER CHAIN COVER
21	930102	CHAIN 1/2X5/16 STEPS 121 (CZ)	49	401681	COVER FOR LEFT FORK DRIV. WHEEL
22	930501	JUNCTION LINK 1/2x5/16 (CZ)	50	914052	TRACTOR WHEEL 6.5/80-12 4PR
23	401680	COVER FOR RIGHT FORK DRIV. WHEEL	51	SEE TAB.	OPTIONAL DISTANCES
24	401697	RIGHT UPPER CHAIN COVER			
25	902468	SCREW TE M 6x16 - 8.8			
26	907304	FLAT WASHER 6x24x2 - R40			
27	907104	FLAT WASHER 6 - R40			
28	906104	NUT ATB M 6 (LOW) 6.8			
29	500658	HEAVY DUTY WHEEL ADJUST. RATCHET			

510121 - NARROW FORK DRIV. WHEEL-RIGHT RAPID SHIFT 14-50

60204181-182

60204171-172



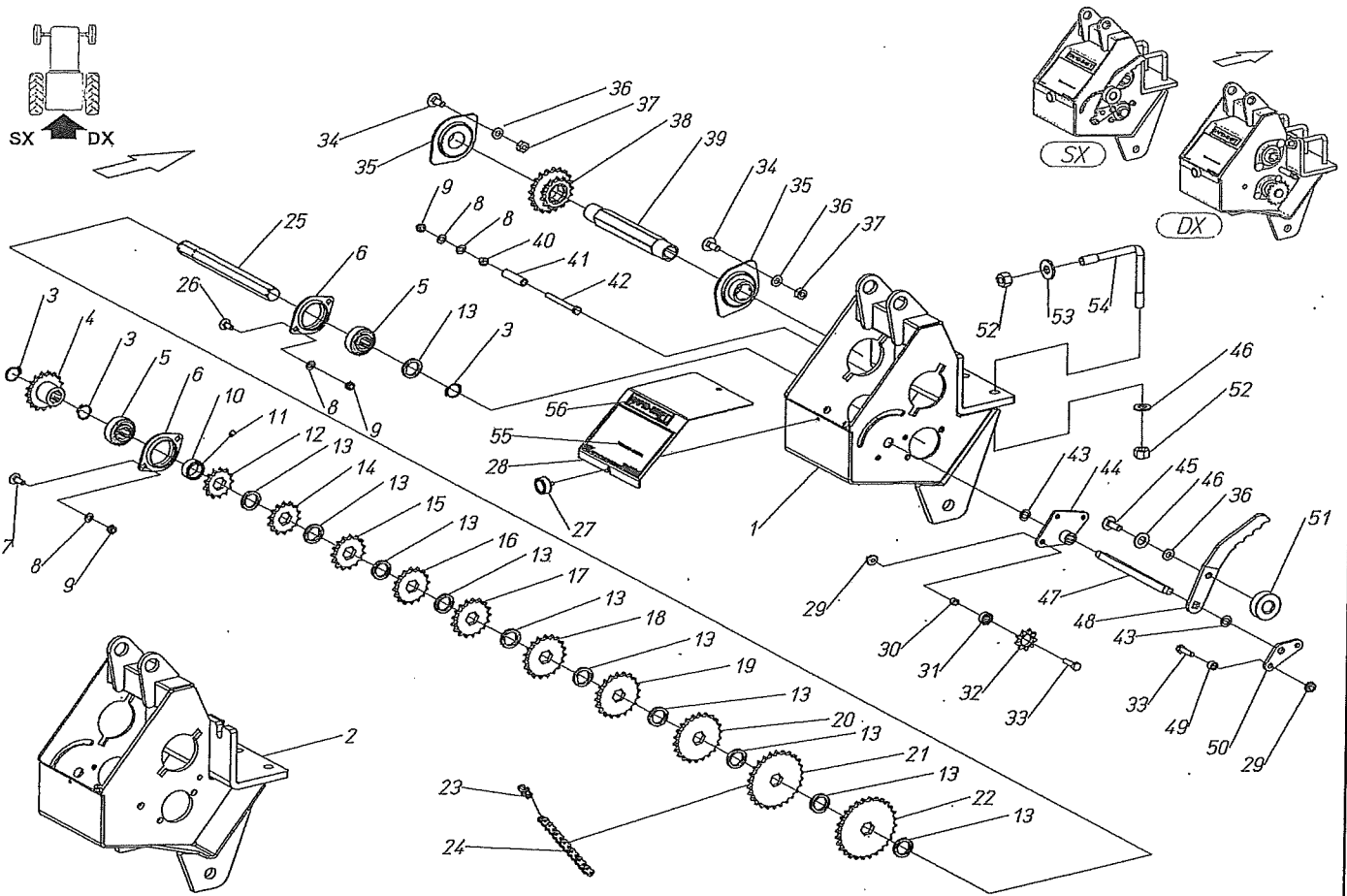
510123 - DRIVING WHEEL-RIGHT R.SHIFT 14-50 WITH LARGE FORK

510124 - DRIVING WHEEL-LEFT R.SHIFT 14-50 WITH LARGE FORK



Pos.	Code	Description	Pos.	Code	Description
1	500658	HEAVY DUTY WHEEL ADJUST.RAT	29	906104	NUT ATB M 6 (LOW) 6.8
1	500730	LIGHT DUTY WHEEL ADJUST. RAT	30	907104	FLAT WASHER 6 - R40
2	940505.	SEEGER RETAINING RING E 25	31	401680	COVER FOR RIGHT FORK DRIV.W.
3	907319	FLAT WASHER 25x35x1 - R40	32	904108	SCREW TSEI M 8x20 - 10.9
4	400935	SPACER 25 x 35 x 14	33	400280	WASHER DISTRIBUTOR
5	402123	PIN D.25X108-2 SEEGER INSIDE100	34	913008	SUPPORT UCF206 (D.30)
6	421220	PIN D.25X85 WITH LEVER	35	905007	NUT M 12 (HIGH) 6S
7	941202	SPRING COTTER PIN	36	907107	FLAT WASHER 12 R40
8	900346	SCREW TE M 20x250 - 8.8	37	900177	SCREW TE M 12x40 - 8.8
9	401683	BUSH 20x30x207	38	500654	HUB-RIGHT LARGE FORK DRIV.W.
10	SEE TAB.	SCATOLA CAMBIO R.S. DX	39	401682	WHEEL PROT. FOR LARGE FORK
11	907111	FLAT WASHER 20 - R40	40	400641	U BOLT M 8 l= 59 (Q.50)
12	906111	NUT ATB M 20 (LOW) 6.8	41	904964	NUT M 8 (FL/ZIG) 6.8
13	900114	SCREW TE M 8x65 - 8.8.	42	914105	RIM 7X12 FIAT FL.SPOST.65MM
14	400097	SPACER 8,5 x 14 x 35	43	914104	TYRE 23,10/50-12 4PR
15	907105	FLAT WASHER 8 - R40	44	500655	HUB-LEFT LARGE FORK DRIV.W.
16	905005	NUT M 8 (HIGH) 6S	45	421217	LEFT FORK_ LARGE DRIV.WHEEL
17	940527	ELASTIC RING D.8 BENZING	46	SEE TAB.	SCATOLA CAMBIO R.S. SX
18	401699	BUSHING - SPRING CONTROL	47	800016	LEFT TORSION SPRING D.4
19	800017	RIGHT TORSION SPRING D.4	48	401681	COVER FOR LEFT FORK DRIV.W.
20	SEE TAB.	CHAIN TENSIONER DRIVING W.	49	401698	LEFT UPPER CHAIN COVER
21	421216	RIGHT FORK-LARGE DRIVING W.	50	SEE TAB.	OPTIONAL DISTANCES R.S.
22	923002	NIPPLE M8 ROUND/STRAIGHT	51	914057	TRACTOR W. 23.10/50-12EST-4PR
23	930102	CHAIN 1/2X5/16 STEPS 121 (CZ)			
24	930501	JUNCTION LINK 1/2x5/16 (CZ)			
25	401697	RIGHT UPPER CHAIN COVER			
26	907304	FLAT WASHER 6x24x2 - R40			
27	902468	SCREW TE M 6x16 - 8.8			
28	906105	NUT ATB M 8 (LOW) 6.8			

510123 - DRIVING WHEEL-RIGHT R.SHIFT 14-50 WITH LARGE FORK

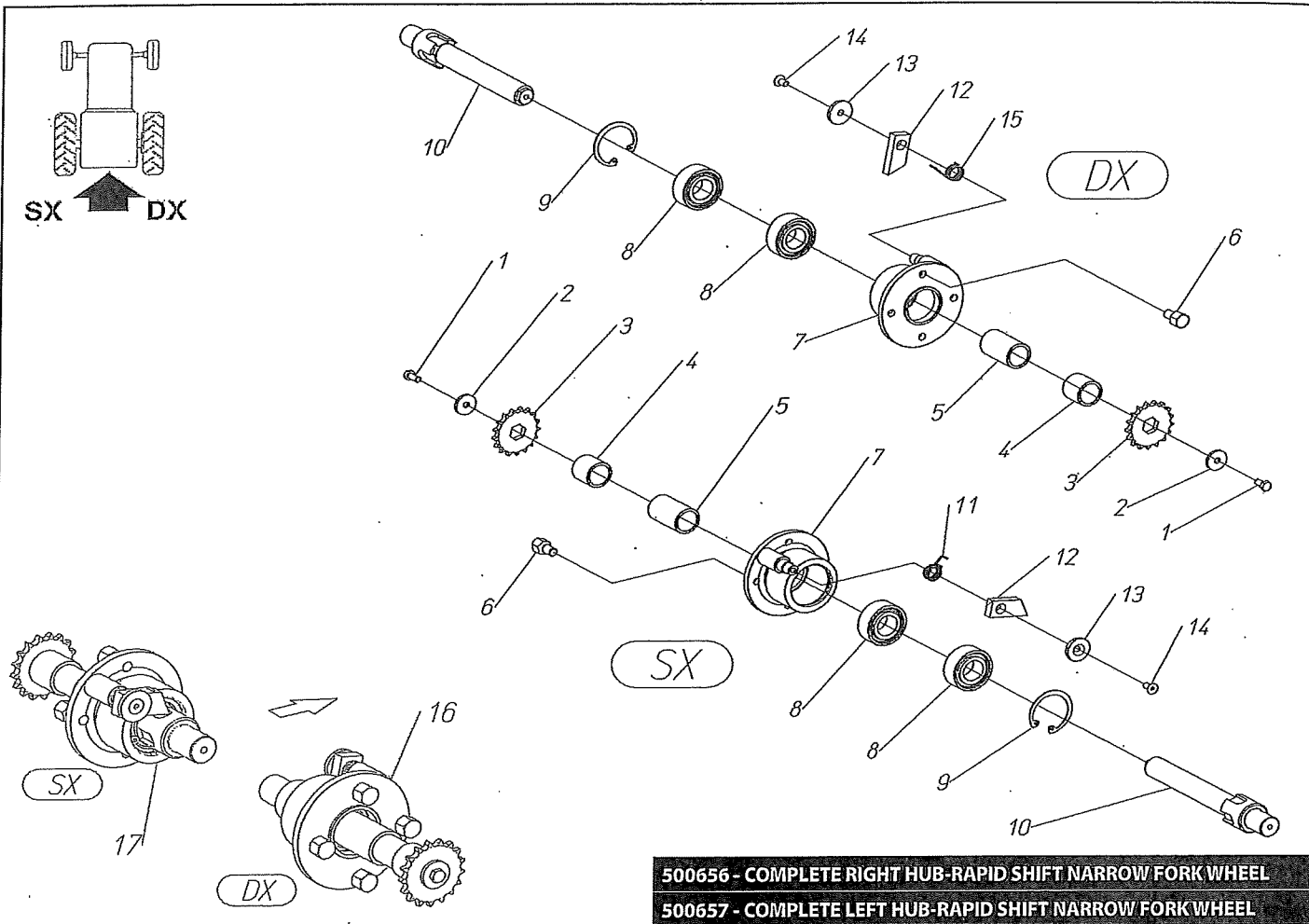


GEARBOX L/R RAPID SHIFT

0204173 / 60204174



Pos.	Code	Description	Pos.	Code	Description
1	421222	LEFT GEARBOX FOR FORK W.	31	910110	BEARING 2RS 608 (8-22-7)
2	421221	RIGHT GEARBOX FOR FORK W.	32	400264	PINION Z 9 1/2x5/16 F.22
3	940515	SEEGER RETAINING RING E 24	33	902107	SCREW TE M 8x30 - 8.8
4	420411	HEXAG. PINION Z 17 1/2x5/16 PIPE	34	902563	BOLT TTQS M10x25 - 4.6
4	SEE TAB.	OPTIONAL DISTANCES R.S.	35	913010	FLANGED SUPPORT D.30
5	913006	BEARING KRRB 205 EXAGON 22	36	907106	FLAT WASHER 10 - R40
6	913050	HEXAG.BEARING FLANGE 22 PAIR	37	905106	NUT M 10 (MEDIUM) 6S
7	902583	BOLT TTQS M 8x25 - 4.6	38	421033	DOUBLE SPROCKET Z 20 - Z 14
8	907105	FLAT WASHER 8 - R40	39	401474	SUPPORTING PIPE DOUB. PINION
9	906105	NUT ATB M 8 (LOW) 6.8	40	905005	NUT M 8 (HIGH) 6S
10	400717	FASTENING RING 25,5x35 x 15	41	400666	SPACER 8 x 14 x 54
11	904001	GRUB-SCREW M 8x10 - 12.9	42	900118	SCREW TE M 8x85 - 8.8
12	400664	HEXAGONAL PINION Z 13 1/2x5/16	43	400882	STEEL WASHER 12,2X20 X1 C70
13	401475	SPACER 25,5 x 35 x 6	44	421031	RAPID SHIFT TENSIONER
14	400246	HEXAGONAL PINION Z 14 1/2x5/16	45	902562	SCREW TTQS M10x30 - 4.8
15	400327	HEXAGONAL PINION Z 15 1/2x5/16	46	907108	FLAT WASHER 14 - R40
16	400245	HEXAGONAL PINION Z 16 1/2x5/16	47	401463	SQUARE RAPID SHIFT
17	400330	HEXAGONAL PINION Z 17 1/2x5/16	48	401486	TENSIONER OPERATING LEVER
18	400231	HEXAGONAL PINION Z 19 1/2x5/16	49	401182	SPACER 8,5 x 14 x 9,5
19	400243	HEXAGONAL PINION Z 20 1/2x5/16	50	401464	ADD. CHAIN TENSIONER SHAFT
20	400242	HEXAGONAL PINION Z 22 1/2x5/16	51	983040	AP-BALL GRIP 50 M10
21	400241	HEXAGONAL PINION Z 26 1/2x5/16	52	905008	NUT M 14 (HIGH) 6S
22	400665	HEXAGONAL PINION Z 28 1/2x5/16	53	907308	FLAT WASHER 14x35x4 - R40
23	930501	JUNCTION LINK 1/2x5/16 (CZ)	54	400042	L BOLT M 14 (Q.80)
24	930045	CHAIN 1/2x5/16 STEPS 47 (CZ)	55	401477	RIGHT SPACING CHART 14-50 R.S.
25	401466	HEXAG. SHAFT R.S. GEAR	55	401481	LEFT SPACING CHART 14-50 R.S.
26	902581	BOLT TTQS M 8x20 - 4.6	56	401576	STICKER "RAPID SHIFT"
27	983038	SHAGREENED KNOB - ex 400183			
28	401684	CLOSING COVER FOR GEARBOX			
29	904964	NUT M 8 (FL/ZIG) 6.8			



500656 - COMPLETE RIGHT HUB-RAPID SHIFT NARROW FORK WHEEL

500657 - COMPLETE LEFT HUB-RAPID SHIFT NARROW FORK WHEEL

60204183-184

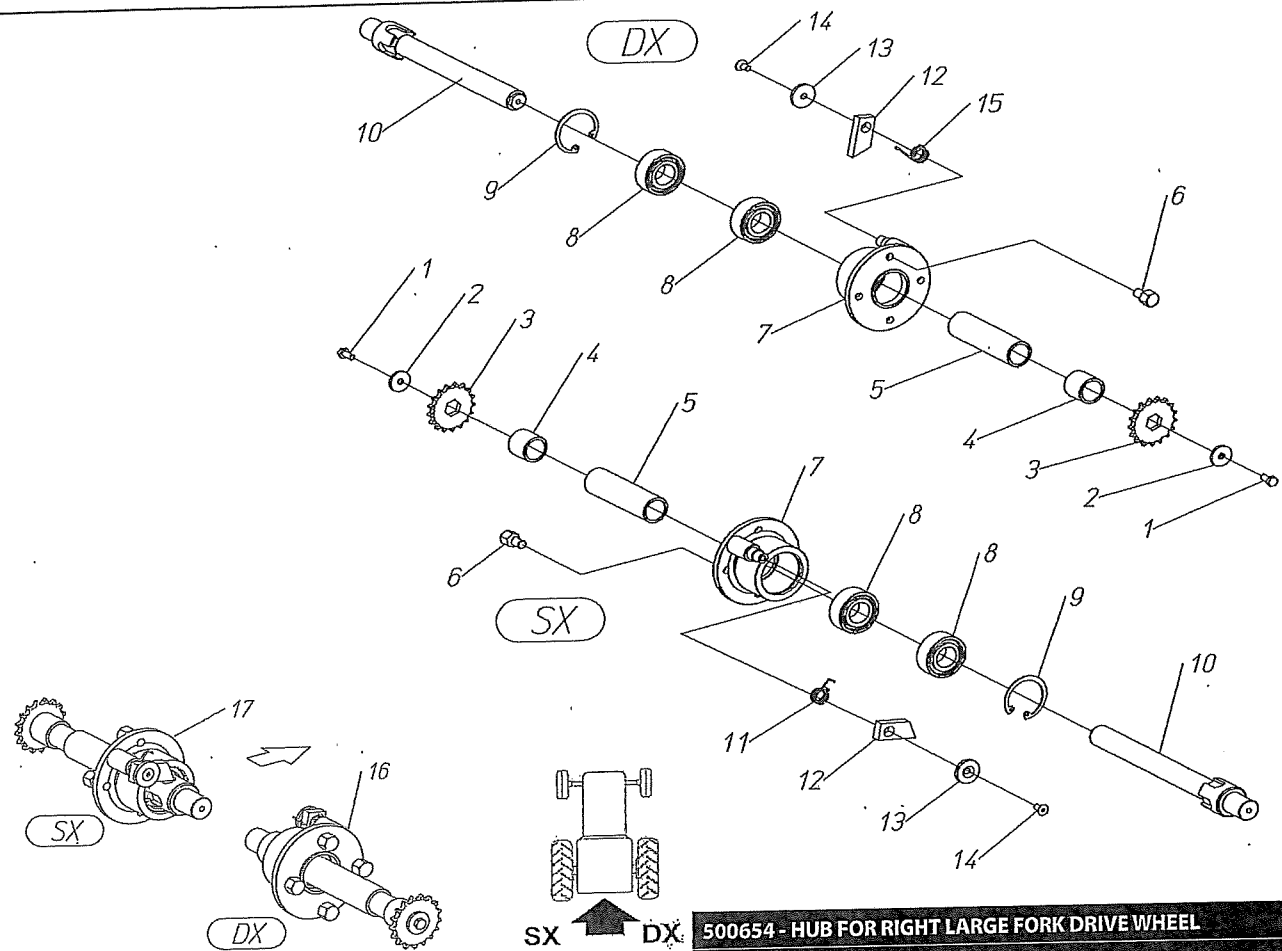


Pos.	Code	Description
1	902103	SCREW TE M 8x8 - 8.8
2	907316	FLAT WASHER 8x30x4 - R40
3	400330	HEXAGONAL PINION Z 17 1/2x5/16
4	401687	SPACER 30 x 38 x 36
5	401702	SPACER 30 x 38 x 64
6	402196	WHEELS SCREW (M 12X15)
7	421223	COMPLETE HUB FOR FORK WHEEL
8	910200	BEARING CONT.OBL.2 COR. 3206B-2RS
9	940009	SEEGER RING I 62
10	401701	HUB SHAFT FOR NARROW FORK
11	800001	RIGHT SPRING FOR STOPPING
12	400848	STOP FOR SHAFT REINFORCED DRIVE WHEEL
13	400280	WASHER DISTRIBUTOR
14	904107	SCREW TSEI M 8x16 - 10.9
15	800002	LEFT SPRING FOR STOPPING
16	500656	COMPLETE RIGHT HUB-RAPID SHIFT NARROW FORK WHEEL
17	500657	COMPLETE LEFT HUB-RAPID SHIFT NARROW FORK WHEEL

500656 - COMPLETE RIGHT HUB-RAPID SHIFT NARROW FORK WHEEL

500657 - COMPLETE LEFT HUB-RAPID SHIFT NARROW FORK WHEEL

60204176-177



500654 - HUB FOR RIGHT LARGE FORK DRIVE WHEEL
 500655 - HUB FOR LEFT LARGE FORK DRIVE WHEEL

28-10-2013

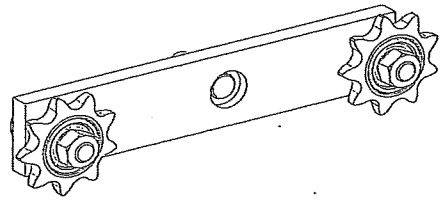
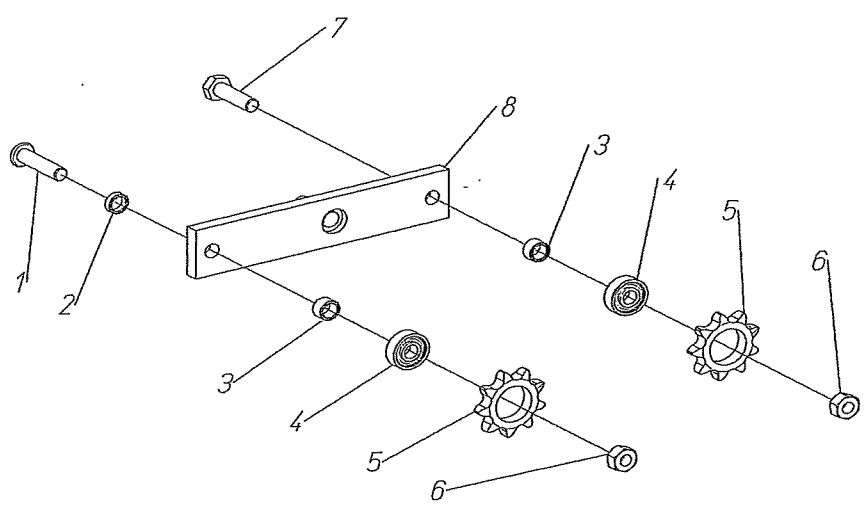


Pos.	Code	Description
1	902103	SCREW TE M 8x8 - 8.8
2	907316	FLAT WASHER 8x30x4 - R40
3	400330	HEXAGONAL PINION Z 17 1/2x5/16
3	SEE TAB.	OPTIONAL DISTANCES R.S.
4	401687	SPACER 30 x 38 x 36
5	401686	SPACER 30 x 38 x 137
6	402196	WHEELS SCREW (M 12X15)
7	421223	COMPLETE HUB FOR FORK WHEEL
8	910200	BEARING CONT.OBL.2 COR. 3206B-2RS
9	940009	SEEGER RING I 62
10	401685	DRIVE SHAFT LARGE DRIVE WHEEL WITH FORK
11	800001	RIGHT SPRING FOR STOPPING
12	400848	STOP FOR SHAFT REINFORCED DRIVE WHEEL
13	400280	WASHER DISTRIBUTOR
14	904107	SCREW TSEI M 8x16 - 10.9
15	800002	LEFT SPRING FOR STOPPING
16	500654	HUB - RIGHT LARGE FORK DRIV. WHEEL
17	500655	HUB - LEFT LARGE FORK DRIV. WHEEL

500654 - HUB FOR RIGHT LARGE FORK DRIVE WHEEL
 500655 - HUB FOR LEFT LARGE FORK DRIVE WHEEL

Pos.	Code	Description
------	------	-------------

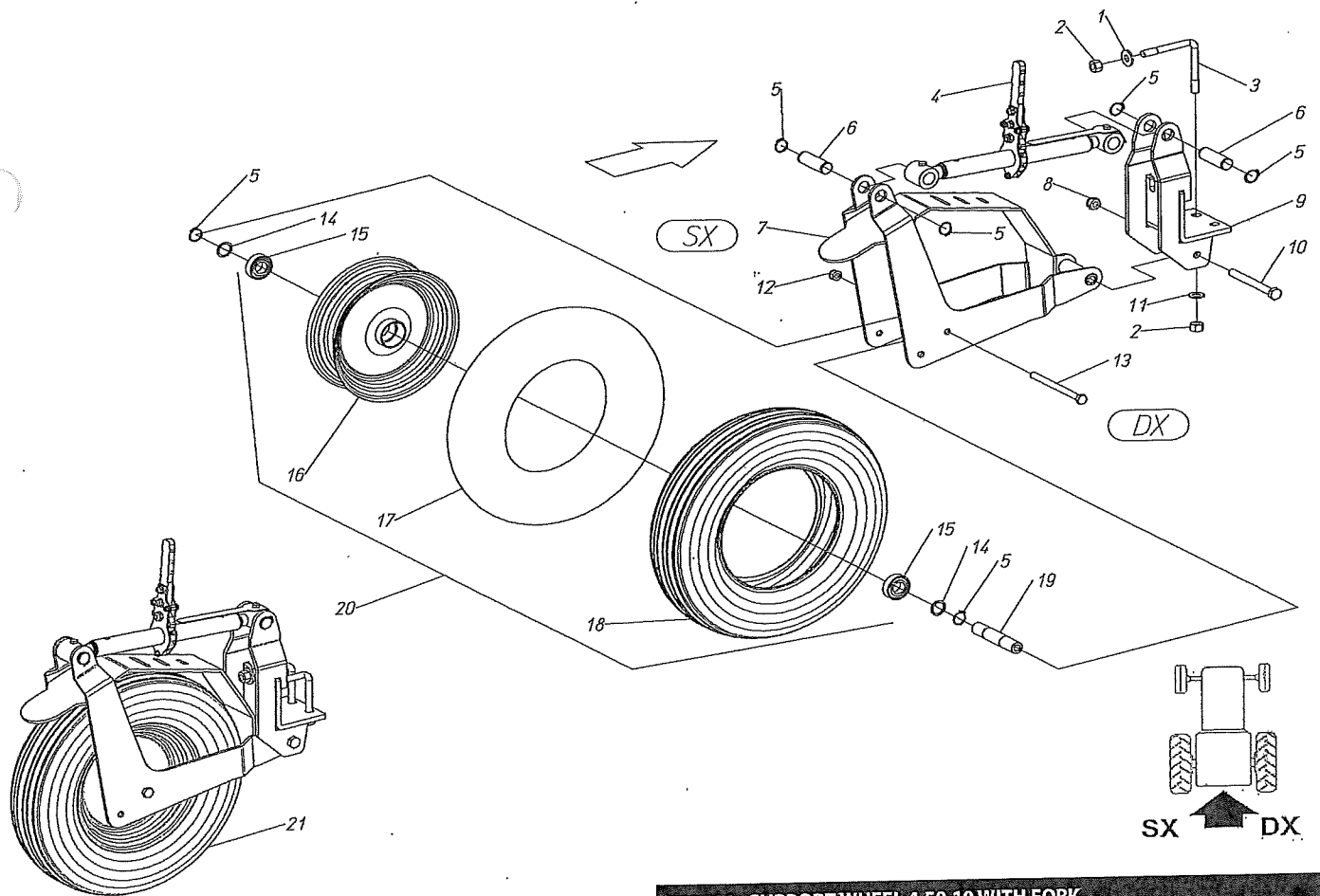
1	904130	SCREW TBEI M 8x35 - 10.9
2	400535	SPACER 8,2 x 12 x 4,5
3	400263	SPACER 8,5 x 12 x 7,5
4	910110	BEARING 2RS 608 (8-22-7)
5	400264	PINION Z 9 1/2x5/16 F.22
6	905105	NUT M 8 (MEDIUM) 6S
7	902107	SCREW TE M 8x30 - 8.8
8	421218	CHAIN TENSIONER - WHEEL WITH FORK



CHAIN TENSIONER FORK WHEEL

60204175

60204096



500766 - SUPPORT WHEEL 4.50.10 WITH FORK

22-07-2013

Pos.	Code	Description
1	907308	FLAT WASHER 14x35x4 - R40
2	905008	NUT M 14 (HIGH) 6S
3	400042	L BOLT M 14 (Q.80)
4	500730	LIGHT DUTY WHEEL ADJUST. RATCHET
5	940505	SEEGER RETAINING RING E 25
6	402376	PIN D.25X78 (2 SEEGER INSIDE 70)
7	421663	SUPPORT WHEEL FORK 450-10
8	906108	NUT ATB M 14 (LOW) 6.8
9	421662	FORK SUPPORT
10	900227	SCREW TE M 14x140 - 8.8
11	907108	FLAT WASHER 14 - R40
12	906107	NUT ATB M12 (LOW) 6.8
13	900195	SCREW TE M12X160 - 8.8
14	402192	STEEL WASHER 25X32X2 C70
15	910111	BEARING 2RS 6205 (25- 52-15)
16	914113	RIM 3,50-10 BEARING 25
17	914097	INNER TUBE 4,50-10 VG
18	914095	TYRE 4,50-10 KT
19	402213	SHAFT 25X133 HOLE 12,5 SEEGER EST.60
20	914038	WHEEL 4.50.10 TL KING TYRE BEARING 25
21	500766	SUPPORT WHEEL 4.50.10 WITH FORK

500766 - SUPPORT WHEEL 4.50.10 WITH FORK

