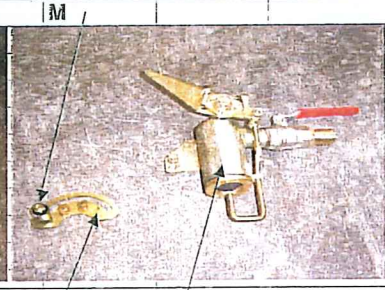
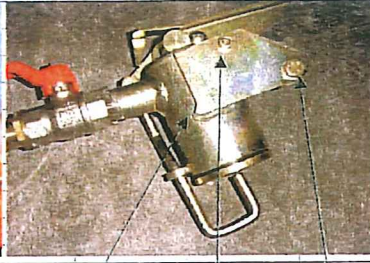


MAX PRESSURE $\left\{ \begin{array}{l} 0.2 \text{ bar} \\ 2.9 \text{ psi} \end{array} \right.$

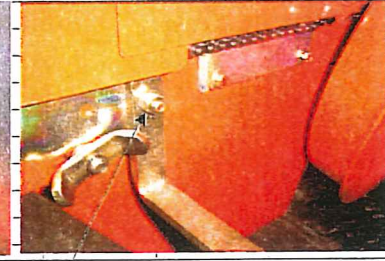
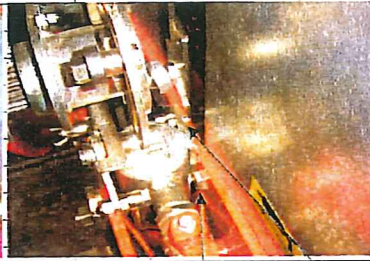
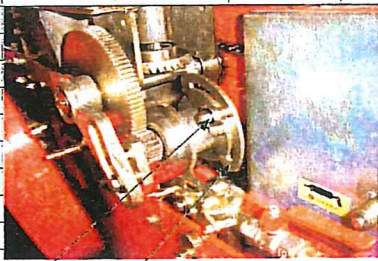
Checchi & Magli

DATA 20/10/2005

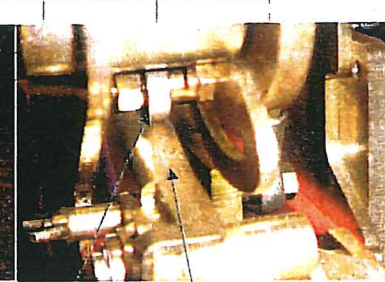
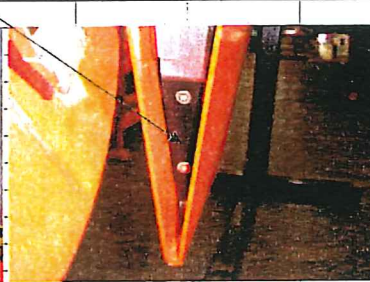
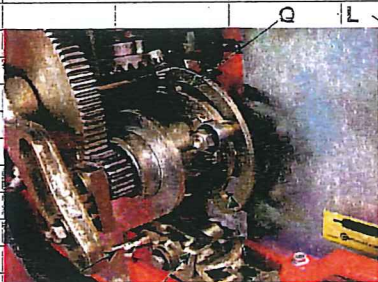
Timing of the watering device for Trium 10 cups-01



- 1 Place the control cam A on the flange that controls the expulsion end
- 2 Place the bearing B at the center of the slot, as its starting point



- 3 Insert the pump C inside the frame, paying attention in loosening before the nut D
- 4 Fix now the pump with the screw E paying attention in keeping the screw F in touch with the frame (see position G)
- 5 Block now the nut D in the position in which the head of the screw is in touch with the catch I
- 6 Verify that the pump is steady in its position
- 7 Rotating the distributor in the working direction, let the device make some settling turns
- 8 Place the flexible plate L at 50 mm before exiting the share



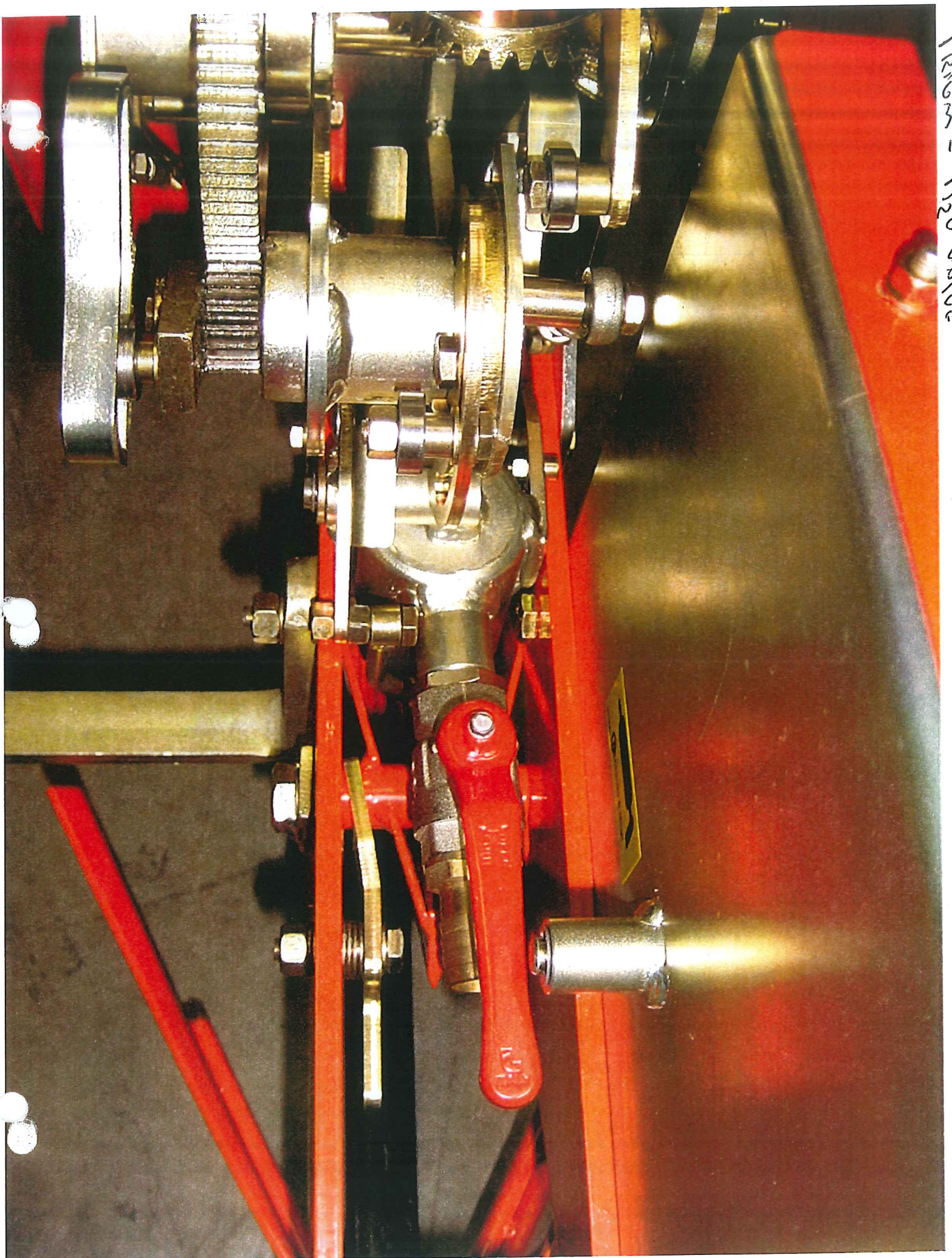
- 9 Loosen the gill nut N
- 10 Put the lever O in touch with the rubber ball of the pump
- 11 Put now the lever P in touch with the bearing M and block the nut N
- 12 To anticipate the opening of the water, move the bearing M to the point Q
- 13 To retard the opening of the water move the bearing M to the point R
- 14 To adjust the quantity of water, loosen the nut N and act on the lever P





1233
110
vns

M. C. C. & Magli



12/20/2008 - 12/20/2008

12/20