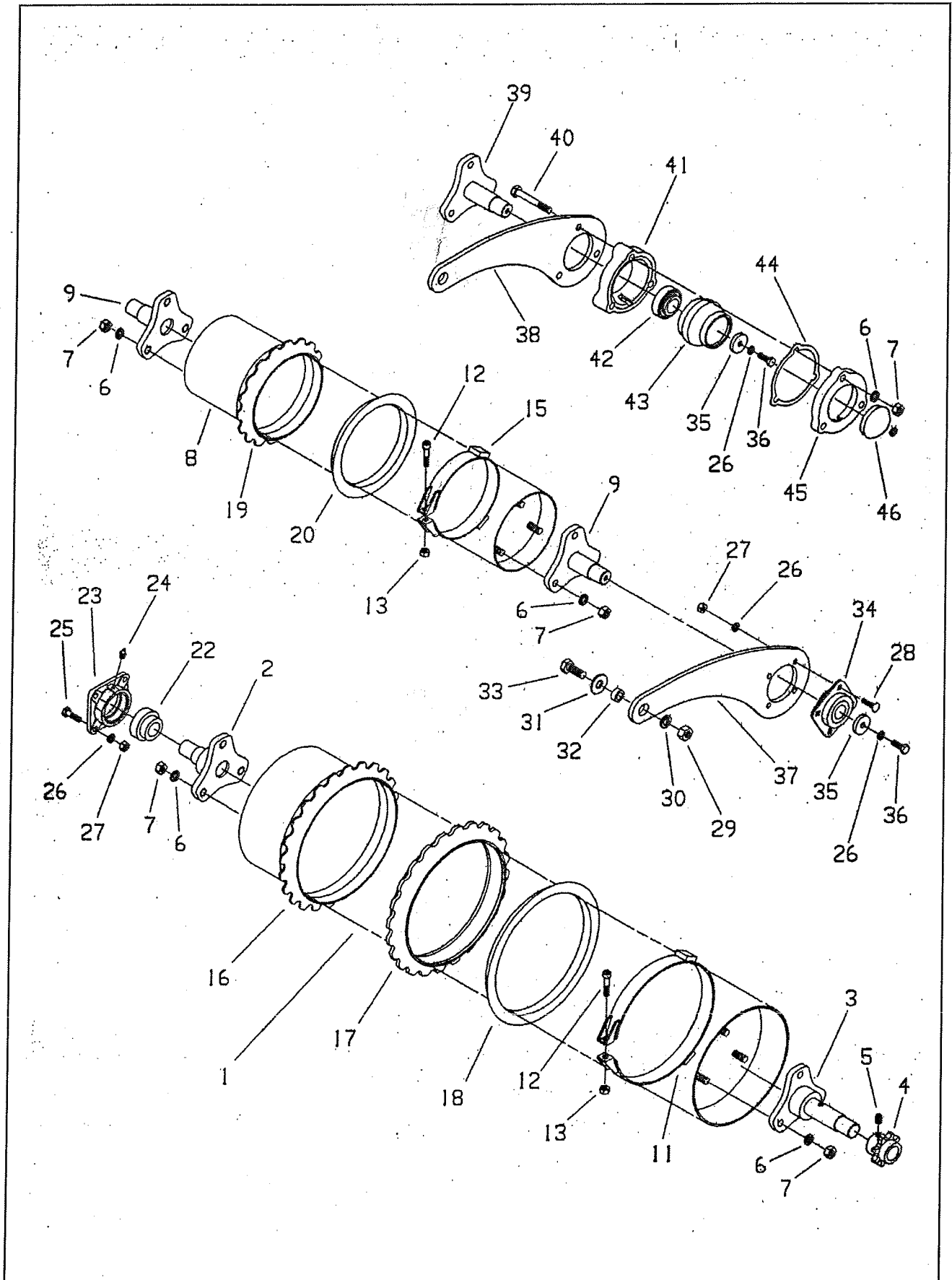
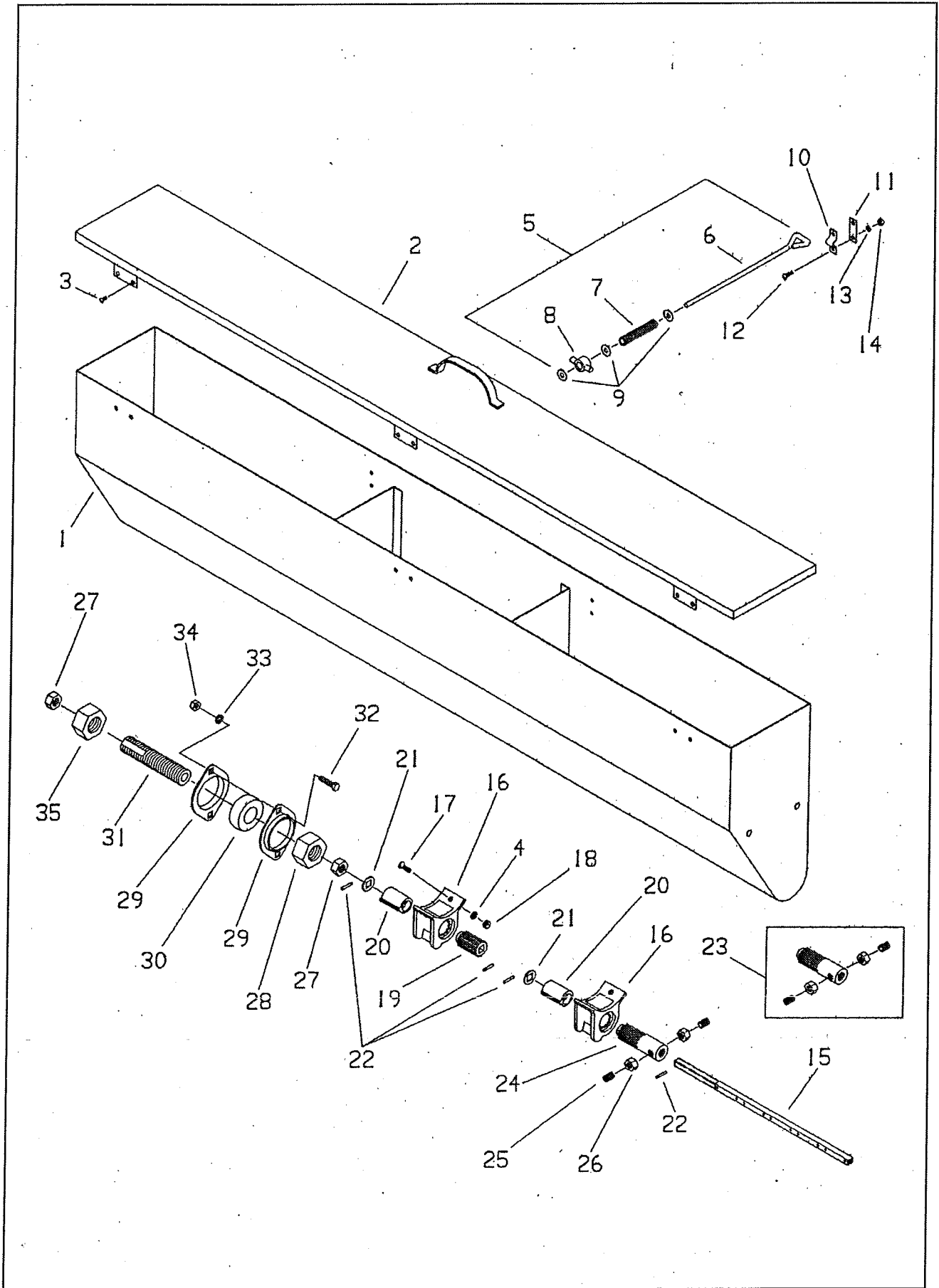


Billion SS-10



WHEEL & AXLE ASSEMBLY

Item	Part No.	Description	Qty	Weight
1	9J350	Front Pipe and End Plate	1	253.0
2	9J351	R.H. Front Stub Shaft	1	9.28
3	1K470	L.H. Front Stub Shaft	1	12.4
4	4C580	Axle Sprocket	1	2.6
5	3C947	Set Screw, Hex Socket Hd., 1/2-13 NC x 3/4 Cup Pt.	1	-
6	1B166	Lock Washer, 5/8 Reg.	12	.02
7	1C392	Nut, 5/8-11 NC Hex	12	.07
8	9J337	Rear Pipe and End Plate	1	138.4
9	2K475	Rear Stub Shaft	2	7.24
10	2C802	Front Clamp Band and Bolt Assembly (items 11-13)	2	3.3
11	2C062	Front Clamp Band	2	3.2
12	4C144	Cap Screw, 1/2-13 NC x 2 1/4 Socket Hd.	4	.16
13	2C112	Lock Nut, 1/2-13 NC Heavy Elastic	4	.06
14	2C801	Rear Clamp Band and Bolt As'y (items 12,13, & 15)	2	2.5
15	2C055	Rear Clamp Band	2	2.4
16	4C688	Front Sand Wheel	50	10.4
17	9J402	Front Sand Wheel (optional in place of 4C688)	50	14.5
18	1C968	Front End Wheel	2	7.6
19	4C689	Rear Sand Wheel	52	8.4
20	2C524	Rear End Wheel	2	5.5
21	4D645	Bearing - Front (items 22-24)	2	4.7
22	9D903	Bearing 1-1/2"	2	1.0
23	9D904	Flanged Housing	2	3.7
24	9D923	Grease Fitting	2	-
25	1J486	Cap Screw, 1/2-13 NC x 2 1/4", Gr. 5	8	.13
26	1C109	Lock Washer, 1/2 Reg.	18	.01
27	1C390	Nut, 1/2-13 NC Hex	16	.04
28	9J559	Carriage Bolt, 1/2-13 x 1 1/2, Gr. 5	8	.11
29	1C210	Nut, 3/4-10 NC Hex	2	.12
30	1C211	Lock Washer, 3/4 Reg.	2	.04
31	1C133	Washer, 3/4 Std. Flat	2	.11
32	9J399	Bushing	2	.1
33	6D742	Cap screw, 3/4-10 NC x 3", Gr. 5	2	.4
34	2K316	Bearing Assembly - Rear	2	3.80
35	9J338	Washer	2	.3
36	1D442	Cap Screw, 1/2-20 NF x 1 1/4, Gr. 5	2	.10
37	2K522	Rear Arm	2	14.6
For older models use the following parts:				
6	1B166	Lock Washer, 5/8 Reg.	6	.02
7	1C392	Nut, 5/8-11 NC Hex	6	.07
26	1C109	Lock Washer, 1/2 Reg.	2	.01
35	9J338	Washer	2	.3
36	1D442	Cap Screw, 1/2-20 NF x 1 1/4, Gr. 5	2	.10
38	9J342	Rear Arm	2	16.5
39	9J333	Rear Stub Shaft	2	7.24
40	9C933	Cap Screw, 5/8-11 NC x 4 1/2	6	.44
41	9J344	Bearing	2	9.0
42	9J234	Bearing	2	.7
43	9J343	Bearing Housing	2	6.8
44	6D910	Shim	6	-
45	1C837	Clamp Ring	2	4.8
46	9J339	Hub Cap	2	.1

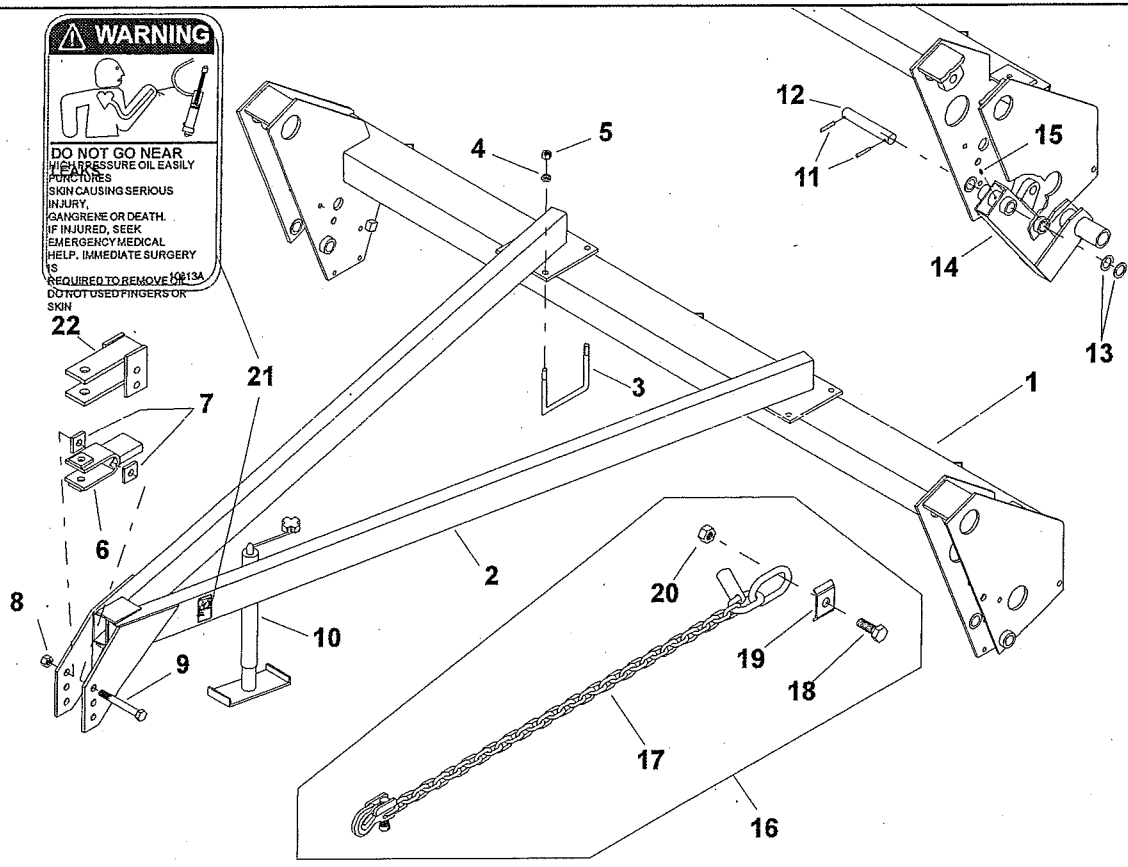


LEFT & RIGHT FRONT SEED BOX ASSEMBLY

Item	Part No.	Description	Qty	Weight
1	9J413	Fabricated Seed Box (Does not include cover)	2	43.1
2	9J415	Cover	2	12.3
3	3K424	Capscrew, 1/4-20 NC x 1/2"	12	-
4	1C354	Lock Washer, 1/4 Reg.	28	-
5	1C199	Pivot Lock Assembly (includes items 6-9)	4	.2
6	1C192	Pivot Lock Stem		-
7	1C212	Spring		-
8	1C193	Pivot		-
9	3C708	Flat Washer, 1/4 SAE		-
10	7D938	Cover Lock Clip	4	-
11	7D937	Wear Strip	4	-
12	1C213	Screw, #10-24 NC x 1/2 Lg. Rd. Hd.	8	-
13	1C372	Lock Washer #10 Reg.	8	-
14	1C386	Nut, #10-24 NC Hex	8	-
15	9J431	Seedmeter Shaft R.H.	1	3.03
	9J428	Seedmeter Shaft L.H.	1	3.03
16	4C589	Feedcup Assembly	14	.1
17	4C750	Machine Screw, 1/4-20 NC x 5/8	28	-
18	1C355	Nut, 1/4-20 NC Hex	28	-
19	1C242	Feed Roll	13	.2
20	1C243	Feed Cutoff	14	.3
21	1C245	Cutoff Washer	15	-
22	1C272	Shaft Pin	28	-
		RIGHT SEED BOX ONLY (items 23-35)		
23	3C356	Feed Roll Coupling Assembly (items 24-26)	1	1.3
24	1C977	Feed Roll and Shaft Coupling	1	1.3
25	1C737	Set Screw, 3/8-16 x 1/2	2	-
26	1C134	Lock Nut, 3/8-16 Light Hex	2	-
27	5C392	Stover Nut, 1/2-13 NC	2	.04
28	4D414	Nut, 1-8 NC Hex	1	.27
29	1D617	Flangette Stamping	2	.11
30	4D413	Bearing	1	.3
31	9J433	Adjusting Screw	1	.52
32	1C361	Cap Screw, 5/16-18 NC x 1	2	.03
33	1C362	Lock Washer, 5/16 Reg.	2	-
34	1C385	Nut, 5/16-18 NC Hex	2	.01
35	4D402	Seed Rate Adj. Nut	1	.25

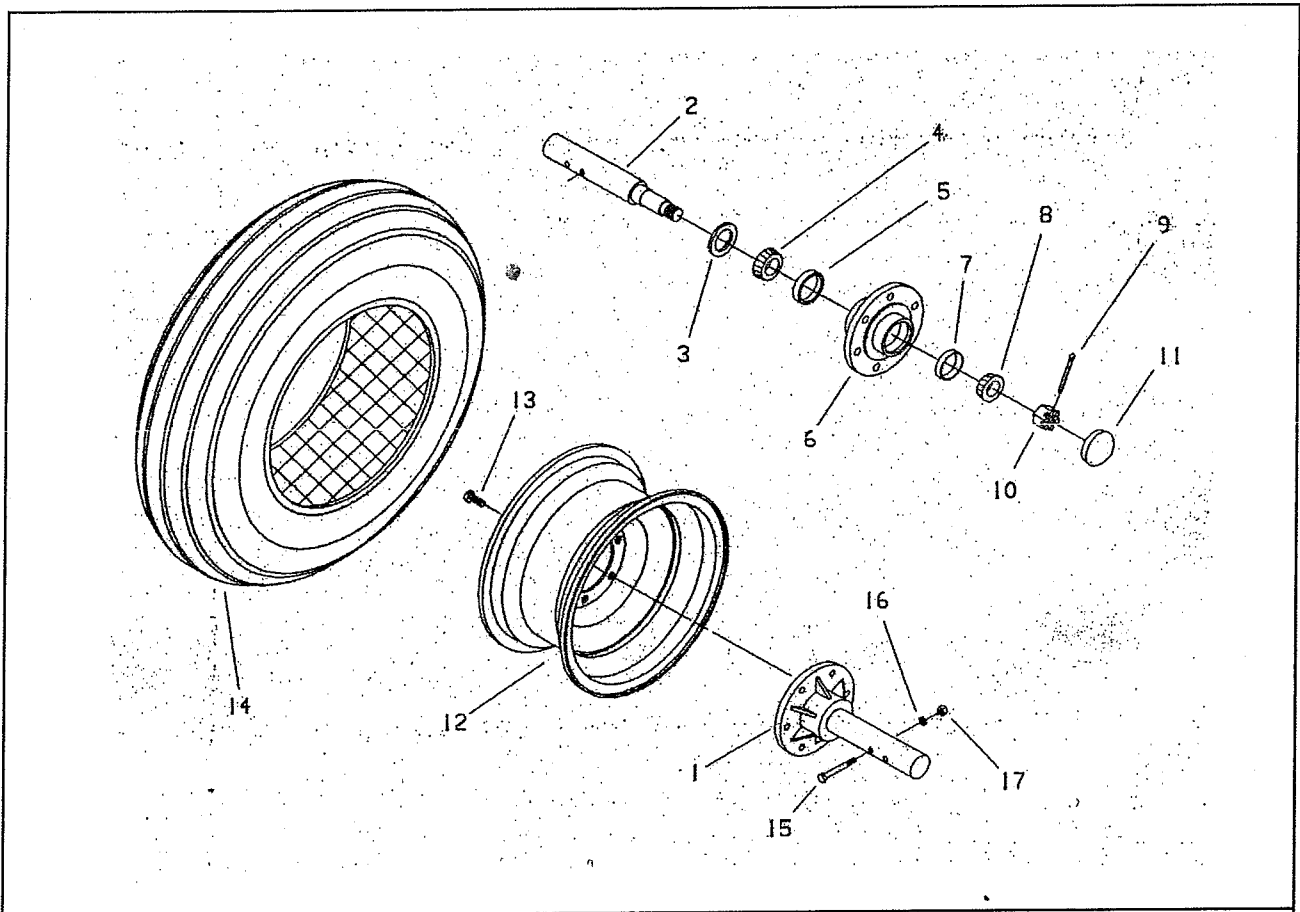
WARNING

DO NOT GO NEAR HIGH PRESSURE OIL EASILY PUNCTURES SKIN CAUSING SERIOUS INJURY. GANGRENE OR DEATH. IF INJURED, SEEK EMERGENCY MEDICAL HELP. IMMEDIATE SURGERY IS REQUIRED TO REMOVE OIL. DO NOT USE FINGERS OR SKIN



PULL TYPE FRAME & DRAWBAR

Item	Part No.	Description	Qty	Weight
1	9J311	Frame	1	254.0
2	9J353	Drawbar	1	140.0
3	7J990	U-Bolt, 5/8-11 NC	4	1.2
4	1B166	Lock Washer, 5/8 Reg.	8	.02
5	1C392	Nut, 5/8-11 NC Hex	8	.07
6	9J357	Clevis (used prior to April 1, 1997)	1	7.7
7	9D768	Spacer	2	.4
8	6C729	Nut, 3/4-10 Stover	2	.1
9	6D300	Cap Screw, 3/4-10 x 6, Gr. 5	2	.8
10	4J867	Drawbar Jack	1	17.0
	6K458	Replacement Pin, 9/16" with chain & screw	1	.36
11	4C858	Roll Pin, 5/16 dia. x 2	4	-
12	9J400	Pin, 1-1/4 dia. x 7 5/16	2	2.48
13	4J548	Machinery Bushing	2	-
14	9J324	Wheel Arm, L. H.	1	21.78
	9J325	Wheel Arm, R. H.	1	21.78
15	3C142	Grease Fitting, Alemite #1743	2	-
16	1K822	SAFETY CHAIN KIT (Includes items 17-20)	1	9.0
17	1K731	Safety Chain, 10,100#	1	4.76
18	1D424	Cap Screw, 3/4-10 x 2, Grade 5	1	.37
19	1K809	Clip for Safety Chain	1	.36
20	6C729	Stover Nut, 3/4-10 NC Hex	1	.12
21	3K706	Decal, Hydraulic Leak	.1	-
22	4K636	Hitch (used after April 1, 1997)	1	11.8



WHEELS & SPINDLES

Item	Part No.	Description	Qty	Weight
1	9J331	Hub & Spindle Assembly-Complete	2	14.51
2	9J330	Spindle	2	5.6
3	1D273	Seal	2	.1
4	5C480	Bearing Cone, #LM48548	2	.2
5	5C479	Bearing Cup, #LM48510	2	.1
6	1J390	Wheel Hub	2	8.6
7	5C912	Bearing Cup, #LM11910	2	.1
8	5C911	Bearing Cone, #LM11949	2	.2
9	3C350	Cotter Pin, 5/32 x 1	2	-
10	3C173	Slotted Nut, 3/4-16 NF	2	.10
11	1J463	Hub Cap	2	.2
12	6J189	Wheel, 5 Bolt (15 x 8)	2	24.0
	4C129	Wheel, 5 Bolt (15 x 5)	2	16.0
13	5C100	Wheel Bolt	10	.1
14	8J794	Tire, 7.60 x 15 (for 4C129 wheel)	2	27.0
	8J795	Tire, 9.5L x 15 (for 6J189 wheel)	2	33.0
	8J796	Tire, 11L x 15 (for 6J189 wheel)	2	38.0
15	8C528	Cap Screw, 1/2-13 NC x 3, Gr. 5	2	.20
16	1C109	Lock Washer, 1/2 Reg.	2	.01
17	1C390	Nut, 1/2-13 NC Hex	2	.04